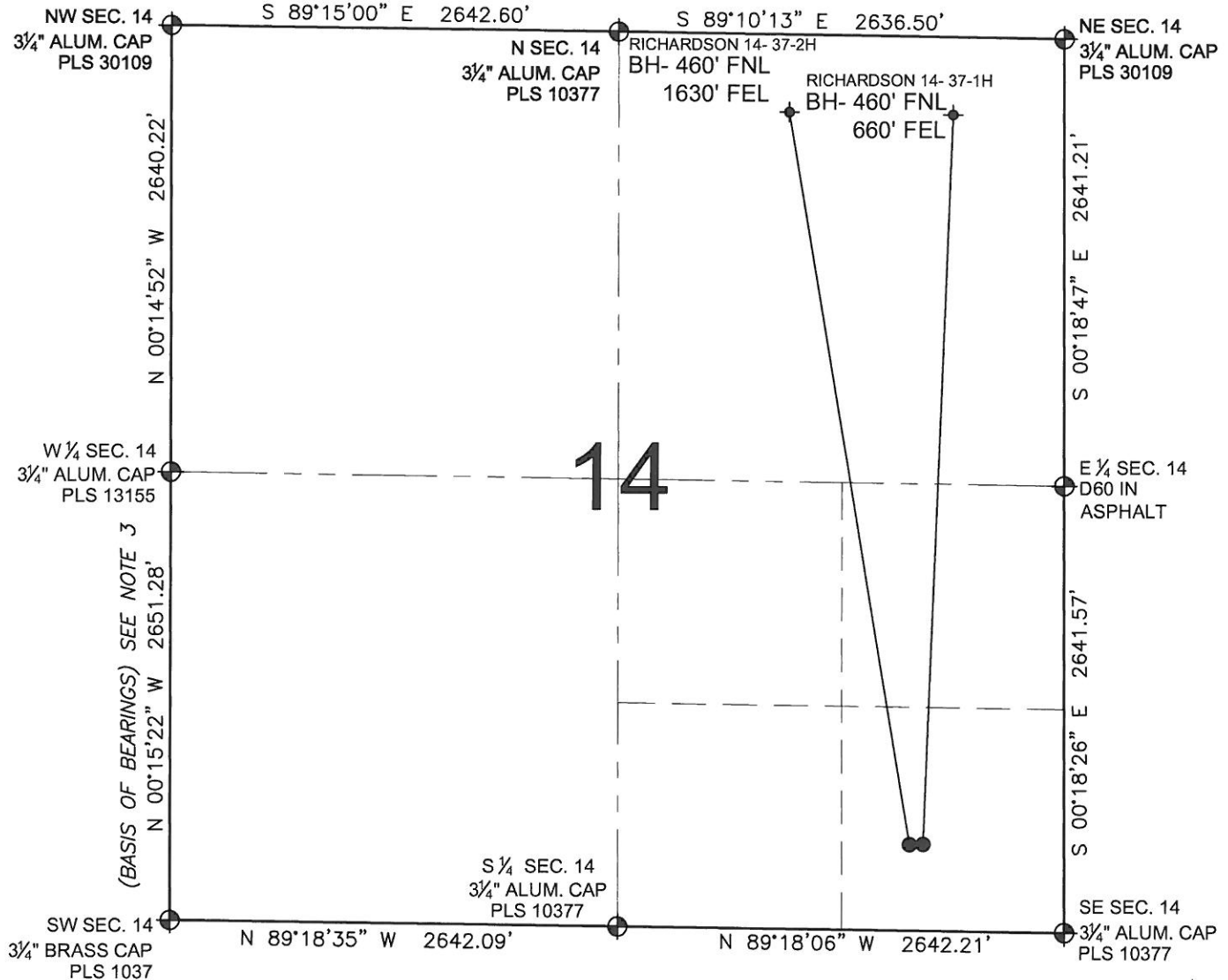


PAD DRAWING: RICHARDSON 2 PAD

SECTION 14, TOWNSHIP 3 SOUTH, RANGE 65 WEST, 6TH P.M.



LEGEND

- = EXISTING MONUMENT ♦ = BOTTOM HOLE BH = BOTTOM HOLE
- = PROPOSED WELL ♦ = EXISTING WELL

NOTES:

- THIS FIELD SURVEY CONFORMS TO THE MINIMUM STANDARDS SET BY THE C.O.G.C.C., RULE NO. 215
- HORIZONTAL POSITIONS AND ORTHOMETRIC ELEVATIONS SHOWN AT THE WELL HEAD, ARE BASED ON GPS-RTK POSITIONS DERIVED FROM MINIMUM 2-HOUR STATIC OBSERVATIONS CORRECTED BY THE NATIONAL GEODETIC SURVEY ONLINE POSITIONING USER SERVICE, O.P.U.S. DATUM: HORIZONTAL = NAD83/2007, VERTICAL = NAVD88
- THE BASIS OF BEARINGS ARE STATE PLANE COORDINATE SYSTEM GRID BEARINGS SHOWN HEREON BETWEEN THE DESCRIBED THE MONUMENTS SHOWN HEREON.
- GRID DISTANCES ARE SHOWN, AS MEASURED IN THE FIELD, WITH TIES TO WELLS MEASURED PERPENDICULAR TO SECTION LINES.

NOTES:

RICHARDSON 14- 37-1H TO BE AT 511' FSL, 838' FEL.
 BOTTOM HOLE AT 460' FNL & 660' FEL.
 RICHARDSON 14- 37-2H TO BE AT 511' FSL, 868' FEL.
 BOTTOM HOLE AT 460' FNL & 1630' FEL.

0 500 1000

SCALE: 1"=1000'



PREPARED BY:

PFS

Petroleum Field Services, LLC
 1801 W. 13th Ave.
 Denver, CO 80204



ANADARKO E&P CO LP

FIELD DATE:
03-21-12

DRAWING DATE:
03-22-12

BY:
KAG

PAD NAME:
RICHARDSON 2 PAD

SURFACE LOCATION:

ADAMS COUNTY, COLORADO

SE 1/4 SE 1/4, SEC. 14, T3S, R65W, 6TH P.M.