

77N, R90W, 6th P.M.

AXIA ENERGY

Well location, BULLDOG #5-31H-790 (SURFACE LOCATION) located as shown in the NW 1/4 NE 1/4 of Section 5, T7N, R90W, 6th P.M., Moffat County, Colorado.

BASIS OF ELEVATION

SPOT ELEVATION LOCATED AT THE SOUTHWEST CORNER OF SECTION 15, T7N, R91W, 6th P.M. TAKEN FROM THE CRAIG QUADRANGLE, COLORADO, MOFFAT COUNTY, 7.5 MINUTE QUAD (TOPOGRAPHIC MAP) PUBLISHED BY THE UNITED STATES DEPARTMENT OF THE INTERIOR, GEOLOGICAL SURVEY. SAID ELEVATION IS MARKED AS BEING 6672 FEET.

BASIS OF BEARINGS

BASIS OF BEARINGS IS A G.P.S. OBSERVATION.

1908 GLO 3 1/2" Brass
Cap, 1.0' High, Fence
Lat: 40.600806°
Long: 107.524444°

1908 GLO 3 1/2" Brass
Cap, 1.2' High, Fence
Lat: 40.600658°
Long: 107.505289°

S89°28'51"E - 5321.53' (Meas.)

BULLDOG #5-31H-790

Elev. Ungraded Ground = 6492'

N00°50'03"E - 2613.76' (Meas.)

NOTE:
THE PROPOSED BOTTOM HOLE FOR THIS WELL IS LOCATED IN THE SE 1/4 NW 1/4 OF SECTION 8, T7N, R90W, 6th P.M. AT A DISTANCE OF 2040' FNL 2397' FWL. IT BEARS N105°33'W 6927.74' FROM THE PROPOSED WELL HEAD.

1908 GLO 2 1/2" Brass
Cap, 1.2' High, Fence
Lat: 40.593633°
Long: 107.524592°

NOTE:
SEE ADDENDUM TO LEGAL PLAT FOR EXISTING IMPROVEMENTS WITHIN 400' OF THE PROPOSED WELL DISTURBANCE.

N00°49'42"E - 2567.64' (Meas.)

2 1/2" GLO Brass Cap,
1.7' High, Fence
Lat: 40.586661°
Long: 107.515154°

S89°22'13"W - 2658.43' (Meas.)

N89°13'34"W - 2654.12' (Meas.)

S00°56'25"W - 5139.97' (Meas.)

1677'

S10°53'33"W - 6927.74'
(To Bottom Hole)

2012 UELS 2 1/2" Alum.
Cap, 0.5' Below Road
C.O.L.O. 17492
Lat: 40.586589°
Long: 107.524733°

LEGEND:

- 90° SYMBOL
- PROPOSED WELL HEAD.
- SECTION CORNERS LOCATED.

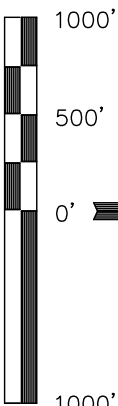
PDOP = 1.2

NAD 83 (SURFACE LOCATION)	
LATITUDE =	40°35'58.99" (40.599719)
LONGITUDE =	107°30'40.86" (107.511350)
NAD 27 (SURFACE LOCATION)	
LATITUDE =	40°35'59.10" (40.599750)
LONGITUDE =	107°30'38.63" (107.510731)
STATE PLANE NAD 83	
N: 1467653.42	E: 2441516.43
STATE PLANE NAD 27	
N: 467652.20	E: 1441673.93

REVISED: 02-06-12

THIS IS TO CERTIFY THAT THE ABOVE PLAT WAS PREPARED FROM FIELD NOTES OF ACTUAL SURVEYS MADE BY ME OR UNDER MY SUPERVISION AND THAT THE SAME ARE TRUE AND CORRECT TO THE BEST OF MY KNOWLEDGE AND BELIEF.

REGISTERED LAND SURVEYOR
REGISTRATION NO. 17492
STATE OF COLORADO
02-06-12



SCALE
CERTIFICATE

UTAH ENGINEERING & LAND SURVEYING
85 SOUTH 200 EAST - VERNAL, UTAH 84078
(435) 789-1017

SCALE	DATE SURVEYED:	DATE DRAWN:
1" = 1000'	01-25-12	01-30-12
PARTY	REFERENCES	
B.H. N.F. Z.L.	G.L.O. PLAT	
WEATHER	FILE	
COLD	AXIA ENERGY	

77N, R90W, 6th P.M.

AXIA ENERGY

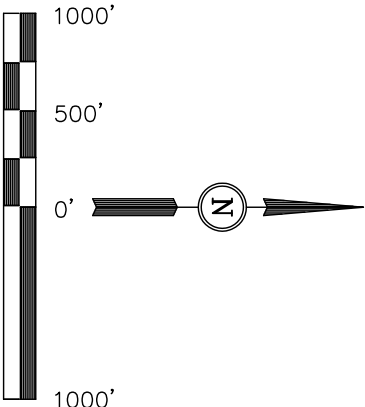
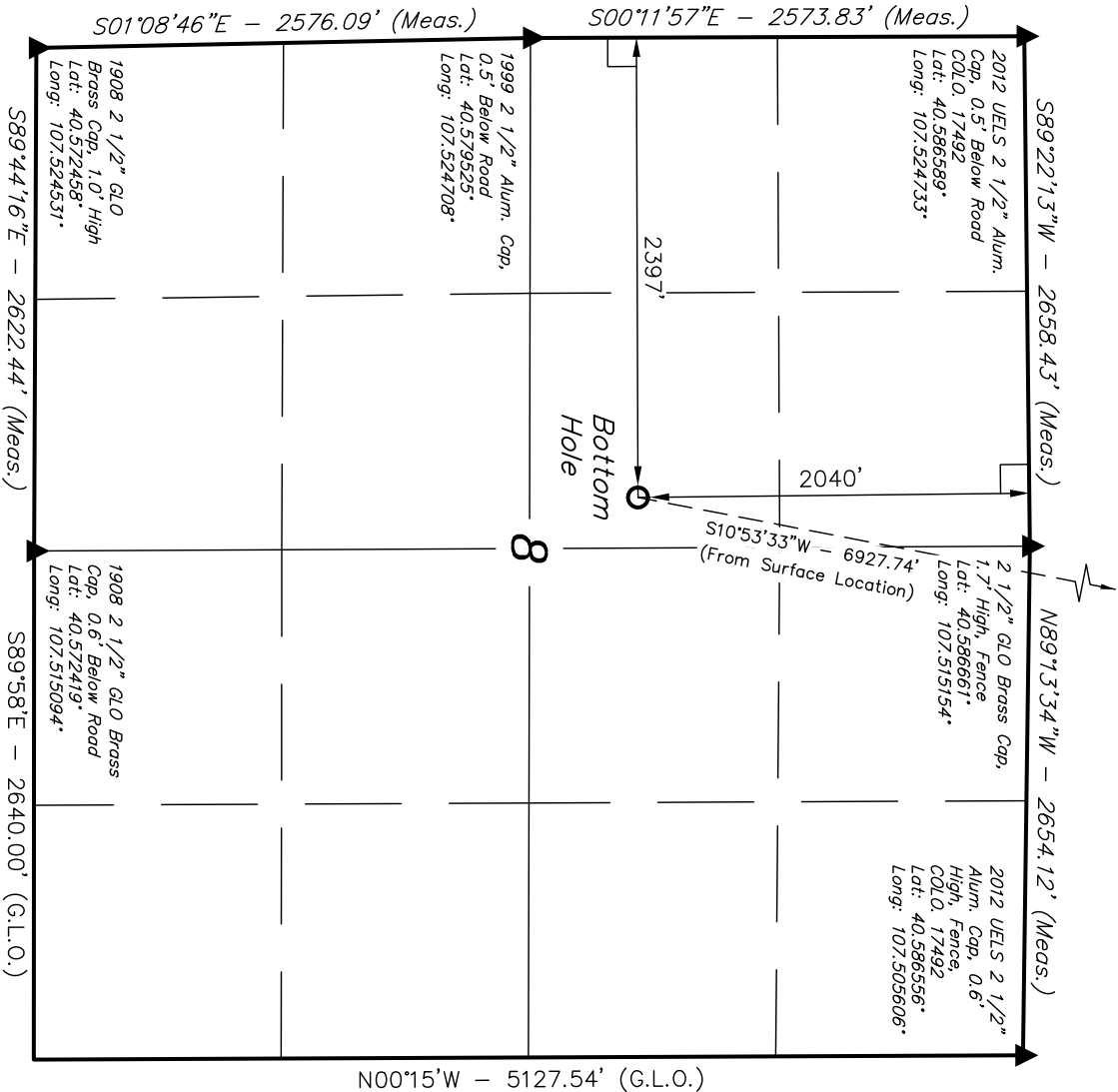
Well location, BULLDOG #5-31H-790 (TARGET BOTTOM HOLE) located as shown in the SE 1/4 NW 1/4 of Section 8, T7N, R90W, 6th P.M., Moffat County, Colorado.

BASIS OF ELEVATION

SPOT ELEVATION LOCATED AT THE SOUTHWEST CORNER OF SECTION 15, T7N, R91W, 6th P.M. TAKEN FROM THE CRAIG QUADRANGLE, COLORADO, MOFFAT COUNTY, 7.5 MINUTE QUAD (TOPOGRAPHIC MAP) PUBLISHED BY THE UNITED STATES DEPARTMENT OF THE INTERIOR, GEOLOGICAL SURVEY. SAID ELEVATION IS MARKED AS BEING 6672 FEET.

BASIS OF BEARINGS

BASIS OF BEARINGS IS A G.P.S. OBSERVATION.



CERTIFICATE

THIS IS TO CERTIFY THAT THE ABOVE PLAT WAS PREPARED FROM FIELD NOTES OF ACTUAL SURVEYS MADE BY ME OR UNDER MY SUPERVISION AND THAT THE SAME ARE TRUE AND CORRECT TO THE BEST OF MY KNOWLEDGE AND BELIEF.

REGISTERED LAND SURVEYOR
REGISTRATION NO. 17492
STATE OF COLORADO
02-06-12

UINTAH ENGINEERING & LAND SURVEYING
85 SOUTH 200 EAST - VERNAL, UTAH 84078
(435) 789-1017

NAD 83 (TARGET BOTTOM HOLE)	
LATITUDE =	40°34'51.80" (40.581056)
LONGITUDE =	107°30'57.91" (107.516086)
NAD 27 (TARGET BOTTOM HOLE)	
LATITUDE =	40°34'51.91" (40.581086)
LONGITUDE =	107°30'55.68" (107.515467)
STATE PLANE NAD 83	
N: 1460885.52	E: 2440047.02
STATE PLANE NAD 27	
N: 460884.34	E: 1440204.55

SCALE 1" = 1000'		DATE SURVEYED: 01-25-12		DATE DRAWN: 02-06-12	
PARTY B.H. N.F. Z.L.		REFERENCES G.L.O. PLAT			
WEATHER COLD		FILE AXIA ENERGY			

LEGEND:

- = 90° SYMBOL
- = PROPOSED WELL HEAD.
- ▲ = SECTION CORNERS LOCATED.