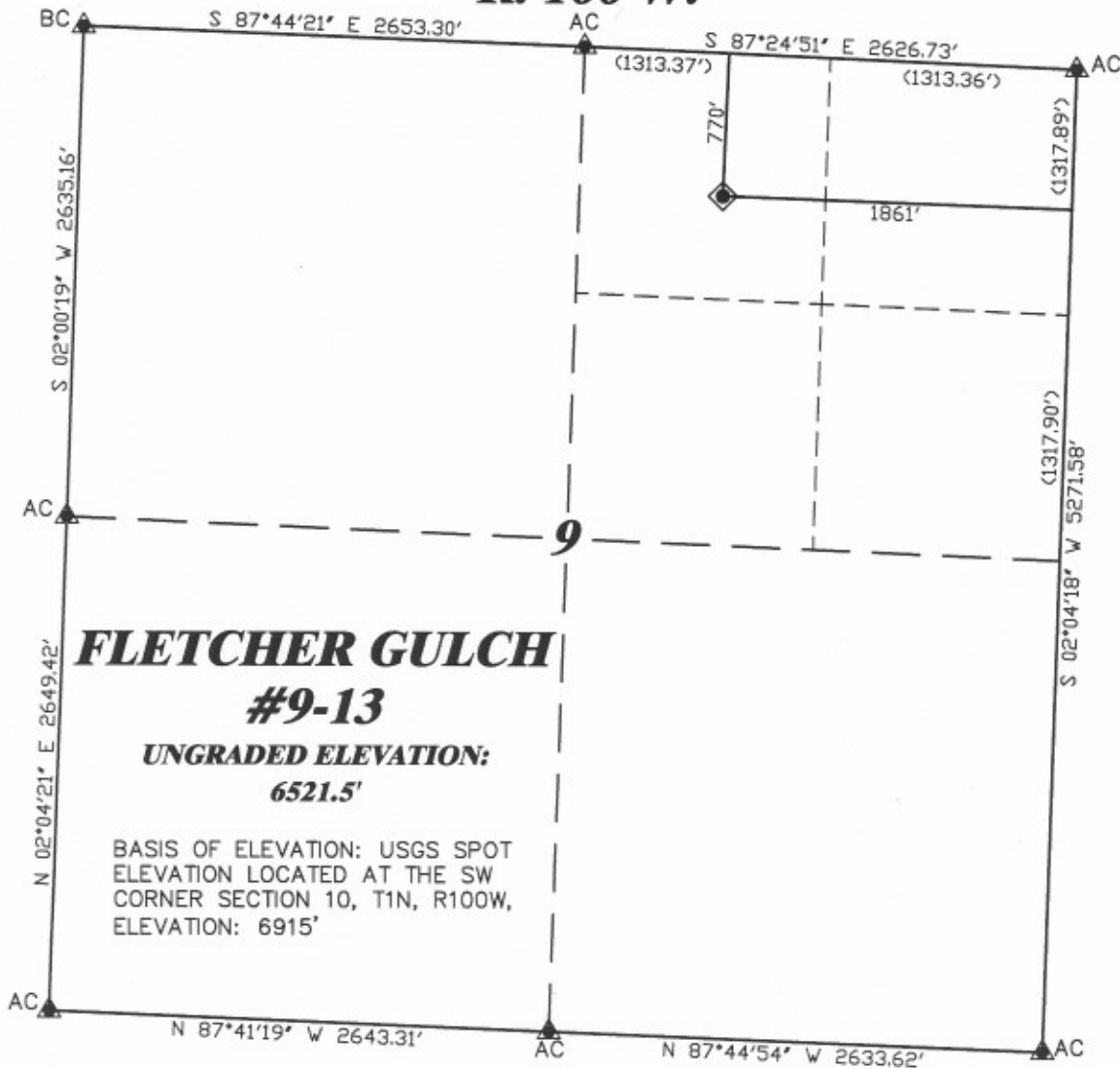


R. 100 W.



SCALE 1" = 1000'

T. 1 N.

LATITUDE (NAD 83)
NORTH 40.075481 DEG.
LONGITUDE (NAD 83)
WEST 108.619450 DEG.
LATITUDE (NAD 27)
NORTH 40.075506 DEG.
LONGITUDE (NAD 27)
WEST 108.618794 DEG.

NORTHING
285694.00
EASTING
1127382.97

DATUM
SPCS CON (NAD 27)



SURVEYOR'S STATEMENT

I, CLEMENT R. WILLIAMS, OF ROCK SPRINGS, WYOMING, HEREBY STATE: THIS MAP WAS MADE FROM NOTES TAKEN DURING AN ACTUAL FIELD SURVEY DONE UNDER MY DIRECT SUPERVISION ON JULY 25, 2008 AND THAT THIS PLAT CORRECTLY SHOWS THE LOCATION OF FLETCHER GULCH #9-13 AS STAKED ON THE GROUND.

GPS OPERATOR CHRIS HAMILTON
OBSERVED A PDOP OF 2.4.
ALL GPS OBSERVATIONS ARE IN
COMPLIANCE WITH COGCC RULE No.215.

LEGEND

- ◆ WELL LOCATION
- CALCULATED CORNER
- FOUND MONUMENT
- ▲ PREVIOUSLY FOUND MONUMENT



RIFFIN & ASSOCIATES, INC.
1414 ELK ST., ROCK SPRINGS, WY 82901

(307) 362-5028

DRAWN: 8/5/08 - MML

REVISED: NA

SCALE: 1" = 1000'

DRG JOB No. 16515

EXHIBIT 1

**PLAT OF DRILLING LOCATION
FOR
GENESIS GAS & OIL LLC.**

**770' F/NL & 1861' F/EL, SECTION 9,
T. 1 N., R. 100 W., 6th P.M.
RIO BLANCO COUNTY, COLORADO**