
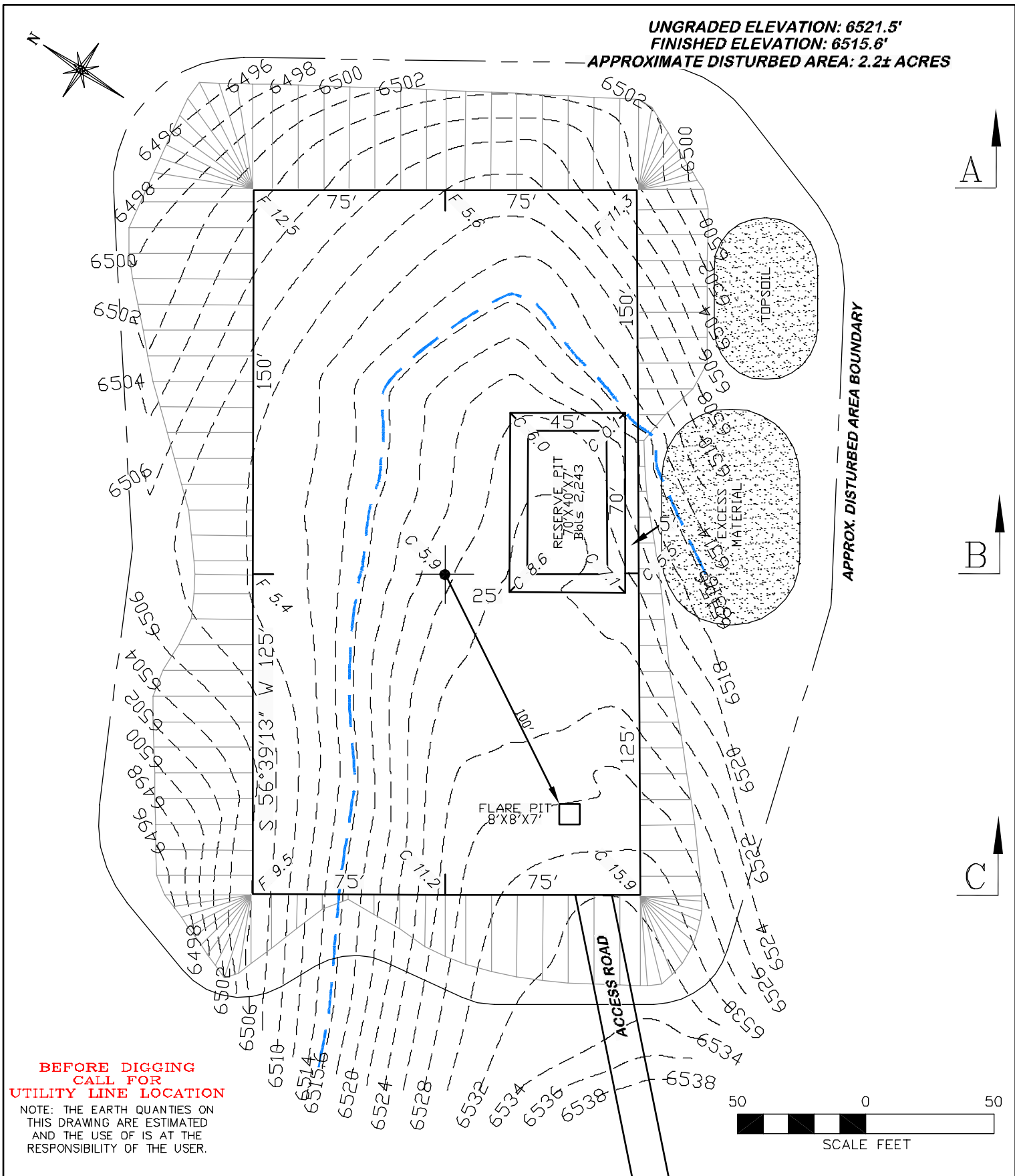
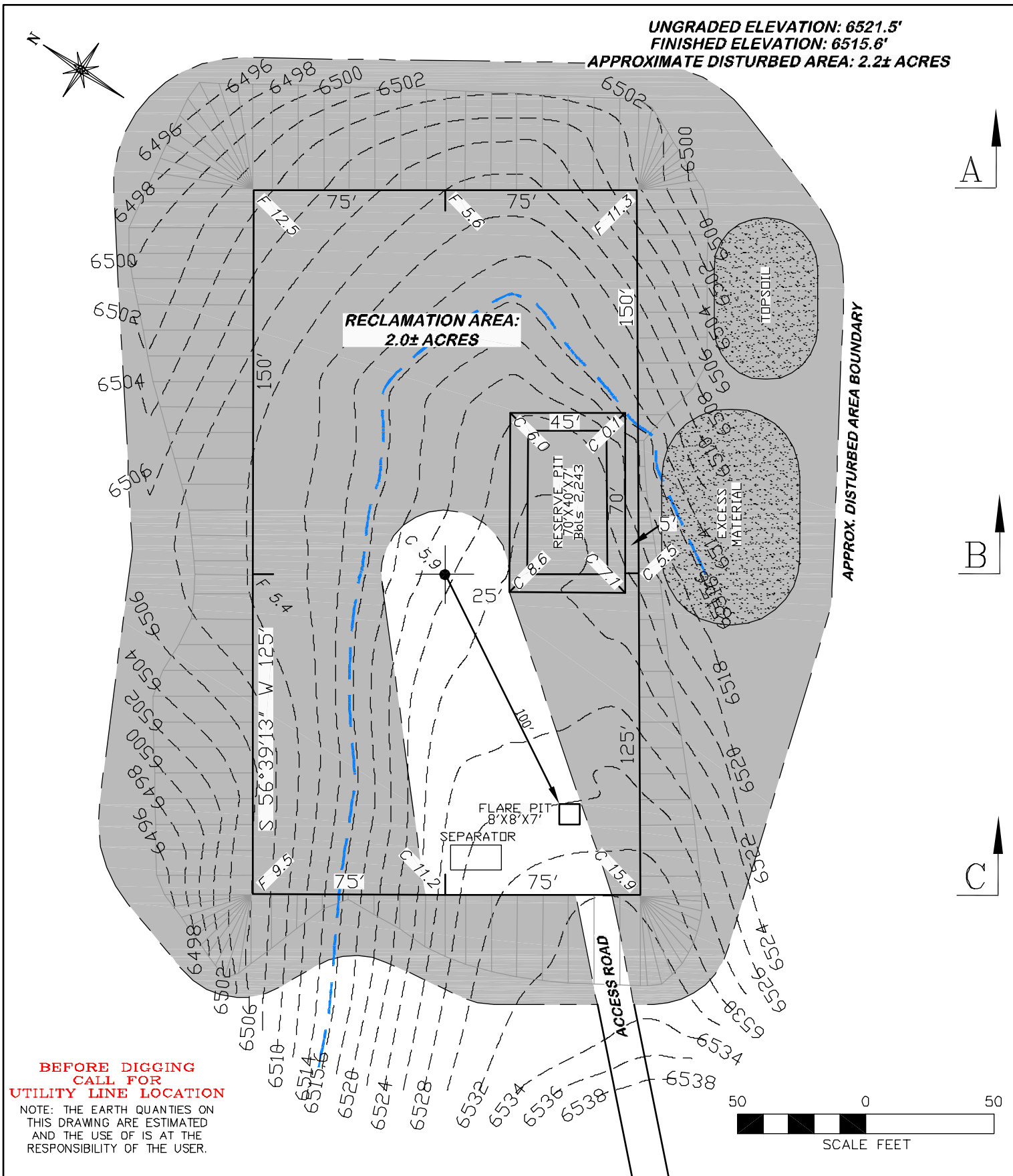


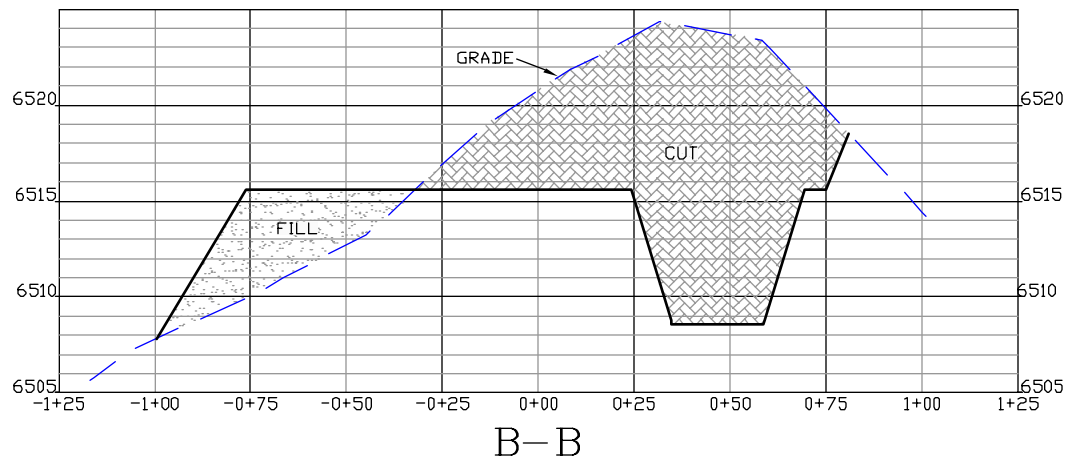
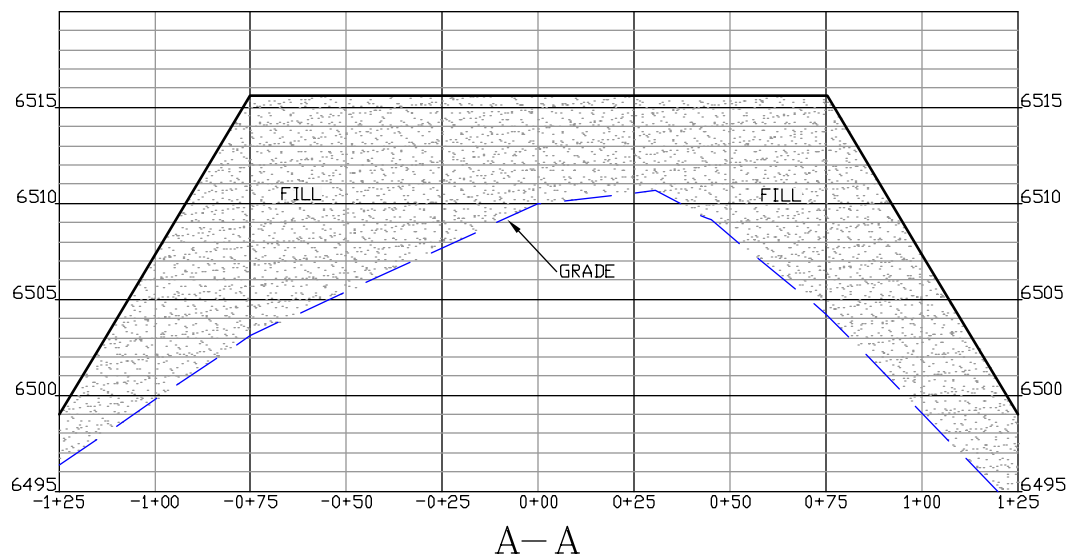
<div><b>RIFFIN &amp; ASSOCIATES, INC.</b> 1414 ELK ST., ROCK SPRINGS, WY 82901 (307) 362-5028</div>		<b>GENESIS GAS &amp; OIL LLC.</b> <b>FLETCHER GULCH #9-13</b>				
		<b>ESTIMATED EARTHWORK</b>				
		<b>ITEM</b>	<b>CUT</b>	<b>FILL</b>	<b>TOPSOIL</b>	<b>EXCESS</b>
<b>DRAWN: 8/5/08 - MML</b>	<b>SCALE: 1" = 50'</b>	<b>PAD</b>	<b>5923 CY</b>	<b>3030 CY</b>	<b>765 CY</b>	<b>2128 CY</b>
<b>REVISED: 6/1/09 - MMM</b>	<b>DRG JOB No. 16515</b>	<b>PIT</b>	<b>466 CY</b>			<b>466 CY</b>
<b>MISC. REVISIONS</b>	<b>EXHIBIT 2</b>	<b>TOTALS</b>	<b>6389 CY</b>	<b>3030 CY</b>	<b>765 CY</b>	<b>2594 CY</b>



<b>DRG</b> <b>RIFFIN &amp; ASSOCIATES, INC.</b> (307) 362-5028 1414 ELK ST., ROCK SPRINGS, WY 82901		<b>GENESIS GAS &amp; OIL LLC.</b> <b>FLETCHER GULCH #9-13</b>  <b>UNGRADED ELEVATION: 6521.5'</b> <b>FINISHED ELEVATION: 6515.6'</b>
<b>DRAWN: 8/5/08 - MML</b>	<b>SCALE: 1" = 60'</b>	
<b>REVISED: 6/1/09 - MMM</b>	<b>DRG JOB No. 16515</b>	
<b>MISC. REVISIONS</b>	<b>EXHIBIT 2A</b>	



<b>DRG</b> <b>RIFFIN &amp; ASSOCIATES, INC.</b> (307) 362-5028 1414 ELK ST., ROCK SPRINGS, WY 82901		<b>GENESIS GAS &amp; OIL LLC.</b> <b>FLETCHER GULCH #9-13</b>  <b>UNGRADED ELEVATION: 6521.5'</b> <b>FINISHED ELEVATION: 6515.6'</b>
<b>DRAWN: 8/5/08 - MML</b>	<b>SCALE: 1" = 60'</b>	
<b>REVISED: 6/1/09 - MMM</b>	<b>DRG JOB No. 16515</b>	
<b>MISC. REVISIONS</b>	<b>EXHIBIT 2A</b>	



(307) 362-5028

**DAVID R. GRIFFIN & ASSOCIATES, INC.**  
1414 ELK ST., ROCK SPRINGS, WY 82901

**GENESIS GAS & OIL LLC.**  
**FLETCHER GULCH #9-13**

**DRAWN: 8/5/08 - MML**

**HORZ. 1" = 50' VERT. 1" = 10'**

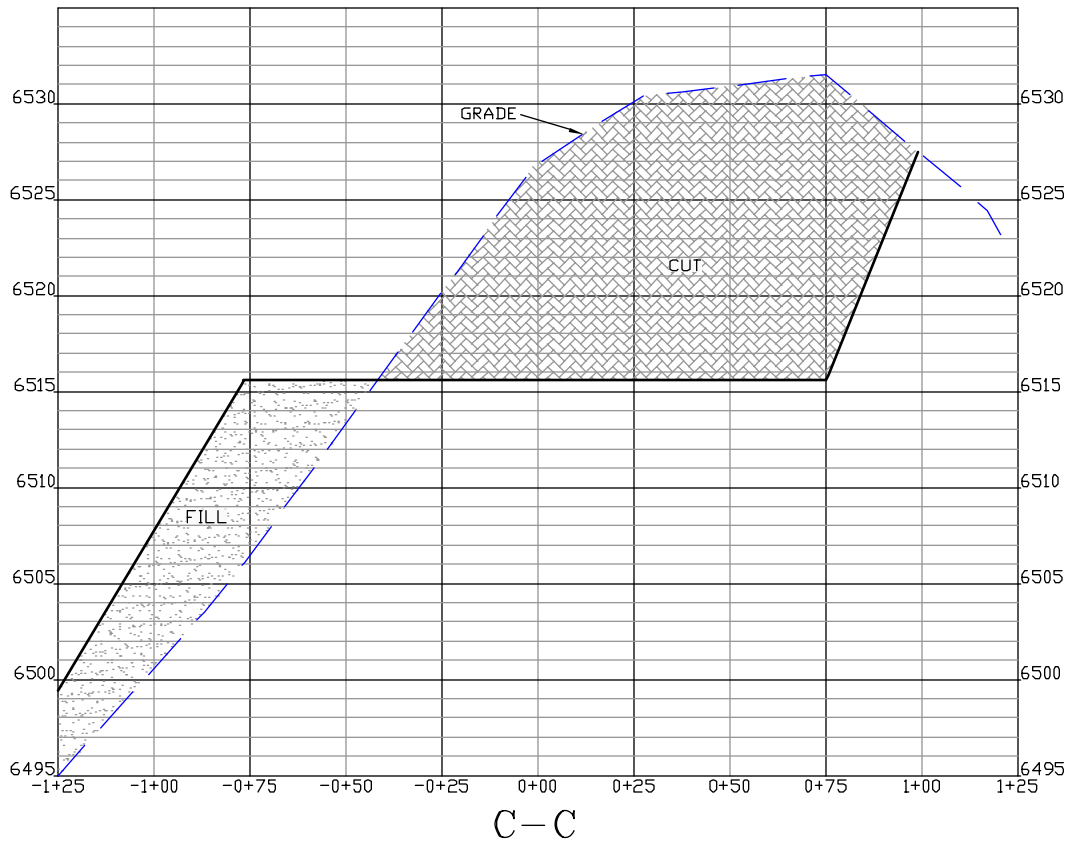
**REVISED: 6/1/09 - MMM**

**DRG JOB No. 16515**

**REVISED PAD ELEVATION**

**EXHIBIT 3**

**UNGRADED ELEVATION: 6521.5'**  
**FINISHED ELEVATION: 6515.6'**



(307) 362-5028

**RIFFIN & ASSOCIATES, INC.**  
1414 ELK ST., ROCK SPRINGS, WY 82901

**GENESIS GAS & OIL LLC.**  
**FLETCHER GULCH #9-13**

**DRAWN: 8/5/08 - MML**

**HORZ. 1" = 50' VERT. 1" = 10'**

**REVISED: 6/1/09 - MMM**

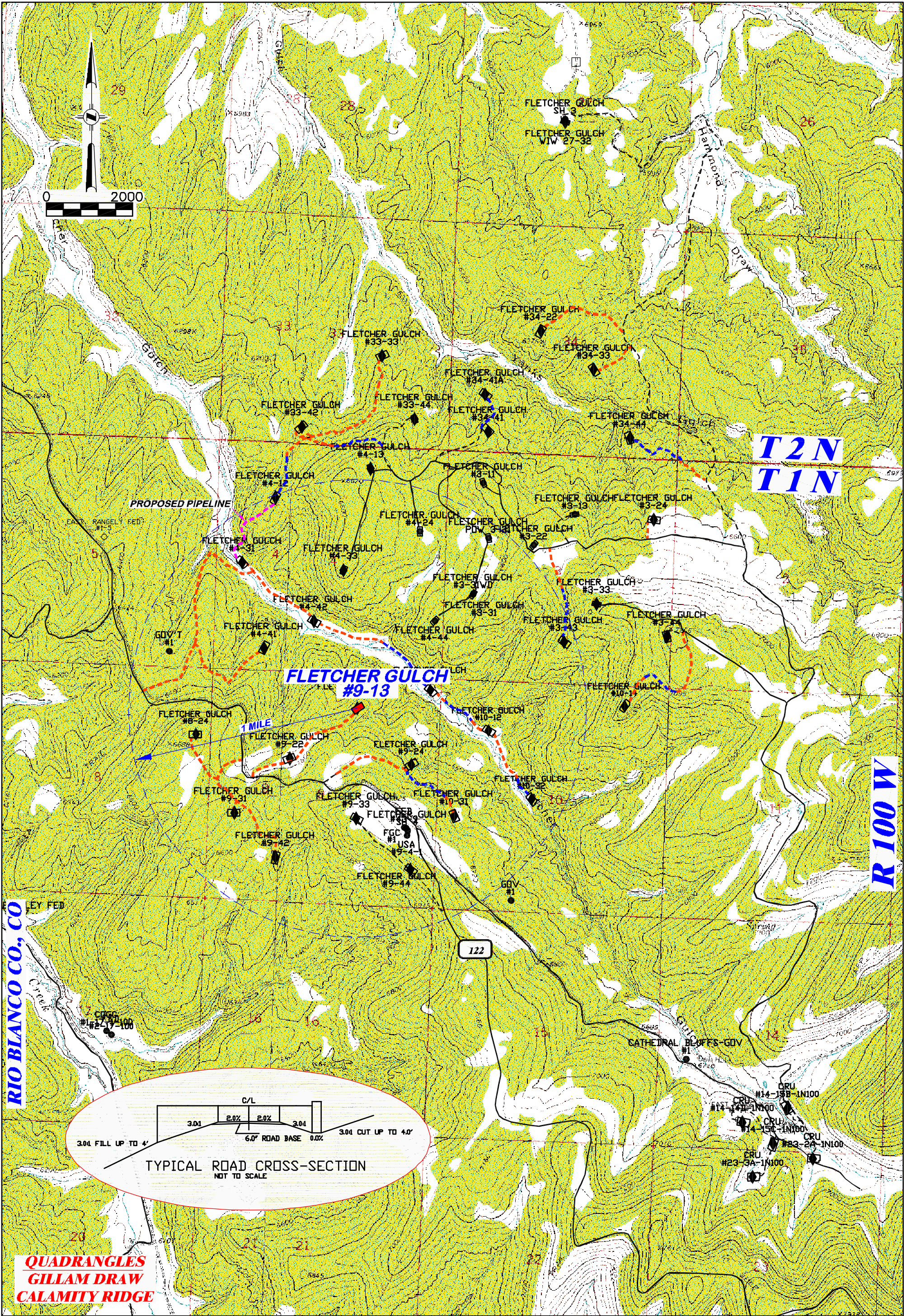
**DRG JOB No. 16515**

**REVISED PAD ELEVATION**

**EXHIBIT 3**

**UNGRADED ELEVATION: 6521.5'**  
**FINISHED ELEVATION: 6515.6'**





<b>KEY</b> --- LOCATIONS WITH PIPELINES IN CENTER OF ROAD --- LOCATIONS WITH PIPELINES IN DITCH BESIDE ROAD	<b>DRG</b> <b>RIFFIN &amp; ASSOCIATES, INC.</b> (307) 362-5028 1414 ELK ST., ROCK SPRINGS, WY 82901		<b>MAP OF FLETCHER GULCH PIPELINES FOR GENESIS GAS &amp; OIL LLC. FLETCHER GULCH #9-13</b>	
	DRAWN: 6/1/09 - MMM			SCALE: 1" = 2000'
	REVISED: NA			DRG JOB No.: 16515
	PIPELINES (ROAD VS. DITCH)			EXHIBIT 4A