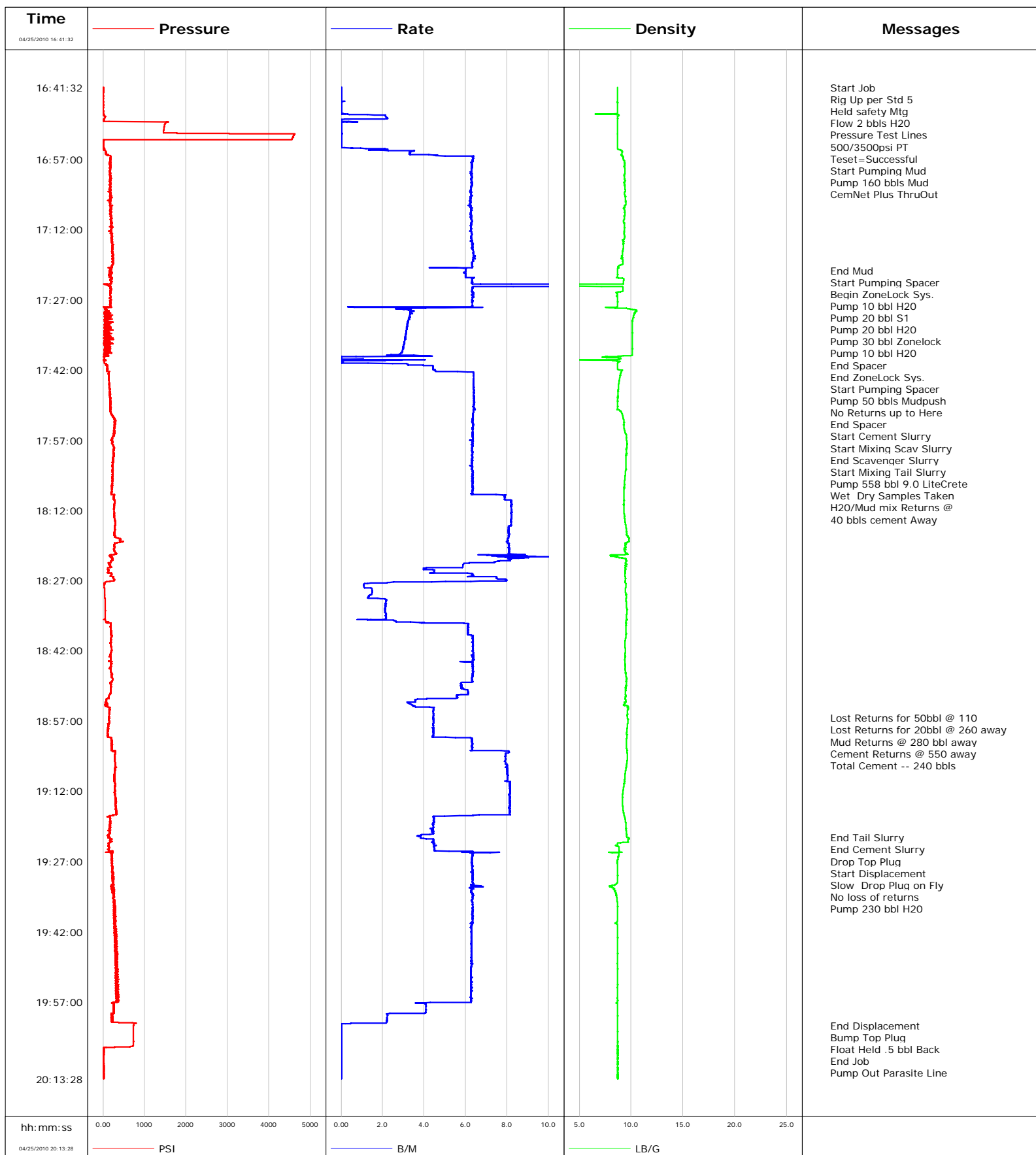


**Well** SGU 8507C-25 F25 496  
**Field** N Piceance  
**Engineer** B. Farnham  
**Country** United States

**Client** Encana Oil Gas  
**SIR No.** 350164  
**Job Type** 9 5/8" surface  
**Job Date** 04-25-2010





# Cementing Service Report

				Customer Encana Oil & Gas		Job Number 350164	
Well SGU 8507C-25 F25 496 SGU 8507C-25 F25 496			Location (legal) Patterson 306		Schlumberger Location		Job Start Apr/25/2010
Field N Piceance		Formation Name/Type shale		Deviation 15 deg	Bit Size 14.8 in	Well MD 3015.0 ft	Well TVD 3015.0 ft
County Garfield		State/Province Colorado		BHP	BHST 115 degF	BHCT 95 degF	Pore Press. Gradient
Well Master 0631177476		API/UWI					
Rig Name Patterson 306		Drilled For Gas		Service Via Land		Casing/Liner	
				Depth, ft	Size, in	Weight, lb/ft	Grade
Offshore Zone		Well Class New		Well Type New Well Completion			
				120.0	20.000	94.0	8RD
				3015.0	9.630	36.0	8RD
Drilling Fluid Type Bentonite		Max. Density 8.90 lb/gal		Plastic Viscosity 14.000 cP		Tubing/Drill Pipe	
				Depth,	Size,	Weight,	Grade
Service Line Cementing		Job Type 9 5/8" surface					
Max. Allowed Tub. Press 3000 psi		Max. Allowed Ann. Press 1500 psi		WH Connection Single Cement head		Perforations/Open Hole	
				Top,	Bottom,	No. of Shots	Total Interval
							Diameter
				Treat Down Casing	Displacement 230.0 bbl	Packer Type	Packer Depth
				Tubing Vol.	Casing Vol. 230.0 bbl	Annular Vol. 384.0 bbl	Openhole Vol. 635.0 bbl
Casing/Tubing Secured <input checked="" type="checkbox"/>		1 Hole Vol. Circulated prior to Cement <input type="checkbox"/>		Casing Tools		Squeeze Job	
Lift Pressure 1492 psi				Shoe Type guide		Squeeze Type	
Pipe Rotated <input type="checkbox"/>		Pipe Reciprocated <input type="checkbox"/>		Shoe Depth 3010.0 ft		Tool Type	
No. Centralizers 22		Top Plugs 1		Bottom Plugs		Stage Tool Type	
						Tool Depth	
Cement Head Type Single				Stage Tool Depth		Tail Pipe Size	
Job Scheduled For Apr/25/2010 15:00		Arrived on Location Apr/25/2010 13:00		Leave Location Apr/25/2010 21:00		Collar Type Float	
						Tail Pipe Depth	
						Sqz. Total Vol.	
Date	Time 24-hr clock	Treating Pressure PSI	Flow Rate B/M	Density LB/G	Volume BBL	Message	
04/25/2010	16:41:32					Start Job	
04/25/2010	16:41:32	3	0.0	8.68	0.0		
04/25/2010	16:41:33					Rig Up per Std 5	
04/25/2010	16:41:33	3	0.0	8.68	0.0		
04/25/2010	16:41:35					Held safety Mtg	
04/25/2010	16:41:35	2	0.0	8.68	0.0		
04/25/2010	16:41:36					Flow 2 bbls H2O	
04/25/2010	16:41:36	3	0.0	8.68	0.0		
04/25/2010	16:45:54					Pressure Test Lines	
04/25/2010	16:45:54	-0	0.0	8.68	0.0		
04/25/2010	16:46:32	-0	0.0	8.68	0.0		
04/25/2010	16:51:32	4627	0.1	8.69	2.1		
04/25/2010	16:52:38					500/3500psi PT	
04/25/2010	16:52:38	4559	0.0	8.69	2.1		
04/25/2010	16:52:39					Treset=Successful	
04/25/2010	16:52:39	4558	0.0	8.69	2.1		
04/25/2010	16:53:14					Start Pumping Mud	
04/25/2010	16:53:14	12	0.0	8.69	2.1		
04/25/2010	16:53:16					Pump 160 bbls Mud	
04/25/2010	16:53:16	12	0.0	8.69	2.1		
04/25/2010	16:53:17					CemNet Plus ThruOut	

Well			Field	Job Start	Customer	Job Number
SGU 8507C-25 F25 496 SGU 8507C-25 F25 496			N Piceance	Apr/25/2010	Encana Oil & Gas	350164
Date	Time 24-hr clock	Treating Pressure PSI	Flow Rate B/M	Density LB/G	Volume BBL	Message
04/25/2010	16:56:32	192	6.4	9.28	9.1	
04/25/2010	17:01:32	170	6.3	9.39	40.7	
04/25/2010	17:06:32	180	6.2	9.50	72.0	
04/25/2010	17:11:32	198	6.3	9.36	103.3	
04/25/2010	17:16:32	225	6.4	9.19	134.8	
04/25/2010	17:20:39					End Mud
04/25/2010	17:20:39	175	6.0	8.68	160.7	
04/25/2010	17:20:49					Start Pumping Spacer
04/25/2010	17:20:49	151	6.0	8.68	161.7	
04/25/2010	17:21:02					Begin ZoneLock Sys.
04/25/2010	17:21:02	201	6.0	8.68	163.0	
04/25/2010	17:21:13					Pump 10 bbl H2O
04/25/2010	17:21:13	167	5.9	8.68	164.1	
04/25/2010	17:21:32	159	6.0	8.68	166.0	
04/25/2010	17:21:43					Pump 20 bbl S1
04/25/2010	17:21:43	144	6.0	8.68	167.1	
04/25/2010	17:21:54					Pump 20 bbl H2O
04/25/2010	17:21:54	177	6.0	8.68	168.2	
04/25/2010	17:22:17					Pump 30 bbl Zonelock
04/25/2010	17:22:17	189	6.4	8.69	170.5	
04/25/2010	17:26:32	183	6.3	8.69	206.3	
04/25/2010	17:31:32	43	3.3	10.14	228.9	
04/25/2010	17:32:43					Pump 10 bbl H2O
04/25/2010	17:32:43	106	3.2	10.13	232.7	
04/25/2010	17:36:32	60	3.0	10.12	244.6	
04/25/2010	17:40:12					End Spacer
04/25/2010	17:40:12	29	0.0	8.83	252.8	
04/25/2010	17:40:14					End ZoneLock Sys.
04/25/2010	17:40:14	29	0.0	8.79	252.8	
04/25/2010	17:40:18					Start Pumping Spacer
04/25/2010	17:40:18	27	0.1	8.76	252.8	
04/25/2010	17:40:24					Pump 50 bbls Mudpush
04/25/2010	17:40:24	29	0.0	8.73	252.8	
04/25/2010	17:40:25					No Returns up to Here
04/25/2010	17:40:25	28	0.0	8.73	252.8	
04/25/2010	17:41:32	106	4.4	8.69	256.6	
04/25/2010	17:46:32	163	6.4	8.75	287.0	
04/25/2010	17:50:46					End Spacer
04/25/2010	17:50:46	184	6.4	8.98	314.1	
04/25/2010	17:50:57					Start Cement Slurry
04/25/2010	17:50:57	195	6.4	9.05	315.2	
04/25/2010	17:50:59					Start Mixing Scav Slurry
04/25/2010	17:50:59	188	6.4	9.06	315.4	
04/25/2010	17:51:32	214	6.4	9.16	318.9	
04/25/2010	17:53:00					End Scavenger Slurry
04/25/2010	17:53:00	274	6.3	9.31	328.2	
04/25/2010	17:53:58					Start Mixing Tail Slurry
04/25/2010	17:53:58	276	6.3	9.31	334.4	
04/25/2010	17:54:47					Pump 558 bbl 9.0 LiteCrete
04/25/2010	17:54:47	273	6.3	9.36	339.6	
04/25/2010	17:55:48					Wet Dry Samples Taken
04/25/2010	17:55:48	263	6.3	9.54	346.0	
04/25/2010	17:56:32	233	6.4	9.53	350.7	
04/25/2010	18:01:32	231	6.3	9.51	382.3	

Well			Field	Job Start	Customer	Job Number
SGU 8507C-25 F25 496 SGU 8507C-25 F25 496			N Piceance	Apr/25/2010	Encana Oil & Gas	350164
Date	Time 24-hr clock	Treating Pressure PSI	Flow Rate B/M	Density LB/G	Volume BBL	Message
04/25/2010	18:08:05					H20/Mud mix Returns @
04/25/2010	18:08:05	222	6.3	9.32	423.7	
04/25/2010	18:09:04					40 bbls cement Away
04/25/2010	18:09:04	265	7.9	9.32	430.6	
04/25/2010	18:11:32	263	8.2	9.31	450.6	
04/25/2010	18:16:32	284	8.1	9.55	491.5	
04/25/2010	18:21:32	181	7.1	8.13	531.9	
04/25/2010	18:26:32	249	7.5	9.46	564.1	
04/25/2010	18:31:32	52	2.2	9.53	576.1	
04/25/2010	18:36:32	193	6.1	9.51	589.1	
04/25/2010	18:41:32	208	6.4	9.44	620.3	
04/25/2010	18:46:32	199	6.3	9.47	652.0	
04/25/2010	18:51:32	151	5.6	9.49	682.6	
04/25/2010	18:56:18					Lost Returns for 50bbl @ 110
04/25/2010	18:56:18	145	4.5	9.64	702.8	
04/25/2010	18:56:19					Lost Returns for 20bbl @ 260 away
04/25/2010	18:56:19	145	4.5	9.64	702.9	
04/25/2010	18:56:22					Mud Returns @ 280 bbl away
04/25/2010	18:56:22	149	4.5	9.64	703.1	
04/25/2010	18:56:24					Cement Returns @ 550 away
04/25/2010	18:56:24	152	4.5	9.64	703.2	
04/25/2010	18:56:28					Total Cement -- 240 bbls
04/25/2010	18:56:28	160	4.4	9.66	703.5	
04/25/2010	18:56:32	142	4.4	9.66	703.8	
04/25/2010	19:01:32	219	6.3	9.55	728.0	
04/25/2010	19:06:32	290	8.0	9.55	764.8	
04/25/2010	19:11:32	283	8.1	9.25	805.0	
04/25/2010	19:16:32	329	8.1	9.27	845.7	
04/25/2010	19:21:32	127	3.7	9.55	870.1	
04/25/2010	19:21:55					End Tail Slurry
04/25/2010	19:21:55	143	3.8	9.73	871.5	
04/25/2010	19:21:59					End Cement Slurry
04/25/2010	19:21:59	145	3.8	9.79	871.8	
04/25/2010	19:22:05					Drop Top Plug
04/25/2010	19:22:05	161	3.9	9.81	872.1	
04/25/2010	19:22:09					Start Displacement
04/25/2010	19:22:09	179	4.1	9.81	872.4	
04/25/2010	19:22:11					Slow Drop Plug on Fly
04/25/2010	19:22:11					No loss of returns
04/25/2010	19:22:11	179	4.4	9.80	872.6	
04/25/2010	19:25:00					Pump 230 bbl H2O
04/25/2010	19:25:00	116	6.1	8.84	885.5	
04/25/2010	19:26:32	213	6.3	8.73	895.2	
04/25/2010	19:31:32	253	6.3	8.69	926.9	
04/25/2010	19:36:32	255	6.3	8.70	958.5	
04/25/2010	19:41:32	300	6.3	8.71	990.1	
04/25/2010	19:46:32	293	6.3	8.71	1021.5	
04/25/2010	19:51:32	303	6.3	8.71	1052.9	
04/25/2010	19:56:32	362	6.3	8.71	1084.2	
04/25/2010	20:01:32	710	2.2	8.71	1102.1	
04/25/2010	20:02:01					End Displacement
04/25/2010	20:02:01	738	0.0	8.71	1102.3	
04/25/2010	20:02:02					Bump Top Plug
04/25/2010	20:02:02	737	0.0	8.71	1102.3	

Well SGU 8507C-25 F25 496 SGU 8507C-25 F25 496			Field N Piceance		Job Start Apr/25/2010		Customer Encana Oil & Gas		Job Number 350164	
Date	Time 24-hr clock	Treating Pressure PSI	Flow Rate B/M	Density LB/G	Volume BBL	Message				
04/25/2010	20:03:59	728	0.0	8.71	1102.3					
04/25/2010	20:06:32	714	0.0	8.71	1102.3					
04/25/2010	20:09:01					End Job				
04/25/2010	20:09:01	11	0.0	8.71	1102.3					
04/25/2010	20:09:08					Pump Out Parasite Line				
04/25/2010	20:09:08	11	0.0	8.71	1102.3					

Post Job Summary

Average Pump Rates, bbl/min					Volume of Fluid Injected, bbl					
Slurry 5.0	N2	Mud	Maximum Rate 8.0		Total Slurry 558.0	Mud 160.0	Spacer 90.0	N2		
Treating Pressure Summary, psi					Breakdown Fluid					
Maximum 3500	Final 1100	Average 300	Bump Plug to 750	Breakdown	Type FreshWater	Volume 764.0 bbl		Density 8.34 lb/gal		
Avg. N2 Percent		Designed Slurry Volume 558.0 bbl		Displacement 230.0 bbl		Mix Water Temp 60 degF		Cement Circulated to Surface? <input checked="" type="checkbox"/>		Volume 240.0 bbl
								Washed Thru Perfs <input type="checkbox"/>		To
Customer or Authorized Representative Mike Quintana				Schlumberger Supervisor B. Farnham				Circulation Lost <input checked="" type="checkbox"/>		Job Completed <input checked="" type="checkbox"/>
								-		-



# Service Quality Evaluation

<b>Client:</b>	Encana Oil & Gas
<b>Field:</b>	N Piceance
<b>Rig:</b>	Patterson 306
<b>Well:</b>	SGU 8507C-25 F25 496
<b>Service Line:</b>	Cementing
<b>Job Type:</b>	9 5/8" surface

<b>Service Order #:</b>	
<b>Date:</b>	Apr/04/2010
<b>Operating Time:</b>	0.0
<b>Client Rep:</b>	Encana Oil & Gas
<b>Schlumberger Engineer:</b>	B. Farnham
<b>Schlumberger FSM:</b>	

**Main Objective:**

**To be completed by Company Rep. Please answer Y (Yes) or N (No) and add any comments below.**

		Score	Yes / No				Result
<b>1</b>	<b>HSE</b>						
1a	Free of lost time injury and compliance with SLB and loc. spec. HSE practice	5	yes	<input type="checkbox"/>	no	<input checked="" type="checkbox"/>	0
1b	Free of environmental spill or non-compliant discharge	5	yes	<input type="checkbox"/>	no	<input checked="" type="checkbox"/>	0
1c	Free of RIRs	5	yes	<input type="checkbox"/>	no	<input checked="" type="checkbox"/>	0
1d	Wellsite left clean	4	yes	<input type="checkbox"/>	no	<input checked="" type="checkbox"/>	0
Sub-total							0%

<b>2</b>	<b>Design / Preparation</b>						
2a	Program incl. job simulation (CemCADE) & pump schedule / tool hydraulic calcs	3	yes	<input type="checkbox"/>	no	<input checked="" type="checkbox"/>	0
2b	Equipment maintenance schedule completed / Green tagged	2	yes	<input type="checkbox"/>	no	<input checked="" type="checkbox"/>	0
2c	All materials and equipment required for job/contingency checked & on location	2	yes	<input type="checkbox"/>	no	<input checked="" type="checkbox"/>	0
2d	Safety / pre-job meeting conducted with all involved present	2	yes	<input type="checkbox"/>	no	<input checked="" type="checkbox"/>	0
Sub-total							0%

<b>3</b>	<b>Execution</b>						
3a	Lost time < 30 mins	3	yes	<input type="checkbox"/>	no	<input checked="" type="checkbox"/>	0
3b	Equipment pressure tested succesfully	3	yes	<input type="checkbox"/>	no	<input checked="" type="checkbox"/>	0
3c	All key parameters monitored and recorded accurately (Pressure, Rate, Density)	2	yes	<input type="checkbox"/>	no	<input checked="" type="checkbox"/>	0
3d	Plugs / darts released and tested succesfully	2	yes	<input type="checkbox"/>	no	<input checked="" type="checkbox"/>	0
3e	Density variation met expectations	2	yes	<input type="checkbox"/>	no	<input checked="" type="checkbox"/>	0
3f	Personnel performed as per expectations	2	yes	<input type="checkbox"/>	no	<input checked="" type="checkbox"/>	0
3g	Equipment performed as per expectations	2	yes	<input type="checkbox"/>	no	<input checked="" type="checkbox"/>	0
3h	Job pumped per design	3	yes	<input type="checkbox"/>	no	<input checked="" type="checkbox"/>	0
3i	Did job start on time	2	yes	<input type="checkbox"/>	no	<input checked="" type="checkbox"/>	0
3j	Free of Operational failures (screen out, Cementing Example, etc.)	3	yes	<input type="checkbox"/>	no	<input checked="" type="checkbox"/>	0
Sub-total							0%

<b>4</b>	<b>Evaluation</b>						
4a	Main job objective achieved with no consequential non-productive time	10	yes	<input type="checkbox"/>	no	<input checked="" type="checkbox"/>	0
Sub-total							0%

**Total** 0%

**Comments:** (Please include a brief explanation for a "NO" response and summarize any innovations attempted on this well.)

<b>Client:</b>	<b>Schlumberger:</b>
<b>Client Signature:</b>	<b>Schlumberger Signature:</b>