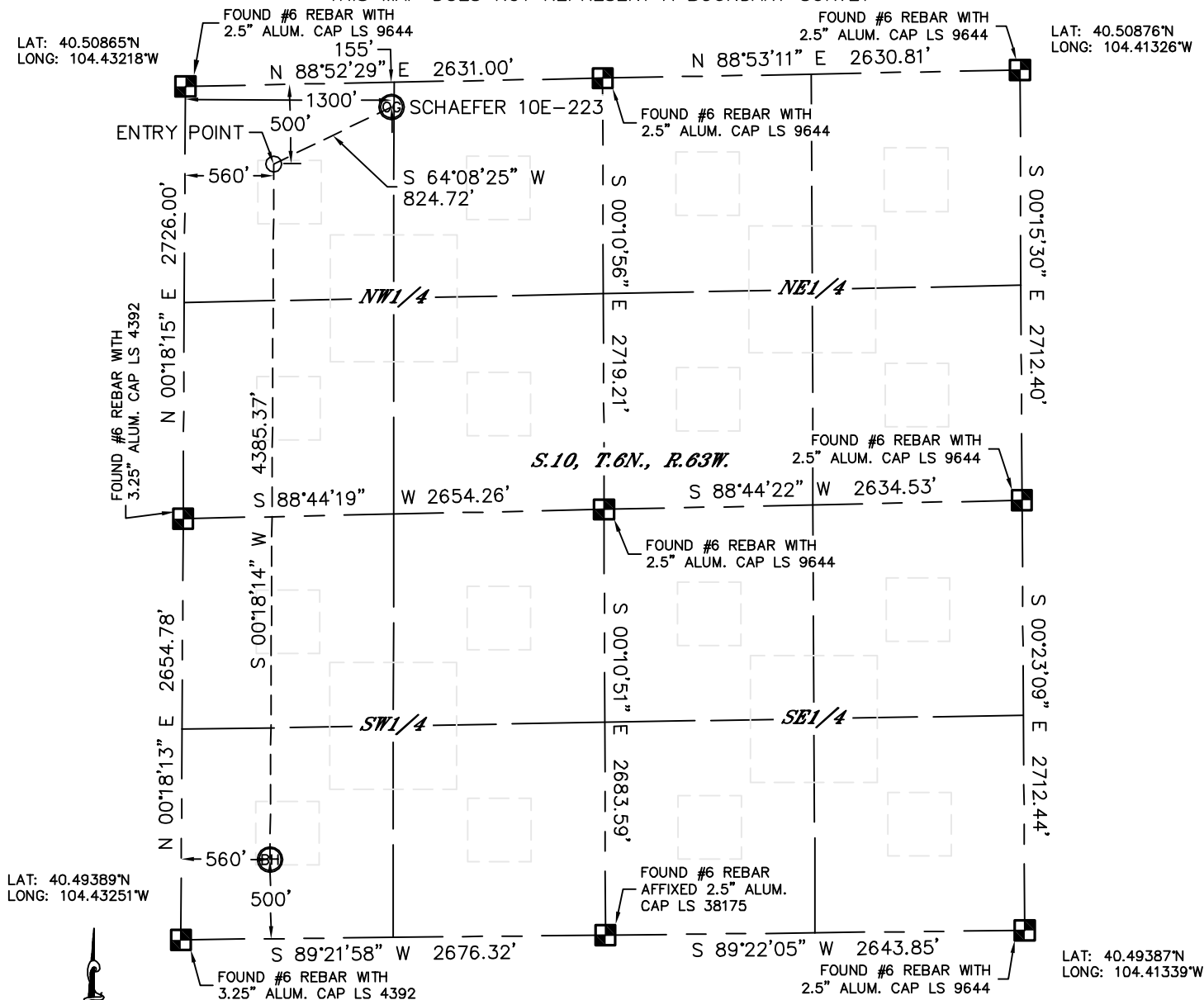


Lat40°, Inc. 1635 Foxtrail Drive, Suite 325 Loveland, CO 970-776-3321

# WELL LOCATION CERTIFICATE

SECTION: 10  
TOWNSHIP: 6N  
RANGE: 63W

THIS MAP DOES NOT REPRESENT A BOUNDARY SURVEY



In accordance with a request from Jeff Dillingham with PDC ENERGY Lat40', Inc. has determined the surface location of the SCHAEFER 10E-223 to be 155' from the NORTH line and 1300' from the WEST line and the bottom hole to be 500' from the SOUTH line and 560' from the WEST line as measured at right angles from the section lines of Section 10, Township 6 North, Range 63 West of the Sixth Principal Meridian, County of Weld, State of Colorado.

I hereby state that this Well Location Certificate was prepared by me, or under my direct supervision, that the fieldwork was completed on 2/16/2012, for and on behalf of PDC ENERGY. That this is not a Land Survey Plat or an Improvement Survey Plat, and that it is not to be relied upon for establishment of fence, building, or other future improvement lines.

**NOTE:**

- 1) Bearings shown are Grid Bearings of the Colorado State Plane Coordinate System, North Zone, North American Datum 1983/2007. The lineal dimensions as contained herein are based upon the "U.S. Survey Foot."
- 2) Ground elevations are based on an observed GPS elevation (NAVD 1988 DATUM).
- 3) IMPROVEMENTS: See LOCATION DRAWING for all visible improvements within 400' of disturbed area.
- 4) SURFACE USE: RANGELAND
- 5) INSTRUMENT OPERATOR: WYATT HALL

SURFACE LOCATION

LAT: 40.50826°N  
LONG: 104.42751°W  
PDOP: 1.2  
ELEV: 4697'  
1/4,1/4: NW1/4NW1/4  
NEAREST PROPERTY LINE: 155' N

BOTTOM HOLE

LAT: 40.49526°N  
LONG: 104.43047°W



ENTRY POINT

LAT: 40.50729°N  
LONG: 104.43020°W

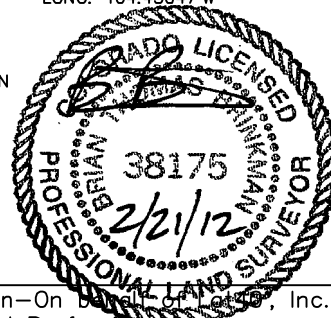
**NOTE**

According to Colorado law, you must commence any legal action based upon any defect in this W.L.C. within three years after you discover such defect. In no event, may any action based upon any defect in this survey be commenced more than ten years after the date of the certificate shown hereon. (13-80-105 C.R.S.)

### LEGEND

-  = ALIQUOT MONUMENT AS DESCRIBED  
 = CALCULATED POSITION

Brian T. Brinkman—On behalf of AT&T, Inc.  
Colorado Licensed Professional Land Surveyor No. 38175  
DATE: 2/20/2012  
PROJECT#: 2011292



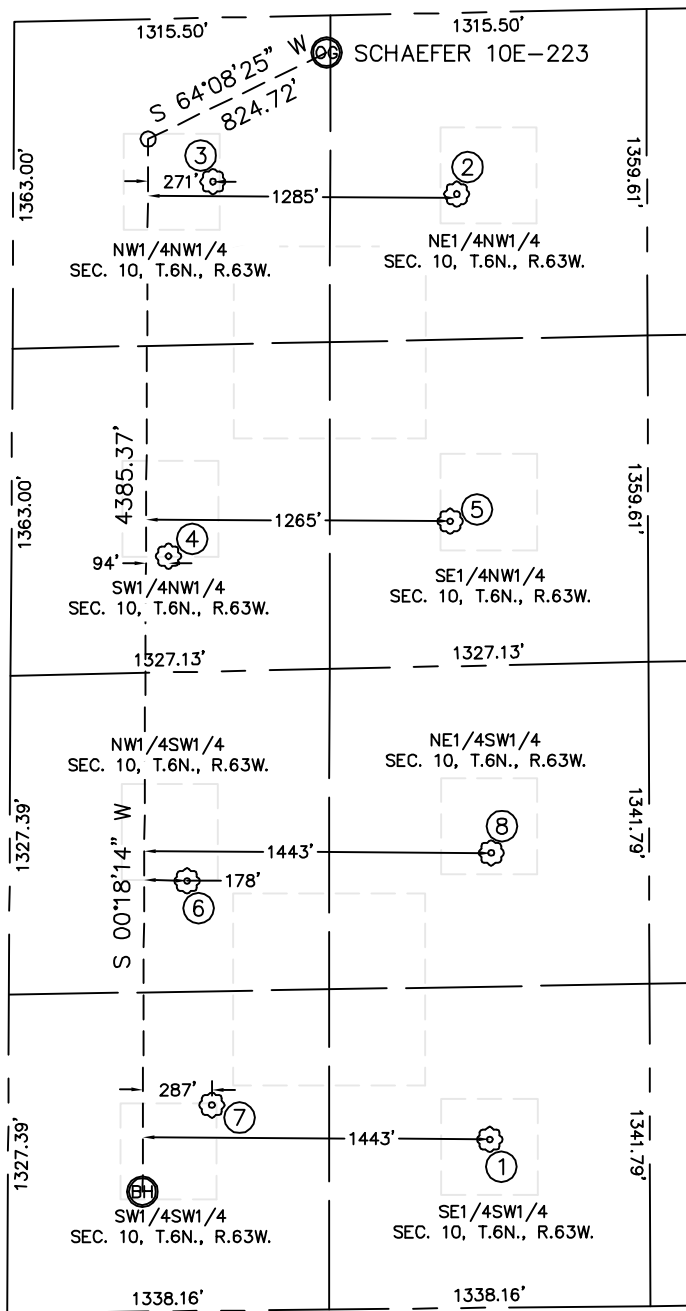


Lat40°, Inc. 1635 Foxtrail Drive, Suite 325 Loveland, CO 970-776-3321

# SITE SKETCH

## SCHAEFER 10E-223

SECTION: 10  
TOWNSHIP: 6N  
RANGE: 63W



①  
WALKER 24-10  
SE1/4SW1/4  
701' FSL  
2003' FWL  
LAT-40.49581°N  
LONG-104.42527°W  
PDOP: 1.5  
ELEV: 4714'

②  
CORNISH 21-10  
NE1/4NW1/4  
755' FNL  
1845' FWL  
LAT-40.50662°N  
LONG-104.42559°W  
PDOP: 1.3  
ELEV: 4696'

③  
CORNISH 11-10  
NW1/4NW1/4  
683' FNL  
831' FWL  
LAT-40.50680°N  
LONG-104.42923°W  
PDOP: 1.6  
ELEV: 4695'

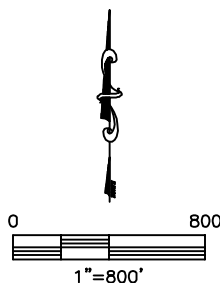
④  
CORNISH 12-10  
SW1/4NW1/4  
2239' FNL  
654' FWL  
LAT-40.50252°N  
LONG-104.42997°W  
PDOP: 2.1  
ELEV: 4690'

⑤  
CORNISH 22-10  
SE1/4NW1/4  
2117' FNL  
1825' FWL  
LAT-40.50288°N  
LONG-104.42575°W  
PDOP: 2.1  
ELEV: 4691'

⑥  
WALKER 13-10  
NW1/4SW1/4  
1792' FSL  
738' FWL  
LAT-40.49881°N  
LONG-104.42975°W  
PDOP: 2.2  
ELEV: 4695'

⑦  
WALKER 14-10  
SW1/4SW1/4  
858' FSL  
847' FWL  
LAT-40.49624°N  
LONG-104.42942°W  
PDOP: 1.7  
ELEV: 4696'

⑧  
WALKER 23-10  
NE1/4SW1/4  
1895' FSL  
2003' FWL  
LAT-40.49908°N  
LONG-104.42519°W  
PDOP: 2.1  
ELEV: 4720'



DATE: 2/20/2012  
PROJECT#: 2011292