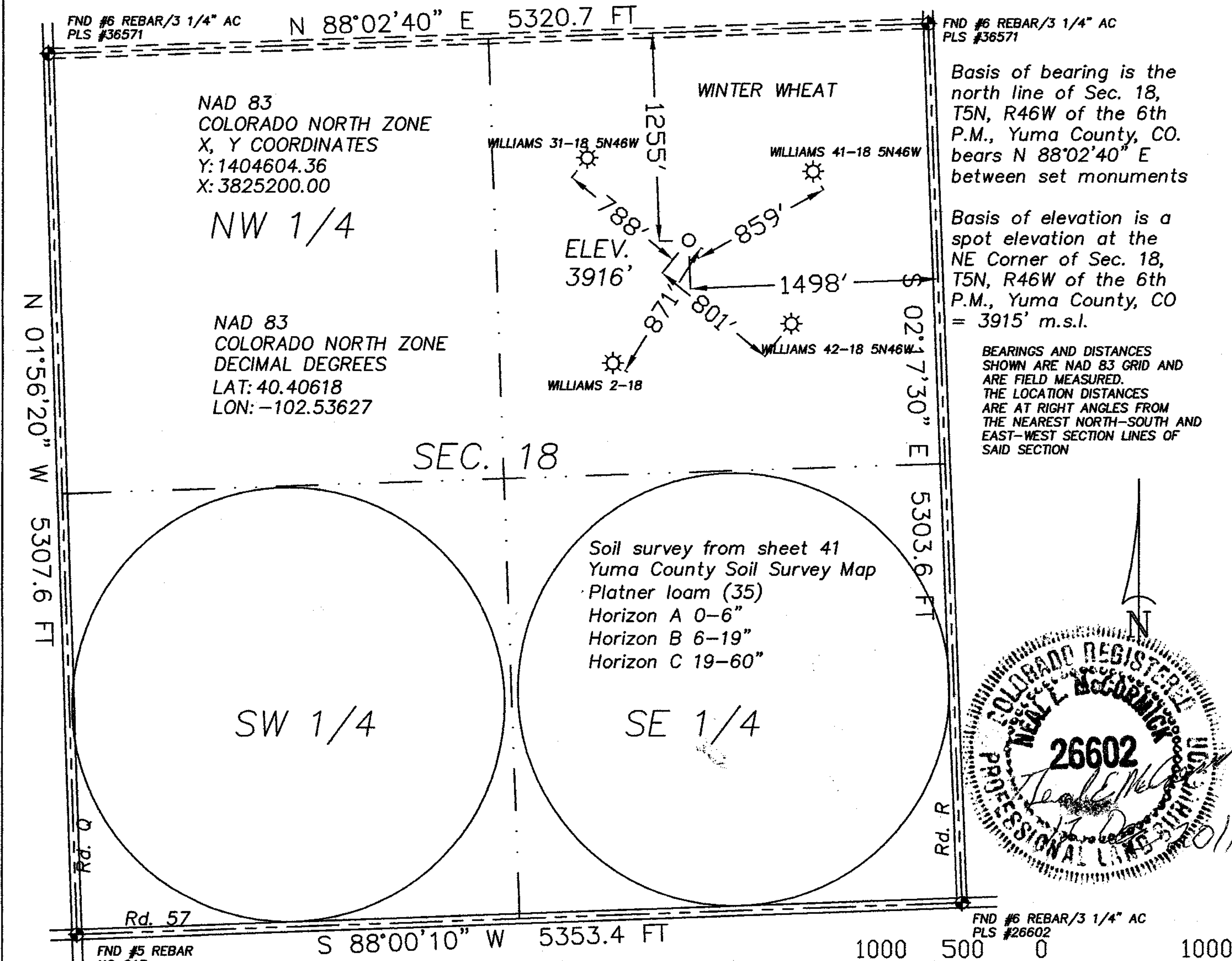



The accompanying plat is an accurate representation showing the location of a proposed well. This location may be described as a point 1255 feet South of the North line, and 1498 feet West of the East line of Section 18, Township 5 North, Range 46 West of the 6th P.M., Yuma County, Colorado. The surface elevation at this point is 3916 feet above m.s.l. Note: This is not a land survey plat. There are no visible improvements within 400 feet of the location.



- 2.191 PDOP  
☼ Dual Producer  
● Oil well  
☼ Gas Well  
○ Dry Hole
- GPS OPERATOR: NEAL MCCORMICK  
○ Location  
- x - Fence Line  
- . . - Half-Sec. Line  
- - - - Section Line
- ===== Road  
===== Trail  
◆ Survey Monument
- Scale 1" = 1000'

 <p><b>GREAT PLAINS SURVEYING, INC.</b></p> <p>20575 C.R. 21 Haxtun, CO 80731</p> <p>Phone 970-774-3602 Email <a href="mailto:gps@pctelcom.coop">gps@pctelcom.coop</a></p>	DATE OF FIELD WORK: 10 DECEMBER 2011	DATE OF DRAWING: 12 DECEMBER 2011
	WISE DB-18 5N46W	
	NW 1/4 NE 1/4 SEC. 18, T5N, R46W	
	AUGUSTUS ENERGY PARTNERS, LLC.	
	YUMA COUNTY, COLORADO	