



# CEMENT BOND LOG

Company ENCANA OIL & GAS (USA) INC.

Well KENNEDY 8-4-21

Field WATTENBERG

County WELD State CO

Location: API #: 05-123-31974-00

SHL: 1595' FNL &amp; 937' FEL SE NE

BHL: 2690' FNL &amp; 50' FEL SE N

SEC: 21 TWP: 2N RGE: 68W

datum	GROUND LEVEL	Elevation	4891
-------	--------------	-----------	------

### Drilling Measured From KB

02 MARCH 20

ONE	87631
-----	-------

	5440'
--	-------

Interval	5440"
CLIBANCE	

	7.875"
--	--------

WATER	
0.34 BPG	

mp.	N/A
-----	-----

3500	N/A
------	-----

ottom	N/A
-------	-----

10501W PKD	ALLT CO
------------	---------

M. CARPENT

10	
11	
12	
13	
14	
15	
16	
17	
18	
19	
20	
21	
22	
23	
24	
25	
26	
27	
28	
29	
30	
31	
32	
33	
34	
35	
36	
37	
38	
39	
40	
41	
42	
43	
44	
45	
46	
47	
48	
49	
50	
51	
52	
53	
54	
55	
56	
57	
58	
59	
60	
61	
62	
63	
64	
65	
66	
67	
68	
69	
70	
71	
72	
73	
74	
75	
76	
77	
78	
79	
80	
81	
82	
83	
84	
85	
86	
87	
88	
89	
90	
91	
92	
93	
94	
95	
96	
97	
98	
99	
100	

From	To
------	----


--	--	--	--

Size M/L

8.625	24
-------	----

4.5	11
-----	----

[illegible]

15 JANUARY 2007

accuracy or  
for any loss,  
employees. These

### Comments

CORRELATED TO HALLIBURTON CEMENT BOND LOG DATED 16 JAN 2012

WE APPRECIATE YOUR BUSINESS. MESA WIRELINE LLC, GRAND JUNCTION CO. (970) 257-0458

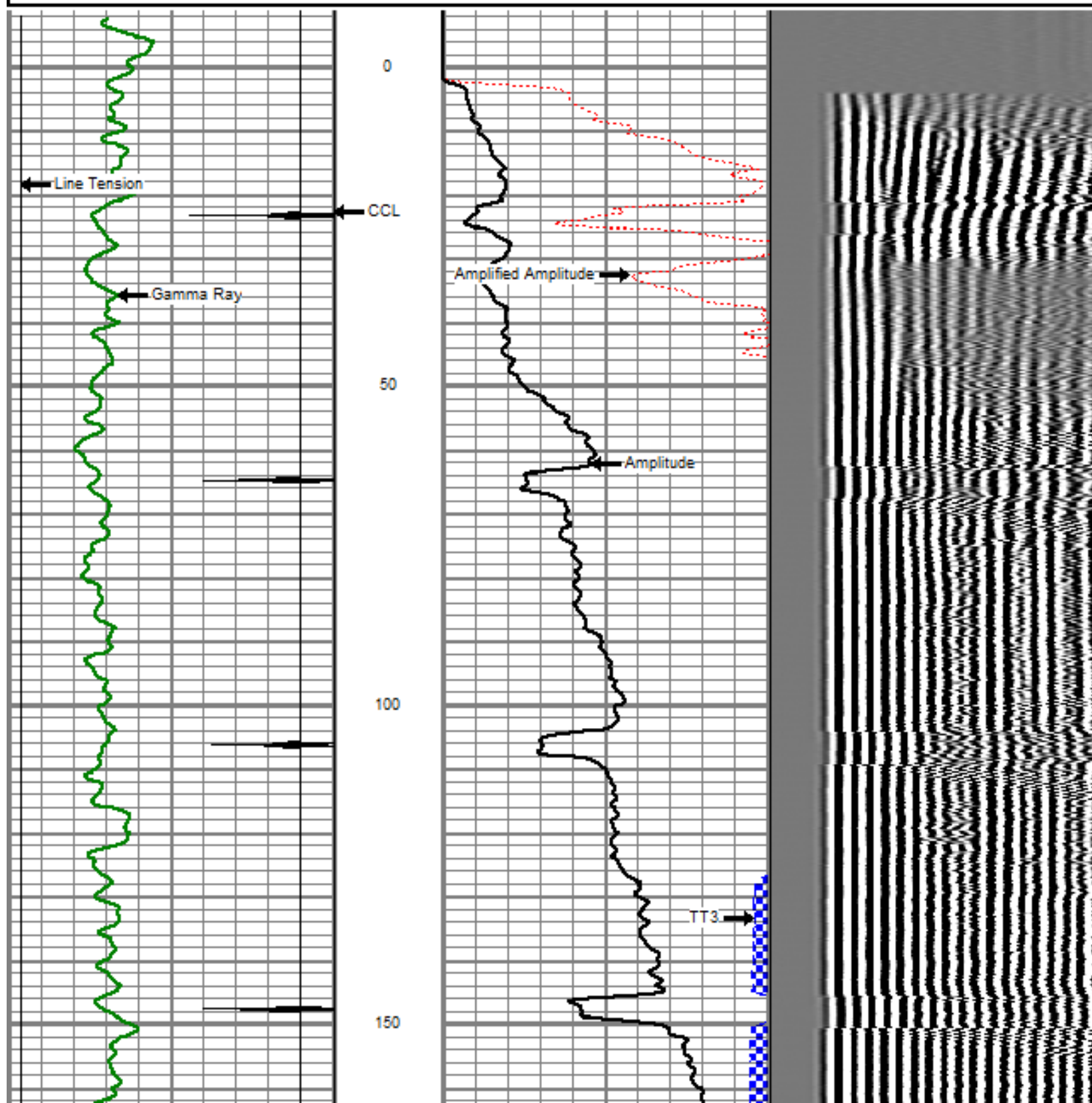


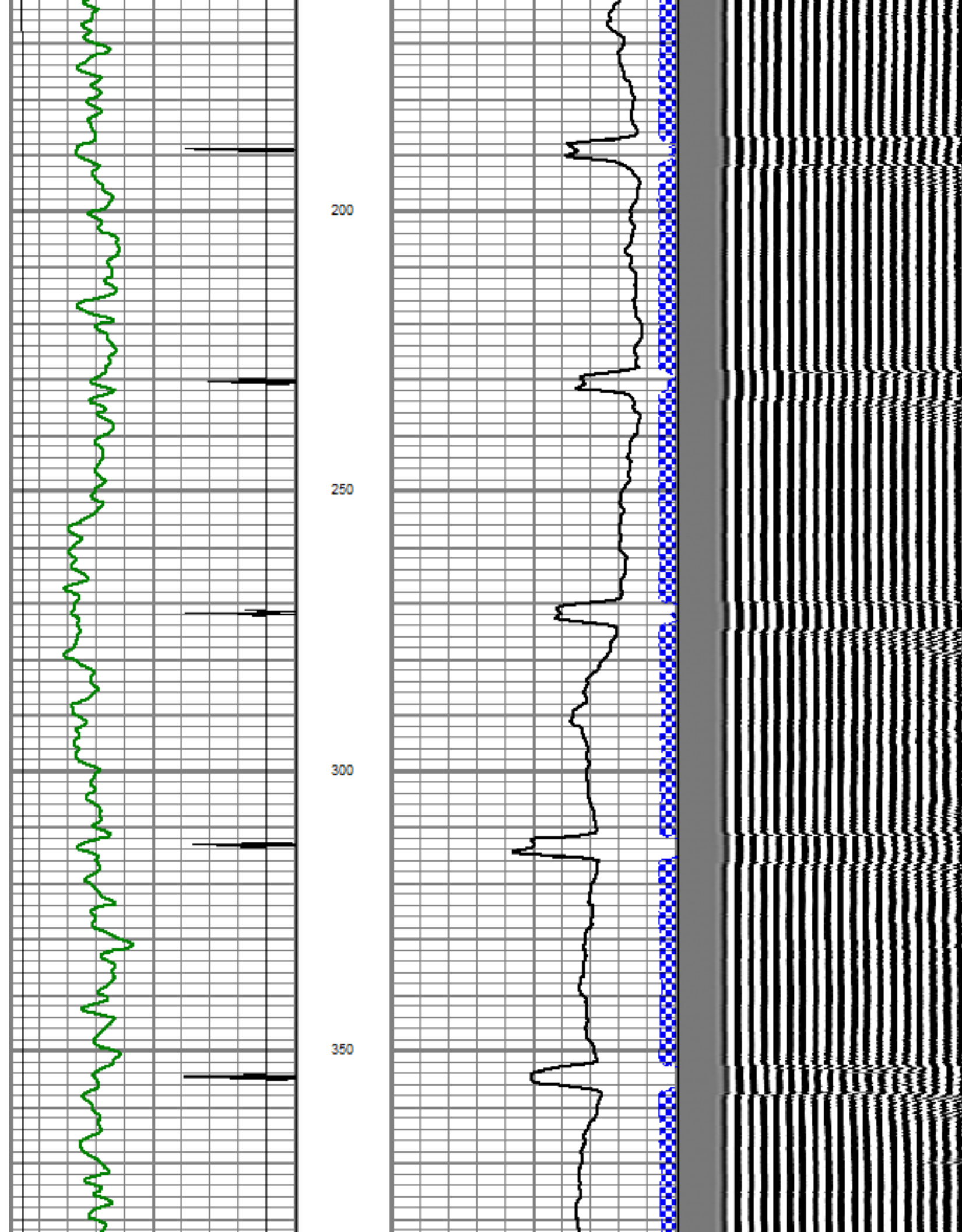
Database File: kennedy 8-4-21 cbl.db  
Dataset Pathname: pass4  
Presentation Format: dobl\_prb  
Dataset Creation: Fri Mar 02 08:25:51 2012 by Log SCH 110722  
Charted by: Depth in Feet scaled 1:240

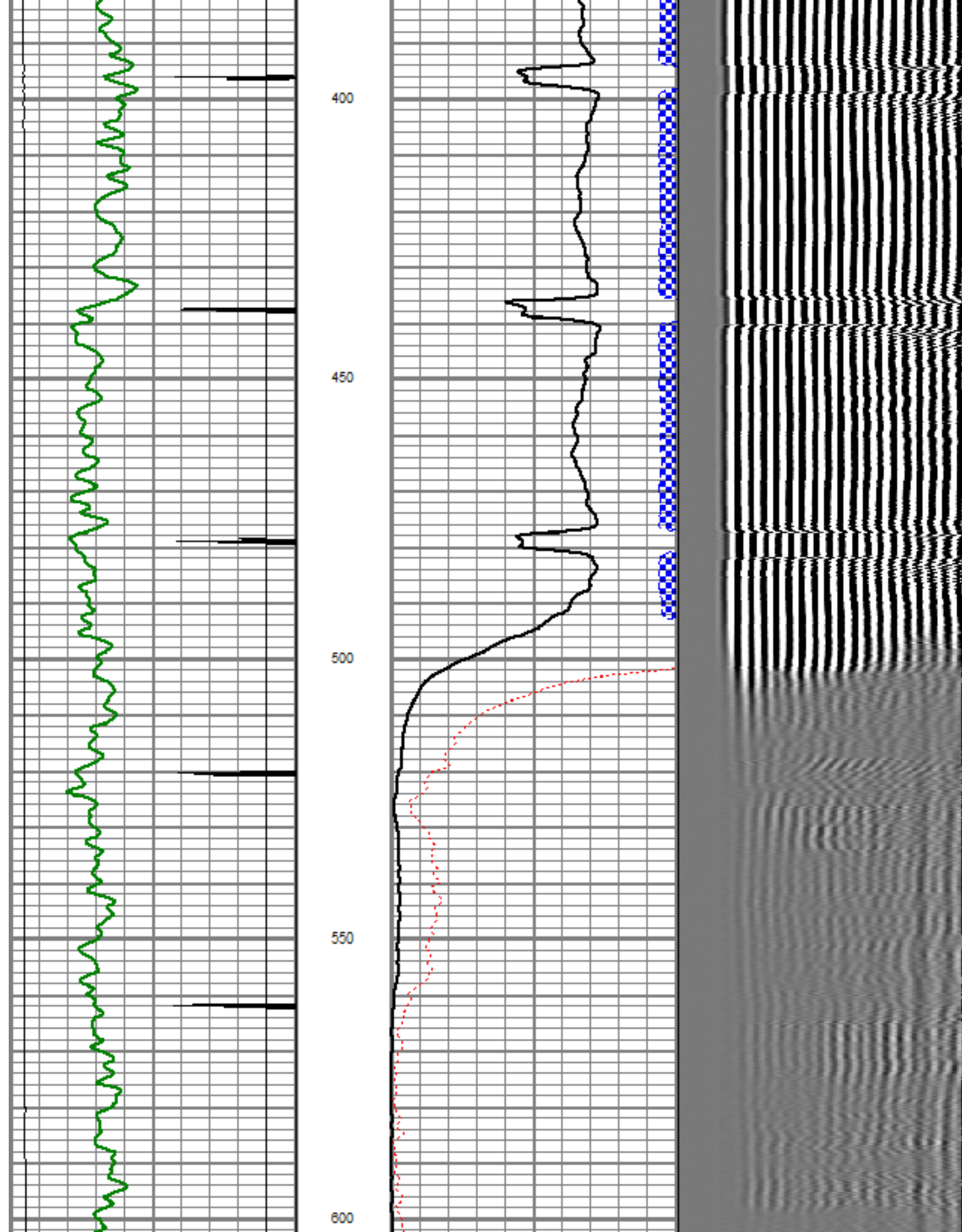
0	Gamma Ray (GAPI)	200
0	LTEN (lb)	5000
9	CCL	-1

0	Amplified Amplitude (mV)	20
0	Amplitude (mV)	100
0	TT3 (usec)	280

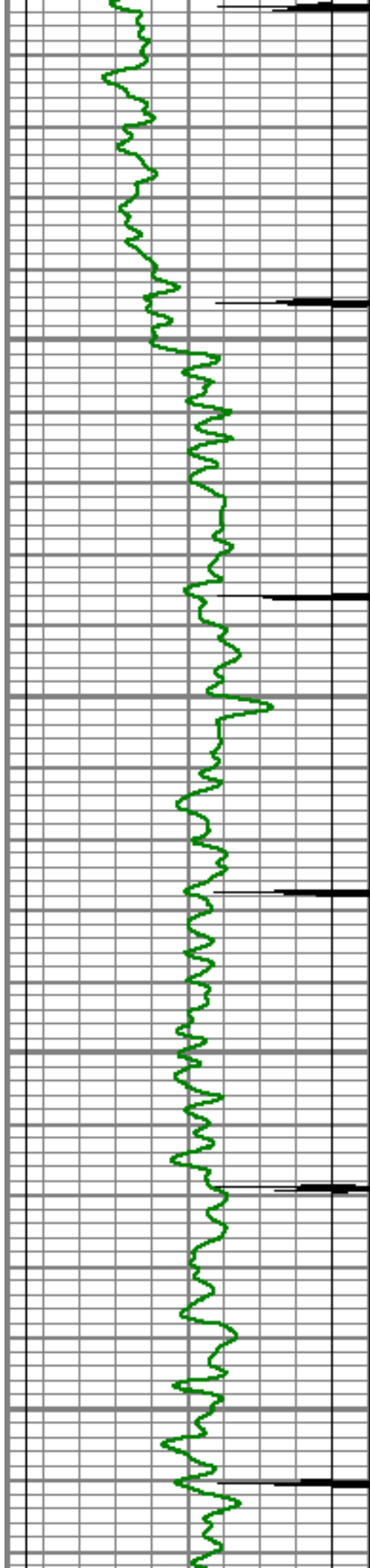
200 Variable Density 1200









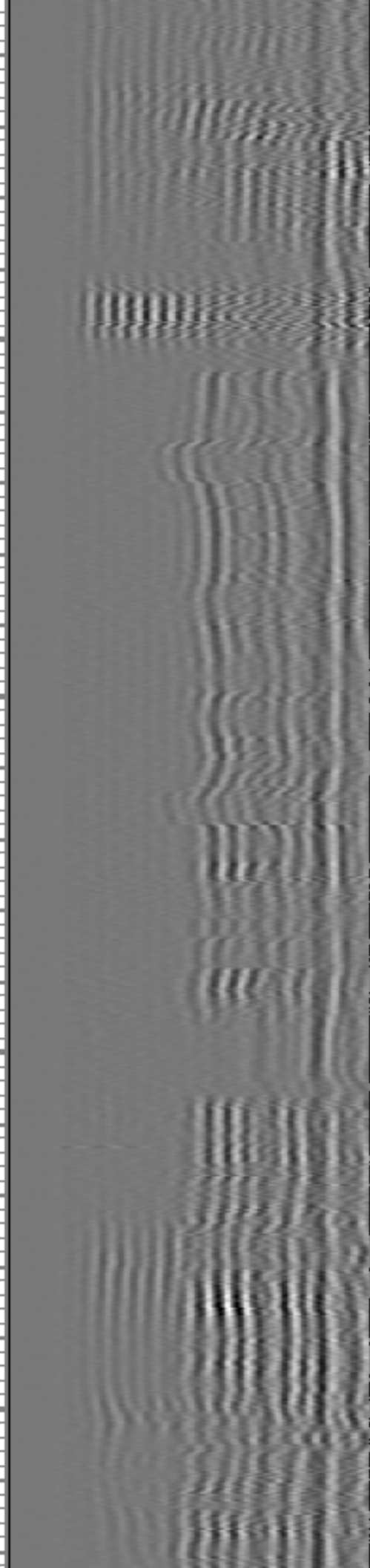


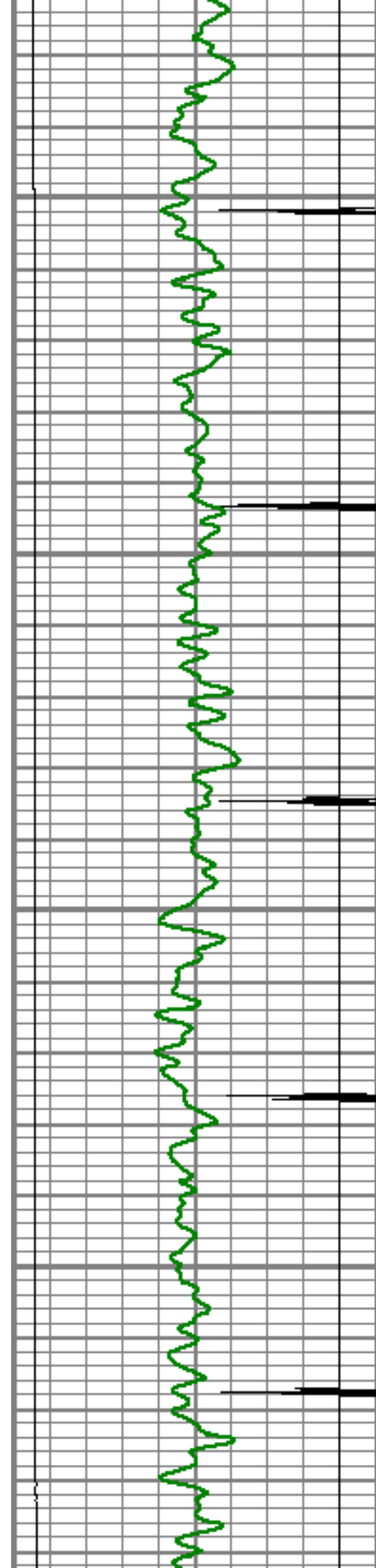
650

700

750

800



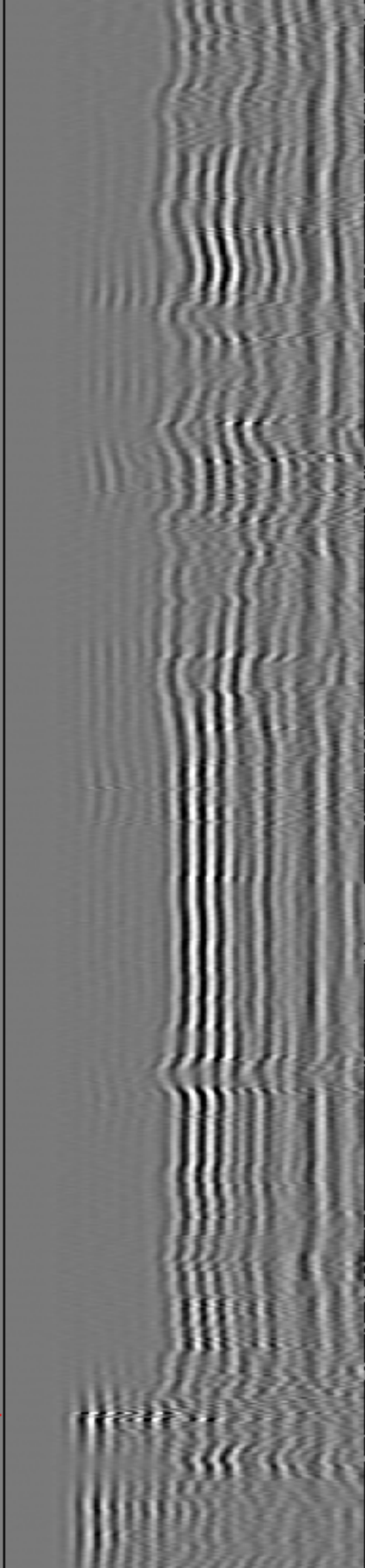
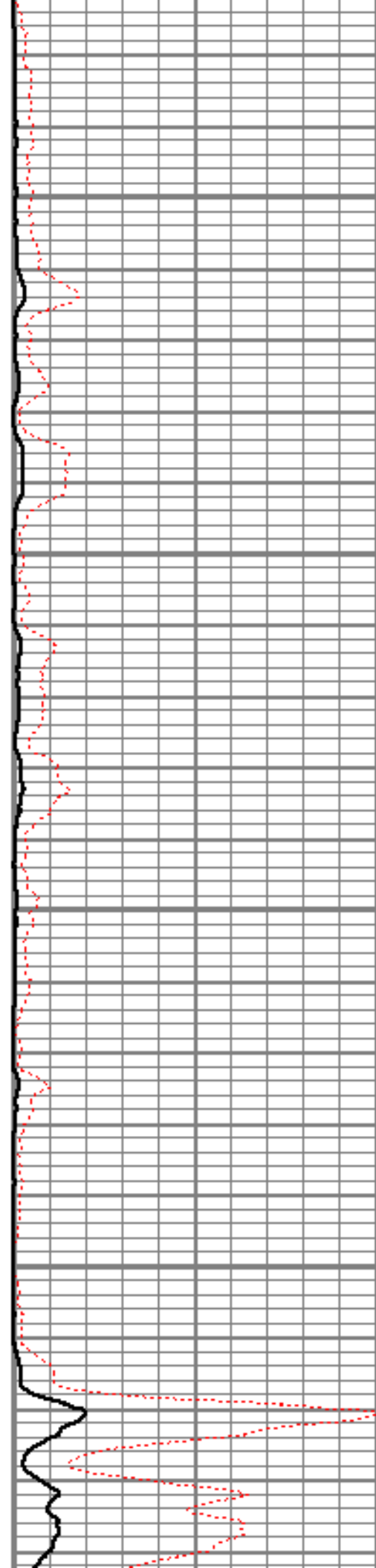


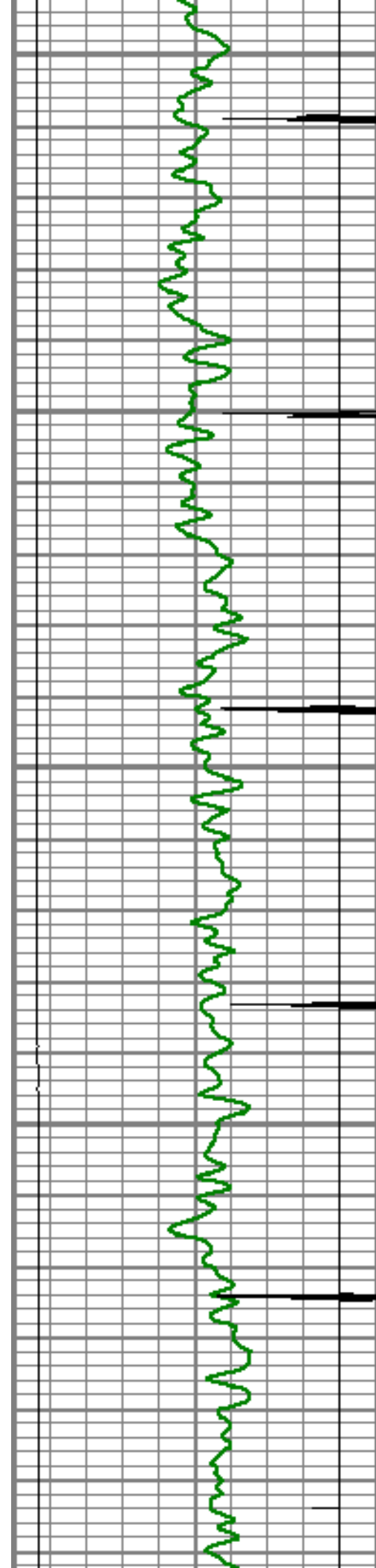
850

900

950

1000





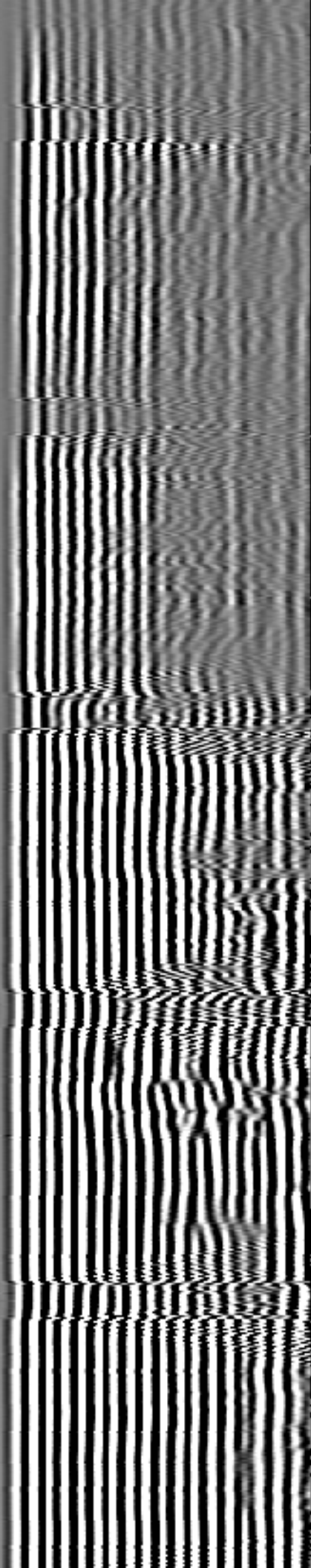
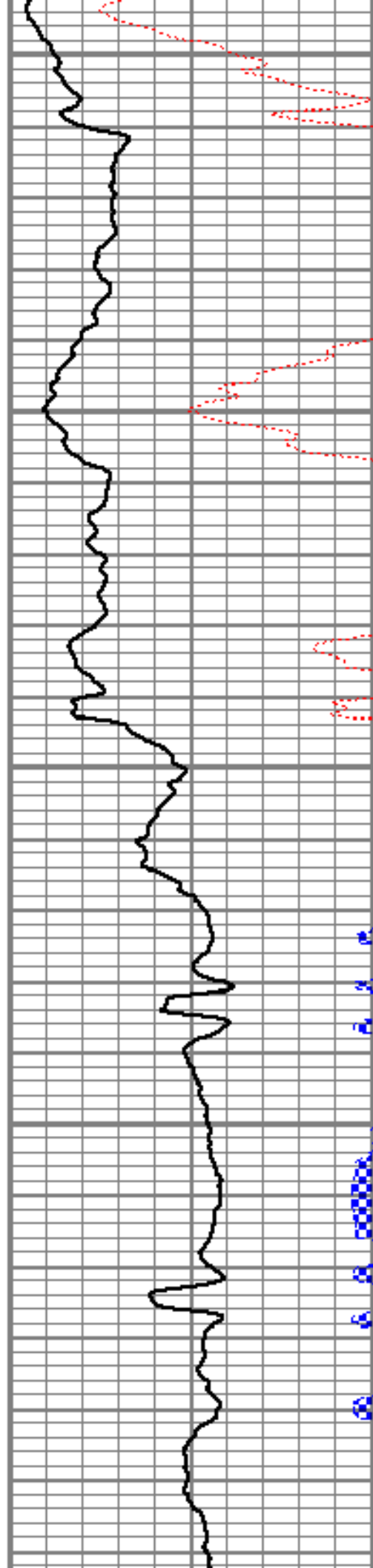
1050

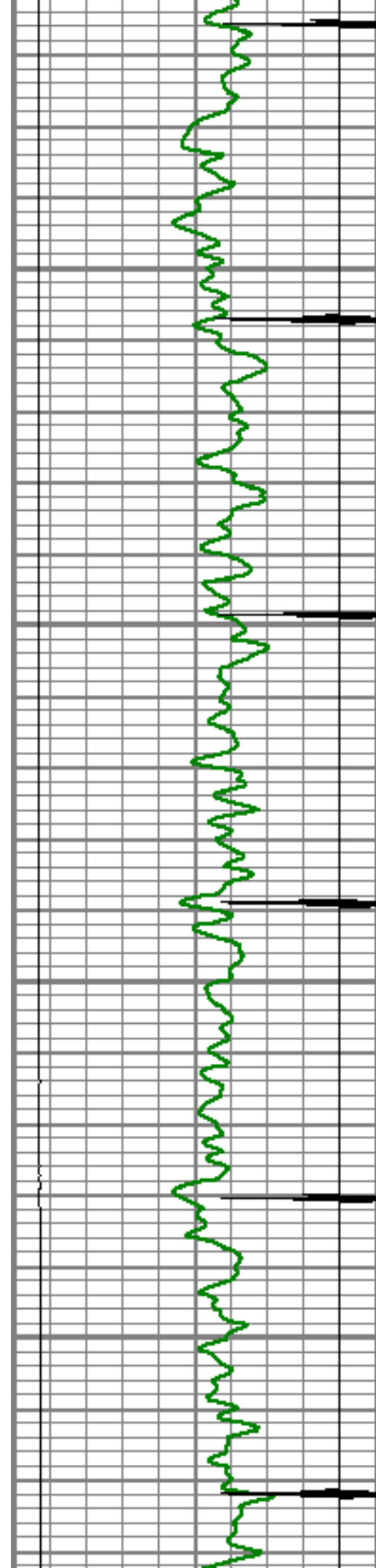
1100

1150

1200

1250



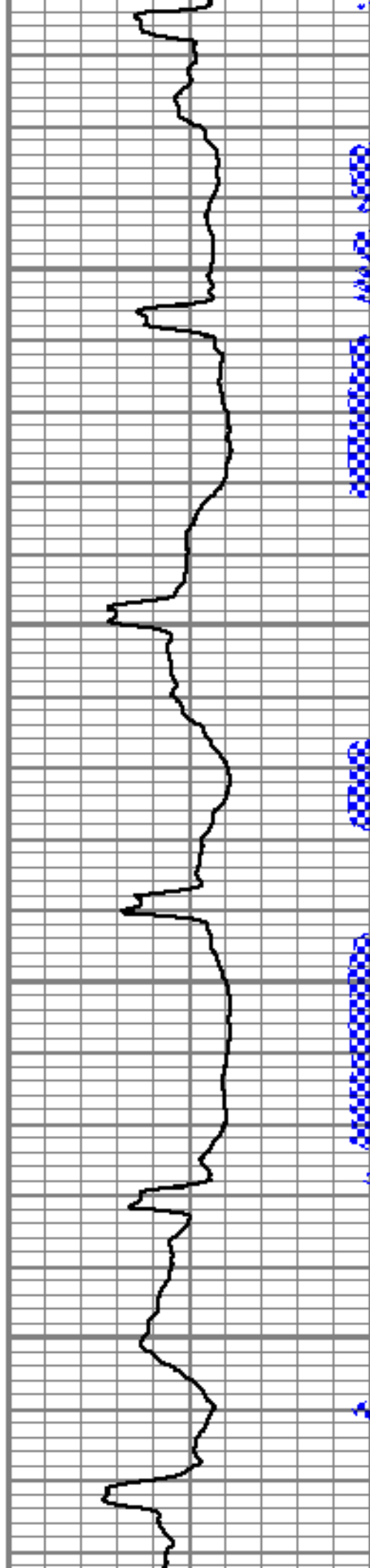


1300

1350

1400

1450

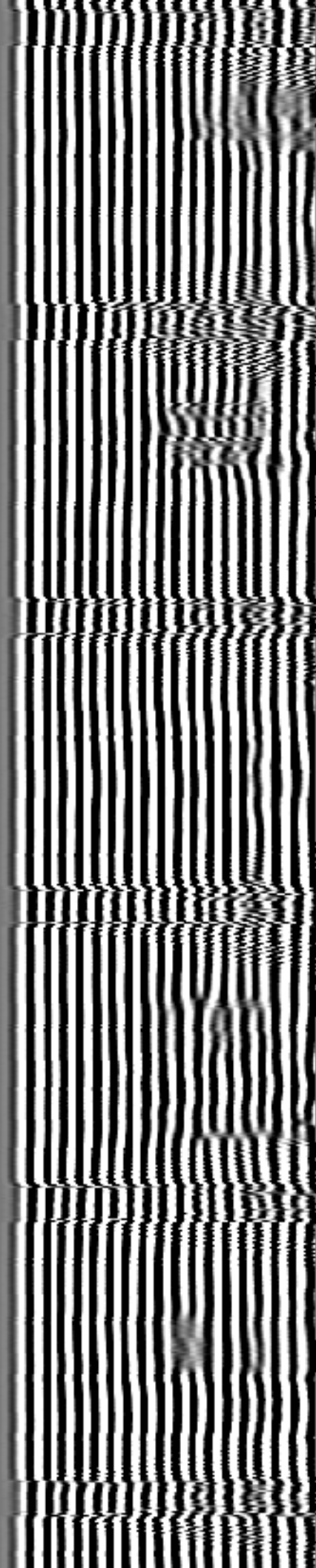


1300

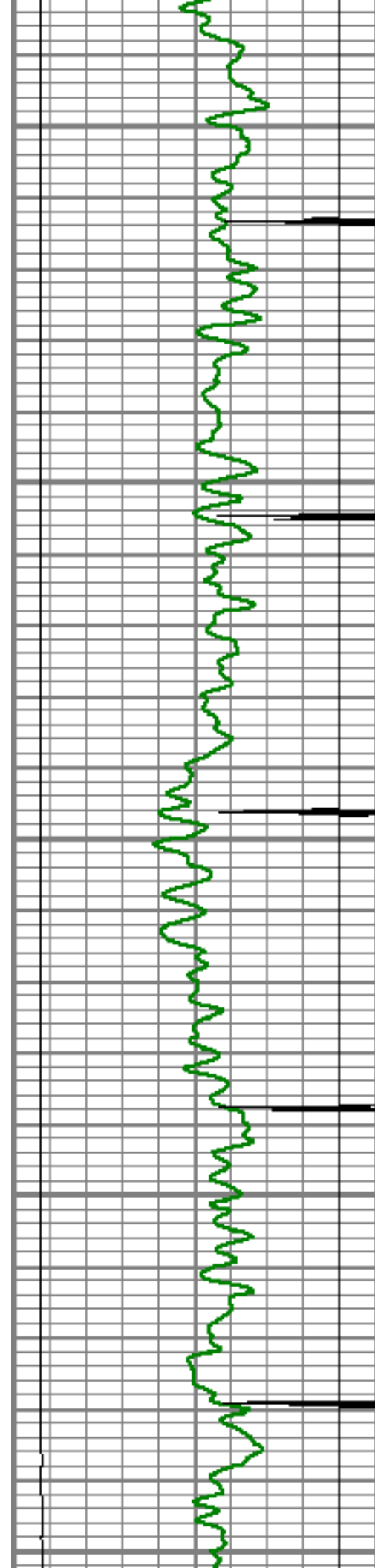
1350

1400

1450







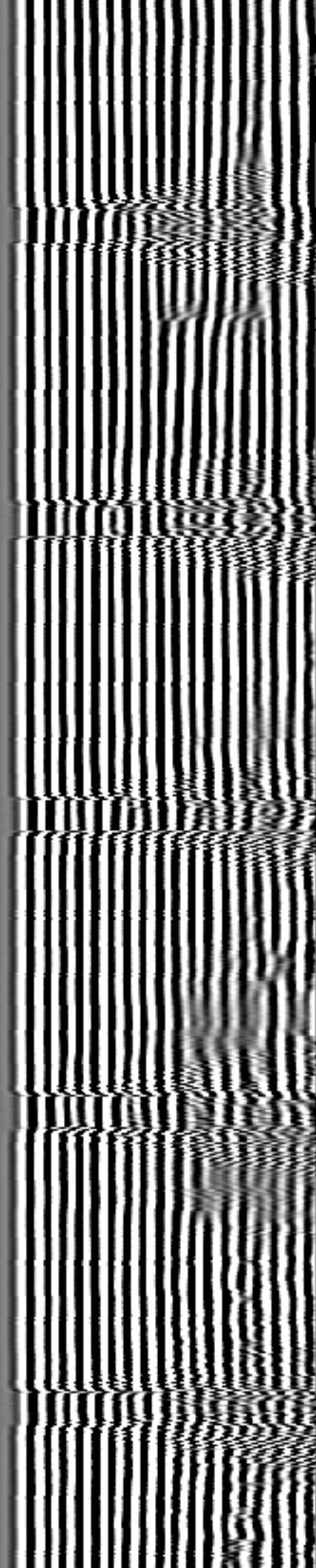
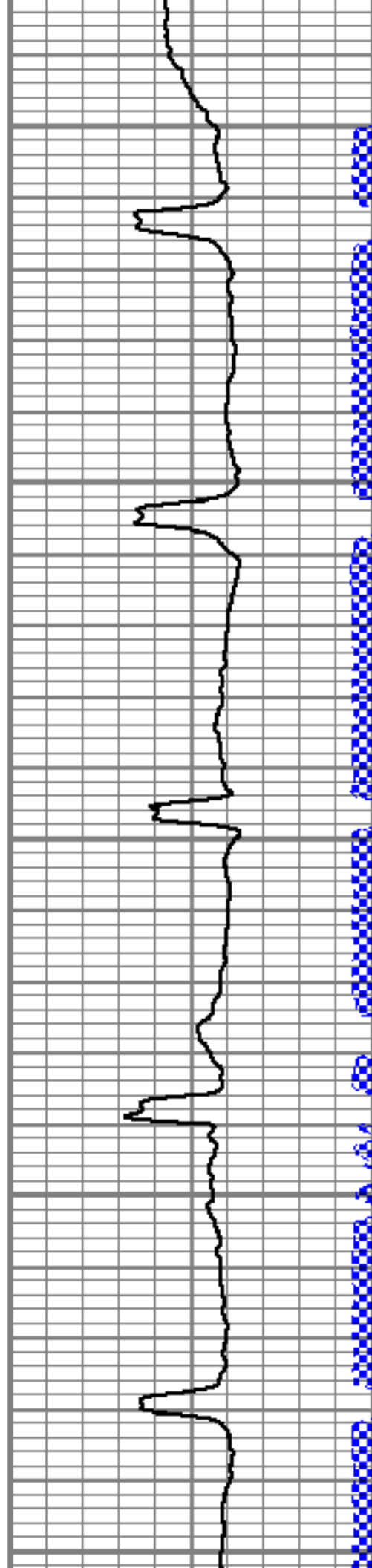
1500

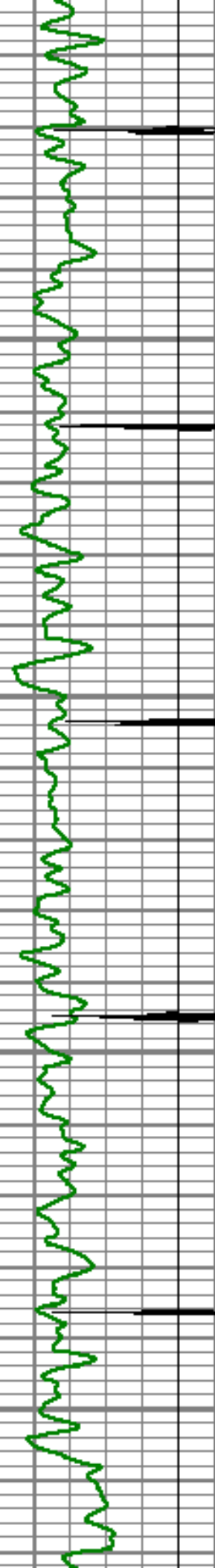
1550

1600

1650

1700



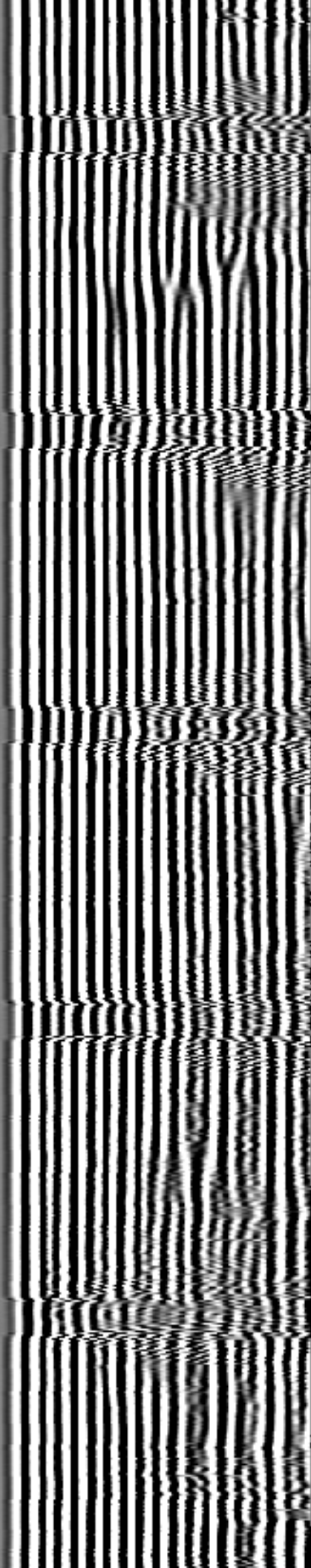
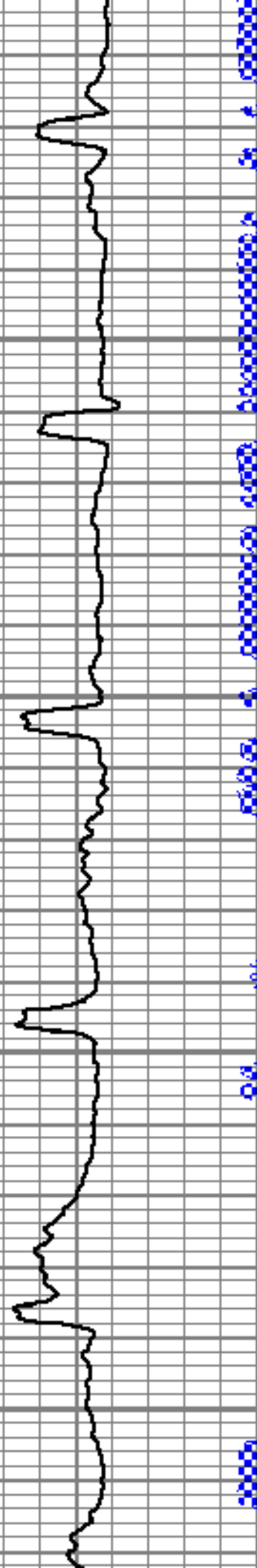


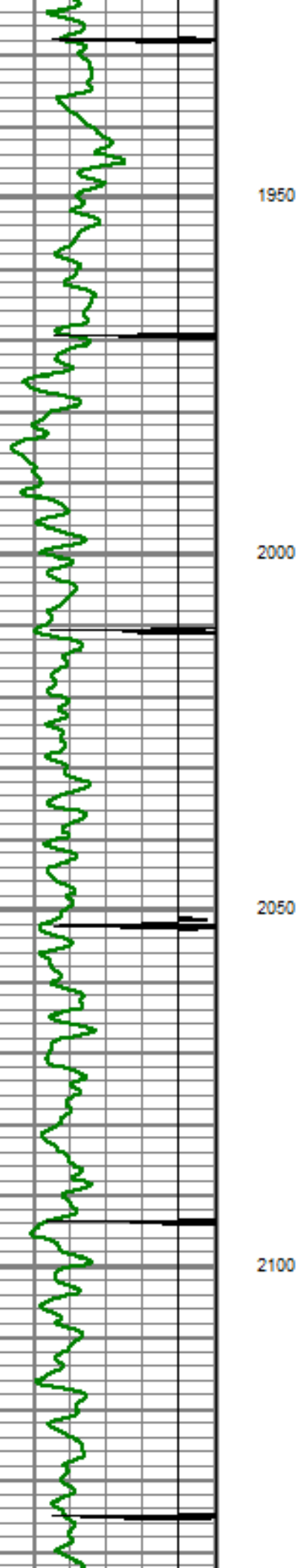
1750

1800

1850

1900



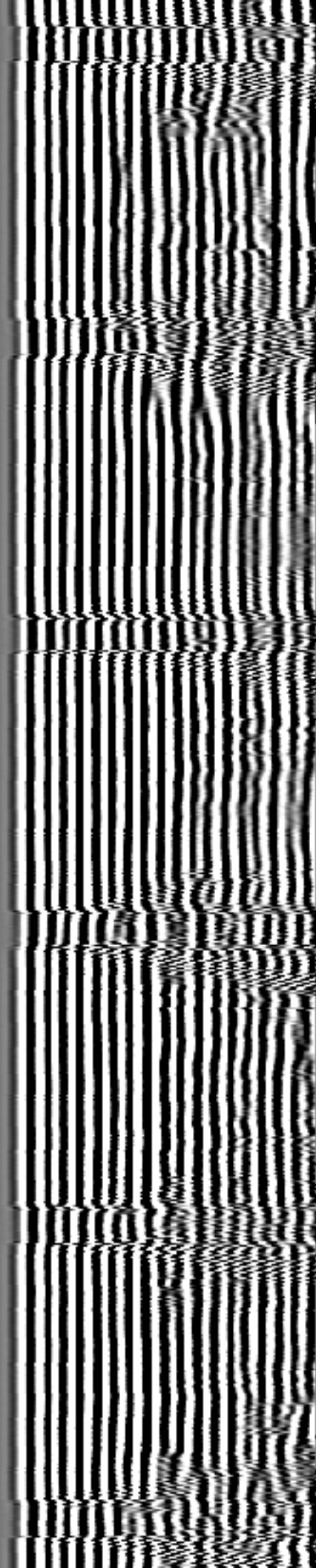
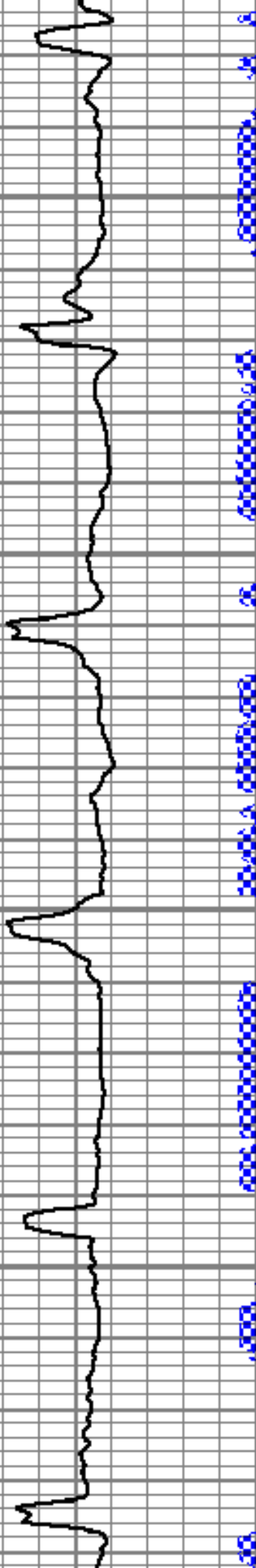


1950

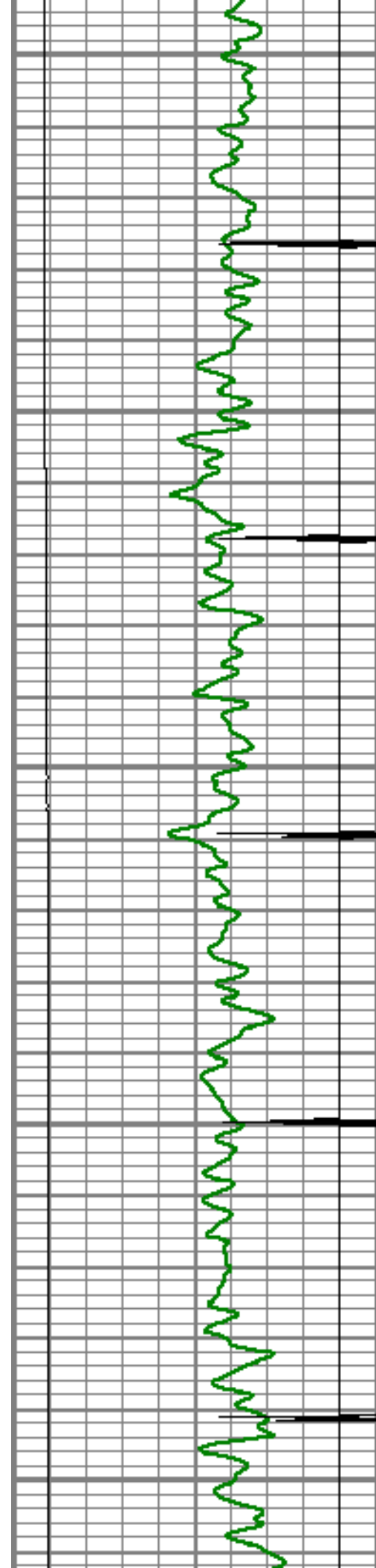
2000

2050

2100







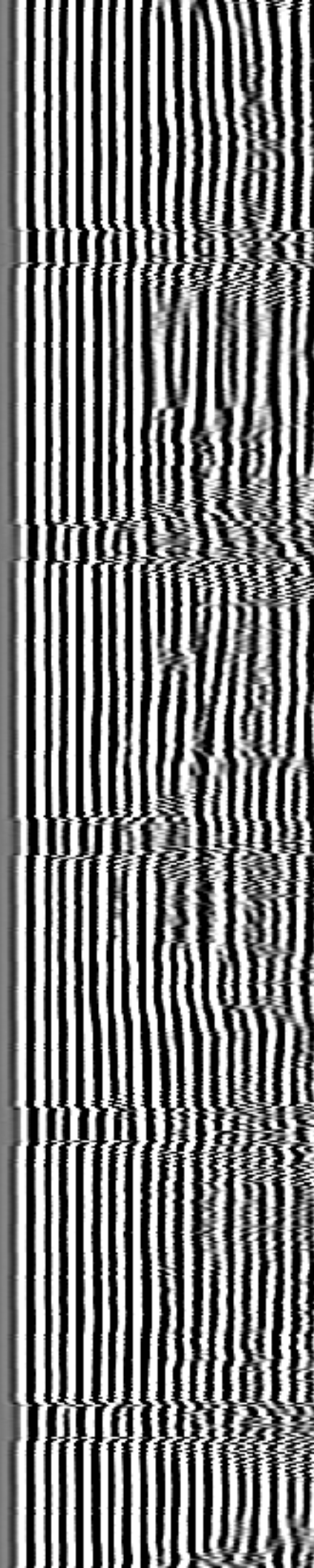
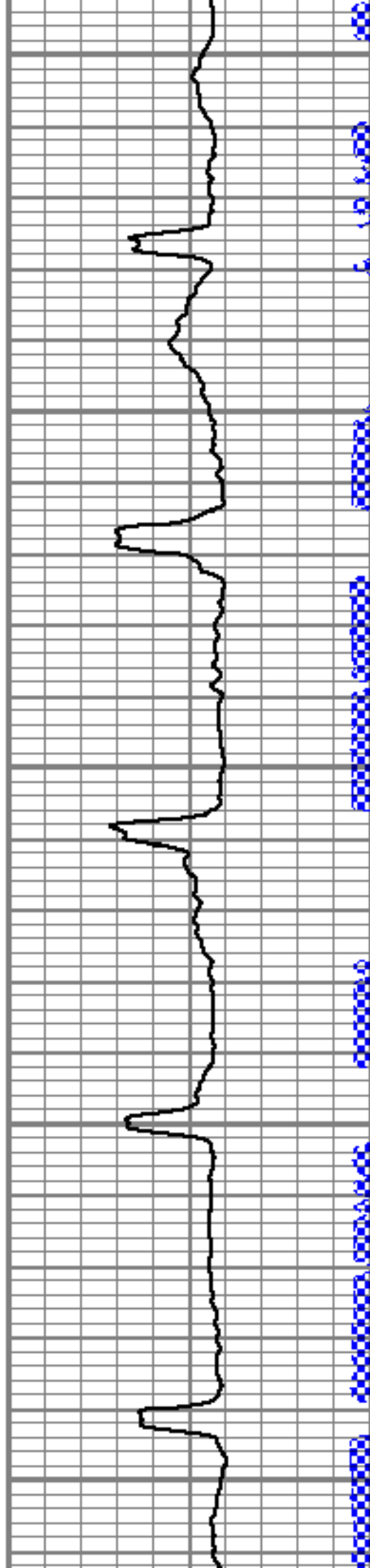
2150

2200

2250

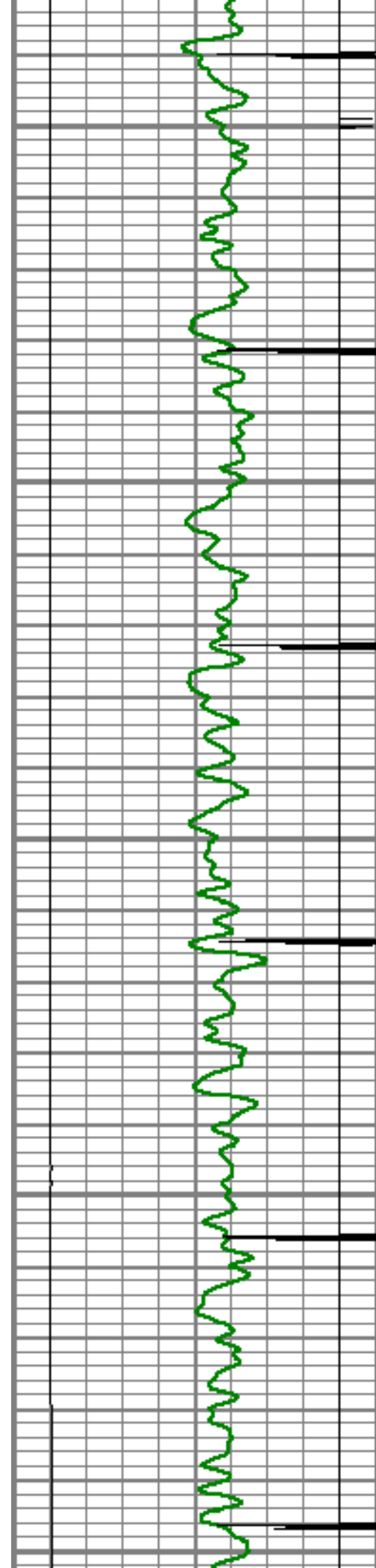
2300

2350









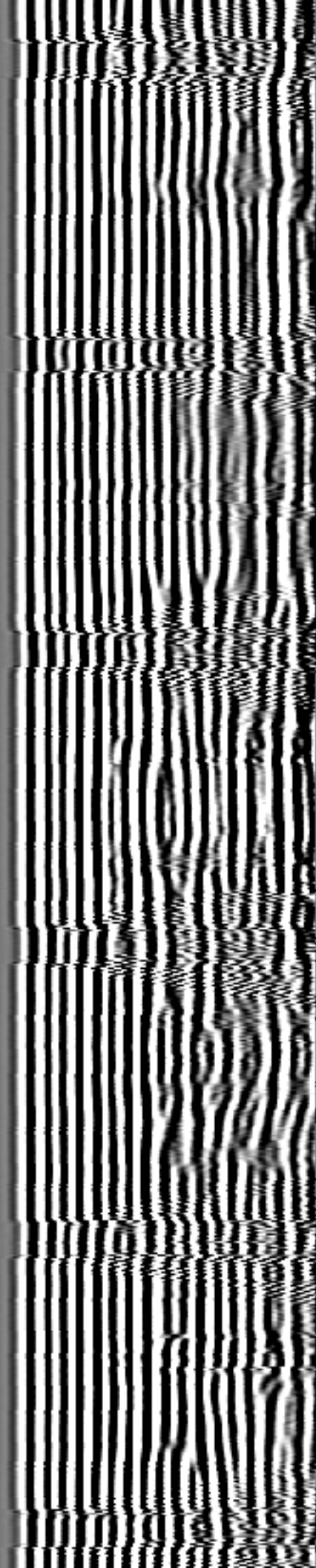
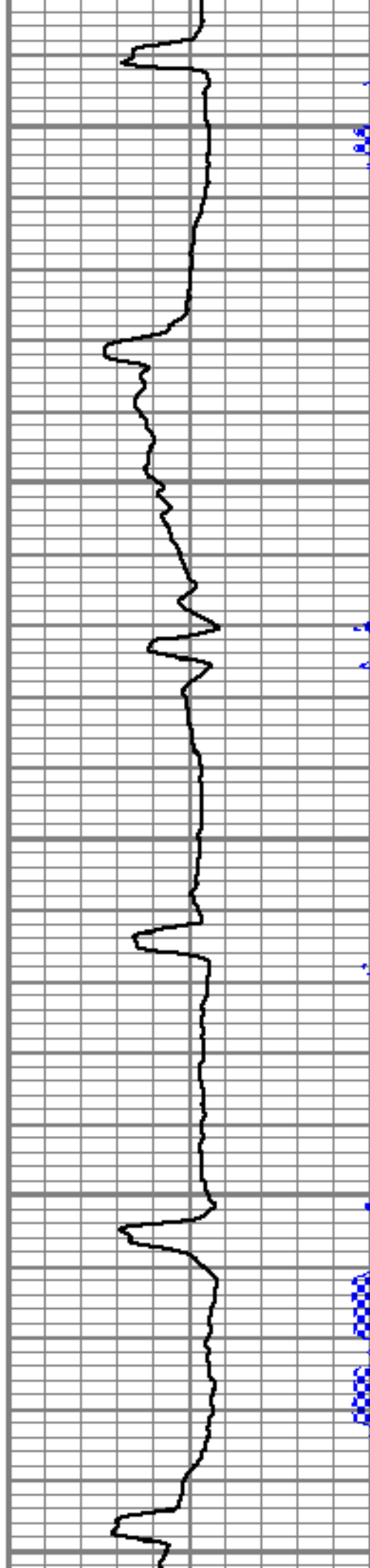
2600

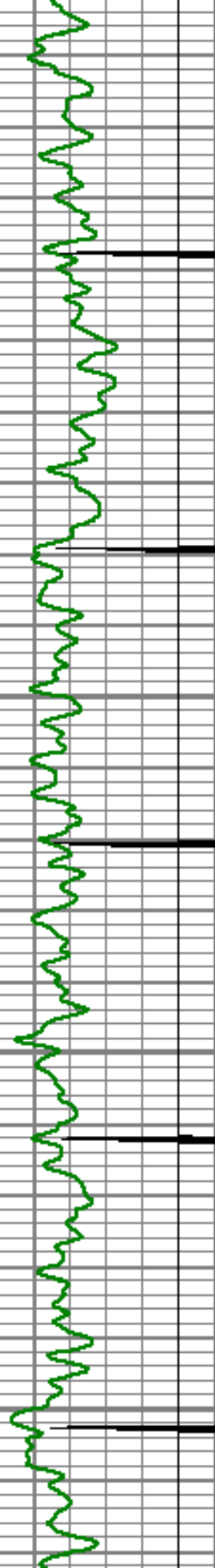
2650

2700

2750

2800



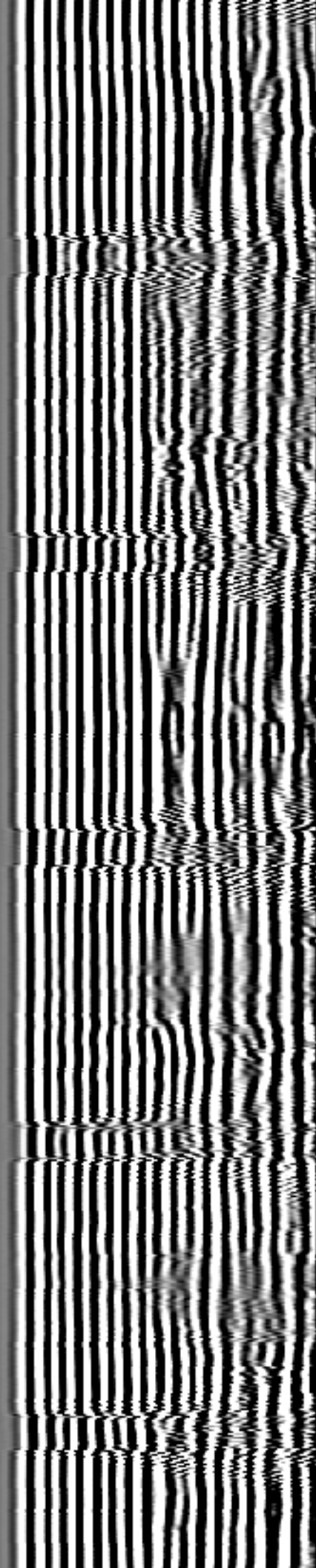
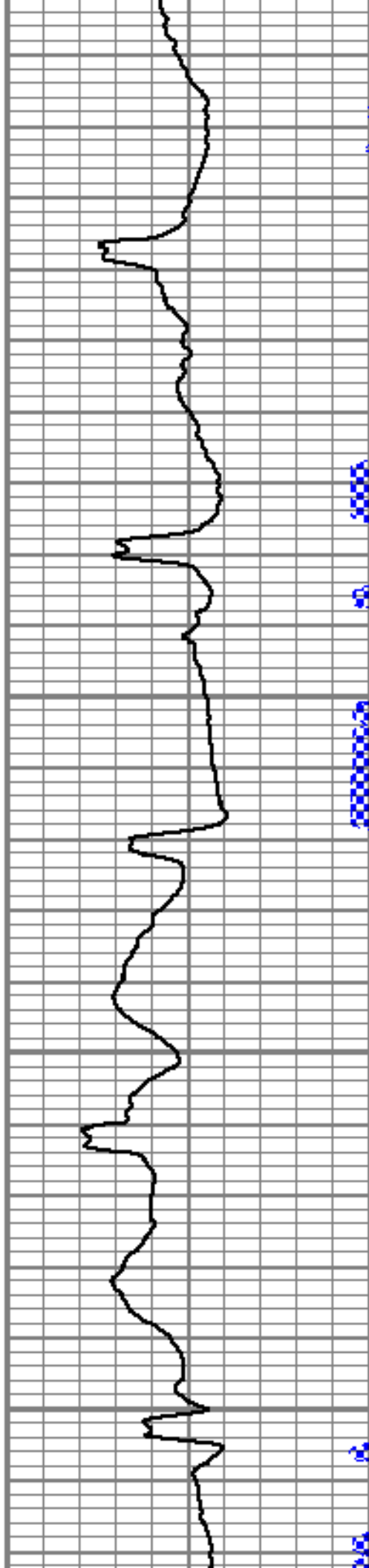


2850

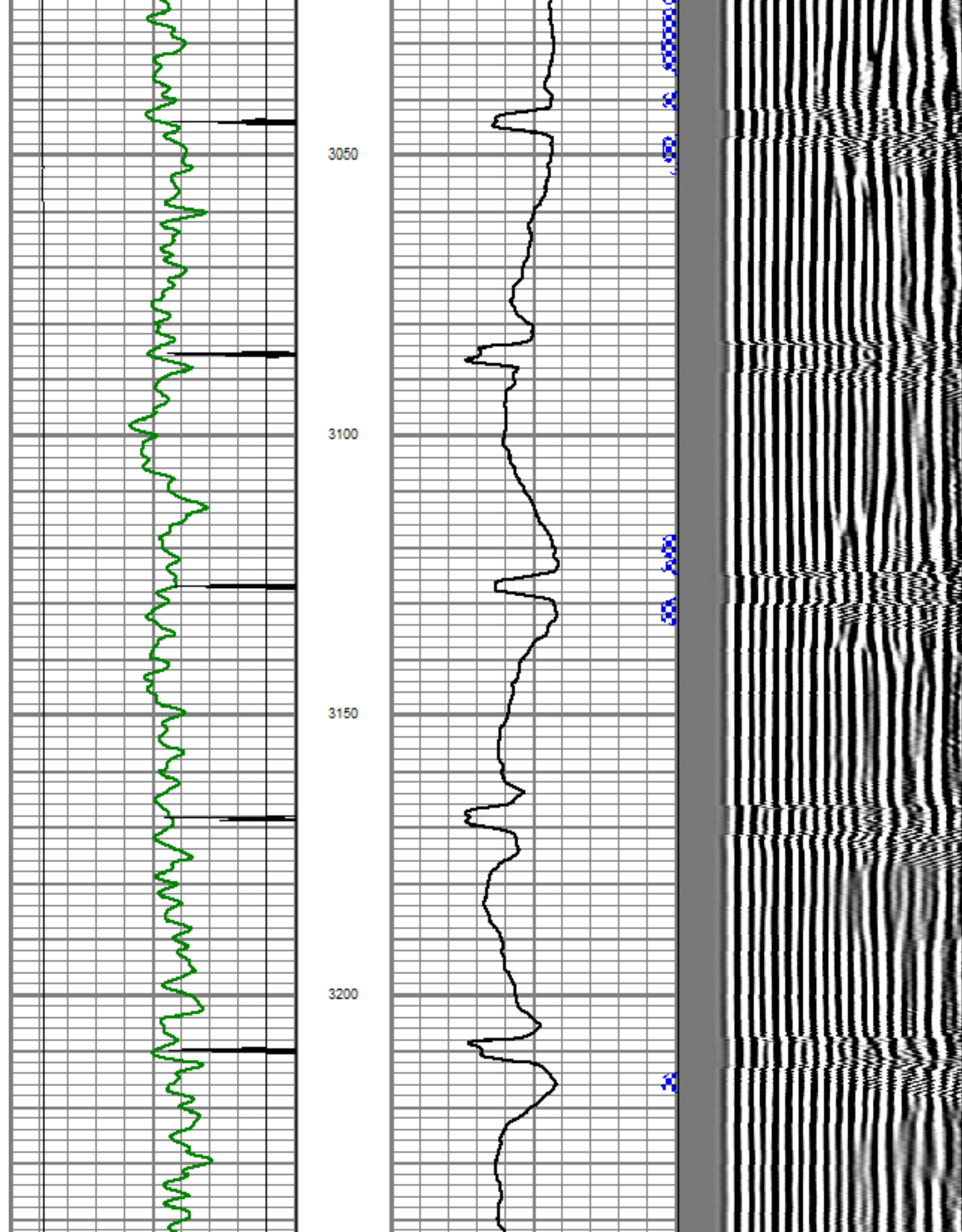
2900

2950

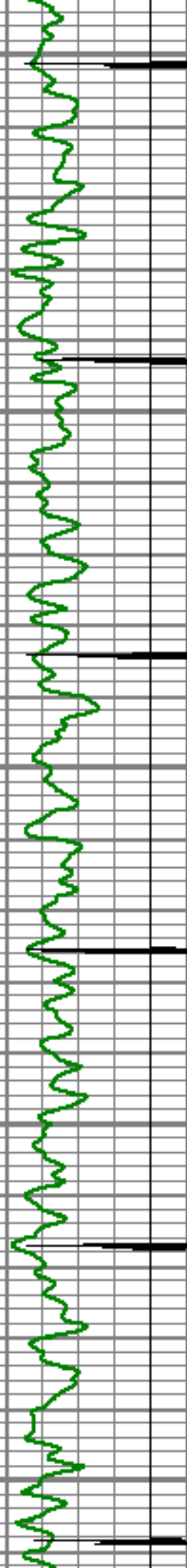
3000











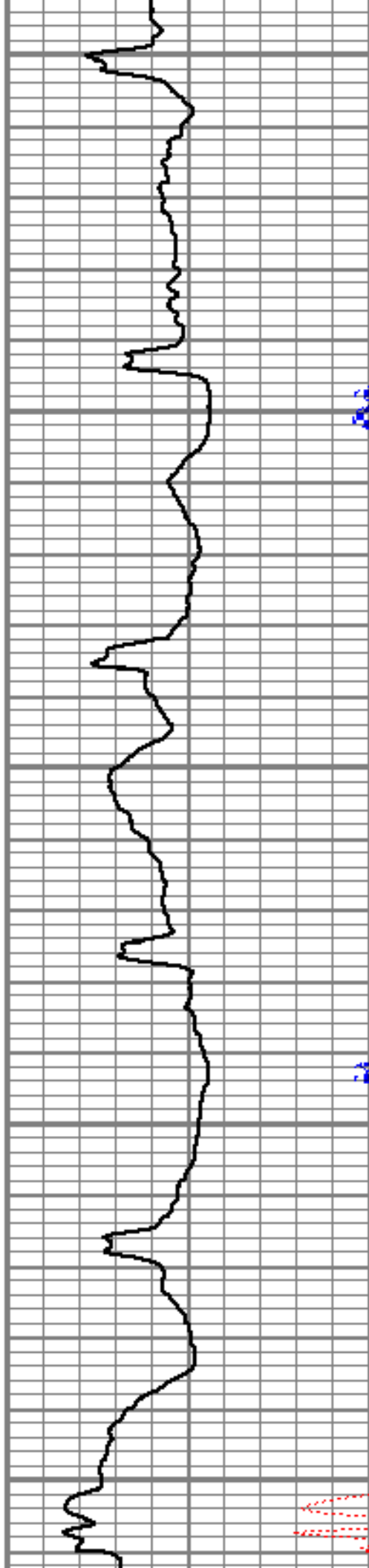
3250

3300

3350

3400

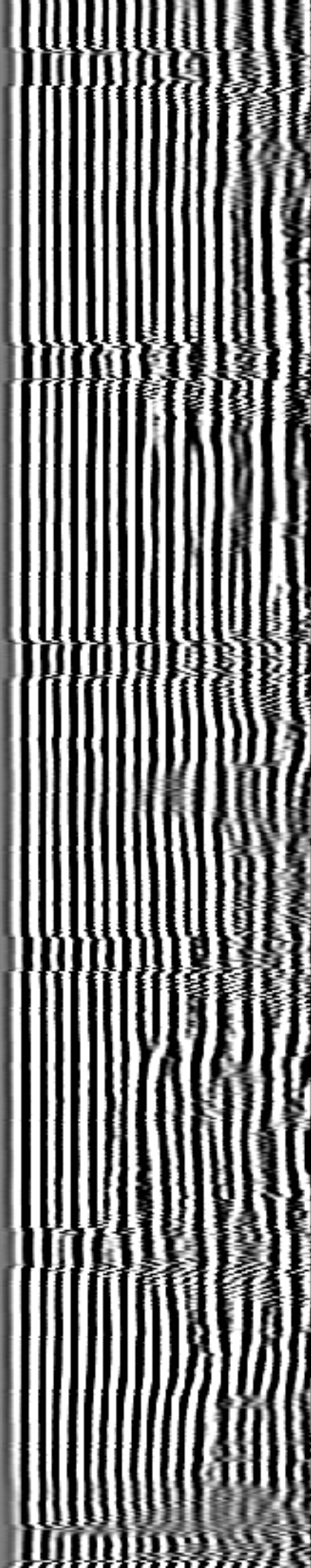
3450

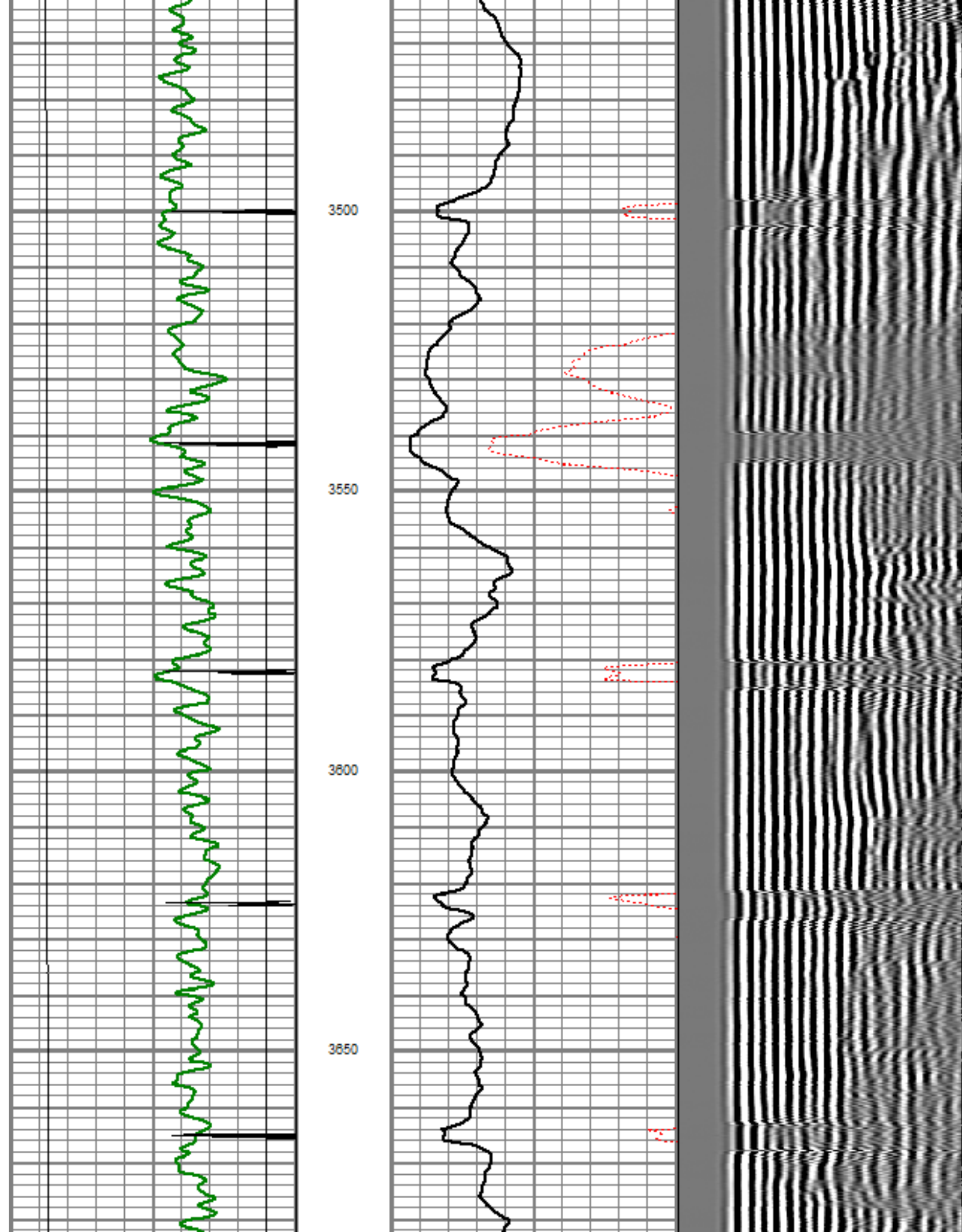


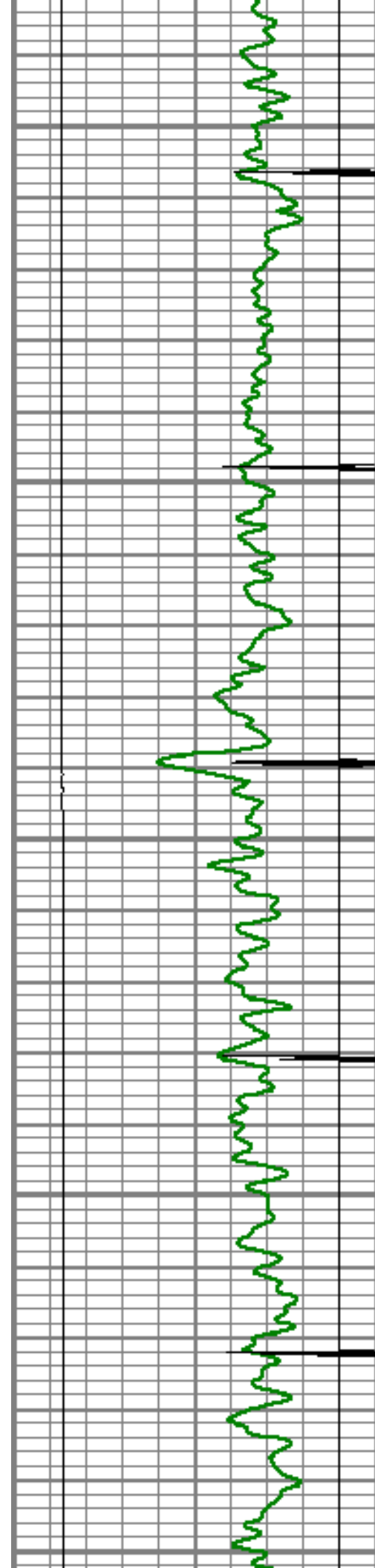
3300

3400

3450







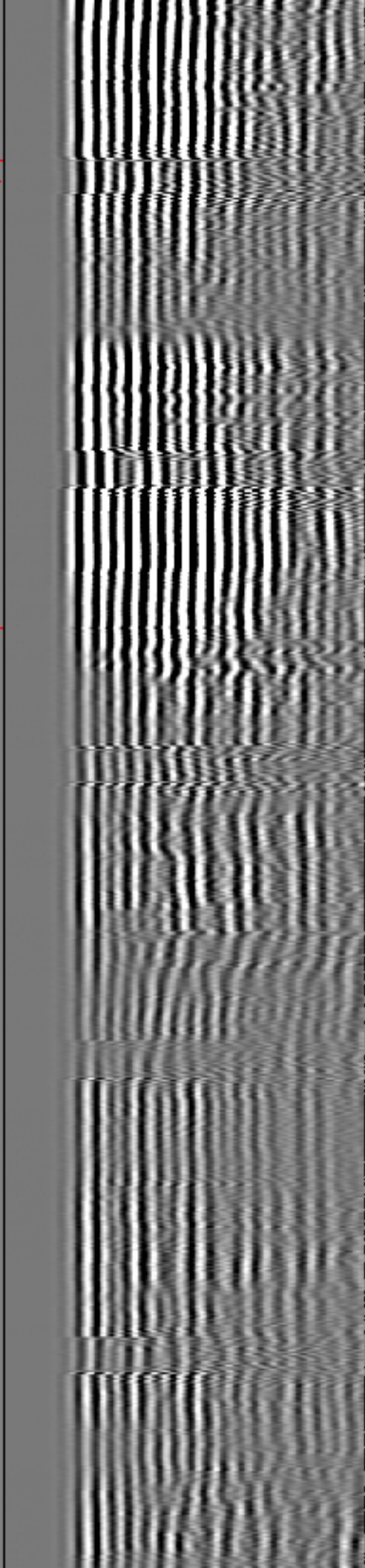
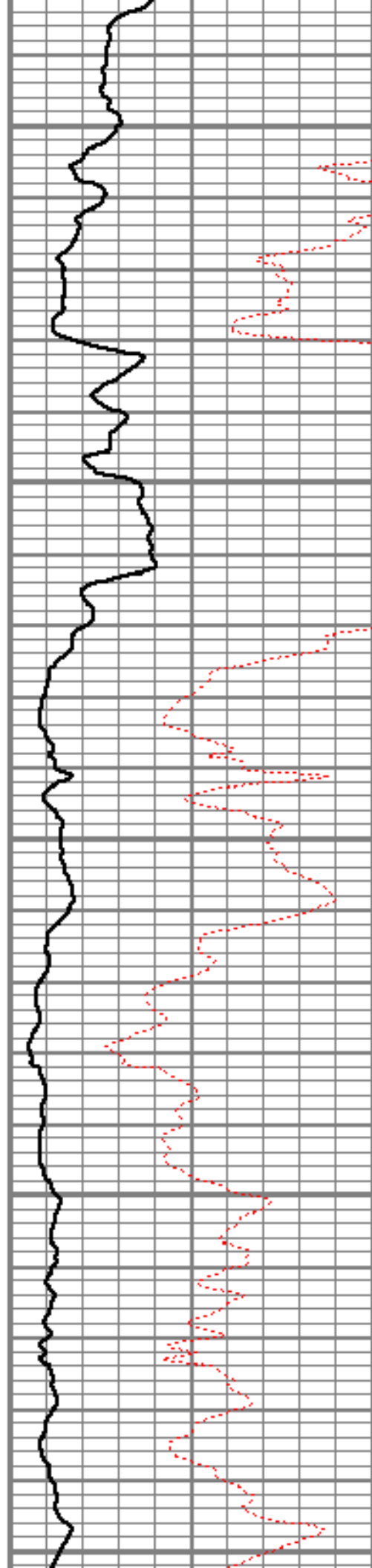
3700

3750

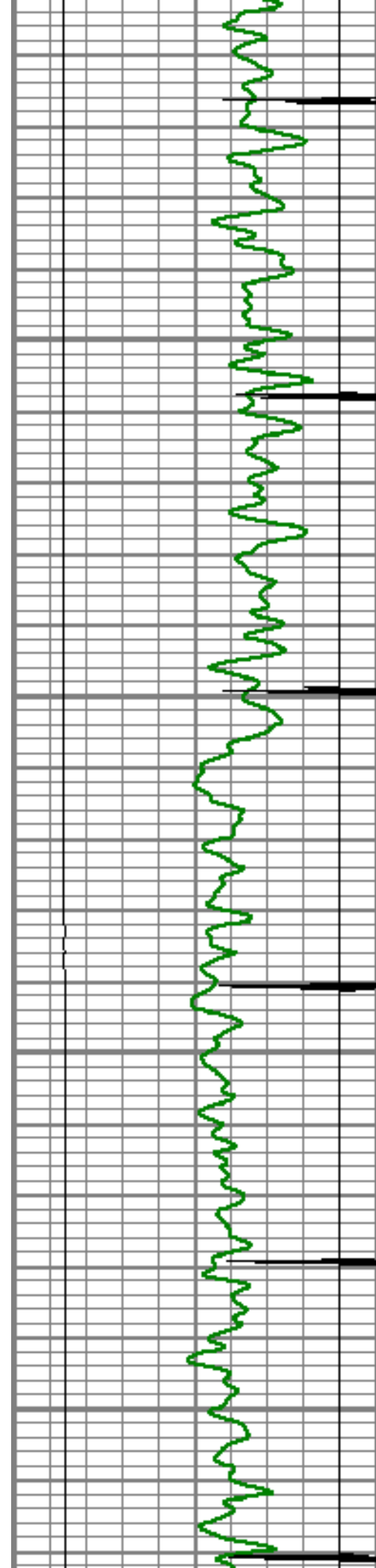
3800

3850

3900





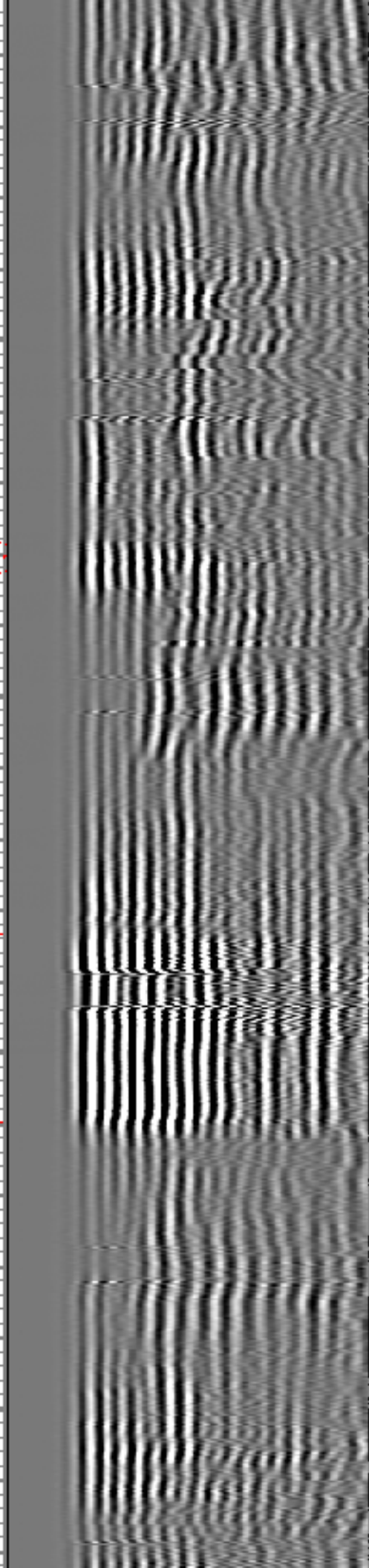
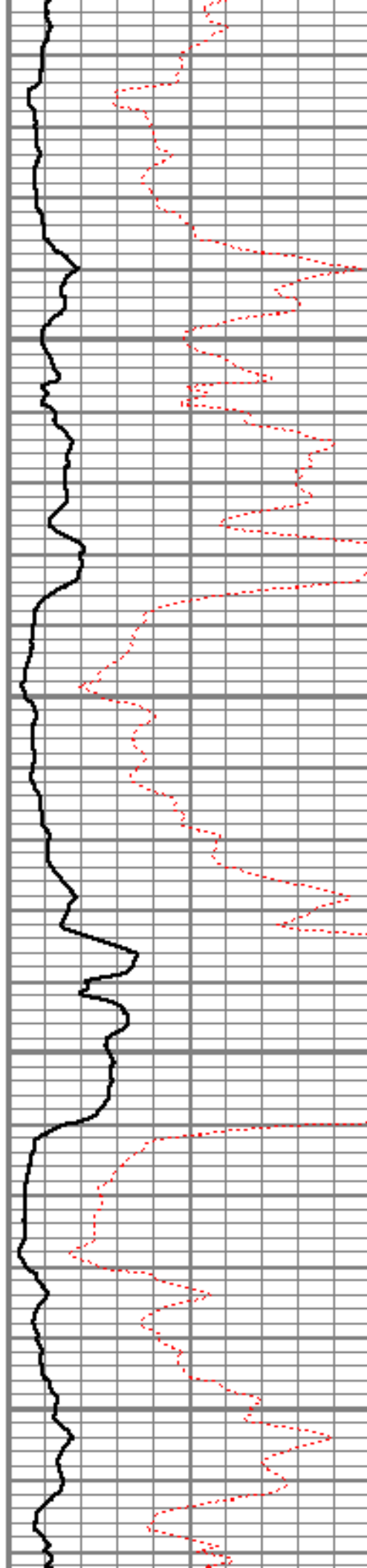


3950

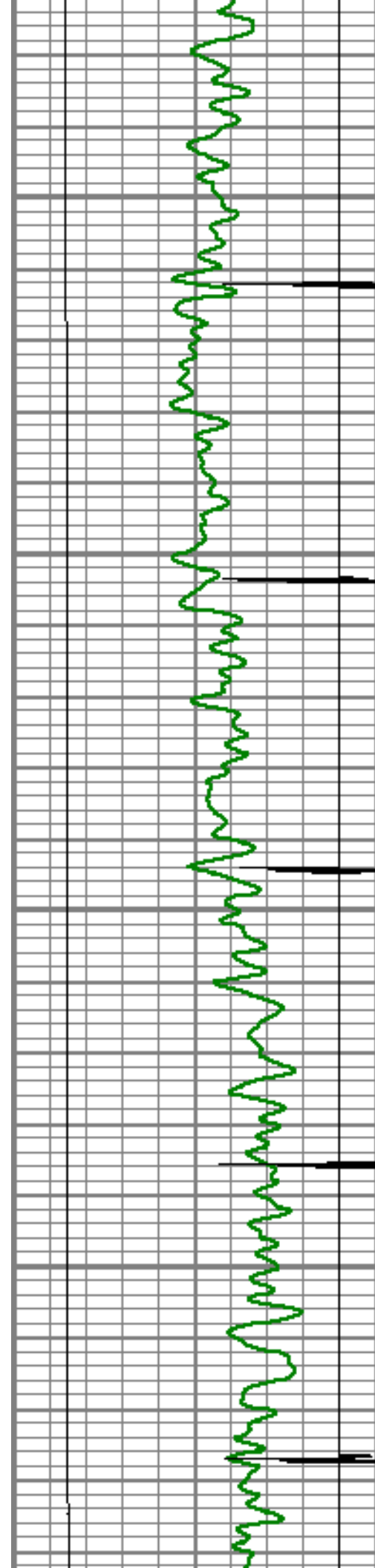
4000

4050

4100





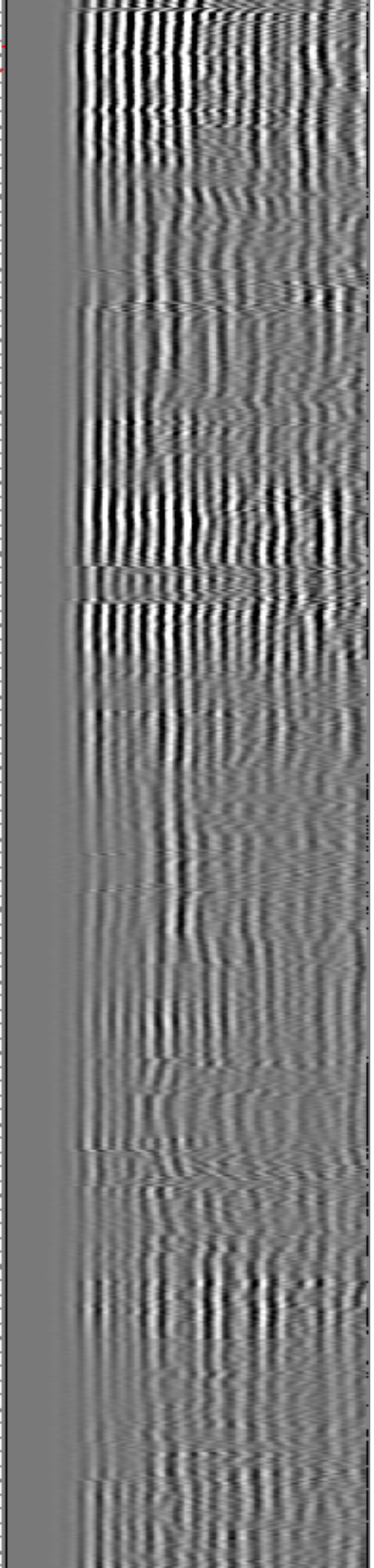
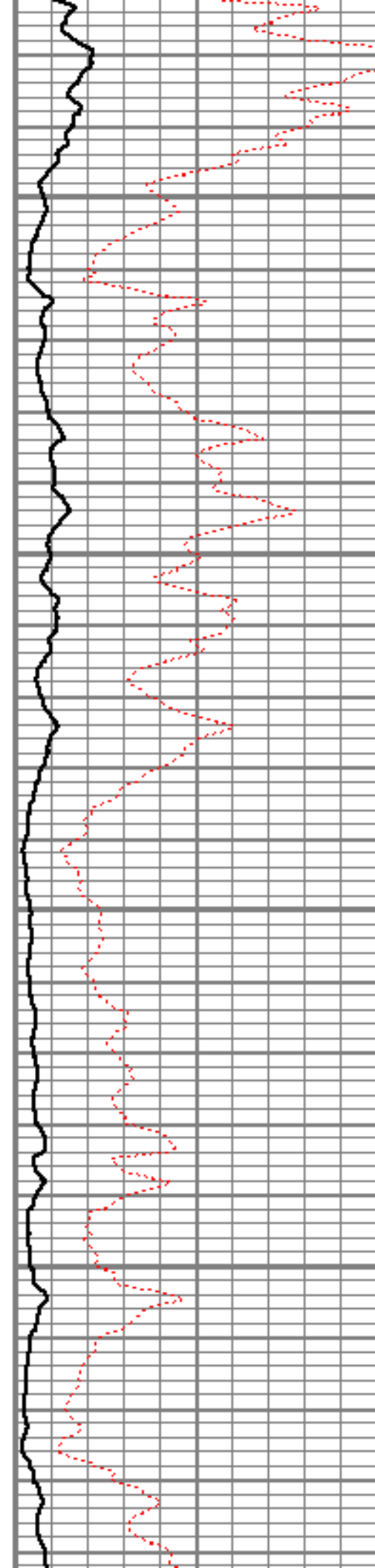


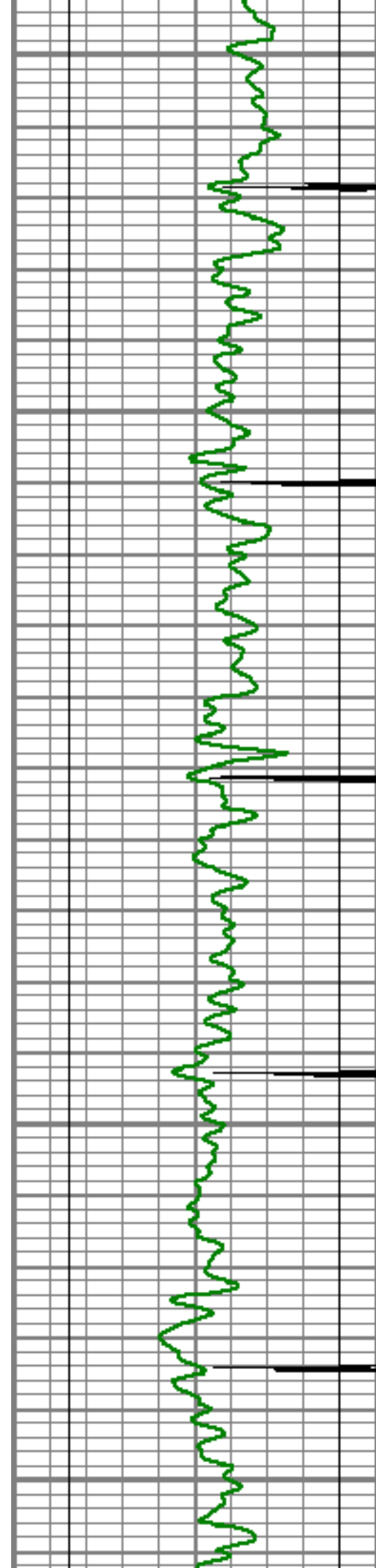
4150

4200

4250

4300





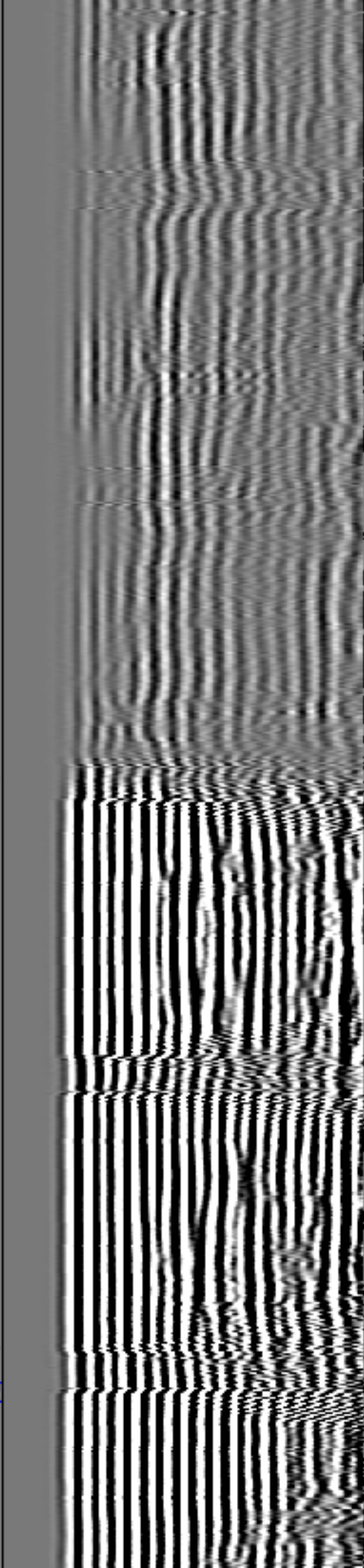
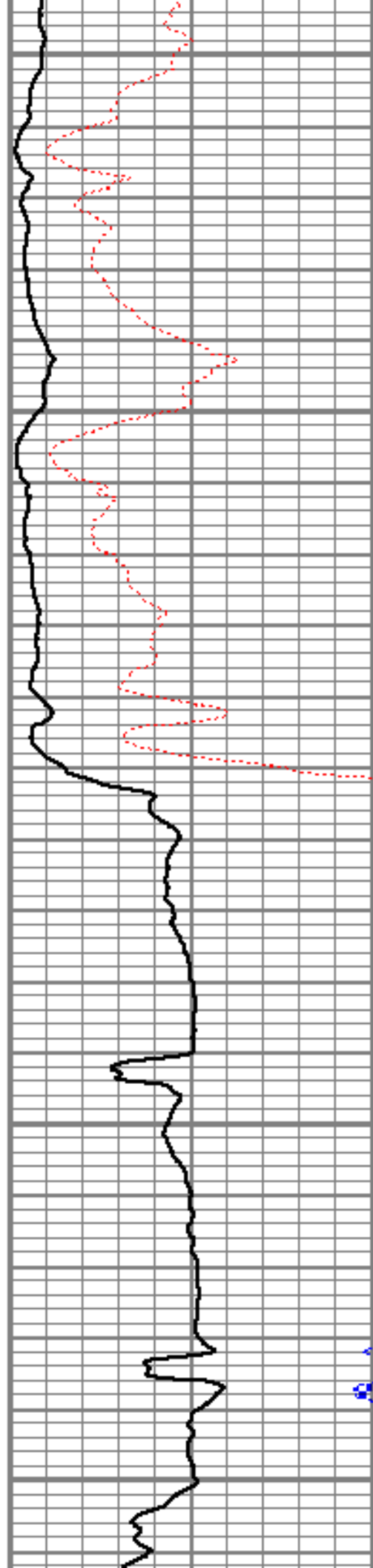
4350

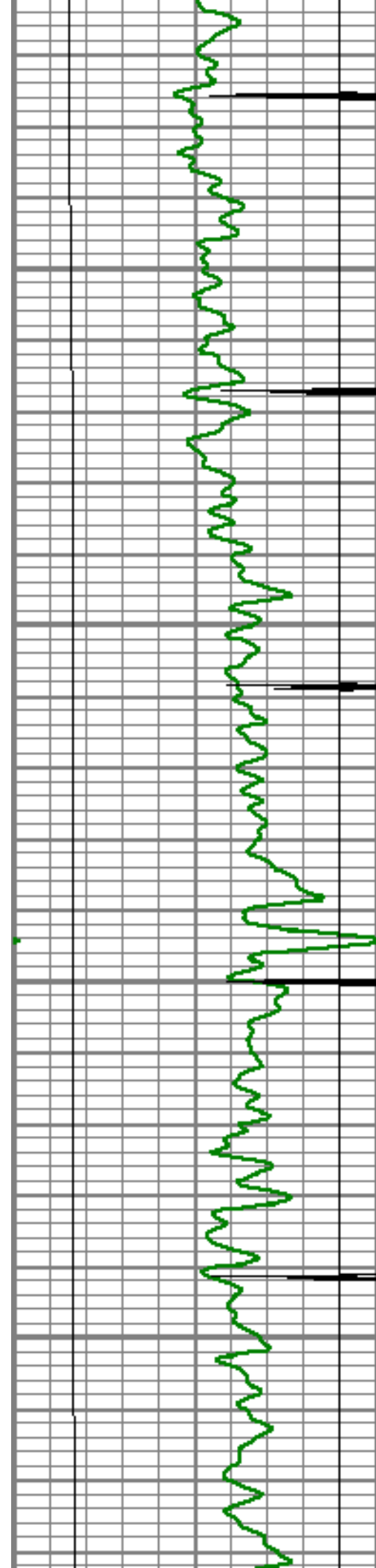
4400

4450

4500

4550



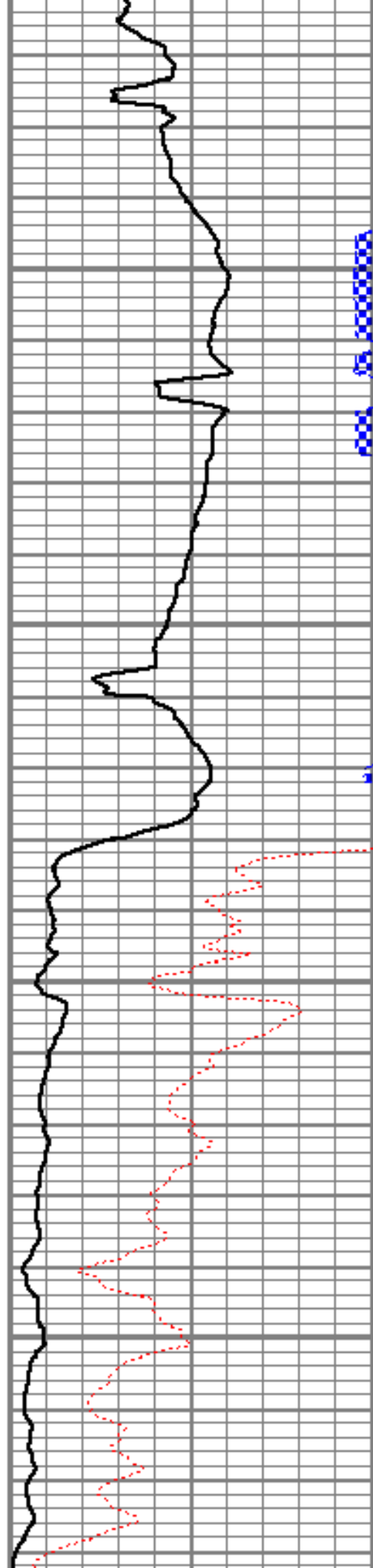


4600

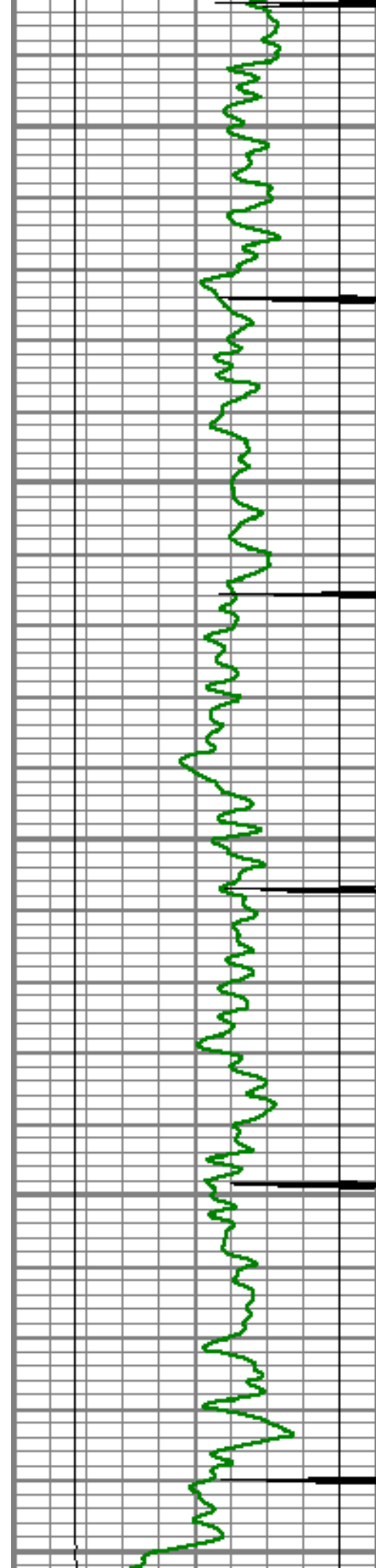
4650

4700

4750







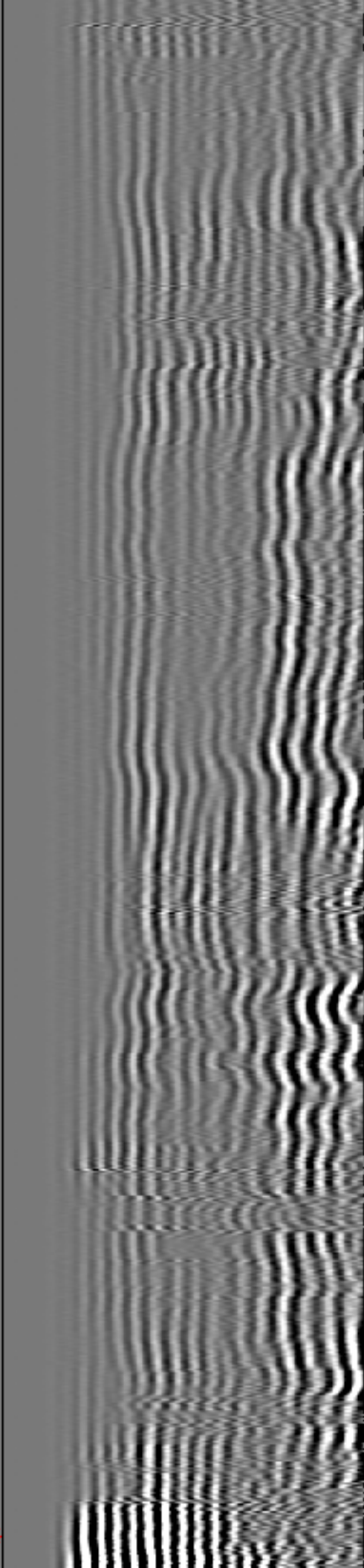
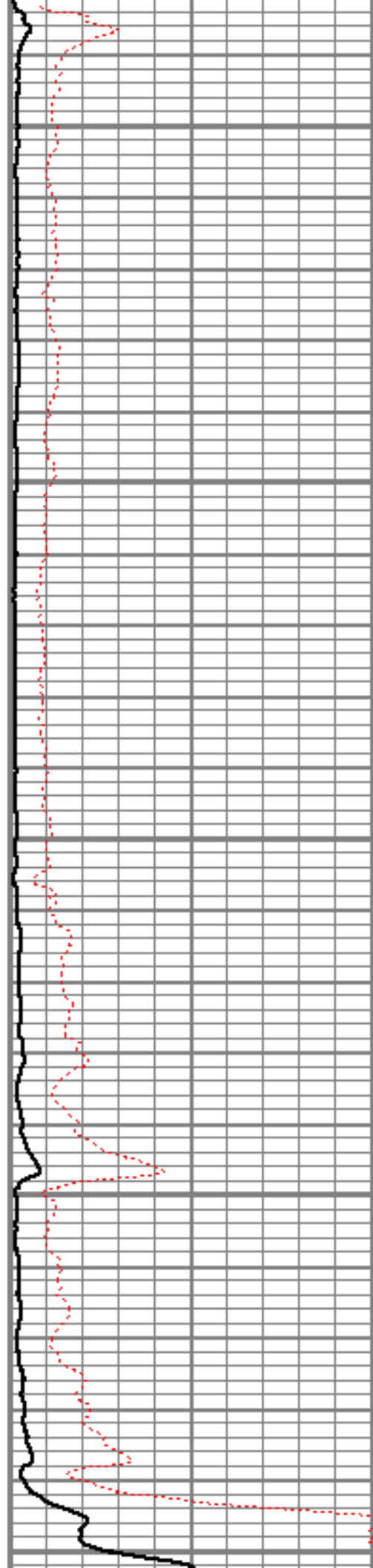
4800

4850

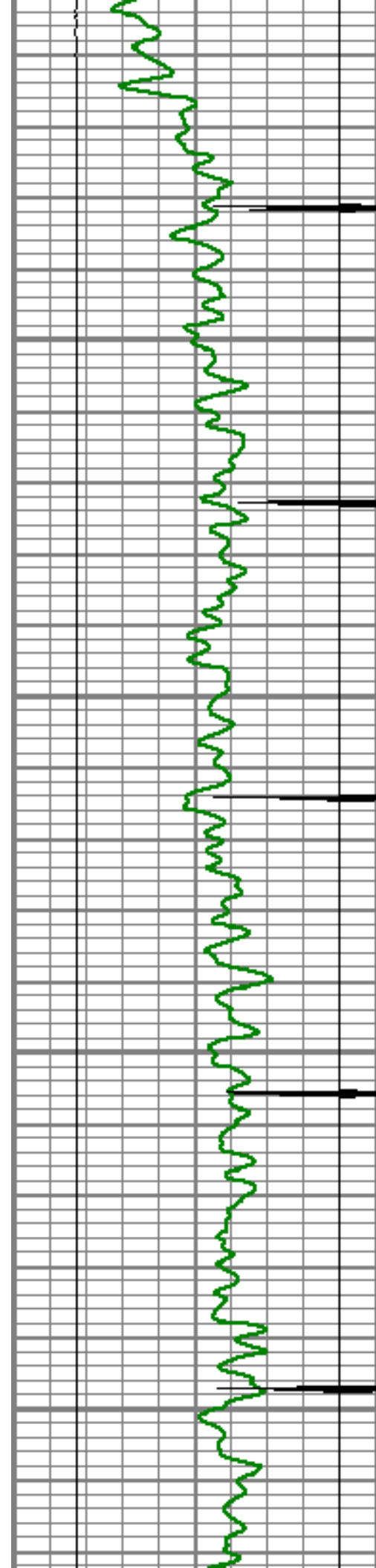
4900

4950

5000





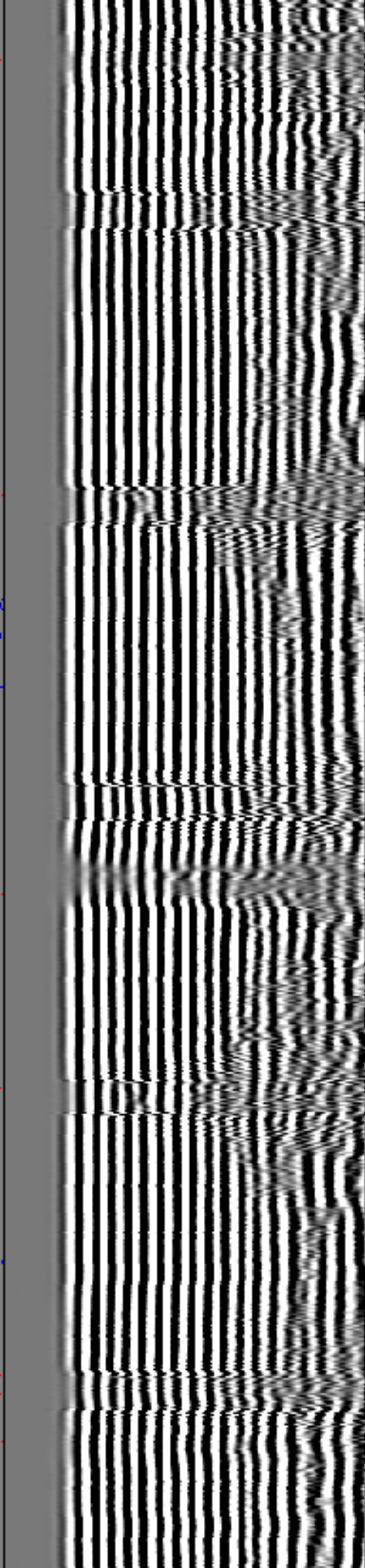
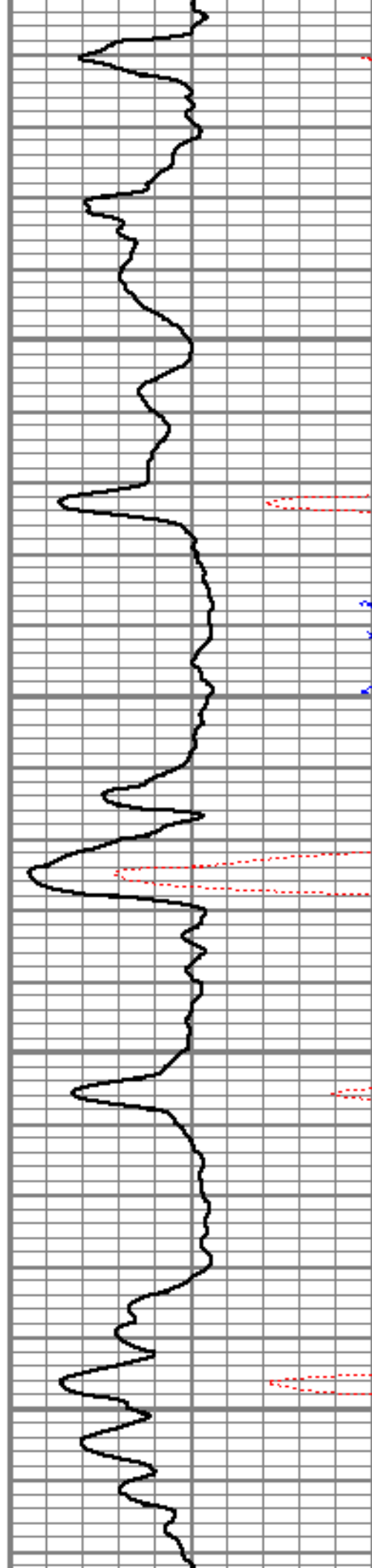


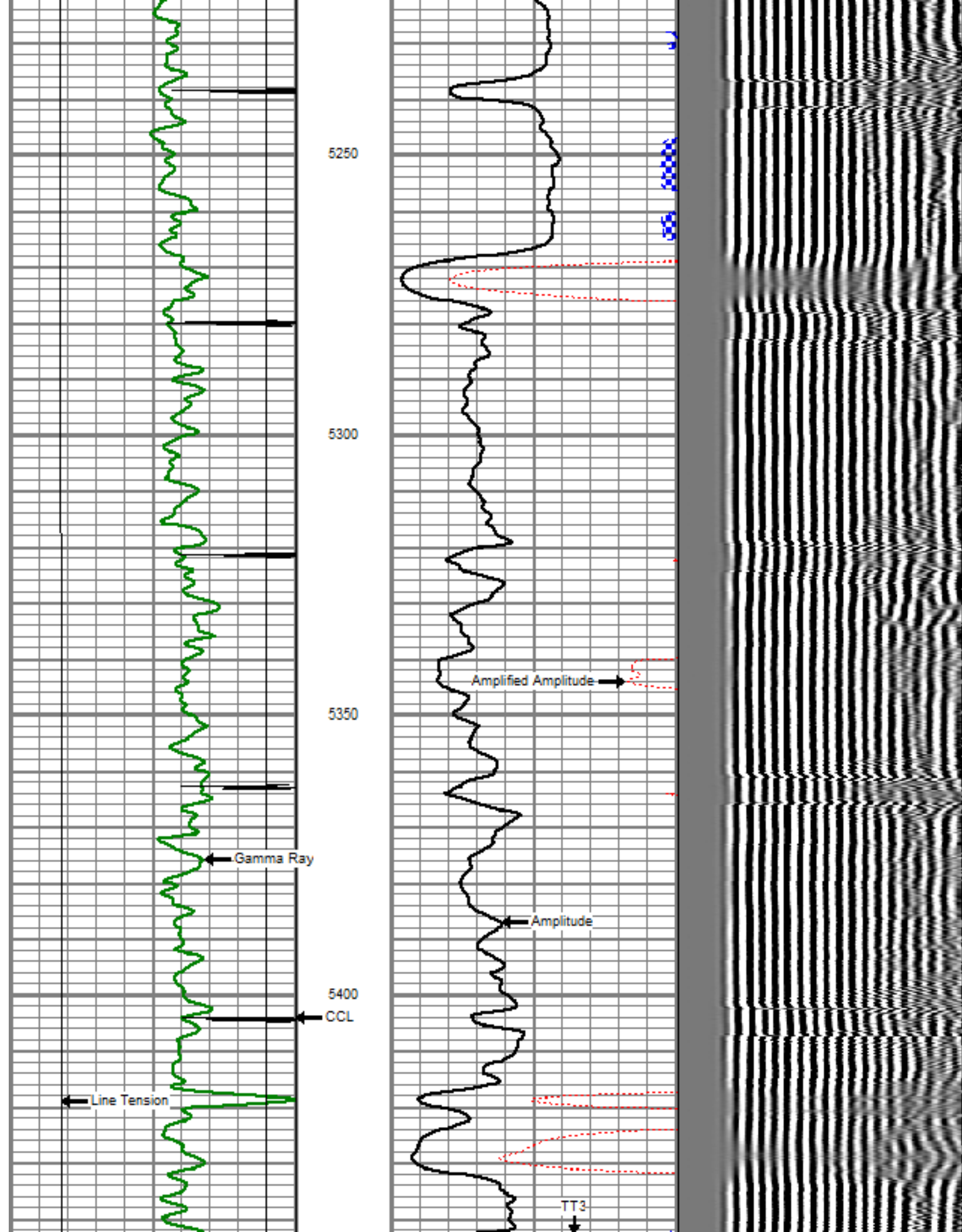
5050

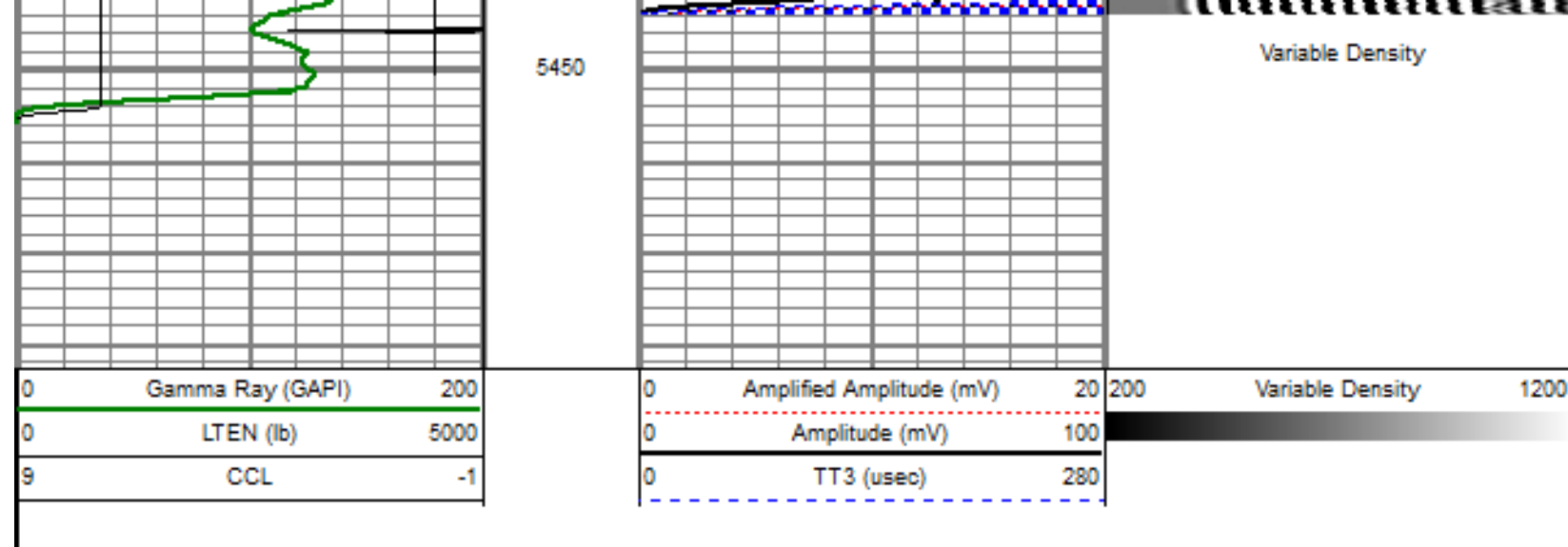
5100

5150

5200









Sensor	Offset (ft)	Schematic	Description	Len (ft)	OD (in)	Wt (lb)
			titan Titan Cable Head Go Pin.	1.02	1.44	1.50
			Centralizer-Probe (CENT-PROBE-1) Probe Bowspring Centralizer	2.88	2.75	10.00
WVF3	11.67		CBL-PRB_CBL_DIGITAL (PRB_CBL_DIG_28.77 1) Probe 2.75" Dual Receiver Bond		2.75	60.00
WVF5	10.67		Centralizer-Probe (CENT-PROBE-2) Probe Bowspring Centralizer	2.88	2.75	10.00



CCL	3.63		GR-PROBE_GRCCL (PRB_GRCCL_275_01' 4.54' 2.75' 30.00'	4.54	2.75	30.00
GR	0.90		Probe 2.75" 4 Channel Pulse			
Dataset: kennedy 8-4-21 cbl.db: field/well/run1/pass4 Total Length: 20.08 ft Total Weight: 111.50 lb O.D. 2.75 in						

	Company	ENCANA OIL & GAS (USA) INC.
	Well	KENNEDY 8-4-21
	Field	WATTENBERG
	County	WELD
	State	CO