
WILLIAMS PRODUCTION RMT INC - EBUS

**SG 523-35
GRAND VALLEY
Garfield County , Colorado**

Cement Surface Casing
19-Nov-2011

Post Job Report

The Road to Excellence Starts with Safety

| | | | |
|---|---|-------------------------|------------------------|
| Sold To #: 300721 | Ship To #: 2888482 | Quote #: | Sales Order #: 9034117 |
| Customer: WILLIAMS PRODUCTION RMT INC - EBUS | Customer Rep: Geary, Scott | | |
| Well Name: SG | Well #: 523-35 | API/UWI #: 05-045-20276 | |
| Field: GRAND VALLEY | City (SAP): PARACHUTE | County/Parish: Garfield | State: Colorado |
| Lat: N 39.391 deg. OR N 39 deg. 23 min. 27.01 secs. | Long: W 108.083 deg. OR W -109 deg. 55 min. 0.199 secs. | | |
| Contractor: H&P 278 | Rig/Platform Name/Num: H&P 278 | | |
| Job Purpose: Cement Surface Casing | | | |
| Well Type: Development Well | Job Type: Cement Surface Casing | | |
| Sales Person: MAYO, MARK | Srvc Supervisor: SMITH, DUSTIN | MBU ID Emp #: 418015 | |

Job Personnel

| HES Emp Name | Exp Hrs | Emp # | HES Emp Name | Exp Hrs | Emp # | HES Emp Name | Exp Hrs | Emp # |
|--------------------------|---------|--------|---------------|---------|--------|--------------|---------|--------|
| SMITH, DUSTIN Michael | 7 | 418015 | SPARKS, CLIFF | 7 | 502476 | TROUT, LANCE | 7 | 485310 |
| WYCKOFF, RYAN Scott | 7 | 476117 | | | | | | |

Equipment

| HES Unit # | Distance-1 way | HES Unit # | Distance-1 way | HES Unit # | Distance-1 way | HES Unit # | Distance-1 way |
|------------|----------------|------------|----------------|------------|----------------|------------|----------------|
| 10713212 | 60 mile | 10857016 | 60 mile | 10872429 | 60 mile | 10897849 | 60 mile |
| 11259883 | 60 mile | | | | | | |

Job Hours

| Date | On Location Hours | Operating Hours | Date | On Location Hours | Operating Hours | Date | On Location Hours | Operating Hours |
|----------|-------------------|-----------------|------|-------------------|-----------------|------|-------------------|-----------------|
| 11/19/11 | 7 | 3 | | | | | | |

TOTAL Total is the sum of each column separately

Job

| Formation Name | Top | Bottom | Called Out | Date | Time | Time Zone |
|------------------------|---------|-------------------|---------------|-----------------|-------|-----------|
| Formation Depth (MD) | | | On Location | 19 - Nov - 2011 | 05:00 | MST |
| Form Type | | BHST | Job Started | 19 - Nov - 2011 | 10:00 | MST |
| Job depth MD | 749. ft | Job Depth TVD | Job Completed | 19 - Nov - 2011 | 10:47 | MST |
| Water Depth | | Wk Ht Above Floor | Departed Loc | 19 - Nov - 2011 | 12:00 | MST |
| Perforation Depth (MD) | From | To | | | | |

Well Data

| Description | New / Used | Max pressure psig | Size in | ID in | Weight lbm/ft | Thread | Grade | Top MD ft | Bottom MD ft | Top TVD ft | Bottom TVD ft |
|----------------|------------|-------------------|---------|-------|---------------|--------|-------|-----------|--------------|------------|---------------|
| OPEN HOLE | | | | 13.5 | | | | . | 760. | | |
| SURFACE CASING | New | | 9.625 | 9.001 | 32.3 | | | . | 749. | | |

Sales/Rental/3rd Party (HES)

| Description | Qty | Qty uom | Depth | Supplier |
|--|-----|---------|-------|----------|
| PLUG,CMTG,TOP,9 5/8,HWE,8.16 MIN/9.06 MA | 1 | EA | | |

Tools and Accessories

| Type | Size | Qty | Make | Depth | Type | Size | Qty | Make | Depth | Type | Size | Qty | Make |
|--------------|------|-----|------|-------|-------------|------|-----|------|-------|----------------|-------|-----|------|
| Guide Shoe | | | | | Packer | | | | | Top Plug | 9 5/8 | 1 | HES |
| Float Shoe | | | | | Bridge Plug | | | | | Bottom Plug | | | |
| Float Collar | | | | | Retainer | | | | | SSR plug set | | | |
| Insert Float | | | | | | | | | | Plug Container | 9 5/8 | 1 | HES |
| Stage Tool | | | | | | | | | | Centralizers | | | |

Miscellaneous Materials

| Gelling Agt | Conc | Surfactant | Conc | Acid Type | Qty | Conc | % |
|---------------|------|------------|------|-----------|------|------|---|
| Treatment Fld | Conc | Inhibitor | Conc | Sand Type | Size | Qty | |

Fluid Data

Stage/Plug #: 1

| Fluid # | Stage Type | Fluid Name | Qty | Qty uom | Mixing Density lbm/gal | Yield ft ³ /sk | Mix Fluid Gal/sk | Rate bbl/min | Total Mix Fluid Gal/sk | |
|--|--------------------|-------------------------------|-----------------|-----------------------------------|------------------------|---------------------------|------------------|--------------|------------------------|----|
| 1 | Water Spacer | | 20.00 | bbl | 8.34 | .0 | .0 | 4.0 | | |
| 2 | Tail Cement | VERSACEM (TM) SYSTEM (452010) | 210.0 | sacks | 12.8 | 2.11 | 11.75 | 6 | 11.75 | |
| 3 | Displacement Fluid | | 55.9 | bbl | 8.34 | .0 | .0 | 10.0 | | |
| Calculated Values | | Pressures | | Volumes | | | | | | |
| Displacement | 55.9 | Shut In: Instant | | Lost Returns | 0 | Cement Slurry | 78.9 | Pad | | |
| Top Of Cement | SURFACE | 5 Min | | Cement Returns | 15 | Actual Displacement | 55.9 | Treatment | | |
| Frac Gradient | | 15 Min | | Spacers | 20 | Load and Breakdown | | Total Job | 154.8 | |
| Rates | | | | | | | | | | |
| Circulating | | Mixing | 6 | Displacement | 10 | Avg. Job | | | 7 | |
| Cement Left In Pipe | Amount | 38.9 ft | Reason | Shoe Joint | | | | | | |
| Frac Ring # 1 @ | ID | | Frac ring # 2 @ | ID | | Frac Ring # 3 @ | ID | | Frac Ring # 4 @ | ID |
| The Information Stated Herein Is Correct | | | | Customer Representative Signature | | | | | | |

The Road to Excellence Starts with Safety

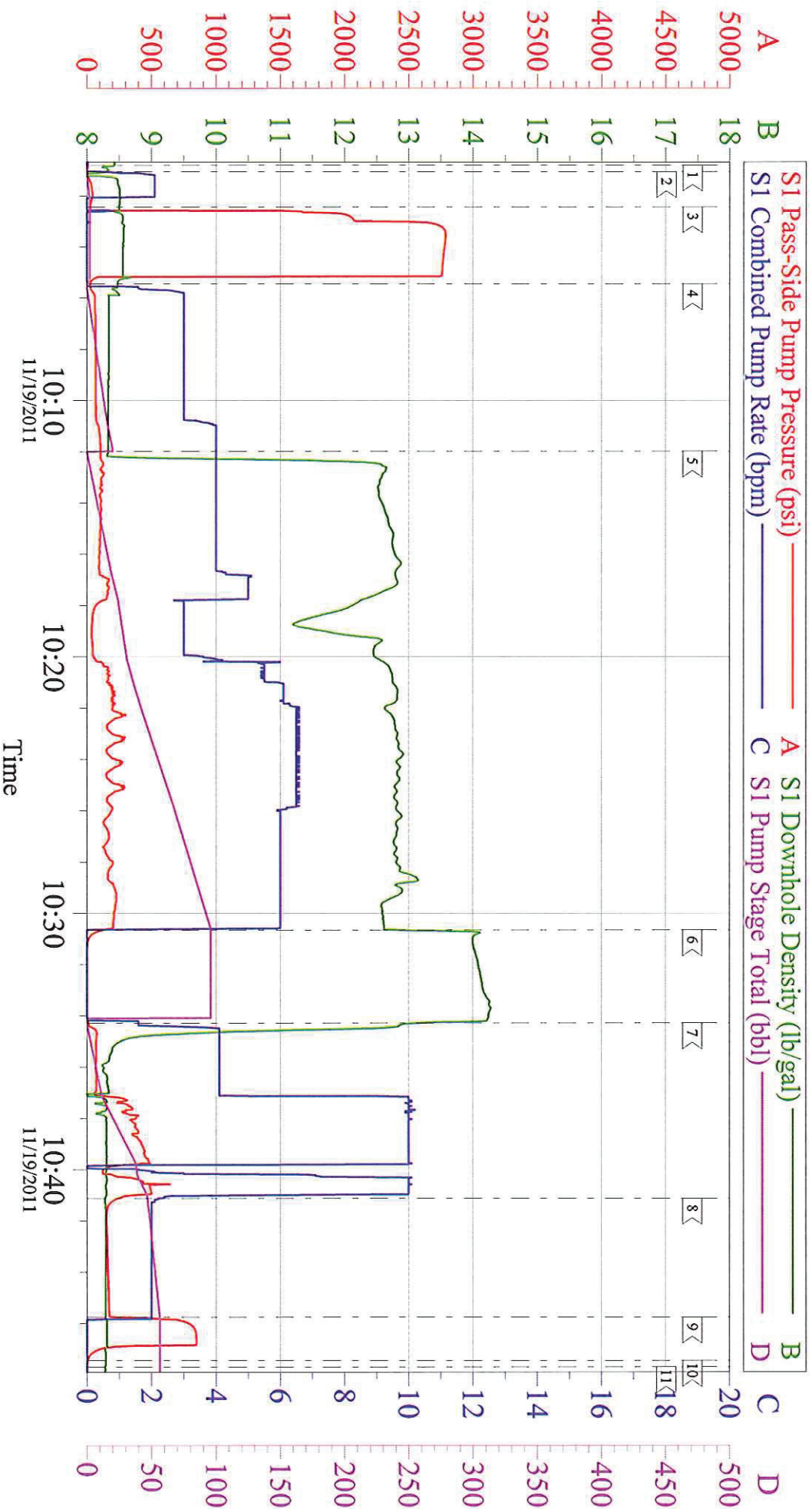
| | | | |
|---|--------------------------------|---|------------------------|
| Sold To #: 300721 | Ship To #: 2888482 | Quote #: | Sales Order #: 9034117 |
| Customer: WILLIAMS PRODUCTION RMT INC - EBUS | Customer Rep: Geary, Scott | | |
| Well Name: SG | Well #: 523-35 | API/UWI #: 05-045-20276 | |
| Field: GRAND VALLEY | City (SAP): PARACHUTE | County/Parish: Garfield | State: Colorado |
| Legal Description: | | | |
| Lat: N 39.391 deg. OR N 39 deg. 23 min. 27.01 secs. | | Long: W 108.083 deg. OR W -109 deg. 55 min. 0.199 secs. | |
| Contractor: H&P 278 | Rig/Platform Name/Num: H&P 278 | | |
| Job Purpose: Cement Surface Casing | | | Ticket Amount: |
| Well Type: Development Well | | Job Type: Cement Surface Casing | |
| Sales Person: MAYO, MARK | Srv Supervisor: SMITH, DUSTIN | MBU ID Emp #: 418015 | |

| Activity Description | Date/Time | Cht # | Rate bbl/ min | Volume bbl | | Pressure psig | | Comments |
|--|---------------------|----------|---------------------|---------------|-------|------------------|--------|--|
| | | | | Stage | Total | Tubing | Casing | |
| Call Out | 11/19/2011 01:15 | | | | | | | ELITE # 7 |
| Depart Yard Safety Meeting | 11/19/2011 03:00 | | | | | | | ALL HES EMPLOYEES |
| Arrive At Loc | 11/19/2011 05:00 | | | | | | | ARRIVED ON LOCATION 2 HOURS EARLY DIDNT START CHARGING TIME UNTIL REQUESTD ON LOCATION TIME |
| Assessment Of Location Safety Meeting | 11/19/2011 05:30 | | | | | | | ALL HES EMPLOYEES |
| Pre-Rig Up Safety Meeting | 11/19/2011 06:20 | | | | | | | ALL HES EMPLOYEES |
| Rig-Up Equipment | 11/19/2011 06:30 | | | | | | | 1 F-550 PICKUP 1 HT- 400 PUMP TRUCK 1 660 BULK TRUCK |
| Pre-Job Safety Meeting | 11/19/2011 09:45 | | | | | | | ALL HES EMPLOYEES AND RIG CREW |
| Rig-Up Completed | 11/19/2011 10:00 | | | | | | | RIG CIRCULATED FOR 1 HOUR PRIOR TO JOB |
| Start Job | 11/19/2011 10:00 | | | | | | | TD:760 TP: 749 SJ: 38.9 9 5/8 32.3# CSG 13 1/2 OH. MUD WT. 8.8 PPG VISC: 60 |
| Test Lines | 11/19/2011 10:02 | | | | | 2802. 0 | | PRESSURE TEST OK |
| Pump Spacer | 11/19/2011 10:05 | | 4 | 20 | 20 | | 119.0 | FRESH WATER |
| Activity Description | Date/Time | Cht # | Rate bbl/ min | Volume bbl | | Pressure psig | | Comments |
| | | | | Stage | Total | Tubing | Casing | |

| | | | | | | | | |
|-----------------------------|---------------------|--|----|------|------|--|-------|---|
| Pump Tail Cement | 11/19/2011 10:11 | | 7 | 78.9 | 78.9 | | 181.0 | 210 SKS 12.8 2.11 YIELD 11.75 GAL/SK TAIL CEMENT WEIGHT VERIFIED VIA MUD SCALES THROUGHOUT TAIL CEMENT HAD CEMENT DELIVERY ISSUES AT BEGINNING OF TAIL CEMENT GOT ISSUE RESOLVED AND RESUMED MIXING |
| Shutdown | 11/19/2011 10:30 | | | | | | | |
| Drop Plug | 11/19/2011 10:30 | | | | | | | PLUG AWAY NO PROBLEMS |
| Pump Displacement | 11/19/2011 10:34 | | 10 | 55.9 | 55.9 | | 518.0 | FRESH WATER WASH UP ON TOP OF PLUG |
| Slow Rate | 11/19/2011 10:41 | | 2 | 45 | 45 | | 190.0 | SLOW RATE TO BUMP PLUG |
| Bump Plug | 11/19/2011 10:45 | | 2 | 55.9 | 55.9 | | 862.0 | PSI BEFORE BUMPING PLUG @ 190 PSI BUMPED PLUG UP TO 862 PSI |
| Check Floats | 11/19/2011 10:47 | | | | | | | FLOATS HELD 1/2 BBL BACK TO DISPLACEMENT TANK |
| End Job | 11/19/2011 10:47 | | | | | | | GOOD CIRCULATION THROUGHOUT JOB NO PIPE MOVEMENT DURING JOB GOT 15 BBLs CEMENT TO SURFACE |
| Pre-Rig Down Safety Meeting | 11/19/2011 11:10 | | | | | | | ALL HES EMPLOYEES |
| Rig-Down Equipment | 11/19/2011 11:20 | | | | | | | |
| Pre-Convoy Safety Meeting | 11/19/2011 11:50 | | | | | | | ALL HES EMPLOYEES |
| Crew Leave Location | 11/19/2011 12:00 | | | | | | | THANK YOU FOR USING HALLIBURTON CEMENT DUSTIN SMITH AND CREW |

WILLIAMS PRODUCTION SG 523-35

9 5/8 SURFACE

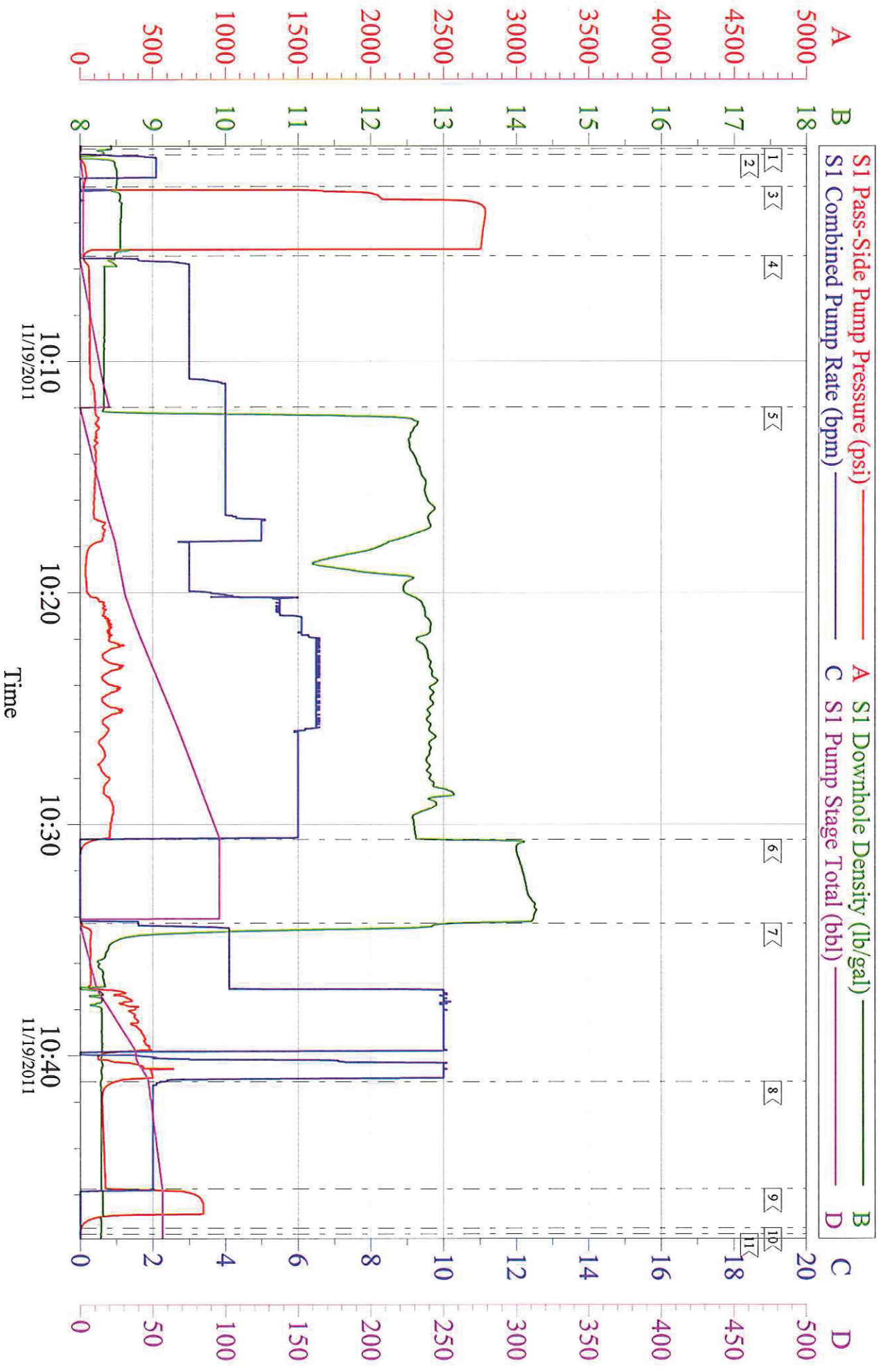


Customer: WILLIAMS PRODUCTION
Well Description: SG 523-35
Company Rep: SCOTT GEARY

Job Date: 19-Nov-2011
Job Type: 9 5/8 SURFACE
Cement Supervisor: DUSTIN SMITH

Sales Order #: 9034117
ADC Used: YES
Elite #: 7 RYAN WYCKOFF

WILLIAMS PRODUCTION SG 523-35 9 5/8 SURFACE



Customer: WILLIAMS PRODUCTION
Well Description: SG 523-35
Company Rep: SCOTT GEARY

Job Date: 19-Nov-2011
Job Type: 9 5/8 SURFACE
Cement Supervisor: DUSTIN SMITH

Sales Order #: 9034117
ADC Used: YES
Elite #: 7 RYAN WYCKOFF

Company: WILLIAMS PRODUCTION

Submitted by: DUSTIN SMITH

Location: J. TROUT/C.MARTINEZ

SG

523-35

Date: 11/19

Date Rec.: 11/19

S.O.# 903

Job Type: SUR

| | | |
|-----------------------------|-------|------------------|
| Specific Gravity | MAX | 1 |
| | 8 | 7 |
| Potassium (K) | 5000 | 0 Mg / L |
| Calcium (Ca) | 500 | 120 Mg / L |
| Magnesium (Mg) | 300 | 0 Mg / L |
| Sulfides (Cl) | 3000 | 0 Mg / L |
| Sulfates (SO ₄) | 1500 | UNDER 200 Mg / L |
| Chlorine (Cl ₂) | | 0 Mg / L |
| | 40-80 | 40 Deg |
| Dissolved Solids | | 590 Mg / L |

Respectfully: DUSTIN SMITH

Title: CEMENTING

Location: Grand Junction