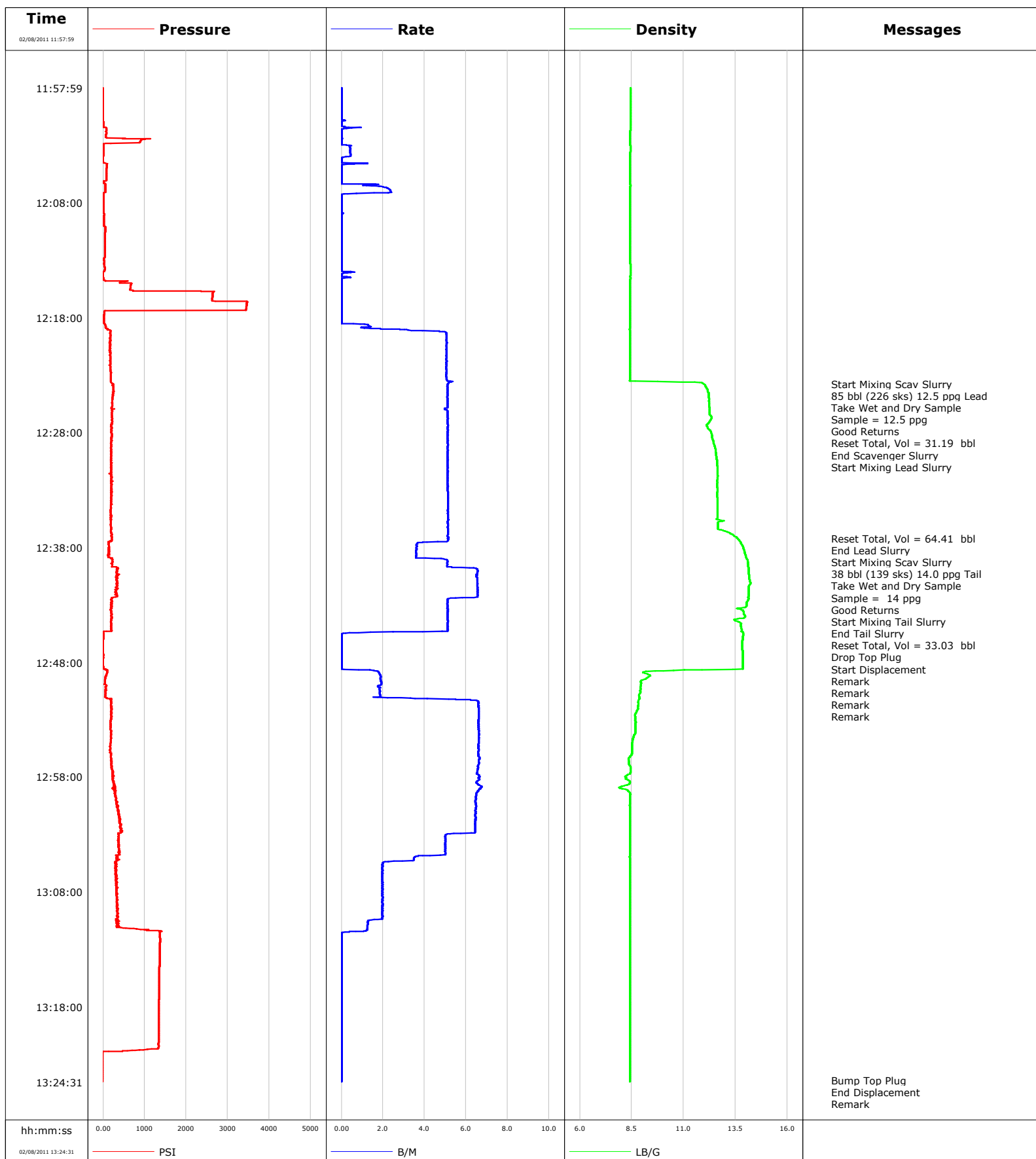


Well MF06C-16 H17 696
Field N Parachute
Engineer Tom Leduc
Country United States

Client Encana
SIR No.
Job Type 9 5/8 Surface
Job Date 02-04-2011



Well			Field		Job Start		Customer		Job Number	
MF06C-16 H17 696 MF07B-16			N Parachute		Feb/08/2011		Encana		BAD4-00293	
Date	Time 24-hr clock	Treating Pressure PSI	Flow Rate B/M	Density LB/G	Volume BBL	Message				
02/08/2011	12:20:00	182	5.1	8.42	7.8					
02/08/2011	12:22:30	169	5.0	8.41	20.4					
02/08/2011	12:23:45					Start Mixing Scav Slurry				
02/08/2011	12:23:45	235	5.1	11.95	26.8					
02/08/2011	12:23:46					85 bbl (226 sks) 12.5 ppg Lead				
02/08/2011	12:23:46					Take Wet and Dry Sample				
02/08/2011	12:23:46					Sample = 12.5 ppg				
02/08/2011	12:23:46					Good Returns				
02/08/2011	12:23:46	238	5.1	11.97	26.9					
02/08/2011	12:24:37					Reset Total, Vol = 31.19 bbl				
02/08/2011	12:24:37	244	5.1	12.20	31.2					
02/08/2011	12:25:00	229	5.1	12.22	33.1					
02/08/2011	12:25:15					End Scavenger Slurry				
02/08/2011	12:25:15	229	5.1	12.21	34.4					
02/08/2011	12:25:16					Start Mixing Lead Slurry				
02/08/2011	12:25:16	220	5.1	12.21	34.5					
02/08/2011	12:27:30	189	5.1	12.14	45.9					
02/08/2011	12:32:30	204	5.1	12.61	71.5					
02/08/2011	12:35:00	178	5.1	12.63	84.3					
02/08/2011	12:37:12					Reset Total, Vol = 64.41 bbl				
02/08/2011	12:37:12	216	5.1	13.59	95.6					
02/08/2011	12:37:15					End Lead Slurry				
02/08/2011	12:37:15	215	5.1	13.62	95.9					
02/08/2011	12:37:16					Start Mixing Scav Slurry				
02/08/2011	12:37:16					38 bbl (139 sks) 14.0 ppg Tail				
02/08/2011	12:37:16					Take Wet and Dry Sample				
02/08/2011	12:37:16	214	5.1	13.62	95.9					
02/08/2011	12:37:17					Sample = 14 ppg				
02/08/2011	12:37:17					Good Returns				
02/08/2011	12:37:17	214	5.2	13.63	96.0					
02/08/2011	12:37:30	130	4.6	13.73	97.1					
02/08/2011	12:38:05					Start Mixing Tail Slurry				
02/08/2011	12:38:05	150	3.6	13.88	99.3					
02/08/2011	12:40:00	322	6.5	14.13	108.1					
02/08/2011	12:42:30	208	5.1	14.13	124.3					
02/08/2011	12:43:19					End Tail Slurry				
02/08/2011	12:43:19	200	5.1	13.55	128.5					
02/08/2011	12:43:21					Reset Total, Vol = 33.03 bbl				
02/08/2011	12:43:21	199	5.1	13.60	128.6					
02/08/2011	12:43:23					Drop Top Plug				
02/08/2011	12:43:23					Start Displacement				
02/08/2011	12:43:23	182	5.1	13.75	128.8					
02/08/2011	12:43:24					Remark				
02/08/2011	12:43:24					Remark				
02/08/2011	12:43:24	175	5.1	13.75	128.9					
02/08/2011	12:43:25					Remark				
02/08/2011	12:43:25					Remark				
02/08/2011	12:43:25	175	5.1	13.81	129.0					
02/08/2011	12:45:00	197	5.1	13.77	137.1					
02/08/2011	12:47:30	-1	0.0	13.84	139.0					
02/08/2011	12:50:00	77	1.9	8.94	141.5					
02/08/2011	12:52:30	197	6.6	8.67	152.4					
02/08/2011	12:55:00	185	6.6	8.52	168.9					
02/08/2011	12:57:30	224	6.5	8.44	185.4					

Well			Field		Job Start	Customer	Job Number
MF06C-16 H17 696 MF07B-16			N Parachute		Feb/08/2011	Encana	BAD4-00293
Date	Time 24-hr clock	Treating Pressure PSI	Flow Rate B/M	Density LB/G	Volume BBL	Message	
02/08/2011	13:02:30	441	6.5	8.41	218.0		
02/08/2011	13:05:00	346	3.5	8.41	230.8		
02/08/2011	13:07:30	315	2.0	8.41	236.2		
02/08/2011	13:10:00	336	2.0	8.41	241.1		
02/08/2011	13:12:30	1366	0.0	8.41	243.2		
02/08/2011	13:15:00	1353	0.0	8.42	243.2		
02/08/2011	13:17:30	1344	0.0	8.42	243.2		
02/08/2011	13:20:00	1335	0.0	8.42	243.2		
02/08/2011	13:22:30	-14	0.0	8.42	243.2		
02/08/2011	13:24:22					Bump Top Plug	
02/08/2011	13:24:22					End Displacement	
02/08/2011	13:24:22	-18	0.0	8.42	243.2		
02/08/2011	13:24:24					Remark	
02/08/2011	13:24:24					Remark	
02/08/2011	13:24:24					Remark	
02/08/2011	13:24:24					Remark	
02/08/2011	13:24:24	-18	0.0	8.42	243.2		
02/08/2011	13:24:27					Remark	
02/08/2011	13:24:27					Remark	
02/08/2011	13:24:27	-18	0.0	8.42	243.2		
02/08/2011	13:24:29					End Job	
02/08/2011	13:24:29	-18	0.0	8.42	243.2		

Post Job Summary

Average Pump Rates, bbl/min					Volume of Fluid Injected, bbl								
Slurry 4.5	N2	Mud 0.0	Maximum Rate 6.8	Total Slurry 243.2	Mud 0.0	Spacer 34.5	N2						
Treating Pressure Summary, psi					Breakdown Fluid								
Maximum 3467	Final 1400	Average 414	Bump Plug to 900	Breakdown	Type FreshWater	Volume 294.0 bbl	Density 8.34 lb/gal						
Avg. N2 Percent		Designed Slurry Volume 130.0 bbl		Displacement 114.4 bbl		Mix Water Temp 65 degF		Cement Circulated to Surface?		<input checked="" type="checkbox"/>	Volume		
								Washed Thru Perfs		<input type="checkbox"/>	To		
Customer or Authorized Representative Cody Huseby				Schlumberger Supervisor Tom Leduc				Circulation Lost		<input type="checkbox"/>	Job Completed		<input checked="" type="checkbox"/>
								-			-		