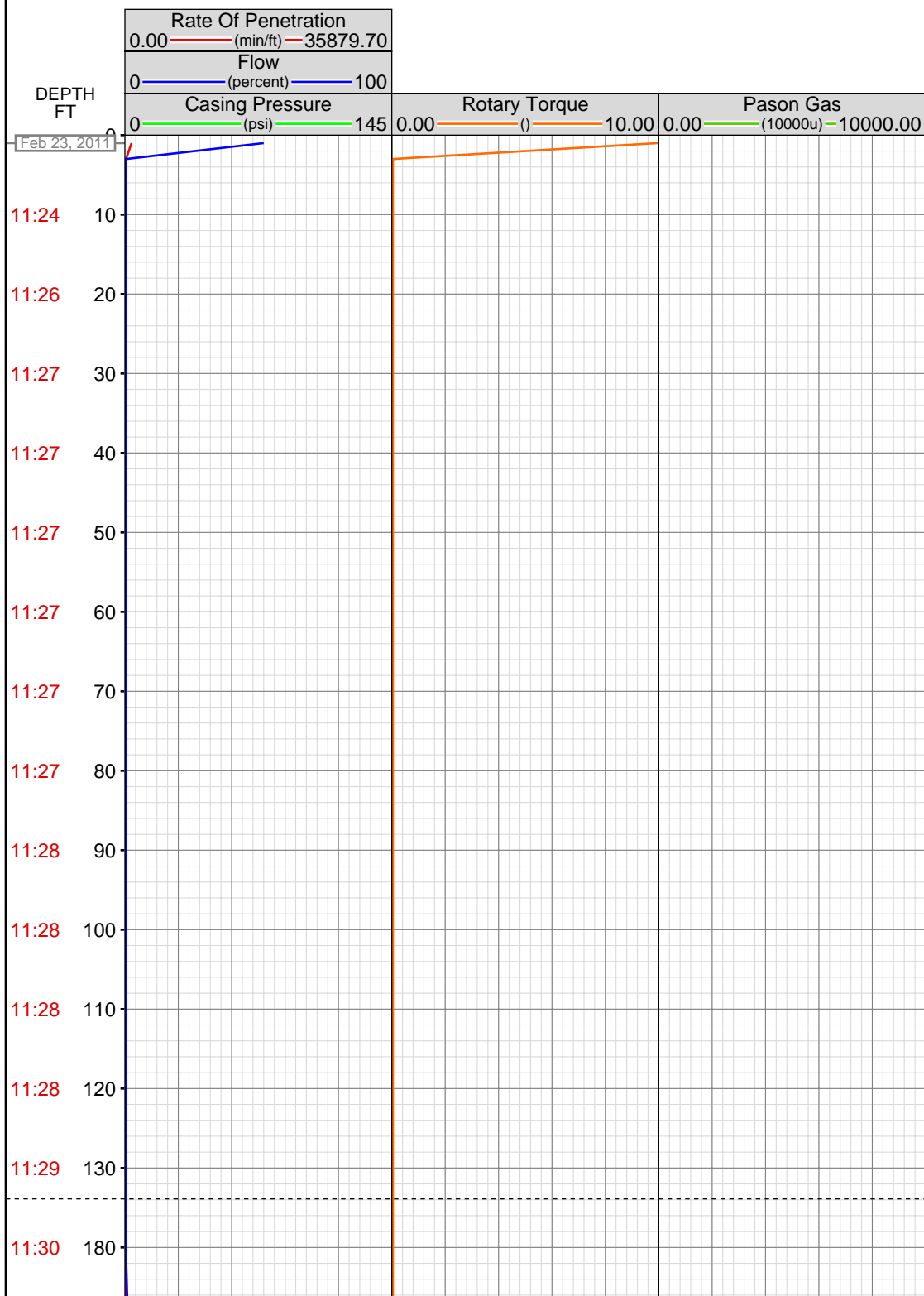


# DataHub EDR Log

Thu Mar 03, 2011 07:54:46  
Well Dossier 1298426476  
Marilyn Tucker

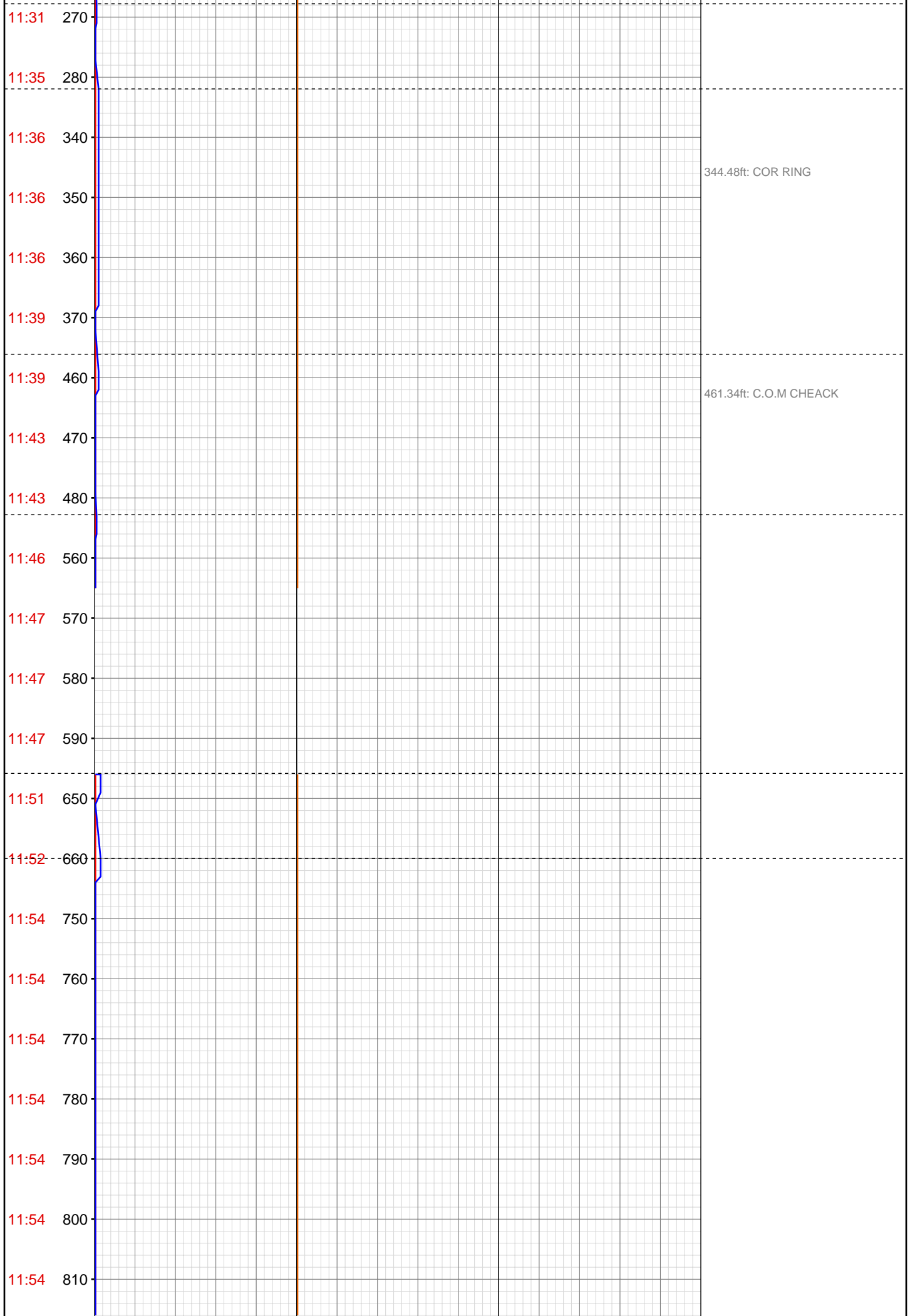
**OPERATOR:** EnCana Oil & Gas (USA), Inc.  
**WELL:** NPMF 06C-16 H-17 696  
**FIELD:**  
**LOCATION:** QTRQTR:SENE SEC:17 TWP:6S RNG:96W R1E15S D3  
**COUNTRY:** USA  
**RIG:** Pat-UTI 303

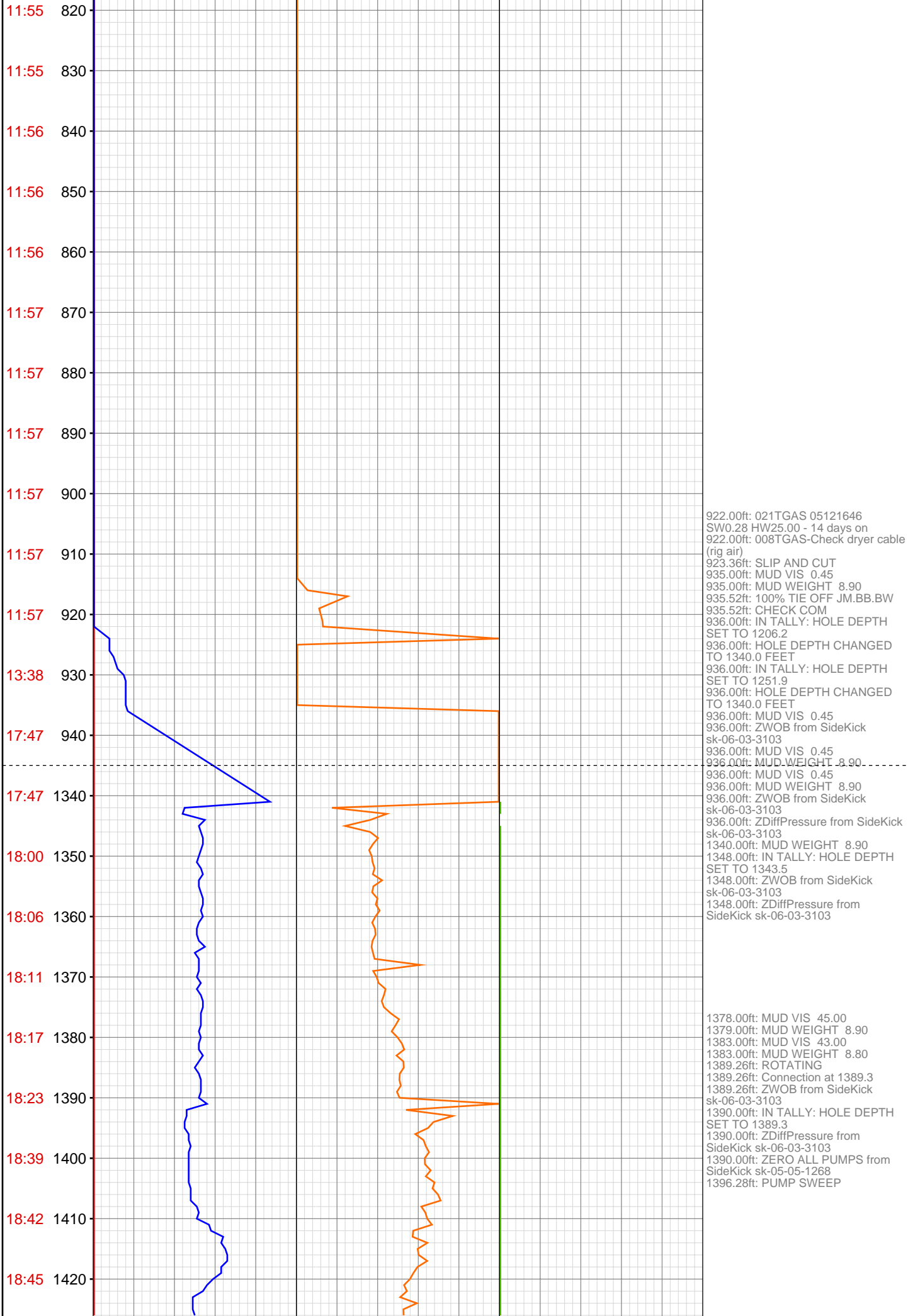
**CONTRACTOR:** Patterson-UTI Drilling Company  
**UNIQUE WELL ID:** 05 045 18704 01  
**SPUD DATE:** Feb 23, 2011 18:00  
**RELEASE DATE:** Feb 28, 2011 16:30

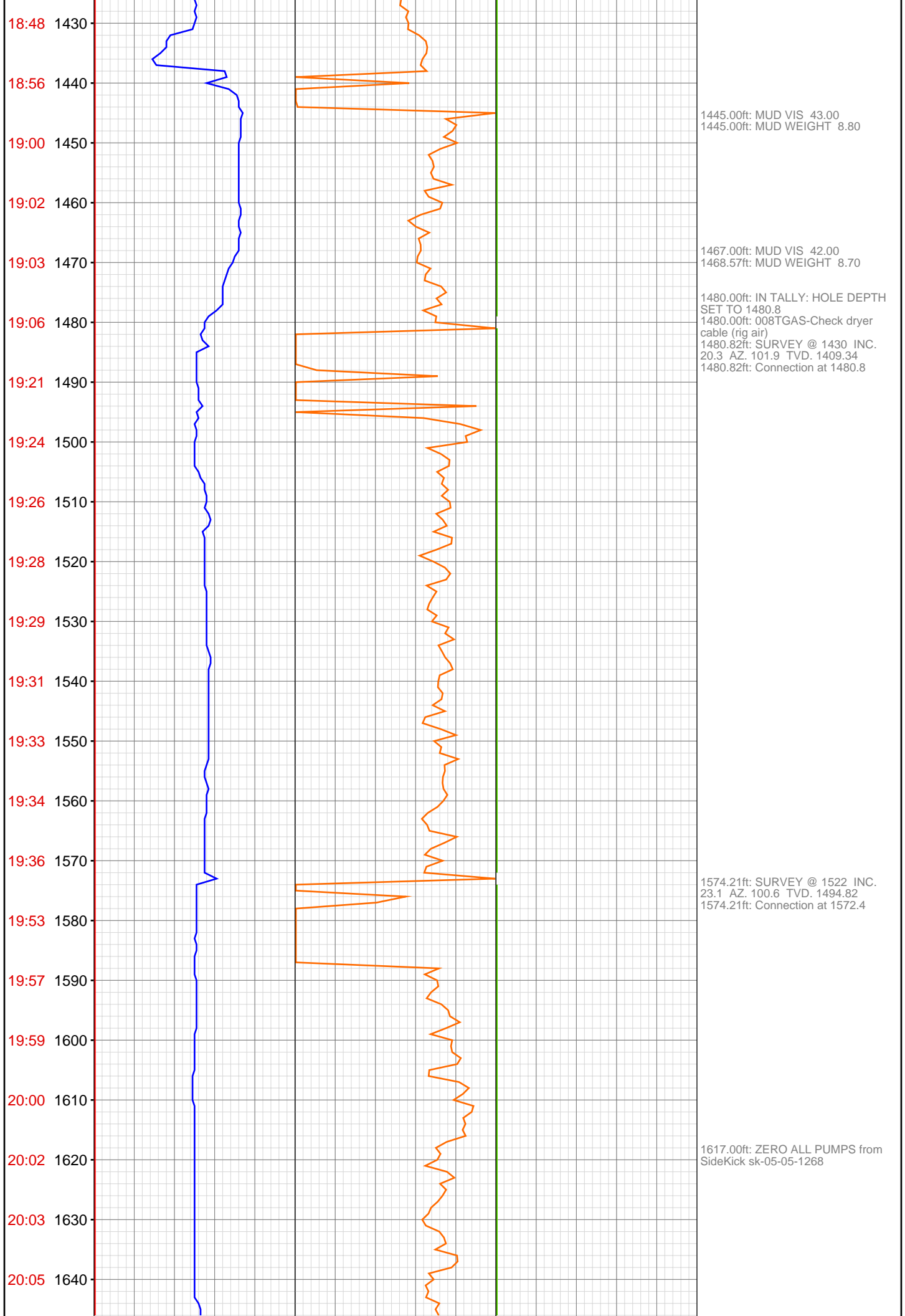


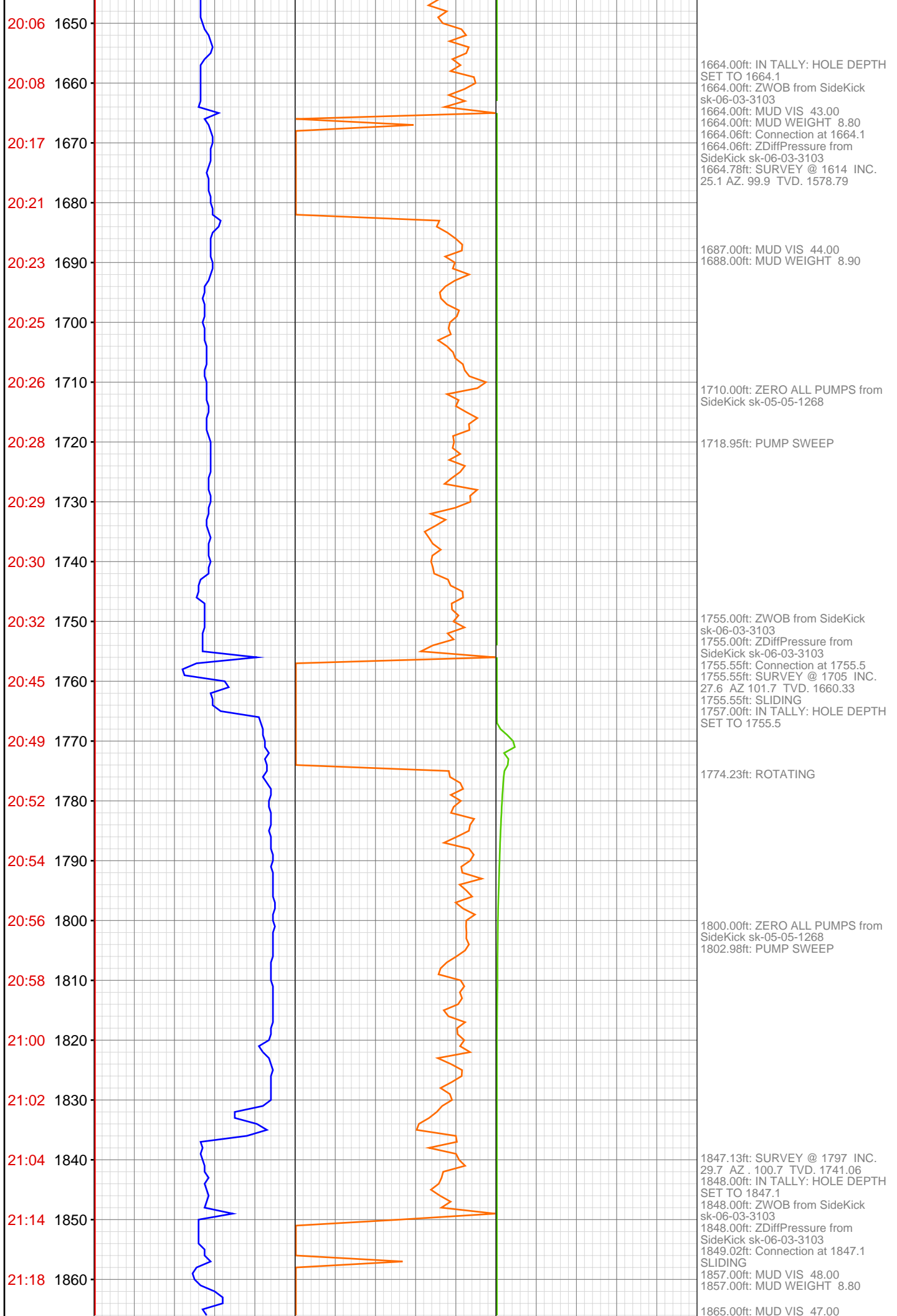
## MEMOS

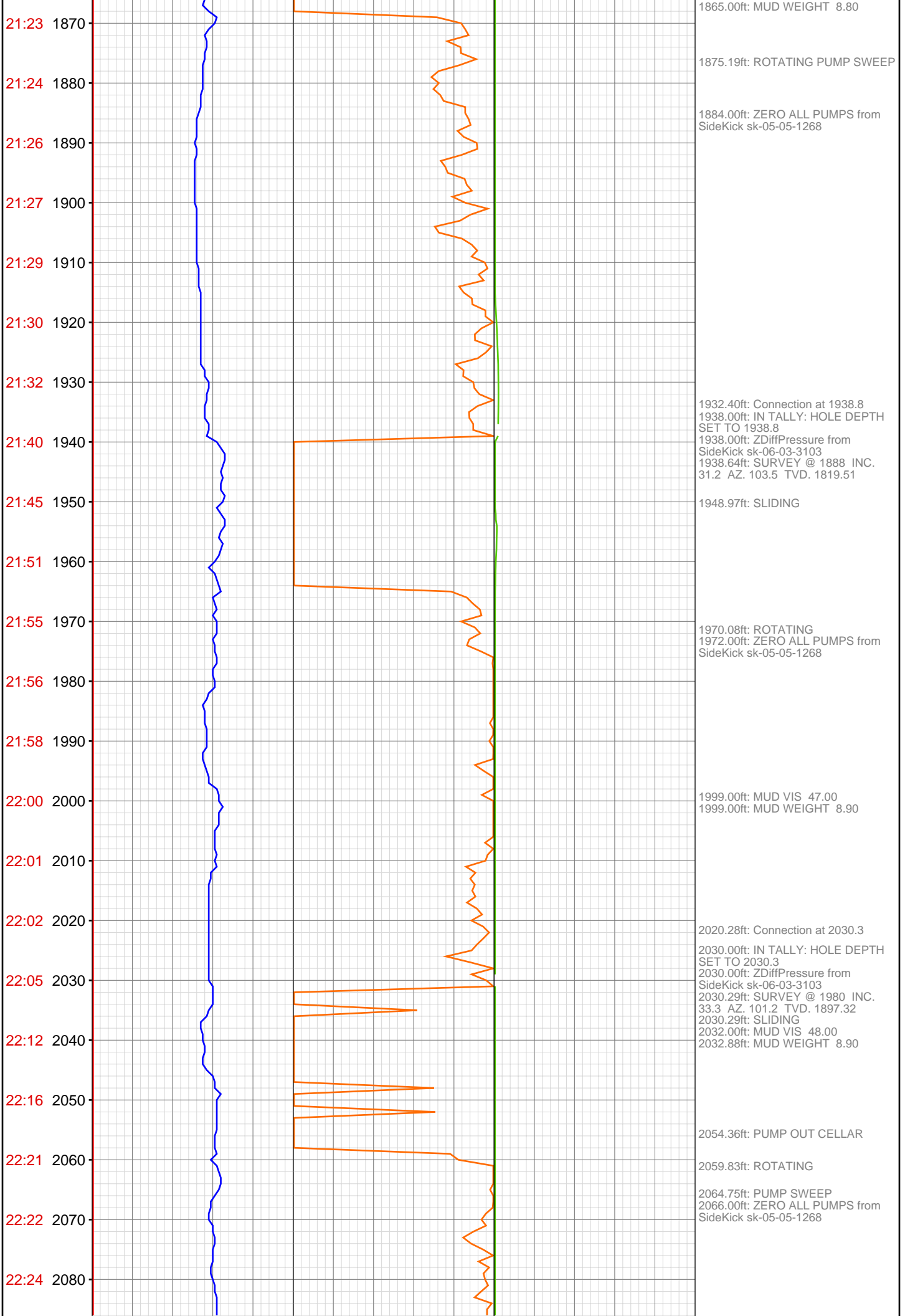
0.27ft: MAKE UP BIT  
0.27ft: 100% TIE OFF BB,JM,TB  
0.27ft: TURN ON M.W.D.  
0.27ft: T.I.H.  
0.27ft: ROTATING RUBBER

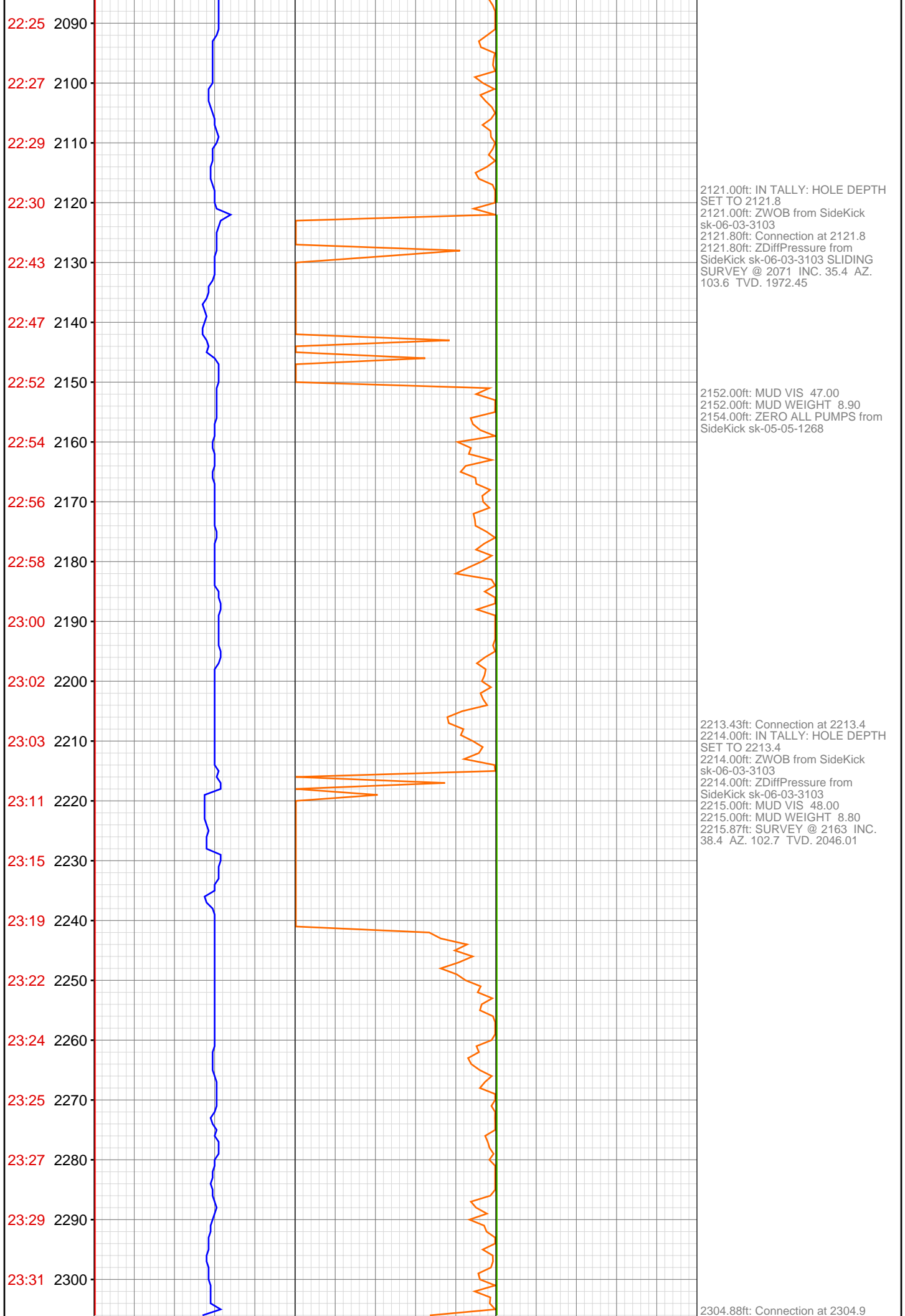


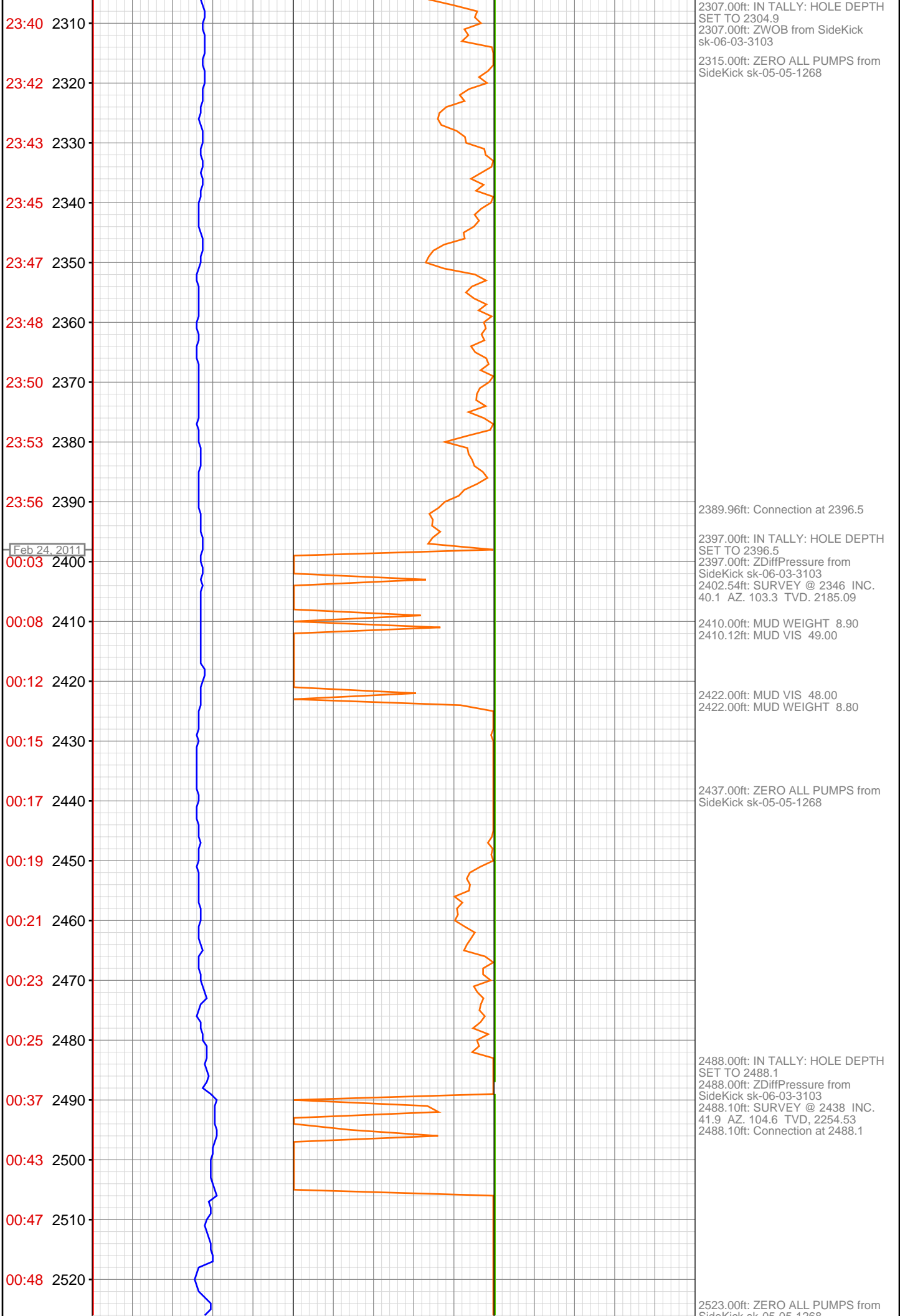














00:50 2530  
00:52 2540  
00:54 2550  
00:55 2560  
00:58 2570  
01:08 2580  
01:09 2590  
01:11 2600  
01:13 2610  
01:14 2620  
01:16 2630  
01:18 2640  
01:19 2650  
01:21 2660  
01:23 2670  
01:37 2680  
01:41 2690  
01:43 2700  
01:44 2710  
01:46 2720  
01:47 2730  
01:50 2740

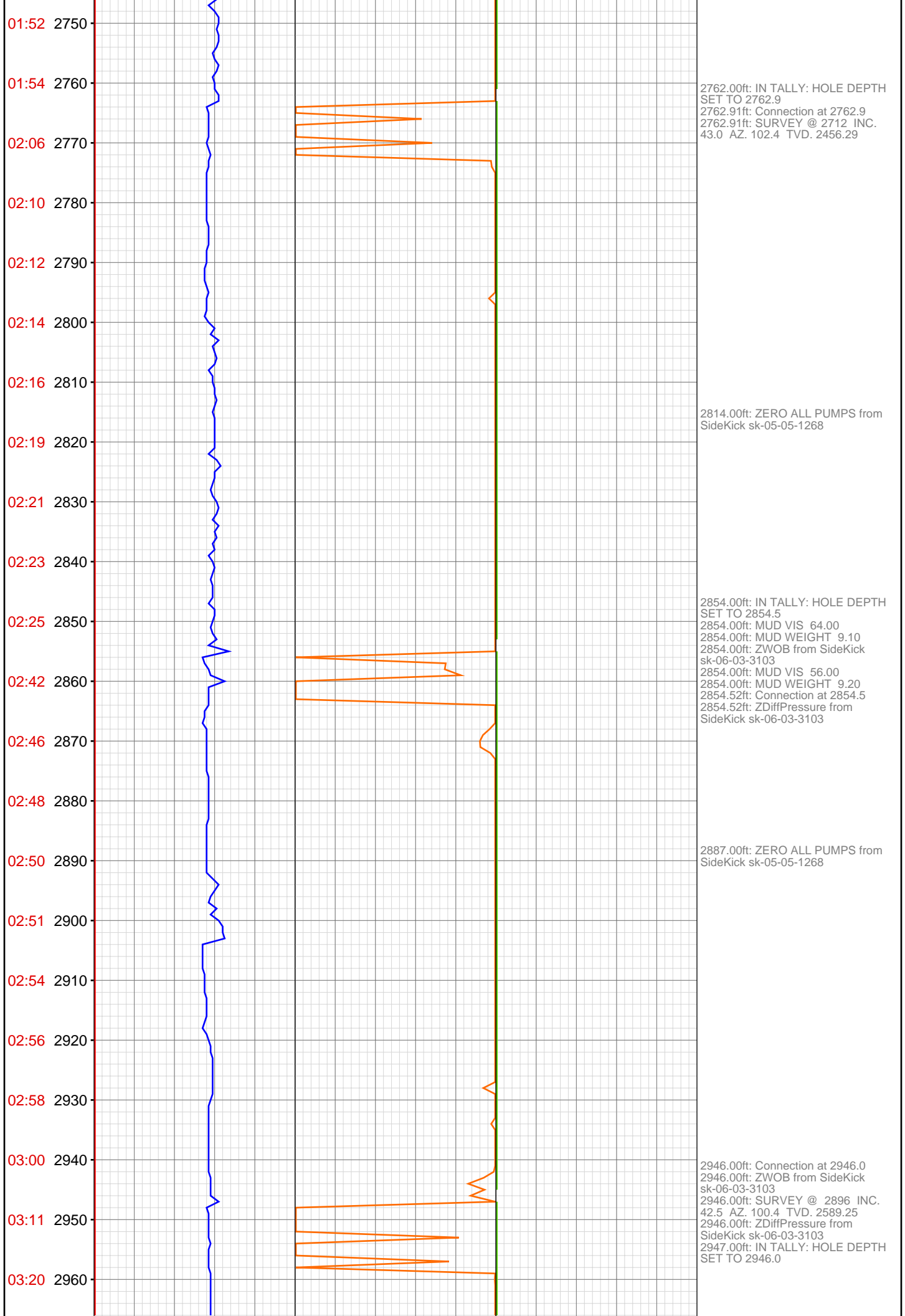


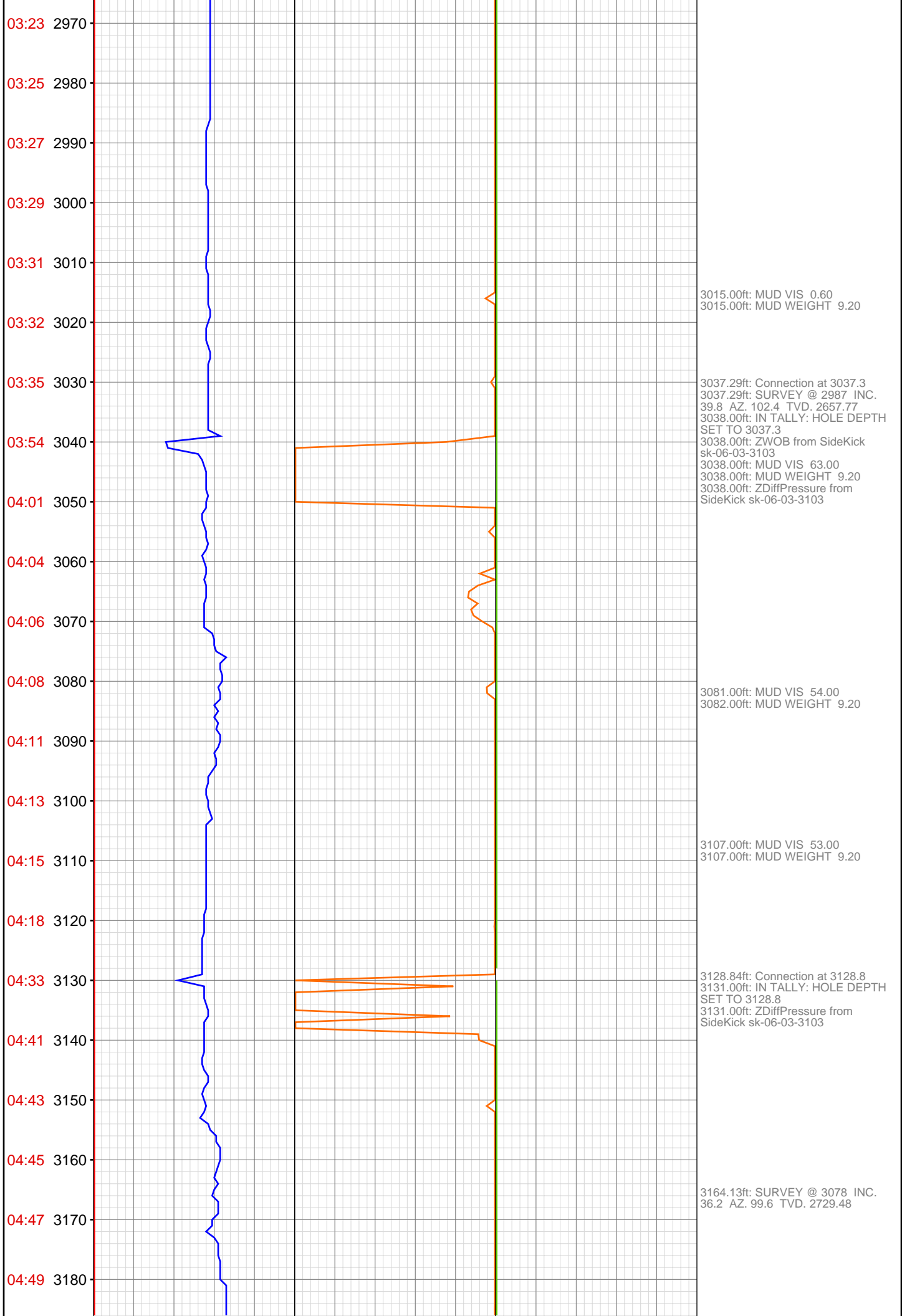
2579.00ft: IN TALLY: HOLE DEPTH  
SET TO 2579.7  
2579.00ft: ZWOB from SideKick  
sk-06-03-3103  
2579.00ft: ZDiffPressure from  
SideKick sk-06-03-3103  
2579.70ft: Connection at 2579.7  
2579.70ft: SURVEY @ 2529 INC.  
43.3 AZ. 101.3 TVD. 2321.52

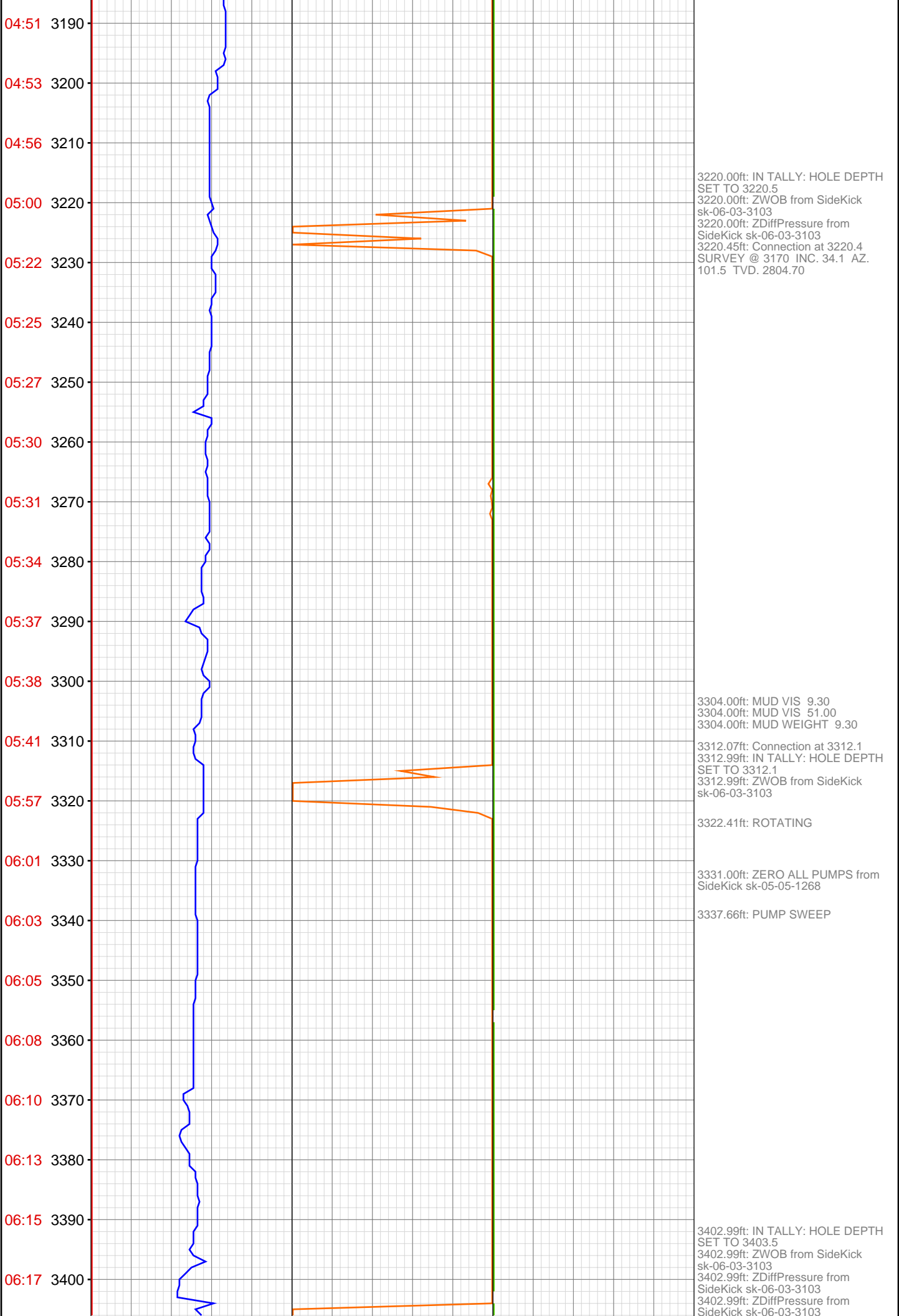
2626.00ft: 008TGAS-Check dryer  
cable (rig air)

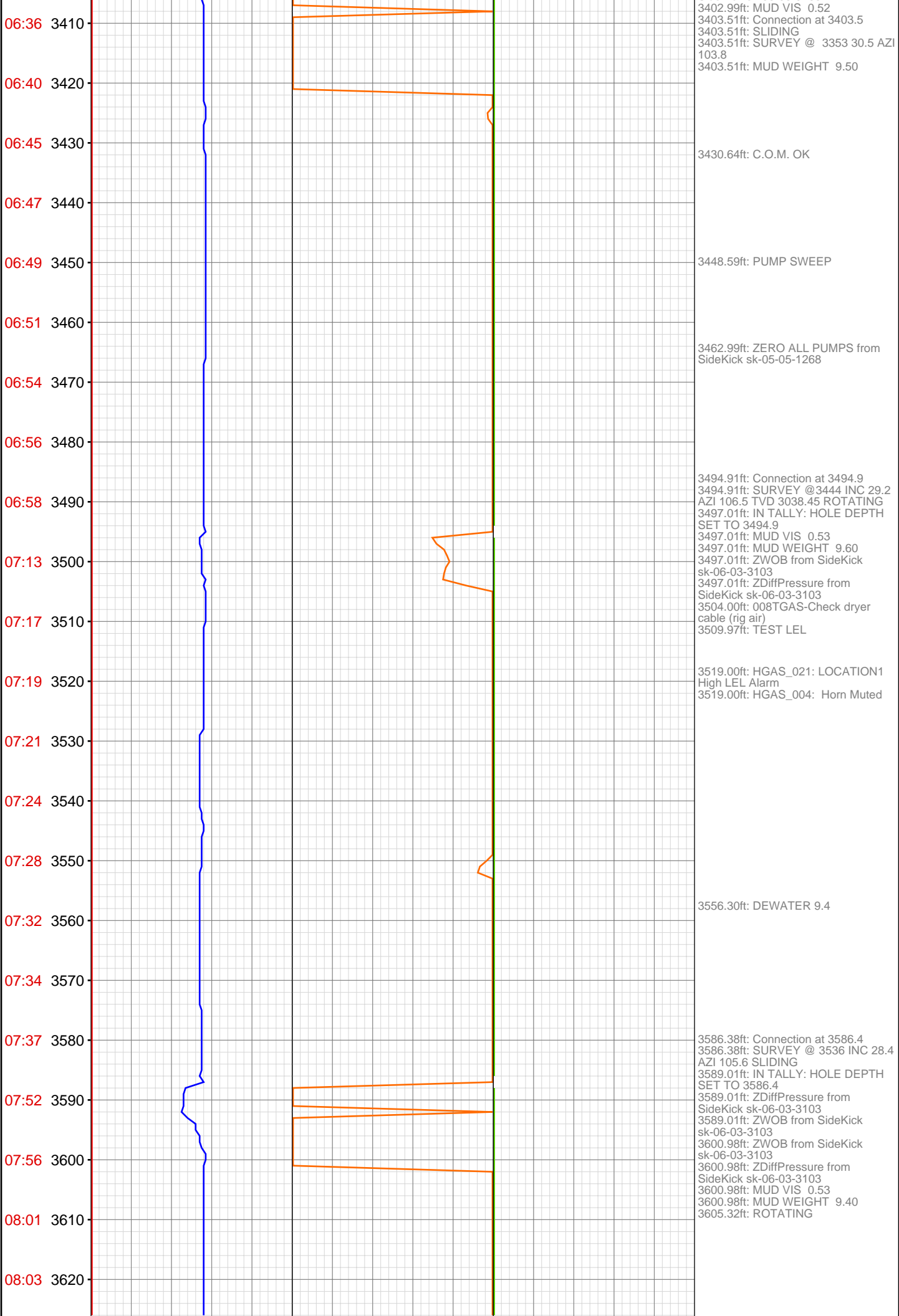
2671.00ft: MUD VIS 54.00  
2671.00ft: MUD WEIGHT 8.90  
2671.32ft: IN TALLY: HOLE DEPTH  
SET TO 2671.3  
2671.32ft: Connection at 2671.3  
2671.32ft: SURVEY @ 2621 INC.  
42.0 AZ. 99.1 TVD. 2389.19

2703.00ft: ZERO ALL PUMPS from  
SideKick sk-05-05-1268

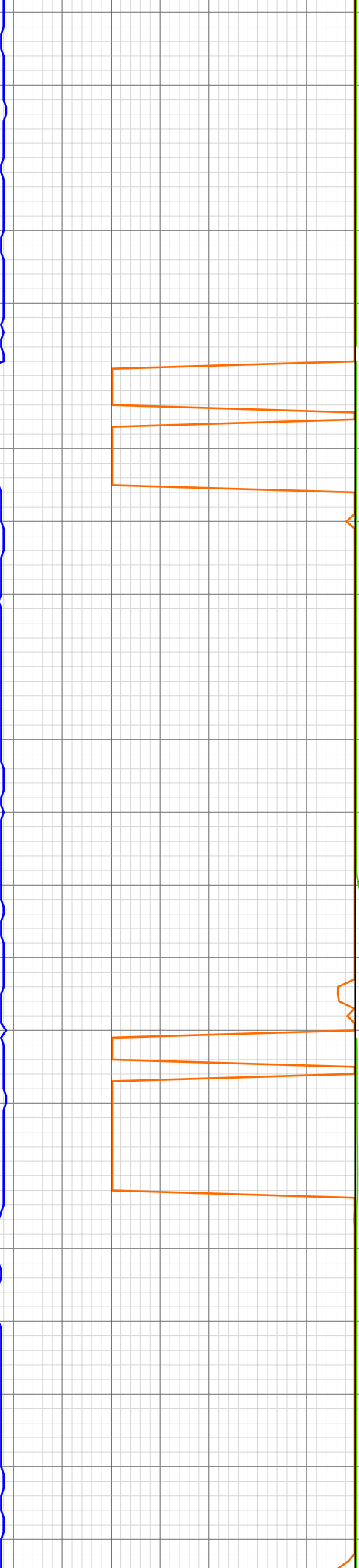






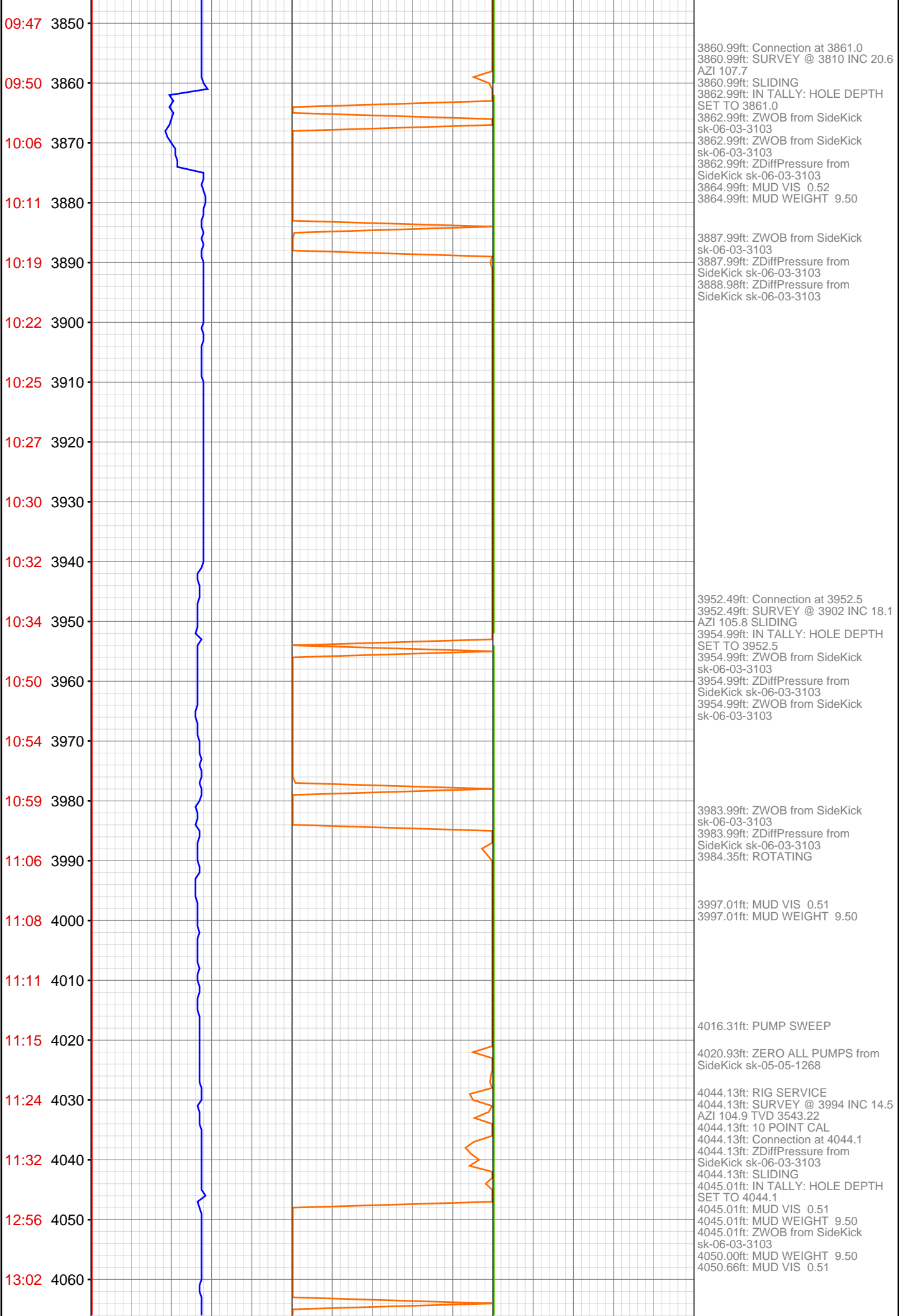


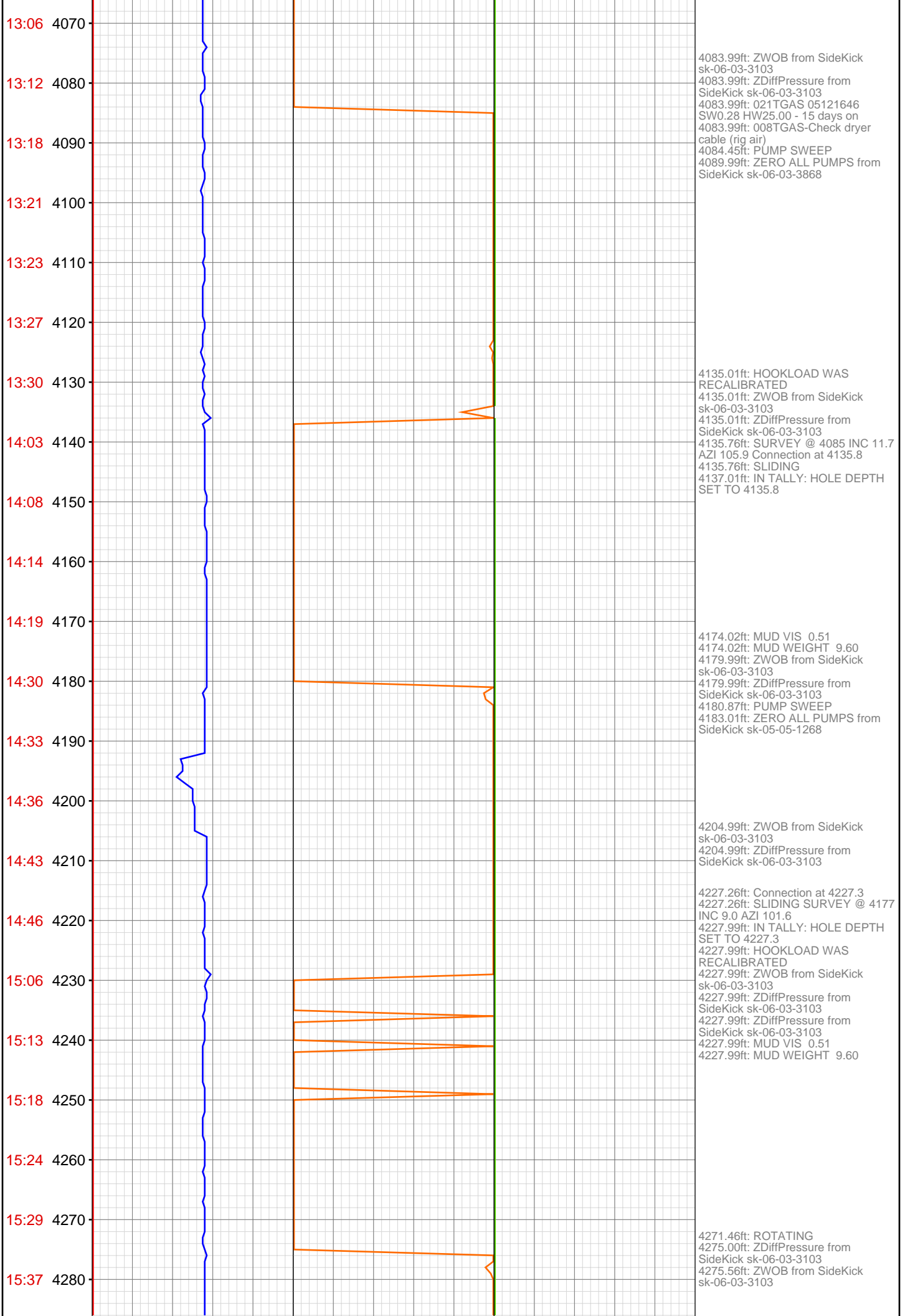
08:05 3630  
08:08 3640  
08:10 3650  
08:12 3660  
08:14 3670  
08:32 3680  
08:37 3690  
08:43 3700  
08:46 3710  
08:49 3720  
08:53 3730  
08:55 3740  
08:57 3750  
09:00 3760  
09:20 3770  
09:26 3780  
09:31 3790  
09:36 3800  
09:38 3810  
09:40 3820  
09:43 3830  
09:45 3840



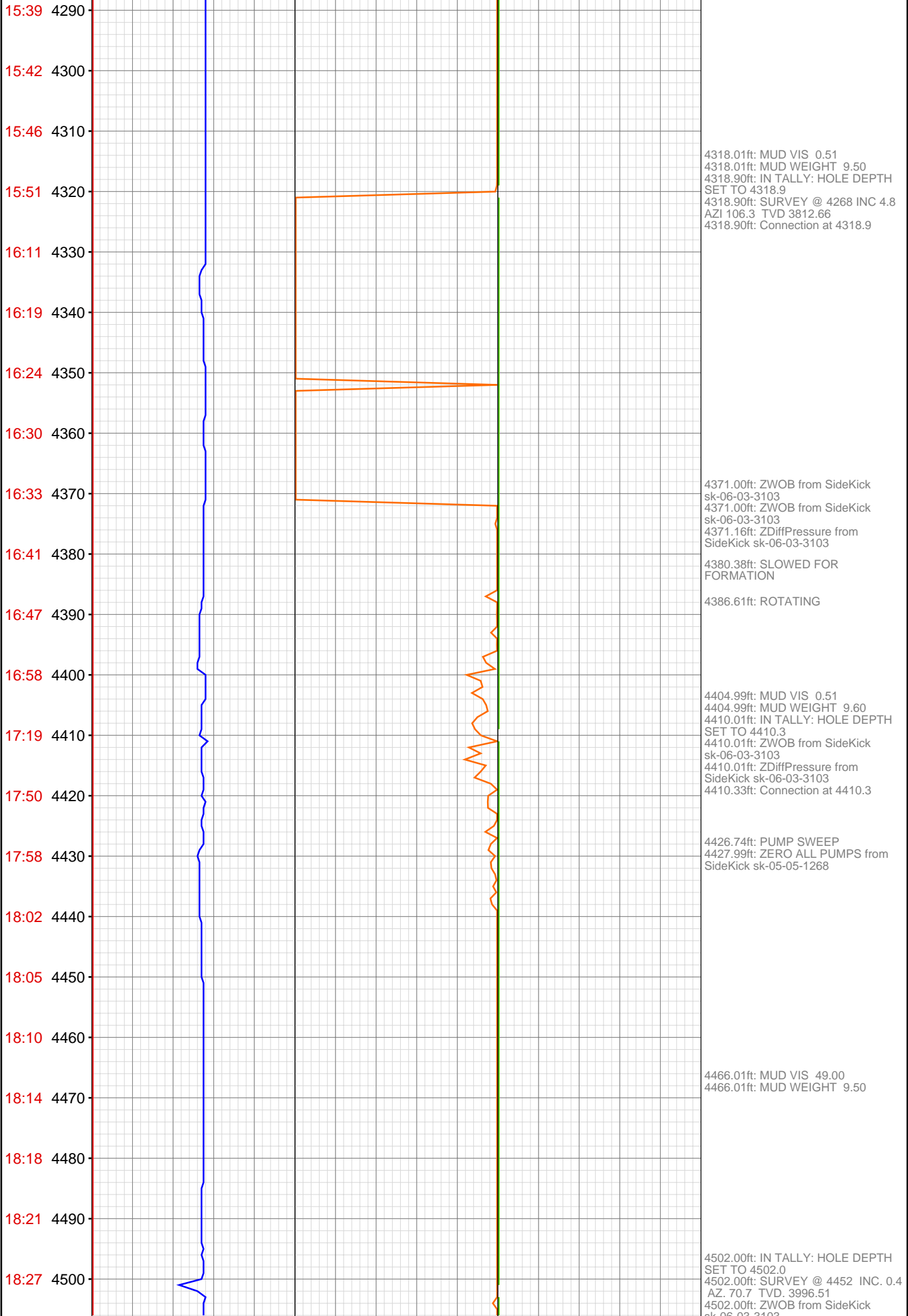
3677.00ft: IN TALLY: HOLE DEPTH  
SET TO 3677.9  
3677.00ft: ZWOB from SideKick  
sk-06-03-3103  
3677.00ft: ZDiffPressure from  
SideKick sk-06-03-3103  
3677.92ft: Connection at 3677.9  
3677.92ft: SLIDING  
3677.92ft: SURVEY @ 3627 INC 25.9  
AZI 107.1  
3677.99ft: ZDiffPressure from  
SideKick sk-06-03-3103  
3695.01ft: ZWOB from SideKick  
sk-06-03-3103  
3695.01ft: ZDiffPressure from  
SideKick sk-06-03-3103  
3695.60ft: ROTATING  
3696.00ft: PUMP SWEEP  
3699.02ft: ZERO ALL PUMPS from  
SideKick sk-05-05-1268

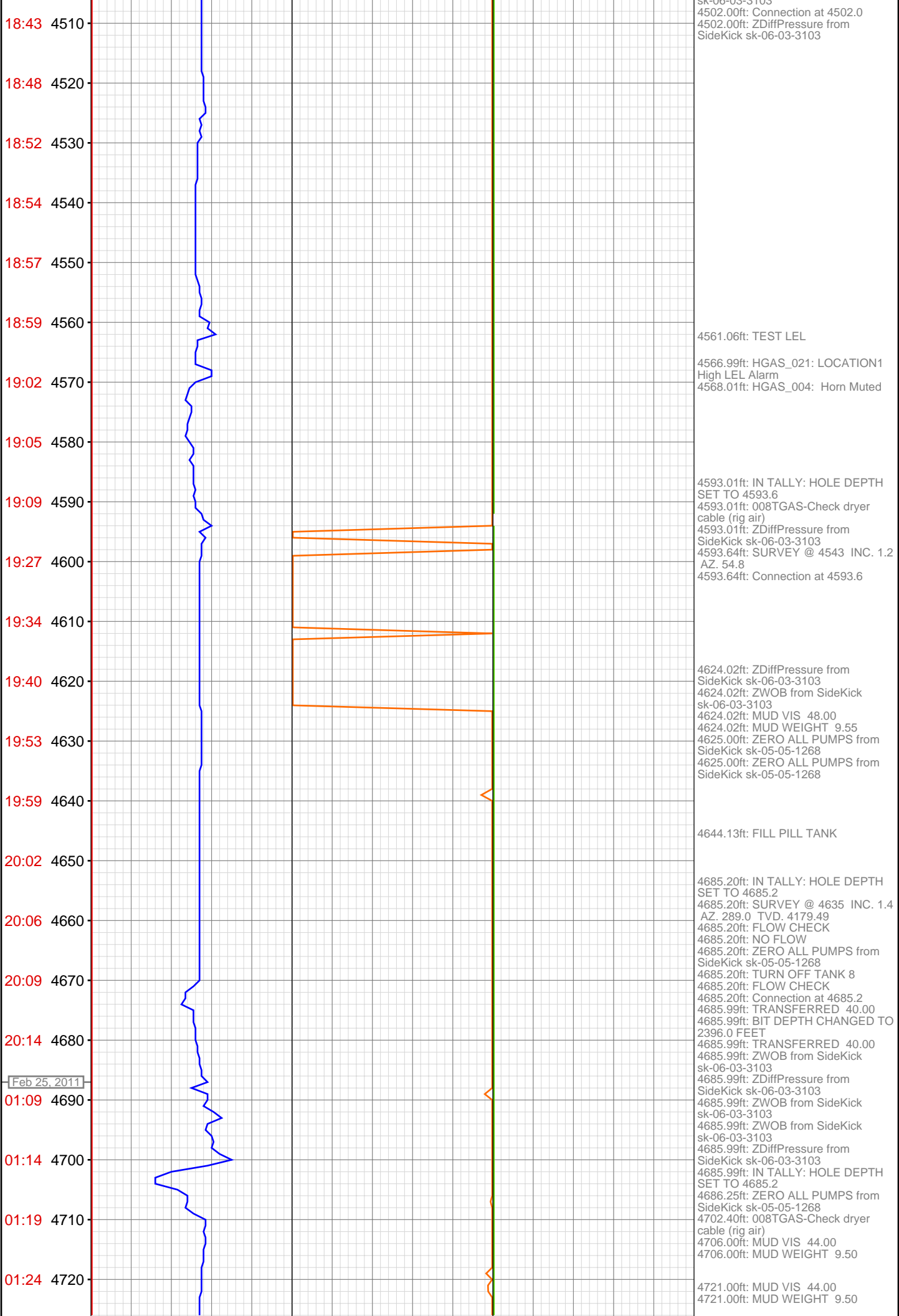
3769.36ft: Connection at 3769.4  
3769.36ft: SURVEY @ 3719 INC 23.2  
AZI 109.4  
3769.36ft: SLIDING  
3772.01ft: IN TALLY: HOLE DEPTH  
SET TO 3769.4  
3772.01ft: MUD VIS 0.52  
3772.01ft: MUD WEIGHT 9.40  
3772.01ft: ZWOB from SideKick  
sk-06-03-3103  
3772.01ft: ZDiffPressure from  
SideKick sk-06-03-3103  
3791.99ft: ZWOB from SideKick  
sk-06-03-3103  
3791.99ft: ZDiffPressure from  
SideKick sk-06-03-3103  
3792.59ft: ROTATING  
3792.88ft: PUMP SWEEP  
3798.00ft: ZERO ALL PUMPS from  
SideKick sk-05-05-1268



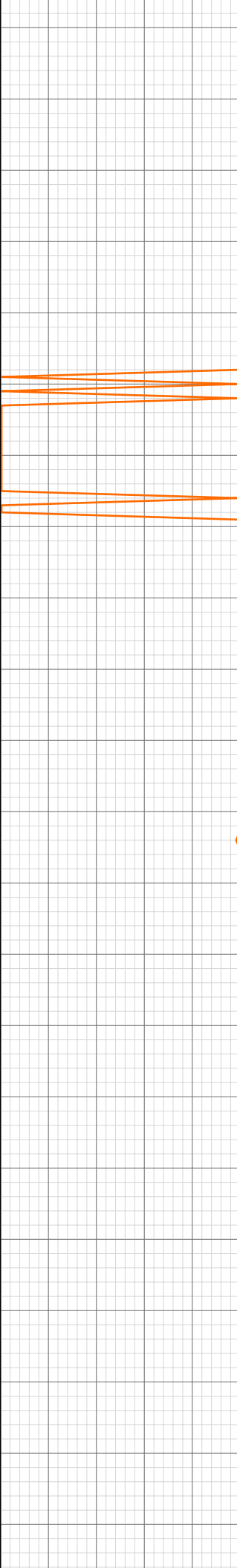




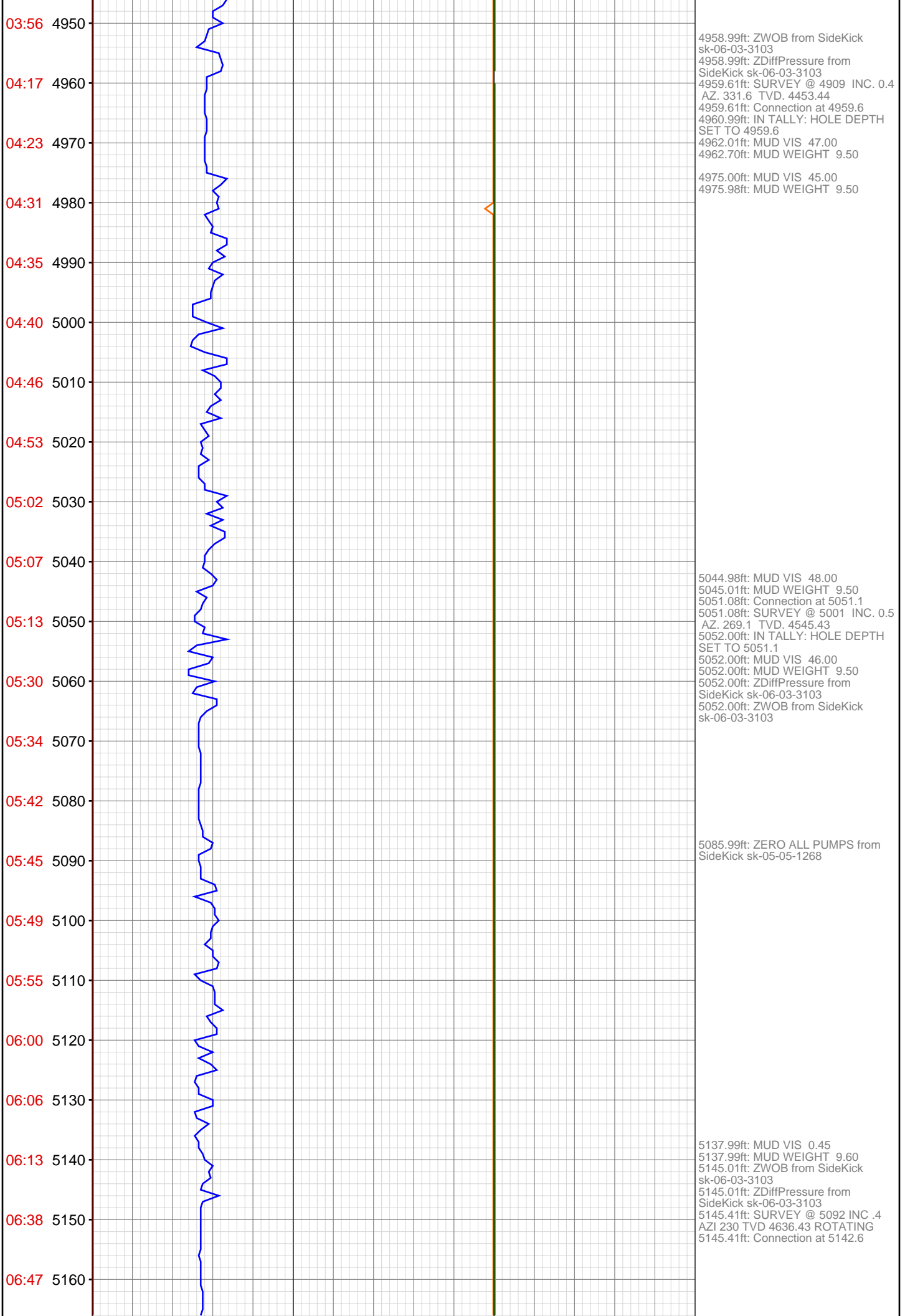


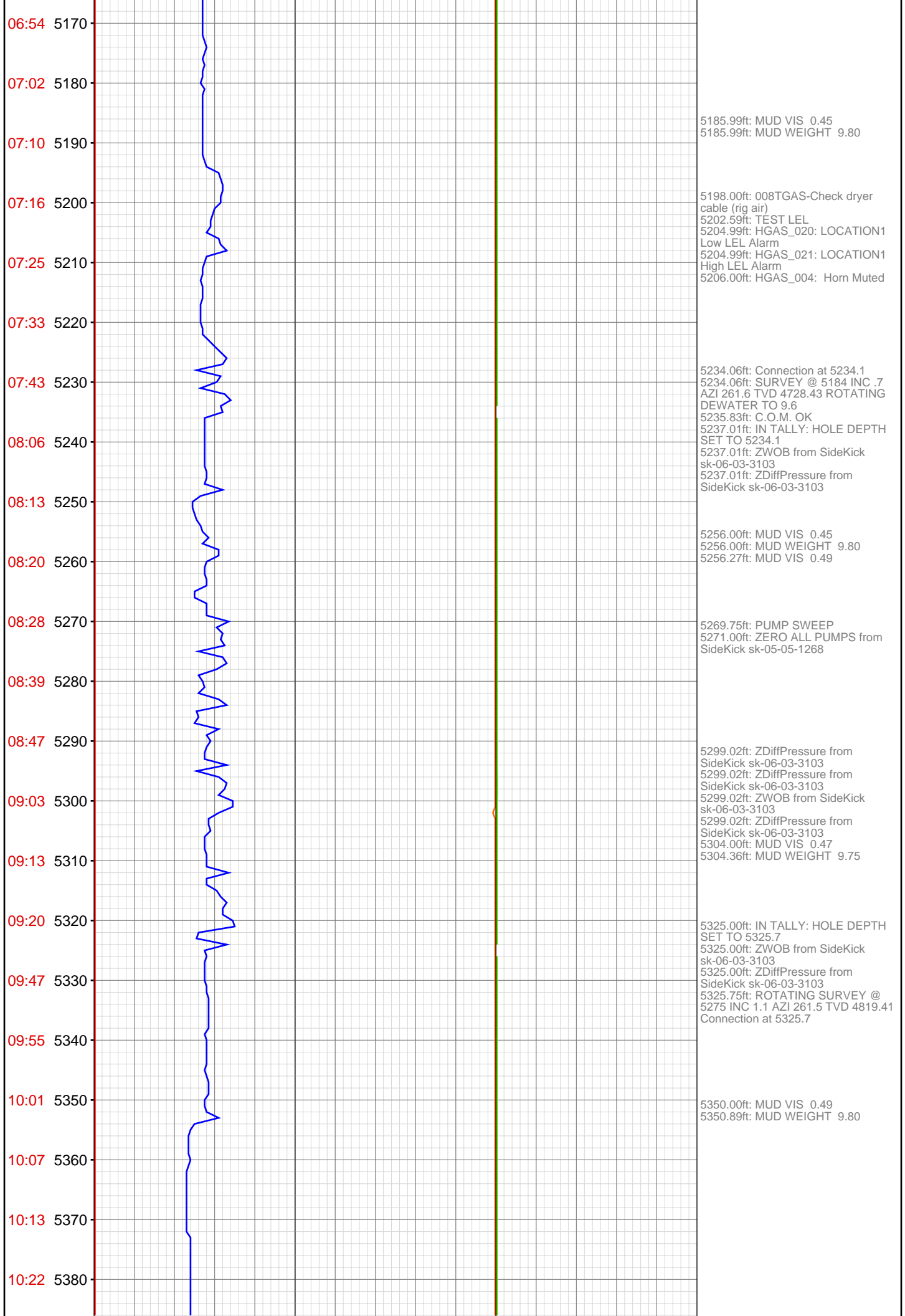


01:31 4730  
01:35 4740  
01:40 4750  
01:44 4760  
01:49 4770  
02:05 4780  
02:15 4790  
02:29 4800  
02:33 4810  
02:38 4820  
02:41 4830  
02:47 4840  
02:52 4850  
02:59 4860  
03:06 4870  
03:25 4880  
03:31 4890  
03:33 4900  
03:37 4910  
03:40 4920  
03:45 4930  
03:51 4940



4766.04ft: TURNED TANK 8 ON  
4776.57ft: Connection at 4776.6  
SURVEY @ 4726 INC. 1.8 AZ.  
276.1 TVD. 4270.45  
4777.00ft: IN TALLY: HOLE DEPTH  
SET TO 4776.6  
4777.00ft: ZDiffPressure from  
SideKick sk-06-03-3103  
4777.43ft: SLIDING  
4798.00ft: ZWOB from SideKick  
sk-06-03-3103  
4798.00ft: ZDiffPressure from  
SideKick sk-06-03-3103  
4798.00ft: MUD VIS 47.00  
4798.85ft: MUD WEIGHT 9.50  
4818.01ft: MUD VIS 48.00  
4818.01ft: MUD WEIGHT 9.50  
4868.01ft: IN TALLY: HOLE DEPTH  
SET TO 4868.0  
4868.01ft: ZDiffPressure from  
SideKick sk-06-03-3103  
4868.01ft: ZWOB from SideKick  
sk-06-03-3103  
4868.04ft: SURVEY @ 4818 INC. 0.3  
AZ. 359.3 TVD. 4362.44  
4868.04ft: Connection at 4868.0  
4874.02ft: ZERO ALL PUMPS from  
SideKick sk-05-05-1268  
4875.98ft: MUD VIS 49.00  
4876.08ft: MUD WEIGHT 9.50





10:28 5390  
10:33 5400  
10:41 5410  
11:04 5420  
11:15 5430  
11:25 5440  
11:30 5450  
11:39 5460  
11:49 5470  
12:01 5480  
12:14 5490  
12:23 5500  
12:53 5510  
13:09 5520  
13:34 5530  
13:38 5540  
13:44 5550  
13:48 5560  
13:53 5570  
14:00 5580  
14:11 5590  
14:19 5600



5416.99ft: IN TALLY: HOLE DEPTH  
SET TO 5417.1  
5416.99ft: MUD VIS 0.52  
5416.99ft: MUD WEIGHT 9.80  
5416.99ft: ZWOB from SideKick  
sk-06-03-3103  
5417.95ft: SURVEY @ 5367 INC 1.5  
AZI 251.1 TVD 4911.39 ROTATING  
Connection at 5417.1  
5417.95ft: ZDiffPressure from  
SideKick sk-06-03-3103  
5418.01ft: ZERO ALL PUMPS from  
SideKick sk-05-05-1268

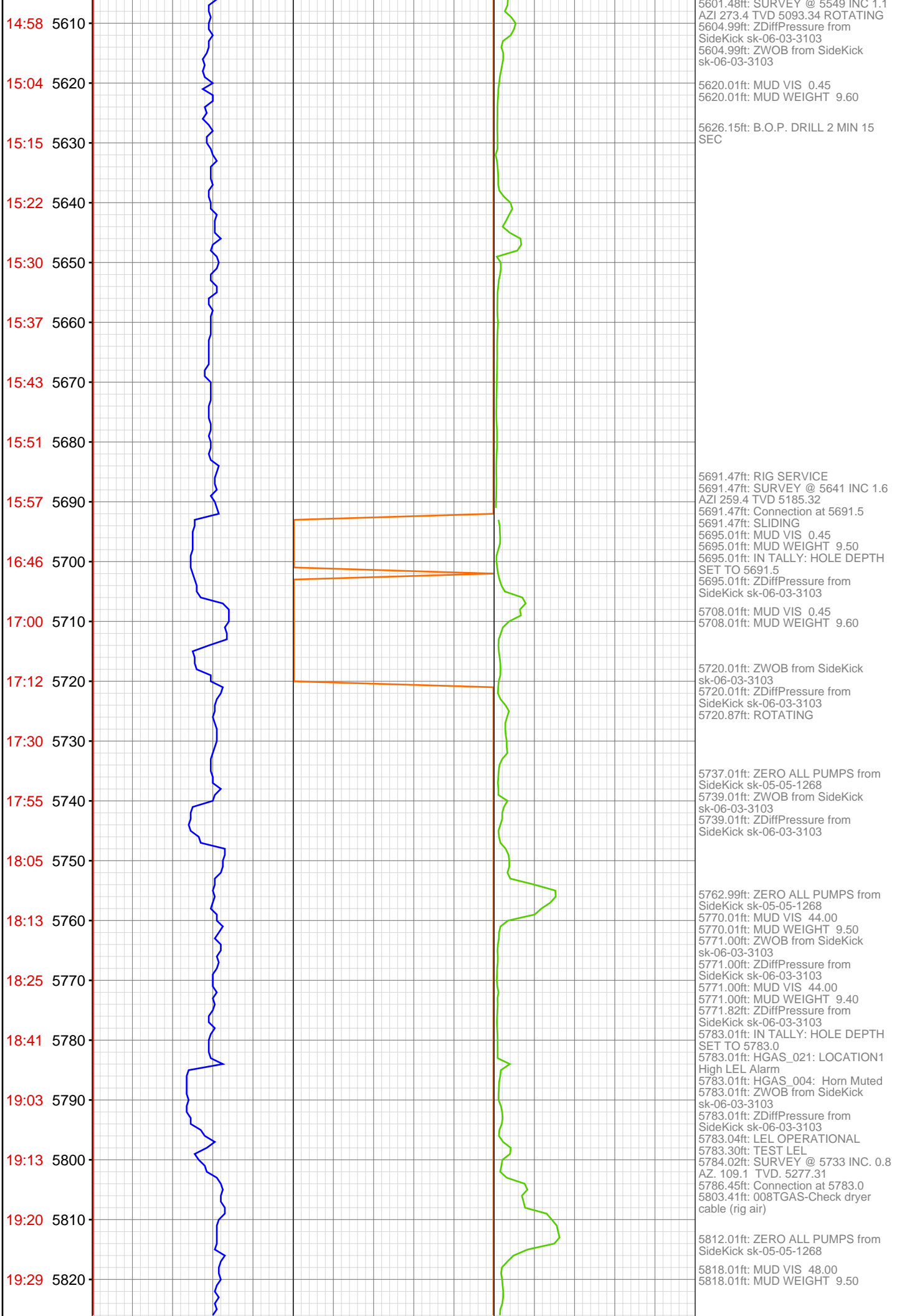
5436.35ft: PUMP SWEEP  
5439.01ft: ZERO ALL PUMPS from  
SideKick sk-05-05-1268

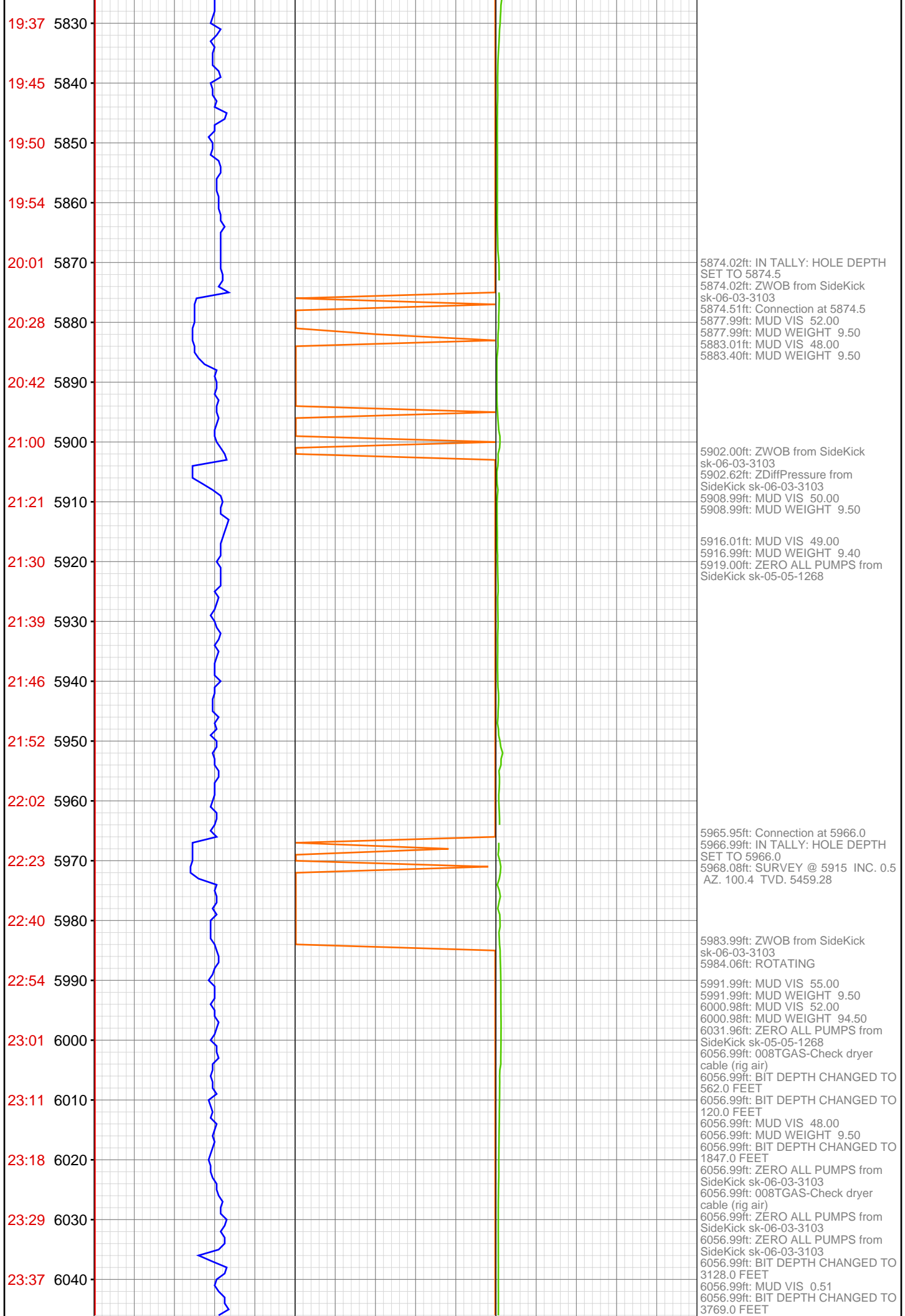
5479.99ft: MUD VIS 0.52  
5479.99ft: MUD WEIGHT 9.90

5508.56ft: SURVEY @ 5458 INC 1.4  
AZI 251.3 TVD 5002.36  
5508.56ft: Connection at 5508.6  
5508.56ft: SLIDING  
5510.99ft: IN TALLY: HOLE DEPTH  
SET TO 5508.6  
5510.99ft: ZDiffPressure from  
SideKick sk-06-03-3103  
5512.99ft: MUD VIS 0.45  
5512.99ft: MUD WEIGHT 9.70  
5522.01ft: 021TGAS 05121646  
SW0.28 HW25.00 - 16 days on  
5523.00ft: 008TGAS-Check dryer  
cable (rig air)  
5527.00ft: ZWOB from DHC  
5527.00ft: ZDIFF from DHC  
5527.82ft: ROTATING

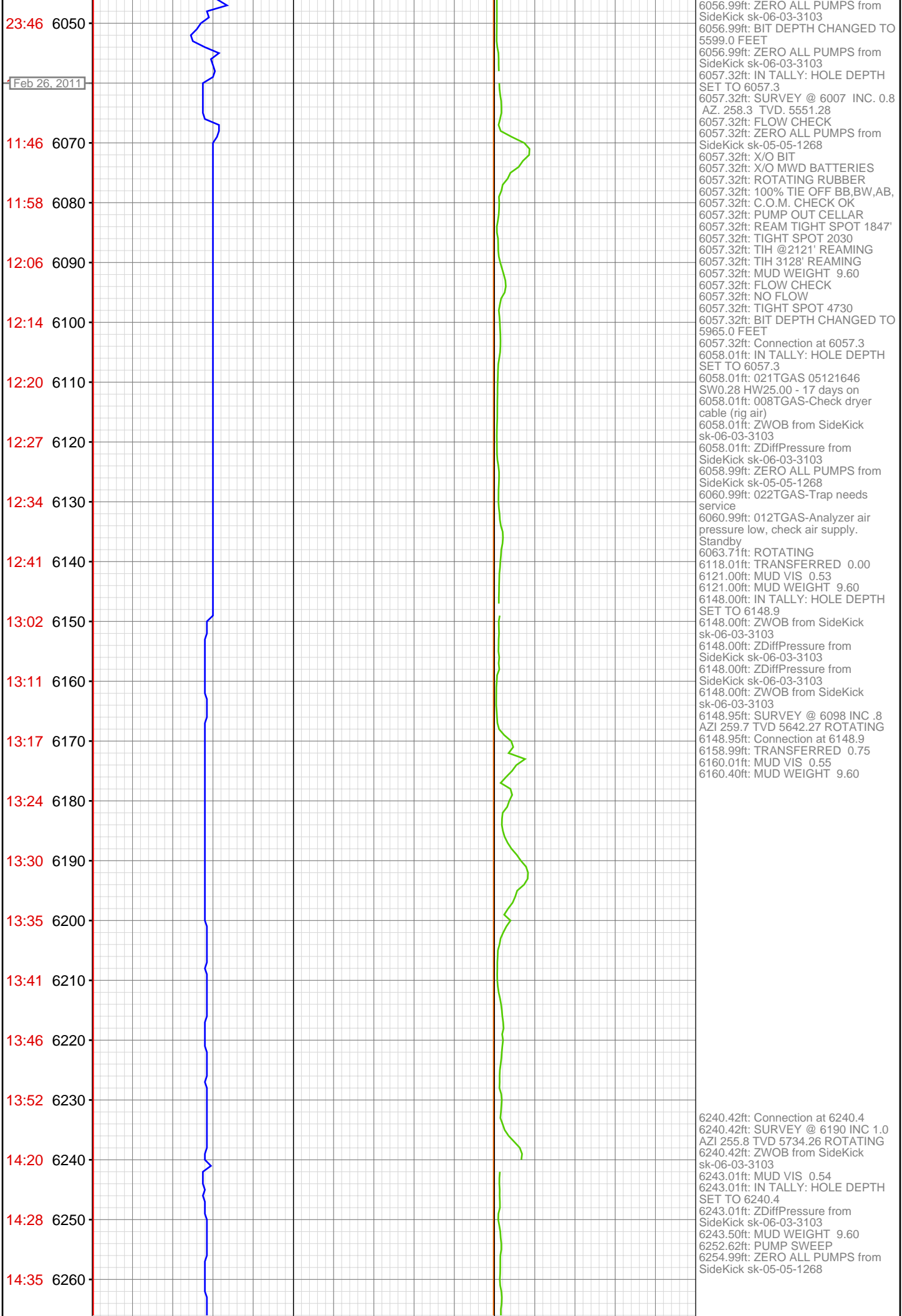
5581.99ft: MUD VIS 0.46  
5581.99ft: MUD WEIGHT 9.60  
5584.42ft: PUMP SWEEP  
5587.01ft: ZERO ALL PUMPS from  
SideKick sk-05-05-1268

5600.00ft: IN TALLY: HOLE DEPTH  
SET TO 5600.0  
5600.98ft: ZWOB from SideKick  
sk-06-03-3103  
5600.98ft: ZDiffPressure from  
SideKick sk-06-03-3103  
5601.48ft: Connection at 5600.0









14:41 6270  
14:48 6280  
14:53 6290  
14:57 6300  
15:03 6310  
15:08 6320  
15:13 6330  
15:35 6340  
15:40 6350  
15:46 6360  
15:52 6370  
16:00 6380  
16:06 6390  
16:12 6400  
16:20 6410  
16:25 6420  
16:58 6430  
17:03 6440  
17:08 6450  
17:13 6460  
17:17 6470  
17:22 6480



6302.99ft: MUD VIS 0.56  
6302.99ft: MUD WEIGHT 9.60

6331.89ft: Connection at 6331.9  
6331.89ft: SURVEY @ 6281 INC 1.5  
AZI 251.1 TVD 5825.24 ROTATING  
6331.99ft: IN TALLY: HOLE DEPTH  
SET TO 6331.9  
6331.99ft: ZWOB from SideKick  
sk-06-03-3103  
6331.99ft: ZDiffPressure from  
SideKick sk-06-03-3103  
  
6344.29ft: PUMP SWEEP  
6347.01ft: ZERO ALL PUMPS from  
SideKick sk-05-05-1268

6381.00ft: MUD WEIGHT 9.70  
6381.53ft: MUD VIS 0.56

6423.23ft: RIG SERVICE  
6423.23ft: Connection at 6423.2  
6423.23ft: SURVEY @ 6373 INC 1.5  
AZI 261.6 TVD 5917.21  
6423.23ft: ROTATING  
6424.02ft: IN TALLY: HOLE DEPTH  
SET TO 6423.2  
6424.02ft: HOOKLOAD WAS  
RECALIBRATED  
6424.02ft: ZWOB from SideKick  
sk-06-03-3103  
6424.02ft: ZDiffPressure from  
SideKick sk-06-03-3103  
6424.02ft: ZDiffPressure from  
SideKick sk-06-03-3103  
6433.01ft: MUD VIS 0.58  
6433.01ft: MUD WEIGHT 9.80

