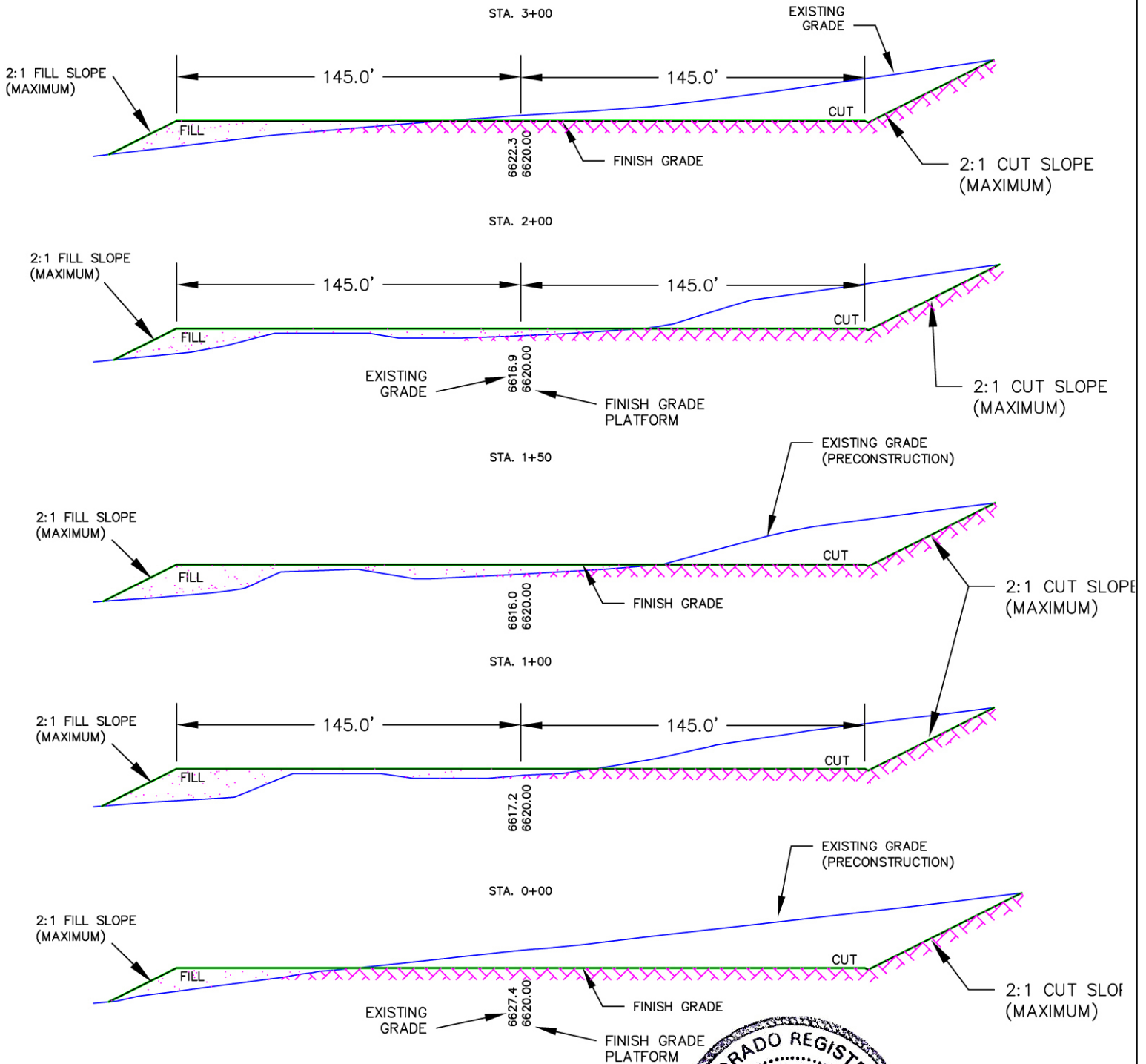


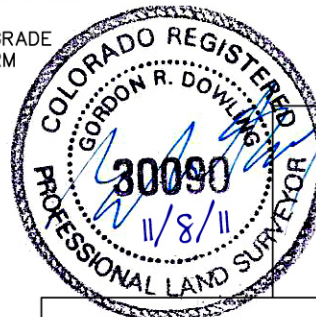
**PRITLAW PARTNERS, LTD. 32-09**  
**CONSTRUCTION LAYOUT CROSS SECTIONS**  
**FOR WOLF MOUNTAIN RANCH**  
**NW¼NE¼ SECTION 9, T6N, R87W, 6TH P.M.**  
**ROUTT COUNTY, COLORADO**

APPROXIMATE ACREAGE  
WELL SITE DISTURBANCE = ±3.44 ACRES  
ACCESS ROAD DISTURBANCE = ±0.12 ACRES  
TOTAL ±3.56 ACRES



**NOTES:**

- 1) WELL LOCATED IN THE NW¼ NE¼ OF SECTION 9, TOWNSHIP 6 NORTH, RANGE 87 WEST, 6TH P.M., ROUTT COUNTY, COLORADO. 1335.6 FNL AND 2385.1 FEL.
- 2) TOPSOIL NOT TO BE STRIPPED BELOW FINISHED GRADE OF WELL PAD SUBSTRUCTURE.
- 3) 6" TOPSOIL STRIPPING = 5,380 CY, CUT = 19,800 CY, FILL = 11030 CY
- 4) 8,800 CY OF EXCESS CUT MATERIAL (AFTER INTERIM RECLAMATION)



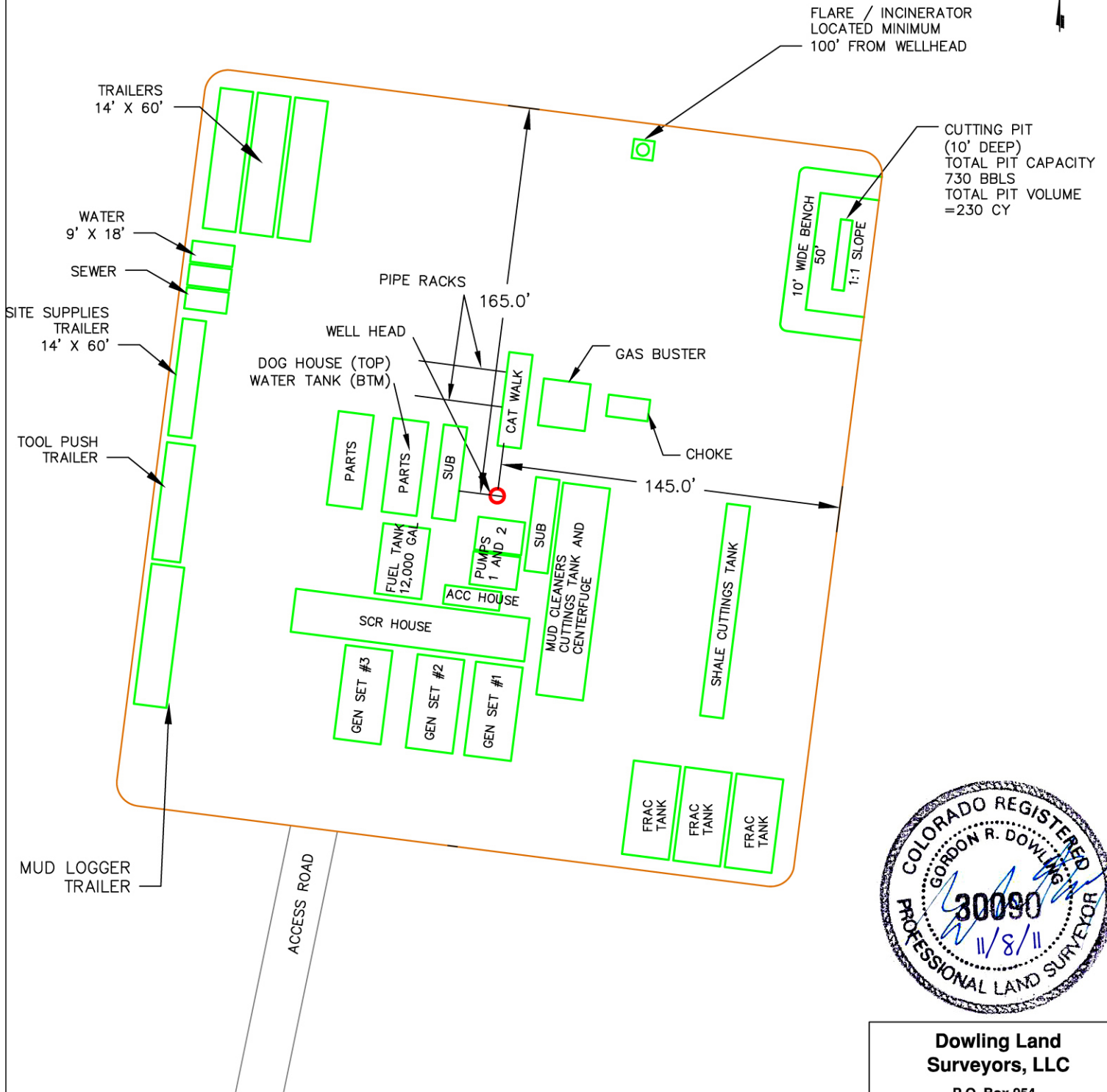
**Dowling Land Surveyors, LLC**  
P.O. Box 954  
Hayden, Colorado 81639  
(970)-276-3613  
dowling@plotz.biz

**Horizontal Scale**  
1" = 60'

**FIGURE 2**

DATE: 11-3-2011  
JOB NO. 1208-001

**PRITLAW PARTNERS, LTD. 32-09**  
**CONSTRUCTION LAYOUT FOR**  
**WOLF MOUNTAIN RANCH**  
**NW¼NE¼ SECTION 9, T6N, R87W, 6TH P.M.**  
**ROUTT COUNTY, COLORADO**



**Dowling Land  
 Surveyors, LLC**

P.O. Box 954  
 Hayden, Colorado 81639  
 (970)-276-3613  
 dowling@plotz.biz

**NOTES:**

1) WELL LOCATED IN THE NW¼ NE¼ OF SECTION 9, TOWNSHIP 6 NORTH, RANGE 87 WEST, 6TH P.M., ROUTT COUNTY, COLORADO. 1335.6 FNL AND 2385.1 FEL.

**Horizontal Scale**  
 1" = 60'

**FIGURE 3**

DATE: 11-2-2011  
 JOB NO. 1208-001