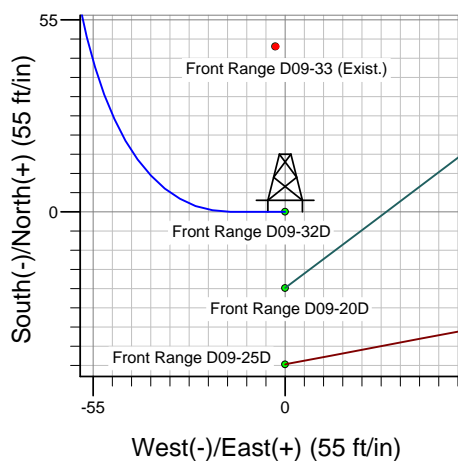
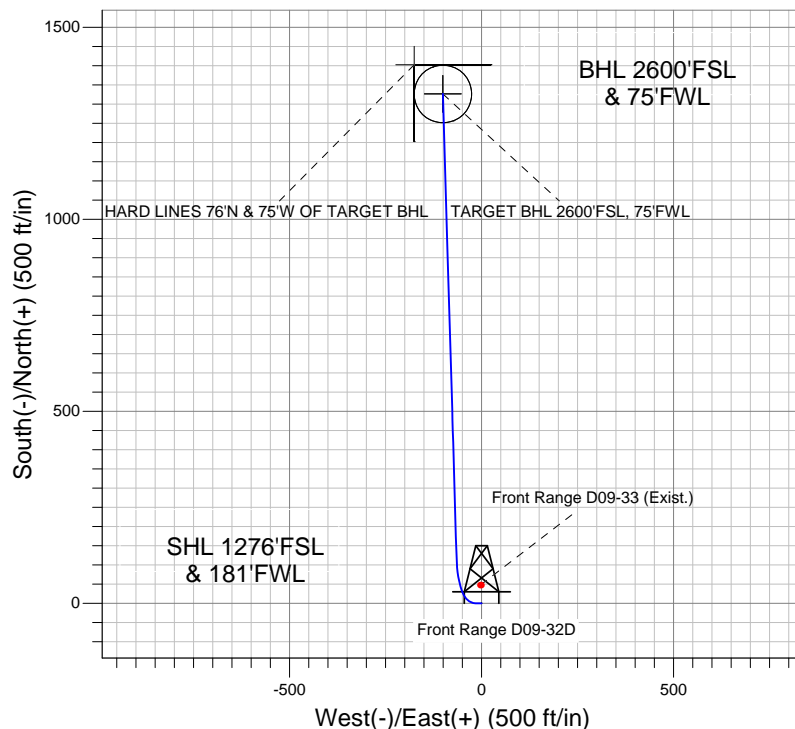
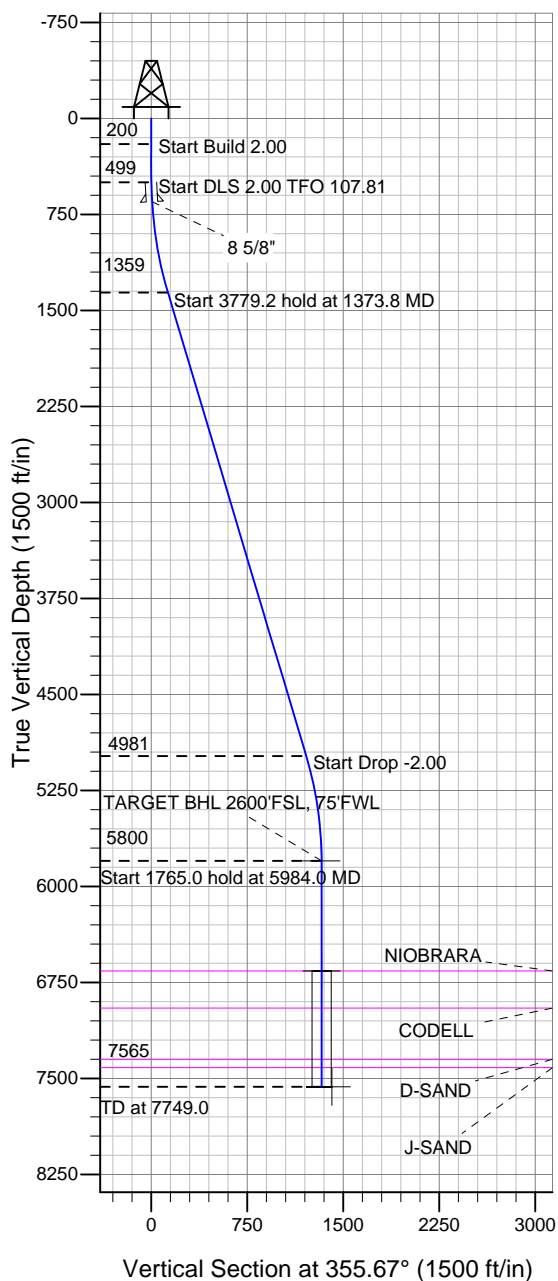


Well Name: Front Range D09-32D

Surface Location: Front Range D09-25D Pad Sec.9-T3N-R64W
North American Datum 1983, US State Plane 1983 Colorado Northern Zone
Ground Elevation: 4737.0

| +N/-S | +E/-W | Northing | Easting | Latitude | Longitude | Slot |
|-------|-------|--------------------|--------------------------------------|-----------|-------------|------|
| 0.0 | 0.0 | 1330258.80 | 3261065.10 | 40.236180 | -104.564880 | |
| | | Original Well Elev | WELL @ 4750.0ft (Original Well Elev) | | | |

NOBLE ENERGY INC WELD COUNTY CO



Front Range D09-25D Pad Sec.9-T3N-R64W
Front Range D09-32D
Noble Front Range D09-32D Plan #1 (2-06-12)
11:52, February 08 2012



Azimuths to True North
Magnetic North: 8.66°
Magnetic Field
Strength: 52999.4snT
Dip Angle: 66.93°
Date: 2/6/2012
Model: IGRF2010

WELLBORE TARGET DETAILS (LAT/LONG)

| Name | TVD | +N/-S | +E/-W | Latitude | Longitude | Shape |
|--------------------------------------|--------|--------|--------|-----------|-------------|-----------------------|
| TARGET BHL 2600'FSL, 75'FWL | 5800.0 | 1326.1 | -100.5 | 40.239820 | -104.565240 | Point |
| TARGET CIRCLE 2600'FSL & 75'FWL | 6660.0 | 1326.1 | -100.5 | 40.239820 | -104.565240 | Circle (Radius: 75.0) |
| HARD LINES 76°N & 75°W OF TARGET BHL | 7565.0 | 1402.1 | -175.5 | 40.240029 | -104.565509 | Polygon |

SECTION DETAILS

| Sec | MD | Inc | Azi | TVD | +N/-S | +E/-W | DLeg | TFace | VSec | Target |
|-----|--------|-------|--------|--------|--------|--------|------|--------|--------|-----------------------------|
| 1 | 0.0 | 0.00 | 0.00 | 0.0 | 0.0 | 0.0 | 0.00 | 0.00 | 0.0 | |
| 2 | 200.0 | 0.00 | 0.00 | 200.0 | 0.0 | 0.0 | 0.00 | 0.00 | 0.0 | |
| 3 | 500.0 | 6.00 | 270.00 | 499.5 | 0.0 | -15.7 | 2.00 | 270.00 | 1.2 | |
| 4 | 1373.8 | 16.62 | 358.32 | 1359.3 | 125.9 | -65.4 | 2.00 | 107.81 | 130.5 | |
| 5 | 5153.0 | 16.62 | 358.32 | 4980.6 | 1206.4 | -97.0 | 0.00 | 0.00 | 1210.3 | |
| 6 | 5984.0 | 0.00 | 0.00 | 5800.0 | 1326.1 | -100.5 | 2.00 | 180.00 | 1329.9 | TARGET BHL 2600'FSL, 75'FWL |
| 7 | 7749.0 | 0.00 | 0.00 | 7565.0 | 1326.1 | -100.5 | 0.00 | 0.00 | 1329.9 | |