

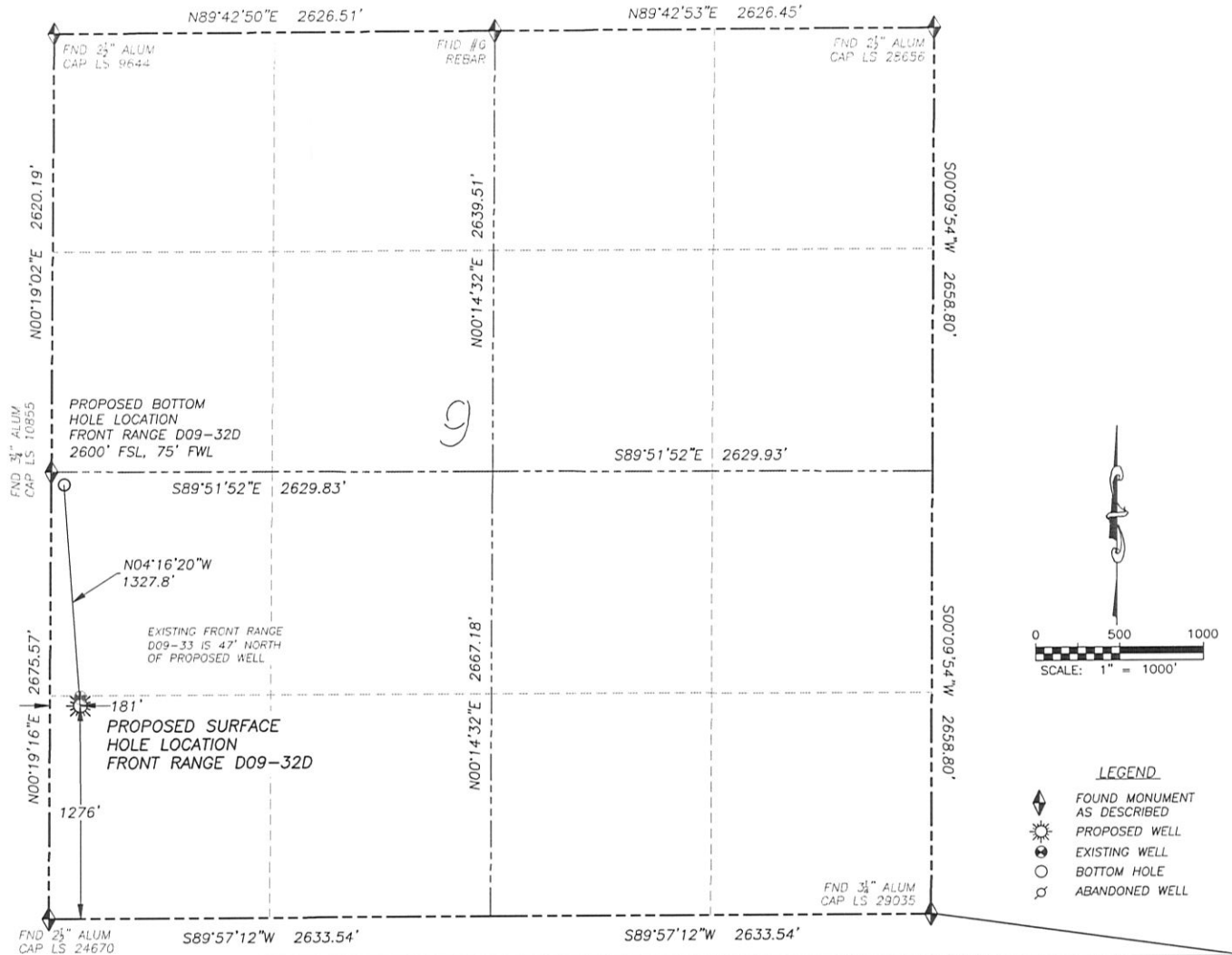
DALEY LAND SURVEYING, INC.

PARKER, CO. 80134

303 953 9841

WELL LOCATION CERTIFICATE FRONT RANGE D09-32D

SECTION 9, TOWNSHIP 3 NORTH, RANGE 64 WEST OF THE 6TH PRINCIPAL MERIDIAN



LEGEND

- ◆ FOUND MONUMENT AS DESCRIBED
- ☼ PROPOSED WELL
- ⊙ EXISTING WELL
- BOTTOM HOLE
- ⊘ ABANDONED WELL

NAD 83 LATITUDE AND LONGITUDE

FRONT RANGE D09-32D

SURFACE HOLE:

LATITUDE: N40.23618°
 LONGITUDE: W104.56488°
 ELEVATION: 4737'
 FOOTAGE: 1276' FSL, 181' FWL
 PDOP: 1.3
 QTR/QTR: SW4/SW4
 PROP LINE: 181'± WEST

BOTTOM HOLE:

LATITUDE: N40.23982°
 LONGITUDE: W104.56524°
 FOOTAGE: 2600' FSL, 75' FWL

NEAREST EXISTING WELL:

FRONT RANGE D09-33 SURFACE HOLE
 LATITUDE: N40.23631°
 LONGITUDE: W104.56489°
 ELEVATION: 4737'
 47' NORTH

IN ACCORDANCE WITH A REQUEST FROM RYAN HAWKINS OF NOBLE ENERGY INC., DALEY LAND SURVEYING, INC. HAS DETERMINED THE SURFACE LOCATION OF THE FRONT RANGE D09-32D WELL TO BE 1276' FSL, 181' FWL, AS MEASURED AT NINETY (90) DEGREES FROM THE SECTION LINES OF SECTION 9, TOWNSHIP 3 NORTH, RANGE 64 WEST OF THE 6TH PRINCIPAL MERIDIAN, WELD COUNTY, COLORADO. THE BOTTOM HOLE LOCATION, PROVIDED BY THE CLIENT, IS TO BE 2600' FSL, 75' FWL.

I HEREBY CERTIFY THAT THIS WELL LOCATION CERTIFICATE WAS PREPARED BY ME OR UNDER MY DIRECT SUPERVISION, THAT THE WORK WAS COMPLETED ON 12/07/2011 FOR AND ON BEHALF OF NOBLE ENERGY, INC., AND THAT THIS MAP DOES NOT REPRESENT A BOUNDARY SURVEY, IT IS NOT A LAND SURVEY PLAT OR AN IMPROVEMENT SURVEY PLAT AND IT IS NOT TO BE RELIED UPON FOR THE ESTABLISHMENT OF FENCE, BUILDING OR OTHER FUTURE IMPROVEMENT LINES.

NOTES:

- 1) BEARINGS FOR THIS MAP ARE ASSUMED AND BASED UPON GPS OBSERVATIONS MADE BETWEEN MONUMENTS LOCATED AT THE SOUTHWEST CORNER AND WEST QUARTER CORNER OF SECTION 9, T.3N., R.64W.
- 2) HORIZONTAL DATUM IS NAD83.
- 3) VERTICAL DATUM IS NAVD88 AND ORIGINATES FROM THE LOCAL C.O.R.S. NETWORK, UTILIZING THE GEOD09 MODEL.
- 4) SEE LOCATION DRAWING FOR VISIBLE IMPROVEMENTS WITHIN 400' OF PROPOSED DISTURBED AREA.
- 5) SURFACE USE: PASTURE.

NOTICE: According to Colorado law you MUST commence any legal action based upon any defect in this W.L.C. within three years after you first discover such defect, in no event may any action based upon any such defect in this W.L.C. be commenced more than ten years from the date of the certification shown herein.



FOR AND ON BEHALF OF
 DALEY LAND SURVEYING INC.,
 Robert Daley, PLS 35597

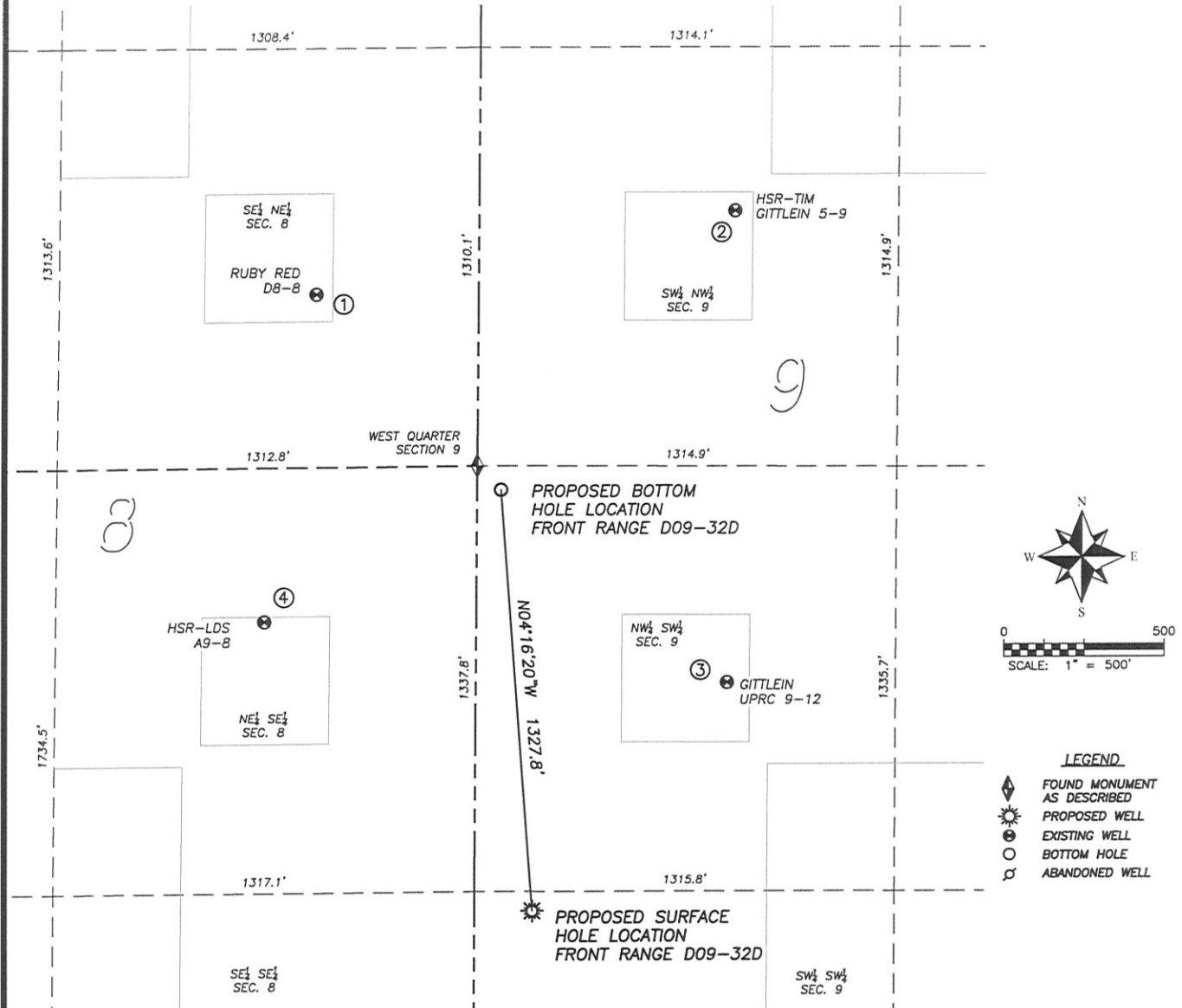
DALEY LAND SURVEYING, INC.

PARKER, CO. 80134

303 953 9841

SITE SKETCH FRONT RANGE D09-32D

SECTION 9, TOWNSHIP 3 NORTH, RANGE 64 WEST OF THE 6TH PRINCIPAL MERIDIAN



①

RUBY RED D8-8
SE/NE SEC. 8
2081' FNL, 507' FEL
842' NW OF PROPOSED
BOTTOM HOLE LOCATION
LAT. N40.24150°
LONG. W104.56731°
EL: 4731'
PDOP 1.4

②

HSR-TIM GITTLEIN 5-9
SW/NW SEC. 9
1826' FNL, 802' FWL
1140' NE OF PROPOSED
BOTTOM HOLE LOCATION
LAT. N40.24221°
LONG. W104.56261°
EL: 4729°
PDOP 1.2

③

GITTLEIN UPRC 9-12
NW/SW SEC. 9
1993' FSL, 787' FWL
933' SE OF PROPOSED
BOTTOM HOLE LOCATION
LAT. N40.23815°
LONG. W104.56270°
EL: 4731°
PDOP 1.4

④

HSR-LDS A9-8
NE/SE SEC. 8
2189' FSL, 662' FEL
847' SW OF PROPOSED
BOTTOM HOLE LOCATION
LAT. N40.23868°
LONG. W104.56788°
EL: 4734°
PDOP 1.6

NOTES:

1. THIS DOES NOT REPRESENT A BOUNDARY SURVEY
2. HORIZONTAL DATUM IS NAD83
3. VERTICAL DATUM IS NAVD88 AND ORIGINATES FROM THE LOCAL C.O.R.S. NETWORK, UTILIZING THE GEOID09 MODEL.