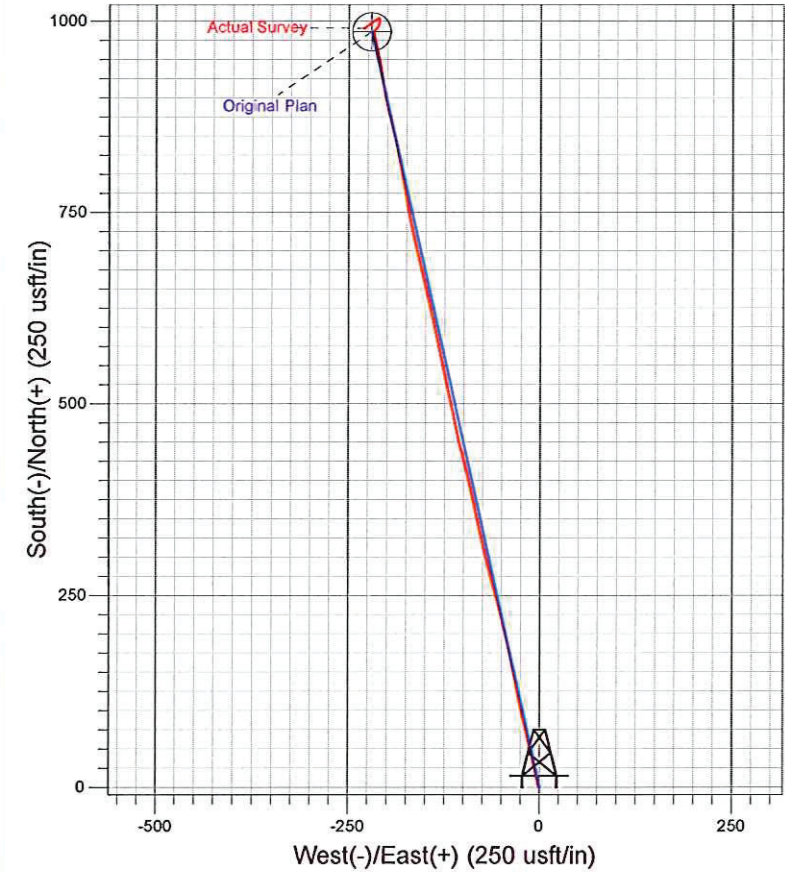
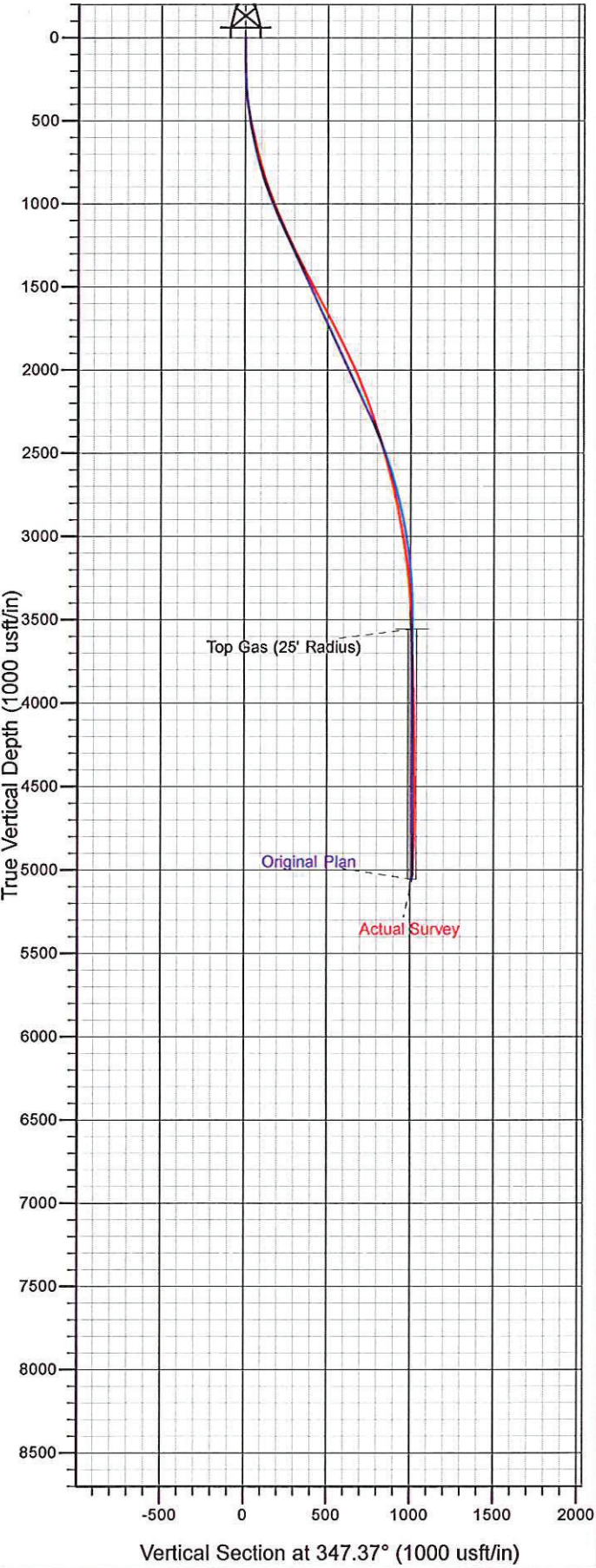





Surface Location: SG 43-27 Pad
North American Datum 1983 , US State Plane 1983 . Colorado Central Zone
Ground Elevation: 5018.00
+N/-S +E/-W Northing Easting Latitude Longitude Slot
0.00 0.00 1583893.70 2268793.20 39° 24' 28.630 N 108° 5' 17.530 W A5
WELL @ 5042.00usft (Original Well Elev)





Azimuths to True North
Magnetic North: 10.34°
Magnetic Field
Strength: 52160.8snT
Dip Angle: 65.64°
Date: 10/26/2011
Model: IGRF2010