

---

**WILLIAMS PRODUCTION RMT INC - EBUS**

---

**SG 342-27  
GRAND VALLEY  
Garfield County , Colorado**

**Cement Surface Casing**  
**27-Oct-2011**

**Post Job Summary**

*The Road to Excellence Starts with Safety*

Sold To #: 300721		Ship To #: 2885728		Quote #:		Sales Order #: 8561995	
Customer: WILLIAMS PRODUCTION RMT INC - EBUS				Customer Rep: Geary, Scott			
Well Name: SG		Well #: 342-27		API/UWI #: 05-045-20674			
Field: GRAND VALLEY		City (SAP): PARACHUTE		County/Parish: Garfield		State: Colorado	
Lat: N 39.408 deg. OR N 39 deg. 24 min. 28.631 secs.				Long: E 108.088 deg. OR E 108 deg. 5 min. 17.531 secs.			
Contractor: H&P Drilling		Rig/Platform Name/Num: H&P 278					
Job Purpose: Cement Surface Casing							
Well Type: Development Well				Job Type: Cement Surface Casing			
Sales Person: KOHL, KYLE		Srv Supervisor: MAGERS, MICHAEL		MBU ID Emp #: 339439			
Job Personnel							
HES Emp Name	Exp Hrs	Emp #	HES Emp Name	Exp Hrs	Emp #	HES Emp Name	Exp Hrs
KUKUS, CHRISTOPHER A	6	413952	MAGERS, MICHAEL Gerard	6	339439	SINCLAIR, DAN J	6
WOLFE, JON P	6	485217					
Equipment							
HES Unit #	Distance-1 way	HES Unit #	Distance-1 way	HES Unit #	Distance-1 way	HES Unit #	Distance-1 way
10025118	60 mile	10248057	60 mile	10741259	60 mile	10872429	60 mile
11259886	60 mile	11360883	60 mile				
Job Hours							
Date	On Location Hours	Operating Hours	Date	On Location Hours	Operating Hours	Date	On Location Hours
10/27/2011	6	1					
TOTAL		Total is the sum of each column separately					
Job				Job Times			
Formation Name				Date	Time	Time Zone	
Formation Depth (MD)	Top	Bottom		Called Out	27 - Oct - 2011	10:40	MST
Form Type	BHST			On Location	27 - Oct - 2011	14:30	MST
Job depth MD	1195. ft	Job Depth TVD	1195. ft	Job Started	27 - Oct - 2011	19:38	MST
Water Depth		Wk Ht Above Floor	3. ft	Job Completed	27 - Oct - 2011	20:35	MST
Perforation Depth (MD)	From	To		Departed Loc	27 - Oct - 2011	21:30	MST
Well Data							
Description	New / Used	Max pressure psig	Size in	ID in	Weight lbm/ft	Thread	Grade
13 1/2" Open Hole				13.5			
9 5/8" Surface Casing	New		9.625	9.001	32.3		H-40
Sales/Rental/3 <sup>rd</sup> Party (HES)							
Description				Qty	Qty uom	Depth	Supplier
PLUG,CMTG,TOP,9 5/8,HWE,8.16 MIN/9.06 MA				1	EA		
Tools and Accessories							
Type	Size	Qty	Make	Depth	Type	Size	Qty
Guide Shoe					Packer		
Float Shoe					Bridge Plug		
Float Collar					Retainer		
Insert Float							
Stage Tool							
Miscellaneous Materials							
Gelling Agt		Conc		Surfactant		Conc	
Treatment Fld		Conc		Inhibitor		Conc	
				Acid Type		Qty	
				Sand Type		Size	
						Qty	
						%	

Fluid Data									
Stage/Plug #: 1									
Fluid #	Stage Type	Fluid Name	Qty	Qty uom	Mixing Density lbm/gal	Yield ft <sup>3</sup> /sk	Mix Fluid Gal/sk	Rate bbl/min	Total Mix Fluid Gal/sk
1	Water Spacer		20.00	bbl	8.34	.0	.0	.0	
2	VersaCem Lead	VERSACEM (TM) SYSTEM (452010)	175.0	sacks	12.3	2.38	13.75		13.75
	13.75 Gal	FRESH WATER							
3	VersaCem Tail Cement	VERSACEM (TM) SYSTEM (452010)	160.0	sacks	12.8	2.11	11.75		11.75
	11.75 Gal	FRESH WATER							
4	Displacement Fluid		90.00	bbl	8.34	.0	.0	.0	
Calculated Values		Pressures		Volumes					
Displacement	90	Shut In: Instant		Lost Returns	0	Cement Slurry	134	Pad	
Top Of Cement	SURFACE	5 Min		Cement Returns	25	Actual Displacement	90	Treatment	
Frac Gradient		15 Min		Spacers	20	Load and Breakdown		Total Job	244
Rates									
Circulating	RIG	Mixing	8	Displacement	10/4	Avg. Job	8		
Cement Left In Pipe	Amount	44 ft	Reason	Shoe Joint					
Frac Ring # 1 @	ID	Frac ring # 2 @	ID	Frac Ring # 3 @	ID	Frac Ring # 4 @	ID		
The Information Stated Herein Is Correct				Customer Representative Signature					



*The Road to Excellence Starts with Safety*

Sold To #: 300721	Ship To #: 2885728	Quote #:	Sales Order #: 8561995
Customer: WILLIAMS PRODUCTION RMT INC - EBUS		Customer Rep: Geary, Scott	
Well Name: SG	Well #: 342-27	API/UWI #: 05-045-20674	
Field: GRAND VALLEY	City (SAP): PARACHUTE	County/Parish: Garfield	State: Colorado
Legal Description:			
Lat: N 39.408 deg. OR N 39 deg. 24 min. 28.631 secs.		Long: E 108.088 deg. OR E 108 deg. 5 min. 17.531 secs.	
Contractor: H&P Drilling		Rig/Platform Name/Num: H&P 278	
Job Purpose: Cement Surface Casing			Ticket Amount:
Well Type: Development Well		Job Type: Cement Surface Casing	
Sales Person: KOHL, KYLE		Srvs Supervisor: MAGERS, MICHAEL	MBU ID Emp #: 339439

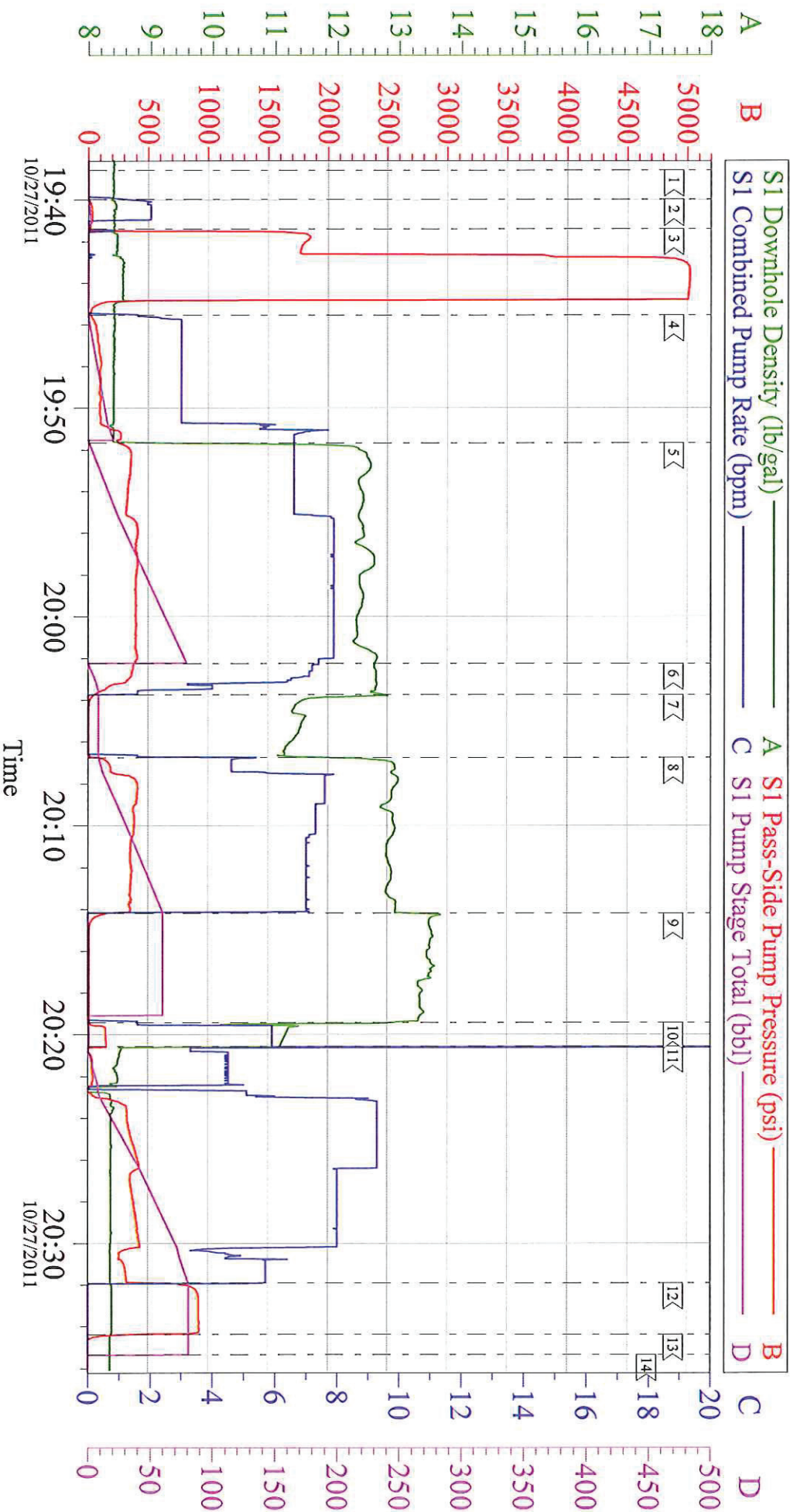
Activity Description	Date/Time	Cht #	Rate bbl/ min	Volume bbl		Pressure psig		Comments
				Stage	Total	Tubing	Casing	
Crew Leave Yard	10/27/2011 12:30							HES ALL PRESENT
Arrive At Loc	10/27/2011 14:30							RIG WAS PULLING DRILL PIPE WHEN HES ARRIVED. CASERS RAN CASING AND RIG CIRCULATED WHILE CASERS RIGGED DOWN
Assessment Of Location Safety Meeting	10/27/2011 14:40							LOCATION IN GOOD CONDITION/ MUDDY IS SPOTS
Pre-Rig Up Safety Meeting	10/27/2011 14:50							JSA ON RIGGING UP
Rig-Up Equipment	10/27/2011 15:00							1 PICKUP 1 ELITE 1 BULK TRUCK 1 BODY LOAD
Safety Huddle	10/27/2011 19:20							RIG CREW AND HES ALL PRESENT
Start Job	10/27/2011 19:38							TD-1195 TP-1185 SJ- 44 MW-9.2 CASING- 9 5/8 32.3# H-40 OH- 13.5"
Other	10/27/2011 19:39		2	2			35.0	FILL LINES
Pressure Test	10/27/2011 19:41		0.5	0.5			5022. 0	PSI TEST OK
Pump Spacer 1	10/27/2011 19:45		3	20			244.0	FRESH WATER
Pump Lead Cement	10/27/2011 19:51		8	74.2			414.0	VERSACEM 175 SKS 12.3 PPG 2.38 FT3/SK 13.75 GAL/SK

Activity Description	Date/Time	Cht #	Rate bbl/ min	Volume bbl		Pressure psig		Comments
				Stage	Total	Tubing	Casing	
Pump Tail Cement	10/27/2011 20:02		8	60.1			390.0	VERSACEM 160 SKS 12.8 PPG 2.11 FT3/SK 11.75 GAL/SK HAD TO SHUT DONE GOING INTO TAIL CEMENT/PPO ON BODYLOAD SHUT OFF HOOKED UP EMERENCENY AIR OFF OF BULK TRUCK AND AUSED IT FOR THE REST OF TAIL CEMENT/GOT CEMENT BACK TO DENSITY AND PUMPED
Shutdown	10/27/2011 20:14							
Drop Plug	10/27/2011 20:19							PLUG AWAY NO PROBLEMS
Pump Displacement	10/27/2011 20:20		10	90			415.0	FRESH WATER
Slow Rate	10/27/2011 20:31		2	80			400.0	GOT 25 BBLs OF CEMENT TO SURFACE
Bump Plug	10/27/2011 20:34			90			500.0	BUMPED PLUG
Check Floats	10/27/2011 20:35						907.0	FLOATS HELD/GOT .5 BBL BACK INTO TANK
End Job	10/27/2011 20:36							HAD GOOD CIRCULATION THROUGHOUT JOB/THANKS FOR USING HES AND THE CREW OF MIKE MAGERS



# WILLIAMS H&P 278

## SURFACE 9.625 SG 342-27



Customer: WILLIAMS H&P 278  
Well Description: SG 342-27  
Company Rep: SCOTT GEARY

Job Date: 27-Oct-2011  
Job Type: SURFACE  
Cement Supervisor: MIKE MAGERS

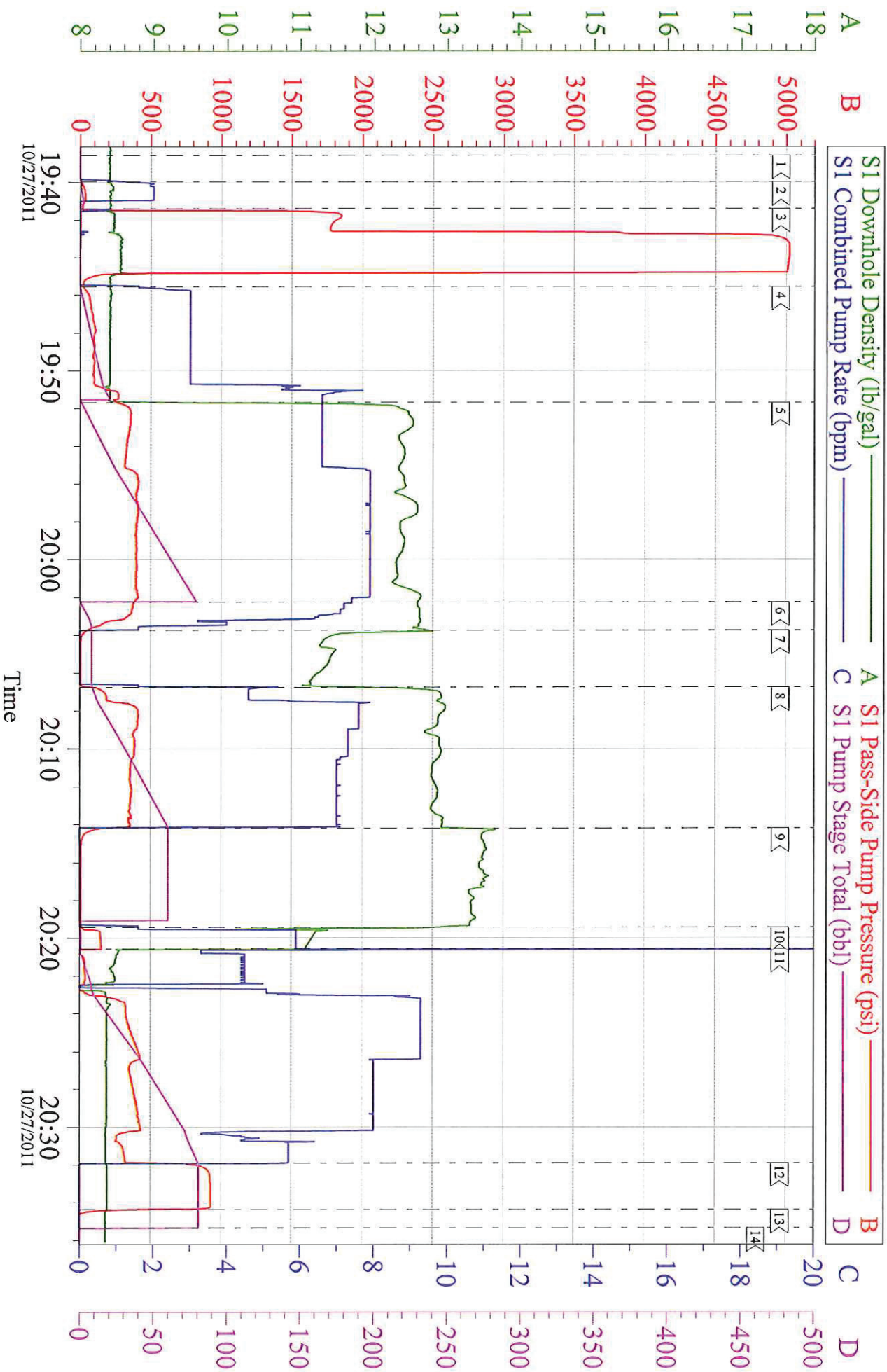
Sales Order #: 8561995  
ADC Used: TES  
Elite #: 7

DFAN SINCLAIR

OptiCem v6.3.4  
27-Oct-11 21:14

# WILLIAMS H&P 278

## SURFACE 9.625 SG 342-27



Customer: WILLIAMS H&P 278  
 Well Description: SG 342-27  
 Company Rep: SCOTT GEARY

Job Date: 27-Oct-2011  
 Job Type: SURFACE  
 Cement Supervisor: MIKE MAGERS

Sales Order #: 8561995  
 ADC Used: TES  
 Elite #: 7

DFAN SINCLAIR

OptCem v6.3.4  
 27-Oct-11 21:15