

Encana OIL & GAS (USA) INC.

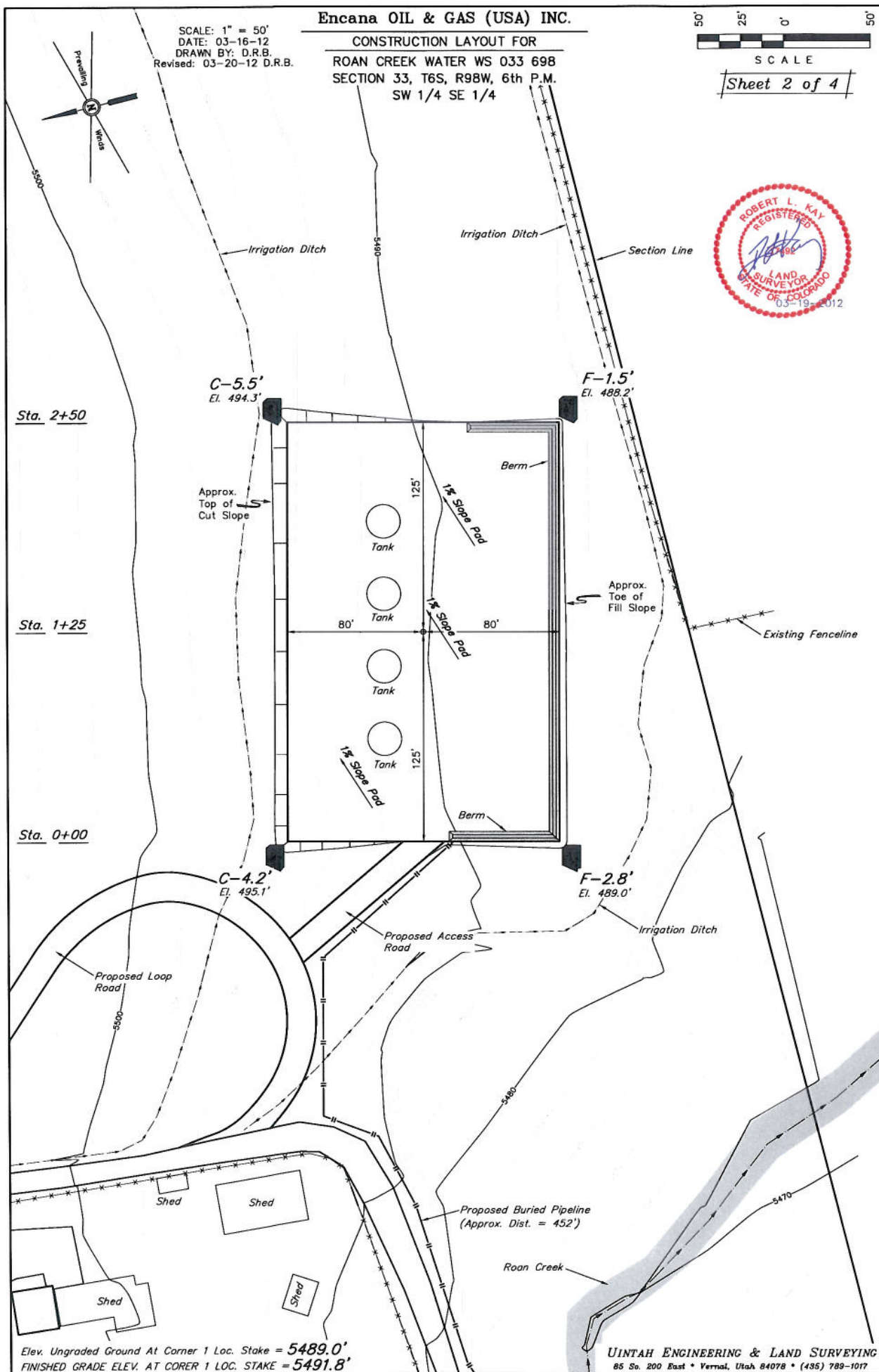
SCALE: 1" = 50'
DATE: 03-16-12
DRAWN BY: D.R.B.
Revised: 03-20-12 D.R.B.

CONSTRUCTION LAYOUT FOR
ROAN CREEK WATER WS 033 698
SECTION 33, T6S, R98W, 6th P.M.
SW 1/4 SE 1/4

50' 25' 0' 50'

SCALE

Sheet 2 of 4



Elev. Ungraded Ground At Corner 1 Loc. Stake = 5489.0'
FINISHED GRADE ELEV. AT CORER 1 LOC. STAKE = 5491.8'

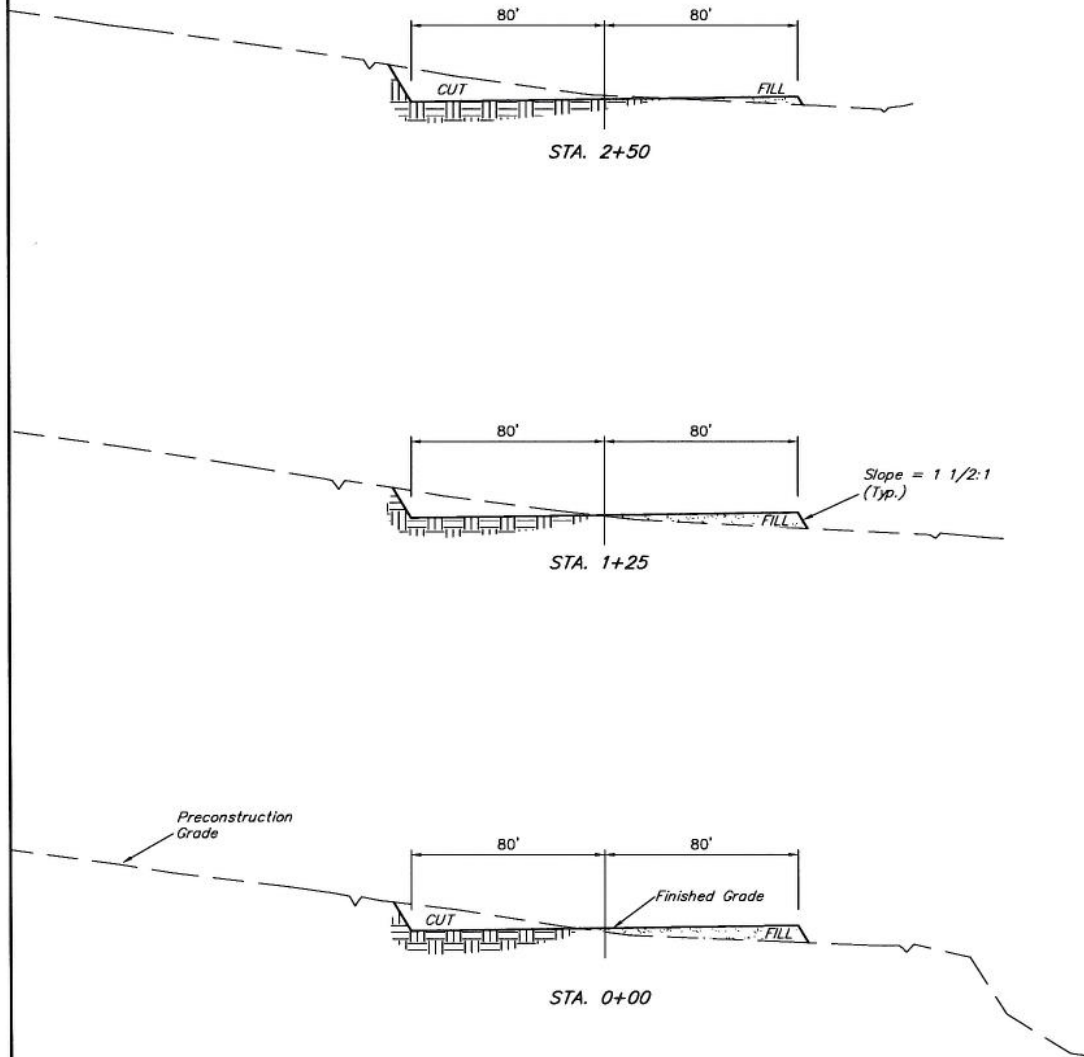
UINTAH ENGINEERING & LAND SURVEYING
85 So. 200 East • Vernal, Utah 84078 • (435) 789-1017

1" = 20'
X-Section
Scale
1" = 50'

Encana OIL & GAS (USA) INC.
CONSTRUCTION LAYOUT CROSS SECTION FOR
ROAN CREEK WATER STORAGE WS 033 698
SECTION 33, T6S, R98W, 6th P.M.
SW 1/4 SE 1/4

Sheet 3 of 4

DATE: 03-16-12
DRAWN BY: D.R.B.
Revised: 03-20-12 D.R.B.
Revised: 03-21-12 D.R.B.



APPROXIMATE ACREAGES	
APPROX. PAD DISTURBANCE	= ± 1.299 ACRES
ACCESS ROAD DISTURBANCE	= ± 0.068 ACRES
LOOP ROAD DISTURBANCE	= ± 0.031 ACRES
PROPOSED PIPELINE DISTURBANCE	= ± 0.311 ACRES
TOTAL	= ± 1.709 ACRES

NOTE:
Topsoil should not be
Stripped Below Finished
Grade on Substructure Area.

* NOTE:
FILL QUANTITY INCLUDES
5% FOR COMPACTION

APPROXIMATE YARDAGES

(6") Topsoil Stripping	=	830 Cu. Yds.
Remaining Location	=	1520 Cu. Yds.
TOTAL CUT	=	2,350 CU.YDS.
FILL	=	1,520 CU.YDS.

EXCESS MATERIAL	=	830 Cu. Yds.
Topsoil	=	830 Cu. Yds.
EXCESS UNBALANCE (After Interim Rehabilitation)	=	0 Cu. Yds.