

Encana OIL & GAS (USA) INC.
ROAN CREEK WATER WS 033 698
LOCATED IN GARFIELD COUNTY, COLORADO
SECTION 33, T6S, R98W, 6th P.M.

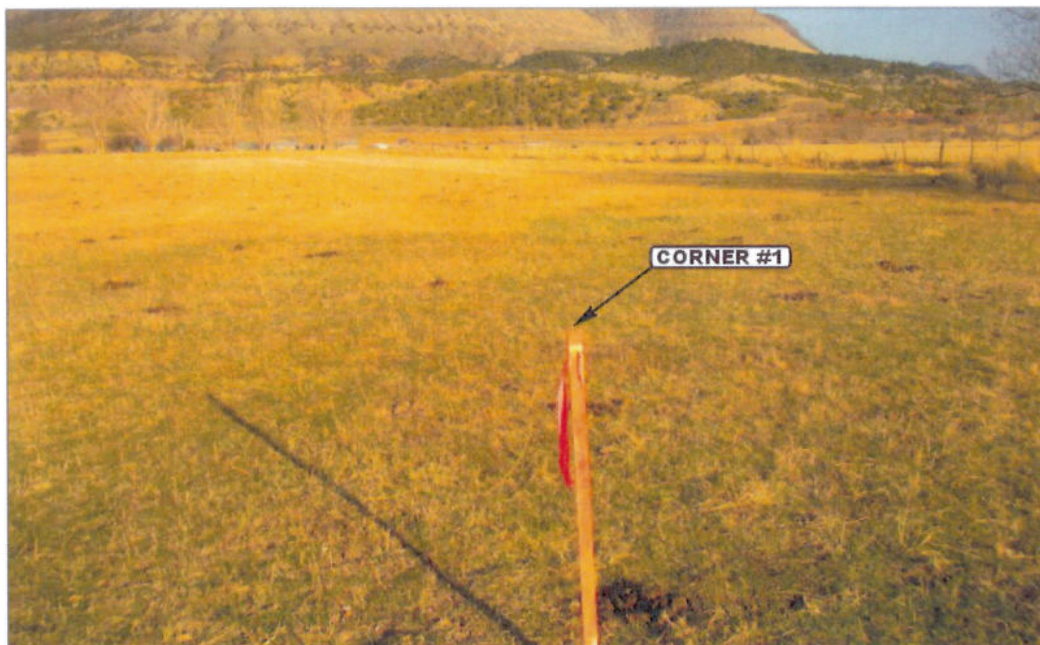


PHOTO: VIEW OF CORNER #1

CAMERA ANGLE: EASTERLY

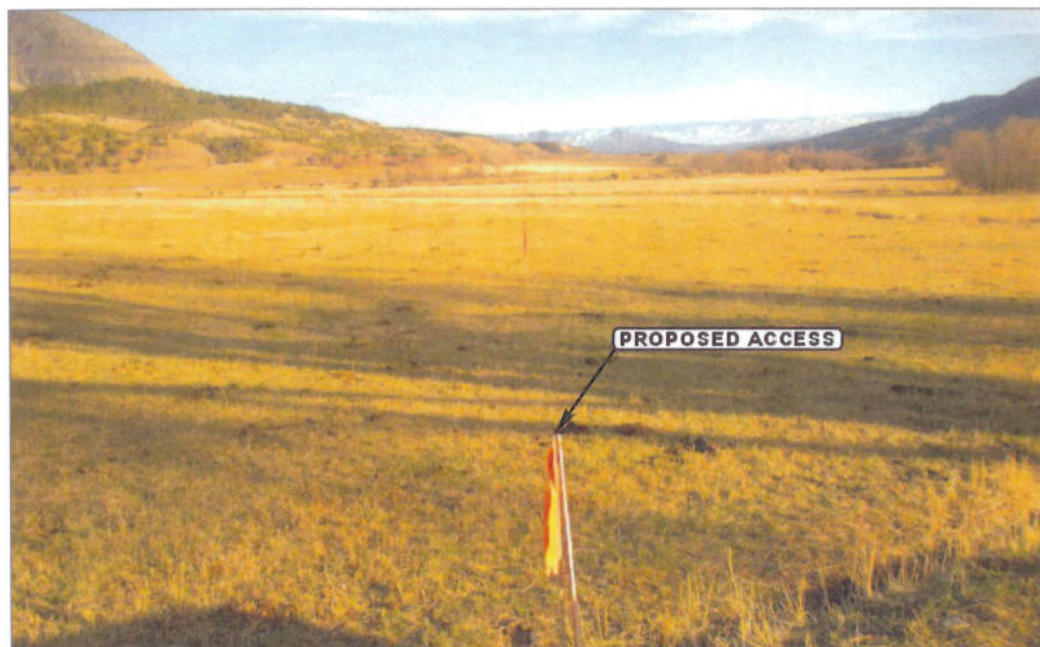


PHOTO: VIEW FROM BEGINNING OF PROPOSED ACCESS

CAMERA ANGLE: SOUTHEASTERLY



UELS Uintah Engineering & Land Surveying
85 South 200 East Vernal, Utah 84078
(435) 789-1017 * FAX (435) 789-1813

LOCATION PHOTOS

03 **19** **12**
MONTH DAY YEAR

TAKEN BY: B.J. DRAWN BY: J.L.G. REVISED: 03-20-12

PHOTO
P1

Encana OIL & GAS (USA) INC.
ROAN CREEK WATER WS 033 698
LOCATED IN GARFIELD COUNTY, COLORADO
SECTION 33, T6S, R98W, 6th P.M.



PHOTO: VIEW OF PROPOSED PAD

CAMERA ANGLE: NORTHERLY



PHOTO: VIEW OF PROPOSED PAD

CAMERA ANGLE: SOUTHERLY



- Since 1964 -

U **E** **L** **S** **U**intah Engineering & Land Surveying
85 South 200 East Vernal, Utah 84078
(435) 789-1017 * FAX (435) 789-1813

LOCATION PHOTOS

03 **19** **12**
MONTH DAY YEAR

TAKEN BY: B.J.

DRAWN BY: J.L.G.

REVISED: 03-20-12

PHOTO
P2

Encana OIL & GAS (USA) INC.
ROAN CREEK WATER WS 033 698
LOCATED IN GARFIELD COUNTY, COLORADO
SECTION 33, T6S, R98W, 6th P.M.



PHOTO: VIEW OF PROPOSED PAD

CAMERA ANGLE: EASTERLY



PHOTO: VIEW OF PROPOSED PAD

CAMERA ANGLE: WESTERLY



- Since 1964 -

UELS Uintah Engineering & Land Surveying
85 South 200 East Vernal, Utah 84078
(435) 789-1017 * FAX (435) 789-1813

LOCATION PHOTOS

03 **19** **12**
MONTH DAY YEAR

TAKEN BY: B.J. DRAWN BY: J.L.G. REVISED: 03-20-12

PHOTO
P3