

**HALLIBURTON**

---

# **WILLIAMS PRODUCTION RMT INC - EBUS**

---

GM 412-27  
GRAND VALLEY  
Garfield County , Colorado

## **Cement Surface Casing**

13-Jun-2011

### **Post Job Summary**

*The Road to Excellence Starts with Safety*

Sold To #: 300721	Ship To #: 2856147	Quote #:	Sales Order #: 8201128
Customer: WILLIAMS PRODUCTION RMT INC - EBUS	Customer Rep: Oaks, Rick		
Well Name: GM	Well #: 412-27	API/UWI #: 05-045-19746	
Field: GRAND VALLEY	City (SAP): PARACHUTE	County/Parish: Garfield	State: Colorado
Lat: N 39.491 deg. OR N 39 deg. 29 min. 27.902 secs.	Long: W 108.095 deg. OR W -109 deg. 54 min. 16.909 secs.		
Contractor: H&P 278	Rig/Platform Name/Num: H&P 278		
Job Purpose: Cement Surface Casing			
Well Type: Development Well	Job Type: Cement Surface Casing		
Sales Person: KOHL, KYLE	Srv Supervisor: HOEFER, BRYAN	MBU ID Emp #: 415775	

**Job Personnel**

HES Emp Name	Exp Hrs	Emp #	HES Emp Name	Exp Hrs	Emp #	HES Emp Name	Exp Hrs	Emp #
BANKS, BRENT A	6	371353	HOEFER, BRYAN D	6	415775	JENKINS, DEMON Lashaun	6	457892
KUKUS, CARLTON Dean	6	458577						

**Equipment**

HES Unit #	Distance-1 way	HES Unit #	Distance-1 way	HES Unit #	Distance-1 way	HES Unit #	Distance-1 way
10722398	60 mile	10872429	60 mile	11139330	60 mile	11259885	60 mile
11360883	60 mile						

**Job Hours**

Date	On Location Hours	Operating Hours	Date	On Location Hours	Operating Hours	Date	On Location Hours	Operating Hours
6/12/2011	4	.5	6/13/2011	2	.5			

TOTAL Total is the sum of each column separately

Job				Job Times			
Formation Name	Top	Bottom		Date	Time	Time Zone	
Formation Depth (MD)				Called Out	12 - Jun - 2011 16:30	MST	
Form Type		BHST		On Location	12 - Jun - 2011 20:00	MST	
Job depth MD	1437. ft	Job Depth TVD	1437. ft	Job Started	12 - Jun - 2011 23:34	MST	
Water Depth		Wk Ht Above Floor	4. ft	Job Completed	13 - Jun - 2011 00:26	MST	
Perforation Depth (MD)	From	To		Departed Loc			

**Well Data**

Description	New / Used	Max pressure psig	Size in	ID in	Weight lbm/ft	Thread	Grade	Top MD ft	Bottom MD ft	Top TVD ft	Bottom TVD ft
Open Hole				13.5				.	1400.		
Surface Casing	Unknown		9.625	9.001	32.3		H-40	.	1400.		

**Sales/Rental/3<sup>rd</sup> Party (HES)**

Description	Qty	Qty uom	Depth	Supplier
PLUG,CMTG,TOP,9 5/8,HWE,8.16 MIN/9.06 MA	1	EA		

**Tools and Accessories**

Type	Size	Qty	Make	Depth	Type	Size	Qty	Make	Depth	Type	Size	Qty	Make
Guide Shoe					Packer					Top Plug	9.625"	1	
Float Shoe					Bridge Plug					Bottom Plug			
Float Collar					Retainer					SSR plug set			
Insert Float										Plug Container	9.625"	1	
Stage Tool										Centralizers			

**Miscellaneous Materials**

Gelling Agt	Conc	Surfactant	Conc	Acid Type	Qty	Conc	%
Treatment Fld	Conc	Inhibitor	Conc	Sand Type	Size		Qty

**Fluid Data**

Stage/Plug #: 1
-----------------

**HALLIBURTON*****Cementing Job Summary***

Fluid #	Stage Type	Fluid Name	Qty	Qty uom	Mixing Density lbm/gal	Yield ft <sup>3</sup> /sk	Mix Fluid Gal/sk	Rate bbl/min	Total Mix Fluid Gal/sk
1	Spacer		20.00	bbl	8.33	.0	.0	8	
2	VersaCem Lead	VERSACEM (TM) SYSTEM (452010)	160.0	sacks	12.3	2.38	13.75	8	13.75
		13.75 Gal FRESH WATER							
3	VersaCem Tail	VERSACEM (TM) SYSTEM (452010)	160.0	sacks	12.8	2.11	11.75	8	11.75
		11.75 Gal FRESH WATER							
4	Displacement Fluid		106.3	bbl	8.34	.0	.0	10	
<b>Calculated Values</b>		<b>Pressures</b>		<b>Volumes</b>					
Displacement	106.3	Shut In: Instant		Lost Returns	0	Cement Slurry	127.9	Pad	
Top Of Cement	SURFACE	5 Min		Cement Returns	30	Actual Displacement	106.3	Treatment	
Frac Gradient		15 Min		Spacers	20	Load and Breakdown		Total Job	
<b>Rates</b>									
Circulating	8	Mixing	8	Displacement	10	Avg. Job	9		
Cement Left In Pipe	Amount	42.02ft	Reason	Shoe Joint					
Frac Ring # 1 @	ID	Frac ring # 2 @	ID	Frac Ring # 3 @	ID	Frac Ring # 4 @	ID		
The Information Stated Herein Is Correct				Customer Representative Signature					



*The Road to Excellence Starts with Safety*

Sold To #: 300721	Ship To #: 2856147	Quote #:	Sales Order #: 8201128
Customer: WILLIAMS PRODUCTION RMT INC - EBUS	Customer Rep: Oaks, Rick		
Well Name: GM	Well #: 412-27	API/UWI #:	05-045-19746
Field: GRAND VALLEY	City (SAP): PARACHUTE	County/Parish: Garfield	State: Colorado
Legal Description:			
Lat: N 39.491 deg. OR N 39 deg. 29 min. 27.902 secs.		Long: W 108.095 deg. OR W -109 deg. 54 min. 16.909 secs.	
Contractor: H&P 278	Rig/Platform Name/Num: H&P 278		
Job Purpose: Cement Surface Casing	Ticket Amount:		
Well Type: Development Well	Job Type: Cement Surface Casing		
Sales Person: KOHL, KYLE	Srv Supervisor: HOEFER, BRYAN	MBU ID Emp #:	415775

Activity Description	Date/Time	Cht #	Rate bbl/min	Volume bbl		Pressure psig		Comments
				Stage	Total	Tubing	Casing	
Call Out	06/12/2011 16:30							
Pre-Convoy Safety Meeting	06/12/2011 18:30							WITH ALL HES EE'S
Depart from Service Center or Other Site	06/12/2011 18:35							
Arrive At Loc	06/12/2011 20:00							ARRIVED 1 HR EARLY, RUNNING CASING UPON ARRIVAL
Assessment Of Location Safety Meeting	06/12/2011 20:10							WITH ALL HES EE'S
Pre-Rig Up Safety Meeting	06/12/2011 20:30							WITH ALL HES EE'S
Rig-Up Equipment	06/12/2011 20:35							IRON TO FLOOR, WATER LINES, 1 660 BULK TRUCK, F-550
Pre-Job Safety Meeting	06/12/2011 23:15							WITH ALL HES EE'S AND RIG CREW
Start Job	06/12/2011 23:34							TD-1437', TP-1392.30', SJ-42.02', MUD-10.2#, OH-13.5", 9 5/8" CASING 32.3#
Prime Pumps	06/12/2011 23:34		2	2			124.0	FRESH WATER
Test Lines	06/12/2011 23:35		0.5	0.5			3500.0	TESTED TO 3500psi, TEST HELD GREAT
Pump Spacer	06/12/2011 23:37		8	20			390.0	FRESH WATER
Pump Lead Cement	06/12/2011 23:43		8	67.8			439.0	160sks OF VERSACEM PUMPED @ 12.3#, 2.38 ft3/sk, 13.75 gal/sk
Pump Tail Cement	06/12/2011 23:52		8	60.1			394.0	160sks OF VERSACEM PUMPED @ 12.8#, 2.11 ft3/sk, 11.75 gal/sk
Shutdown	06/13/2011 00:04							

Sold To #: 300721

Ship To #: 2856147

Quote #:

Sales Order #:

8201128

SUMMIT Version: 7.20.130

Monday, June 13, 2011 01:20:00

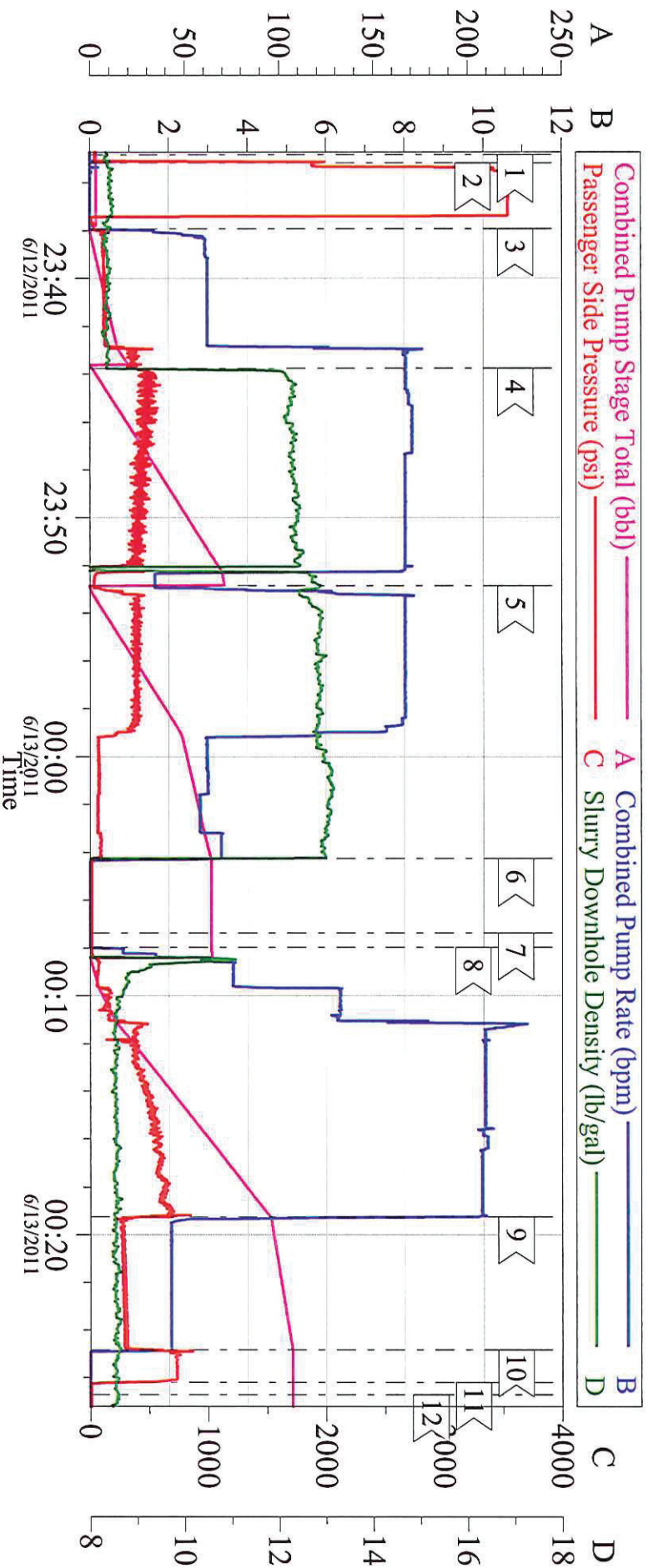
Activity Description	Date/Time	Cht #	Rate bbl/min	Volume bbl		Pressure psig		Comments
				Stage	Total	Tubing	Casing	
Drop Top Plug	06/13/2011 00:07							COMPANY REP. VERIFIED PLUG LEFT HEAD
Pump Displacement	06/13/2011 00:07		10	106.3			607.0	FRESH WATER
Slow Rate	06/13/2011 00:19		2	96			290.0	LAST 10 BBLS
Bump Plug	06/13/2011 00:24		2	106.3			735.0	TOOK 500psi OVER
Check Floats	06/13/2011 00:26							FLOATS HELD
End Job	06/13/2011 00:26							GOOD RETURNS THROUGHOUT JOB, 30 BBLS BACK TO THE PIT
Post-Job Safety Meeting (Pre Rig-Down)	06/13/2011 00:30							WITH ALL HES EE'S
Rig-Down Equipment	06/13/2011 01:30							
Pre-Convoy Safety Meeting	06/13/2011 02:00							WITH ALL HES EE'S
Depart Location for Service Center or Other Site	06/13/2011 02:05							THANK YOU FOR USING GRAND JUNCTION HALLIBURTON CEMENT, BRYAN HOEFER AND CREW



EVENT #	EVENT	VOLUME	SACKS	WEIGHT	YIELD	GAL/ SK
1	Start Job					
6	Test Lines	3500.0				
	H2O SPACER	20.0				
	LEAD CEMENT	67.8	160	12.3	2.38	13.75
15	Tail Cement	60.1	160	12.8	2.11	11.75
	SHUTDOWN	0.0				
22	Drop Plug	0.0				
23	Displace with H2O	106.3				
26	Land Plug	289.0				
2	Release Psi / Job Over	0.0				
	3.5 BBLS TO SURFACE ON TRUE HOLE		Do Not Overdisplace			
DISPLACEMENT	TOTAL PIPE	SHOE JOINT LENGTH		FLOAT COLLAR	BBL/FT	H2O REQ.
106.27	1392.3	42.02		1350.28	0.0787	250
PSI to Lift Pipe	521	*****Use Mud Scales on Each Tier*****				
Total Displacement	106.27					
CALCULATED DIFFERENTIAL PSI		289		TOTAL FLUID PUMPED		255
Collapse	1,400	Burst	2270		SO#	8201128

# WILLIAMS

## GM 412-27, SURFACE



### Local Event Log

1 <	START JOB	6/12/2011 23:34:50	2 <	TEST LINES	6/12/2011 23:35:11
3 <	PUMP SPACER	6/12/2011 23:37:56	4 <	PUMP LEAD CEMENT	6/12/2011 23:43:46
5 <	PUMP TAIL CEMENT	6/12/2011 23:52:51	6 <	SHUT DOWN	6/13/2011 00:04:16
7 <	DROP TOP PLUG	6/13/2011 00:07:22	8 <	PUMP DISPLACEMENT	6/13/2011 00:07:58
9 <	SLOW RATE	6/13/2011 00:19:14	10 <	BUMP PLUG	6/13/2011 00:24:49
11 <	CHECK FLOATS	6/13/2011 00:26:12	12 <	END JOB	6/13/2011 00:26:42

Customer: WILLIAMS  
Well Description: GM 412-27

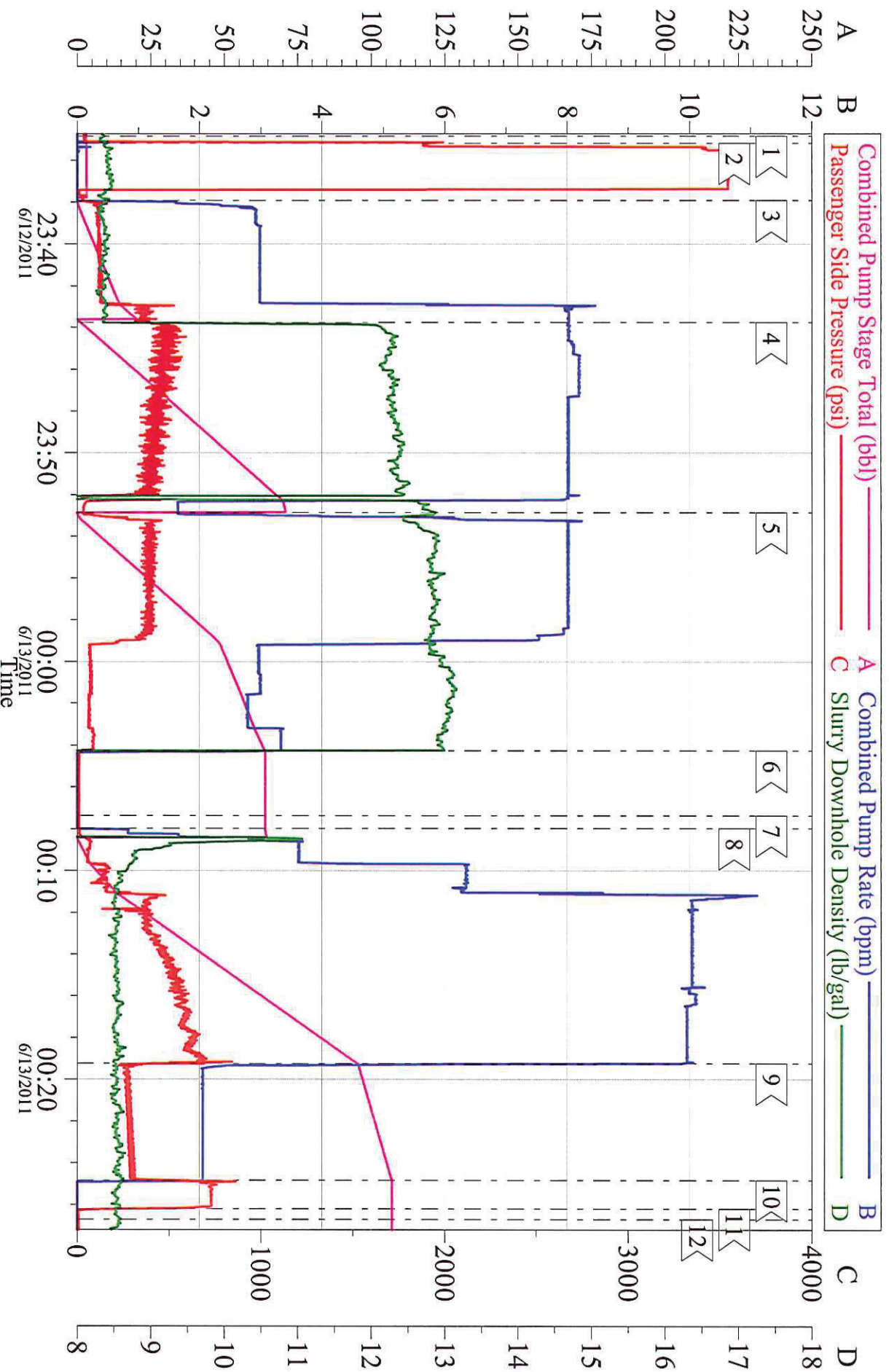
Job Date: 12-Jun-2011  
JOB TYPE: SURFACE

Sales Order #: 8201128  
ADC USED: YES



# WILLIAMS

## GM 412-27, SURFACE



Customer: WILLIAMS  
Well Description: GM 412-27

Job Date: 12-Jun-2011  
JOB TYPE: SURFACE

Sales Order #: 8201128  
ADC USED: YES

OptiCem v6.4.9  
13-Jun-11 01:07