

BMP Plan

Wiepking-Fullerton Energy, L.L.C.
4600 S. Downing St.
Englewood, CO 80113
303-789-1798
303-761-9067 (fax)

Certification to Discharge
Under
CDPS General Permit COR-03000
Stormwater Discharges Associated with Construction

Certification Number COR 39788

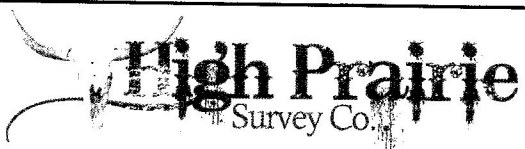
Napali # 9 well
T10S, R55W
Sec. 17: SW1/4NE1/4
Lincoln County, Colorado

Description of Well Site and Construction Area

1-3 acre site with access road for drilling of oil and gas well. Terrain is flat with native grass and sagebrush. Surface Roughening will be used on low side of drill site to reduce speed of runoff, increase infiltration, reduce erosion, trap sediment and prepare soil for reseeding. A dirt berm will be placed on the North, South and West edge of the well pad to protect surface water located 100' South of location. No Water or Mud pits will be excavated. A closed loop system will be used for all Water and Drilling Mud. Topsoil will be separated and spread on drill site as final operation before reseeding operations, which will be completed within 6 months weather permitting. After drilling operations are completed and to prevent soil erosion. The drill site will be disked and straw crimped in or manure spread.

Stormwater Management Plan (SWMP) is on file in Wiepking-Fullerton Energy, L.L.C. office.

Spill Prevention, Control and Countermeasure Plan is on file in Wiepking-Fullerton Energy, L.L.C. office.



Physical Address: 401 Arapahoe St.
Mail to: Box 384 Kiowa, CO 80117
Ph. 303-621-8672 - Fax 303-621-2717
www.highprairiesurvey.com

Job: 10177 Napali #9

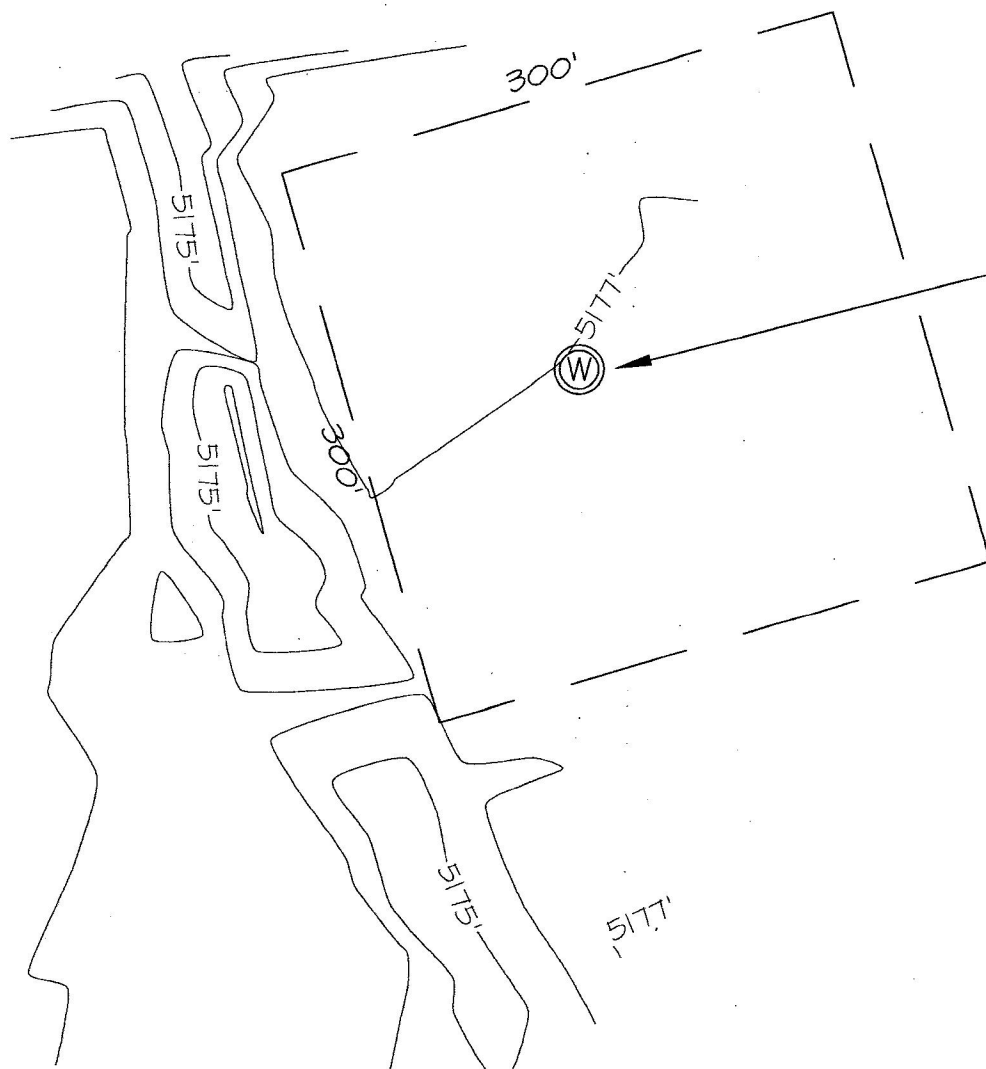
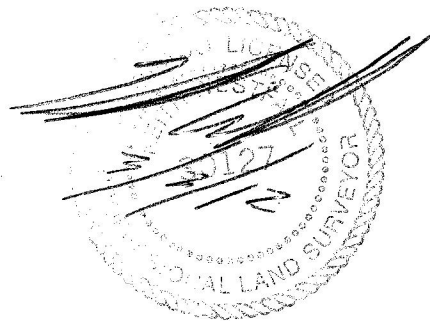
Inv # 1805

High Prairie Surveying of Kiowa, Colorado has in accordance with a request from **Jack Fincham, Wiekking Fullerton Energy** has determined the location of **Napali #9** to be **1879 feet FNL**, and **1820 feet FEL**, (90° off Section lines) of **SECTION 17**, Township **10s**, Range **55w** of the 6th Principal Meridian, **Lincoln County**, Colorado.

Date: Staked on 2-28-12 drawn on 3-2-12.

Re: Staked by Keith Westfall
Drawn: Drawn by Elijah Frane

Topo Exhibit



WIEPKING FULLERTON
NE 1/4 SEC 17-10S-55W
NAPALI #9
LINCOLN CO. COLORADO