

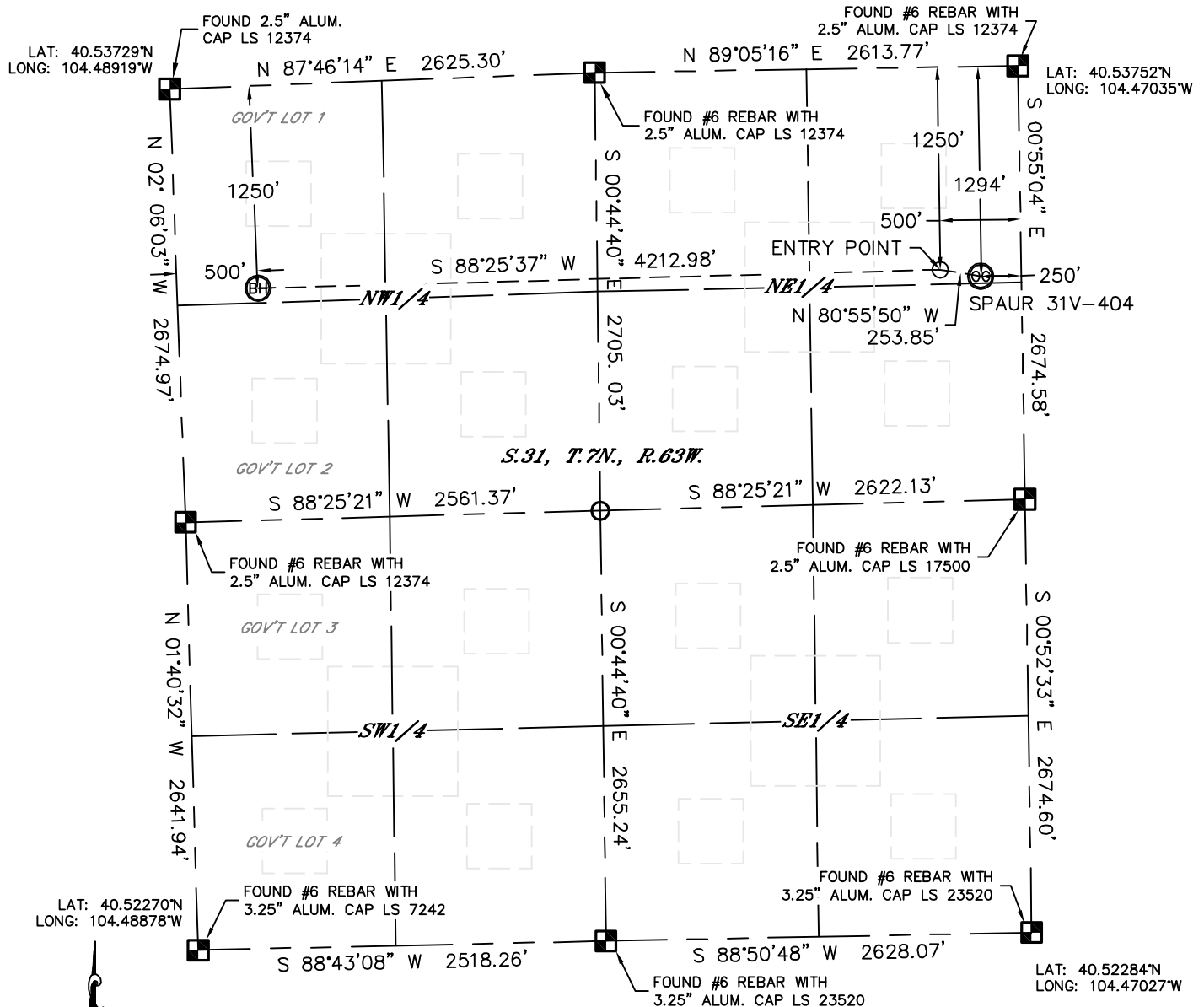


Lat40°, Inc. 1635 Foxtrail Drive, Suite 325 Loveland, CO 970-776-3321

# WELL LOCATION CERTIFICATE

THIS MAP DOES NOT REPRESENT A BOUNDARY SURVEY

SECTION: 31  
TOWNSHIP: 7N  
RANGE: 63W



In accordance with a request from Al Bragg with PDC Energy Lat40°, Inc. has determined the surface location of the SPAUR 31V-404 to be 1294' from the NORTH line and 250' from the EAST line and the bottom hole to be 1250' from the NORTH line and 500' from the WEST line as measured at right angles from the section lines of Section 31, Township 7 North, Range 63 West of the Sixth Principal Meridian, County of Weld, State of Colorado.

I hereby state that this Well Location Certificate was prepared by me, or under my direct supervision, that the fieldwork was completed on 2/16/2012, for and on behalf of PDC Energy That this is not a Land Survey Plat or an Improvement Survey Plat, and that it is not to be relied upon for establishment of fence, building, or other future improvement lines.

## NOTE:

- 1) Bearings shown are Grid Bearings of the Colorado State Plane Coordinate System, North Zone, North American Datum 1983/2007. The lineal dimensions as contained herein are based upon the "U.S. Survey Foot."
- 2) Ground elevations are based on an observed GPS elevation (NAVD 1988 DATUM).
- 3) IMPROVEMENTS: See LOCATION DRAWING for all visible improvements within 400' of disturbed area.
- 4) SURFACE USE: CROP LAND
- 5) INSTRUMENT OPERATOR: WYATT HALL

## SURFACE LOCATION

LATITUDE: 40.53396°N  
LONGITUDE: 104.47123°W  
PDOP: 1.9  
ELEV: 4757'  
1/4,1/4: NE1/4NE1/4  
NEAREST PROPERTY LINE: 250' E

## BOTTOM HOLE

LATITUDE: 40.53390°N  
LONGITUDE: 104.48728°W

## ENTRY POINT

LATITUDE: 40.53408°N  
LONGITUDE: 104.47213°W

## NOTE

According to Colorado law, you must commence any legal action based upon any defect in this W.L.C. within three years after you discover such defect. In no event, may any action based upon any defect in this survey be commenced more than ten years after the date of the certificate shown hereon. (13-80-105 C.R.S.)

## LEGEND

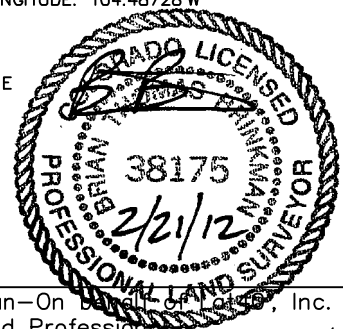
- = ALIQUOT MONUMENT AS DESCRIBED  
○ = CALCULATED POSITION

Brian T. Brinkman—On behalf of Lat40°, Inc.

Colorado Licensed Professional

Land Surveyor No. 38175

DATE: REV.2/17/2012  
PROJECT#: 2011208



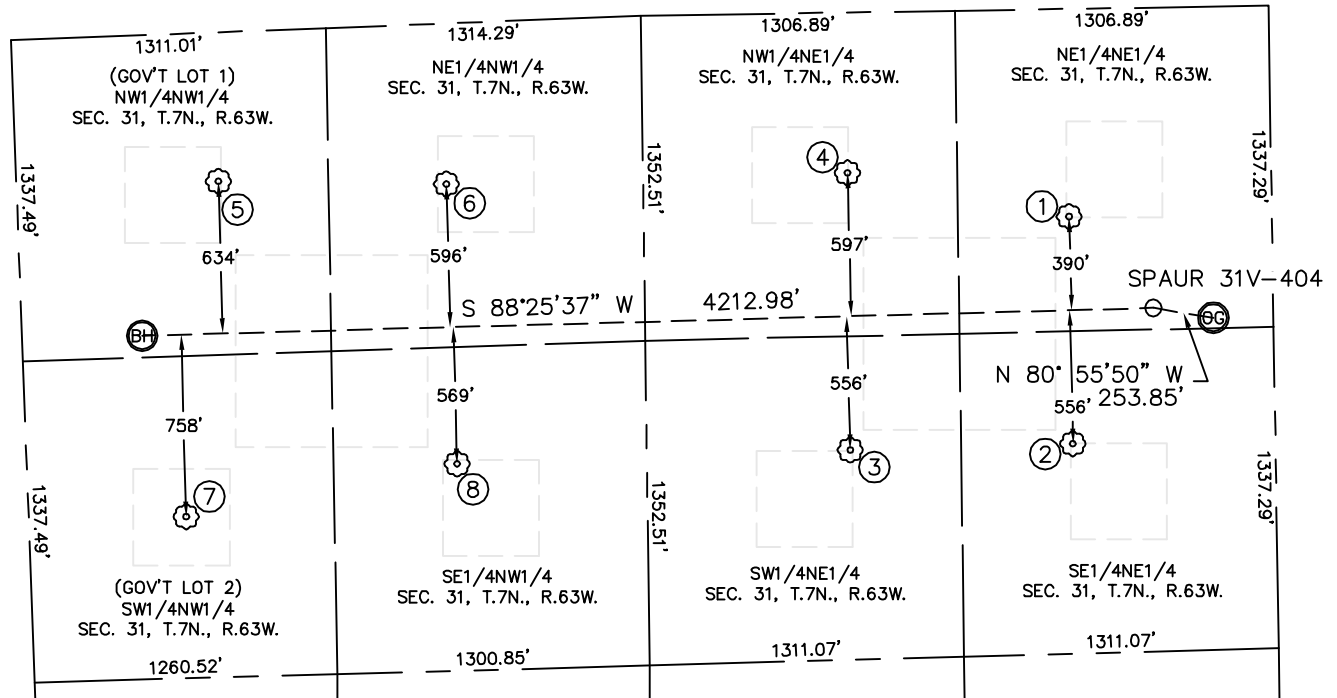


Lat40°, Inc. 1635 Foxtrail Drive, Suite 325 Loveland, CO 970-776-3321

# SITE SKETCH

SPAUR 31V-404

SECTION: 31  
TOWNSHIP: 7N  
RANGE: 63W



①

ZAHOUREK 41-31  
NW1/4NE1/4  
864' FNL  
845' FEL  
LAT-40.53513°N  
LONG-104.47337°W  
PDOP: 1.2  
ELEV: 4778'

②

ZAHOUREK 42-31  
SE1/4NE1/4  
1810' FNL  
844' FEL  
LAT-40.53254°N  
LONG-104.47336°W  
PDOP: 1.3  
ELEV: 4776'

③

ZAHOUREK 32-31  
SW1/4NE1/4  
1821' FNL  
1771' FEL  
LAT-40.53250°N  
LONG-104.47669°W  
PDOP: 1.3  
ELEV: 4776'

④

ZAHOUREK 31-31  
NW1/4NE1/4  
668' FNL  
1765' FEL  
LAT-40.53566°N  
LONG-104.47669°W  
PDOP: 2.1  
ELEV: 4795'

⑤

ZAHOUREK 11-31  
NW1/4NW1/4  
620' FNL  
841' FWL  
LAT-40.53565°N  
LONG-104.48611°W  
PDOP: 1.6  
ELEV: 4760'

⑥

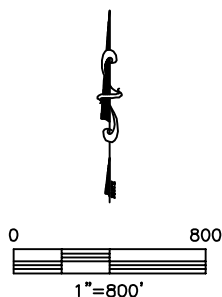
ZAHOUREK 21-31  
NE1/4NW1/4  
668' FNL  
1789' FWL  
LAT-40.53559°N  
LONG-104.48270°W  
PDOP: 4.5  
ELEV: 4779'

⑦

ZAHOUREK 12-31  
SW1/4NW1/4  
2010' FNL  
656' FWL  
LAT-40.53182°N  
LONG-104.48665°W  
PDOP: 1.3  
ELEV: 4759'

⑧

ZAHOUREK 22-31  
SE1/4NW1/4  
1834' FNL  
1792' FWL  
LAT-40.53239°N  
LONG-104.48258°W  
PDOP: 2.6  
ELEV: 4758'



DATE: REV.2/17/2012  
PROJECT#: 2011208