

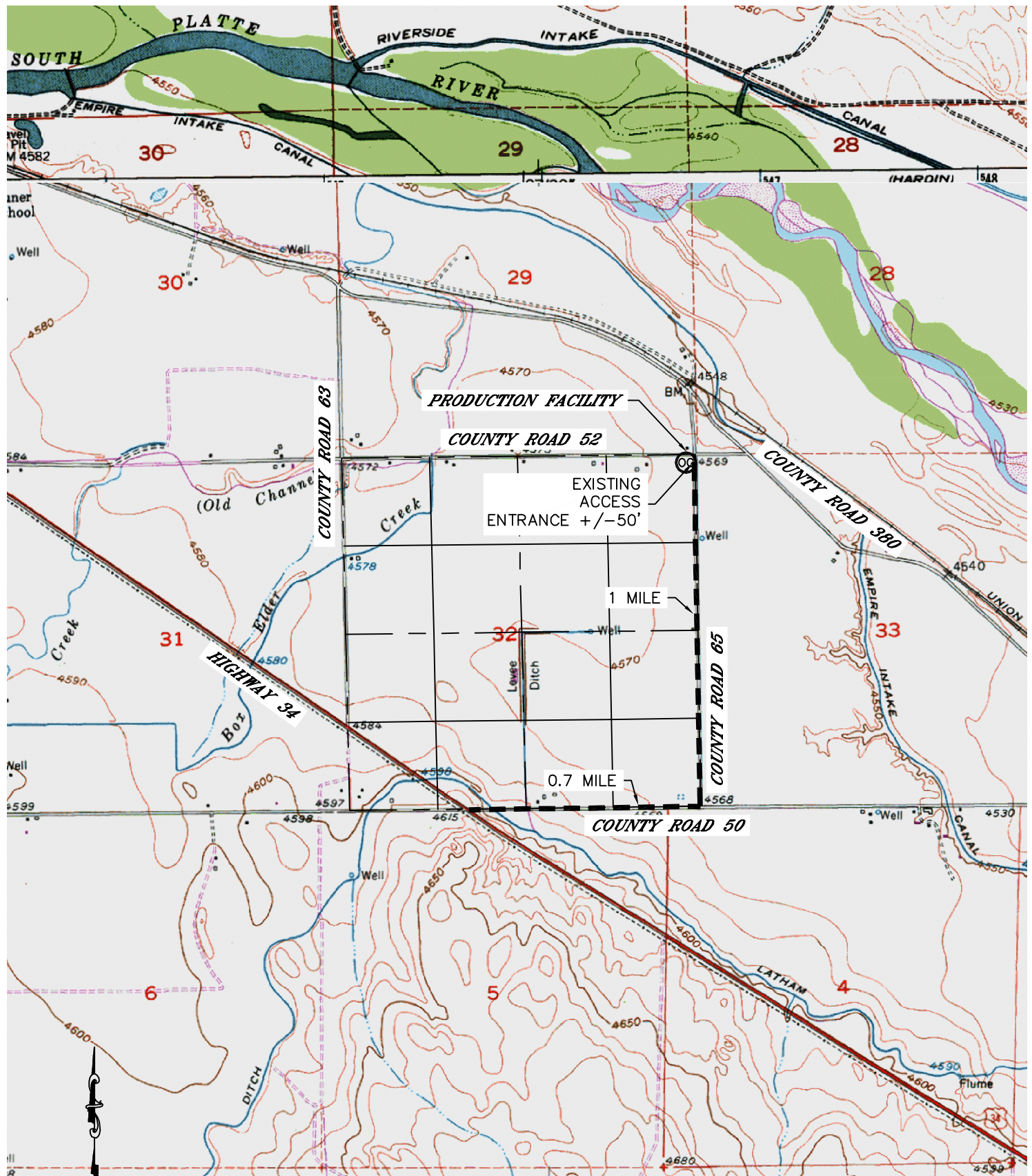


Lat40°, Inc. 1635 Foxtrail Drive, Suite 325 Loveland, CO 970-776-3321

PRODUCTION FACILITY ACCESS ROAD MAP

SIEBRING 5-63-32-16H, 17H, 32H, 48H

SECTION: 32
TOWNSHIP: 5N
RANGE: 63W



DIRECTIONS:

FROM THE INTERSECTION OF HIGHWAY 34 AND COUNTY ROAD 50, GO EAST ON COUNTY ROAD 50
0.7 MILE TO COUNTY ROAD 65, THEN NORTH ON COUNTY ROAD 65 1 MILE TO AND EXISTING
ACCESS, THEN TURN WEST INTO THE EXISTING LOCATION.

DATE: 3/12/12
PROJECT#: 2011312