

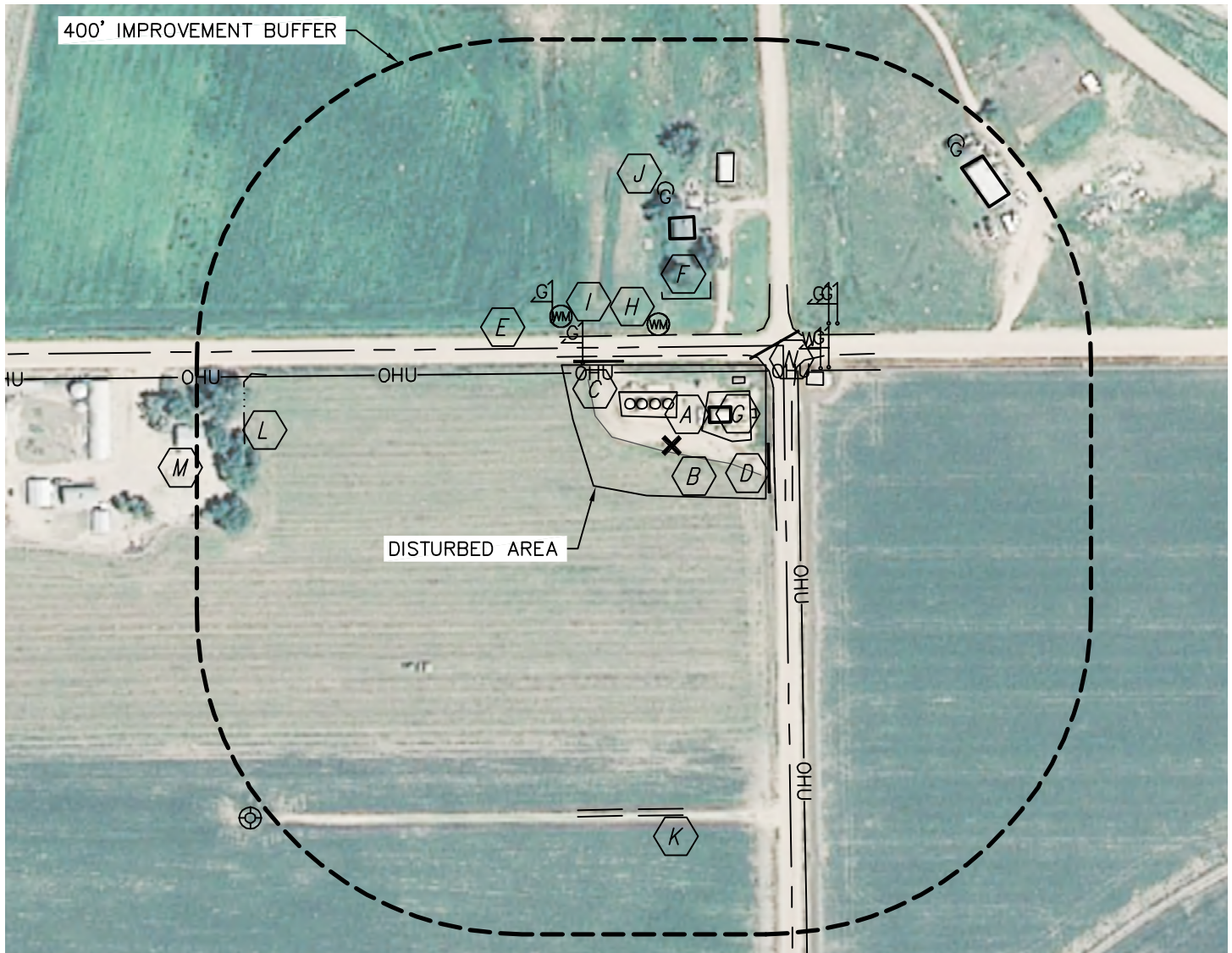


Lat40°, Inc. 1635 Foxtrail Drive, Suite 325 Loveland, CO 970-776-3321

PRODUCTION FACILITY LOCATION DRAWING

SIEBRING 5-63-32-16H, 17H, 32H, 48H

SECTION: 32
TOWNSHIP: 5N
RANGE: 63W



REFERENCE POINT LOCATION:

LATITUDE: 40.36293°N

LONGITUDE: 104.45095°W

ELEV: 4571'

PDOP: 1.4

DATE: 3/12/2012

OPERATOR: ADAM KELLY

1/41/4: NE1/4NE1/4

FNL: 121'

FEL: 139'

DISTANCE TO WELL: 1841'

ASSOCIATED NEW WELLS:

SIEBRING 5-63-32-16H,
17H, 32H, 48H

ASSOCIATED EXISTING WELLS:

SIEBRING 41-32

IMPROVEMENTS:



EX. PRODUCTION EQUIPMENT 35' N, 41',
107' & 182' NE (BILL BARRETT CORP.)



FIELD LINE 9' S



OVERHEAD UTILITY 90' N, 156' E



PIPE 119' E, 120' NW, 144' NE



COUNTY ROAD 110' N, 125' E



FENCE 180' N



BUILDING 54', 329' & 485' NE, 254' N, 579' W



WATER METER 150' & 209' NW



GAS MARKER 150' & 212' NW, 216', 245' & 253' NE



PROPANE TANK 314' N,
511' NE



FIELD ROAD 455' S



DITCH 525' W



DOMESTIC SEPTIC 578' SW



WATER MARKER 206' NE

LEGEND

X - REFERENCE POINT

ALL DISTANCES ARE APPROXIMATE.

NEAREST: BUILDING 54' NE,
PUBLIC ROAD 110' N (CR), ABOVE GROUND UTILITY 90' N,
RAILROAD (ABANDONED) 1045' NE, PROPERTY LINE 121' N

