

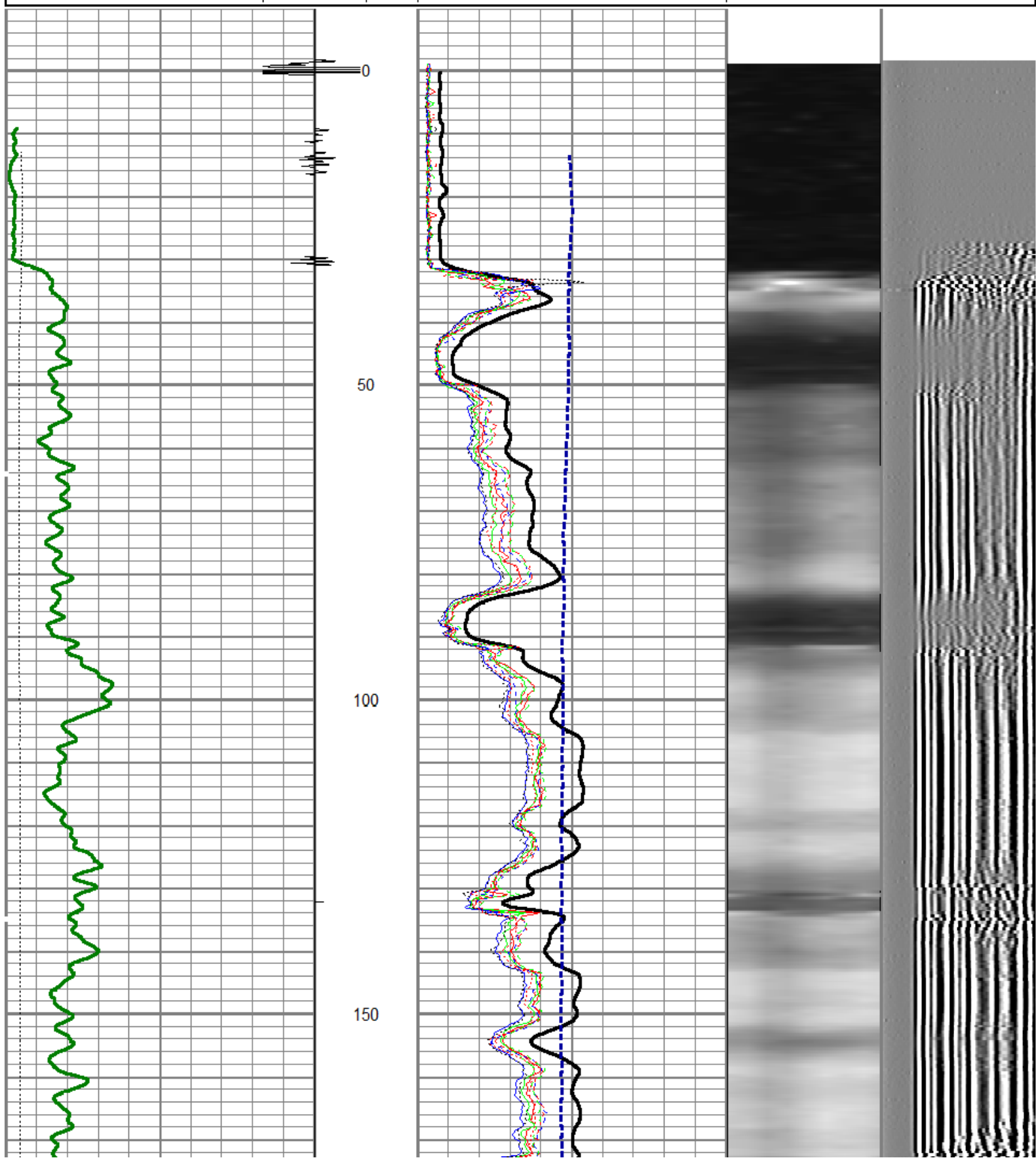
Mesa Wireline

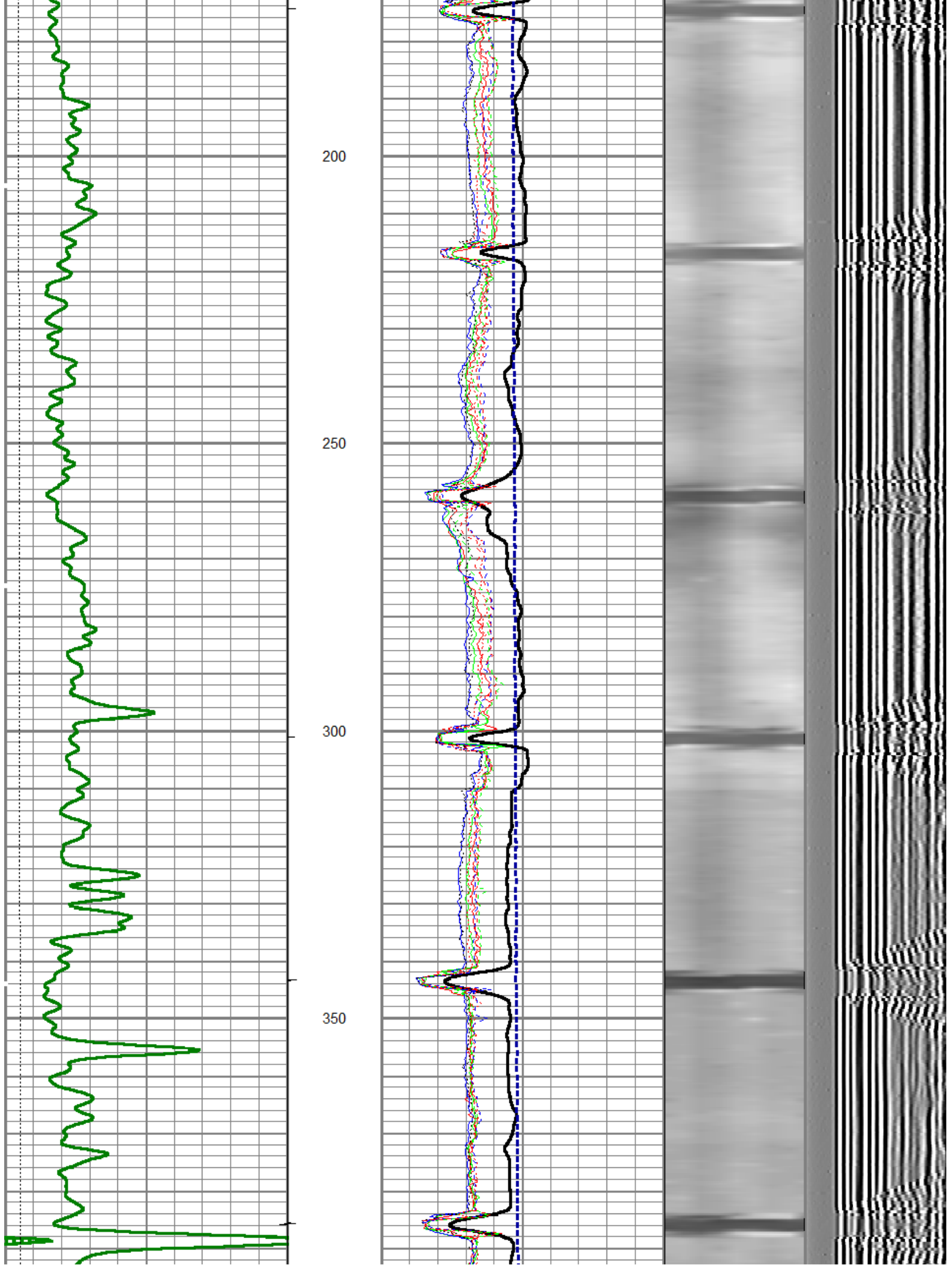
Database File: cc 697-09-04b.db
Dataset Pathname: pass3
Presentation Format: rbt_fin
Dataset Creation: Sun Feb 05 19:06:37 2012
Charted by: Depth in Feet scaled 1:240

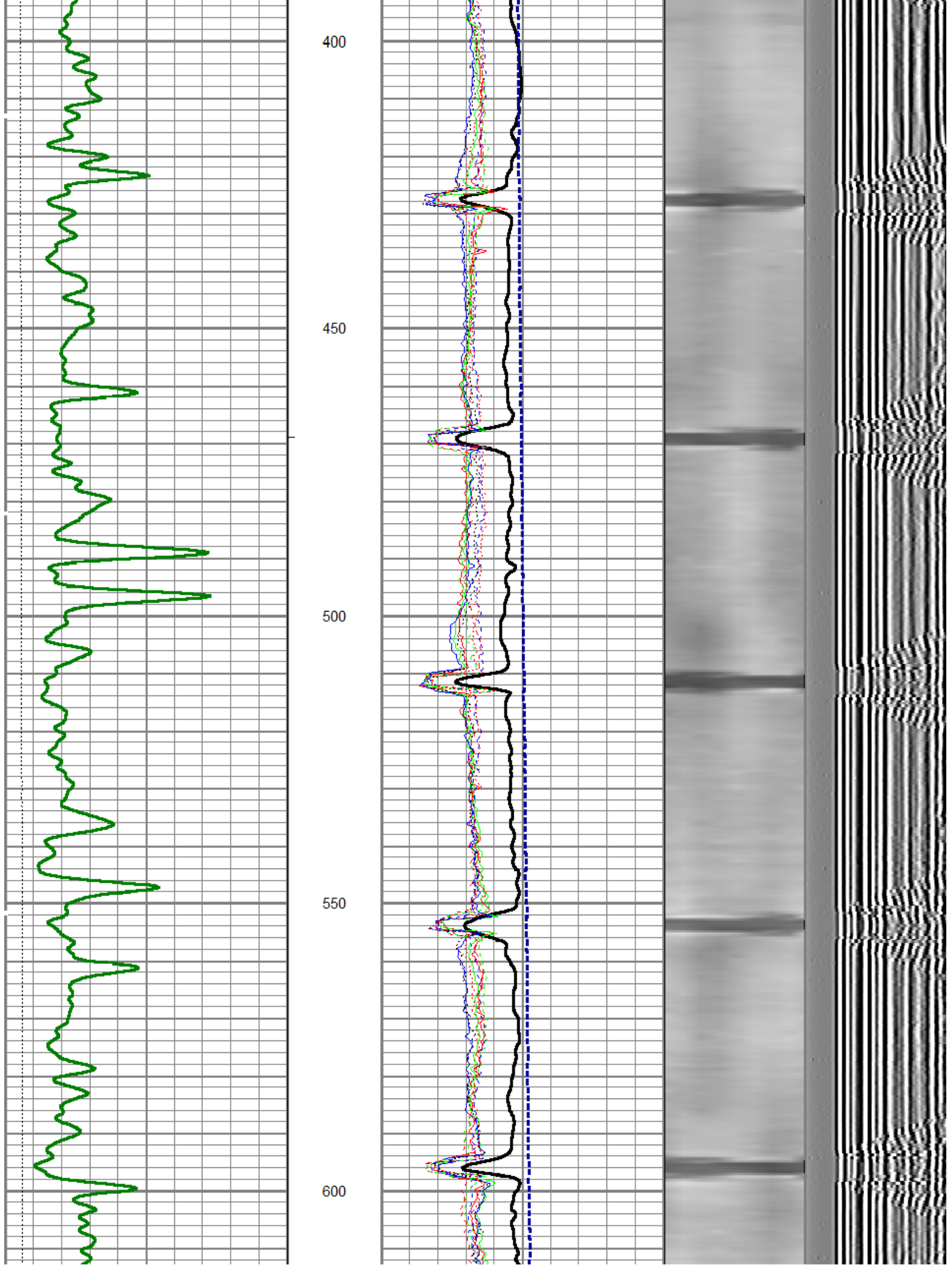
0	Gamma Ray (GAPI)	200
0	LTEN (lb)	4000
		CCL

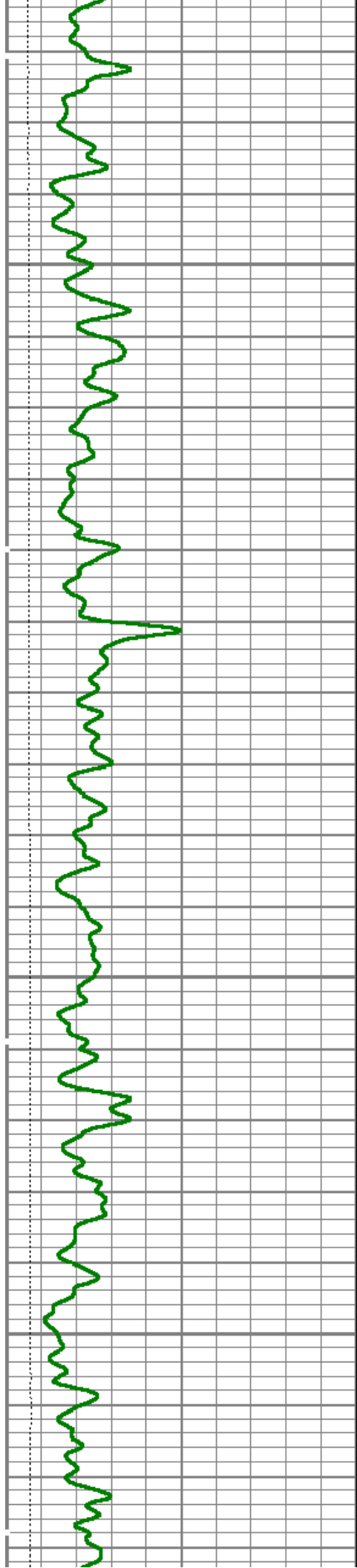
0	Amplitude (mV)	100
0	temp (degF)	100
0	TT3FT (usec)	208

1	SECTORS	8	Variable Density
0		70	200 1200







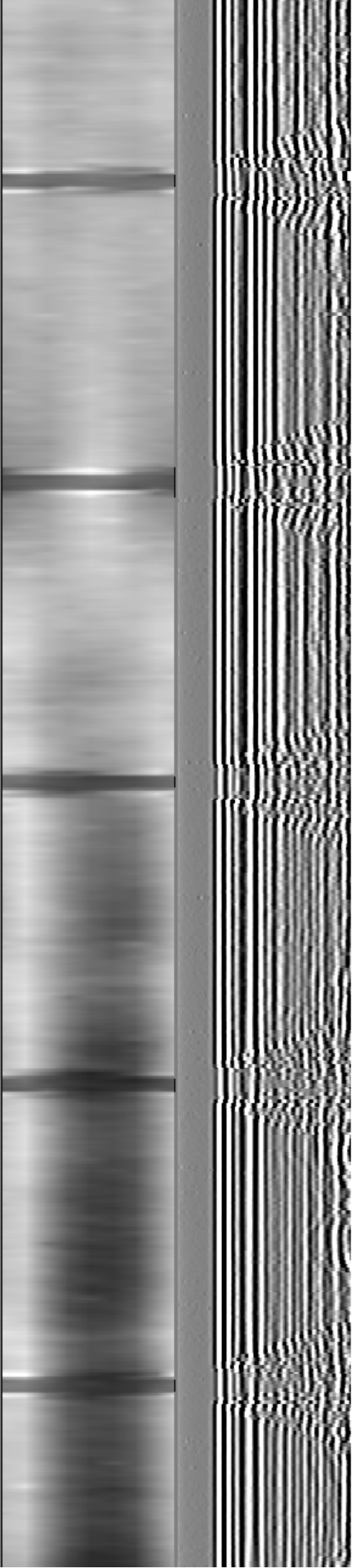
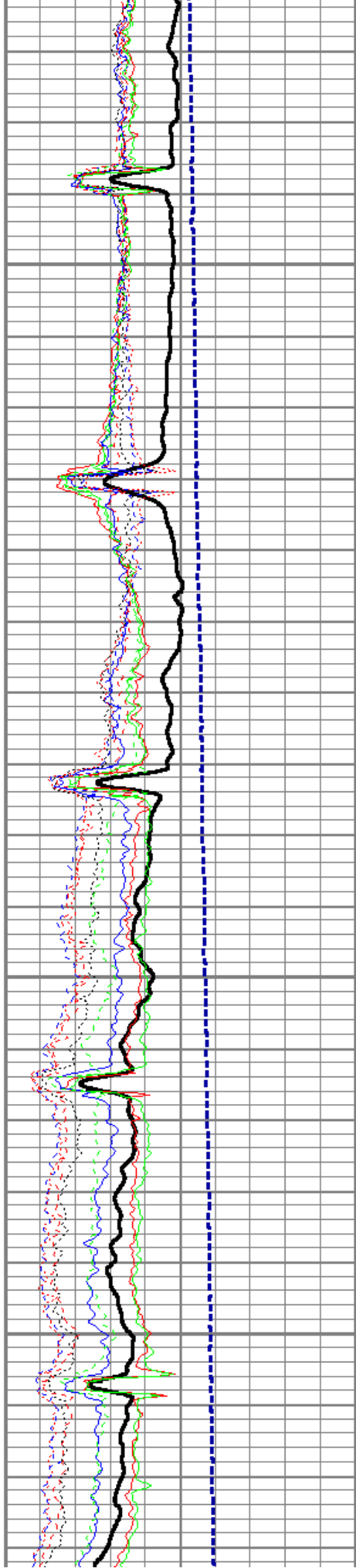


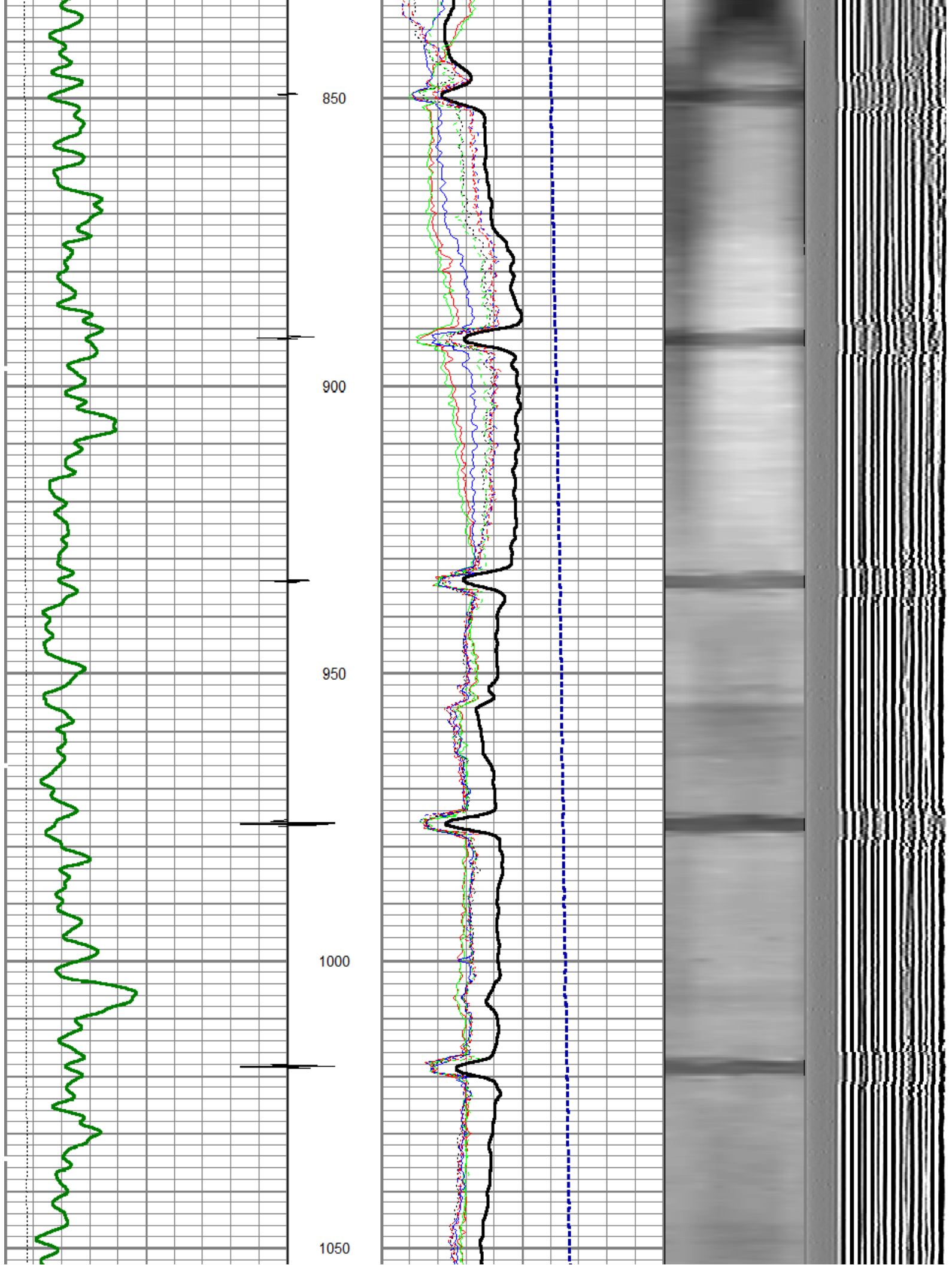
650

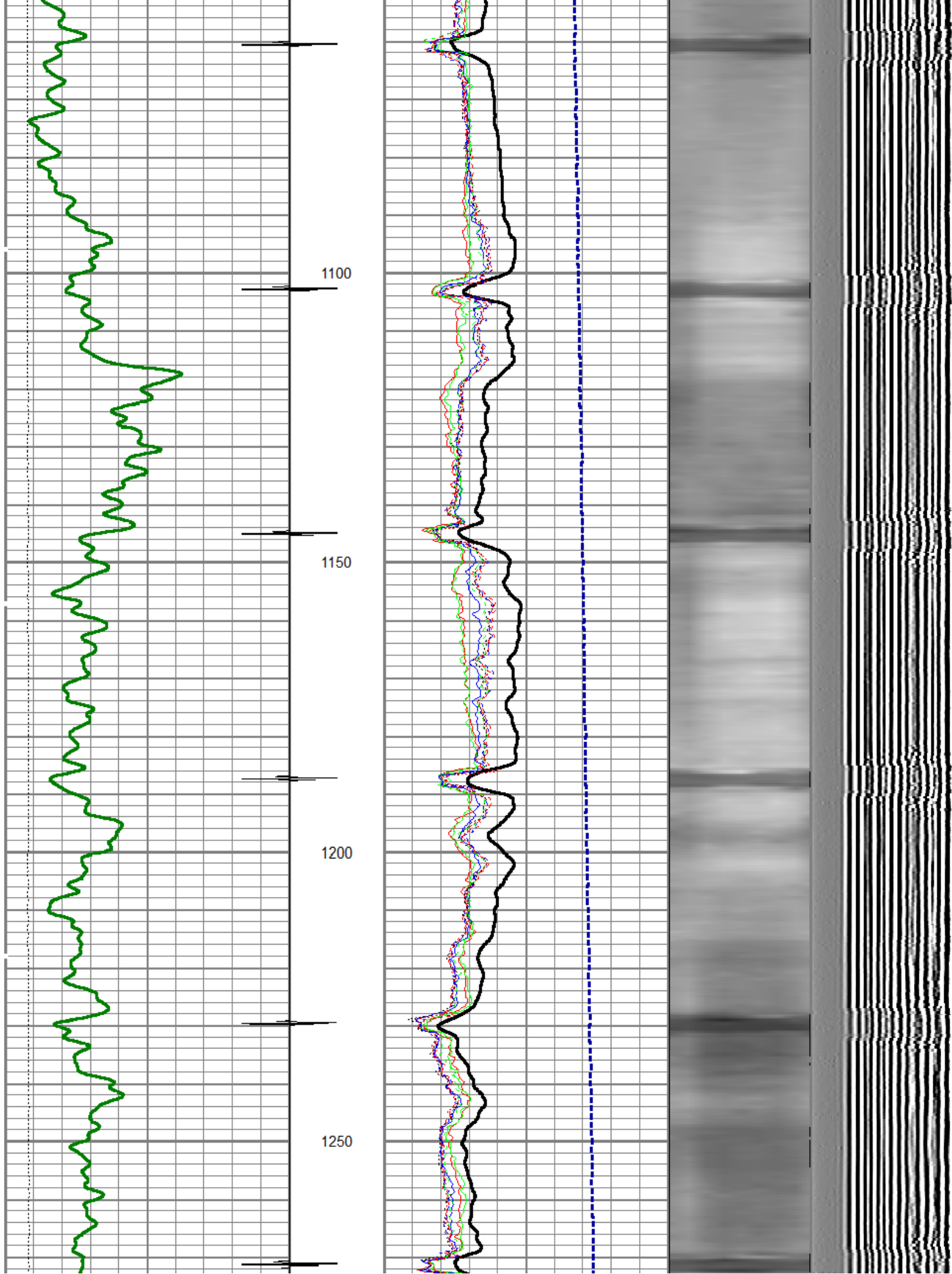
700

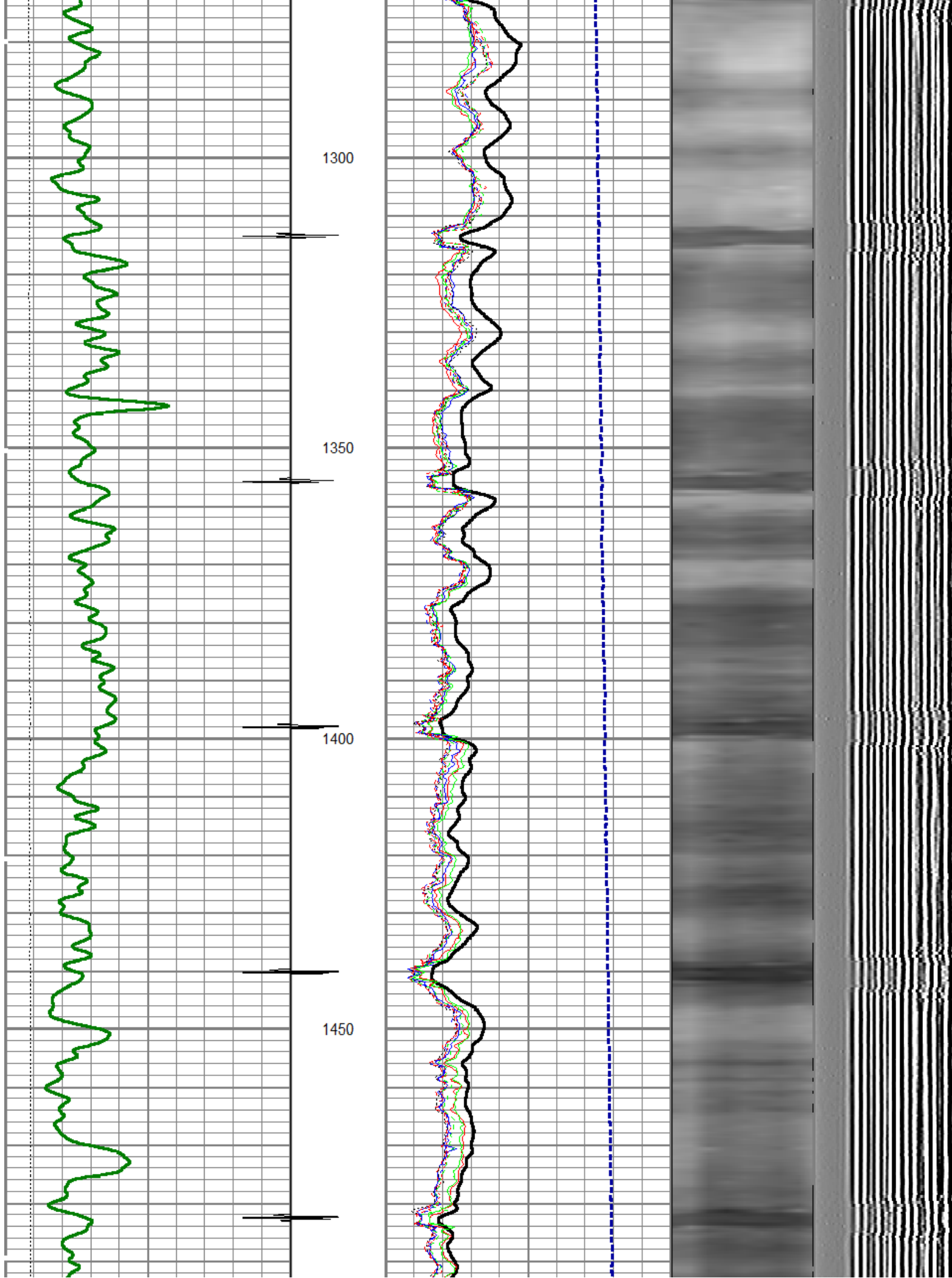
750

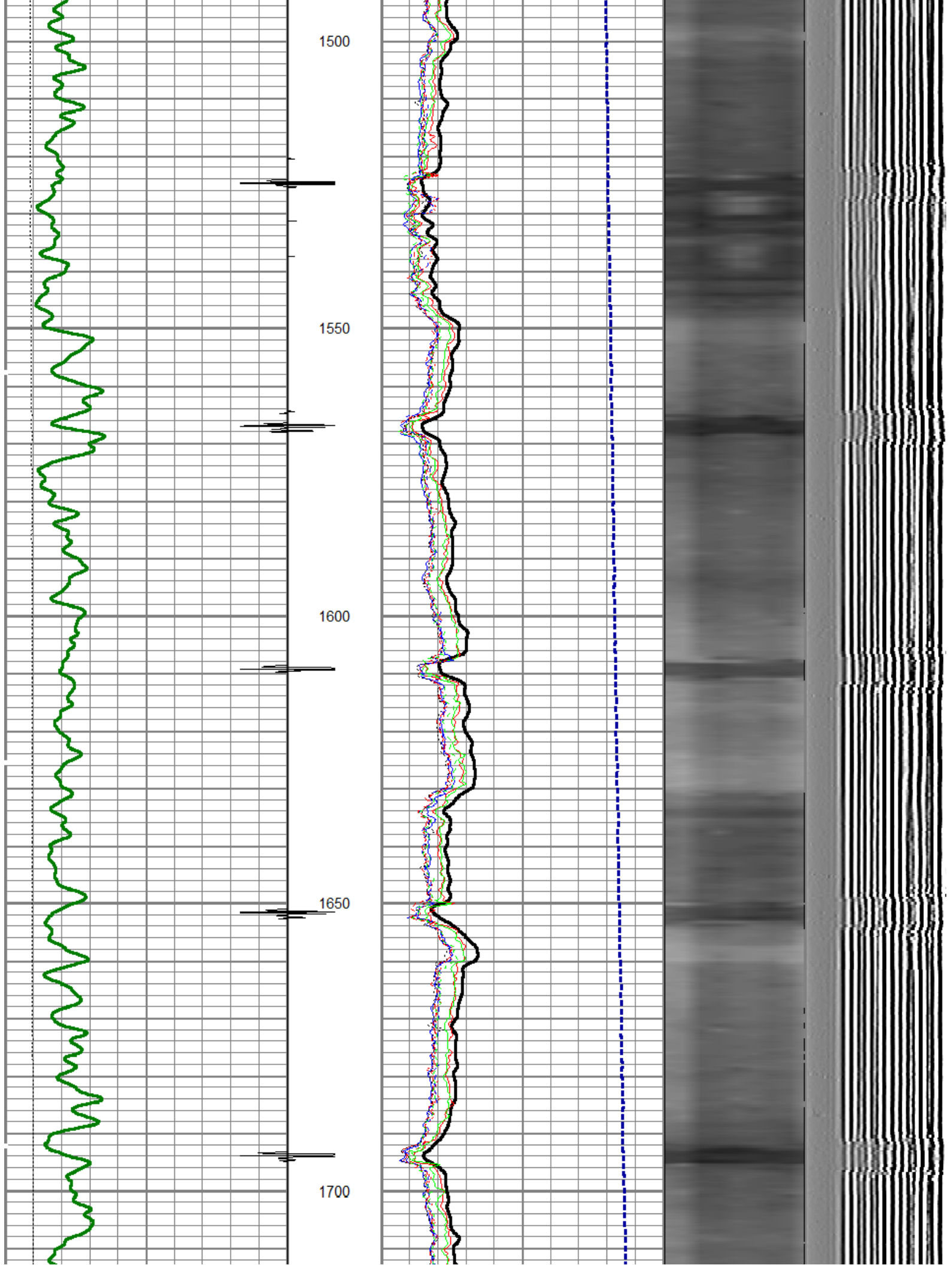
800

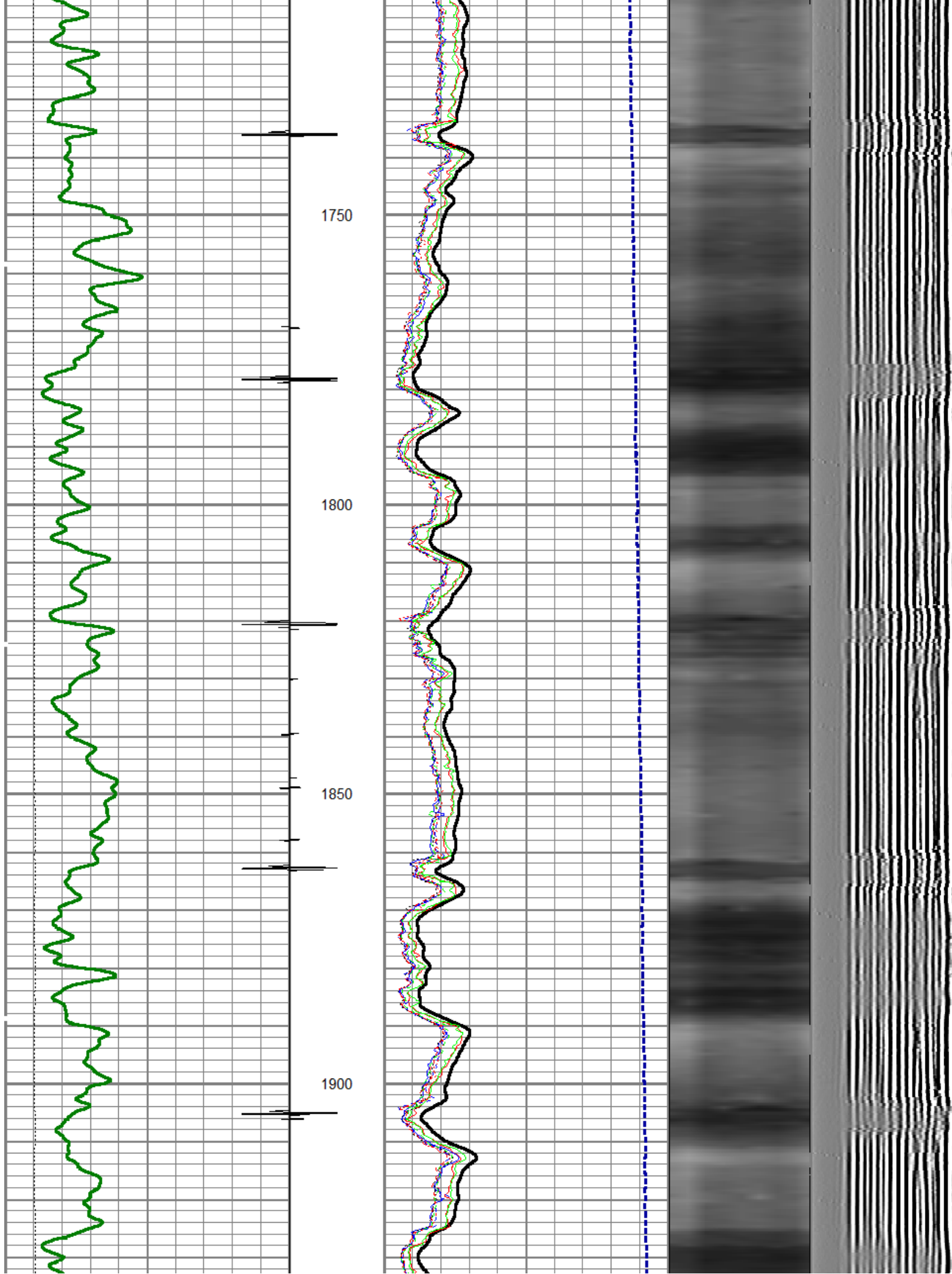


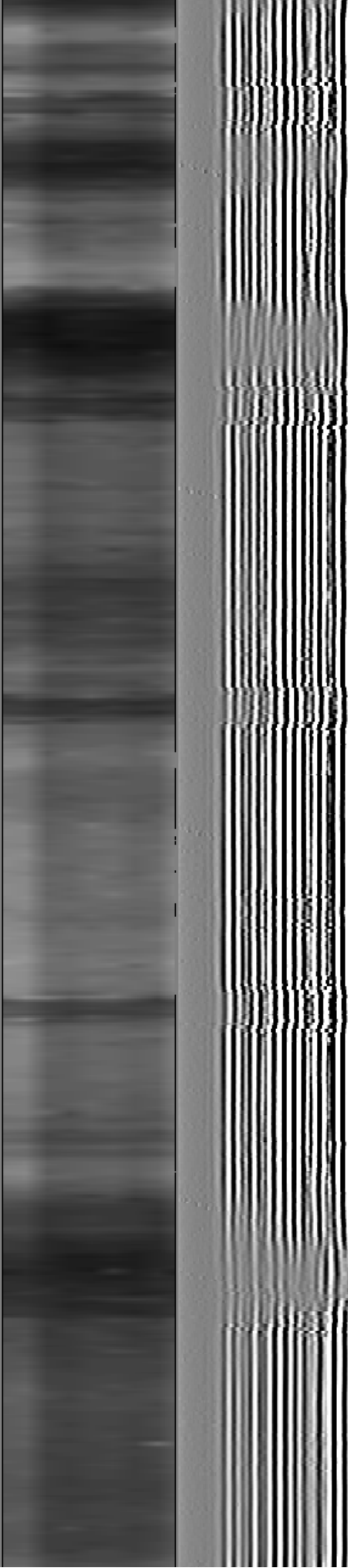
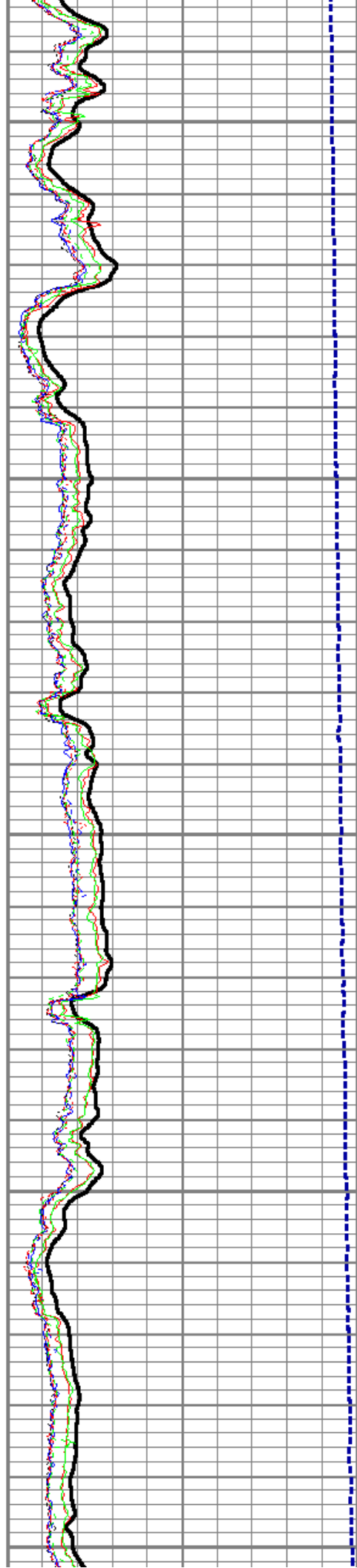
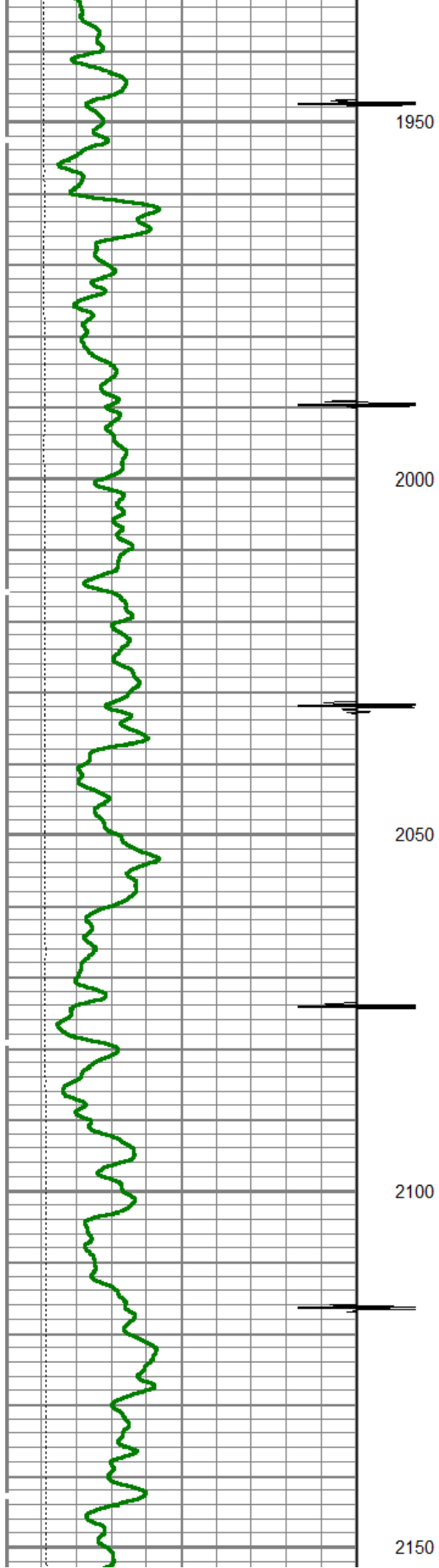


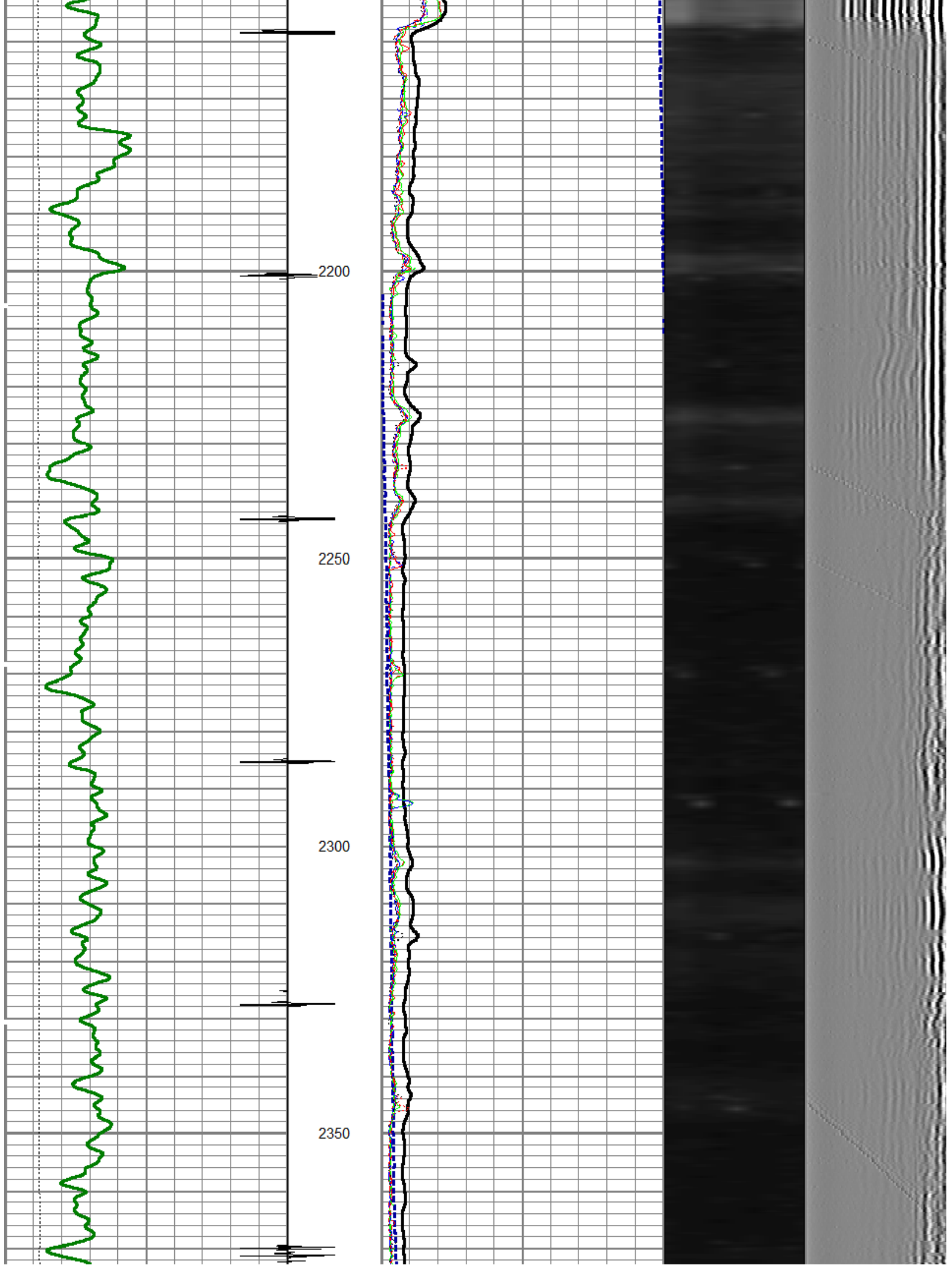


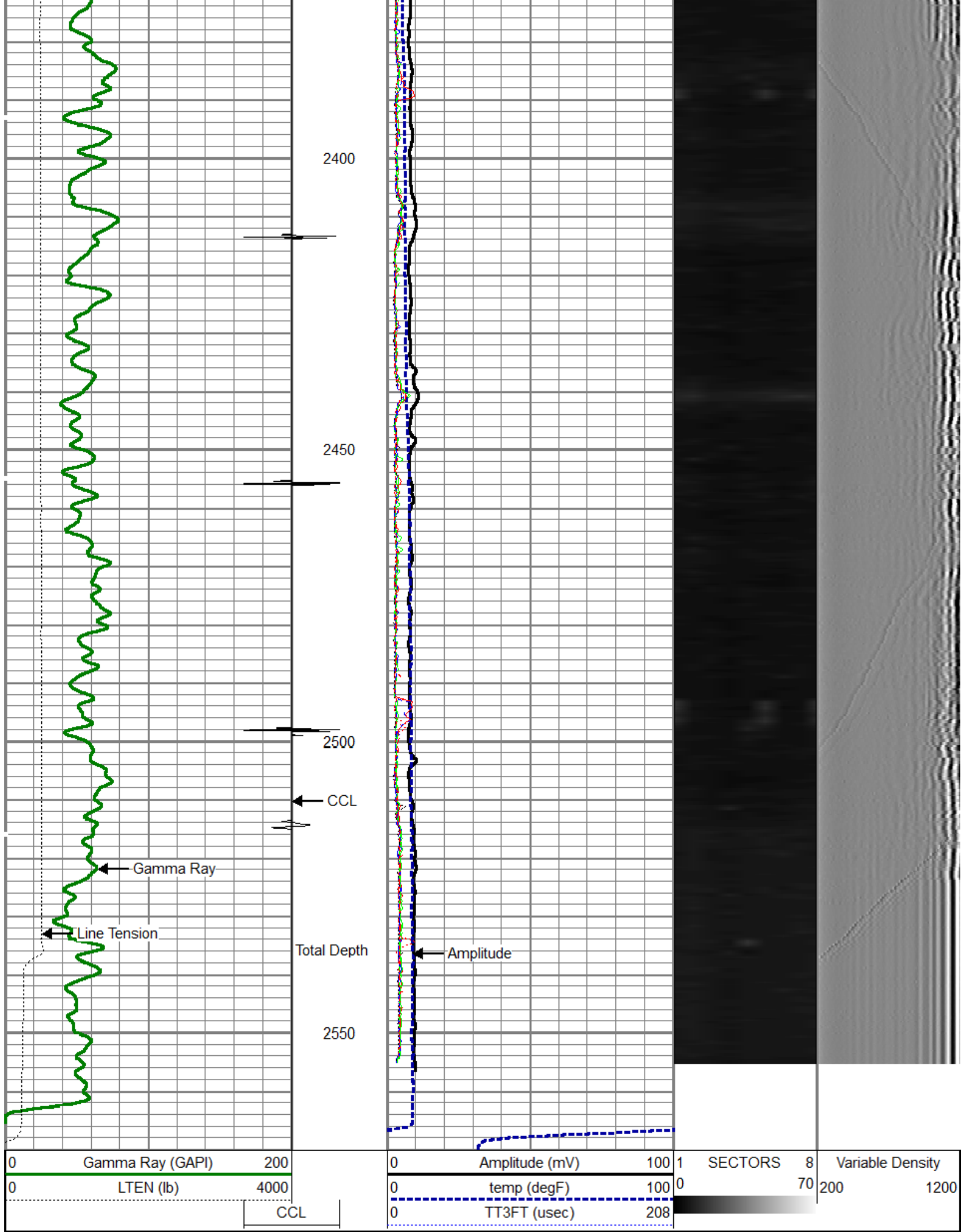












			titan	1.00	1.69	2.00
CCL	21.68		SNDX_CCL-SNDX_3_13_CCL (000001) CSS Gamma Ray/CCL (CCL Section)	1.92	3.13	11.02
			SONDEX	2.71	2.75	32.00
WVF3FT	13.92					
WVFS1	13.92		SNDX_RBT-007 (000002) Radial Bond Tool - Analog 3 1/8	9.47	3.13	140.00
WVFS2	13.92					
WVFS3	13.92					
WVFS4	13.92					
WVFS5	13.92					
WVFS6	13.92					
WVFS7	13.92					
WVFS8	13.92					
WVF5FT	12.92					
			SONDEX	2.71	2.75	32.00
GR	5.17		SNDX_GR-SNDX_3_13_GR (000001) Sondex Production Gamma Ray	2.94	3.13	22.05
			TEMP-SNDX_TEMP (SNDX_TEMP_01) Sondex Production Temperature Tool	3.14	1.63	10.00
TEMP	0.58					



Company

OXY USA

Well

CC 697-09-04B

Field

CASCADE CREEK

County

GARFIELD

State

CO