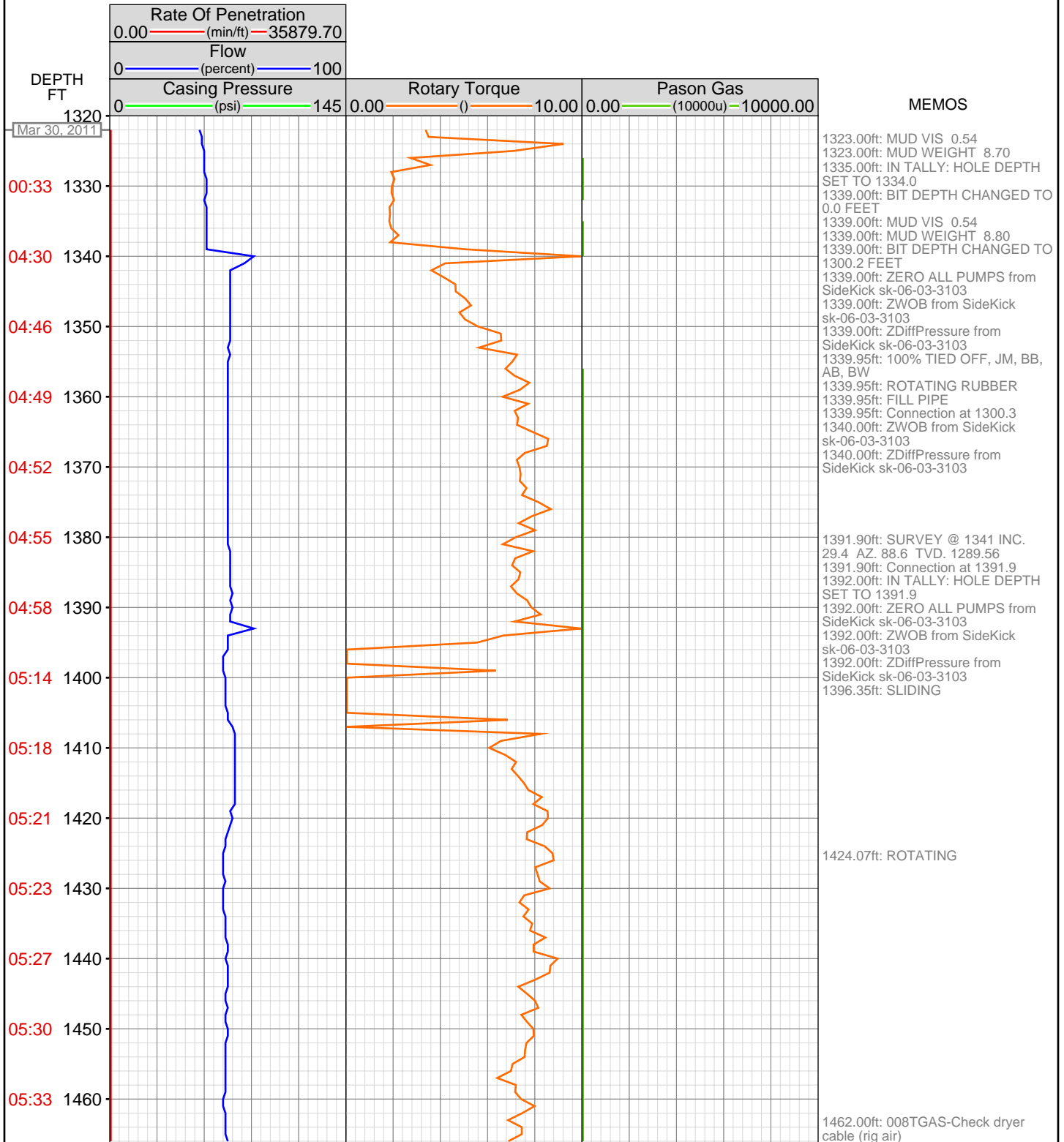


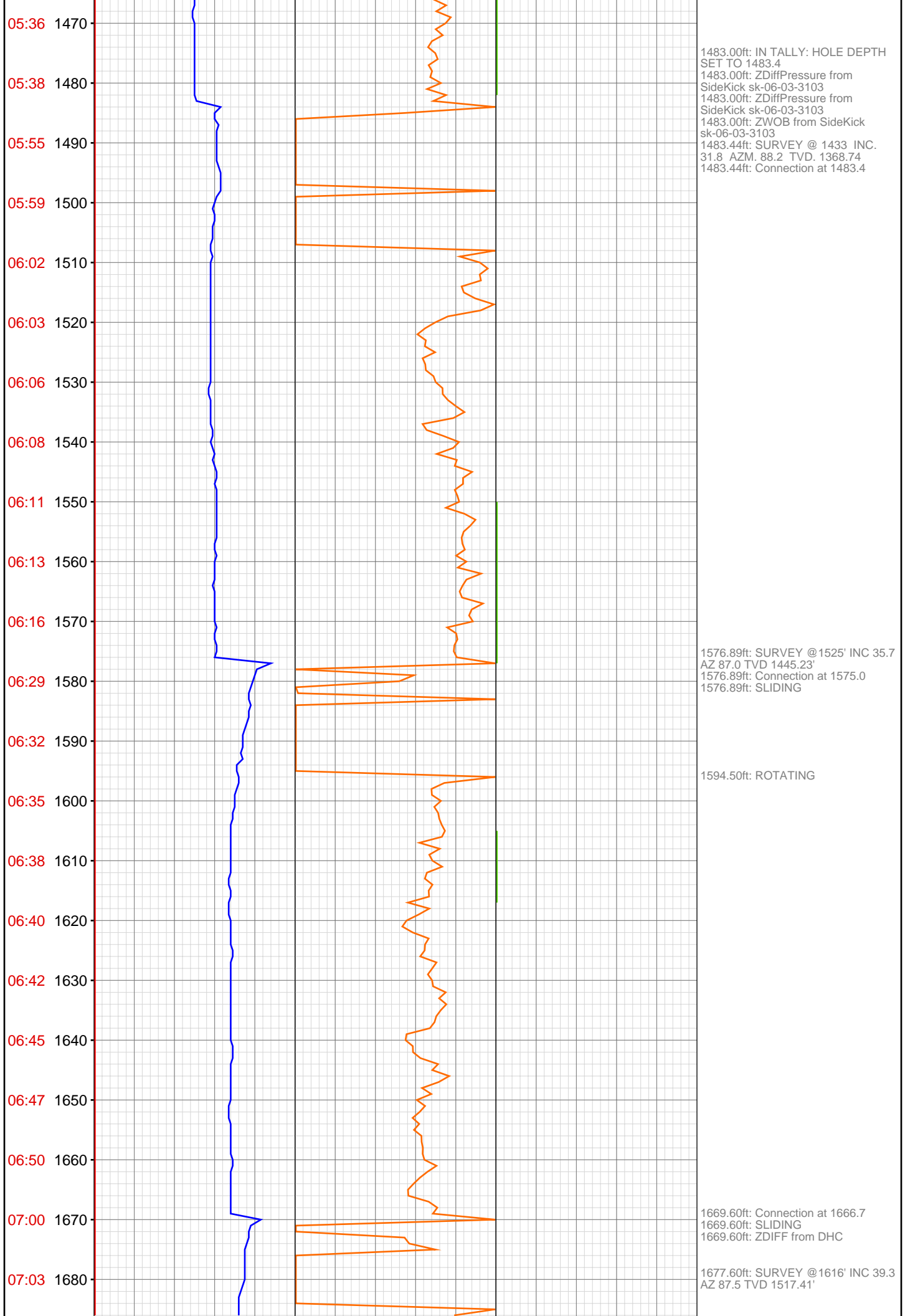
DataHub EDR Log

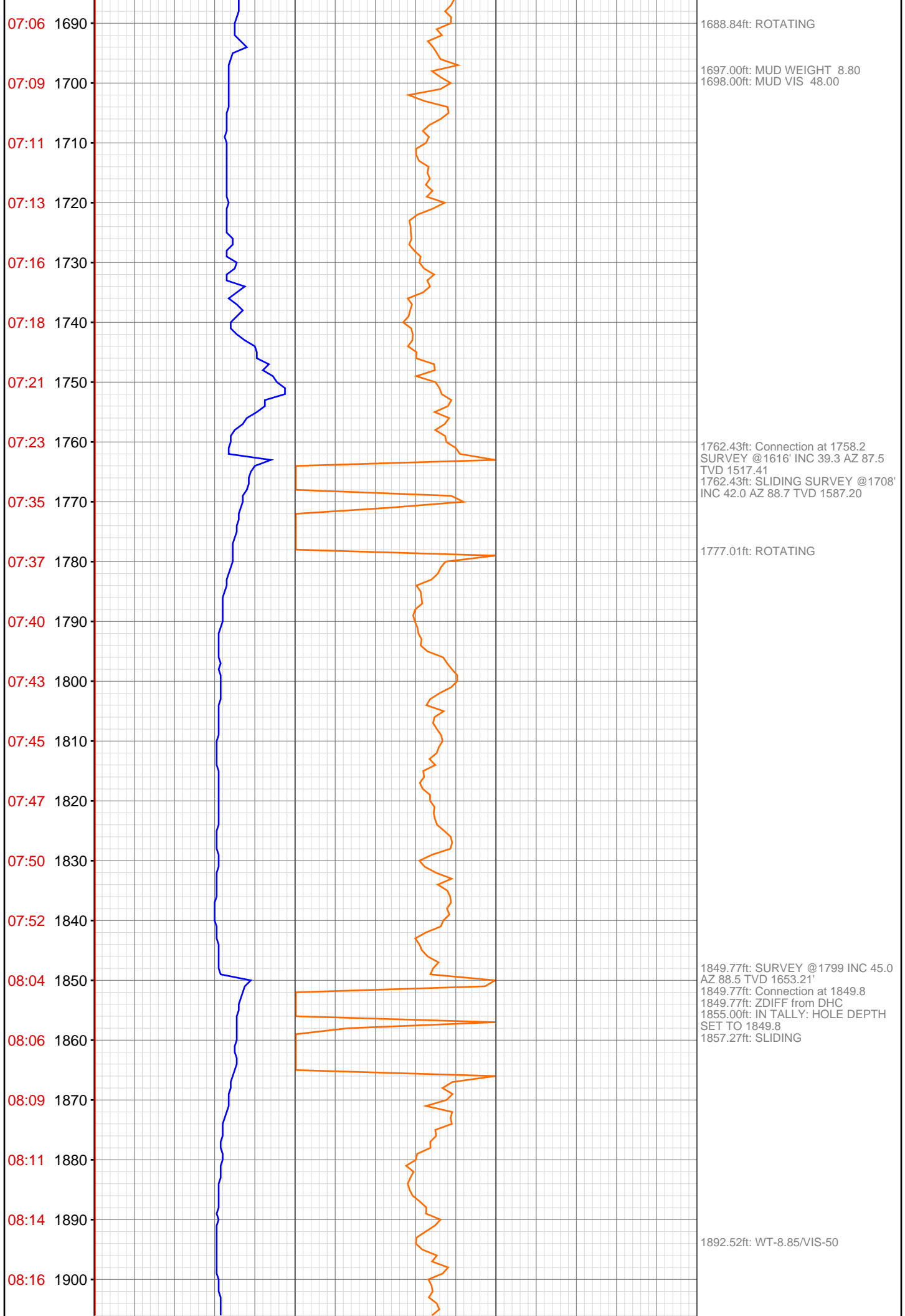
Thu Apr 07, 2011 15:35:45
Well Dossier 1301399402
Marilyn Tucker

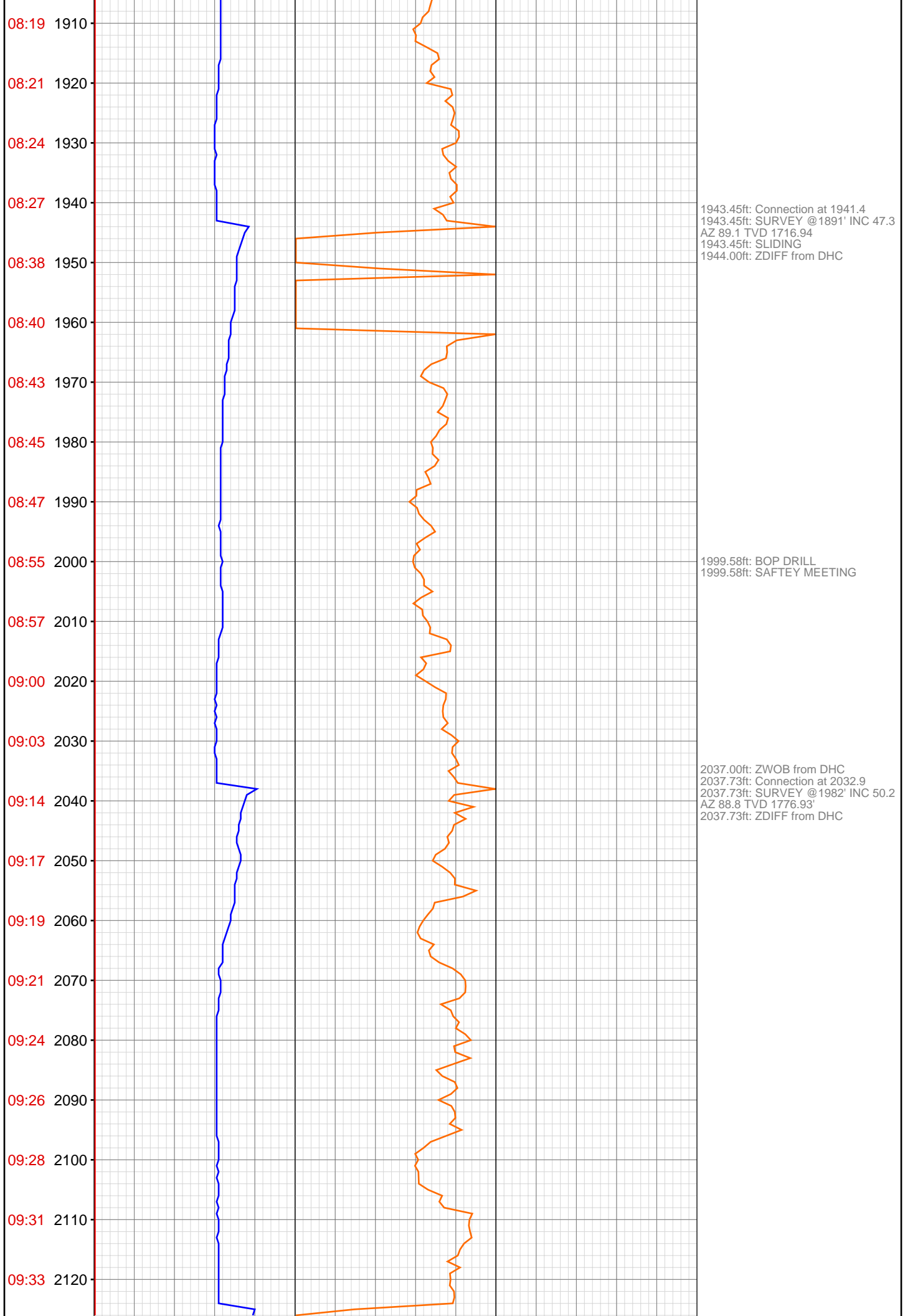
OPERATOR: EnCana Oil & Gas (USA), Inc.
WELL: NPMF 07B-16 H17 696
FIELD:
LOCATION: SENE Sec:17Twp:6SRng:96W Meridin 6
COUNTRY: USA
RIG: Pat-UTI 303

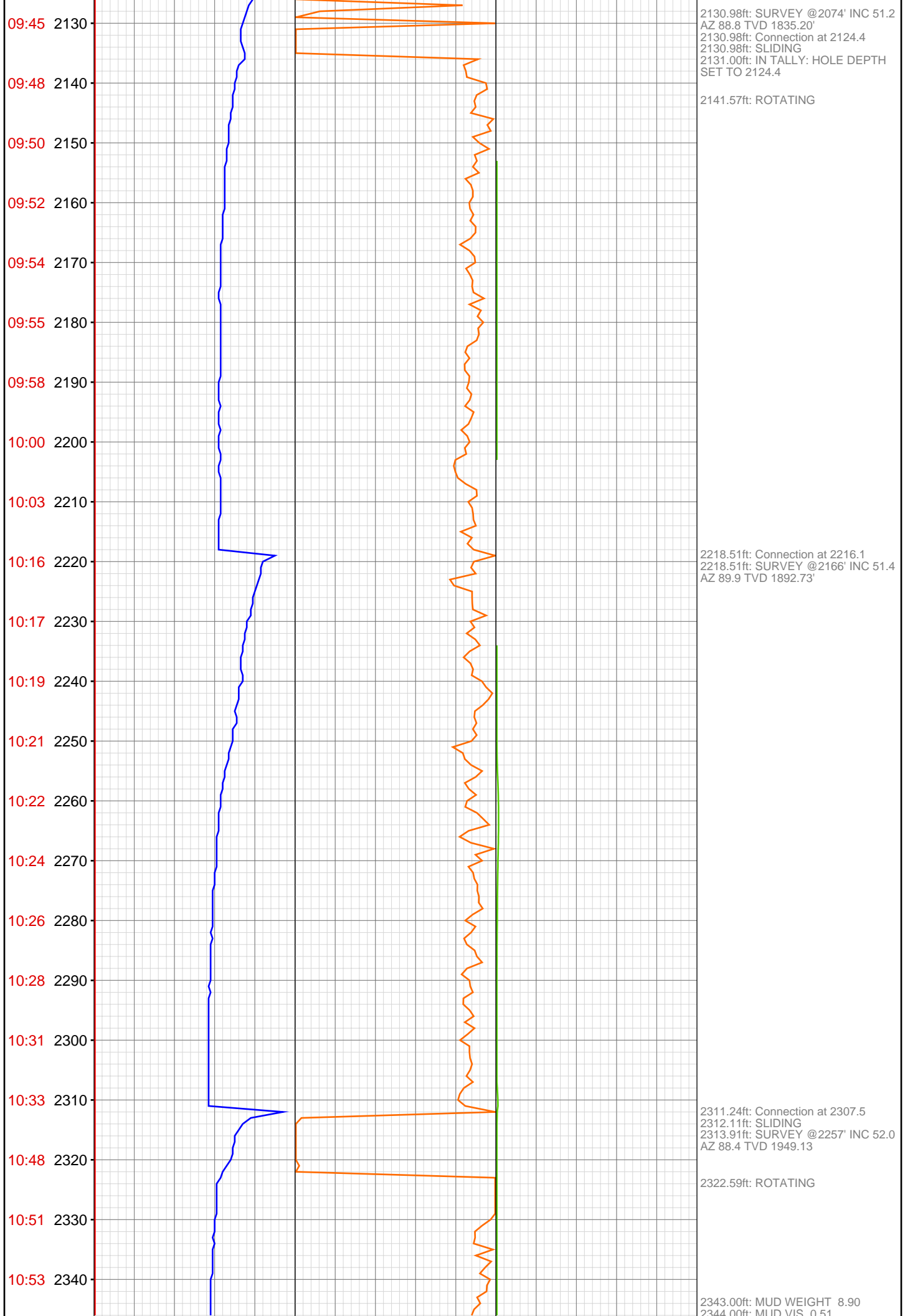
CONTRACTOR: Patterson-UTI Drilling Company
UNIQUE WELL ID: 05-045-18699-00
SPUD DATE: Mar 30, 2011 04:30
RELEASE DATE: Apr 04, 2011 18:00

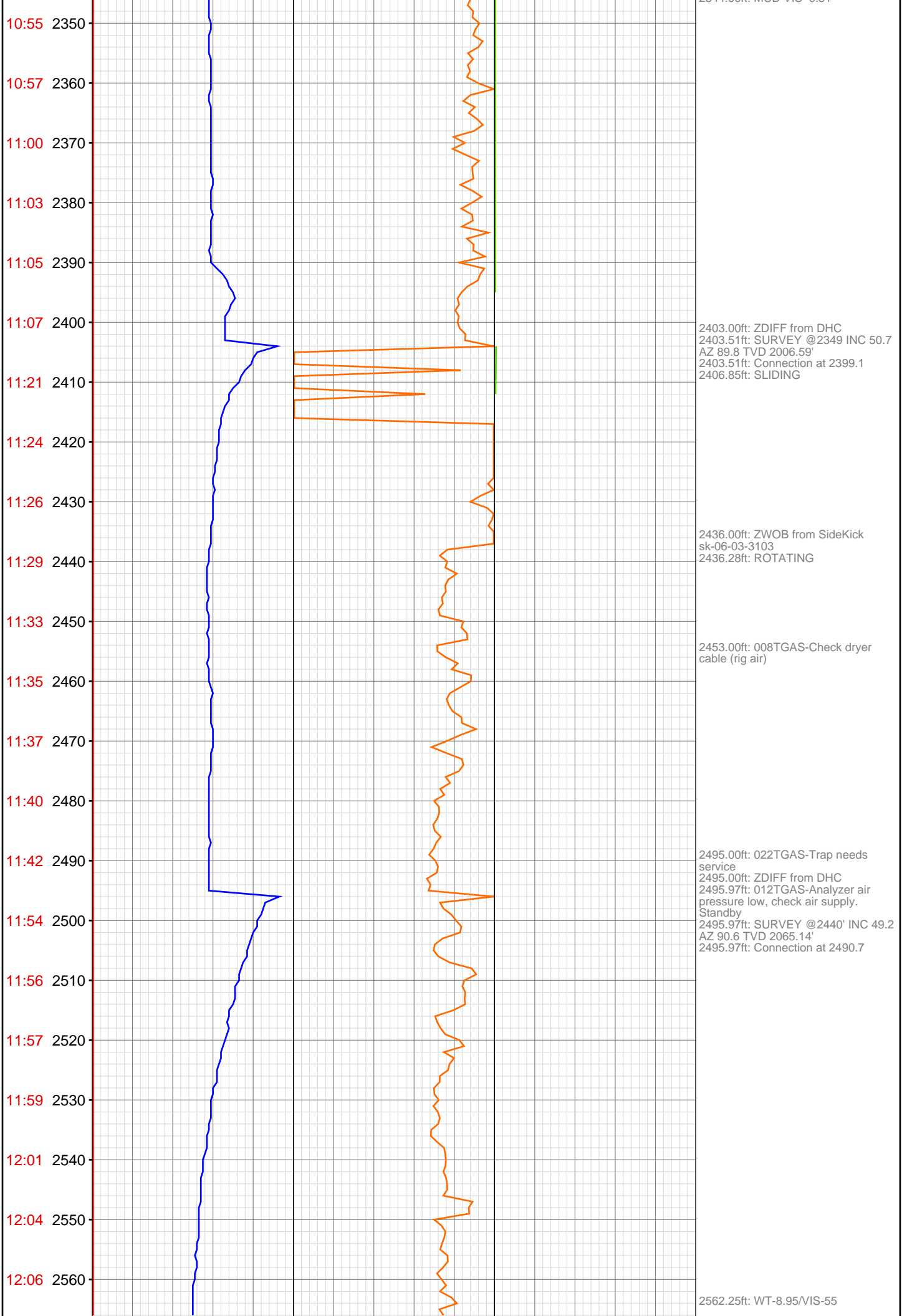


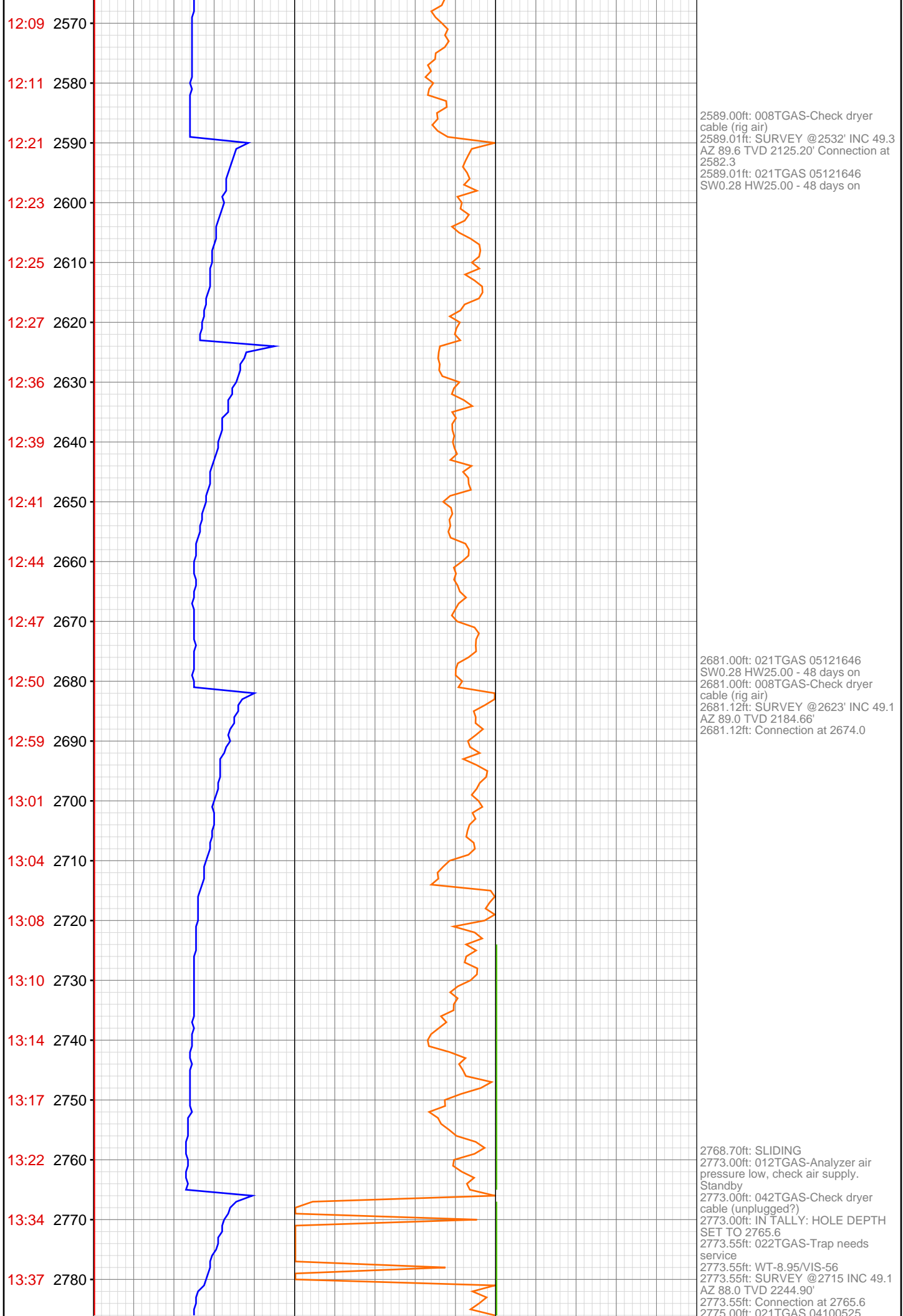


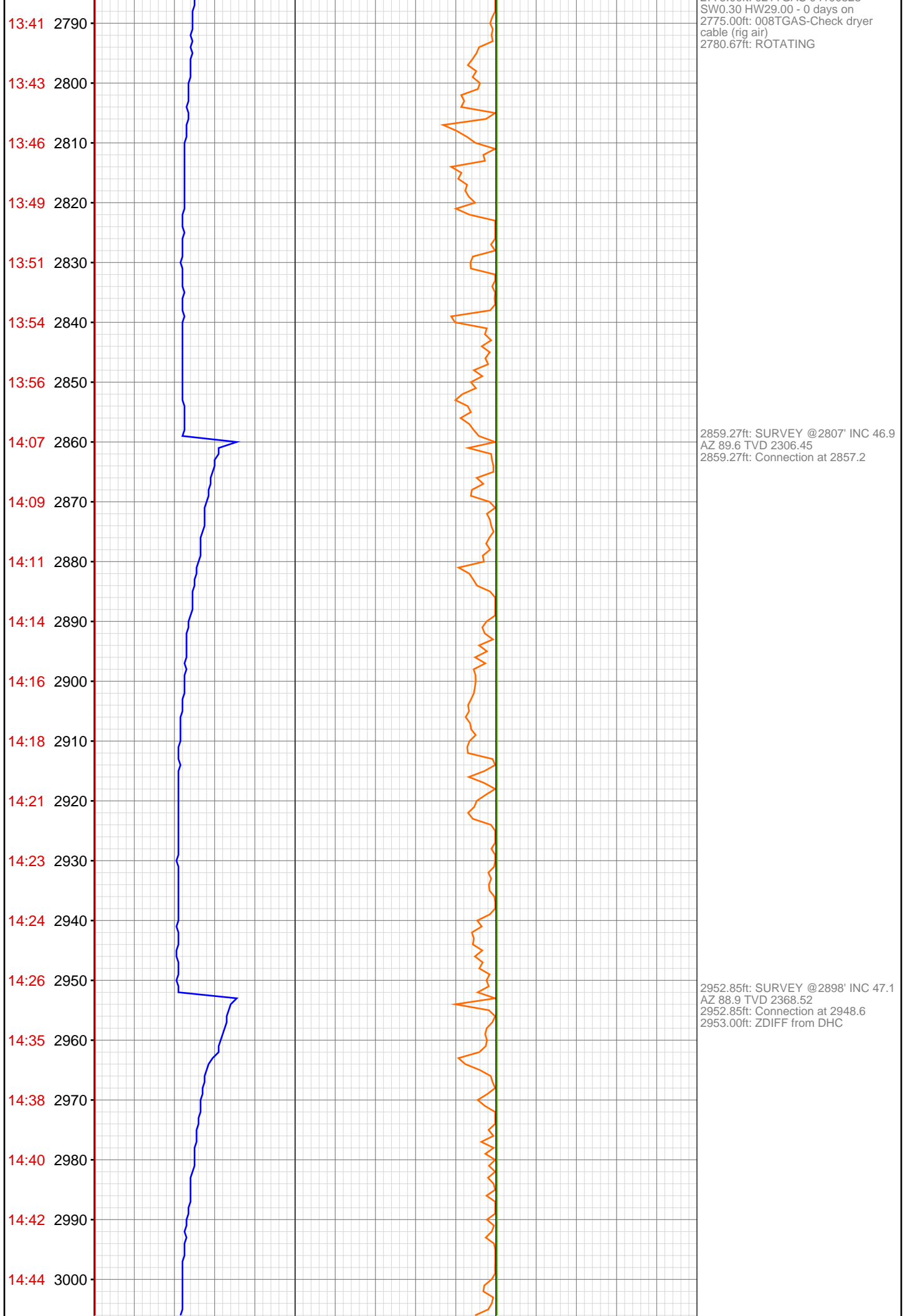


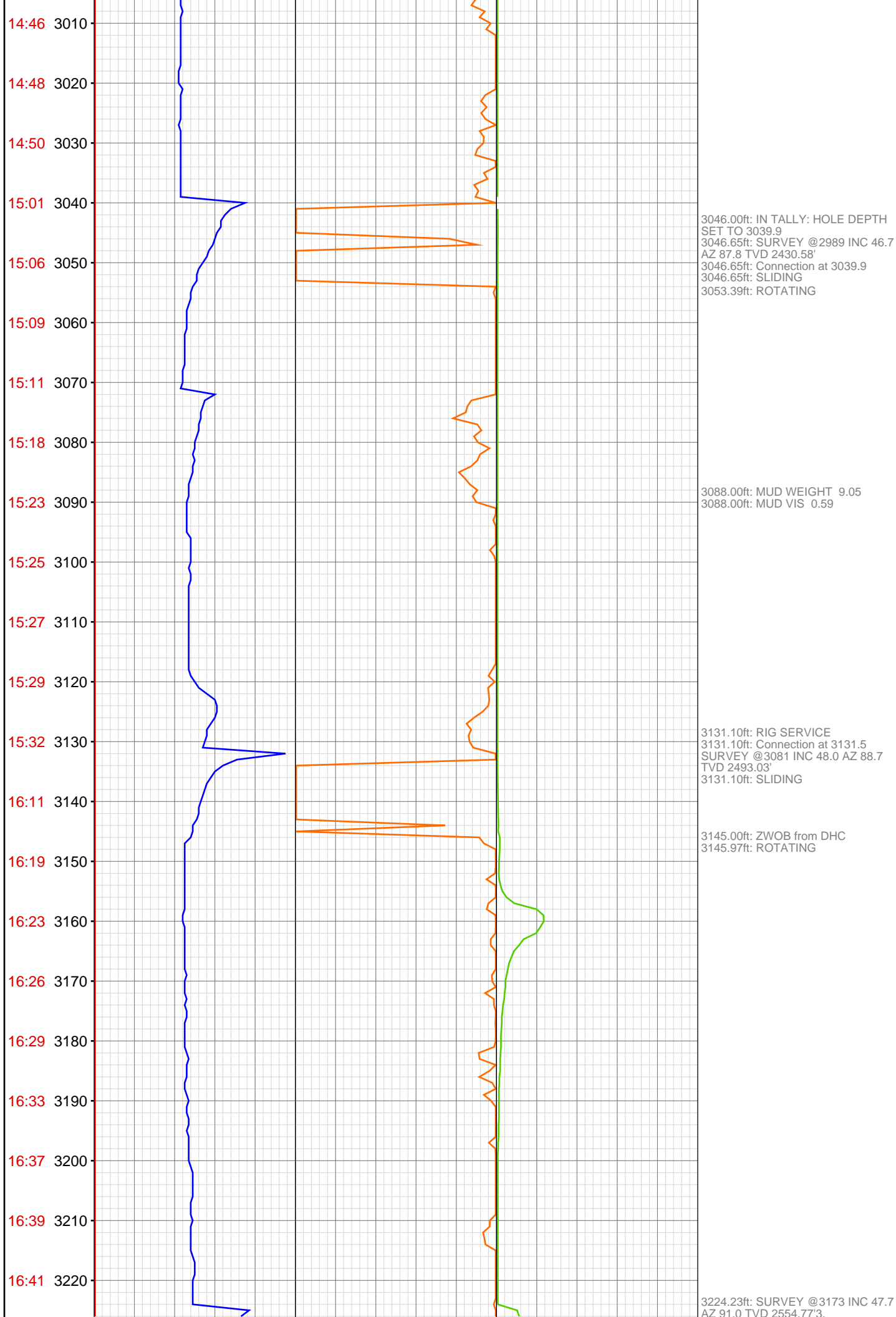


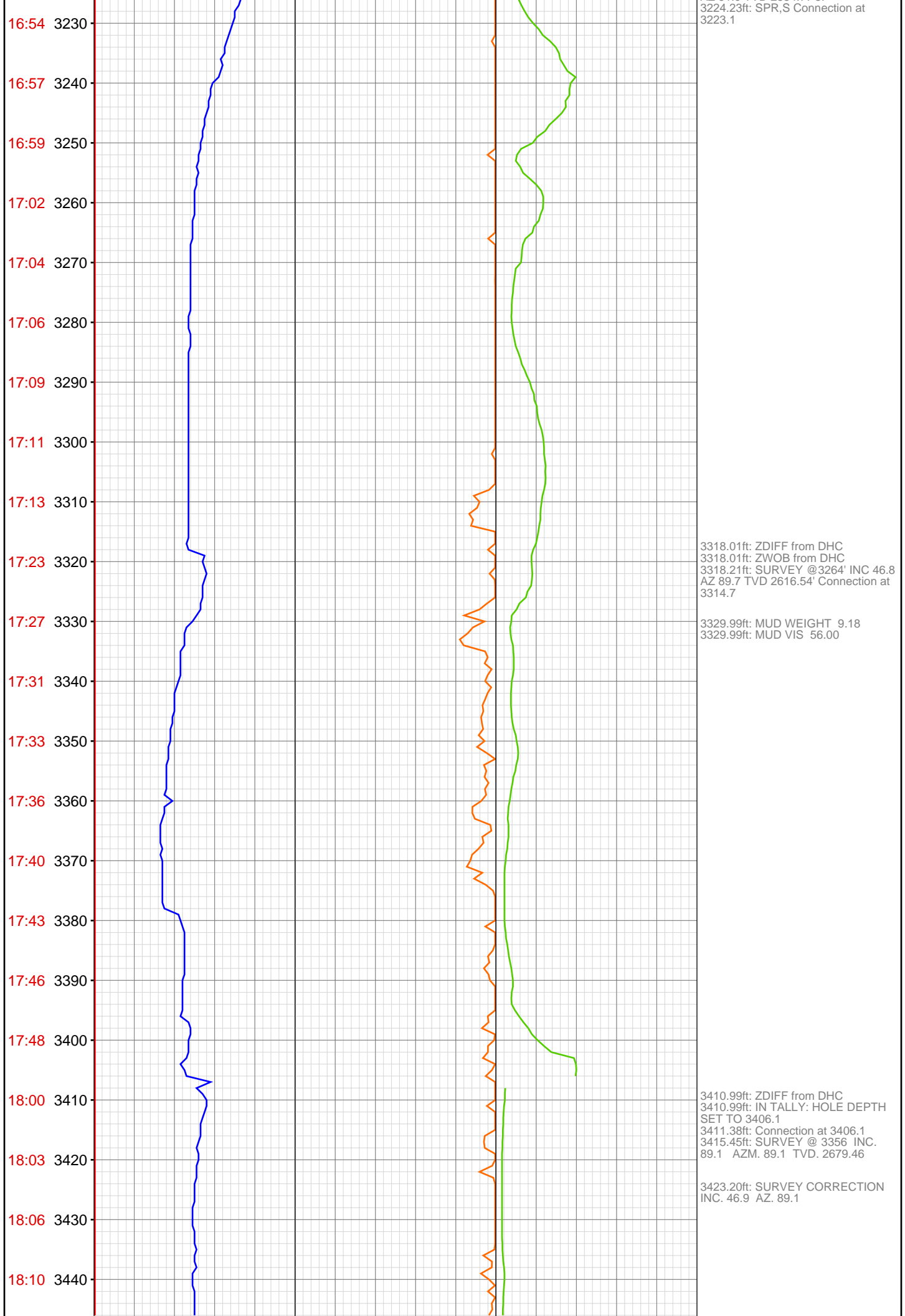


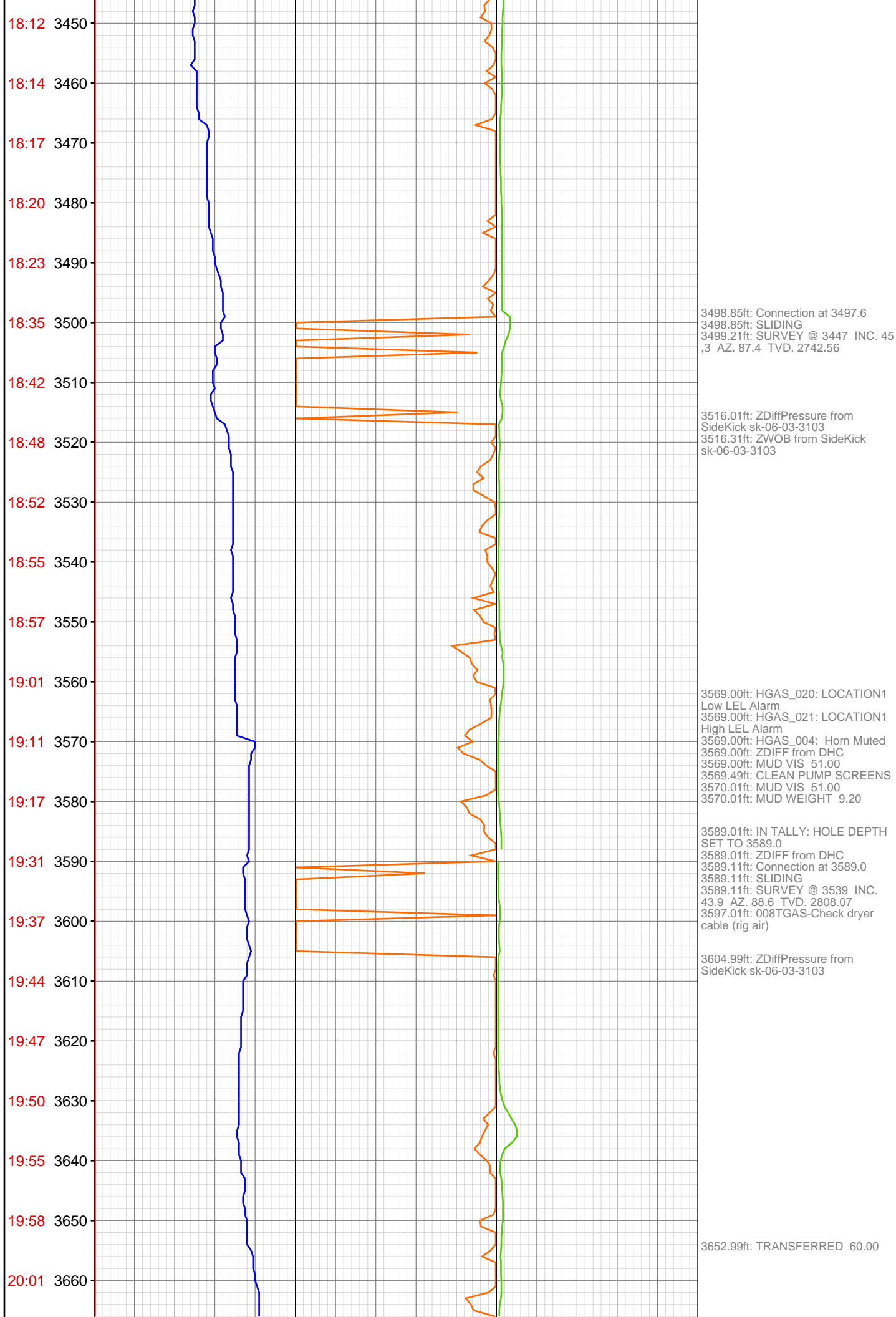


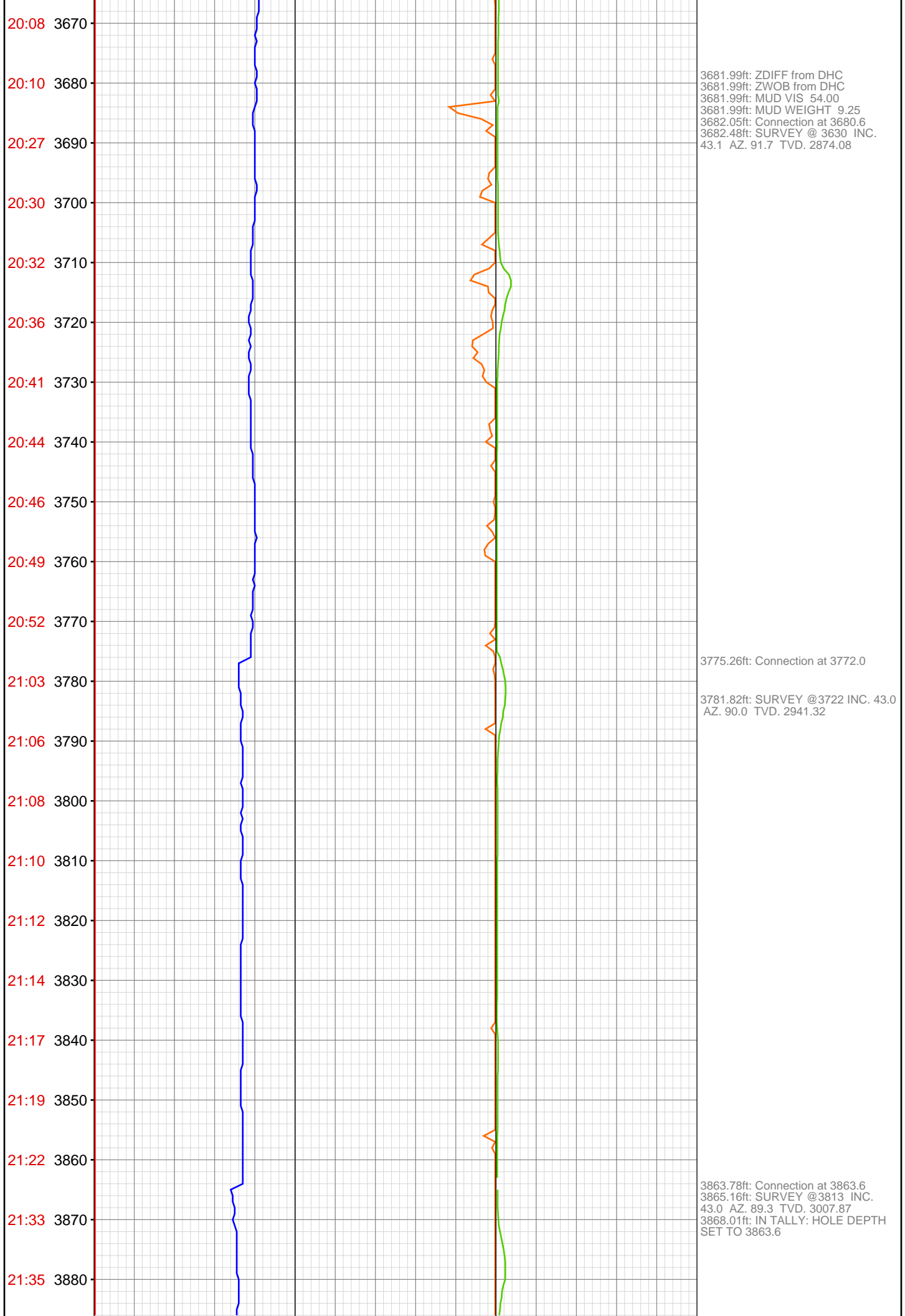


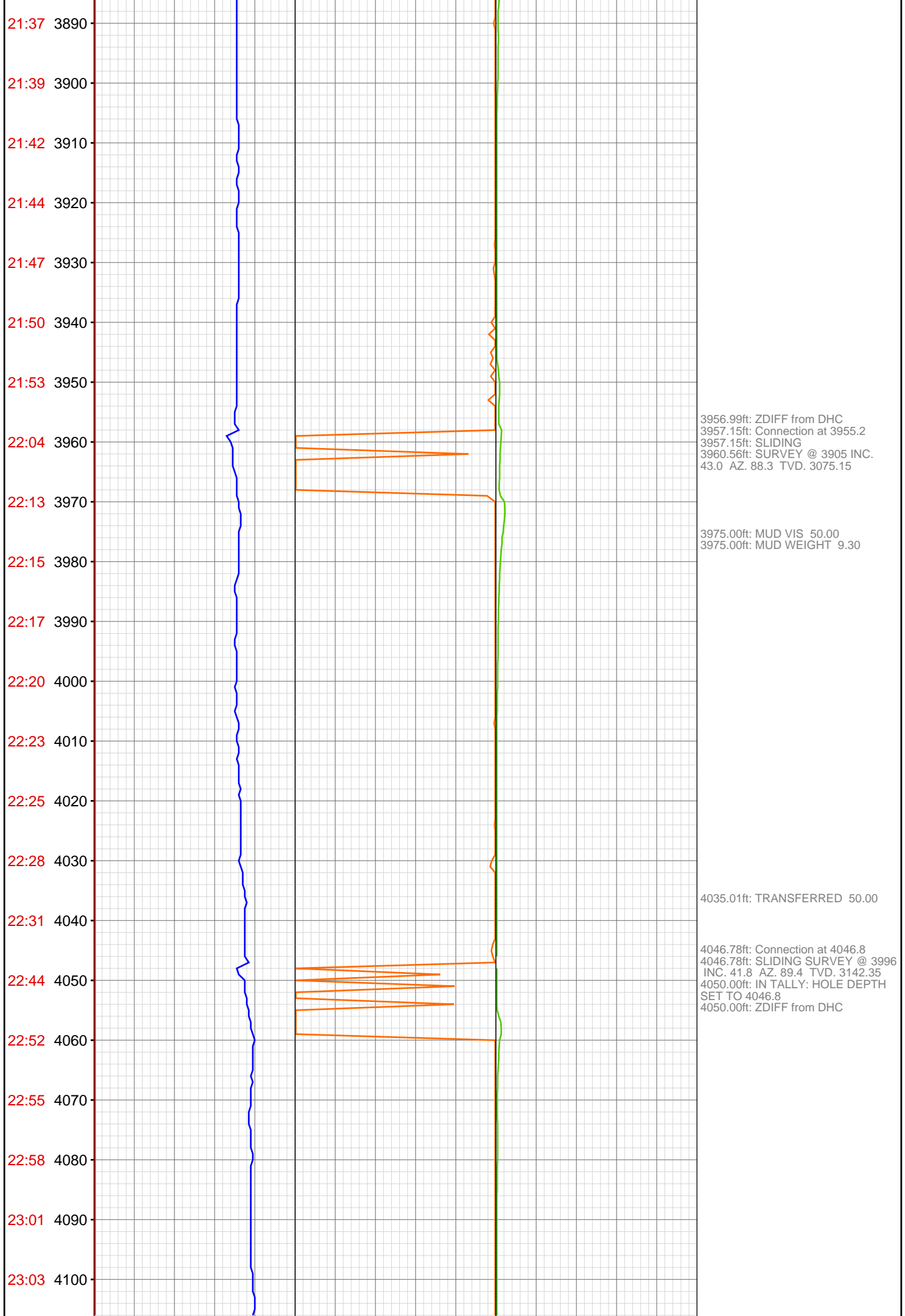


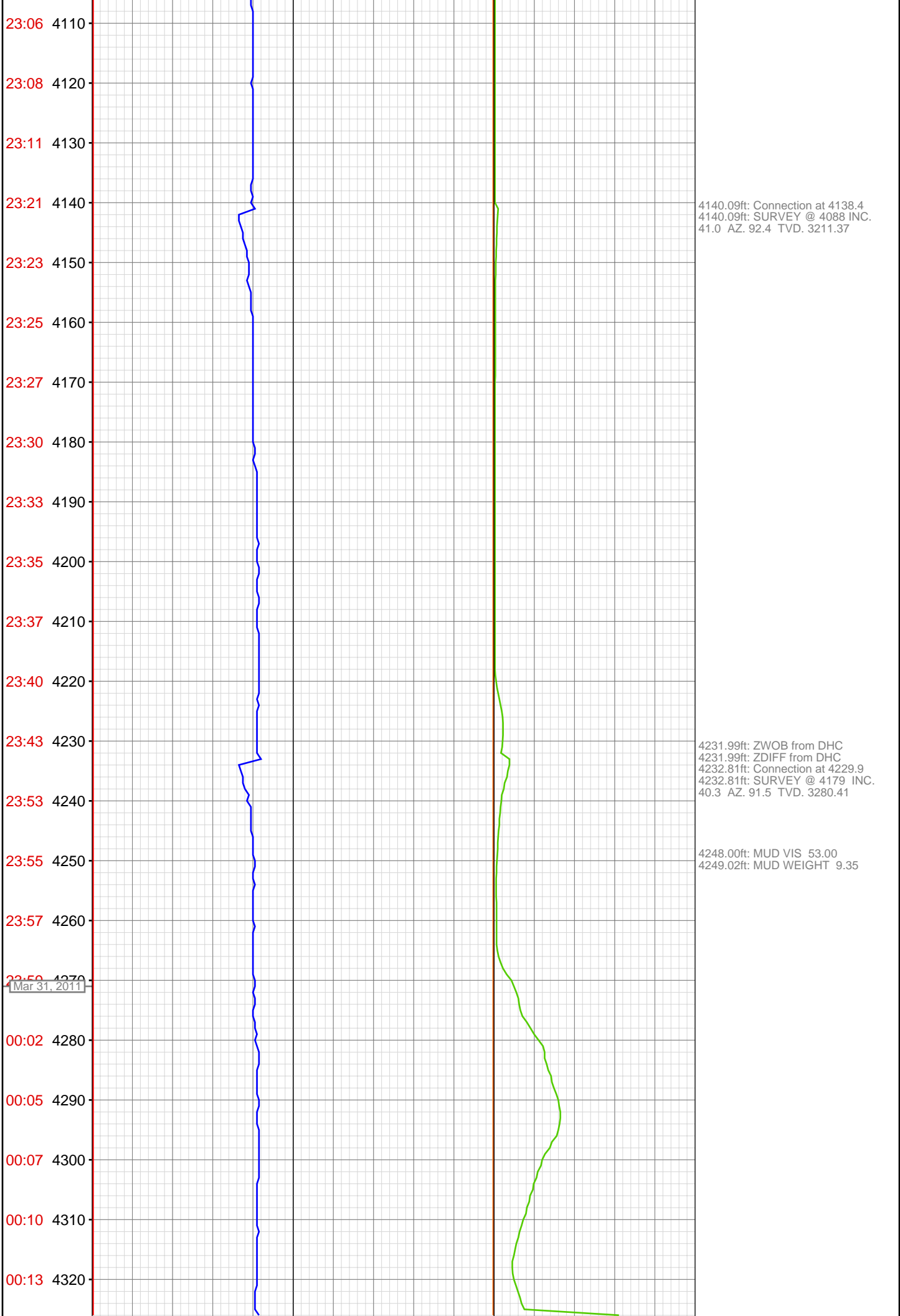


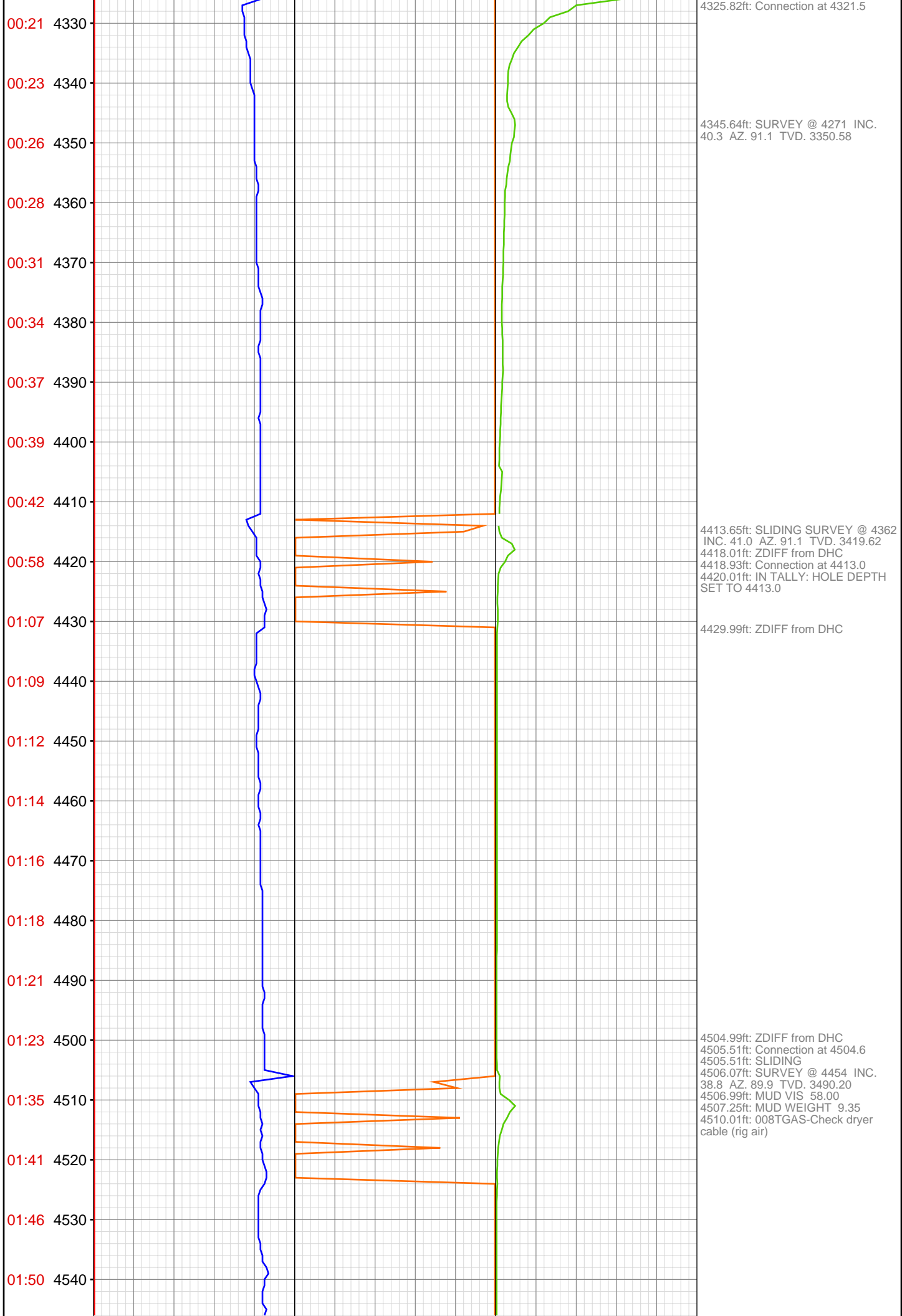


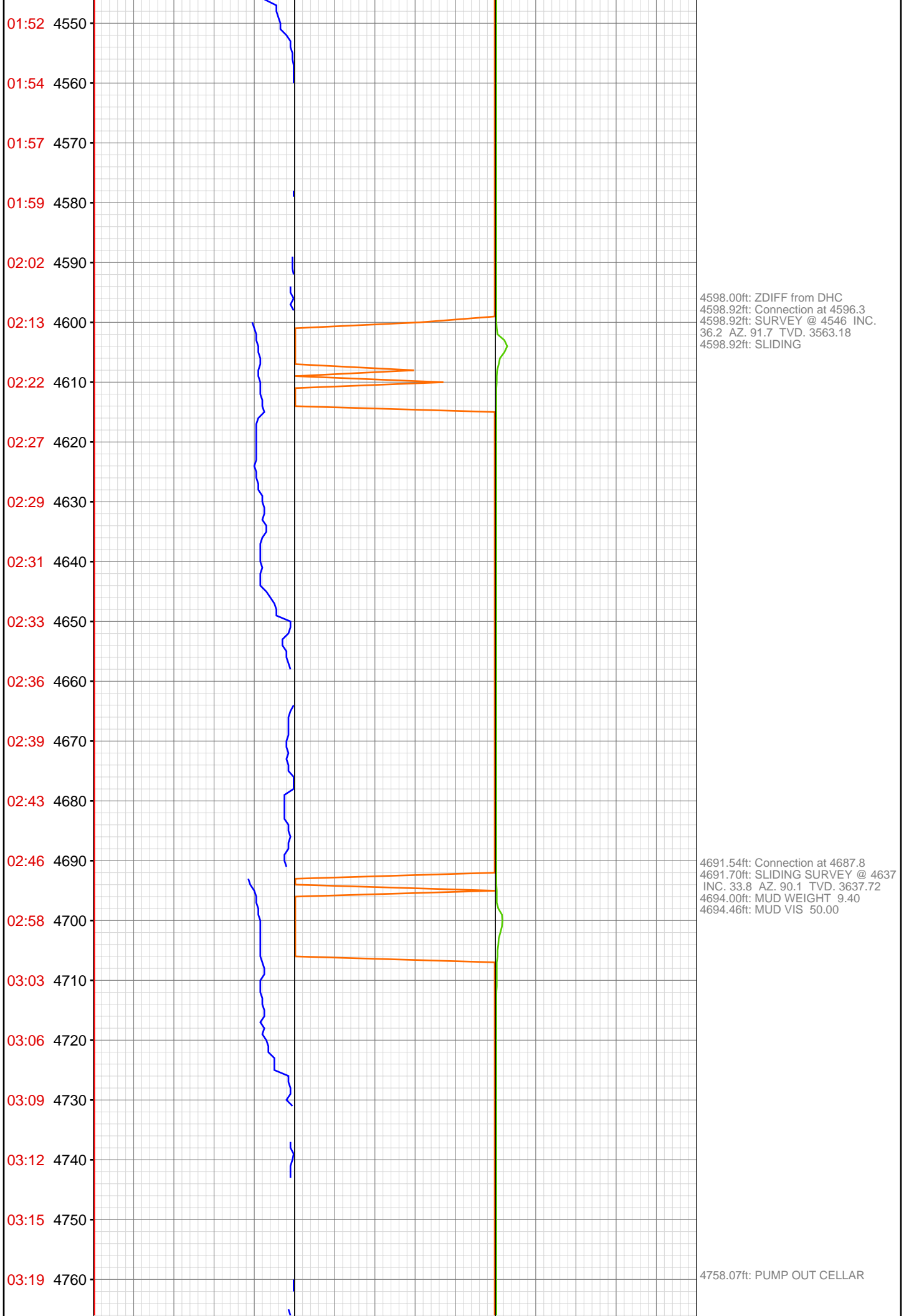


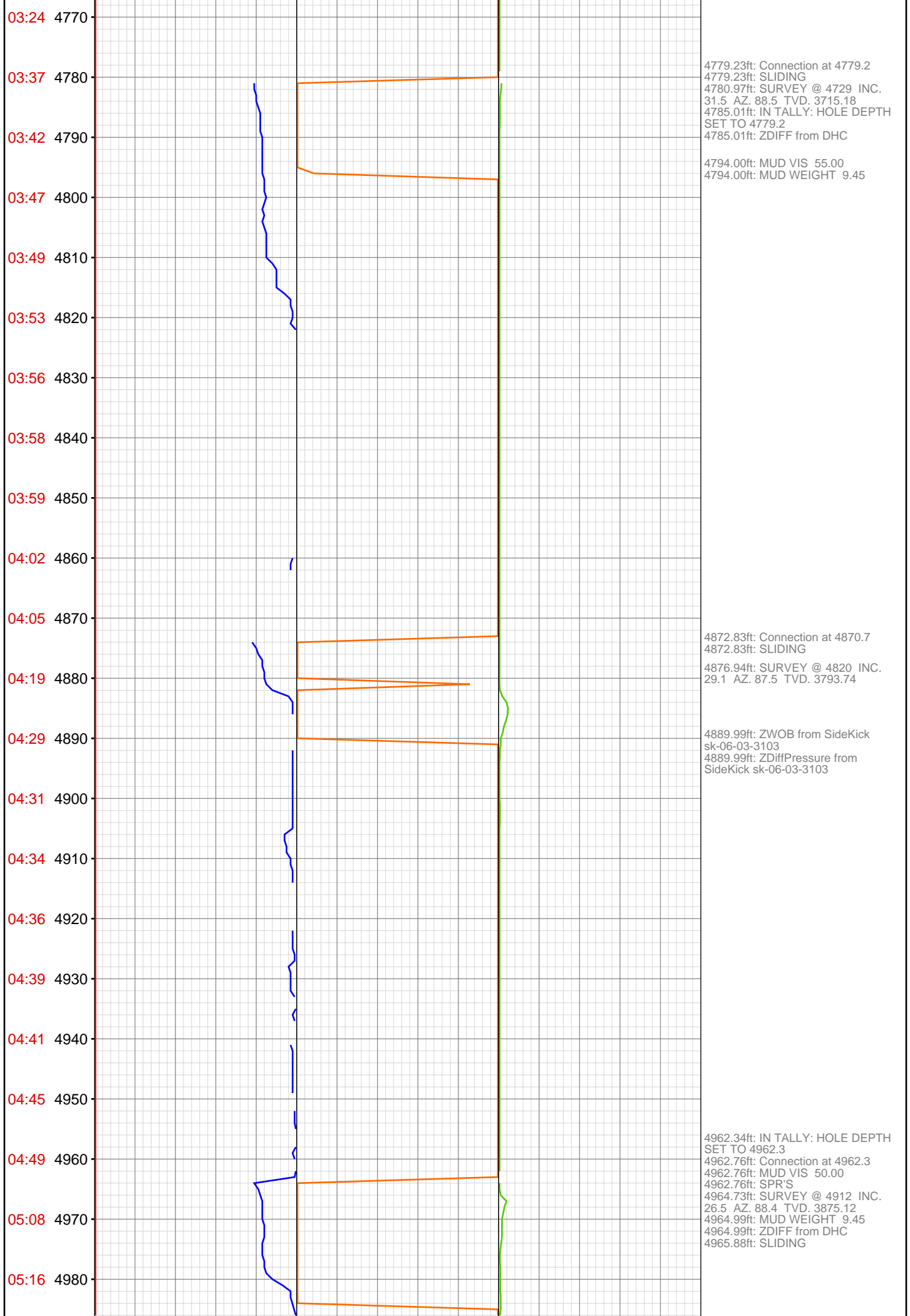


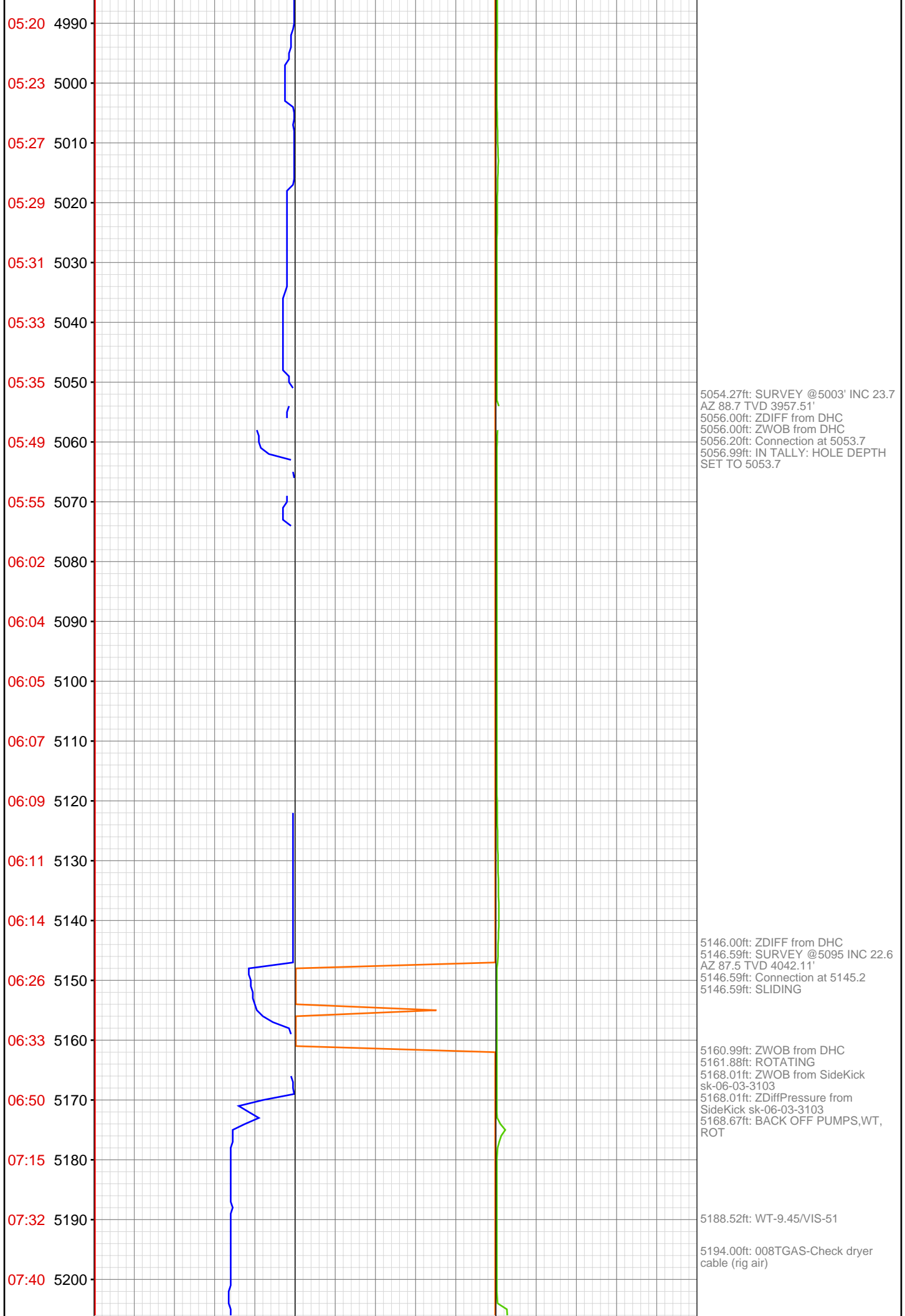


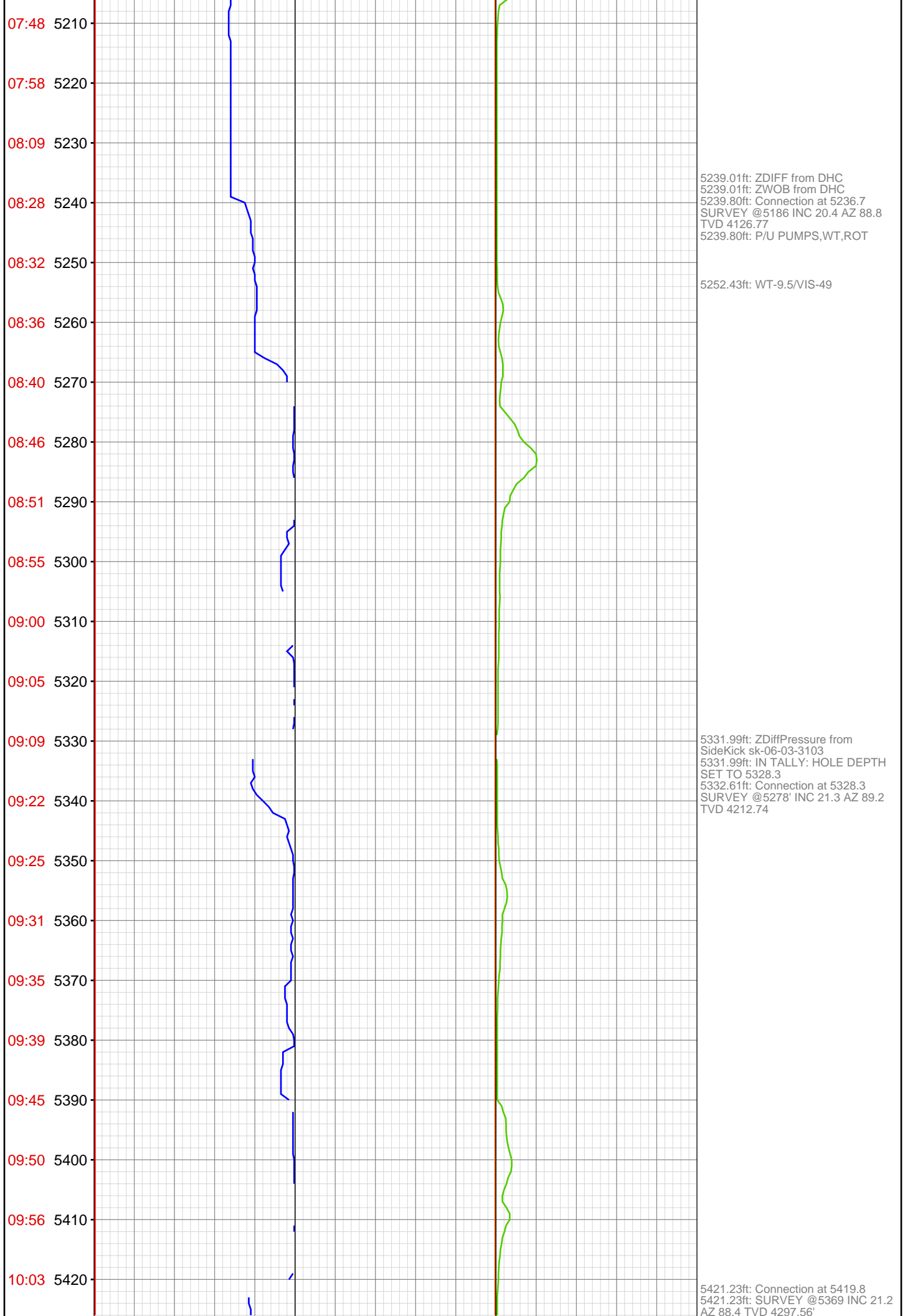


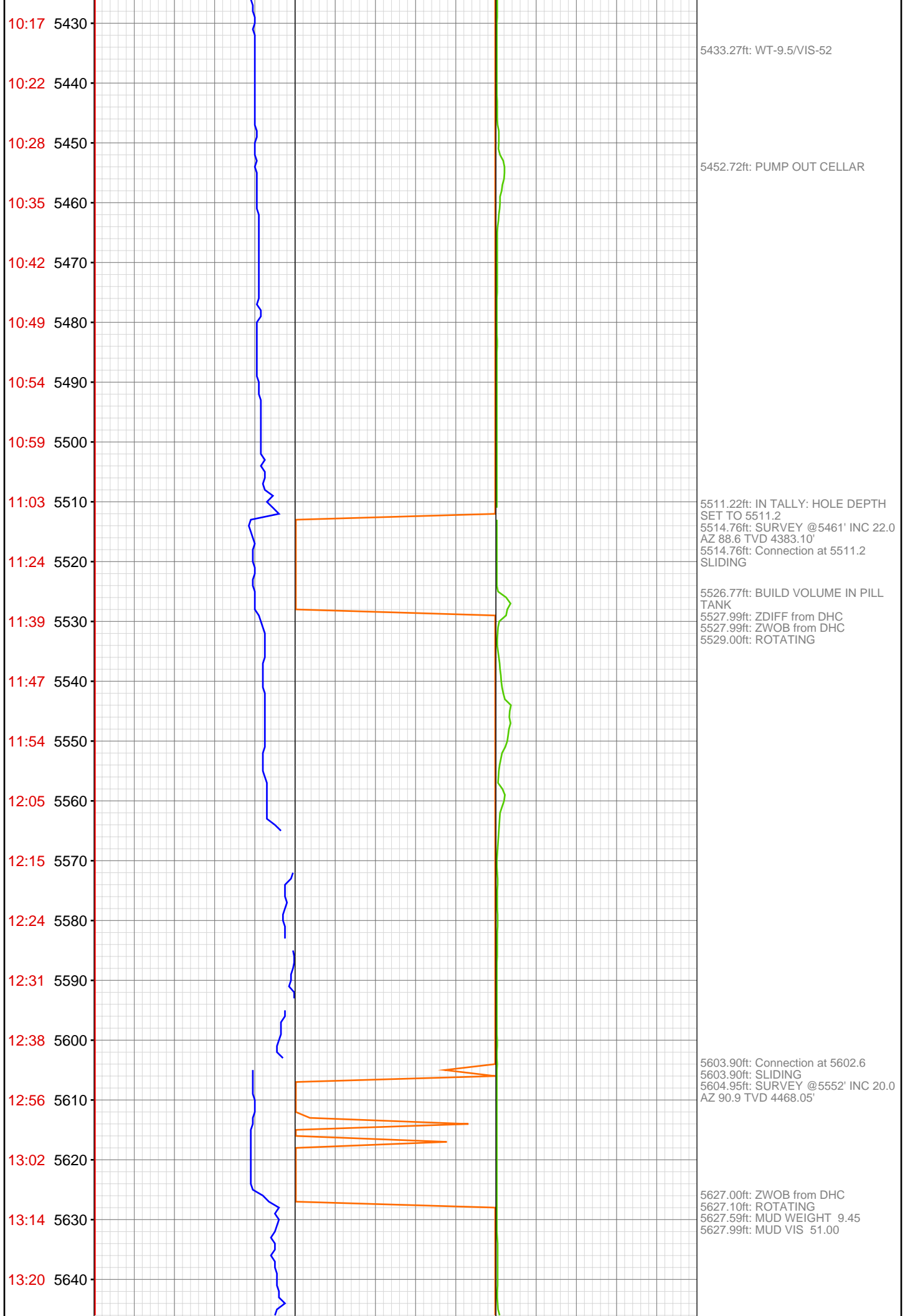


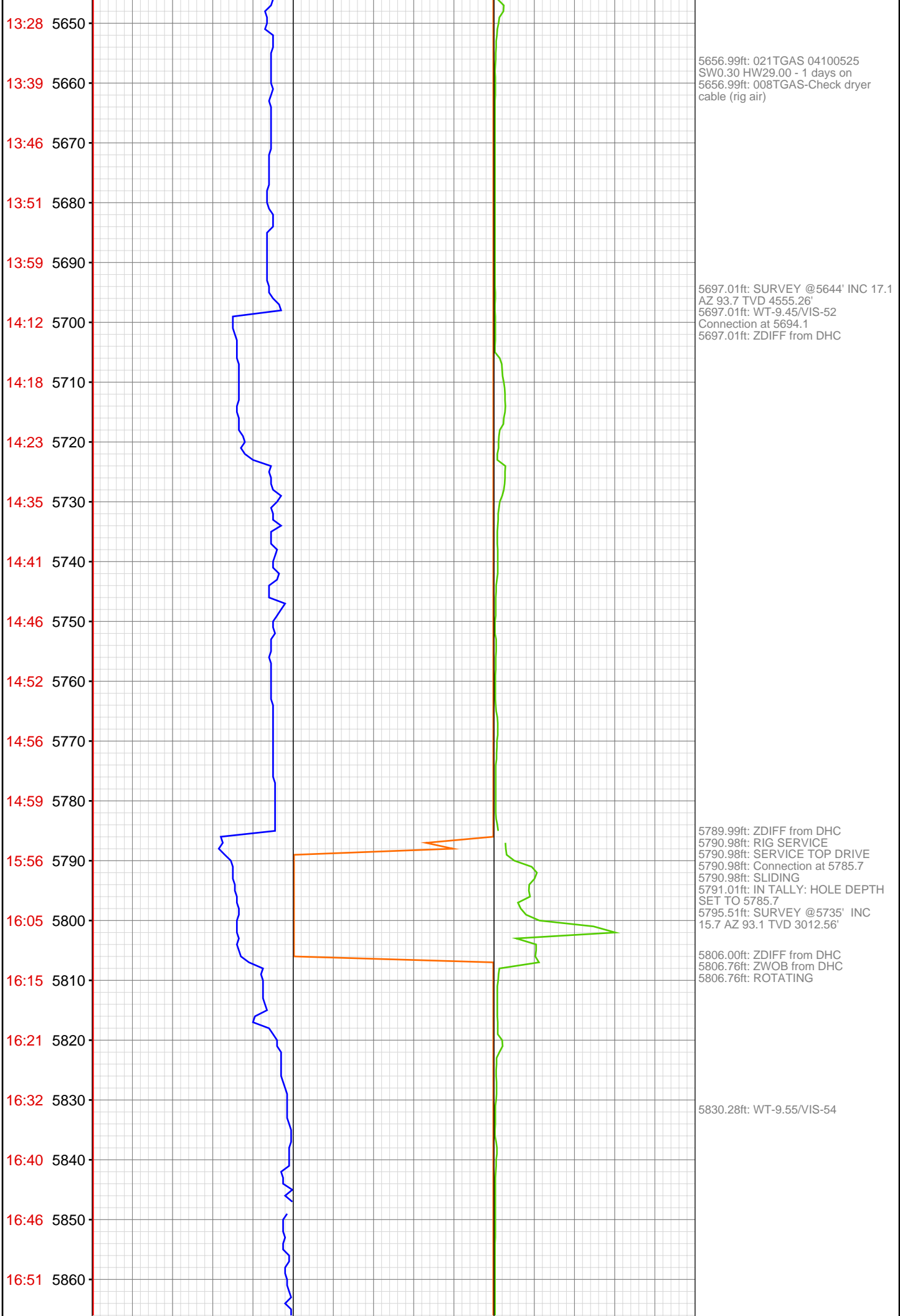


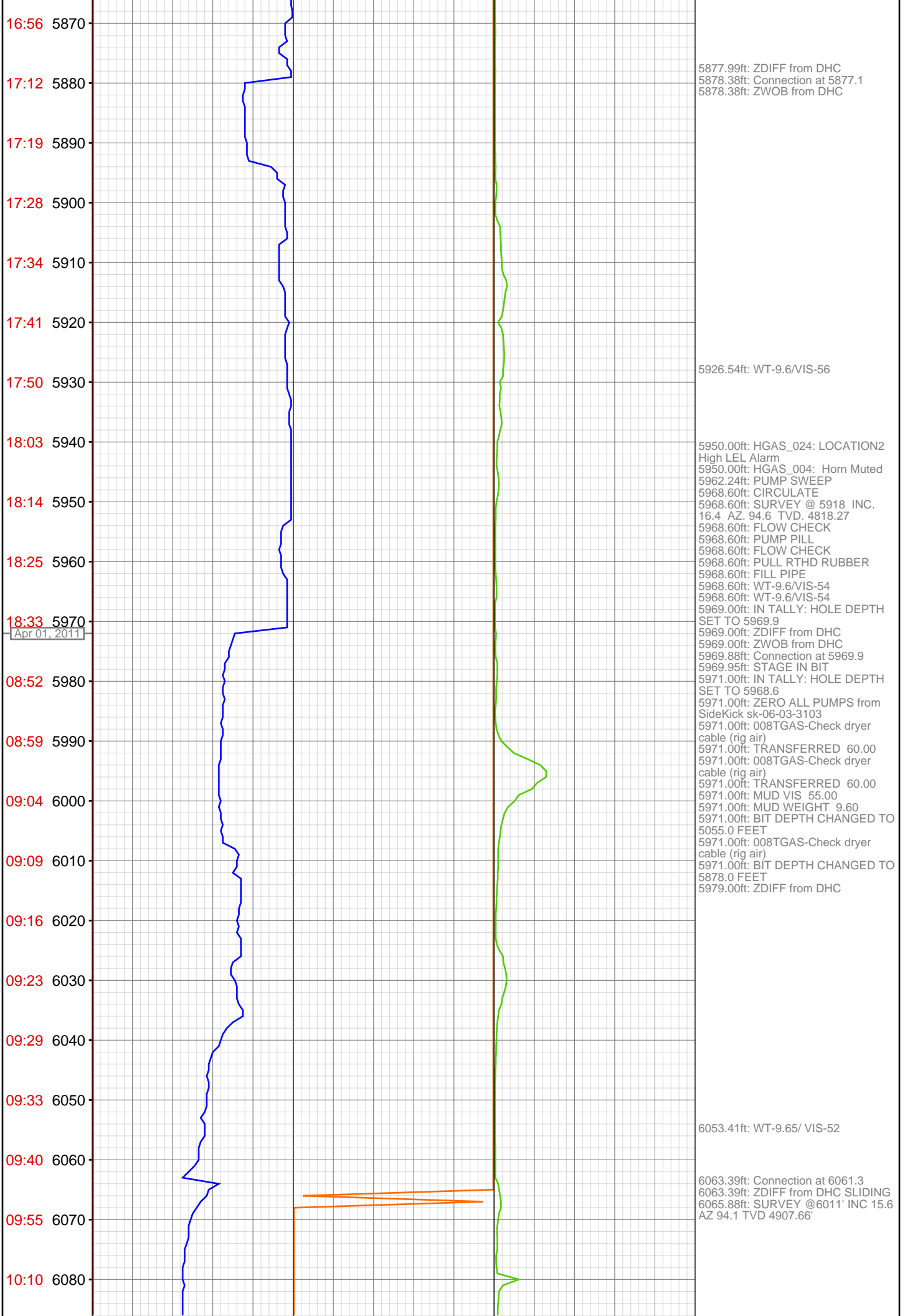


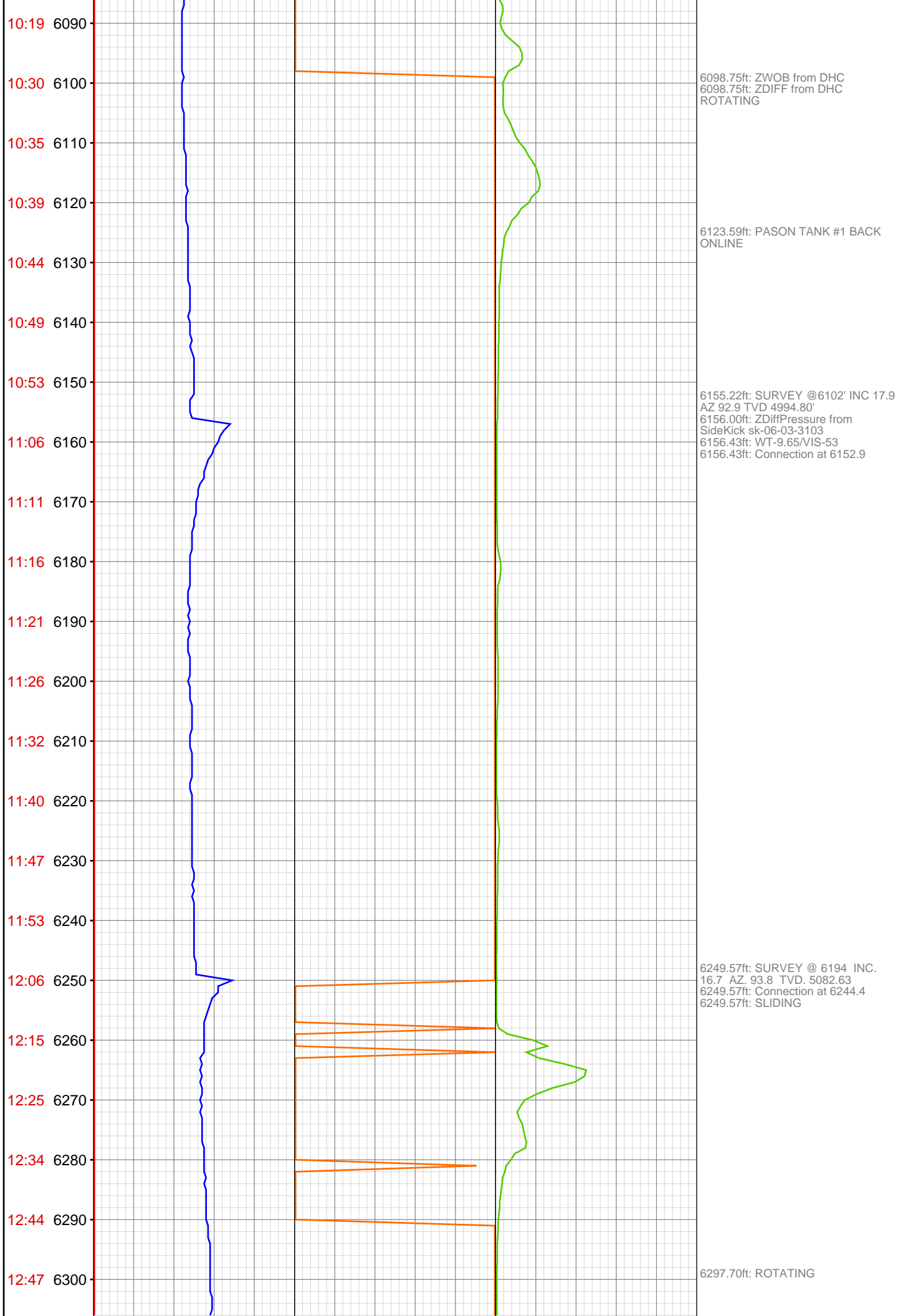




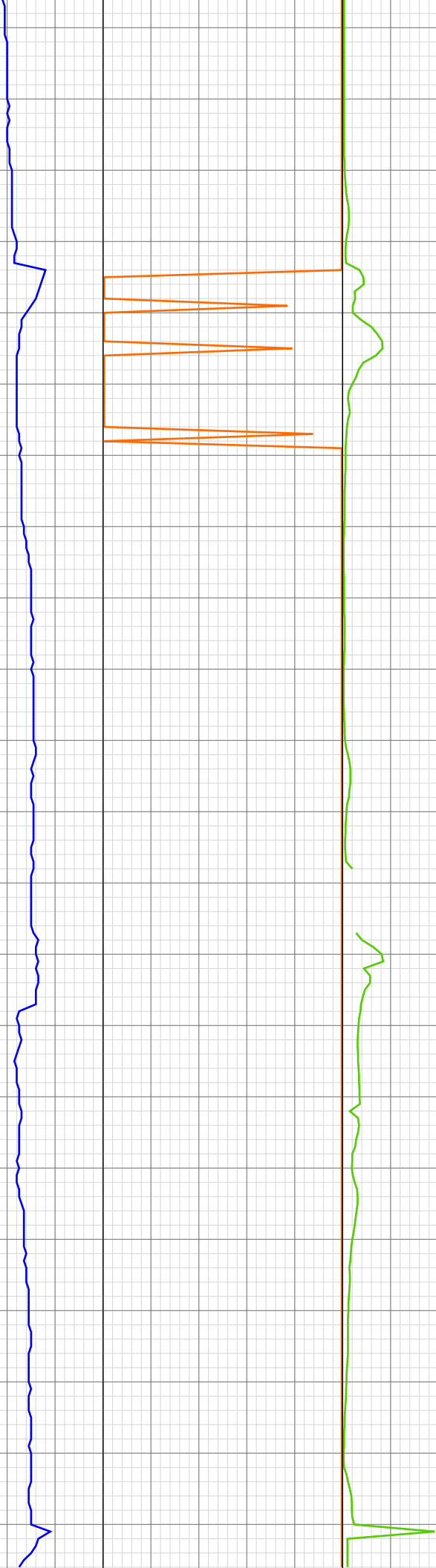








12:52 6310
12:56 6320
13:00 6330
13:05 6340
13:22 6350
13:30 6360
13:43 6370
13:48 6380
13:53 6390
13:57 6400
14:01 6410
14:07 6420
14:14 6430
14:33 6440
14:39 6450
14:45 6460
14:52 6470
14:59 6480
15:04 6490
15:09 6500
15:16 6510
15:22 6520

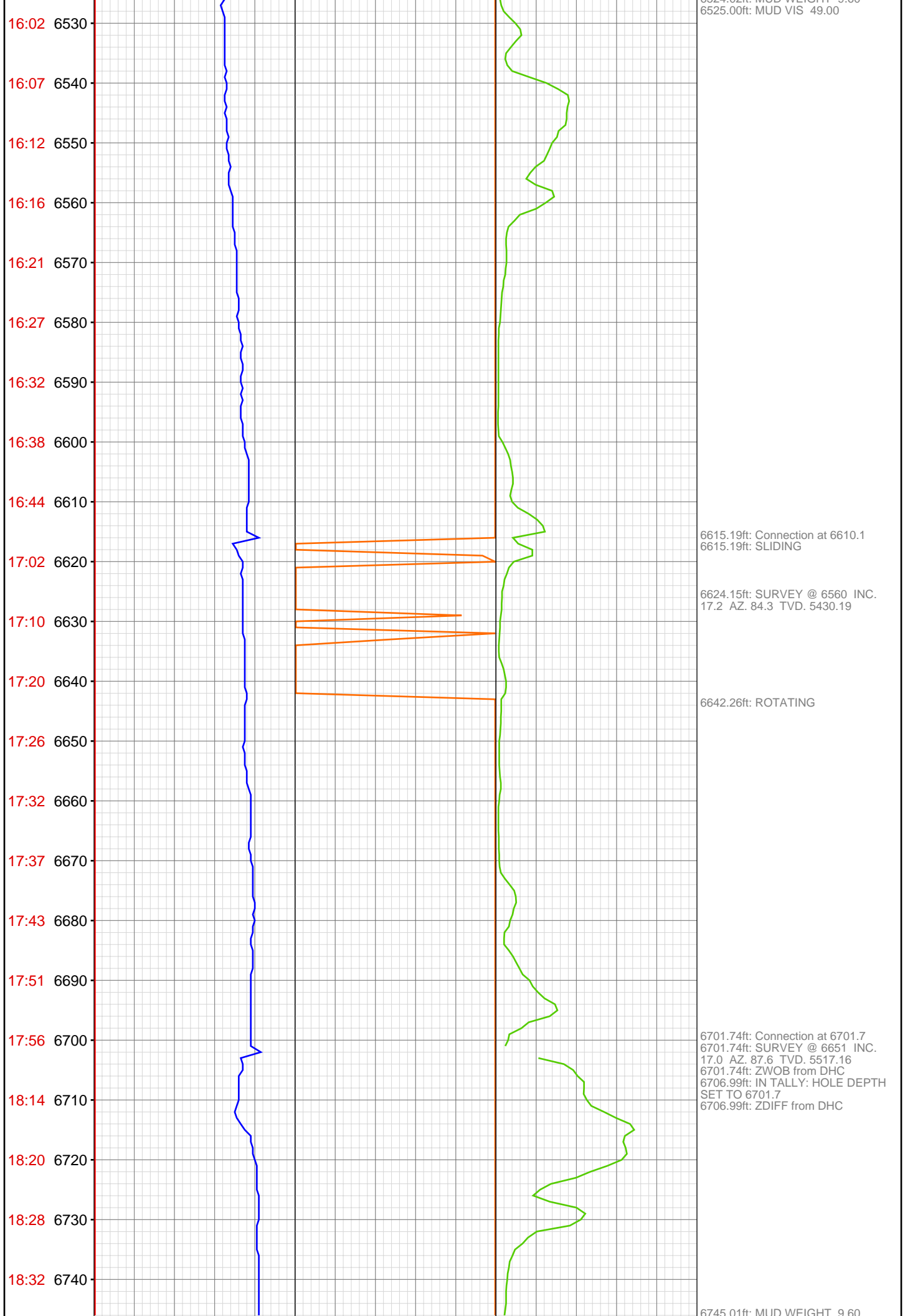


6343.01ft: MUD WEIGHT 9.60
6343.01ft: MUD VIS 0.50
6343.93ft: Connection at 6335.8
6343.93ft: SURVEY @ 6285 INC.
19.1 AZ. 92.0 TVD. 5169.22
6343.93ft: SLIDING

6364.01ft: 021TGAS 04100525
SW0.30 HW29.00 - 2 days on
6364.01ft: 008TGAS-Check dryer
cable (rig air)
6368.01ft: ROTATING
6368.01ft: ZWOB from DHC

6432.45ft: SURVEY @ 6377 INC.
18.9 AZM. 85.9 TVD. 5256.22
6435.99ft: ZWOB from DHC
6435.99ft: IN TALLY: HOLE DEPTH
SET TO 6427.2
6436.75ft: WT-9.6/VIS-50
6436.75ft: Connection at 6427.2
6436.75ft: ZDIFF from DHC

6520.83ft: RIG SERVICE
6520.83ft: SURVEY @ 6468 INC.
18.1 AZ. 85.2 TVD. 5342.52
6520.83ft: Connection at 6518.6
6524.02ft: MUD WEIGHT 9.60



6524.02ft: MUD WEIGHT 9.60

6525.00ft: MUD VIS 49.00

6615.19ft: Connection at 6610.1
6615.19ft: SLIDING

6624.15ft: SURVEY @ 6560 INC.
17.2 AZ. 84.3 TVD. 5430.19

6642.26ft: ROTATING

6701.74ft: Connection at 6701.7
6701.74ft: SURVEY @ 6651 INC.
17.0 AZ. 87.6 TVD. 5517.16
6701.74ft: ZWOB from DHC
6706.99ft: IN TALLY: HOLE DEPTH
SET TO 6701.7
6706.99ft: ZDIFF from DHC

6745.01ft: MUD WEIGHT 9.60

