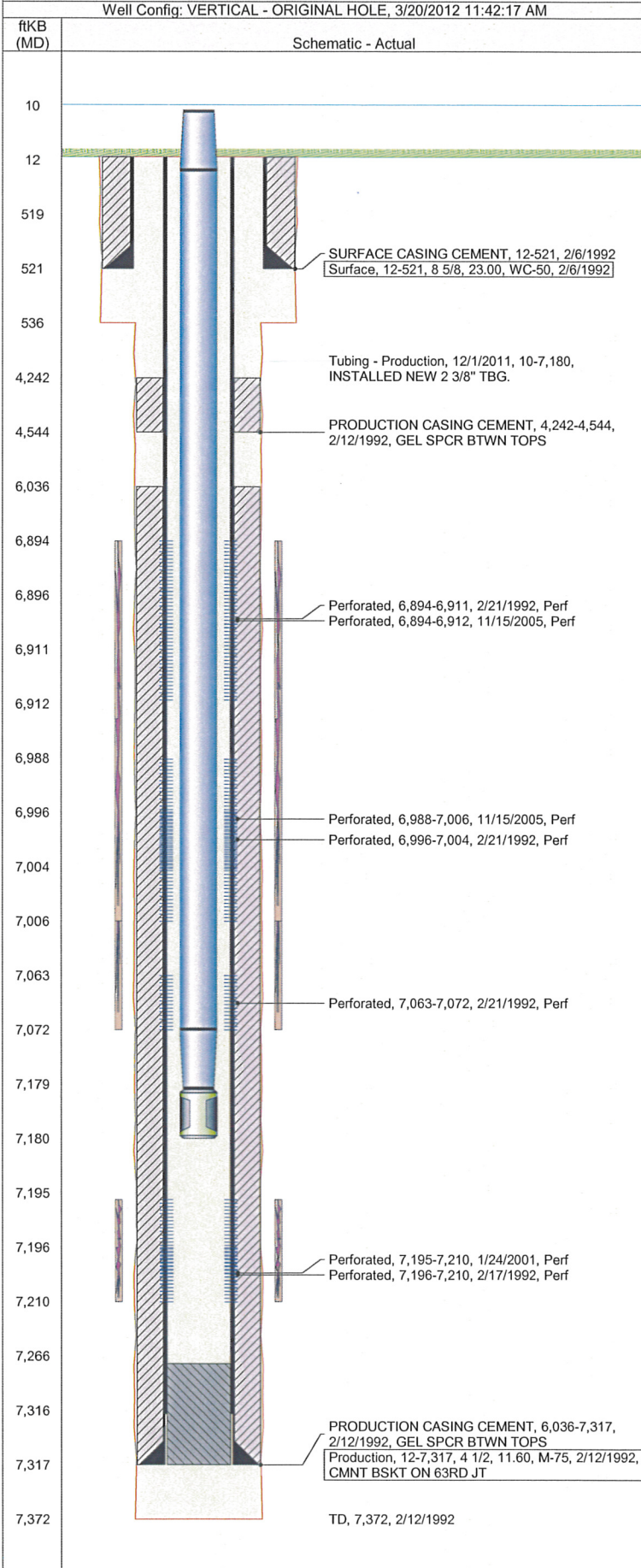


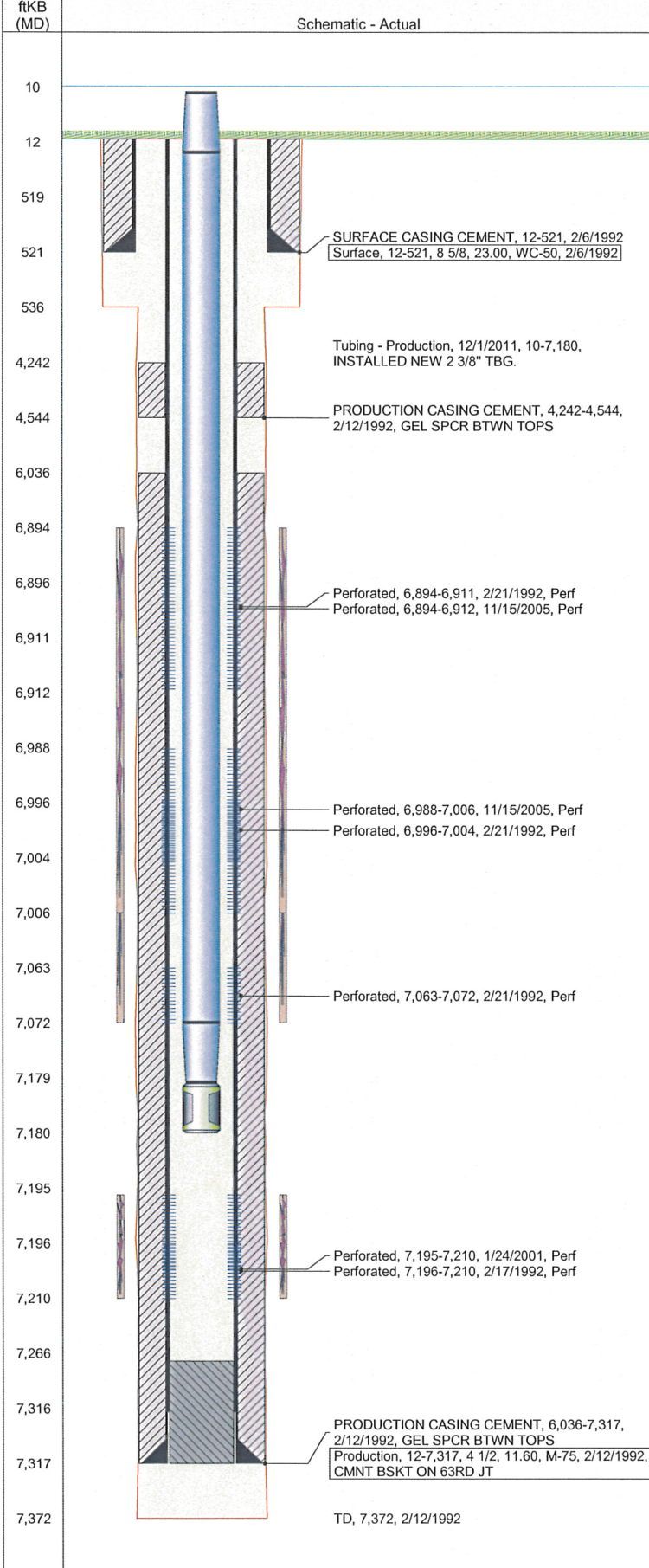
Well Name: MCMILLEN TRUST 19-06G

Well Config: VERTICAL - ORIGINAL HOLE, 3/20/2012 11:42:17 AM



Well Name: MCMILLEN TRUST 19-06G

Well Config: VERTICAL - ORIGINAL HOLE, 3/20/2012 11:42:17 AM



Stimulations & Treatments				
Bnch/...	Date	Zone	Primary Job Type	
	2/22/1992	NIOBRARA, ORIGINAL HOLE	DRILLING/COMPLETION - ORIGINAL	
Comment				
Total Add Amount		V (pumped) (gal)	V (slurry) (gal)	V (gas) (mcf)
Proppant 100 MESH 10000 lb; Proppant 162000 lb			66990	
Avg Treat Pressure (psi)	5,850.0	Max Treat Pressure (psi)	6,000.0	Avg Treat Rate (bbl/min)
				11.00
Bnch/...	Date	Zone	Primary Job Type	
	1/26/2001	CODELL, ORIGINAL HOLE	RE-FRAC	
Comment				
Total Add Amount		V (pumped) (gal)	V (slurry) (gal)	V (gas) (mcf)
Proppant Ottawa 245800 lb			135744	
Avg Treat Pressure (psi)	4,572.0	Max Treat Pressure (psi)	5,770.0	Avg Treat Rate (bbl/min)
				13.80
Bnch/...	Date	Zone	Primary Job Type	
	11/23/2005	NIOBRARA, ORIGINAL HOLE	RE-FRAC	
Comment				
Total Add Amount		V (pumped) (gal)	V (slurry) (gal)	V (gas) (mcf)
Proppant Ottawa 238140 lb; Proppant SB EXCEL 12000 lb			171360	
Avg Treat Pressure (psi)	4,631.0	Max Treat Pressure (psi)	4,813.0	Avg Treat Rate (bbl/min)
				44.80
Bnch/...	Date	Zone	Primary Job Type	
	11/23/2011	CODELL, ORIGINAL HOLE	TRI-FRAC	
Comment				
(CODELL TF) OPEN WELL WITH NO PRESSURE, BACKSIDE WITH 133 PSI, FORMATION BREAK 5061 PSI @ 4.7 BPM. INCREASE 1 AND 2 PSA BY .10 TO CONSERVATE WATER TO MAKE UP FOR WATER USAGE ON BACKSIDE. POST-TREATMENT ISIP= 3461 PSI, 5 MIN= 2831 PSI. AVGS: VISC= 26.67 CP, PH= 10.31, TEMP= 68.88 F, PRESS= 6004 PSI, RATE= 18.78 BPM, MAXIMUM: PRESS= 7083 PSI, RATE= 22.6 BPM. JOB WENT WELL WITH NO ISSUES.				
Total Add Amount		V (pumped) (gal)	V (slurry) (gal)	V (gas) (mcf)
Ottawa 244591.8 lb		124404	135488	
Avg Treat Pressure (psi)	6,004.0	Max Treat Pressure (psi)	7,083.0	Avg Treat Rate (bbl/min)
				18.78
				22.60
Other In Hole				
Run Date	Description		OD (in)	Top (ftKB)
Logs				
Date	Type		Top (ftKB)	Btm (ftKB)
2/12/1992	COMPENSATED DENSITY		3,600.0	7,277.0
2/12/1992	INDUCTION		521.0	7,314.0
2/17/1992	CBL/CCL/GR		521.0	7,314.0