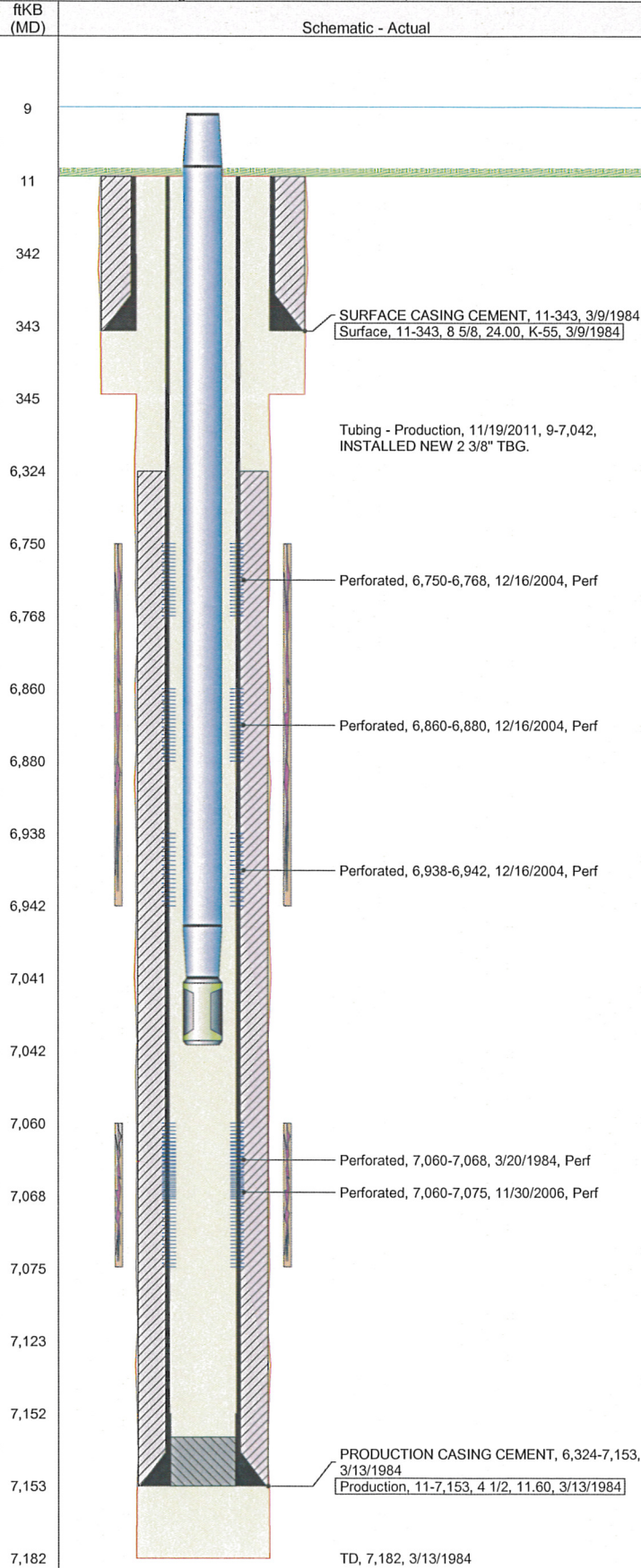


Well Config: VERTICAL - ORIGINAL HOLE, 3/19/2012 3:43:24 PM



Well Header							
API 05-123-11719		Business Unit WATTENBERG		Spud Date 3/8/1984		Well Configuration Type VERTICAL	
Orig KB Elev (ft) 4,699.00	KB - GL / ... 11	Quarter Quarter SWNW	Sec/Abs 10	Twn/Sur... 4N	Range 65W	P & A Date	
Comment PUSH CBP TO 7152							
Directions To Well WCR 43 & WCR 46 1/2: EAST 0.2, NORTH INTO							
Current PBTD (ftKB) ORIGINAL HOLE - 7123.0							
Bottom Hole Location							
North-South Distance (ft)		From N or S Line		East-West Distance (ft)		From E or W Line	
PBTDs							
Date	Depth (ftKB)	Method		Comment			
3/13/1984	7,152.0	TAG		GUIDE SHOE			
12/15/2004	7,130.0	CASED HOLE LOG		DEPTH-LOGGER/CBL			
Wellbore Sections							
Section		Size (in)		Act Top (ftKB)		Act Btm (ftKB)	
SURFACE		12 1/4		11.0		345.0	
PRODUCTION		7 7/8		345.0		7,182.0	
Zone Statuses							
Zone		Status Date		Status		Job	
CODELL		3/30/1984		PR		DRILLING/COMPLETION - ORIGI...	
NIOBRARA		12/21/2004		PR		RECOMPLETION, 12/13/2004 00:00	
CODELL		12/11/2006		PR		RE-FRAC, 11/22/2006 00:00	
CODELL		12/21/2011		PR		TRI-FRAC, 11/11/2011 07:30	
Casing Strings							
Casing Description		Run Date		String OD (in)	String Wt (lbs/ft)	String Grade	Set Depth (ftKB)
Surface		3/9/1984		8 5/8	24.00	K-55	343.0
Production		3/13/1984		4 1/2	11.60		7,153.0
Cement							
Description					Top (ftKB)		Btm (ftKB)
SURFACE CASING CEMENT					11.0		343.0
PRODUCTION CASING CEMENT					6,324.0		7,153.0
Tubing Components							
Item Description		OD (in)	Wt (lbs/ft)	Grade	Jts	Len (ft)	
EUE 8rd Tubing		2 3/8	4.70	J-55	227	7,032.02	
Notch Seat Nipple		2 3/8	4.70	N-80	1	1.20	
Perforation Data							
Zone		Bnch/Stg	Entered Shot Total	Top (ftKB)	Btm (ftKB)	Date	
NIOBRARA, ORIGI...		A	108	6,750.0	6,768.0	12/16/2004	
NIOBRARA, ORIGI...		B	120	6,860.0	6,880.0	12/16/2004	
NIOBRARA, ORIGI...		C	24	6,938.0	6,942.0	12/16/2004	
CODELL, ORIGINA...			27	7,060.0	7,068.0	3/20/1984	
CODELL, ORIGINA...			60	7,060.0	7,075.0	11/30/2006	
Stimulations & Treatments							
Bnch/...	Date	Zone		Primary Job Type			
	3/24/1984	CODELL, ORIGINAL HOLE		DRILLING/COMPLETION - ORIGINAL			
Comment							
Total Add Amount			V (pumped) (gal)	V (slurry) (gal)		V (gas) (mcf)	
Proppant 108200 lb; Proppant 100 MESH 7500 lb				75306			
Avg Treat Pressure (psi)		Max Treat Pressure (psi)		Avg Treat Rate (bbl/min)		Max Treat Rate (bbl/min)	
6,100.0				12.00			
Bnch/...	Date	Zone		Primary Job Type			
	12/20/2004	NIOBRARA, ORIGINAL HOLE		RECOMPLETION			
Comment							
Total Add Amount			V (pumped) (gal)	V (slurry) (gal)		V (gas) (mcf)	
Proppant AcFrac Black 12000 lb; Proppant Ottawa 238040 lb				175812			
Avg Treat Pressure (psi)		Max Treat Pressure (psi)		Avg Treat Rate (bbl/min)		Max Treat Rate (bbl/min)	
4,400.0		4,623.0		47.30		48.40	

Well Name: COLE 12-10

Well Config: VERTICAL - ORIGINAL HOLE, 3/19/2012 3:43:24 PM

Stimulations & Treatments

Bnch/...	Date	Zone	Primary Job Type
	12/4/2006	CODELL, ORIGINAL HOLE	RE-FRAC
Comment			
Total Add Amount		V (pumped) (gal)	V (slurry) (gal)
Proppant Ottawa 247266 lb			128478
Avg Treat Pressure (psi)	Max Treat Pressure (psi)	Avg Treat Rate (bbl/min)	Max Treat Rate (bbl/min)
5,179.0	5,749.0	18.20	18.60
Bnch/...	Date	Zone	Primary Job Type
	11/11/2011	CODELL, ORIGINAL HOLE	TRI-FRAC
Comment			

(CODELL TRIFRAC)PUMPED JOB PER DESIGN. LOST ELECTRONIC READING OF RATE, SWITCHED OVER TO BACK-UP UNIT AND PUMPED REMAINDER OF JOB(10 MINUTES) AT ~12BPM. AVERAGES DO NOT INCLUDE THIS LAST 10 MINUTES OF JOB.

ISIP 2920, 5 MIN 1928. AVERAGES: VISC 26.9, TEMP 72.52, PH 10.23. POST 5MIN 2914.

Total Add Amount		V (pumped) (gal)	V (slurry) (gal)	V (gas) (mcf)
Proppant Ottawa 249800 lb; Ottawa 0		127082	138167	
Avg Treat Pressure (psi)	Max Treat Pressure (psi)	Avg Treat Rate (bbl/min)	Max Treat Rate (bbl/min)	
5,427.0	5,737.0	18.76	18.92	

Other In Hole

Run Date	Description	OD (in)	Top (ftKB)	Btm (ftKB)

Logs

Date	Type	Top (ftKB)	Btm (ftKB)
3/13/1984	COMPENSATED DENSITY	3,500.0	7,178.0
3/13/1984	INDUCTION	343.0	7,178.0
12/15/2004	CBL/CCL/GR	6,233.0	7,127.0

