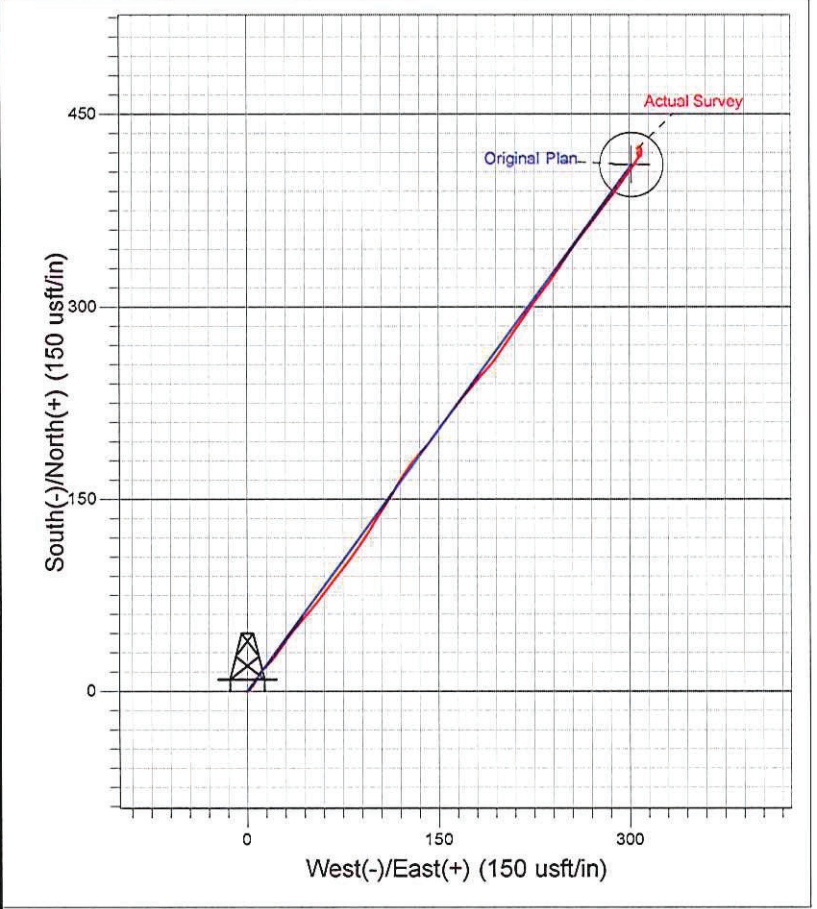
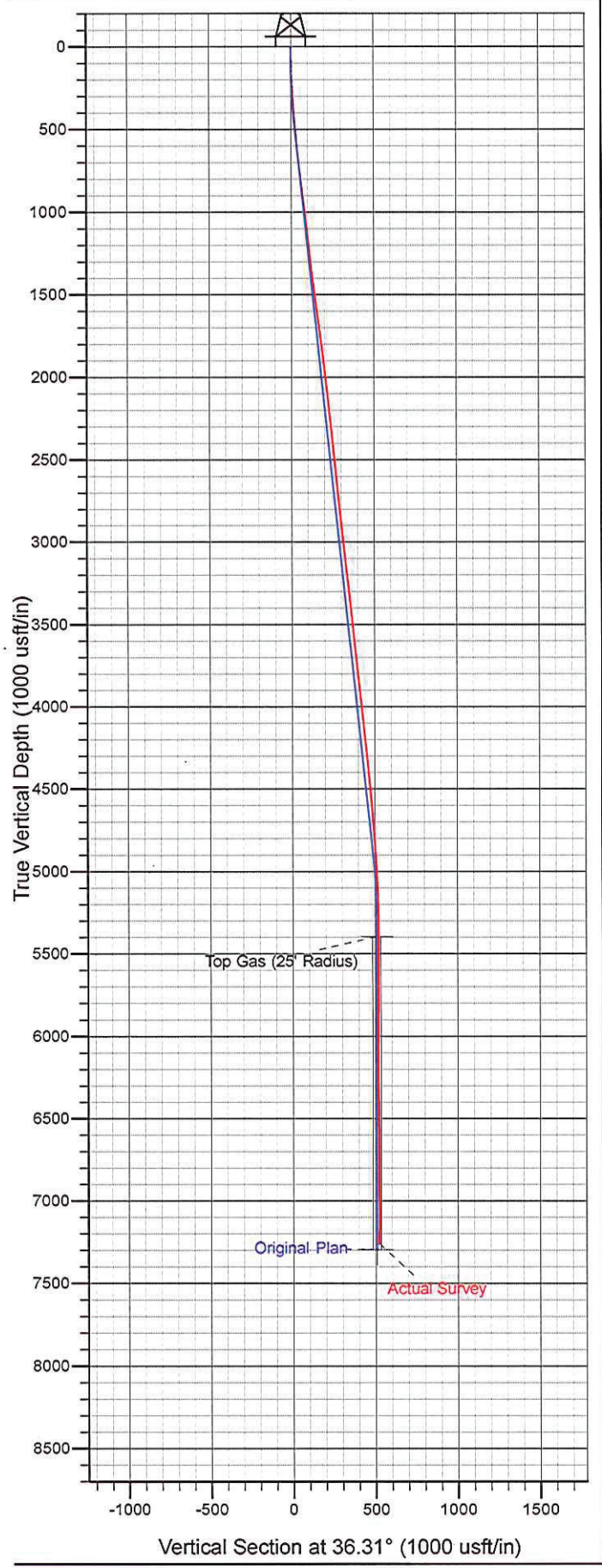




Surface Location: MV 23-27 Pad  
North American Datum 1983 , US State Plane 1983 , Colorado Central Zone  
Ground Elevation: 5770.00  
+N/-S +E/-W Northing Easting Latitude Longitude Slot  
0.00 0.00 1617348.60 2269894.30 39° 29' 59.465 N 108° 5' 15.646 W A1  
KELLY BUSHING @ 5794.00usft (H&P 280 (24' RKB) kjs)



A compass rose diagram with a circle in the center. An arrow points upwards, labeled 'T' for True North. Another arrow points slightly to the right of 'T', labeled 'M' for Magnetic North.

Azimuths to True North  
Magnetic North: 10.41°

Magnetic Field  
Strength: 52257.8snT  
Dip Angle: 65.73°  
Date: 4/18/2011  
Model: IGRF2010