

HALLIBURTON

WILLIAMS PRODUCTION RMT INC - EBUS

**GM 441-27
GRAND VALLEY
Garfield County , Colorado**

Cement Surface Casing **21-Apr-2011**

Post Job Report

The Road to Excellence Starts with Safety

| | | | |
|--|--|-------------------------|------------------------|
| Sold To #: 300721 | Ship To #: 2847799 | Quote #: | Sales Order #: 8096542 |
| Customer: WILLIAMS PRODUCTION RMT INC - EBUS | Customer Rep: Wilson, W.C | | |
| Well Name: GM | Well #: 441-27 | API/UWI #: 05-045-20236 | |
| Field: GRAND VALLEY | City (SAP): PARACHUTE | County/Parish: Garfield | State: Colorado |
| Lat: N 39.5 deg. OR N 39 deg. 29 min. 59.467 secs. | Long: W 108.088 deg. OR W -109 deg. 54 min. 44.352 secs. | | |
| Contractor: H&P 280 | Rig/Platform Name/Num: H&P280 | | |
| Job Purpose: Cement Surface Casing | | | |
| Well Type: Development Well | Job Type: Cement Surface Casing | | |
| Sales Person: KOHL, KYLE | Srvc Supervisor: ANDREWS, ANTHONY | MBU ID Emp #: 321604 | |

Job Personnel

| HES Emp Name | Exp Hrs | Emp # | HES Emp Name | Exp Hrs | Emp # | HES Emp Name | Exp Hrs | Emp # |
|--------------------------|---------|--------|---------------------|---------|--------|--------------------------|---------|--------|
| ANDREWS, ANTHONY Michael | | 321604 | ARNOLD, EDWARD John | | 439784 | BRENNECKE, ANDREW Bailey | | 486345 |
| CUNNINGHAM, TANNER Wade | | 445660 | | | | | | |

Equipment

| HES Unit # | Distance-1 way | HES Unit # | Distance-1 way | HES Unit # | Distance-1 way | HES Unit # | Distance-1 way |
|------------|----------------|------------|----------------|------------|----------------|------------|----------------|
| | | | | | | | |

Job Hours

| Date | On Location Hours | Operating Hours | Date | On Location Hours | Operating Hours | Date | On Location Hours | Operating Hours |
|---------|-------------------|-----------------|------|-------------------|-----------------|------|-------------------|-----------------|
| 4/21/11 | 5.5 | 2 | | | | | | |

TOTAL Total is the sum of each column separately

Job

Job Times

| Formation Name | Top | Bottom | Called Out | Date | Time | Time Zone |
|------------------------|---------|-------------------|---------------|-----------------|-------|-----------|
| Formation Depth (MD) | | | On Location | 21 - Apr - 2011 | 07:30 | MST |
| Form Type | BHST | | Job Started | 21 - Apr - 2011 | 12:00 | MST |
| Job depth MD | 860. ft | Job Depth TVD | Job Completed | 21 - Apr - 2011 | 15:22 | MST |
| Water Depth | | Wk Ht Above Floor | Departed Loc | 21 - Apr - 2011 | 16:02 | MST |
| Perforation Depth (MD) | From | To | | | 17:15 | MST |

Well Data

| Description | New / Used | Max pressure Psig | Size in | ID in | Weight lbm/ft | Thread | Grade | Top MD ft | Bottom MD ft | Top TVD ft | Bottom TVD ft |
|-------------|------------|-------------------|---------|-------|---------------|--------|-------|-----------|--------------|------------|---------------|
|-------------|------------|-------------------|---------|-------|---------------|--------|-------|-----------|--------------|------------|---------------|

Tools and Accessories

| Type | Size | Qty | Make | Depth | Type | Size | Qty | Make | Depth | Type | Size | Qty | Make |
|--------------|------|-----|------|-------|-------------|------|-----|------|-------|----------------|------|-----|------|
| Guide Shoe | | | | | Packer | | | | | Top Plug | | | |
| Float Shoe | | | | | Bridge Plug | | | | | Bottom Plug | | | |
| Float Collar | | | | | Retainer | | | | | SSR plug set | | | |
| Insert Float | | | | | | | | | | Plug Container | | | |
| Stage Tool | | | | | | | | | | Centralizers | | | |

Miscellaneous Materials

| | | | | | | | |
|---------------|------|------------|------|-----------|------|------|---|
| Gelling Agt | Conc | Surfactant | Conc | Acid Type | Qty | Conc | % |
| Treatment Fld | Conc | Inhibitor | Conc | Sand Type | Size | Qty | |

Fluid Data

| Stage/Plug #: 1 | Fluid # | Stage Type | Fluid Name | Qty | Qty uom | Mixing Density lbm/gal | Yield ft ³ /sk | Mix Fluid Gal/sk | Rate bbl/min | Total Mix Fluid Gal/sk |
|-----------------|---------|------------|------------|-----|---------|------------------------|---------------------------|------------------|--------------|------------------------|
|-----------------|---------|------------|------------|-----|---------|------------------------|---------------------------|------------------|--------------|------------------------|

| Stage/Plug #: 1 | | | | | | | | | |
|--|----------------------|-------------------------------|-------------|-----------------------------------|------------------------|---------------------------|------------------|--------------|------------------------|
| Fluid # | Stage Type | Fluid Name | Qty | Qty uom | Mixing Density lbm/gal | Yield ft ³ /sk | Mix Fluid Gal/sk | Rate bbl/min | Total Mix Fluid Gal/sk |
| 1 | Water Spacer | | 20 | bbl | 8.4 | .0 | .0 | .0 | |
| 2 | VersaCem Tail Cement | VERSACEM (TM) SYSTEM (452010) | 230 | sacks | 12.8 | 2.11 | 11.76 | | 11.76 |
| | | 11.76 Gal | FRESH WATER | | | | | | |
| 3 | Displacement Fluid | | 63.1 | bbl | 8.4 | .0 | .0 | .0 | |
| Calculated Values | | Pressures | | Volumes | | | | | |
| Displacement | 63.1 | Shut In: Instant | | Lost Returns | N | Cement Slurry | 86.4 | Pad | |
| Top Of Cement | SURFACE | 5 Min | | Cement Returns | 10 | Actual Displacement | 63.1 | Treatment | |
| Frac Gradient | | 15 Min | | Spacers | 20 | Load and Breakdown | | Total Job | 169.5 |
| Rates | | | | | | | | | |
| Circulating | RIG | Mixing | 8 | Displacement | 10-2 | Avg. Job | 8 | | |
| Cement Left In Pipe | Amount | 44.44 ft | Reason | Shoe Joint | | | | | |
| Frac Ring # 1 @ | ID | Frac ring # 2 @ | ID | Frac Ring # 3 @ | ID | Frac Ring # 4 @ | ID | | |
| The Information Stated Herein Is Correct | | | | Customer Representative Signature | | | | | |

The Road to Excellence Starts with Safety

| | | | | | | | |
|--|--|-----------------------|----------------------------------|--|--|-------------------------|--|
| Sold To #: 300721 | | Ship To #: 2847799 | | Quote #: | | Sales Order #: 8096542 | |
| Customer: WILLIAMS PRODUCTION RMT INC - EBUS | | | | Customer Rep: Wilson, W.C | | | |
| Well Name: GM | | | Well #: 441-27 | | | API/UWI #: 05-045-20236 | |
| Field: GRAND VALLEY | | City (SAP): PARACHUTE | | County/Parish: Garfield | | State: Colorado | |
| Legal Description: | | | | | | | |
| Lat: N 39.5 deg. OR N 39 deg. 29 min. 59.467 secs. | | | | Long: W 108.088 deg. OR W -109 deg. 54 min. 44.352 secs. | | | |
| Contractor: H&P 280 | | | Rig/Platform Name/Num: H&P280 | | | | |
| Job Purpose: Cement Surface Casing | | | | | | Ticket Amount: | |
| Well Type: Development Well | | | Job Type: Cement Surface Casing | | | | |
| Sales Person: KOHL, KYLE | | | Srv Supervisor: ANDREWS, ANTHONY | | | MBU ID Emp #: 321604 | |

| Activity Description | Date/Time | Cht # | Rate bbl/min | Volume bbl | | Pressure psig | | Comments |
|---------------------------------------|------------------|-------|--------------|------------|-------|---------------|--------|---|
| | | | | Stage | Total | Tubing | Casing | |
| Call Out | 04/21/2011 07:30 | | | | | | | |
| Pre-Convoy Safety Meeting | 04/21/2011 09:30 | | | | | | | |
| Crew Leave Yard | 04/21/2011 10:15 | | | | | | | |
| Arrive At Loc | 04/21/2011 11:45 | | | | | | | CREW WAS 45 MINUTES LATE DUE TO SHORT CALL, AND BULK TRUCK NOT BEING LOADED. RIG HADN'T STARTED CASING WHEN WE GOT THERE, NO DELAY CAUSED BY TARDINESS. |
| Assessment Of Location Safety Meeting | 04/21/2011 11:50 | | | | | | | |
| Other | 04/21/2011 11:55 | | | | | | | SPOT EQUIPMENT |
| Pre-Rig Up Safety Meeting | 04/21/2011 12:00 | | | | | | | |
| Rig-Up Equipment | 04/21/2011 12:10 | | | | | | | |
| Pre-Job Safety Meeting | 04/21/2011 15:00 | | | | | | | |
| Start Job | 04/21/2011 15:22 | | | | | | | TD:860 TP: 846.79 SJ: 44.44 MW: 10.1 9 5/8" 32.3#/FT CSG IN 13 1/2" OH |
| Test Lines | 04/21/2011 15:22 | | | | | | | 2500 PSI TEST |
| Pump Spacer | 04/21/2011 15:26 | | 4 | 20 | | | 60.0 | FRESH H2O SPACER |

Sold To #: 300721

Ship To #: 2847799

Quote #:

Sales Order #:

8096542

SUMMIT Version: 7.20.130

Monday, April 25, 2011 04:21:00

| Activity Description | Date/Time | Cht # | Rate bbl/min | Volume bbl | | Pressure psig | | Comments |
|---|------------------|-------|--------------|------------|-------|---------------|--------|---|
| | | | | Stage | Total | Tubing | Casing | |
| Pump Tail Cement | 04/21/2011 15:32 | | 8 | 86.4 | | | 193.0 | 230 SKS @ 12.8 PPG 2.11 YLD 11.75 GAL/SK H2O |
| Shutdown | 04/21/2011 15:42 | | | | | | | |
| Drop Plug | 04/21/2011 15:44 | | | | | | | |
| Pump Displacement | 04/21/2011 15:46 | | 10 | | 61.9 | | 287.0 | FRESH H2O DISPLACEMENT |
| Slow Rate | 04/21/2011 15:54 | | 2 | 51 | | | 190.0 | |
| Bump Plug | 04/21/2011 15:59 | | 2 | 61.9 | | | 650.0 | PLUG BUMPED AT CALCULATED DISPLACEMENT |
| Check Floats | 04/21/2011 16:01 | | | | | | | FLOATS HELD. |
| End Job | 04/21/2011 16:02 | | | | | | | CUSTOMER REQUESTED THAT WE WASH UP PUMPS ON TOP OF PLUG DUE TO LIMITED PIT SPACE. GOOD CIRCULATION THROUGHOUT JOB. PIPE WAS LEFT STATC THROUGHOUT JOB, HELD DOWN BY TOP DRIVE. NO ADD HOURS CHARGED. |
| Post-Job Safety Meeting (Pre Rig-Down) | 04/21/2011 16:10 | | | | | | | LEFT A 9 5/8" CIRCULATING SWAGE ON LOCATION W/ BAIL BASKET. NO SUGAR USED, RIG HAD LEFTOVER SUGAR FROM PREVIOUS JOBS |
| Rig-Down Equipment | 04/21/2011 16:15 | | | | | | | |
| Pre-Convoy Safety Meeting | 04/21/2011 17:10 | | | | | | | |
| Crew Leave Location | 04/21/2011 17:15 | | | | | | | THANK YOU FOR CHOOSING HALLIBURTON CEMENTING OF GRAND JUNCTION, COLORADO ANTHONY ANDREWS AND CREW |

Sold To # : 300721

Ship To # :2847799

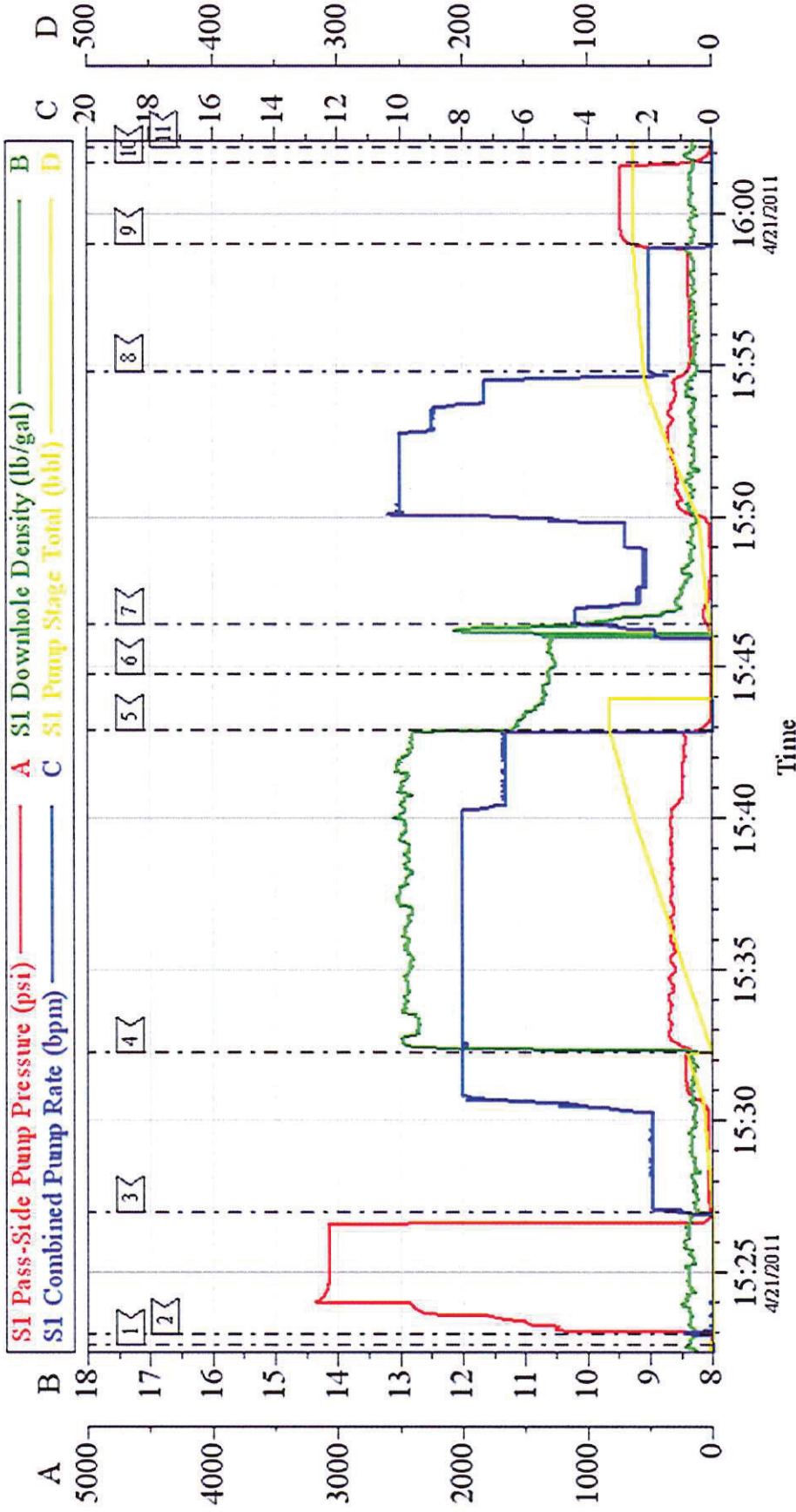
Quote # :

Sales Order # : 8096542

SUMMIT Version: 7.20.130

Monday, April 25, 2011 04:21:00

HP 280 - WILLIAMS 9 5/8" SURFACE



| LocalEvent Log | | | |
|--------------------|----------------|--------------|-----------------|
| Intersection | SPPP | Intersection | SPPP |
| 1 START JOB | 15:22:34 12.00 | 2 TEST LINES | 15:22:56 10.000 |
| 4 PUMP CEMENT | 15:32:14 193.1 | 5 SHUT DOWN | 15:42:54 118.1 |
| 7 H2O DISPLACEMENT | 15:46:26 43.60 | 8 SLOW RATE | 15:54:48 190.4 |
| 10 CHECK FLOATS | 16:01:42 135.1 | 11 END JOB | 16:02:12 4.594 |
| | | 3 H2O SPACER | 15:26:59 17.00 |
| | | 6 DROP PLUG | 15:44:45 4.000 |
| | | 9 BUMP PLUG | 15:59:00 650.7 |

Customer: WILLIAMS
Well #: GM 441-27
Customer Rep: W.C. WILSON

Job Date: 21-Apr-2011
Job Type: SURFACE
Pump Truck: ELITE 2/TANNER CUNNINGHAM

Sales Order #: 8096542
ADC Used: YES
Supervisor: ANTHONY ANDREWS