
OXY GRAND JUNCTION EBUSINESS

**CC 697-04-76B
GRAND VALLEY
Garfield County , Colorado**

Cement Surface Casing
17-Dec-2011

Job Site Documents

The Road to Excellence Starts with Safety

Sold To #: 344034	Ship To #: 2896837	Quote #:	Sales Order #: 8561199
Customer: OXY GRAND JUNCTION EBUSINESS	Customer Rep: Gill, Jeff		
Well Name: CC	Well #: 697-04-76B	API/UWI #: 05-045-20729	
Field: GRAND VALLEY	City (SAP): ADDISON	County/Parish: Garfield	State: Colorado
Lat: N 39.549 deg. OR N 39 deg. 32 min. 55.788 secs.	Long: W 108.23 deg. OR W -109 deg. 46 min. 11.568 secs.		
Contractor: H&P Drilling	Rig/Platform Name/Num: H&P330		
Job Purpose: Cement Surface Casing			
Well Type: Disposal Well	Job Type: Cement Surface Casing		
Sales Person: HIMES, JEFFREY	Srvc Supervisor: ANDREWS, ANTHONY	MBU ID Emp #: 321604	

Job Personnel

HES Emp Name	Exp Hrs	Emp #	HES Emp Name	Exp Hrs	Emp #	HES Emp Name	Exp Hrs	Emp #
ANDREWS, ANTHONY Michael		321604	KUKUS, CHRISTOPHER A		413952	Miller, Reggie		425164
RAMSEY, STANTON Michael		477609						

Equipment

HES Unit #	Distance-1 way	HES Unit #	Distance-1 way	HES Unit #	Distance-1 way	HES Unit #	Distance-1 way

Job Hours

Date	On Location Hours	Operating Hours	Date	On Location Hours	Operating Hours	Date	On Location Hours	Operating Hours

TOTAL	Total is the sum of each column separately							
-------	--	--	--	--	--	--	--	--

Job

Job Times

Formation Name					Date				Time	Time Zone	
Formation Depth (MD)	Top			Bottom			Called Out	16 - Dec - 2011	09:00	MST	
Form Type				BHST				On Location	16 - Dec - 2011	15:30	MST
Job depth MD	2700. ft			Job Depth TVD		2700. ft		Job Started	16 - Dec - 2011	19:26	MST
Water Depth				Wk Ht Above Floor		4. ft		Job Completed	17 - Dec - 2011	16:25	MST
Perforation Depth (MD)	From			To				Departed Loc	17 - Dec - 2011	19:00	MST

Well Data

Description	New / Used	Max pressure psig	Size in	ID in	Weight lbm/ft	Thread	Grade	Top MD ft	Bottom MD ft	Top TVD ft	Bottom TVD ft
-------------	------------	-------------------	---------	-------	---------------	--------	-------	-----------	--------------	------------	---------------

Sales/Rental/3rd Party (HES)

Description	Qty	Qty uom	Depth	Supplier
PLUG,CMTG,TOP,9 5/8,HWE,8.16 MIN/9.06 MA	1	EA		

Tools and Accessories

Type	Size	Qty	Make	Depth	Type	Size	Qty	Make	Depth	Type	Size	Qty	Make
Guide Shoe					Packer					Top Plug			
Float Shoe					Bridge Plug					Bottom Plug			
Float Collar					Retainer					SSR plug set			
Insert Float										Plug Container			
Stage Tool										Centralizers			

Miscellaneous Materials

Gelling Agt	Conc	Surfactant	Conc	Acid Type	Qty	Conc	%
Treatment Fld	Conc	Inhibitor	Conc	Sand Type	Size	Qty	

Fluid Data

Fluid Data									
Stage/Plug #: 1									
Fluid #	Stage Type	Fluid Name	Qty	Qty uom	Mixing Density lbm/gal	Yield ft3/sk	Mix Fluid Gal/sk	Rate bbl/min	Total Mix Fluid Gal/sk

Stage/Plug #: 1									
Fluid #	Stage Type	Fluid Name	Qty	Qty uom	Mixing Density lbm/gal	Yield ft ³ /sk	Mix Fluid Gal/sk	Rate bbl/min	Total Mix Fluid Gal/sk
1	Water Spacer			bbl	8.33	.0	.0	.0	
2	Gel Spacer			bbl	.	.0	.0	.0	
3	Water Spacer			bbl	.	.0	.0	.0	
4	VersaCem Lead Cement	VERSACEM (TM) SYSTEM (452010)		sacks	12.3	2.33	12.62		12.62
12.62 Gal		FRESH WATER							
5	VersaCem Tail Cement	VERSACEM (TM) SYSTEM (452010)		sacks	12.8	2.07	10.67		10.67
10.67 Gal		FRESH WATER							
6	Displacement			bbl	.	.0	.0	.0	
7	Topout Cement	HALCEM (TM) SYSTEM (452986)		sacks	12.5	1.97	10.96		10.96
10.96 Gal		FRESH WATER							
Calculated Values		Pressures		Volumes					
Displacement		Shut In: Instant		Lost Returns		Cement Slurry		Pad	
Top Of Cement		5 Min		Cement Returns		Actual Displacement		Treatment	
Frac Gradient		15 Min		Spacers		Load and Breakdown		Total Job	
Rates									
Circulating		Mixing		Displacement		Avg. Job			
Cement Left In Pipe		Amount	0 ft	Reason	Shoe Joint				
Frac Ring # 1 @	ID	Frac ring # 2 @	ID	Frac Ring # 3 @	ID	Frac Ring # 4 @	ID		
The Information Stated Herein Is Correct				Customer Representative Signature					

The Road to Excellence Starts with Safety

Sold To #: 344034	Ship To #: 2896837	Quote #:	Sales Order #: 8561199
Customer: OXY GRAND JUNCTION EBUSINESS		Customer Rep: Gill, Jeff	
Well Name: CC	Well #: 697-04-76B	API/UWI #: 05-045-20729	
Field: GRAND VALLEY	City (SAP): ADDISON	County/Parish: Garfield	State: Colorado
Legal Description:			
Lat: N 39.549 deg. OR N 39 deg. 32 min. 55.788 secs.		Long: W 108.23 deg. OR W -109 deg. 46 min. 11.568 secs.	
Contractor: H&P Drilling		Rig/Platform Name/Num: H&P330	
Job Purpose: Cement Surface Casing			Ticket Amount:
Well Type: Disposal Well		Job Type: Cement Surface Casing	
Sales Person: HIMES, JEFFREY		Srvc Supervisor: ANDREWS, ANTHONY	MBU ID Emp #: 321604

Activity Description	Date/Time	Cht #	Rate bbl/min	Volume bbl		Pressure psig		Comments
				Stage	Total	Tubing	Casing	
Call Out	12/16/2011 09:00							
Pre-Convoy Safety Meeting	12/16/2011 11:30							
Crew Leave Yard	12/16/2011 11:35							
Arrive At Loc	12/16/2011 15:30							CREW ARRIVED ON LOCATION 1.5 HRS BEFORE REQUESTED TIME, RIG RUNNING CSG
Assessment Of Location Safety Meeting	12/16/2011 15:35							
Other	12/16/2011 15:45							SPOT EQUIPMENT
Pre-Rig Up Safety Meeting	12/16/2011 15:50							
Rig-Up Equipment	12/16/2011 15:55							
Pre-Job Safety Meeting	12/16/2011 19:00							
Start Job	12/16/2011 19:26							TD: 2710 TP: 2660 SJ: 45.53 MW: 8.9 PPG 9.625" 36#/FT J-55 CSG IN 14.75" OH
Test Lines	12/16/2011 19:29							2500 PSI TEST
Pump Spacer	12/16/2011 19:37		3.5	10			30.0	H2O SPACER 1
Pump Spacer	12/16/2011 19:40		3.5	20			52.0	GEL SPACER
Pump Spacer	12/16/2011 19:46		3.5	10			46.0	H2O SPACER 2
Activity Description	Date/Time	Cht	Rate bbl/min	Volume bbl		Pressure psig		Comments

Sold To # : 344034

Ship To # :2896837

Quote # :

Sales Order # :

8561199

SUMMIT Version: 7.2.27

Wednesday, December 21, 2011 03:20:00

		#		Stage	Total	Tubing	Casing	
Pump Lead Cement	12/16/2011 19:50		6.5	444			105.0	1070 SKS @ 12.3 PPG 2.33 YLD 12.62 GAL/SK H2O W/ TUF FIBER
Pump Tail Cement	12/16/2011 21:14		6.5	62.7			138.0	170 SKS @ 12.8 PPG 2.07 YLD 10.67 GAL/SK H2O
Shutdown	12/16/2011 21:26							
Drop Plug	12/16/2011 21:26							PLUG AWAY
Slow Rate	12/16/2011 21:27		2	192			177.0	
Bump Plug	12/16/2011 21:53		2	202.1			680.0	PLUG BUMPED @ CALCULATED DISPLACEMENT
Check Floats	12/16/2011 22:01							FLOATS HELD
Pressure Test	12/16/2011 22:04						1540. 0	PRESSURE TEST CSG TO 1500 PSI FOR 30 MINUTES
Pump Displacement	12/16/2011 22:17		8		202.1		100.0	FRESH H2O DISPLACEMENT
Release Casing Pressure	12/16/2011 22:38							
Other	12/16/2011 22:48		2	10		550.0		PUMP DOWN PARASITE W/ 10BBL SUGAR WATER
Shutdown	12/16/2011 22:54							NO RETURNS THROUGHOUT JOB. PIPE WAS LEFT STATIC. THIS WAS AN OFFLINE SURFACE JOB.
End Job	12/16/2011 22:56							STAGE FOR TOPOUT
Start Job	12/17/2011 00:06							TOPOUT #1
Pump Water	12/17/2011 00:08							BOOST 1.5 BBL WATER TO ENSURE LINES ARE CLEAR, USE 6X5 PUMP ONLY
Pump Cement	12/17/2011 00:09		2.5	49.5		78.0		APPROX 141 SKS CMT USED @ 12.5 PPG 1.97 YLD
Pump Water	12/17/2011 00:31							BOOST 1.5 BBLS H2O BEHIND TO CLEAR 1" TBG OF CMT, USE 6X5 PUMP ONLY
Shutdown	12/17/2011 00:31							

Activity Description	Date/Time	Cht #	Rate bbl/min	Volume bbl		Pressure psig		Comments
				Stage	Total	Tubing	Casing	
End Job	12/17/2011 00:34							CLEAN PUMPS AND LINES, STAGE FOR NEXT TOPOUT. ORDERED ANOTHER LOAD OF TOPOUT FROM GJ YARD @ APPROX 0030 12/17/11. 520 SKS TOPOUT CMT BEING DELIVERED
Start Job	12/17/2011 02:35							TOPOUT #2
Pump Water	12/17/2011 02:36							BOOST 1.5 BBL WATER TO ENSURE LINES ARE CLEAR, USE 6X5 PUMP ONLY
Pump Cement	12/17/2011 02:39		2.5	56.5		80.0		APPROX 161 SKS @ 12.5 PPG 1.97 YLD
Pump Water	12/17/2011 03:02							BOOST 1.5 BBLS H2O BEHIND TO CLEAR 1" TBG OF CMT, USE 6X5 PUMP ONLY
Shutdown	12/17/2011 03:02							
End Job	12/17/2011 03:03							CLEAN PUMPS AND LINES, STAGE FOR NEXT TOPOUT
Start Job	12/17/2011 04:55							TOPOUT # 3
Pump Water	12/17/2011 04:55							BOOST 1.5 BBL WATER TO ENSURE LINES ARE CLEAR, USE 6X5 PUMP ONLY
Pump Cement	12/17/2011 04:56		2.5	56.5		78.0		APPROX 161 SKS @ 12.5 PPG 1.97 YLD
Pump Water	12/17/2011 05:19							BOOST 1.5 BBLS H2O BEHIND TO CLEAR 1" TBG OF CMT, USE 6X5 PUMP ONLY
Shutdown	12/17/2011 05:20							
End Job	12/17/2011 05:20							CLEAN PUMPS AND LINES, WAIT FOR NEXT LOAD OF CEMENT FROM YARD.
Activity Description	Date/Time	Cht #	Rate bbl/min	Volume bbl		Pressure psig		Comments
				Stage	Total	Tubing	Casing	

Start Job	12/17/2011 13:26							TOPOUT #4 520 SKS TOPOUT CMT DELIVERED FROM YARD, ARRIVED @1200 ON 12/17/11
Pump Water	12/17/2011 13:27		1	1.5		15.0		H2O AHEAD TO MAKE SURE LINES ARE CLEAR
Pump Cement	12/17/2011 13:27		2.5	50.5		75.0		APPROX 144 SKS CMT PUMPED @ 12.5 PPG 1.97 YLD
Pump Water	12/17/2011 13:48		1	1.5		50.0		H2O BEHIND TO CLEAR LINES
Shutdown	12/17/2011 13:49							SHUTDOWN WOC FOR TOPOUT #5
End Job	12/17/2011 13:50							
Start Job	12/17/2011 15:51							TOPOUT #5
Pump Water	12/17/2011 15:53		1	1.5		25.0		WATER AHEAD TO MAKE SURE LINES WERE CLEAR
Pump Cement	12/17/2011 15:54		2.5	51		84.0		APPROX 145 SKS CMT PUMPED @ 12.5 PPG 1.97 YLD
Pump Water	12/17/2011 16:23		1	1.5		30.0		WATER BEHIND TO CLEAR LINES
Shutdown	12/17/2011 16:24							GAINED CMT RETURNS, COMPANY REP DECIDED TO SHUTDOWN AND HESITATE TO WATCH FOR FALLBACK, AS SOON AS WE SHUTDOWN CMT FELL BACK. WAITED ABOUT 10 MIN AND PUMPED THE REMAINING 7 BBLs FROM PUMP TRUCK WITH NO RETURNS.
End Job	12/17/2011 16:25							RIG CREW SAID THEY WERE GETTING CEMENT RETURNS OVER THEIR SHAKERS WHILE ON A DIFFERENT WELL, INDICATING THAT THE WELLS WERE COMMUNICATING.
Activity Description	Date/Time	Cht #	Rate bbl/ min	Volume bbl		Pressure psig		Comments
				Stage	Total	Tubing	Casing	

Post-Job Safety Meeting (Pre Rig-Down)	12/17/2011 17:00							AFTER CONSULTING WITH CUSTOMER REP, CUSTOMER DECIDED TO STOP WORK ON THIS WELL UNTIL AFTER NEXT WELL IS DRILLED, CASED, AND CEMENTED.
Rig-Down Equipment	12/17/2011 17:15							TOTAL APPROX SKS OF TOPOUT PUMPED IS 746 SKS, 290 OF WHICH WAS USED FROM THE LOAD OF 520 SKS THAT WAS CALLED FOR DELIVERY ON 12/17/11
Pre-Convoy Safety Meeting	12/17/2011 18:55							
Crew Leave Location	12/17/2011 19:00							THANK YOU FOR CHOOSING HALLIBURTON CEMENTING OF GRAND JUNCTION, COLORADO ANTHONY ANDREWS AND CREW

The Road to Excellence Starts with Safety

Sold To #: 344034	Ship To #: 2896837	Quote #:	Sales Order #: 8561199
Customer: OXY GRAND JUNCTION EBUSINESS		Customer Rep: Gill, Jeff	
Well Name: CC		Well #: 697-04-76B	API/UWI #: 05-045-20729
Field: GRAND VALLEY	City (SAP): ADDISON	County/Parish: Garfield	State: Colorado
Legal Description:			
Lat: N 39.549 deg. OR N 39 deg. 32 min. 55.788 secs.		Long: W 108.23 deg. OR W -109 deg. 46 min. 11.568 secs.	
Contractor: H&P Drilling		Rig/Platform Name/Num: H&P330	
Job Purpose: Cement Surface Casing			Ticket Amount:
Well Type: Disposal Well		Job Type: Cement Surface Casing	
Sales Person: HIMES, JEFFREY		Srvc Supervisor: ANDREWS, ANTHONY	MBU ID Emp #: 321604

Activity Description	Date/Time	Cht #	Rate bbl/min	Volume bbl		Pressure psig		Comments
				Stage	Total	Tubing	Casing	
Call Out	12/16/2011 09:00							
Pre-Convoy Safety Meeting	12/16/2011 11:30							
Crew Leave Yard	12/16/2011 11:35							
Arrive At Loc	12/16/2011 15:30							CREW ARRIVED ON LOCATION 1.5 HRS BEFORE REQUESTED TIME, RIG RUNNING CSG
Assessment Of Location Safety Meeting	12/16/2011 15:35							
Other	12/16/2011 15:45							SPOT EQUIPMENT
Pre-Rig Up Safety Meeting	12/16/2011 15:50							
Rig-Up Equipment	12/16/2011 15:55							
Pre-Job Safety Meeting	12/16/2011 19:00							
Start Job	12/16/2011 19:26							TD: 2710 TP: 2660 SJ: 45.53 MW: 8.9 PPG 9.625" 36#/FT J-55 CSG IN 14.75" OH
Test Lines	12/16/2011 19:29							2500 PSI TEST
Pump Spacer	12/16/2011 19:37		3.5	10			30.0	H2O SPACER 1
Pump Spacer	12/16/2011 19:40		3.5	20			52.0	GEL SPACER
Pump Spacer	12/16/2011 19:46		3.5	10			46.0	H2O SPACER 2
Activity Description	Date/Time	Cht	Rate bbl/min	Volume bbl		Pressure psig		Comments

		#		Stage	Total	Tubing	Casing	
Pump Lead Cement	12/16/2011 19:50		6.5	444			105.0	1070 SKS @ 12.3 PPG 2.33 YLD 12.62 GAL/SK H2O W/ TUF FIBER
Pump Tail Cement	12/16/2011 21:14		6.5	62.7			138.0	170 SKS @ 12.8 PPG 2.07 YLD 10.67 GAL/SK H2O
Shutdown	12/16/2011 21:26							
Drop Plug	12/16/2011 21:26							PLUG AWAY
Slow Rate	12/16/2011 21:27		2	192			177.0	
Bump Plug	12/16/2011 21:53		2	202.1			680.0	PLUG BUMPED @ CALCULATED DISPLACEMENT
Check Floats	12/16/2011 22:01							FLOATS HELD
Pressure Test	12/16/2011 22:04						1540.0	PRESSURE TEST CSG TO 1500 PSI FOR 30 MINUTES
Pump Displacement	12/16/2011 22:17		8		202.1		100.0	FRESH H2O DISPLACEMENT
Release Casing Pressure	12/16/2011 22:38							
Other	12/16/2011 22:48		2	10		550.0		PUMP DOWN PARASITE W/ 10BBL SUGAR WATER
Shutdown	12/16/2011 22:54							NO RETURNS THROUGHOUT JOB. PIPE WAS LEFT STATIC. THIS WAS AN OFFLINE SURFACE JOB.
End Job	12/16/2011 22:56							STAGE FOR TOPOUT
Start Job	12/17/2011 00:06							TOPOUT #1
Pump Water	12/17/2011 00:08							BOOST 1.5 BBL WATER TO ENSURE LINES ARE CLEAR, USE 6X5 PUMP ONLY
Pump Cement	12/17/2011 00:09		2.5	49.5		78.0		APPROX 141 SKS CMT USED @ 12.5 PPG 1.97 YLD
Pump Water	12/17/2011 00:31							BOOST 1.5 BBLS H2O BEHIND TO CLEAR 1" TBG OF CMT, USE 6X5 PUMP ONLY
Shutdown	12/17/2011 00:31							
Activity Description	Date/Time	Cht	Rate bbl/ min	Volume bbl	Pressure psig		Comments	

Sold To # : 344034

Ship To # :2896837

Quote # :

Sales Order # :

8561199

SUMMIT Version: 7.2.27

Wednesday, December 21, 2011 03:20:00

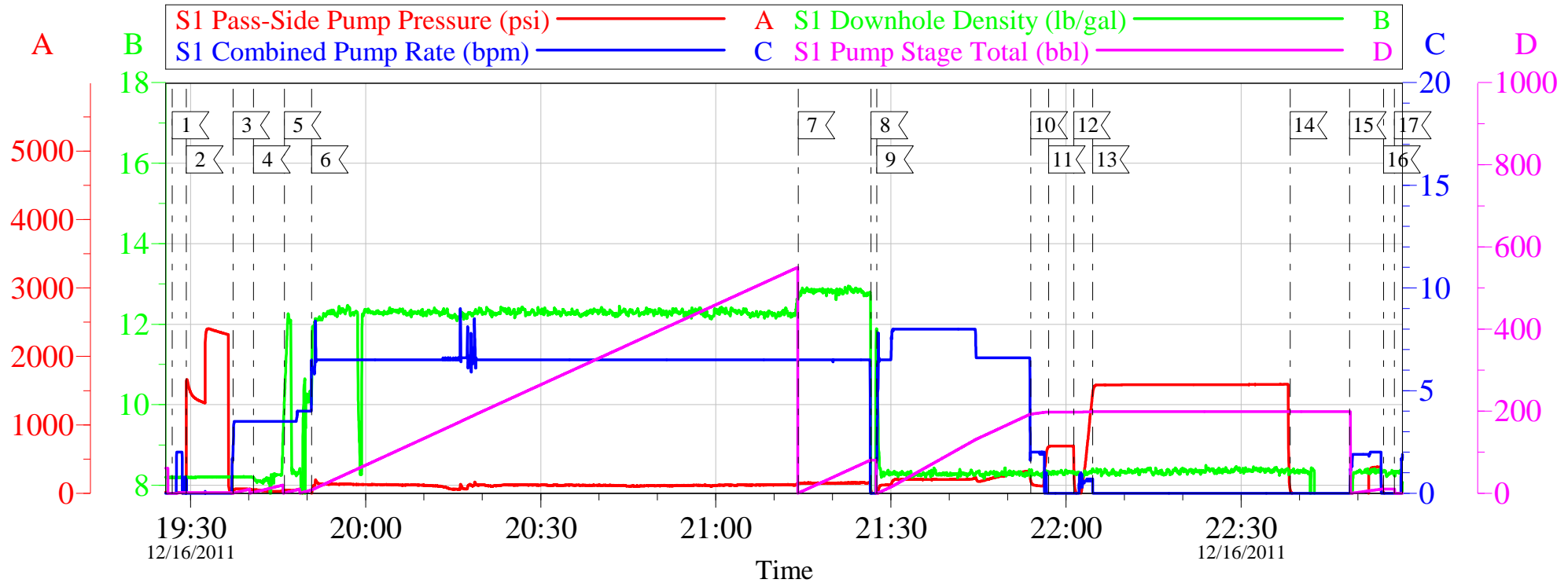
		#		Stage	Total	Tubing	Casing	
End Job	12/17/2011 00:34							CLEAN PUMPS AND LINES, STAGE FOR NEXT TOPOUT. ORDERED ANOTHER LOAD OF TOPOUT FROM GJ YARD @ APPROX 0030 12/17/11. 520 SKS TOPOUT CMT BEING DELIVERED
Start Job	12/17/2011 02:35							TOPOUT #2
Pump Water	12/17/2011 02:36							BOOST 1.5 BBL WATER TO ENSURE LINES ARE CLEAR, USE 6X5 PUMP ONLY
Pump Cement	12/17/2011 02:39		2.5	56.5		80.0		APPROX 161 SKS @ 12.5 PPG 1.97 YLD
Pump Water	12/17/2011 03:02							BOOST 1.5 BBLS H2O BEHIND TO CLEAR 1" TBG OF CMT, USE 6X5 PUMP ONLY
Shutdown	12/17/2011 03:02							
End Job	12/17/2011 03:03							CLEAN PUMPS AND LINES, STAGE FOR NEXT TOPOUT
Start Job	12/17/2011 04:55							TOPOUT # 3
Pump Water	12/17/2011 04:55							BOOST 1.5 BBL WATER TO ENSURE LINES ARE CLEAR, USE 6X5 PUMP ONLY
Pump Cement	12/17/2011 04:56		2.5	56.5		78.0		APPROX 161 SKS @ 12.5 PPG 1.97 YLD
Pump Water	12/17/2011 05:19							BOOST 1.5 BBLS H2O BEHIND TO CLEAR 1" TBG OF CMT, USE 6X5 PUMP ONLY
Shutdown	12/17/2011 05:20							
End Job	12/17/2011 05:20							CLEAN PUMPS AND LINES, WAIT FOR NEXT LOAD OF CEMENT FROM YARD.
Activity Description	Date/Time	Cht #	Rate bbl/min	Volume bbl		Pressure psig		Comments
				Stage	Total	Tubing	Casing	
Start Job	12/17/2011 13:26							TOPOUT #4 520 SKS TOPOUT CMT DELIVERED FROM YARD, ARRIVED @1200 ON 12/17/11

Pump Water	12/17/2011 13:27		1	1.5		15.0		H2O AHEAD TO MAKE SURE LINES ARE CLEAR
Pump Cement	12/17/2011 13:27		2.5	50.5		75.0		APPROX 144 SKS CMT PUMPED @ 12.5 PPG 1.97 YLD
Pump Water	12/17/2011 13:48		1	1.5		50.0		H2O BEHIND TO CLEAR LINES
Shutdown	12/17/2011 13:49							SHUTDOWN WOC FOR TOPOUT #5
End Job	12/17/2011 13:50							
Start Job	12/17/2011 15:51							TOPOUT #5
Pump Water	12/17/2011 15:53		1	1.5		25.0		WATER AHEAD TO MAKE SURE LINES WERE CLEAR
Pump Cement	12/17/2011 15:54		2.5	51		84.0		APPROX 145 SKS CMT PUMPED @ 12.5 PPG 1.97 YLD
Pump Water	12/17/2011 16:23		1	1.5		30.0		WATER BEHIND TO CLEAR LINES
Shutdown	12/17/2011 16:24							GAINED CMT RETURNS, COMPANY REP DECIDED TO SHUTDOWN AND HESITATE TO WATCH FOR FALLBACK, AS SOON AS WE SHUTDOWN CMT FELL BACK. WAITED ABOUT 10 MIN AND PUMPED THE REMAINING 7 BBLs FROM PUMP TRUCK WITH NO RETURNS.
End Job	12/17/2011 16:25							
Post-Job Safety Meeting (Pre Rig-Down)	12/17/2011 17:00							
Rig-Down Equipment	12/17/2011 17:15							TOTAL APPROX SKS OF TOPOUT PUMPED IS 746 SKS, 290 OF WHICH WAS USED FROM THE LOAD OF 520 SKS THAT WAS CALLED FOR DELIVERY ON 12/17/11
Activity Description	Date/Time	Cht #	Rate bbl/min	Volume bbl		Pressure psig		Comments
				Stage	Total	Tubing	Casing	
Pre-Convoy Safety Meeting	12/17/2011 18:55							

Crew Leave Location	12/17/2011 19:00							THANK YOU FOR CHOOSING HALLIBURTON CEMENTING OF GRAND JUNCTION, COLORADO ANTHONY ANDREWS AND CREW
---------------------	---------------------	--	--	--	--	--	--	--

OXY - CC 697-04-76B

SURFACE



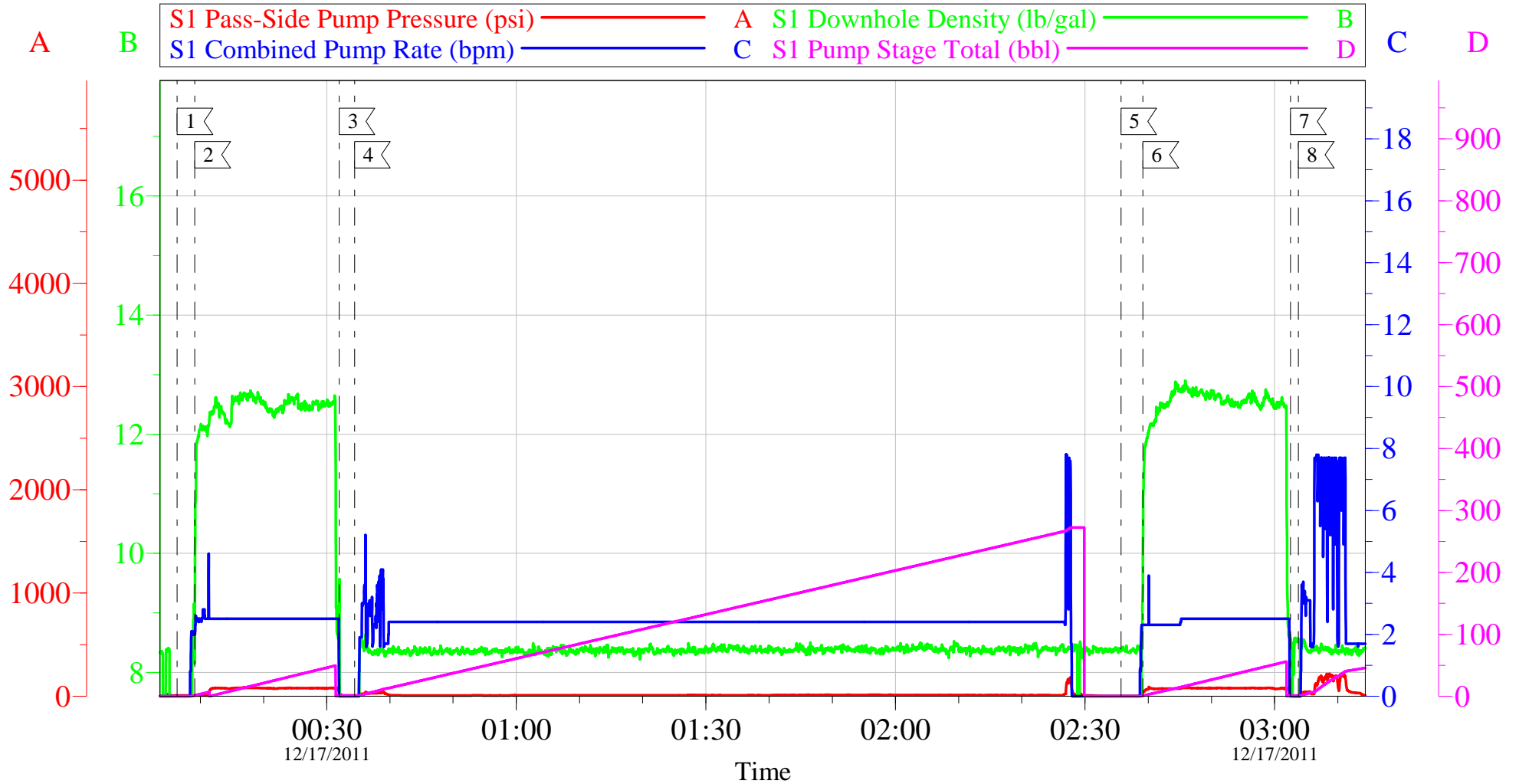
Local Event Log					
Intersection		SPPP	Intersection		SPPP
1	START JOB	19:26:53 -7.000	2	TEST LINES	19:29:18 586.0
3	PUMP H2O SPACER 1	19:37:18 -1.530	4	PUMP GEL SPACER	19:40:49 52.00
5	PUMP H2O SPACER2	19:46:06 46.00	6	PUMP LEAD CEMENT	19:50:45 -11.20
7	PUMP TAIL CEMENT	21:14:07 138.6	8	SHUTDOWN/ DROP PLUG	21:26:37 33.65
9	PUMP DISPLACEMENT	21:27:34 -8.766	10	SLOW RATE	21:53:58 177.0
11	BUMP PLUG	21:57:01 680.1	12	CHECK FLOATS	22:01:20 376.4
13	PRESSURE TEST CASING	22:04:34 1465	14	RELEASE PRESSURE	22:38:25 47.23
15	PUMP PARASITE	22:48:34 -8.000	16	SHUTDOWN	22:54:25 7.670
17	END JOB	22:56:15-10.000			

Customer: OXY	Job Date: 16-Dec-2011	Sales Order #: 8561199
Well Description: CC 697-04-76B	Job Type: SURFACE	ADC Used: YES
Company Rep: JEFF GILL	Cement Supervisor: ANTHONY ANDREWS	Elite #1: CHRIS KUKUS

OptiCem v6.4.10
17-Dec-11 01:07

OXY - CC 697-04-76B

SURFACE TOPOUT 1 & 2



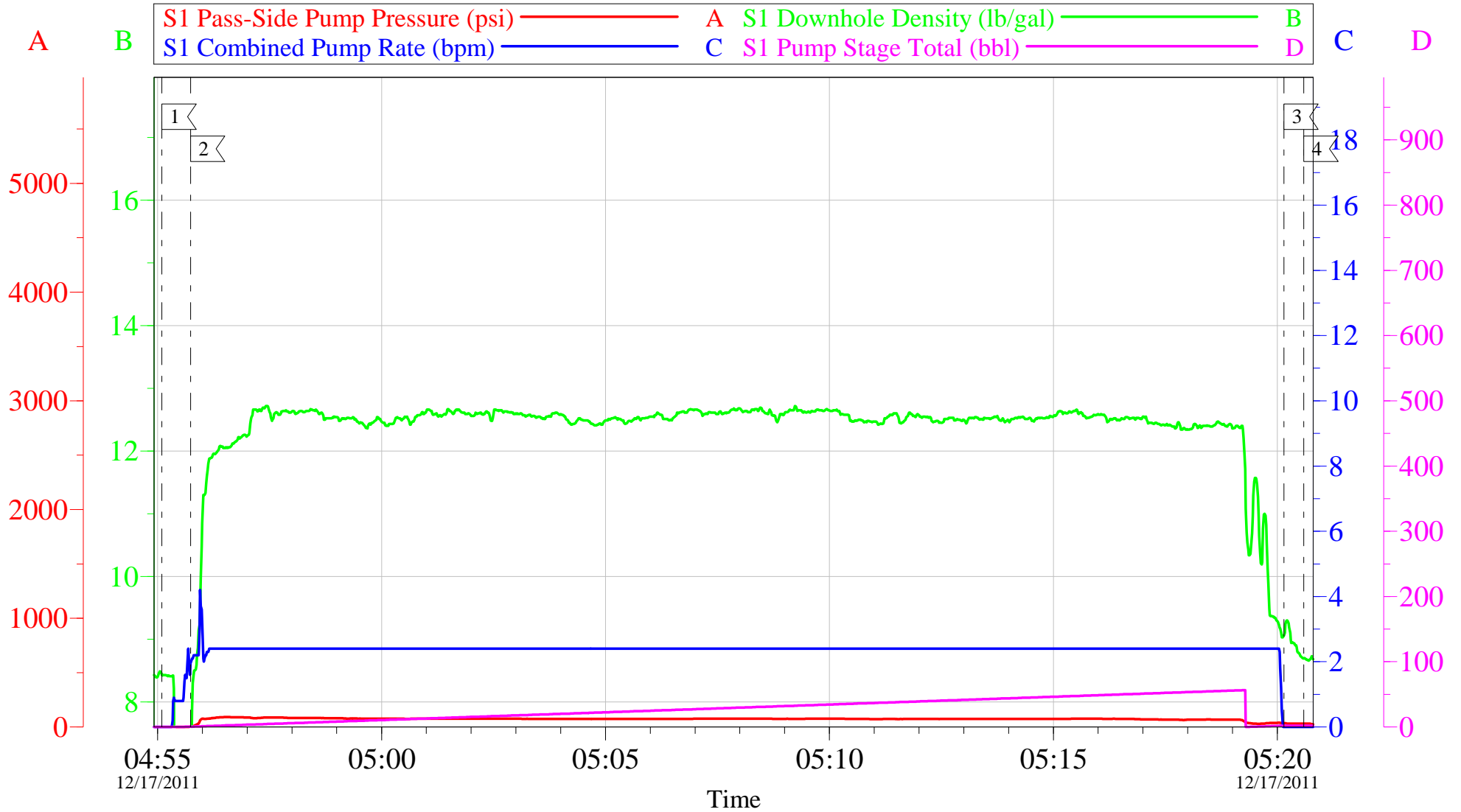
Local Event Log							
Intersection		SPPP	Intersection		SPPP	Intersection	SPPP
1	START JOB	00:06:21 6.000	2	PUMP CEMENT	00:09:08 7.000	3	SHUTDOWN 00:31:58 44.00
4	END JOB	00:34:25 6.000	5	START JOB	02:35:41 3.000	6	PUMP CEMENT 02:39:10 37.12
7	SHUTDOWN	03:02:31 29.16	8	END JOB	03:03:45 0.000		

Customer: OXY	Job Date: 16-Dec-2011	Sales Order #: 8561199
Well Description: CC 697-04-76B	Job Type: SURFACE	ADC Used: YES
Company Rep: JEFF GILL	Cement Supervisor: ANTHONY ANDREWS	Elite #1: CHRIS KUKUS

OptiCem v6.4.10
17-Dec-11 03:20

OXY - CC 697-04-76B

SURFACE TOPOUT #3



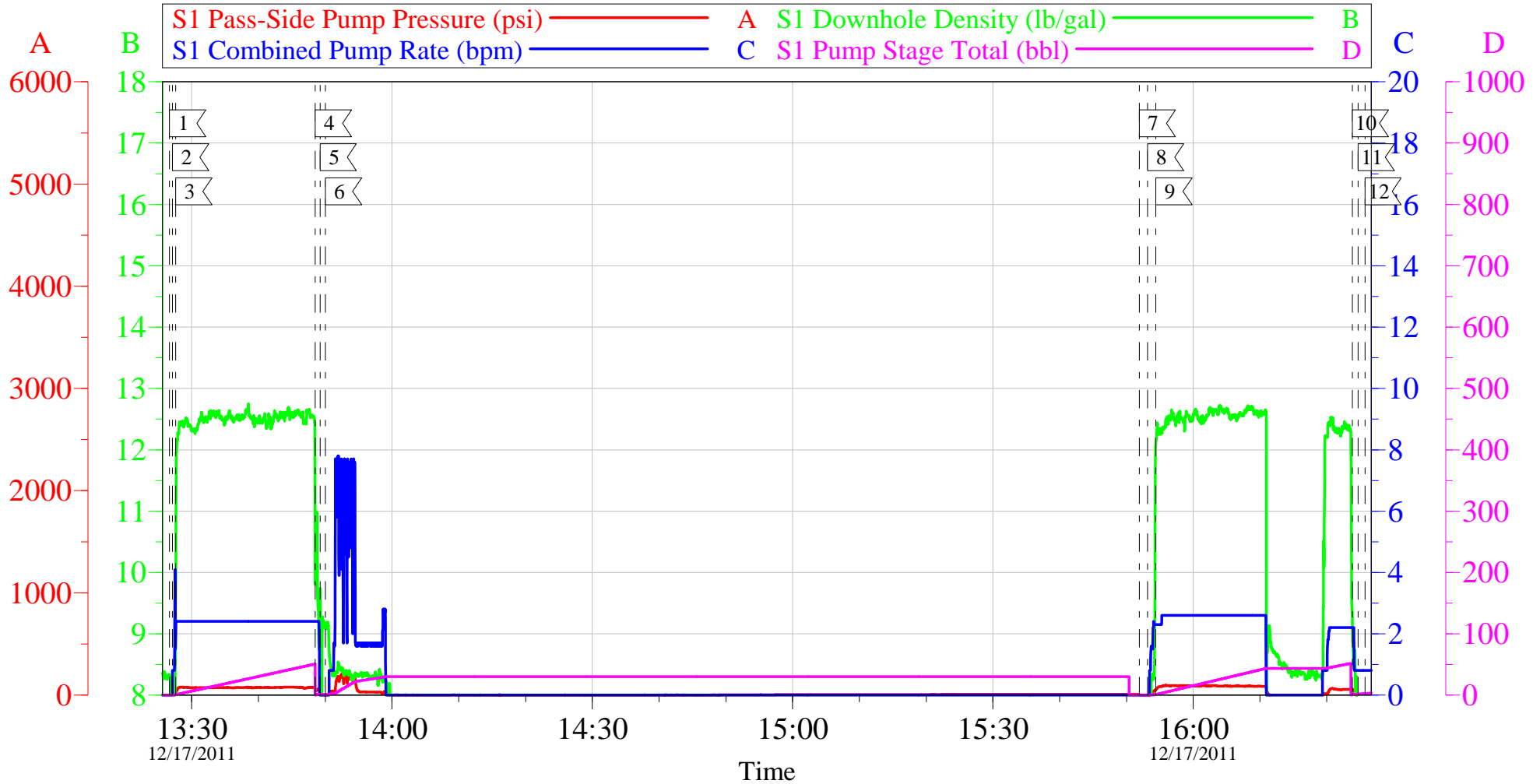
Local Event Log			
1	START JOB	04:55:06	2 PUMP CEMENT 04:55:44
3	SHUTDOWN	05:20:09	4 END JOB/ WOC 05:20:36

Customer: OXY	Job Date: 17-Dec-2011	Sales Order #: 8561199
Well Description: CC 697-04-76B	Job Type: SURFACE TPOUT	ADC Used: YES
Company Rep: JEFF GILL	Cement Supervisor: ANTHONY ANDREWS	Elite #1: CHRIS KUKUS

OptiCem v6.4.10
17-Dec-11 05:28

OXY - CC 697-04-76B

SURFACE TOPOUT #4 & #5



Customer: OXY
Well Description: CC 697-04-76B
Company Rep: VICTOR BENEVIDES

Job Date: 17-Dec-2011
Job Type: SURFACE TOPOUT
Cement Supervisor: ANTHONY ANDREWS

Sales Order #: 8561199
ADC Used: YES
Elite #1: CHRIS KUKUS

OptiCem v6.4.10
17-Dec-11 16:31

HALLIBURTON

Water Analysis Report

Company: OXY
Submitted by: ANTHONY ANDREWS
Attention: R.Chambers/ J.Trout
Lease: CC
Well #: 697-04-76B

Date: 12/16/2011
Date Rec.: 12/16/2011
S.O.#: 8561199
Job Type: SURFACE

Specific Gravity	<i>MAX</i>	<i>1</i>
pH	<i>8</i>	<i>7</i>
Potassium (K)	<i>5000</i>	<i>450</i> Mg / L
Calcium (Ca)	<i>500</i>	<i>0</i> Mg / L
Iron (FE2)	<i>300</i>	<i>0</i> Mg / L
Chlorides (Cl)	<i>3000</i>	<i>0</i> Mg / L
Sulfates (SO ₄)	<i>1500</i>	<i>>200</i> Mg / L
Chlorine (Cl ₂)		<i>0</i> Mg / L
Temp	<i>40-80</i>	<i>70</i> Deg
Total Dissolved Solids		<i>410</i> Mg / L

Respectfully: ANTHONY ANDREWS

Title: CEMENTING SUPERVISOR

Location: Grand Junction, CO

NOTICE:

This report is limited to the described sample tested. Any person using or relying on this report agrees that Halliburton shall not be liable for any loss or damage whether due to act or omission resulting from such report or

Sales Order #: 8561199	Line Item: 10	Survey Conducted Date: 12/17/2011
Customer: OXY GRAND JUNCTION EBUSINESS		Job Type (BOM): CMT SURFACE CASING BOM
Customer Representative: JEFF GILL		API / UWI: (leave blank if unknown) 05-045-20729
Well Name: CC		Well Number: 697-04-76B
Well Type: Disposal Well	Well Country: United States of America	
H2S Present:	Well State: Colorado	Well County: Garfield

Dear Customer,

We hope that you were satisfied with the service quality of this job performed by Halliburton. It is the aim of our management and service personnel to deliver equipment and service of a standard unmatched in the service sector of the energy industry.

Please take the time to let us know if our performance met with your satisfaction. Please be as critical as possible to ensure we constantly improve our service. Your comments are of great value to us and are intended for the exclusive use of Halliburton.

CUSTOMER SATISFACTION SURVEY

CATEGORY	CUSTOMER SATISFACTION RESPONSE	
Survey Conducted Date	The date the survey was conducted	12/18/2011
Survey Interviewer	The survey interviewer is the person who initiated the survey.	ANTHONY ANDREWS (HAM3833)
Customer Participation	Did the customer participate in this survey? (Y/N)	Yes
Customer Representative	Enter the Customer representative name	JEFF GILL
HSE	Was our HSE performance satisfactory? Circle Y or N	Yes
Equipment	Were you satisfied with our Equipment? Circle Y or N	Yes
Personnel	Were you satisfied with our people? Circle Y or N	Yes
Customer Comment	Customer's Comment	

CUSTOMER SIGNATURE

Sales Order #: 8561199	Line Item: 10	Survey Conducted Date: 12/17/2011
Customer: OXY GRAND JUNCTION EBUSINESS		Job Type (BOM): CMT SURFACE CASING BOM
Customer Representative: JEFF GILL		API / UWI: (leave blank if unknown) 05-045-20729
Well Name: CC		Well Number: 697-04-76B
Well Type: Disposal Well	Well Country: United States of America	
H2S Present:	Well State: Colorado	Well County: Garfield

KEY PERFORMANCE INDICATORS

General	
Survey Conducted Date	12/17/2011
The date the survey was conducted	

Cementing KPI Survey	
Type of Job	0
Select the type of job. (Cementing or Non-Cementing)	
Select the Maximum Deviation range for this Job	Deviated
What is the highest deviation for the job you just completed? This may not be the maximum well deviation.	
Total Operating Time (hours)	8
Total Operating Hours Including Rig-up, Pumping, Rig-down. Enter in decimal format.	
HSE Incident, Accident, Injury	No
HSE Incident, Accident, Injury. This should be recordable incidents only.	
Was the job purpose achieved?	Yes
Was the job delivered correctly as per customer agreed design?	
Operating Hours (Pumping Hours)	6
Total number of hours pumping fluid on this job. Enter in decimal format.	
Customer Non-Productive Rig Time (hrs)	0
Lost time due to Halliburton in the start, execution, or completion of an ordered service or product, or delays in a follow-on service. Enter in decimal format. 0 if none.	
Type of Rig Classification Job Was Performed	Drilling Rig (Portable)
Type Of Rig (classification) Job Was Performed On	
Number Of JSAs Performed	7
Number Of Jsas Performed	
Number of Unplanned Shutdowns	0
Unplanned shutdown is when injection stops for any period of time.	
Was this a Primary Cement Job (Yes / No)	Yes

Sales Order #: 8561199	Line Item: 10	Survey Conducted Date: 12/17/2011
Customer: OXY GRAND JUNCTION EBUSINESS		Job Type (BOM): CMT SURFACE CASING BOM
Customer Representative: JEFF GILL		API / UWI: (leave blank if unknown) 05-045-20729
Well Name: CC		Well Number: 697-04-76B
Well Type: Disposal Well	Well Country: United States of America	
H2S Present:	Well State: Colorado	Well County: Garfield

Primary Cement Job= Casing job, Liner job, or Tie-back job.	
Did We Run Wiper Plugs? Did We Run Top And Bottom Casing Wiper Plugs?	Top
Mixing Density of Job Stayed in Designed Density Range (0-100%) Density Range defined as +/- .20 ppg. Calculation: Total BBLs cement mixed at designed density divided by total BBLs of cement multiplied by 100	90
Was Automated Density Control Used? Was Automated Density Control (ADC) Used ?	Yes
Pump Rate (percent) of Job Stayed At Designed Pump Rate Pump Rate range defined as +/- 1bbl/min. Calculation: Total BBLs of fluid pumped at the designed rate divided by Total BBLs of fluid pumped, multiplied by 100	90
Nbr of Remedial Sqz Jobs Rqd - Competition Number Of Remedial Squeeze Jobs Required After Primary Job Performed By Competition	0
Nbr of Remedial Plug Jobs Rqd - HES Number Of Remedial Plug Jobs Needed After Primary Plug Pumped By HES	0
Nbr of Remedial Sqz Jobs Rqd - HES Number Of Remedial Squeeze Jobs Required After Primary Job Performed By HES	0