
WILLIAMS PRODUCTION RMT INC - EBUS

**GM 443-22
GRAND VALLEY
Garfield County , Colorado**

Cement Surface Casing **29-Apr-2011**

Post Job Summary

The Road to Excellence Starts with Safety

Sold To #: 300721	Ship To #: 2850327	Quote #:	Sales Order #: 8124623
Customer: WILLIAMS PRODUCTION RMT INC - EBUS	Customer Rep: WILSON, W.C		
Well Name: GM	Well #: 443-22	API/UWI #: 05-045-20218	
Field: GRAND VALLEY	City (SAP): PARACHUTE	County/Parish: Garfield	State: Colorado
Lat: N 39.5 deg. OR N 39 deg. 29 min. 59.395 secs.	Long: W 108.088 deg. OR W -109 deg. 54 min. 44.323 secs.		
Contractor: H&P 280	Rig/Platform Name/Num: H&P 280		
Job Purpose: Cement Surface Casing			
Well Type: Development Well	Job Type: Cement Surface Casing		
Sales Person: SCOTT, KYLE	Srvc Supervisor: ANGLESTEIN, TROY	MBU ID Emp #: 436099	

Job Personnel

HES Emp Name	Exp Hrs	Emp #	HES Emp Name	Exp Hrs	Emp #	HES Emp Name	Exp Hrs	Emp #
ANGLESTEIN, TROY Edward WM	4.5	436099	BRENNECKE, ANDREW Bailey	4.5	486345	JENSEN, JESSE Robert	4.5	478774
PHILLIPS, MARK Bejar	4.5	445272						

Equipment

HES Unit #	Distance-1 way	HES Unit #	Distance-1 way	HES Unit #	Distance-1 way	HES Unit #	Distance-1 way
10551730C	60 mile	10592964	60 mile	10744549	60 mile	10951250	60 mile
10973571	60 mile						

Job Hours

Date	On Location Hours	Operating Hours	Date	On Location Hours	Operating Hours	Date	On Location Hours	Operating Hours
04/28/2011	1.5	0	04/29/2011	3	1			
TOTAL			Total is the sum of each column separately					

Job

Job Times

Formation Name	Formation Depth (MD)	Top	Bottom	Form Type	Job depth MD	Job Depth TVD	Water Depth	Perforation Depth (MD)	From	To
				BHST	1220. ft	1220. ft	4. ft			

Well Data

Description	New / Used	Max pressure psig	Size in	ID in	Weight lbm/ft	Thread	Grade	Top MD ft	Bottom MD ft	Top TVD ft	Bottom TVD ft
OPEN HOLE				13.5				.	1220.		
SURFACE CASING	Unknown		9.625	9.001	32.3		H-40	.	1207.8		

Tools and Accessories

Type	Size	Qty	Make	Depth	Type	Size	Qty	Make	Depth	Type	Size	Qty	Make
Guide Shoe					Packer					Top Plug	9.625	1	HES
Float Shoe					Bridge Plug					Bottom Plug			
Float Collar					Retainer					SSR plug set			
Insert Float										Plug Container	9.625	1	HES
Stage Tool										Centralizers			

Miscellaneous Materials

Gelling Agt	Conc	Surfactant	Conc	Acid Type	Qty	Conc	%
Treatment Fld	Conc	Inhibitor	Conc	Sand Type	Size	Qty	

Fluid Data

Stage/Plug #: 1	Stage Type	Fluid Name	Qty	Qty uom	Mixing Density lbm/gal	Yield ft/sk	Mix Fluid Gal/sk	Rate bbl/min	Total Mix Fluid Gal/sk
Fluid #									

Stage/Plug #: 1									
Fluid #	Stage Type	Fluid Name	Qty	Qty uom	Mixing Density lbm/gal	Yield ft ³ /sk	Mix Fluid Gal/sk	Rate bbl/min	Total Mix Fluid Gal/sk
1	Fresh Water Spacer		20.00	bbl	.	.0	.0	6	
2	VersaCem Lead Cement	VERSACEM (TM) SYSTEM (452010)	160.0	sacks	12.3	2.38	13.75	8	13.75
3	VersaCem Tail Cement	VERSACEM (TM) SYSTEM (452010)	160.0	sacks	12.8	2.11	11.76	8	11.76
		11.76 Gal	FRESH WATER						
4	Displacement Fluid		92.00	bbl	8.34	.0	.0	10	
Calculated Values		Pressures		Volumes					
Displacement	91.5	Shut In: Instant		Lost Returns	0	Cement Slurry	127.9	Pad	
Top Of Cement	SURFACE	5 Min		Cement Returns	26	Actual Displacement	91.5	Treatment	
Frac Gradient		15 Min		Spacers	20	Load and Breakdown		Total Job	240
Rates									
Circulating		Mixing	8	Displacement	10	Avg. Job		8	
Cement Left In Pipe	Amount	44.3 ft	Reason	Shoe Joint					
Frac Ring # 1 @	ID	Frac ring # 2 @	ID	Frac Ring # 3 @	ID	Frac Ring # 4 @	ID		
The Information Stated Herein Is Correct				Customer Representative Signature					

The Road to Excellence Starts with Safety

Sold To #: 300721	Ship To #: 2850327	Quote #:	Sales Order #: 8124623
Customer: WILLIAMS PRODUCTION RMT INC - EBUS	Customer Rep: WILSON, W.C		
Well Name: GM	Well #: 443-22	API/UWI #: 05-045-20218	
Field: GRAND VALLEY	City (SAP): PARACHUTE	County/Parish: Garfield	State: Colorado
Legal Description:			
Lat: N 39.5 deg. OR N 39 deg. 29 min. 59.395 secs.		Long: W 108.088 deg. OR W -109 deg. 54 min. 44.323 secs.	
Contractor: H&P 280	Rig/Platform Name/Num: H&P 280		
Job Purpose: Cement Surface Casing	Ticket Amount:		
Well Type: Development Well	Job Type: Cement Surface Casing		
Sales Person: SCOTT, KYLE	Srvc Supervisor: ANGLESTEIN, TROY	MBU ID Emp #: 436099	

Activity Description	Date/Time	Cht #	Rate bbl/min	Volume bbl		Pressure psig		Comments
				Stage	Total	Tubing	Casing	
Call Out	04/28/2011 17:00							
Pre-Convoy Safety Meeting	04/28/2011 20:45							ALL HES EMPLOYEES
Arrive At Loc	04/28/2011 22:30							RIG STILL RUNNING CASING CIRCULATED FOR 1 HOUR
Assessment Of Location Safety Meeting	04/28/2011 22:45							ALL HES EMPLOYEES
Rig-Up Equipment	04/28/2011 23:00							1 HT 400 PUMP TRUCK, 1 660 BULK TRUCK, 1 9.625 QUICK LATCH PLUG CONTAINER, 1 F 450 P/U
Pre-Job Safety Meeting	04/29/2011 01:00							ALL HES EMPLOYEES, RIG CREW, CO REP.
Start Job	04/29/2011 01:08							9.625 CASING SET AT 1207.8', FC 1163.54', TD: 1220, OPEN HOLE 13.5", MUD WT 10.7 PPG, 600 BBLs OF H2O ON LOCATION, WATER SAMPLE SUBMITTED.
Pump Water	04/29/2011 01:09		2	2			41.0	FILL LINES
Pressure Test	04/29/2011 01:11		0.5	0.5		4260.0		NO LEAKS
Pump Spacer 1	04/29/2011 01:15		6	20			200.0	FRESH WATER
Activity Description	Date/Time	Cht #	Rate bbl/min	Volume bbl		Pressure psig		Comments
				Stage	Total	Tubing	Casing	

Sold To #: 300721

Ship To #: 2850327

Quote #:

Sales Order #:

8124623

SUMMIT Version: 7.20.130

Friday, April 29, 2011 03:13:00

Cementing Job Log

Pump Lead Cement	04/29/2011 01:23		8	67.8			280.0	160 SKS VERSACEM CMT TO BE MIXED AT 12.3 PPG, 2.38 YIELD, 13.75 GAL/SK, CMT TO BE WEIGHED VIA PRESSURE BALANCED MUD SCALES WET AND DRY SAMPLES SUBMITTED
Pump Tail Cement	04/29/2011 01:32		8	60.1			270.0	160 SKS VERSACEM CMT TO BE MIXED AT 12.8 PPG, 2.11 YIELD, 11.75 GAL/SK, CMT TO BE WEIGHED VIA PRESSURE BALANCED MUD SCALES. WET AND DRY SAMPLES SUBMITTED.
Shutdown	04/29/2011 01:39							FOR NO MORE THEN 5 MINUTES,
Pump Displacement	04/29/2011 01:42		10	91.5			510.0	FRESHWATER
Cement Returns to Surface	04/29/2011 01:46		10	65			470.0	26 BBLS OF CEMENT TO SURFACE.
Slow Rate	04/29/2011 01:51		2	81			270.0	10 BBLS PRIOR TO CALCULATED DISPLACEMENT
Drop Plug	04/29/2011 01:54							PLUG LAUNCHED
Bump Plug	04/29/2011 01:54		2	91.5			303.0	PLUG LANDED AT 803 HELD FOR TWO MINUTES
Check Floats	04/29/2011 01:56							FLOATS HOLDING, NO ANNULAR FLOW AT SHAKERS NOTED
End Job	04/29/2011 01:57							THANK YOU FOR USING HES FROM TROY ANGLESTEIN AND CREW.
Post-Job Safety Meeting (Pre Rig-Down)	04/29/2011 02:00							ALL HES EMPLOYEES
Rig-Down Equipment	04/29/2011 02:30							SAFELY
Pre-Convoy Safety Meeting	04/29/2011 02:50							ALL HES EMPLOYEES
Crew Leave Location	04/29/2011 03:00							SITE WAS AS CLEAN AS WHEN WE ARRIVED

Sold To # : 300721

Ship To # :2850327

Quote # :

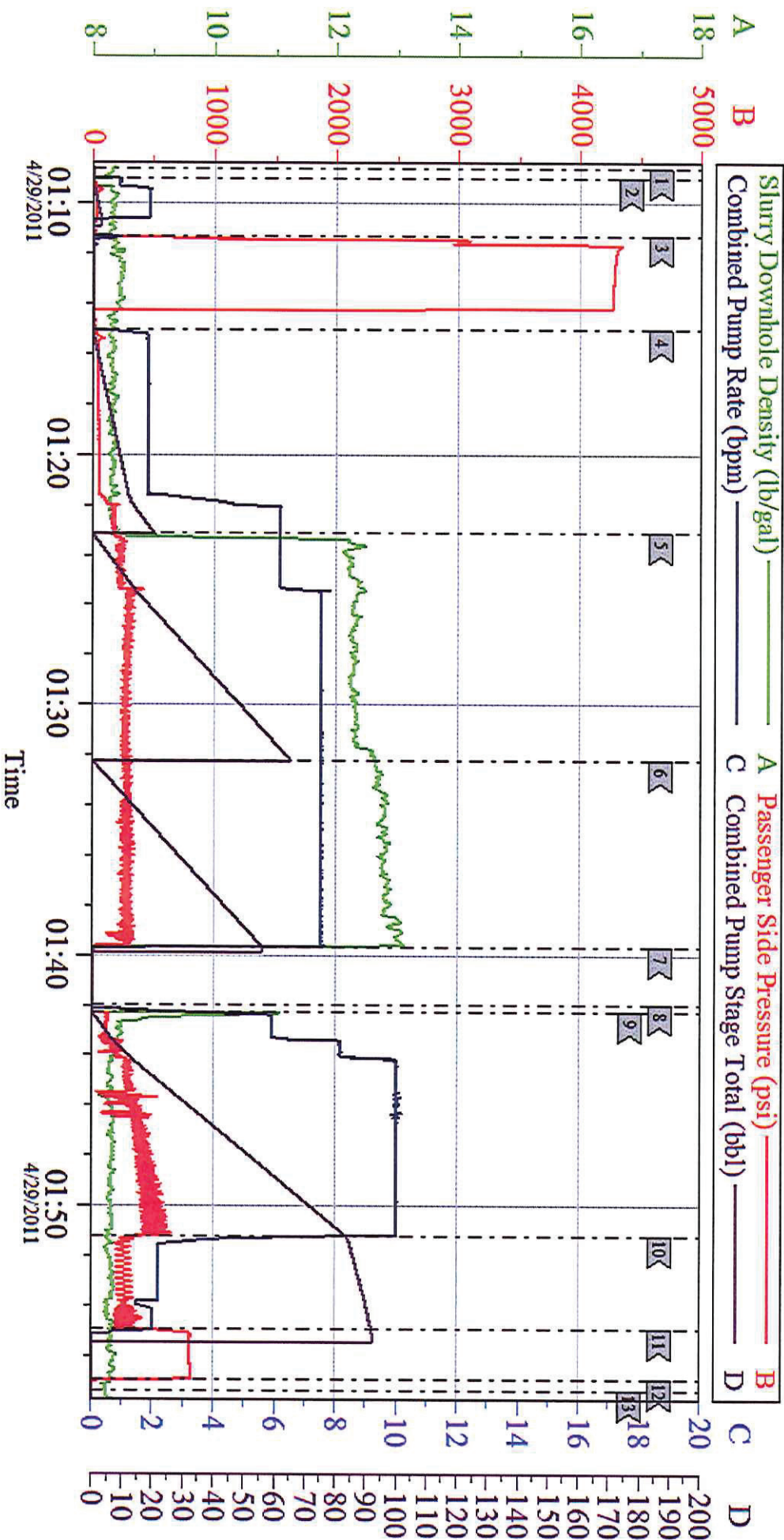
Sales Order # : 8124623

SUMMIT Version: 7.20.130

Friday, April 29, 2011 03:13:00

WILLIAMS

GM 443-22 SURFACE



Customer: Hallburton	Job Date: 29-Apr-2011	Sales Order #: 01:08:33
Well Description: GM 443-22	Job Type: SURFACE	ADC Used: YES
Company Rep: W.C. WILSON	Supervisor: TROY ANGLESTEIN	Elite 2: MARK PHILLIPS