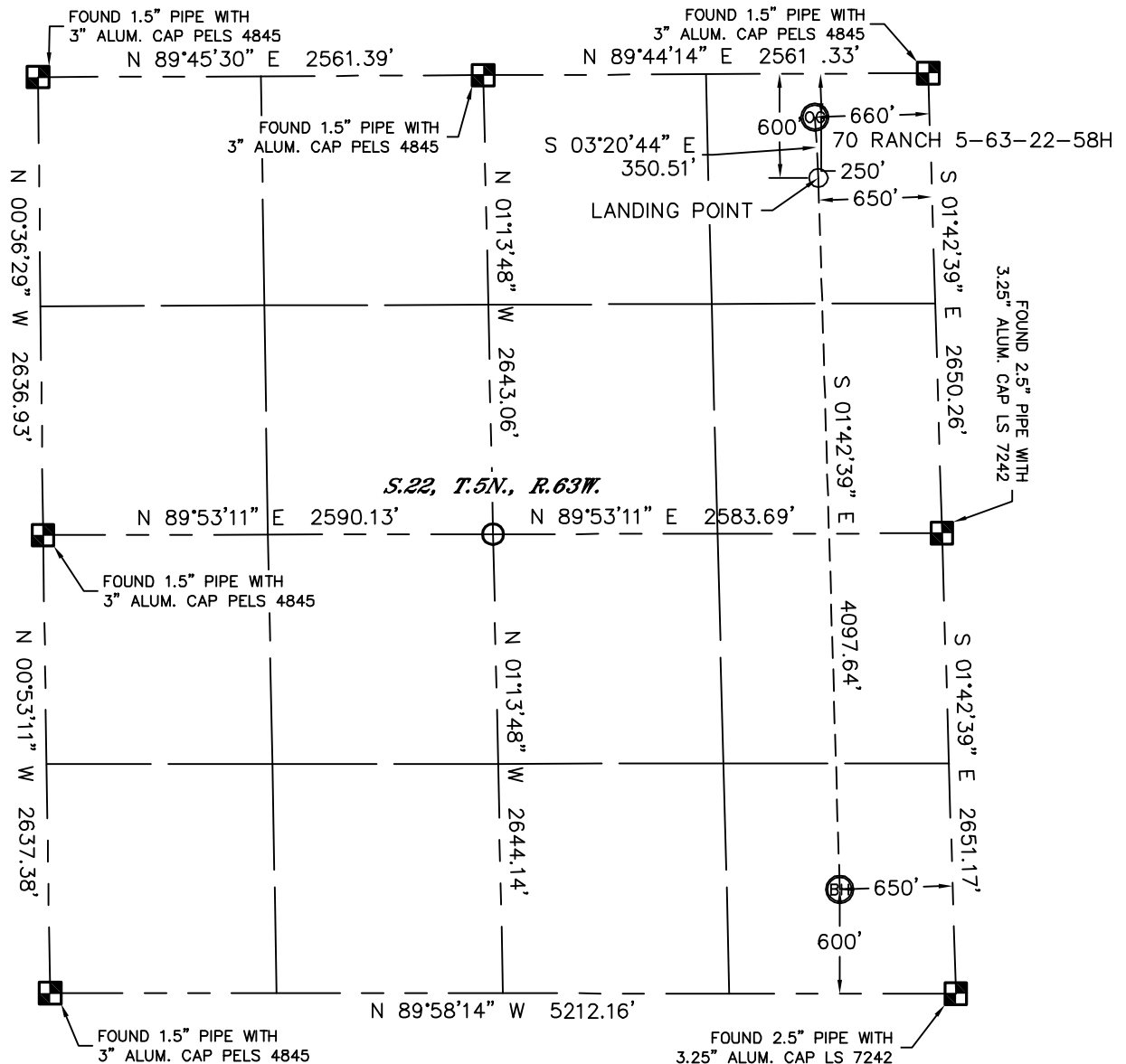




Lat40°, Inc. 1635 Foxtrail Drive, Suite 325 Loveland, CO 970-776-3321

# WELL LOCATION CERTIFICATE

SECTION: 22  
TOWNSHIP: 5N  
RANGE: 63W



In accordance with a request from Glenn Berglund with BILL BARRETT CORPORATION Lat40°, Inc. has determined, and staked on the ground as shown, the surface location of the 70 RANCH 5-63-22-58H to be 250' from the NORTH line and 660' from the EAST line and the bottom hole to be 600' from the SOUTH line and 650' from the EAST line as measured at right angles from the section lines of Section 22, Township 5 North, Range 63 West of the Sixth Principal Meridian, County of Weld, State of Colorado.

I hereby state that this Well Location Certificate was prepared by me, or under my direct supervision, that the fieldwork was completed on 3/22/11, for and on behalf of BILL BARRETT CORPORATION That this is not a Land Survey Plat or an Improvement Survey Plat, and that it is not to be relied upon for establishment of fence, building, or other future improvement lines.

## NOTE:

- 1) Bearings shown are Grid Bearings of the Colorado State Plane Coordinate System, North Zone, North American Datum 1983/2007. The lineal dimensions as contained herein are based upon the "U.S. Survey Foot."
- 2) Ground elevations are based on an observed GPS elevation (NAVD 1988 DATUM).
- 3) IMPROVEMENTS: See LOCATION DRAWING exhibit for all visible improvements within 400' of disturbed area.
- 4) SURFACE USE: RANGELAND
- 5) INSTRUMENT OPERATOR: BRIAN BRINKMAN

## SURFACE LOCATION

LAT: 40.39139°N (40°23'29.0"N)  
LONG: 104.41511°W (104°24'54.4"W)  
PDOP: 1.2  
ELEV: 4637'  
1/4, 1/4: NE1/4NE1/4  
NEAREST PROPERTY LINE: 250' NORTH

## BOTTOM HOLE

LAT: 40.37918°N (40°22'45.1"N)  
LONG: 104.41479°W (104°24'53.3"N)

## LANDING POINT

LAT: 40.39043°N (40°23'25.5"N)  
LONG: 104.41505°W (104°24'54.2"W)

## LEGEND



= ALIQUOT MONUMENT AS DESCRIBED



= CALCULATED POSITION

## NOTE

According to Colorado law, you must commence any legal action based upon any defect in this W.L.C. within three years after you discover such defect. In no event, may any action based upon any defect in this survey be commenced more than ten years after the date of the certificate shown hereon. (13-80-105 C.R.S.)

Brian T. Brinkman—On behalf of Lat40°, Inc.  
Colorado Licensed Professional Land Surveyor No. 38175  
DATE: 3/7/12  
PROJECT#: 2010044

