

BERRY PETROLEUM COMPANY

ADDENDUM TO LEGAL PLAT FOR

WELL PAD B21 696

SECTION 21, T6S, R96W, 6th P.M.

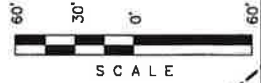
NE 1/4 NE 1/4



Sheet 1m of 12

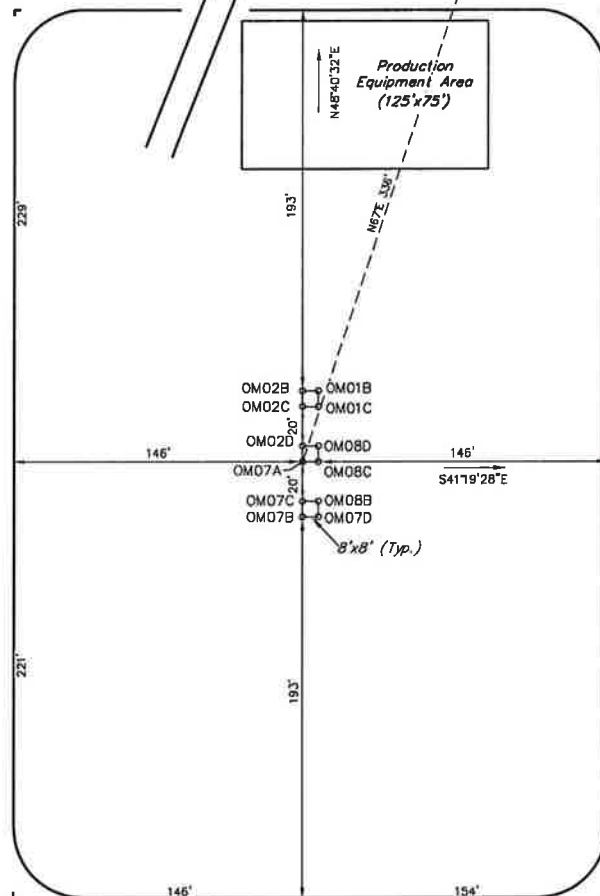
SCALE: 1" = 60'
DATE: 02-27-12
DRAWN BY: D.R.B.

0.5000 040004
0.5000 040010
0.5000 04012C
0.5000 04017C
0.5000 04018
0.5000 04019
0.5000 04024 (Per. Note)
0.5000 04024



Proposed Access Road

Existing Well Pad A21-696



SWMP LEGEND:

SCE - STABILIZED
CONSTRUCTION
ENTRANCE
ST - SEDIMENT TRAP

SURFACE USE OF LOCATION IS
GRAZING. VEGETATION CONSISTS
MAINLY OF SAGEBRUSH, OAK
BRUSH & NATIVE GRASSES.

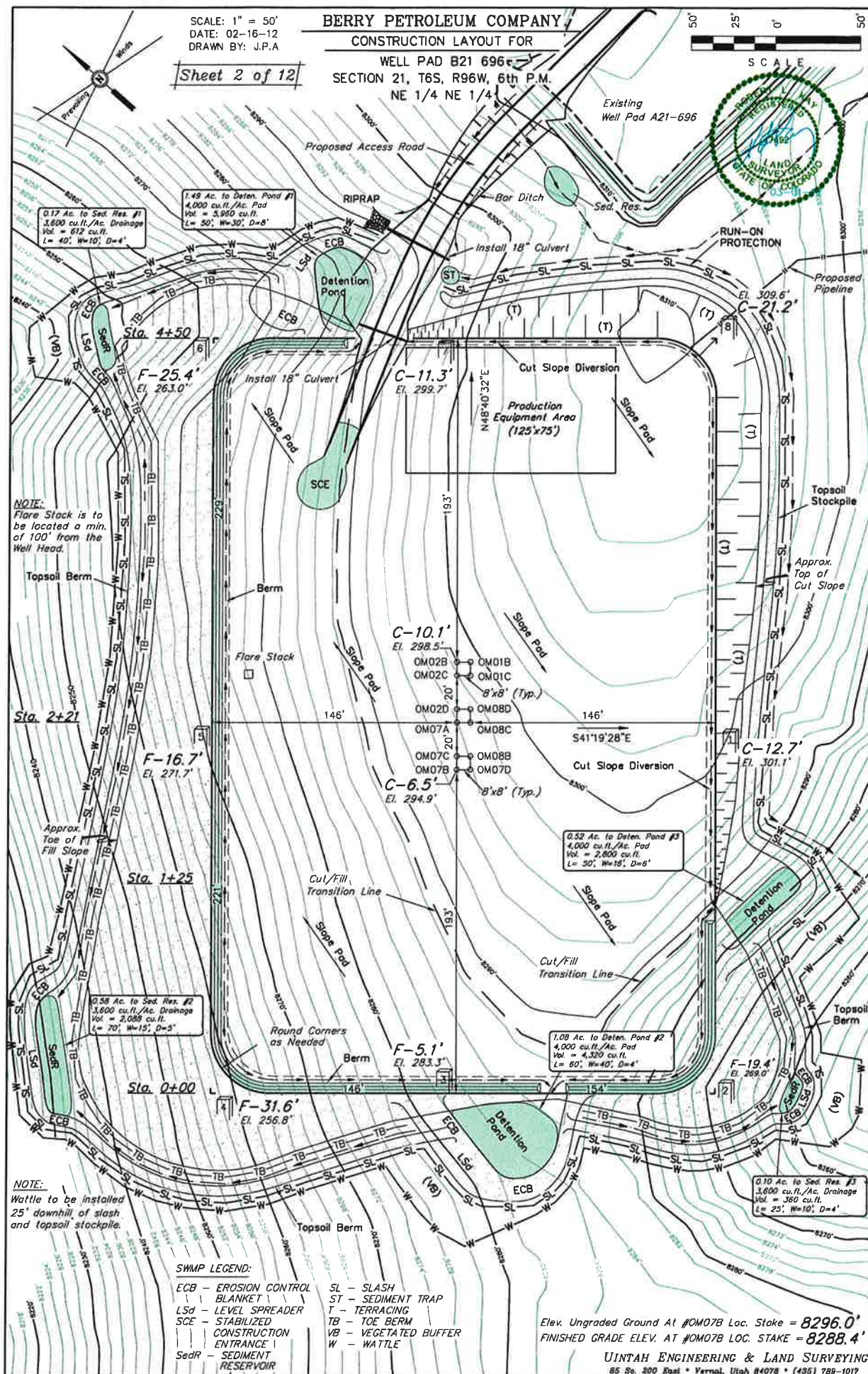
SCALE: 1" = 50'
DATE: 02-16-12
DRAWN BY: J.P.A.

BERRY PETROLEUM COMPANY

CONSTRUCTION LAYOUT FOR

WELL PAD B21 696
SECTION 21, T6S, R96W, 6th P.M.
NE 1/4 NE 1/4

Sheet 2 of 12



NOTE:
Flare Stack is to be located a min. of 100' from the Well Head.

NOTE:
Wattle to be installed 25' downhill of slash and topsoil stockpile.

SWMP LEGEND:

- ECB - EROSION CONTROL BLANKET
- LSD - LEVEL SPREADER
- SCE - STABILIZED CONSTRUCTION ENTRANCE
- SedR - SEDIMENT RESERVOIR
- SL - SLASH
- ST - SEDIMENT TRAP
- T - TERRACING
- TB - TOE BERM
- VB - VEGETATED BUFFER
- W - WATTLE

Elev. Ungraded Ground At #OM07B Loc. Stake = 8296.0'
FINISHED GRADE ELEV. AT #OM07B LOC. STAKE = 8288.4'

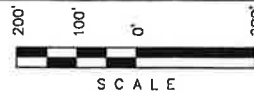
UINTAH ENGINEERING & LAND SURVEYING
85 So. 200 East • Vernal, Utah 84078 • (435) 788-1017

SCALE: 1" = 200'
DATE: 02-27-12
DRAWN BY: D.R.B.

BERRY PETROLEUM COMPANY

LOCATION DRAWING

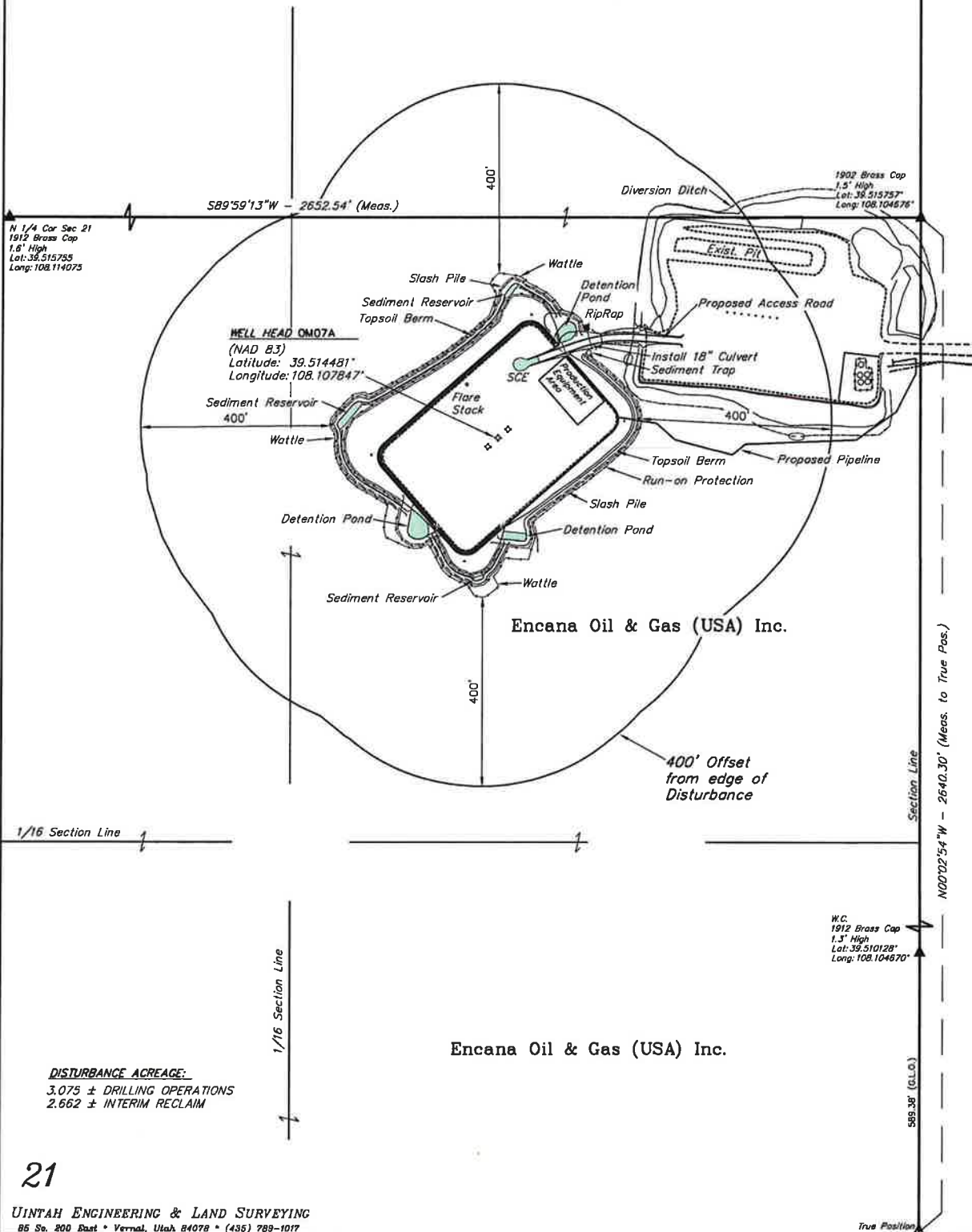
WELL PAD B21 696
SECTION 21, T6S, R96W, 6th P.M.
NE 1/4 NE 1/4



Sheet 2a of 12



Encana Oil & Gas (USA) Inc.



DISTURBANCE ACREAGE:
3.075 ± DRILLING OPERATIONS
2.662 ± INTERIM RECLAIM

BERRY PETROLEUM COMPANY
CONSTRUCTION LAYOUT CROSS SECTION FOR

WELL PAD B21 696

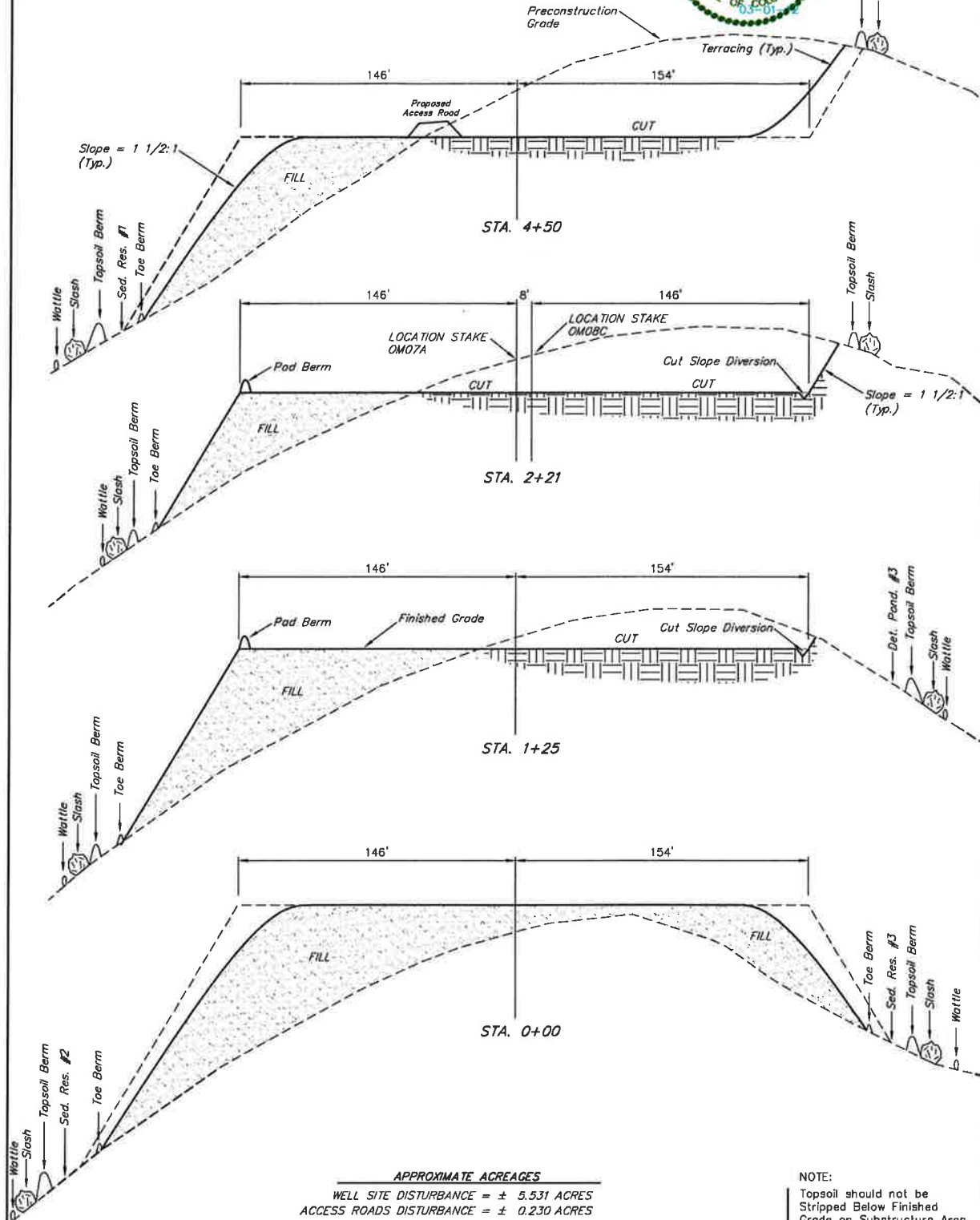
SECTION 21, T6S, R96W, 6th P.M.

NE 1/4 NE 1/4

Sheet 3 of 12

X-Section
 Scale
 1" = 50'

DATE: 02-16-12
 DRAWN BY: J.P.A.



APPROXIMATE ACREAGES

WELL SITE DISTURBANCE = ± 5.531 ACRES
 ACCESS ROADS DISTURBANCE = ± 0.230 ACRES
 PIPELINE DISTURBANCE = ± 0.552 ACRES
 TOTAL = ± 6.313 ACRES

APPROXIMATE YARDAGES

(6") Topsoil Stripping = 3,490 Cu. Yds.
 Remaining Location = 34,960 Cu. Yds.
 TOTAL CUT = 38,450 CU.YDS.
 FILL = 34,650 CU.YDS.

EXCESS MATERIAL = 3,800 Cu. Yds.
 Topsoil = 3,490 Cu. Yds.
 EXCESS UNBALANCE = 310 Cu. Yds. **
 (After Interim Rehabilitation)

NOTE:

Topsoil should not be Stripped Below Finished Grade on Substructure Area.

* NOTE:
 FILL QUANTITY INCLUDES 5% FOR COMPACTION

**USE EXCESS MATERIAL FROM THIS PAD TO CONSTRUCT ACCESS ROAD

UINTAH ENGINEERING & LAND SURVEYING
 85 So. 200 East • Vernal, Utah 84078 • (435) 789-1017

UINTAH ENGINEERING & LAND SURVEYING
85 So. 200 East • Vernal, Utah 84078 • (435) 788-1017