

LEGEND:

- | | |
|-----------------|-----------------------|
| DISPOSAL WELLS | WATER WELLS |
| PRODUCING WELLS | ABANDONED WELLS |
| SHUT IN WELLS | TEMPORARILY ABANDONED |



BERRY PETROLEUM COMPANY

WELL PAD B21 696
SECTION 21, T6S, R96W, 6th P.M.
NE 1/4 NE 1/4

SHEET 11 OF 12



Utah Engineering & Land Surveying
85 South 200 East Vernal, Utah 84078
(435) 789-1017 * FAX (435) 789-1813

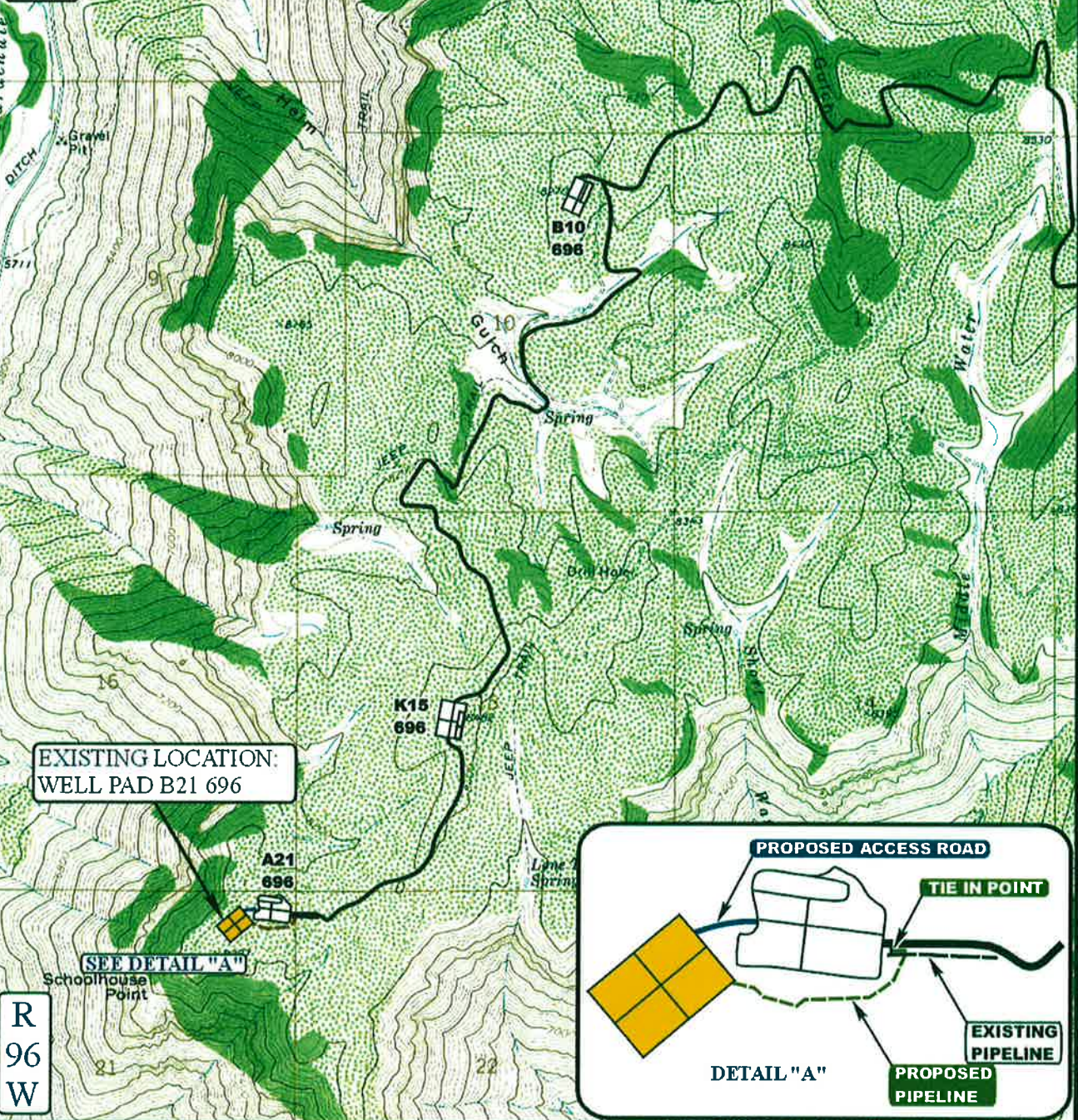
TOPOGRAPHIC MAP

SCALE: 1" = 2000' DRAWN BY: JLG REVISED: 00-00-00

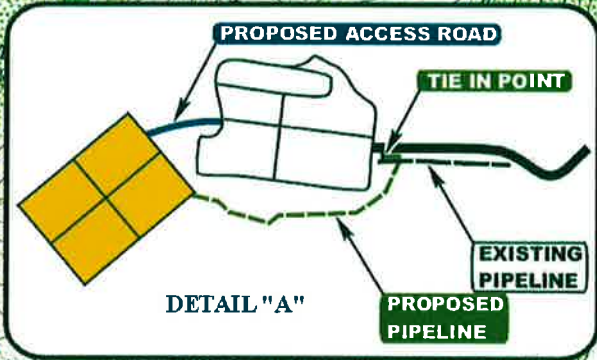
02 28 12
MONTH DAY YEAR



T6S



R
96
W



APPROXIMATE TOTAL PIPELINE DISTANCE = 802' +/-

LEGEND:

- EXISTING PIPELINE
- - - - PROPOSED PIPELINE
- PROPOSED ACCESS

BERRY PETROLEUM COMPANY

WELL PAD B21 696
SECTION 21, T6S, R96W, 6th P.M.
NE 1/4 NE 1/4

SHEET 12 OF 12



Uintah Engineering & Land Surveying
85 South 200 East Vernal, Utah 84078
(435) 789-1017 * FAX (435) 789-1813



TOPOGRAPHIC
MAP

02 28 12
MONTH DAY YEAR

SCALE: 1" = 2000' DRAWN BY: JLG REVISED: 00-00-00

