

LEGEND:

PROPOSED LOCATION

N

BERRY PETROLEUM COMPANY

WELL PAD B21 696
SECTION 21, T6S, R96W, 6th P.M.
NE 1/4 NE 1/4

SHEET 10 OF 12



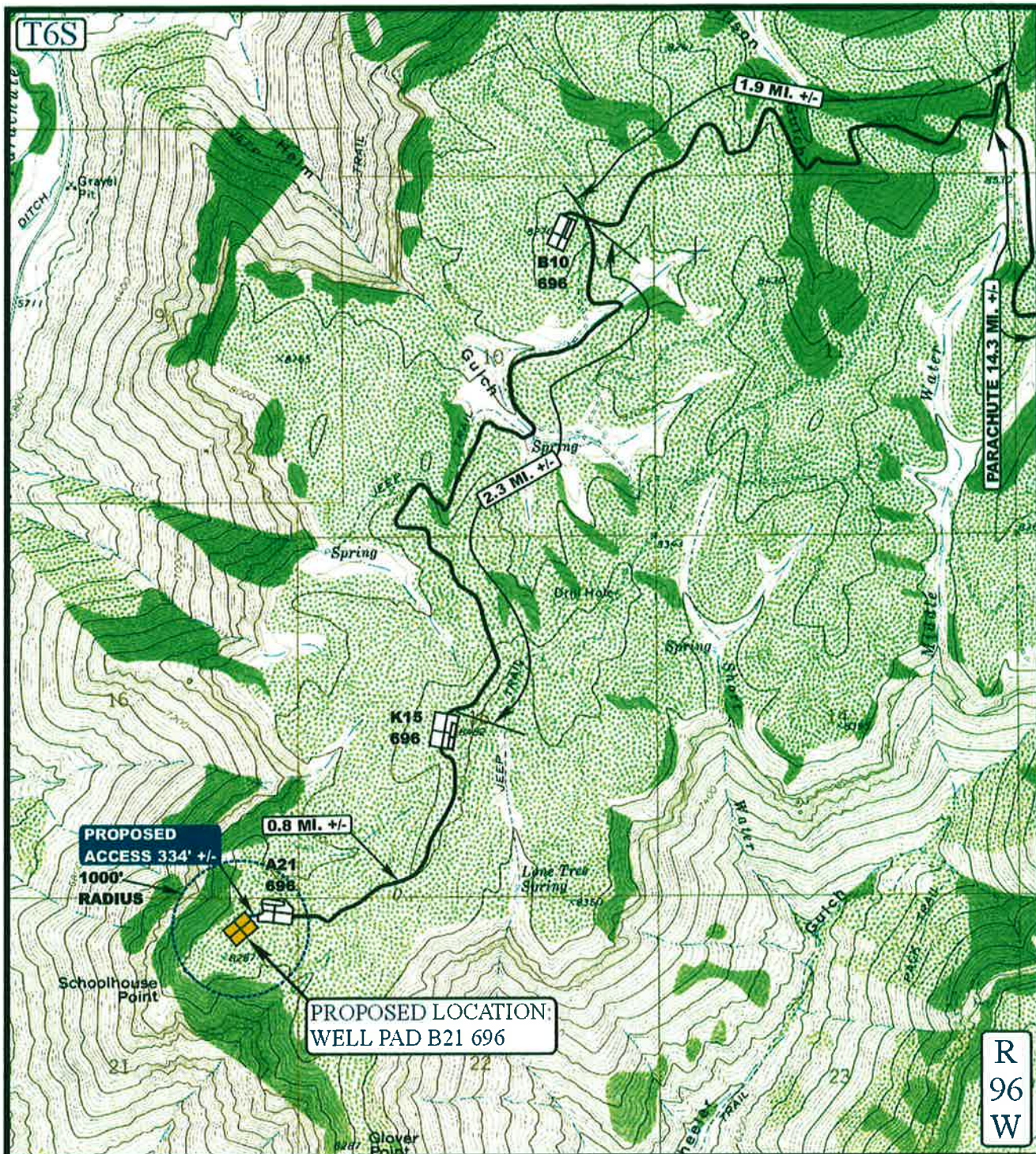
Uintah Engineering & Land Surveying
85 South 200 East Vernal, Utah 84078
(435) 789-1017 * FAX (435) 789-1813

ACCESS ROAD
MAP

02 **28** **12**
MONTH **DAY** **YEAR**

SCALE: 1:100,000 **DRAWN BY: J.L.G.** **REVISED: 00-00-00**





R
96
W

LEGEND:

----- PROPOSED ACCESS ROAD
 ===== EXISTING ROAD

BERRY PETROLEUM COMPANY

WELL PAD B21 696
 SECTION 21, T6S, R96W, 6th P.M.
 NE 1/4 NE 1/4

SHEET 5 OF 12



Uintah Engineering & Land Surveying
 85 South 200 East Vernal, Utah 84078
 (435) 789-1017 * FAX (435) 789-1813

ACCESS ROAD
 MAP

02 28 12
 MONTH DAY YEAR

B
 TOPO

SCALE: 1" = 2000' DRAWN BY: J.L.G. REVISED: 00-00-00