

T6S, R96W, 6th P.M.

SCHOOL HOUSE POINT OM02B B21 696
Elev. Ungraded Ground = 8298'
Elev. Graded Ground = 8288'

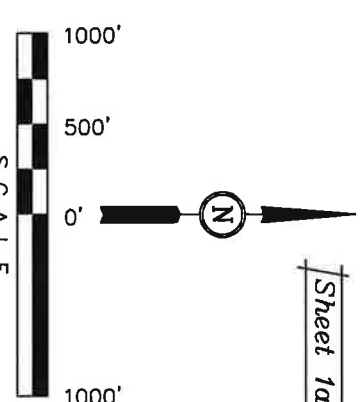
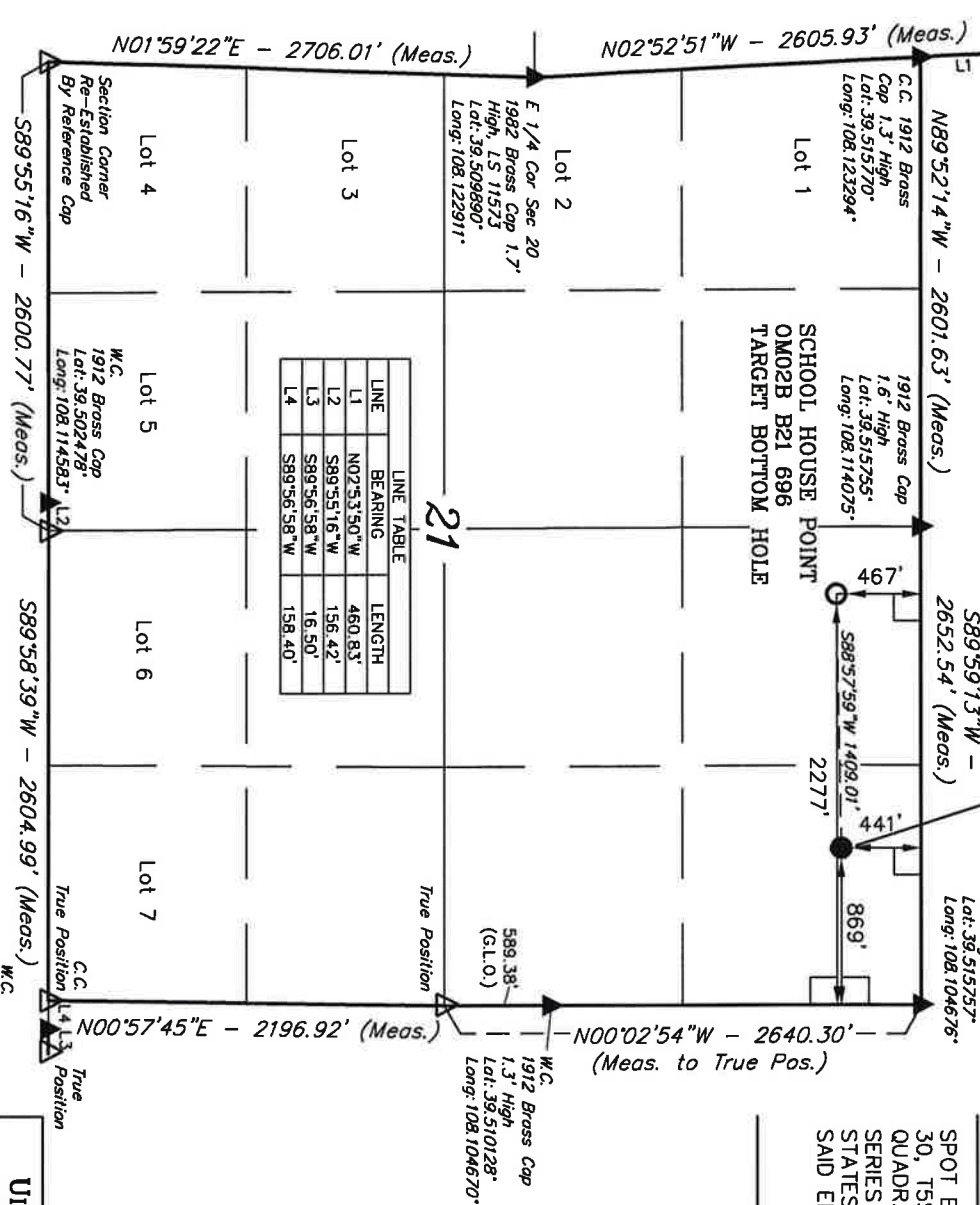
BERRY PETROLEUM COMPANY
Well location, SCHOOL HOUSE POINT OM02B B21 696, located as shown in the NE 1/4 NE 1/4 of Section 21, T6S, R96W, 6th P.M., Garfield County, Colorado.
BASIS OF ELEVATION

SPOT ELEVATION AT THE NORTHWEST CORNER OF SECTION 30, T5S, R95W, 6th P.M. TAKEN FROM THE FORKED GULCH QUADRANGLE, COLORADO, GARFIELD COUNTY, 7.5 MINUTE SERIES (TOPOGRAPHICAL MAP) PUBLISHED BY THE UNITED STATES DEPARTMENT OF THE INTERIOR, GEOLOGICAL SURVEY. SAID ELEVATION IS MARKED AS BEING 5966 FEET.

BASIS OF BEARINGS

BASIS OF BEARINGS IS A G.P.S. OBSERVATION.

Sheet 1a of 12



CERTIFICATE
THIS IS TO CERTIFY THAT THE ABOVE PLAT WAS PREPARED AND LOCATION AS SHOWN WAS STAKED ON THE GROUND IN THE FIELD NOTES OF ACTUAL SURVEYS MADE BY ME OR UNDER MY CLOSE SUPERVISION AND THAT THE SAME ARE TRUE AND CORRECT TO THE BEST OF MY KNOWLEDGE AND BELIEF.

REGISTERED AND EXPIRING
REGISTRATION NUMBER 11920
STATE OF COLORADO
02-01-12

UNITAH ENGINEERING & LAND SURVEYING
85 SOUTH 200 EAST - VERNAL, UTAH 84078
(435) 789-1017

SCALE 1" = 1000'
DATE SURVEYED: 02-07-12
DATE DRAWN: 02-28-12

PARTY B.J. T.M. D.R.B.
REFERENCES G.L.O. PLAT

WEATHER COLD
FILE BERRY PETROLEUM COMPANY

LEGEND:

- 90° SYMBOL
- PROPOSED WELL HEAD.
- SECTION CORNERS LOCATED.
- SECTION CORNERS RE-EST. (Not Set on Ground)

NOTE:
SEE APPENDUM PLAT FOR EXISTING IMPROVEMENTS WITHIN 400' OF THE PROPOSED WELL DISTURBANCE.

MAD 83 (TARGET BOTTOM HOLE)		MAD 83 (SURFACE LOCATION)	
LATITUDE = 39°30'52.11" (39.514475)		LATITUDE = 39°30'52.36" (39.514544)	
LONGITUDE = 108°06'43.86" (108.112744)		LONGITUDE = 108°06'27.91" (108.107753)	
MAD 27 (TARGET BOTTOM HOLE)		MAD 27 (SURFACE LOCATION)	
LATITUDE = 39°30'52.19" (39.514497)		LATITUDE = 39°30'52.44" (39.514567)	
LONGITUDE = 108°06'43.60" (108.112111)		LONGITUDE = 108°06'25.63" (108.107119)	

BERRY PETROLEUM COMPANY

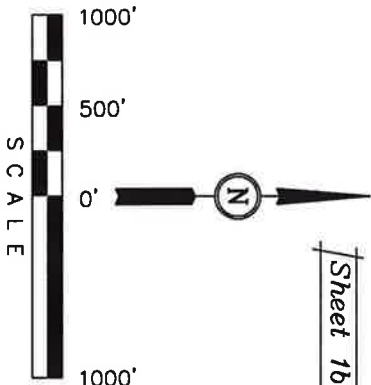
Well location, SCHOOL HOUSE POINT OM01B B21 696, located as shown in the NE 1/4 NE 1/4 of Section 21, T6S, R96W, 6th P.M., Garfield County, Colorado.

BASIS OF ELEVATION

SPOT ELEVATION AT THE NORTHWEST CORNER OF SECTION 30, T5S, R35W, 6th P.M. TAKEN FROM THE FORKED GULCH QUADRANGLE, COLORADO, GARFIELD COUNTY, 7.5 MINUTE SERIES (TOPOGRAPHICAL MAP) PUBLISHED BY THE UNITED STATES DEPARTMENT OF THE INTERIOR, GEOLOGICAL SURVEY, SAID ELEVATION IS MARKED AS BEING 5966 FEET.

BASIS OF BEARINGS

BASIS OF BEARINGS IS A G.P.S. OBSERVATION.



CERTIFICATE

THIS IS TO CERTIFY THAT THE ABOVE PLANT WAS BREEDER AND LOCATION AS SHOWN WAS STAKED ON THE BROWNSBORO FIELD NOTES OF ACTUAL SURVEYS MADE BY ME OR UNDER MY SUPERVISION AND THAT THE SAME ARE TRUE AND CORRECT TO THE BEST OF MY KNOWLEDGE AND BELIEF.

REGISTERED AND EMPLOYED
REGISTRATION NUMBER
STATE OF COLORADO
CCK-0113

(Not Set on Ground)

NOTE:
SEE ADDENDUM PLAT FOR EXISTING
IMPROVEMENTS WITHIN 400' OF THE
PROPOSED WELL DISTURBANCE.

NAD 83 (TARGET BOTTOM HOLE)		NAD 83 (SURFACE LOCATION)	
LATITUDE = 39.30.51.47° (39.514303)	LATITUDE = 39.30.52.30° (39.514528)		
LONGITUDE = 108.06.26.57" (108.107381)	LONGITUDE = 108.06.27.84" (108.107733)		
NAD 27 (TARGET BOTTOM HOLE)		NAD 27 (SURFACE LOCATION)	
LATITUDE = 39.30.51.57" (39.514325)	LATITUDE = 39.30.52.38" (39.514550)		
LONGITUDE = 108.06.24.29" (108.106747)	LONGITUDE = 108.06.25.56" (108.107110)		

LE 1" - 1000'

B.J. T.M. D.R.B.

REFERENCES

DATE SURVEYED:	DATE DRAWN:
02-07-12	02-28-12

UNTAH ENGINEERING & LAND SURVEYING
85 SOUTH 200 EAST - VERNAL, UTAH 84078

(435) 789-1017

COLD

BERRY PETROLEUM COMPANY

T6S, R96W, 6th P.M.

SCHOOL HOUSE POINT OM01C B21 696

Elev. Ungraded Ground = 8299'

Elev. Graded Ground = 8288'

BERRY PETROLEUM COMPANY

Well location, SCHOOL HOUSE POINT OM01C B21 696, located as shown in the NE 1/4 NE 1/4 of Section 21, T6S, R96W, 6th P.M., Garfield County, Colorado.

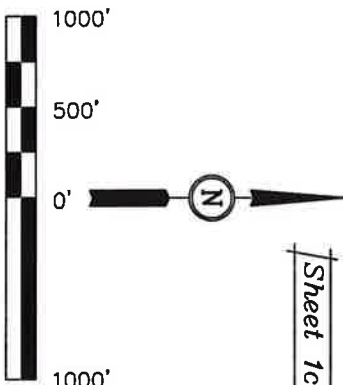
BASIS OF ELEVATION

SPOT ELEVATION AT THE NORTHWEST CORNER OF SECTION 30, T5S, R95W, 6th P.M. TAKEN FROM THE FORKED GULCH QUADRANGLE, COLORADO, GARFIELD COUNTY, 7.5 MINUTE SERIES (TOPOGRAPHICAL MAP) PUBLISHED BY THE UNITED STATES DEPARTMENT OF THE INTERIOR, GEOLOGICAL SURVEY. SAID ELEVATION IS MARKED AS BEING 5966 FEET.

BASIS OF BEARINGS

BASIS OF BEARINGS IS A G.P.S. OBSERVATION.

Sheet 1c of 12



CERTIFICATE

THIS IS TO CERTIFY THAT THE ABOVE PLAT WAS PREPARED AND LOCATION AS SHOWN WAS STAKED ON THE GROUND'S SURFACE BY THE SURVEYOR AND UNDER MY CLOSE SUPERVISION AND THAT THE SAME ARE TRUE AND CORRECT TO THE BEST OF MY KNOWLEDGE AND BELIEF.

REGISTERED AND SURVEYOR
REGISTRATION NO. 1992
STATE OF COLORADO
02-07-12

UINTAH ENGINEERING & LAND SURVEYING

85 SOUTH 200 EAST - VERNAL, UTAH 84078

(435) 789-1017

SCALE 1" = 1000'

DATE SURVEYED:

DATE DRAWN:

PARTY

B.J. T.M. D.R.B.

REFERENCES

G.L.O. PLAT

WEATHER

COLD

FILE

BERRY PETROLEUM COMPANY

LEGEND:

— = 90° SYMBOL

● = PROPOSED WELL HEAD.

▲ = SECTION CORNERS LOCATED.

△ = SECTION CORNERS RE-EST.

(Not Set on Ground)

NOTE:
SEE APPENDUM PLAT FOR EXISTING
IMPROVEMENTS WITHIN 400' OF THE
PROPOSED WELL DISTURBANCE.

PDOP = 1.2

W.C. 1912 Brass Cap

1.0' High

Long: 108.104239'

NAD 83 (TARGET BOTTOM HOLE)

LATITUDE = 39°30'48.27" (39.513408)

LONGITUDE = 108°06'26.73" (108.107423)

NAD 27 (TARGET BOTTOM HOLE)

LATITUDE = 39°30'48.35" (39.513431)

LONGITUDE = 108°06'24.45" (108.106792)

NAD 83 (SURFACE LOCATION)

LATITUDE = 39°30'52.25" (39.514514)

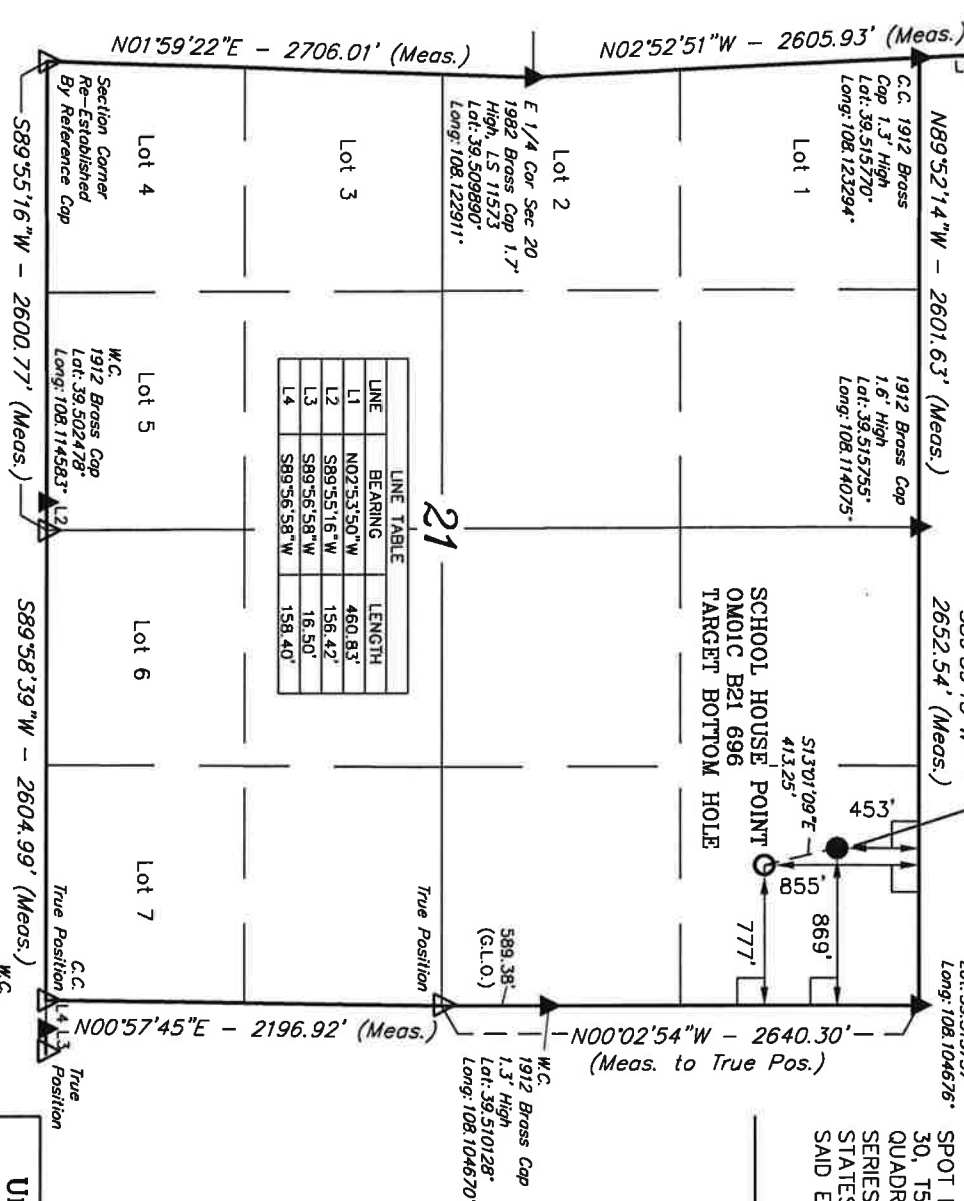
LONGITUDE = 108°06'27.92" (108.107756)

NAD 27 (SURFACE LOCATION)

LATITUDE = 39°30'52.33" (39.514536)

LONGITUDE = 108°06'25.64" (108.107122)

LINE	BEARING	LENGTH
L1	N02°53'50"W	460.83'
L2	S89°55'16"W	156.42'
L3	S89°56'58"W	16.50'
L4	S89°56'58"W	158.40'



T6S, R96W, 6th P.M.

SCHOOL HOUSE POINT OM02C B21 696
Elev. Ungraded Ground = 8298'
Elev. Graded Ground = 8288'

Well location, SCHOOL HOUSE POINT OM02C B21 696, located as shown in the NE 1/4 NE 1/4 of Section 21, T6S, R96W, 6th P.M., Garfield County, Colorado.

BERRY PETROLEUM COMPANY

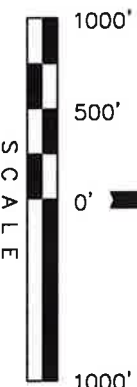
BASIS OF ELEVATION

SPOT ELEVATION AT THE NORTHWEST CORNER OF SECTION 30, T5S, R95W, 6th P.M. TAKEN FROM THE FORKED GULCH QUADRANGLE, COLORADO, GARFIELD COUNTY, 7.5 MINUTE SERIES (TOPOGRAPHICAL MAP) PUBLISHED BY THE UNITED STATES DEPARTMENT OF THE INTERIOR, GEOLOGICAL SURVEY. SAID ELEVATION IS MARKED AS BEING 5966 FEET.

BASIS OF BEARINGS

BASIS OF BEARINGS IS A G.P.S. OBSERVATION.

Sheet 1d of 12



SCALE

CERTIFICATE

THIS IS TO CERTIFY THAT THE ABOVE PART WAS PREPARED AND LOCATION AS SHOWN WAS STAKED ON THE GROUND BY THE FIELD NOTES OF ACTUAL SURVEYS MADE BY ME OR UNDER MY SUPERVISION AND THAT THE SAME ARE TRUE AND CORRECT TO THE BEST OF MY KNOWLEDGE AND BELIEF.

REGISTERED LAND SURVEYOR
REGISTRATION NO. 12923
STATE OF COLORADO
09/01/12

UNITAH ENGINEERING & LAND SURVEYING

85 SOUTH 200 EAST - VERNAL, UTAH 84078

(435) 789-1017

SCALE

1" = 1000'

DATE SURVEYED:

02-07-12

DATE DRAWN:

02-28-12

PARTY

B.J. T.M. D.R.B.

REFERENCES

G.L.O. PLAT

WEATHER

COLD

FILE

BERRY PETROLEUM COMPANY

LEGEND:

— = 90° SYMBOL

● = PROPOSED WELL HEAD.

▲ = SECTION CORNERS LOCATED.

△ = SECTION CORNERS RE-EST.

(Not Set on Ground)

NOTE:
SEE ADDENDUM PLAT FOR EXISTING
IMPROVEMENTS WITHIN 400' OF THE
PROPOSED WELL DISTURBANCE.

PDOP = 1.2

W.C. 1912 Brass Cap
1.0' High
Lot: 39.502482°
Long: 108.104239°

W.C. 1912 Brass Cap
1.0' High
Lot: 39.502482°
Long: 108.104239°

W.C. 1912 Brass Cap
1.0' High
Lot: 39.502482°
Long: 108.104239°

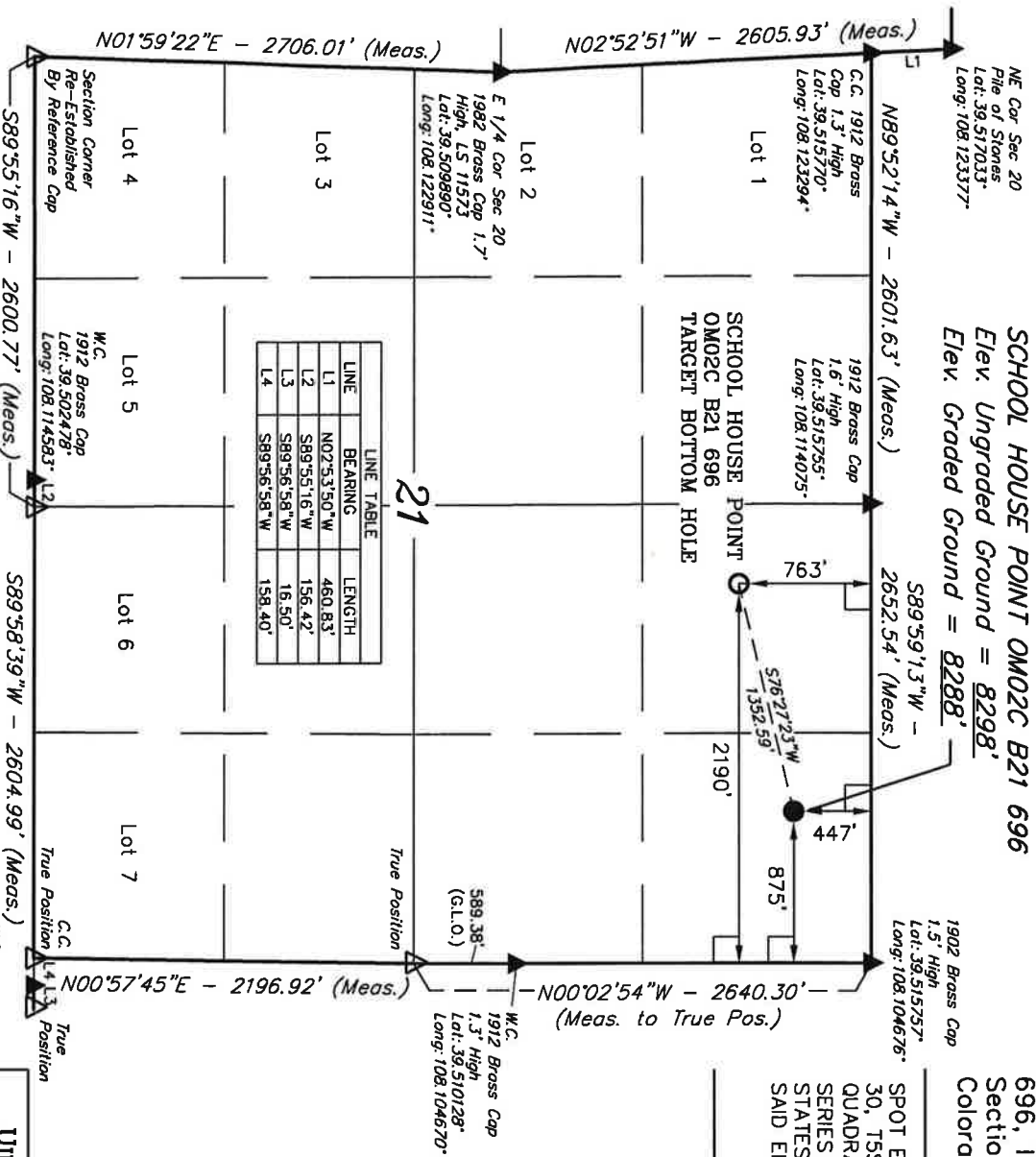
W.C. 1912 Brass Cap
1.0' High
Lot: 39.502482°
Long: 108.104239°

W.C. 1912 Brass Cap
1.0' High
Lot: 39.502482°
Long: 108.104239°

W.C. 1912 Brass Cap
1.0' High
Lot: 39.502482°
Long: 108.104239°

LINE	BEARING	LENGTH
L1	N02°53'50"W	460.83'
L2	S89°55'16"W	156.42'
L3	S89°56'58"W	16.50'
L4	S89°56'58"W	158.40'

21



T6S, R96W, 6th P.M.

SCHOOL HOUSE POINT OM02D B21 696
Elev. Ungraded Ground = 8296'
Elev. Graded Ground = 8288'

BERRY PETROLEUM COMPANY
Well location, SCHOOL HOUSE POINT OM02D B21 696, located as shown in the NE 1/4 NE 1/4 of Section 21, T6S, R96W, 6th P.M., Garfield County, Colorado.

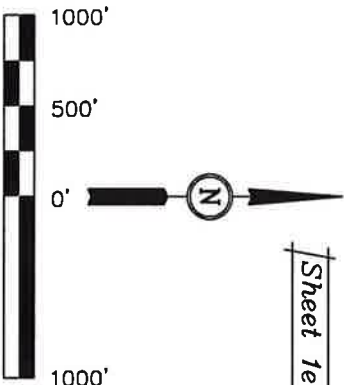
BASIS OF ELEVATION

SPOT ELEVATION AT THE NORTHWEST CORNER OF SECTION 30, T5S, R95W, 6th P.M. TAKEN FROM THE FORKED GULCH QUADRANGLE, COLORADO, GARFIELD COUNTY, 7.5 MINUTE SERIES (TOPOGRAPHICAL MAP) PUBLISHED BY THE UNITED STATES DEPARTMENT OF THE INTERIOR, GEOLOGICAL SURVEY. SAID ELEVATION IS MARKED AS BEING 5966 FEET.

BASIS OF BEARINGS

BASIS OF BEARINGS IS A G.P.S. OBSERVATION.

Sheet 1e of 12

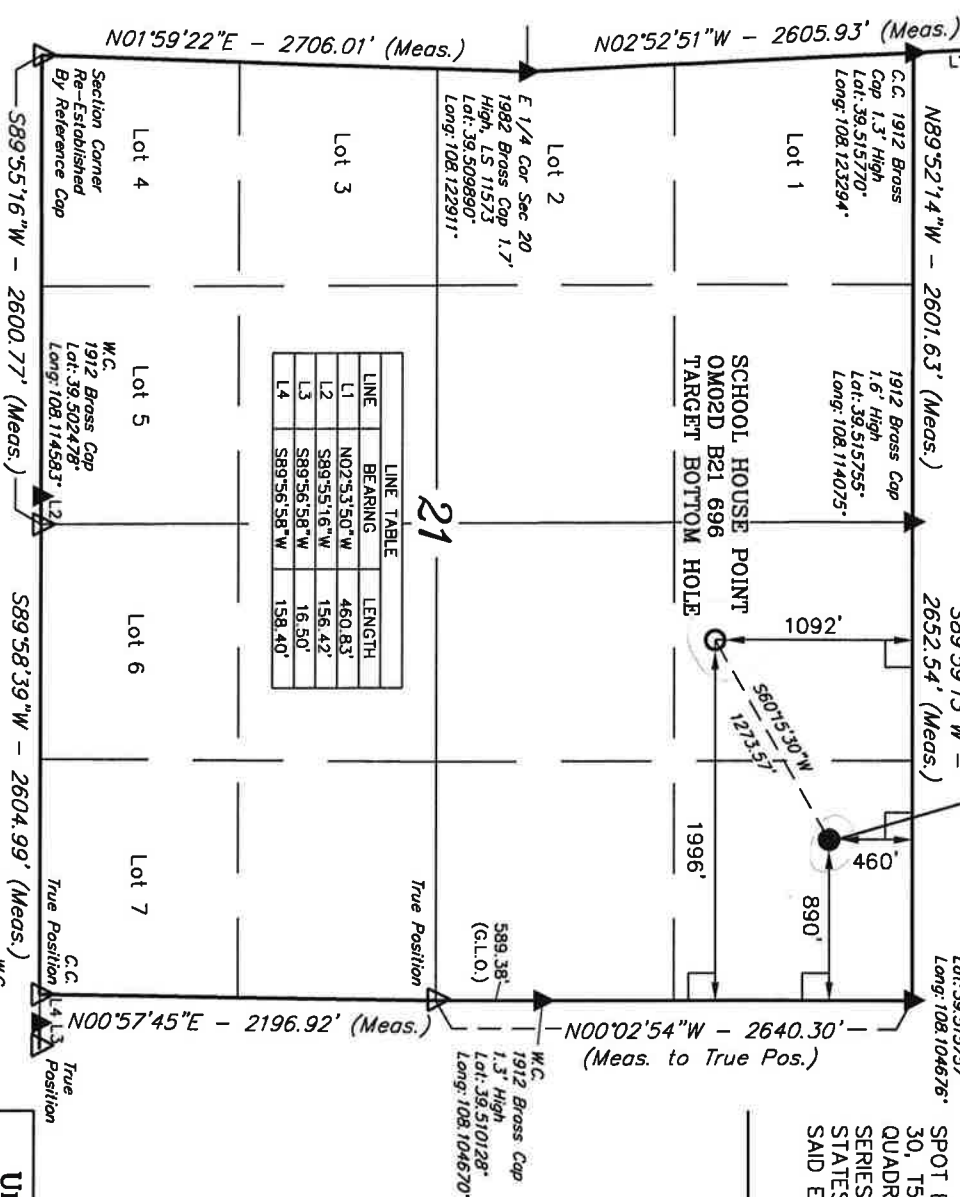


CERTIFICATE

THIS IS TO CERTIFY THAT THE ABOVE PLAT WAS PREPARED AND LOCATED AS SHOWN WAS STAKED ON THE GROUND IN THE FIELD NOTES OF ACTUAL SURVEYS MADE BY ME OR UNDER MY CLOSE SUPERVISION AND THAT THE SAME ARE TRUE AND CORRECT TO THE BEST OF MY KNOWLEDGE AND BELIEF.

REGISTERED AND EXPIRING
REGISTRATION NUMBER 123456
STATE OF COLORADO
DATE 02-07-12

LINE	BEARING	LENGTH
L1	N02°53'50"W	460.83'
L2	S89°55'16"W	156.42'
L3	S89°56'58"W	16.50'
L4	S89°56'58"W	158.40'



LEGEND:

— = 90° SYMBOL

● = PROPOSED WELL HEAD.

▲ = SECTION CORNERS LOCATED.

△ = SECTION CORNERS RE-EST.

(Not Set on Ground)

NOTE:
SEE ADDENDUM PLAT FOR EXISTING
IMPROVEMENTS WITHIN 400' OF THE
PROPOSED WELL DISTURBANCE.

PDOP = 1.2

UINTAH ENGINEERING & LAND SURVEYING
85 SOUTH 200 EAST - VERNAL, UTAH 84078
(435) 789-1017

SCALE: 1" = 1000'

PARTY: B.J. T.M. D.R.B.

REFERENCES: G.L.O. PLAT

WEATHER: COLD

FILE: BERRY PETROLEUM COMPANY

T6S, R96W, 6th P.M.

BERRY PETROLEUM COMPANY

NE Cor Sec 20
Pile of Stones
Lat: 39.517033°
Long: 108.123377°

N89°52'14"W - 2601.63' (Meas.)

S89°59'13"W - 2652.54' (Meas.)

C.C. 1912 Brass
Cap 1.3" High
Lat: 39.51575°
Long: 108.123294°

1912 Brass Cap
1.6" High
Lat: 39.51575°
Long: 108.114075°

Lot 1

SCHOOL HOUSE POINT OM08D B21 696
Elev. Ungraded Ground = 8292'
Elev. Graded Ground = 8288'

N02°52'51"W - 2605.93' (Meas.)

Lot 2

E 1/4 Cor Sec 20
1982 Brass Cap 1.7"
High, L.S. 11573
Lat: 39.509890°
Long: 108.122911°

Lot 3

LINE	BEARING	LENGTH
L1	N02°53'50"W	460.83'
L2	S89°55'16"W	156.42'
L3	S89°56'58"W	16.50'
L4	S89°56'58"W	158.40'

N01°59'22"E - 2706.01' (Meas.)

Section Corner
Re-Established
By Reference Cap

S89°55'16"W - 2600.77' (Meas.)

W.C.
1912 Brass Cap
Lat: 39.502478°
Long: 108.114583°

S89°58'39"W - 2604.99' (Meas.)

W.C.
1912 Brass Cap
1.0" High
Lat: 39.502482°
Long: 108.104239°

N00°57'45"E - 2196.92' (Meas.)

N00°02'54"W - 2640.30' (Meas. to True Pos.)

W.C.
1912 Brass Cap
1.3" High
Lat: 39.510128°
Long: 108.104670°

21

SCHOOL HOUSE POINT
OM08D B21 696
TARGET BOTTOM HOLE
485'

True Position

True Position

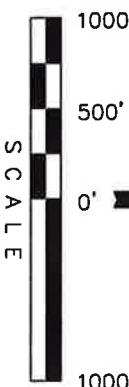
BASIS OF BEARINGS IS A G.P.S. OBSERVATION.

BASIS OF BEARINGS

SPOT ELEVATION AT THE NORTHWEST CORNER OF SECTION 30, T5S, R95W, 6th P.M. TAKEN FROM THE FORKED GULCH QUADRANGLE, COLORADO, GARFIELD COUNTY, 7.5 MINUTE SERIES (TOPOGRAPHICAL MAP) PUBLISHED BY THE UNITED STATES DEPARTMENT OF THE INTERIOR, GEOLOGICAL SURVEY. SAID ELEVATION IS MARKED AS BEING 5966 FEET.

BASIS OF ELEVATION

Well location, SCHOOL HOUSE POINT OM08D B21 696, located as shown in the NE 1/4 NE 1/4 of Section 21, T6S, R96W, 6th P.M., Garfield County, Colorado.



SCALE



Sheet 1 of 12

CERTIFICATE
THIS IS TO CERTIFY THAT THE ABOVE PLAT WAS PREPARED AND
LOCATION AS SHOWN WAS STAKED ON THE GROUND BY THE SURVEYOR
NOTES OF ACTUAL SURVEYS MADE BY ME OR UNDER MY
SUPERVISION AND THAT THE SAME ARE TRUE AND CORRECT TO
THE BEST OF MY KNOWLEDGE AND BELIEF

REGISTERED LAND SURVEYOR
REGISTRATION NO. 12345
STATE OF COLORADO
03-01-12

UINTAH ENGINEERING & LAND SURVEYING
85 SOUTH 200 EAST - VERNAL, UTAH 84078
(435) 789-1017

DATE SURVEYED: 02-07-12

DATE DRAWN: 02-28-12

SCALE 1" = 1000'

PARTY B.J. T.M. D.R.B. REFERENCES G.L.O. PLAT

WEATHER COLD FILE BERRY PETROLEUM COMPANY

LEGEND:

90° SYMBOL

PROPOSED WELL HEAD.

SECTION CORNERS LOCATED.

SECTION CORNERS RE-EST.

(Not Set on Ground)

NOTE:
SEE ADDENDUM PLAT FOR EXISTING
IMPROVEMENTS WITHIN 400' OF THE
PROPOSED WELL DISTURBANCE.

NAD 83 (TARGET BOTTOM HOLE)

Latitude = 39°30'33.22" (39.509228)

Longitude = 108°06'23.00" (108.106389)

NAD 83 (SURFACE LOCATION)

Latitude = 39°30'52.12" (39.514478)

Longitude = 108°06'28.11" (108.107808)

PDOP = 1.2

NAD 27 (TARGET BOTTOM HOLE)

Latitude = 39°30'33.30" (39.509250)

Longitude = 108°06'20.72" (108.105756)

NAD 27 (SURFACE LOCATION)

Latitude = 39°30'52.20" (39.514500)

Longitude = 108°06'25.83" (108.107175)

BERRY PETROLEUM COMPANY

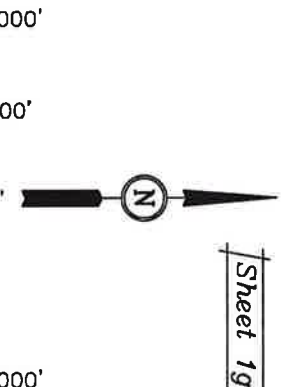
Well location, SCHOOL HOUSE POINT OM08C B21 696, located as shown in the NE 1/4 NE 1/4 of Section 21, T6S, R96W, 6th P.M., Garfield County, Colorado.

BASIS OF ELEVATION

SPOT ELEVATION AT THE NORTHWEST CORNER OF SECTION 30, T5S, R95W, 6th P.M. TAKEN FROM THE FORKED GULCH QUADRANGLE, COLORADO, GARFIELD COUNTY, 7.5 MINUTE SERIES (TOPOGRAPHICAL MAP) PUBLISHED BY THE UNITED STATES DEPARTMENT OF THE INTERIOR, GEOLOGICAL SURVEY. SAID ELEVATION IS MARKED AS BEING 5966 FEET.

BASIS OF BEARINGS

BASIS OF BEARINGS IS A G.P.S. OBSERVATION.



Sheet 1g of 12

LINE TABLE		
LINE	BEARING	LENGTH
L1	N02°53'50"W	460.83'
L2	S89°55'16"W	156.42'
L3	S89°56'58"W	16.50'
L4	S89°56'58"W	158.40'

CERTIFICATE

REGISTERED AND SURVEYOR
REGISTRATION NO. 1592
STATE OF COLORADO

UNTAH ENGINEERING & LAND SURVEYING

85 SOUTH 200 EAST - VERNAL, UTAH 84078

(435) 789-1017

LE

DATE SURVEYED:

RAWN:

B.J. T.M. D.R.B.

REFERENCES

D.O.

THEIR

FILE	U.C.V. FLA
------	------------

SPOT 1
30, T5
QUADR
SERIES
STATES
SAID E

LEGEND:

1 = 90° SYMBOL

● = PROPOSED WELL HEAD.

▲ = SECTION CORNERS LOCATED.

Δ = SECTION CORNERS RE-EST.

(Not Set on Ground)

NOTE:

NOTE: SEE ADDENDUM PLAT FOR EXISTING IMPROVEMENTS WITHIN 400' OF THE PROPOSED WELL DISTURBANCE.

PDOP = 1.3

(TIN)

07- (39.514464)
19- (108.107831)

DATE: 30/01/2025

91" (108.107197)

T6S, R96W, 6th P.M.

SCHOOL HOUSE POINT OM07A B21 696
Elev. Ungraded Ground = 8296'
Elev. Graded Ground = 8288'

BERRY PETROLEUM COMPANY

Well location, SCHOOL HOUSE POINT OM07A B21 696, located as shown in the NE 1/4 NE 1/4 of Section 21, T6S, R96W, 6th P.M., Garfield County, Colorado.

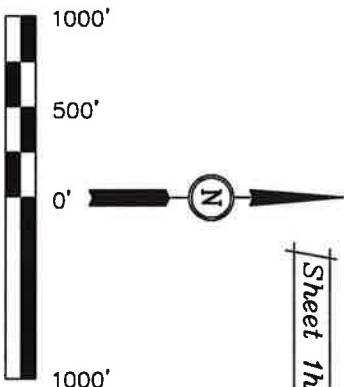
BASIS OF ELEVATION

SPOT ELEVATION AT THE NORTHWEST CORNER OF SECTION 30, T5S, R95W, 6th P.M. TAKEN FROM THE FORKED GULCH QUADRANGLE, COLORADO, GARFIELD COUNTY, 7.5 MINUTE SERIES (TOPOGRAPHICAL MAP) PUBLISHED BY THE UNITED STATES DEPARTMENT OF THE INTERIOR, GEOLOGICAL SURVEY. SAID ELEVATION IS MARKED AS BEING 5966 FEET.

BASIS OF BEARINGS

BASIS OF BEARINGS IS A G.P.S. OBSERVATION.

Sheet 1h of 12



CERTIFICATE

THIS IS TO CERTIFY THAT THE ABOVE PLAT WAS RESEARCHED AND LOCATION AS SHOWN WAS STAKED ON THE GROUND BY THE SURVEYOR. NOTES OF ACTUAL SURVEYS MADE BY ME OR UNDER MY SUPERVISION AND THAT THE SAME ARE TRUE AND CORRECT TO THE BEST OF MY KNOWLEDGE AND BELIEF.

REGISTERED AND SHAW FOR REGISTRATION (10/12/2012) STATE OF COLORADO 03-01412

UINTAH ENGINEERING & LAND SURVEYING

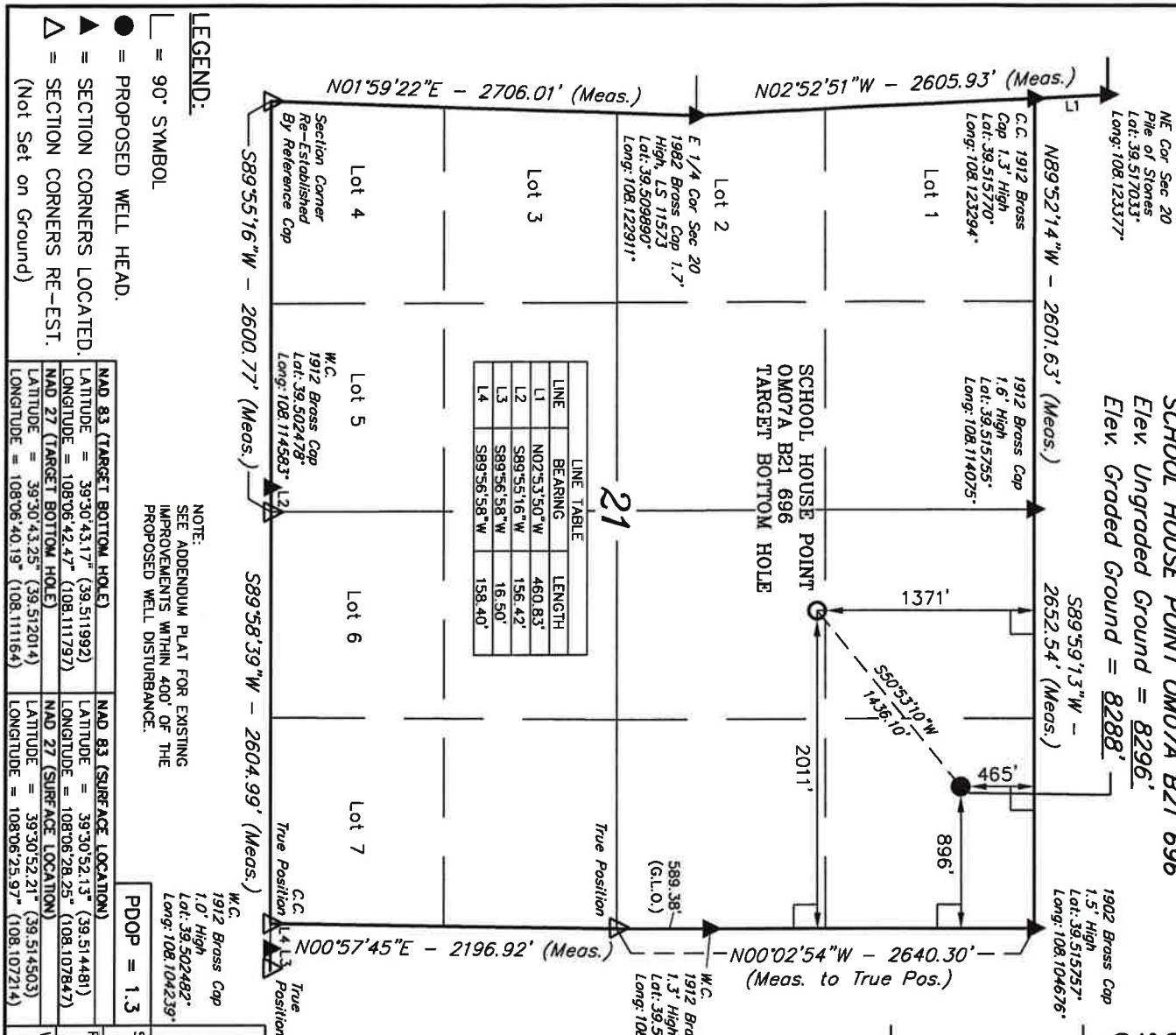
85 SOUTH 200 EAST - VERNAL, UTAH 84078

(435) 789-1017

SCALE 1" = 1000' DATE SURVEYED: 02-07-12 DATE DRAWN: 02-28-12

PARTY B.J. T.M. D.R.B. REFERENCES G.L.O. PLAT

WEATHER COLD FILE BERRY PETROLEUM COMPANY



LINE	BEARING	LENGTH
L1	N02°53'50"W	460.83'
L2	S89°55'16"W	156.42'
L3	S89°56'58"W	16.50'
L4	S89°56'58"W	158.40'

LEGEND:

└ = 90° SYMBOL

● = PROPOSED WELL HEAD.

▲ = SECTION CORNERS LOCATED.

△ = SECTION CORNERS RE-EST.

(Not Set on Ground)

NOTE:
SEE ADDENDUM PLAT FOR EXISTING IMPROVEMENTS WITHIN 400' OF THE PROPOSED WELL DISTURBANCE.

PDOP = 1.3

NAD 83 (TARGET BOTTOM HOLE)	NAD 83 (SURFACE LOCATION)
LATITUDE = 39°30'43.17" (39.511992)	LATITUDE = 39°30'52.13" (39.514481)
LONGITUDE = 108°06'42.47" (108.111797)	LONGITUDE = 108°06'28.25" (108.107847)
NAD 27 (TARGET BOTTOM HOLE)	NAD 27 (SURFACE LOCATION)
LATITUDE = 39°30'43.25" (39.512014)	LATITUDE = 39°30'52.21" (39.514503)
LONGITUDE = 108°06'40.19" (108.111164)	LONGITUDE = 108°06'25.97" (108.107214)

T6S, R96W, 6th P.M.

SCHOOL HOUSE POINT OM07C B21 696
Elev. Ungraded Ground = 8295'
Elev. Graded Ground = 8288'

BERRY PETROLEUM COMPANY

Well location, SCHOOL HOUSE POINT OM07C B21 696, located as shown in the NE 1/4 NE 1/4 of Section 21, T6S, R96W, 6th P.M., Garfield County, Colorado.

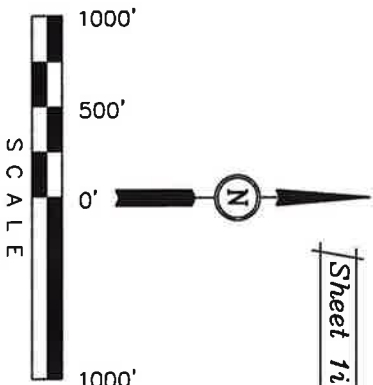
BASIS OF ELEVATION

SPOT ELEVATION AT THE NORTHWEST CORNER OF SECTION 30, T5S, R95W, 6th P.M. TAKEN FROM THE FORKED GUICH QUADRANGLE, COLORADO, GARFIELD COUNTY, 7.5 MINUTE SERIES (TOPOGRAPHICAL MAP) PUBLISHED BY THE UNITED STATES DEPARTMENT OF THE INTERIOR, GEOLOGICAL SURVEY. SAID ELEVATION IS MARKED AS BEING 5966 FEET.

BASIS OF BEARINGS

BASIS OF BEARINGS IS A G.P.S. OBSERVATION.

Sheet 11 of 12



CERTIFICATE

THIS IS TO CERTIFY THAT THE ABOVE PLAT WAS PREPARED AND LOCATION AS SHOWN WAS STAKED ON THE SURVEYED FIELD NOTES OF ACTUAL SURVEYS MADE BY ME OR UNDER MY SUPERVISION AND THAT THE SAME ARE TRUE AND CORRECT THE BEST OF MY KNOWLEDGE AND BELIEF.

REGISTERED LAND SURVEYOR
REGISTRATION NO. 12345
STATE OF COLORADO
02-07-12

UINTAH ENGINEERING & LAND SURVEYING

85 SOUTH 200 EAST - VERNAL, UTAH 84078

(435) 789-1017

SCALE 1" = 1000'

DATE SURVEYED: 02-07-12

DATE DRAWN: 02-28-12

PARTY

B.J. T.M. D.R.B.

REFERENCES

G.L.O. PLAT

WEATHER

COLD

FILE BERRY PETROLEUM COMPANY

LEGEND:

— = 90° SYMBOL

● = PROPOSED WELL HEAD.

▲ = SECTION CORNERS LOCATED.

△ = SECTION CORNERS RE-EST.

(Not Set on Ground)

NOTE:
SEE ADDENDUM PLAT FOR EXISTING
IMPROVEMENTS WITHIN 400' OF THE
PROPOSED WELL DISTURBANCE.

PDOP = 1.3

W.C.
1912 Brass Cap
1.0' High
Lat: 39.502482°
Long: 108.104239°

NAD 83 (TARGET BOTTOM HOLE)

LATITUDE = 39.303702° (39.510283)

LONGITUDE = 108.064509° (108.112525)

NAD 27 (TARGET BOTTOM HOLE)

LATITUDE = 39.303710° (39.510306)

LONGITUDE = 108.064281° (108.111892)

NAD 83 (SURFACE LOCATION)

LATITUDE = 39.305200° (39.514444)

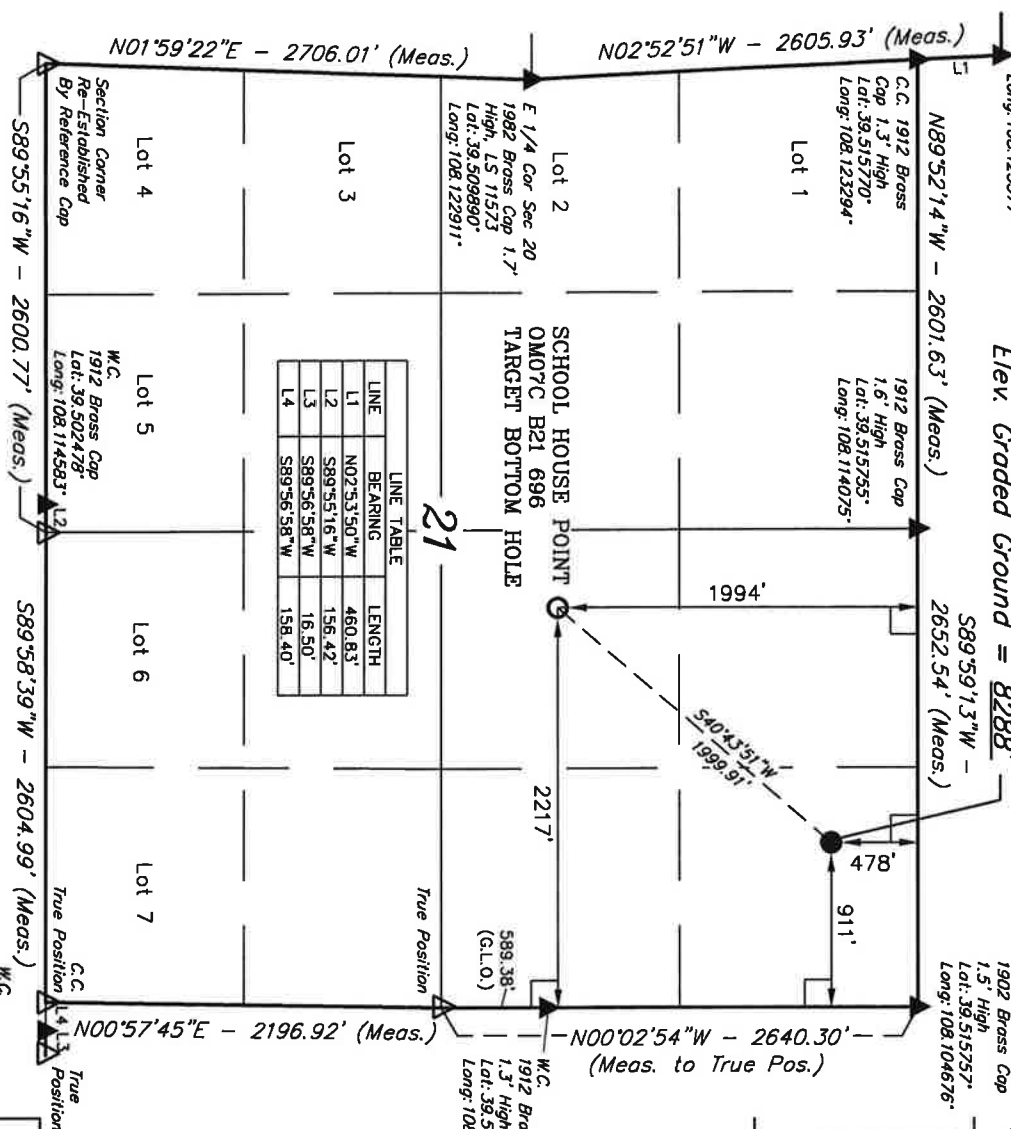
LONGITUDE = 108.062845° (108.107903)

NAD 27 (SURFACE LOCATION)

LATITUDE = 39.305208° (39.514467)

LONGITUDE = 108.062617° (108.107269)

LINE	BEARING	LENGTH
L1	N02°53'50"W	460.83'
L2	S89°55'16"W	156.42'
L3	S89°56'58"W	16.50'
L4	S89°56'58"W	158.40'



T6S, R96W, 6th P.M.

SCHOOL HOUSE POINT OM08B B21 696
Elev. Ungraded Ground = 8296'
Elev. Graded Ground = 8288'

BERRY PETROLEUM COMPANY
Well location, SCHOOL HOUSE POINT OM08B B21 696, located as shown in the NE 1/4 NE 1/4 of Section 21, T6S, R96W, 6th P.M., Garfield County, Colorado.

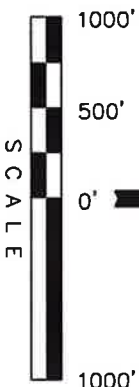
BASIS OF ELEVATION

SPOT ELEVATION AT THE NORTHWEST CORNER OF SECTION 30, T5S, R95W, 6th P.M. TAKEN FROM THE FORKED GULCH QUADRANGLE, COLORADO, GARFIELD COUNTY, 7.5 MINUTE SERIES (TOPOGRAPHICAL MAP) PUBLISHED BY THE UNITED STATES DEPARTMENT OF THE INTERIOR, GEOLOGICAL SURVEY. SAID ELEVATION IS MARKED AS BEING 5966 FEET.

BASIS OF BEARINGS

BASIS OF BEARINGS IS A G.P.S. OBSERVATION.

Sheet 1j of 12



CERTIFICATE

THIS IS TO CERTIFY THAT THE ABOVE PLAT WAS PREPARED AND LOCATION AS SHOWN WAS STAKED ON THE SOUTHWEST CORNER OF SECTION 21, T6S, R96W, 6th P.M., GARFIELD COUNTY, COLORADO, BY ME OF AND UNDER MY SUPERVISION AND THAT THE SAME ARE TRUE AND CORRECT THE BEST OF MY KNOWLEDGE AND BELIEF.

REGISTERED LAND SURVEYOR
REGISTRATION NO. 19920
STATE OF COLORADO
03-01-12

UINTAH ENGINEERING & LAND SURVEYING

85 SOUTH 200 EAST - VERNAL, UTAH 84078

(436) 789-1017

SCALE 1" = 1000'

DATE SURVEYED: 02-07-12 DATE DRAWN: 02-28-12

PARTY B.J. T.M. D.R.B.

REFERENCES G.L.O. PLAT

WEATHER COLD

FILE BERRY PETROLEUM COMPANY

LEGEND:

└ = 90° SYMBOL

● = PROPOSED WELL HEAD.

▲ = SECTION CORNERS LOCATED.

△ = SECTION CORNERS RE-EST.

(Not Set on Ground)

NOTE:
SEE ADDENDUM PLAT FOR EXISTING IMPROVEMENTS WITHIN 400' OF THE PROPOSED WELL DISTURBANCE.

PDOP = 1.3

W.C. 1912 Brass Cap
1.0' High
Lot: 39.502482
Long: 108.104239

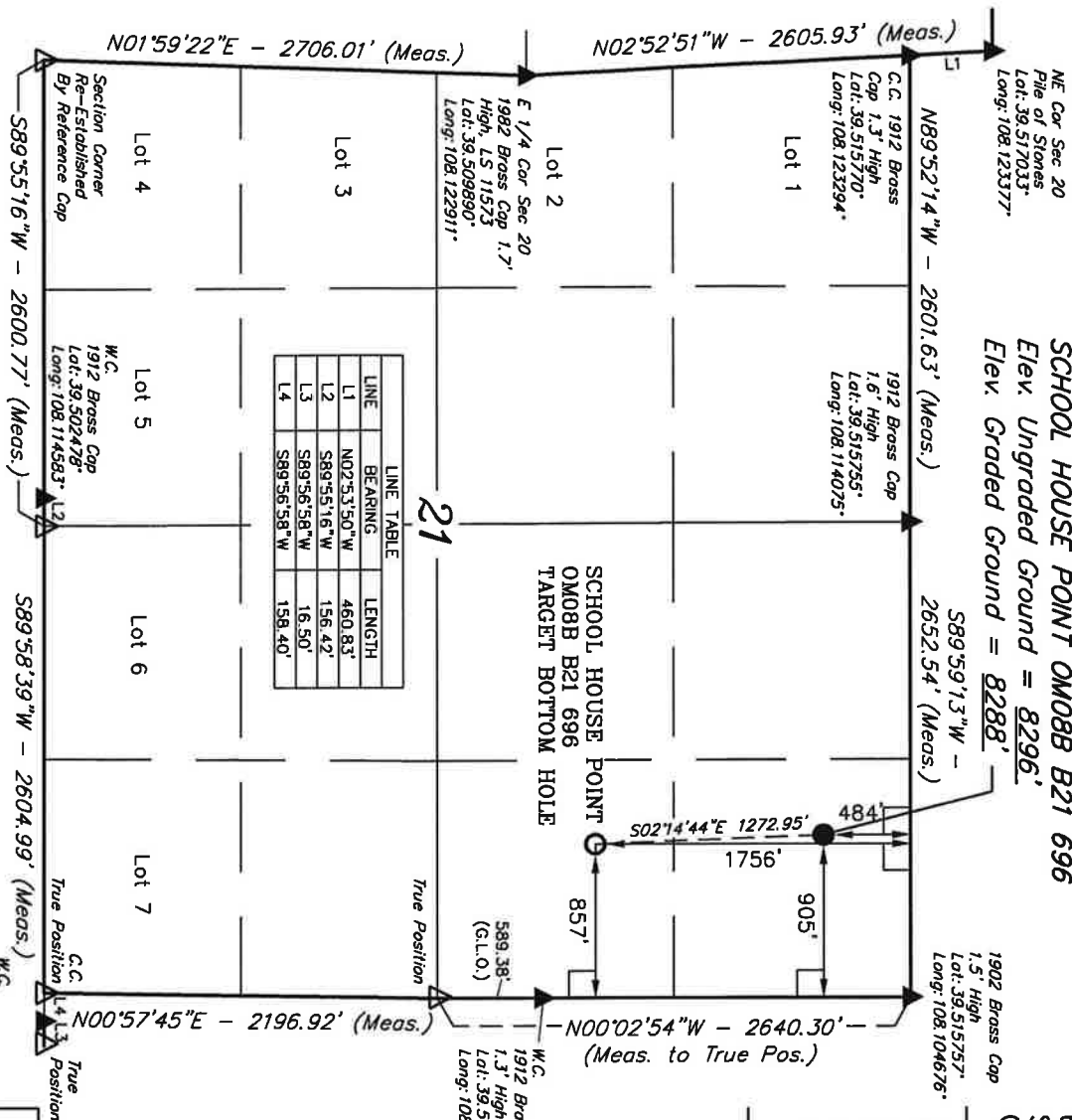
NAD 83 (TARGET BOTTOM HOLE)
LATITUDE = 39°30'39.37" (39.510936)
LONGITUDE = 108°08'27.74" (108.107706)

NAD 27 (TARGET BOTTOM HOLE)
LATITUDE = 39°30'39.45" (39.510958)
LONGITUDE = 108°06'25.46" (108.107072)

NAD 83 (SURFACE LOCATION)
LATITUDE = 39°30'51.94" (39.514428)
LONGITUDE = 108°08'28.38" (108.107883)

NAD 27 (SURFACE LOCATION)
LATITUDE = 39°30'52.02" (39.514450)
LONGITUDE = 108°06'26.10" (108.107250)

LINE	BEARING	LENGTH
L1	N02°53'50"W	460.83'
L2	S89°55'16"W	156.42'
L3	S89°56'58"W	16.50'
L4	S89°56'58"W	158.40'



T6S, R96W, 6th P.M.

SCHOOL HOUSE POINT OM07D B21 696
Elev. Ungraded Ground = 8296'
Elev. Graded Ground = 8288'

BERRY PETROLEUM COMPANY

Well location, SCHOOL HOUSE POINT OM07D B21 696, located as shown in the NE 1/4 NE 1/4 of Section 21, T6S, R96W, 6th P.M., Garfield County, Colorado.

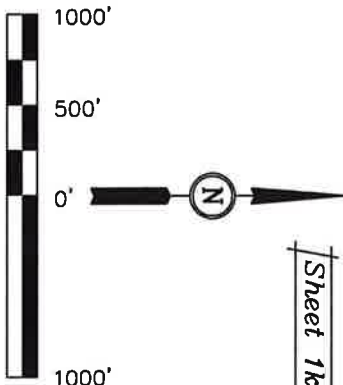
BASIS OF ELEVATION

SPOT ELEVATION AT THE NORTHWEST CORNER OF SECTION 30, T5S, R95W, 6th P.M. TAKEN FROM THE FORKED GULCH QUADRANGLE, COLORADO, GARFIELD COUNTY, 7.5 MINUTE SERIES (TOPOGRAPHICAL MAP) PUBLISHED BY THE UNITED STATES DEPARTMENT OF THE INTERIOR, GEOLOGICAL SURVEY. SAID ELEVATION IS MARKED AS BEING 5966 FEET.

BASIS OF BEARINGS

BASIS OF BEARINGS IS A G.P.S. OBSERVATION.

Sheet 1k of 12



CERTIFICATE

THIS IS TO CERTIFY THAT THE ABOVE PLAT WAS PREPARED AND LOCATION AS SHOWN WAS STAKED ON THE GROUND IN THE FIELD NOTES OF ACTUAL SURVEY MADE BY ME OR UNDER MY CLOSE SUPERVISION AND THAT THE SAME ARE TRUE AND CORRECT TO THE BEST OF MY KNOWLEDGE AND BELIEF.

REGISTERED AND SURVEYOR
REGISTRATION NO. 12345
STATE OF COLORADO
02-01-12

JUNTAH ENGINEERING & LAND SURVEYING

86 SOUTH 200 EAST - VERNAL, UTAH 84078

(435) 789-1017

SCALE 1" = 1000' DATE SURVEYED: 02-07-12 DATE DRAWN: 02-28-12

PARTY B.J. T.M. D.R.B. REFERENCES G.L.O. PLAT

WETTER COLD FILE BERRY PETROLEUM COMPANY

LEGEND:

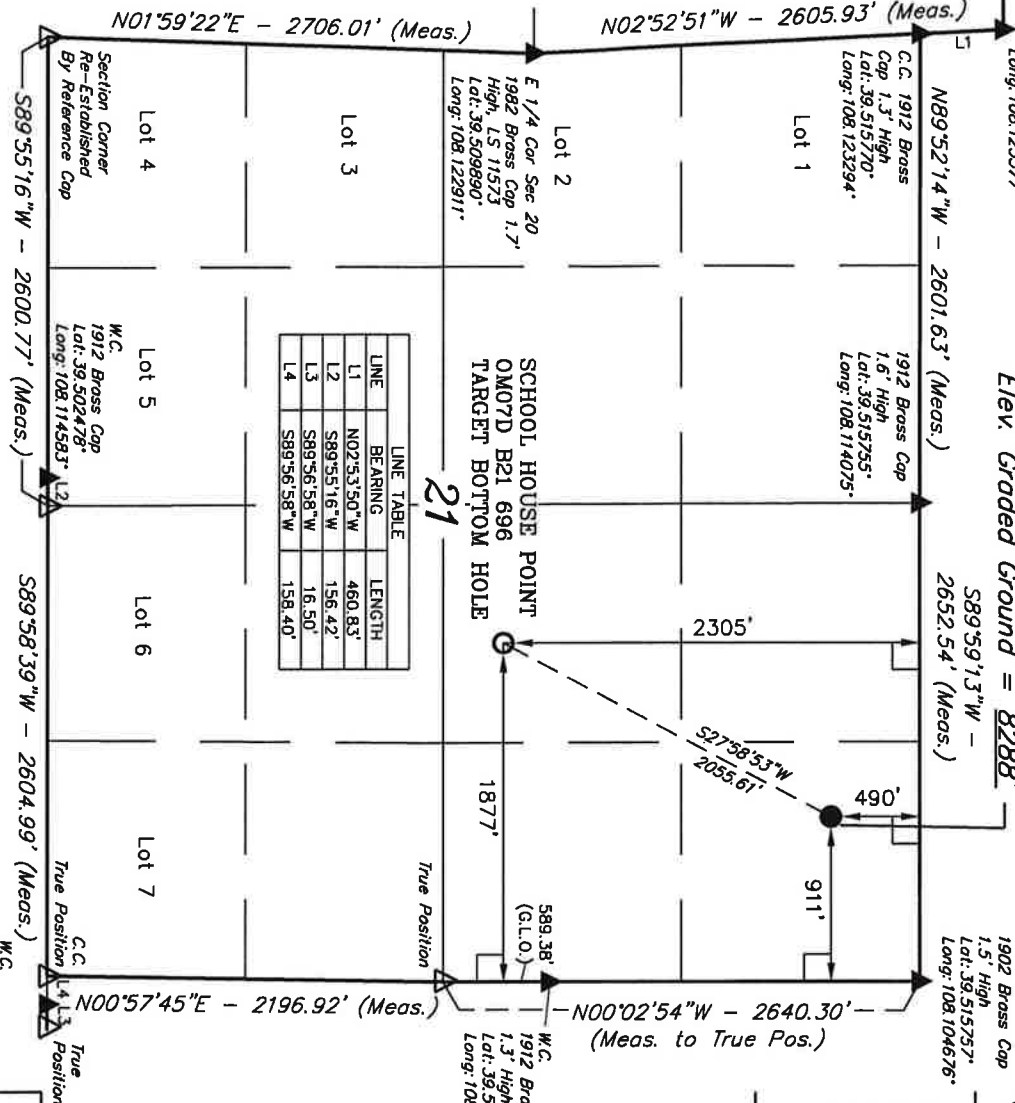
- 90° SYMBOL
- PROPOSED WELL HEAD.
- SECTION CORNERS LOCATED.
- SECTION CORNERS RE-EST.
- (Not Set on Ground)

NOTE:
SEE ADDENDUM PLAT FOR EXISTING
IMPROVEMENTS WITHIN 400' OF THE
PROPOSED WELL DISTURBANCE.

PDOP = 1.3

NAD 83 (TARGET BOTTOM HOLE)	NAD 83 (SURFACE LOCATION)
LATITUDE = 39°30'33.95" (39.509431)	LATITUDE = 39°30'51.88" (39.514411)
LONGITUDE = 108°06'40.76" (108.111322)	LONGITUDE = 108°06'28.46" (108.107906)
NAD 27 (TARGET BOTTOM HOLE)	NAD 27 (SURFACE LOCATION)
LATITUDE = 39°30'34.03" (39.509453)	LATITUDE = 39°30'51.96" (39.514433)
LONGITUDE = 108°06'38.48" (108.110689)	LONGITUDE = 108°06'26.18" (108.107222)

LINE	BEARING	LENGTH
L1	N02°53'50"W	460.83'
L2	S89°55'16"W	156.42'
L3	S89°56'58"W	16.50'
L4	S89°56'58"W	158.40'



T6S, R96W, 6th P.M.

SCHOOL HOUSE POINT OM07B B21 696

Elev. Ungraded Ground = 8295'

Elev. Graded Ground = 8288'

BERRY PETROLEUM COMPANY

Well location, SCHOOL HOUSE POINT OM07B B21 696, located as shown in the NE 1/4 NE 1/4 of Section 21, T6S, R96W, 6th P.M., Garfield County, Colorado.

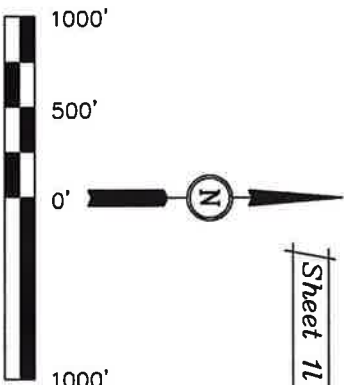
BASIS OF ELEVATION

SPOT ELEVATION AT THE NORTHWEST CORNER OF SECTION 30, T5S, R95W, 6th P.M. TAKEN FROM THE FORKED GULCH QUADRANGLE, COLORADO, GARFIELD COUNTY, 7.5 MINUTE SERIES (TOPOGRAPHICAL MAP) PUBLISHED BY THE UNITED STATES DEPARTMENT OF THE INTERIOR, GEOLOGICAL SURVEY. SAID ELEVATION IS MARKED AS BEING 5966 FEET.

BASIS OF BEARINGS

BASIS OF BEARINGS IS A G.P.S. OBSERVATION.

Sheet 11 of 12



CERTIFICATE

THIS IS TO CERTIFY THAT THE ABOVE PLAT WAS PREPARED AND LOCATION AS SHOWN WAS STAKED ON THE GROUND IN FIELD NOTES OF ACTUAL SURVEYS MADE BY ME OR UNDER MY CLOSE SUPERVISION AND THAT THE SAME ARE TRUE AND CORRECT TO THE BEST OF MY KNOWLEDGE AND BELIEF.

REGISTERED LAND SURVEYOR
REGISTRATION NO. 104239
STATE OF COLORADO
DATE OF REG. 03-01-12

UTAH ENGINEERING & LAND SURVEYING

85 SOUTH 200 EAST - VERNAL, UTAH 84078

(435) 789-1017

SCALE 1" = 1000'

PARTY B.J. T.M. D.R.B.

WEATHER COLD

LEGEND:

— = 90° SYMBOL

● = PROPOSED WELL HEAD.

▲ = SECTION CORNERS LOCATED.

△ = SECTION CORNERS RE-EST.

(Not Set on Ground)

NOTE:

SEE APPENDIX PLAT FOR EXISTING IMPROVEMENTS WITHIN 400' OF THE PROPOSED WELL DISTURBANCE.

PDOP = 1.3

W.C. 1912 Brass Cap 1.0' High

Lat: 39.502482°

Long: 108.104239°

SCALE

PARTY

WEATHER

DATE SURVEYED:

REFERENCES

FILE

DATE DRAWN:

REFERENCES

FILE

LINE	BEARING	LENGTH
L1	N02°53'50"W	460.83'
L2	S89°55'16"W	156.42'
L3	S89°56'58"W	16.50'
L4	S89°56'58"W	158.40'

