
LARAMIE ENERGY II LLC EBUSINESS

**HAWXHURST 17-05B
WILD CAT
Mesa County , Colorado**

Cement Surface Casing
27-Oct-2011

Post Job Report

The Road to Excellence Starts with Safety

Sold To #: 344919	Ship To #: 2887409	Quote #:	Sales Order #: 9018666
Customer: LARAMIE ENERGY II LLC EBUSINESS	Customer Rep: Clausen, Kelly		
Well Name: HAWXHURST	Well #: 17-05B	API/UWI #: 05-077-10159	
Field: WILD CAT	City (SAP): COLLBRAN	County/Parish: Mesa	State: Colorado
Lat: N 39.279 deg. OR N 39 deg. 16 min. 44.616 secs.	Long: W 107.913 deg. OR W -108 deg. 5 min. 14.532 secs.		
Contractor: Precision Drilling Corp.	Rig/Platform Name/Num: Precision 706		
Job Purpose: Cement Surface Casing			
Well Type: Development Well	Job Type: Cement Surface Casing		
Sales Person: METLI, MARSHALL	Srv Supervisor: KUKUS, CRAIG	MBU ID Emp #: 369124	

Job Personnel

HES Emp Name	Exp Hrs	Emp #	HES Emp Name	Exp Hrs	Emp #	HES Emp Name	Exp Hrs	Emp #
BURKE, BRENDAN Patrick	4	487782	KUKUS, CRAIG A	4	369124	SMITH, DUSTIN Michael	4	418015
WYCKOFF, RYAN Scott	4	476117						

Equipment

HES Unit #	Distance-1 way	HES Unit #	Distance-1 way	HES Unit #	Distance-1 way	HES Unit #	Distance-1 way
10867322	42.5 mile	10871245	42.5 mile	10897891	42.5 mile	11259883	42.5 mile
11360881	42.5 mile						

Job Hours

Date	On Location Hours	Operating Hours	Date	On Location Hours	Operating Hours	Date	On Location Hours	Operating Hours
10/27/11	3	1.5	10/28/11	1				

TOTAL Total is the sum of each column separately

Job

Formation Name	Top	Bottom	Called Out	Date	Time	Time Zone
Formation Depth (MD)			On Location	27 - Oct - 2011	16:00	MST
Form Type	BHST		Job Started	27 - Oct - 2011	20:00	MST
Job depth MD	1550. ft	Job Depth TVD	Job Completed	27 - Oct - 2011	22:03	MST
Water Depth		Wk Ht Above Floor	Departed Loc	27 - Oct - 2011	22:58	MST
Perforation Depth (MD)	From	To		28 - Oct - 2011	01:15	MST

Well Data

Description	New / Used	Max pressure psig	Size in	ID in	Weight lbm/ft	Thread	Grade	Top MD ft	Bottom MD ft	Top TVD ft	Bottom TVD ft
13 1/2" Open Hole				13.5				.	1550.		
9 5/8" Surface Casing	New		9.625	9.001	32.3		H-40	.	1550.		

Sales/Rental/3rd Party (HES)

Description	Qty	Qty uom	Depth	Supplier
PLUG,CMTG,TOP,9 5/8,HWE,8.16 MIN/9.06 MA	1	EA		

Tools and Accessories

Type	Size	Qty	Make	Depth	Type	Size	Qty	Make	Depth	Type	Size	Qty	Make
Guide Shoe					Packer					Top Plug	9 5/8	1	HES
Float Shoe					Bridge Plug					Bottom Plug			
Float Collar					Retainer					SSR plug set			
Insert Float										Plug Container	9 5/8	1	HES
Stage Tool										Centralizers			

Miscellaneous Materials

Gelling Agt	Conc	Surfactant	Conc	Acid Type	Qty	Conc	%
Treatment Fld	Conc	Inhibitor	Conc	Sand Type	Size	Qty	

Fluid Data

Stage/Plug #: 1

Fluid #	Stage Type	Fluid Name	Qty	Qty uom	Mixing Density lbm/gal	Yield ft ³ /sk	Mix Fluid Gal/sk	Rate bbl/min	Total Mix Fluid Gal/sk
1	Fresh Water		20.00	bbl	8.34	.0	.0	4	
2	VersaCem Lead Cement	VERSACEM (TM) SYSTEM (452010)	140.0	sacks	12.3	2.38	13.77	5	13.77
	13.77 Gal	FRESH WATER							
3	SwiftCem Tail Cement	SWIFTCEM (TM) SYSTEM (452990)	180.0	sacks	14.2	1.43	6.85	5	6.85
	6.85 Gal	FRESH WATER							
4	Displacement		117.00	bbl	8.33	.0	.0	9	
Calculated Values		Pressures		Volumes					
Displacement	117	Shut In: Instant		Lost Returns	0	Cement Slurry	105	Pad	
Top Of Cement	SURFACE	5 Min		Cement Returns	37	Actual Displacement	117	Treatment	
Frac Gradient		15 Min		Spacers	20	Load and Breakdown		Total Job	245
Rates									
Circulating	RIG	Mixing	5	Displacement	9	Avg. Job	7		
Cement Left In Pipe	Amount	25.10 ft	Reason	Shoe Joint					
Frac Ring # 1 @	ID	Frac ring # 2 @	ID	Frac Ring # 3 @	ID	Frac Ring # 4 @	ID		
The Information Stated Herein Is Correct				Customer Representative Signature					

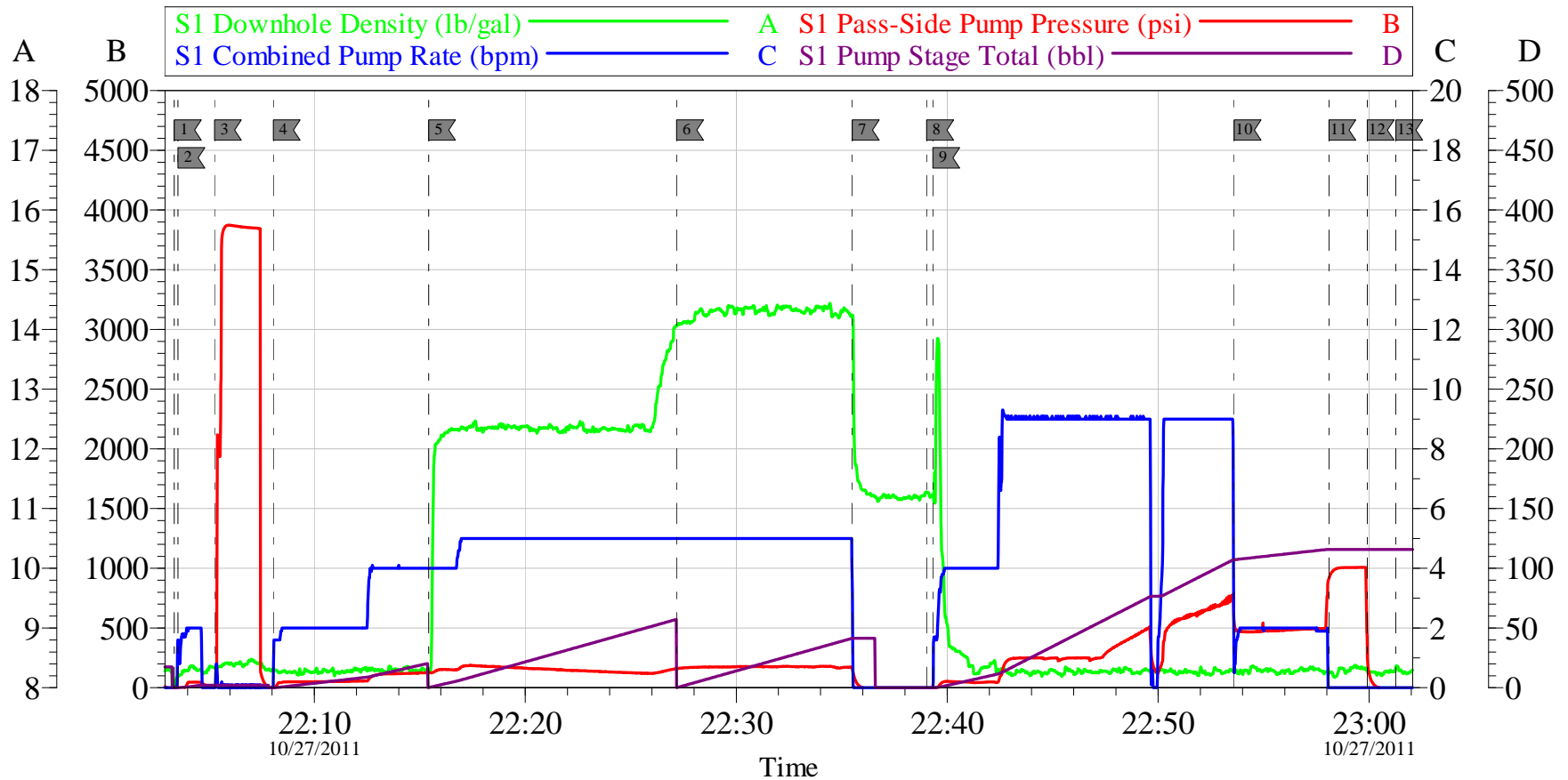
The Road to Excellence Starts with Safety

Sold To #: 344919	Ship To #: 2887409	Quote #:	Sales Order #: 9018666
Customer: LARAMIE ENERGY II LLC EBUSINESS		Customer Rep: Clausen, Kelly	
Well Name: HAWXHURST	Well #: 17-05B	API/UWI #: 05-077-10159	
Field: WILD CAT	City (SAP): COLLBRAN	County/Parish: Mesa	State: Colorado
Legal Description:			
Lat: N 39.279 deg. OR N 39 deg. 16 min. 44.616 secs.		Long: W 107.913 deg. OR W -108 deg. 5 min. 14.532 secs.	
Contractor: Precision Drilling Corp.		Rig/Platform Name/Num: Precision 706	
Job Purpose: Cement Surface Casing			Ticket Amount:
Well Type: Development Well		Job Type: Cement Surface Casing	
Sales Person: METLI, MARSHALL		Srv Supervisor: KUKUS, CRAIG	MBU ID Emp #: 369124

Activity Description	Date/Time	Cht #	Rate bbl/min	Volume bbl		Pressure psig		Comments
				Stage	Total	Tubing	Casing	
Call Out	10/27/2011 16:00							
Depart Yard Safety Meeting	10/27/2011 18:30							SAFETY MEETING INVOLVING THE ENTIRE CMT CREW
Arrive At Loc	10/27/2011 20:00							RIG RUNNING CSG
Assessment Of Location Safety Meeting	10/27/2011 20:15							ASSESSMENT OF LOCATION INVOLVING THE ENTIRE CMT CREW
Pre-Rig Up Safety Meeting	10/27/2011 20:20							SAFETY MEETING INVOLVING THE ENTIRE CMT CREW
Rig-Up Equipment	10/27/2011 20:25							RIG UP STAND PIPE / BULK EQUIPMENT / WATER TO UP RIGHT
Circulate Well	10/27/2011 20:30							RIG
Pre-Job Safety Meeting	10/27/2011 21:50							SAFETY MEETING INVOLVING EVERYONE ON LOCATION
Start Job	10/27/2011 22:03							TD 1550 FT TP 1544 FT SJ 25.10 FT OH 12 1/4 IN PIPE 9 5/8 IN 36# MUD WT 10.3#
Other	10/27/2011 22:03		2	2			61.0	FILL LINES FRESH WATER
Pressure Test	10/27/2011 22:05		0.5			3500.0		PRESSURE TEST GOOD
Pump Spacer 1	10/27/2011 22:08		4	20			130.0	FRESH WATER SPACER
Pump Lead Cement	10/27/2011 22:15		5	59.3			191.0	PUMP 140 SKS LEAD CEMENT AT 12.3 PPG 2.38 Y 13.77 GAL/SK

Activity Description	Date/Time	Cht #	Rate bbl/min	Volume bbl		Pressure psig		Comments
				Stage	Total	Tubing	Casing	
Pump Tail Cement	10/27/2011 22:27		5	45.8			192.0	PUMP 180 SKS TAIL CEMENT AT 14.2 PPG 1.43 Y 6.85 GAL/SK
Shutdown	10/27/2011 22:35							READY TUB / WASH ON TOP P;LUG
Drop Top Plug	10/27/2011 22:39							PLUG LEFT THE PLUG CONTAINER
Pump Displacement	10/27/2011 22:39		9	117.4			780.0	DISPLACE WITH FRESH WATER
Slow Rate	10/27/2011 22:53		2	107			485.0	SLOW RATE TO 2 BBL LAST 10 BBLS
Bump Plug	10/27/2011 22:58		2	117			1021.0	PLUG LANDED AT 510 PSI
Check Floats	10/27/2011 22:59							FLOATS HELD / GOT 1/2 BBL BACK TO TANKS
End Job	10/27/2011 23:01							HAD GOOD RETURNS THRU OUT THE JOB / GOT CEMENT TO SURFACE TOTAL BACK 37 BBLS CEMENT
Pre-Rig Down Safety Meeting	10/27/2011 23:04							SAFETY MEETING INVOLVING THE ENTIRE CMT CREW
Rig-Down Equipment	10/27/2011 23:10							RIG FLOOR DOWN / CLEAN UP AND RIG DOWN
Safety Meeting - Departing Location	10/28/2011 01:10							SAFETY MEETING INVOLVING THE ENTIRE CMT CREW
Comment	10/28/2011 01:15							THANK YOU FOR USING HALLIBURTON, CRAIG KUKUS AND CREW

LARAMIE SURFACE PRECISION 706



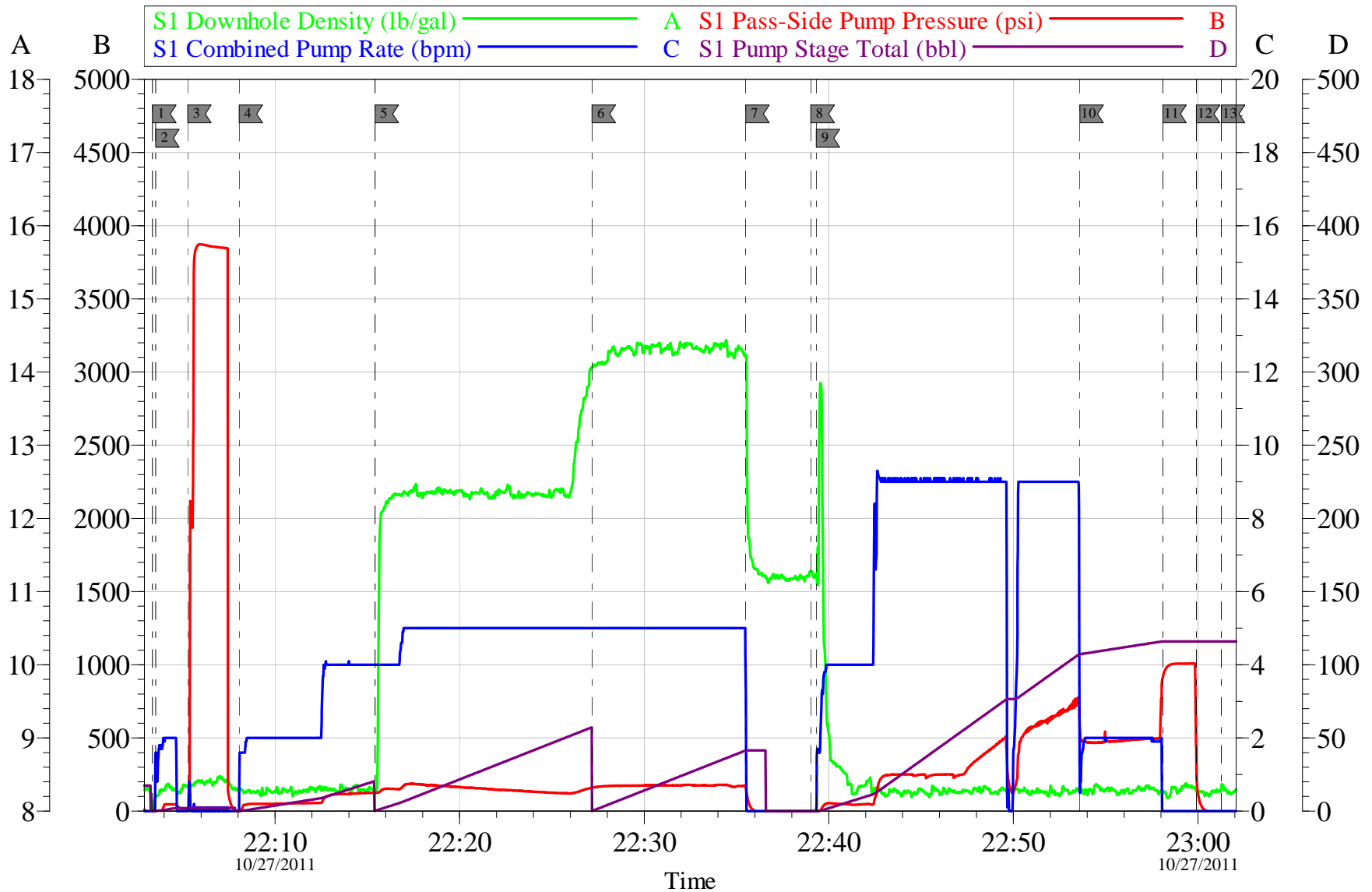
Customer: **LARAMIE**
Well Description: **HAWXHURST 17-05B**
Company Rep: **KELLY CLAUSEN**

Job Date: **27-Oct-2011**
Job Type: **SURFACE**
Cement Supervisor: **CRAIG KUKUS**

Sales Order #: **9018666**
ADC Used: **YES**
Elite #/Operator: **E 8 BRENNAN BURKE**

OptiCem v6.4.8
27-Oct-11 23:20

LARAMIE SURFACE PRECISION 706



Customer: **LARAMIE**
 Well Description: **HAWXHURST 17-05B**
 Company Rep: **KELLY CLAUSEN**

Job Date: **27-Oct-2011**
 Job Type: **SURFACE**
 Cement Supervisor: **CRAIG KUKUS**

Sales Order #: **9018666**
 ADC Used: **YES**
 Elite #/Operator: **E 8 BRENNAN BURKE**

OptiCem v6.4.8
 27-Oct-11 23:23

Sales Order #: 9018666	Line Item: 10	Survey Conducted Date: 10/28/2011
Customer: LARAMIE ENERGY II LLC EBUSINESS		Job Type (BOM): CMT SURFACE CASING BOM
Customer Representative: KELLY CLAUSEN		API / UWI: (leave blank if unknown) 05-077-10159
Well Name: HAWXHURST		Well Number: 17-05B
Well Type: Development Well	Well Country: United States of America	
H2S Present: No	Well State: Colorado	Well County: Mesa

Dear Customer,

We hope that you were satisfied with the service quality of this job performed by Halliburton. It is the aim of our management and service personnel to deliver equipment and service of a standard unmatched in the service sector of the energy industry.

Please take the time to let us know if our performance met with your satisfaction. Please be as critical as possible to ensure we constantly improve our service. Your comments are of great value to us and are intended for the exclusive use of Halliburton.

CUSTOMER SATISFACTION SURVEY

CATEGORY	CUSTOMER SATISFACTION RESPONSE	
Survey Conducted Date	The date the survey was conducted	10/28/2011
Survey Interviewer	The survey interviewer is the person who initiated the survey.	CRAIG KUKUS (HX19742)
Customer Participation	Did the customer participate in this survey? (Y/N)	Yes
Customer Representative	Enter the Customer representative name	KELLY CLAUSEN
HSE	Was our HSE performance satisfactory? Circle Y or N	Yes
Equipment	Were you satisfied with our Equipment? Circle Y or N	Yes
Personnel	Were you satisfied with our people? Circle Y or N	Yes
Customer Comment	Customer's Comment	
Job DVA	Did we provide job DVA above our normal service today? Circle Y or N	No
Time	Please enter hours in decimal format to nearest quarter hour.	
Other	Enter short text for other efficiencies gained.	
Customer Initials	Customer's Initials	
Please provide details	Please describe how the job efficiencies were gained.	

CUSTOMER SIGNATURE