



Mesa Wireline

CEMENT BOND LOG

Company	ENCANA OIL & GAS (USA) INC
Well	POWERS #1
Field	WATTENBERG
County	WELD
State	COLORADO
Location:	API #: 05-123-09409-0000
SEC. 24 TWP. 2N RGE. 65W	SHL: 1650' FNL & 990' FWL NWSW
Permanent Datum	GROUNDLEVEL
Log Measured From	KELLY BUSHING = 13'
Drilling Measured From	KELLY BUSHING
Elevation	4894'
Other Services	NONE

Date	29 JANUARY 2012	31 JANUARY 2012
Run Number	ONE	TWO
Depth Driller	7750'	7750'
Depth Logger	7550'	1300'
Bottom Logged Interval	7550'	1300'
Top Log Interval	SURFACE	SURFACE
Open Hole Size	7.875"	7.875"
Type Fluid	WATER	WATER
Density / Viscosity	~8.3#	~8.3#
Max. Recorded Temp.	251 DEGF	N/A
Estimated Cement Top	6580'	SURFACE
Time Well Ready	N/A	N/A
Time Logger on Bottom	N/A	N/A
Equipment Number	19701/PRB001	19701/PRB001
Location	AULT, CO	AULT, CO
Recorded By	V-FULLER	V-FULLER
Witnessed By	GARY CUMMINGS	GARY CUMMINGS
Run Number	ONE	TWO
Bit	UNK	UNK
From	0'	UNK
To	7.875"	7693'
Size	24#	0"
Weight	0'	7693'
From	0'	7693'
To	7693'	7693'

<<< Fold Here >>>

All interpretations are opinions based on inferences from electrical or other measurements and we cannot and do not guarantee the accuracy or correctness of any interpretation, and we shall not, except in the case of gross or willful negligence on our part, be liable or responsible for any loss, costs, damages, or expenses incurred or sustained by anyone resulting from any interpretation made by any of our officers, agents or employees. These interpretations are also subject to our general terms and conditions set out in our current Price Schedule.

Comments

LOG CORRELATED TO SCHLUMBERGER COMPENSATED FORMATION DENSITY LOG DATED 2-28-1978
SHORT JOINT

WE APPRECIATE YOUR BUSINESS, MESA WIRELINE LLC, GRAND JUNCTION CO. (970) 257-0458



SQUEEZE PASS

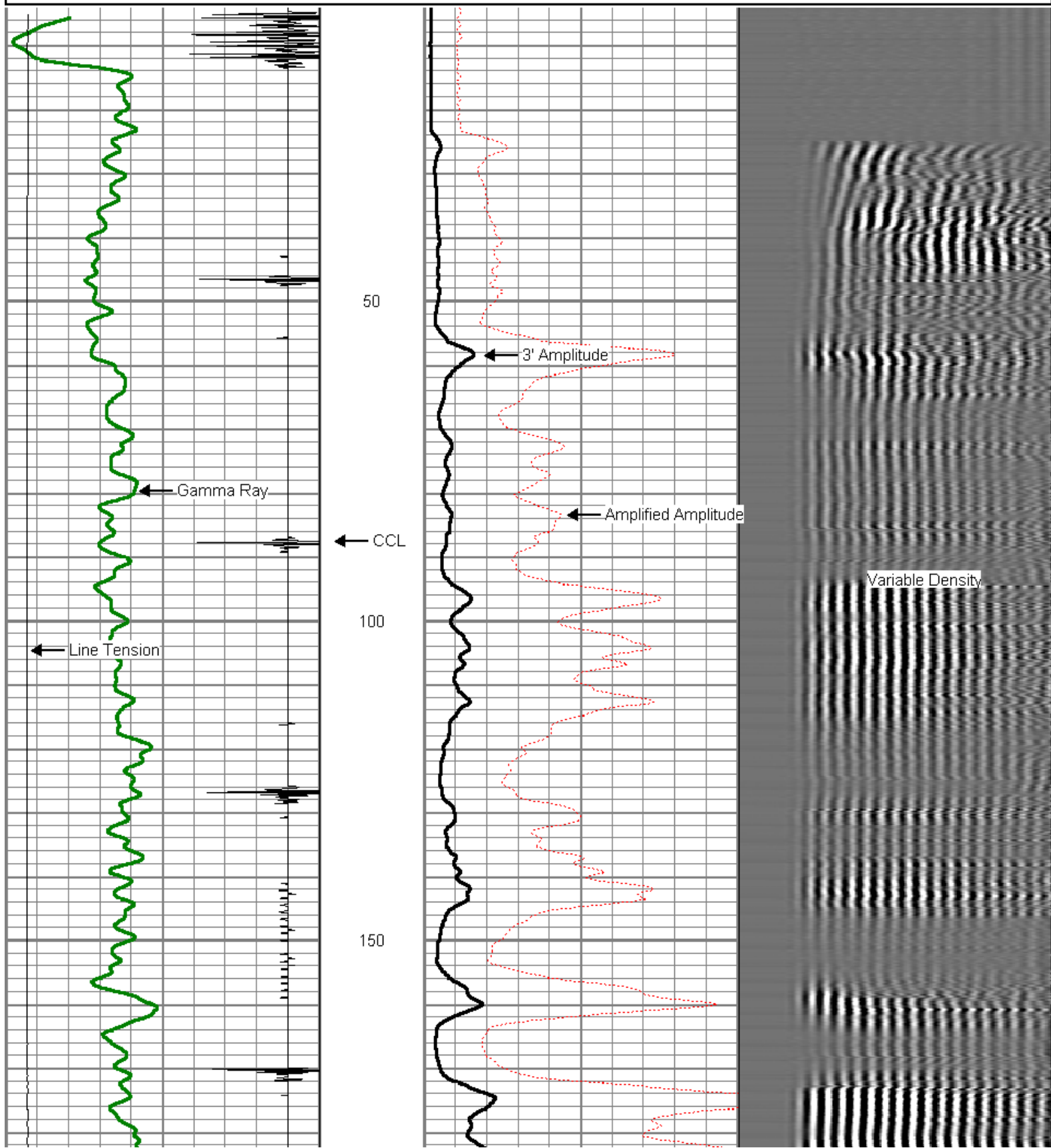
5" = 100'

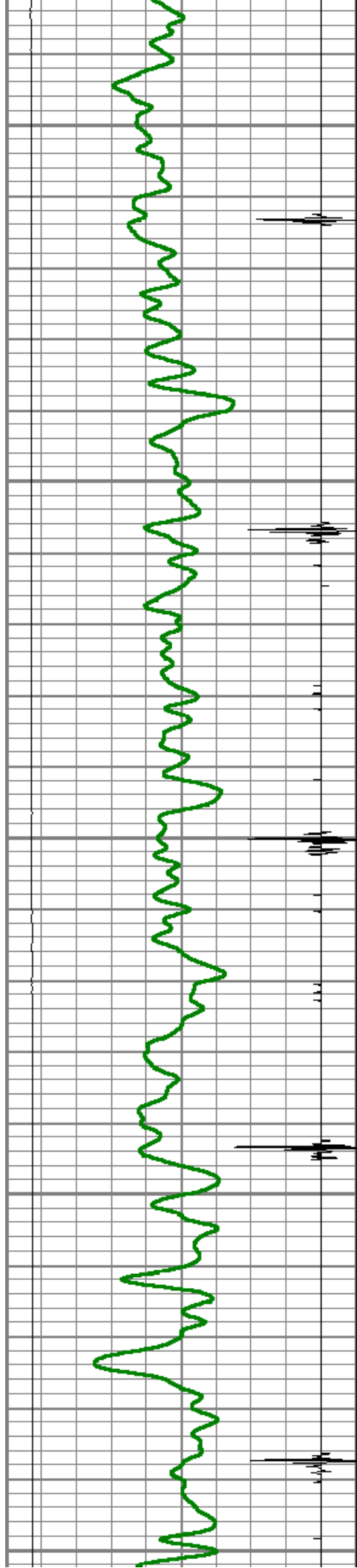
Mesa Wireline

Database File: powers #1.db
Dataset Pathname: pass9.3
Presentation Format: dcbl_prb
Dataset Creation: Tue Jan 31 12:08:35 2012 by Calc SCH 110722
Charted by: Depth in Feet scaled 1:240

0	Gamma Ray (GAPI)	200
0	LTEN (lb)	5000
9	CCL	-1

0	Amplified Amplitude (mV)	20	200	Variable Density	1200
0	Amplitude (mV)	100			
0	TT3 (usec)	280			





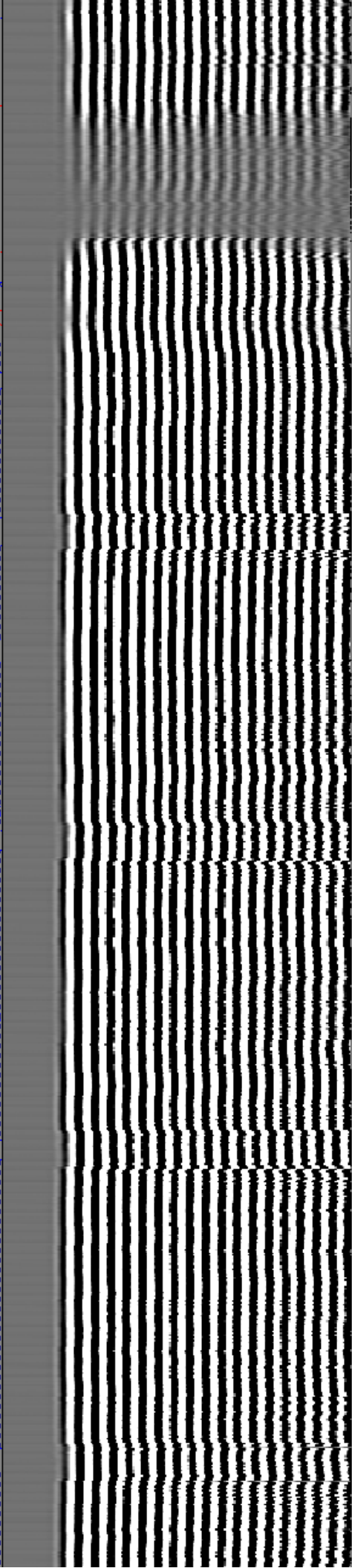
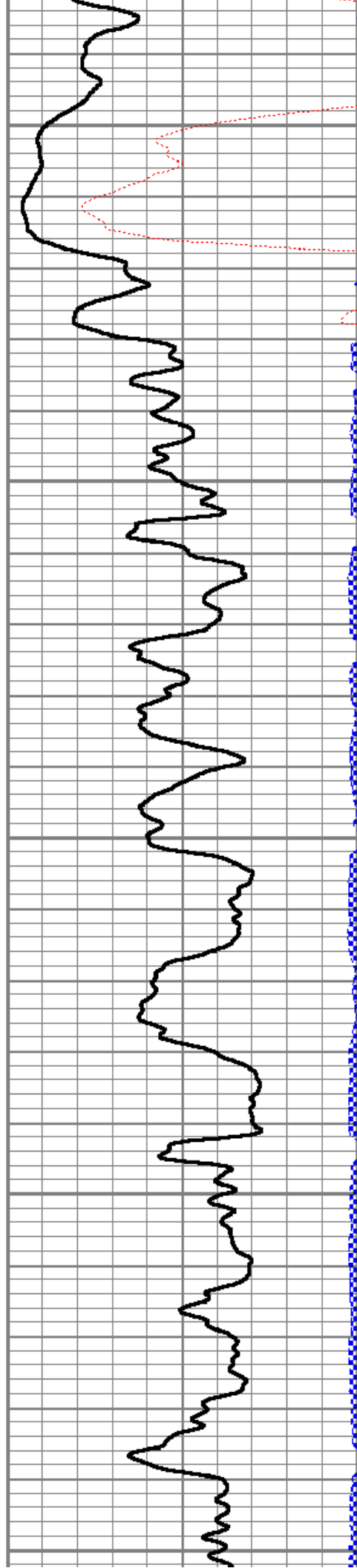
200

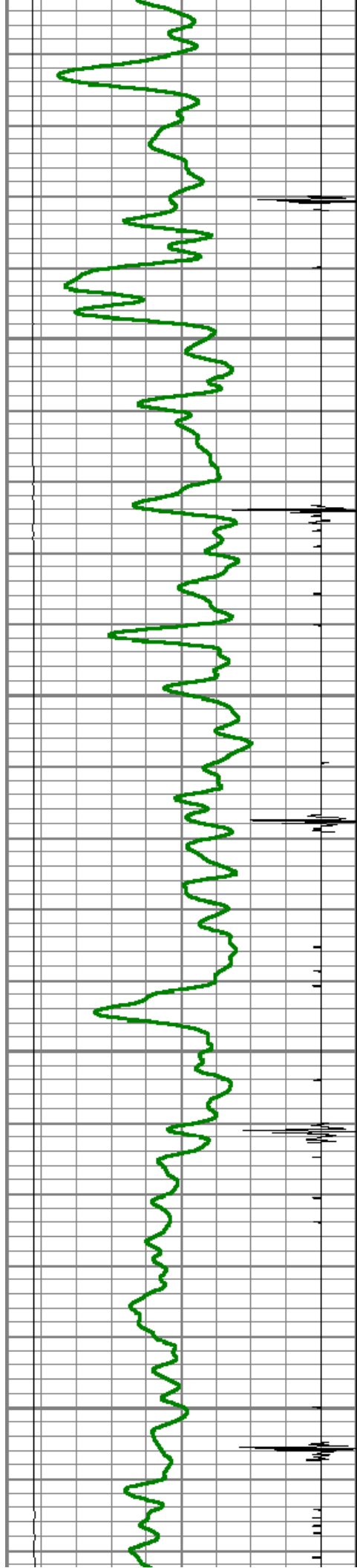
250

300

350

400



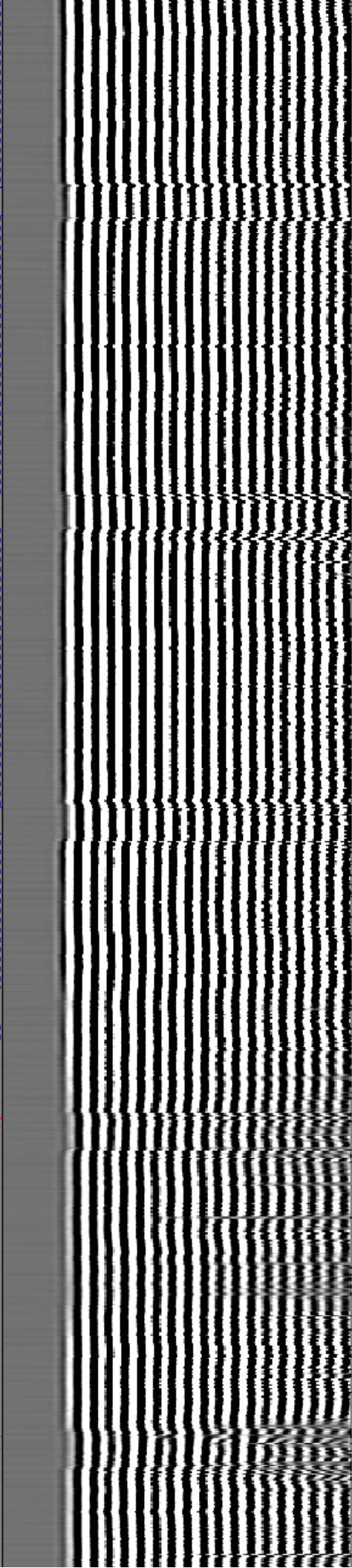
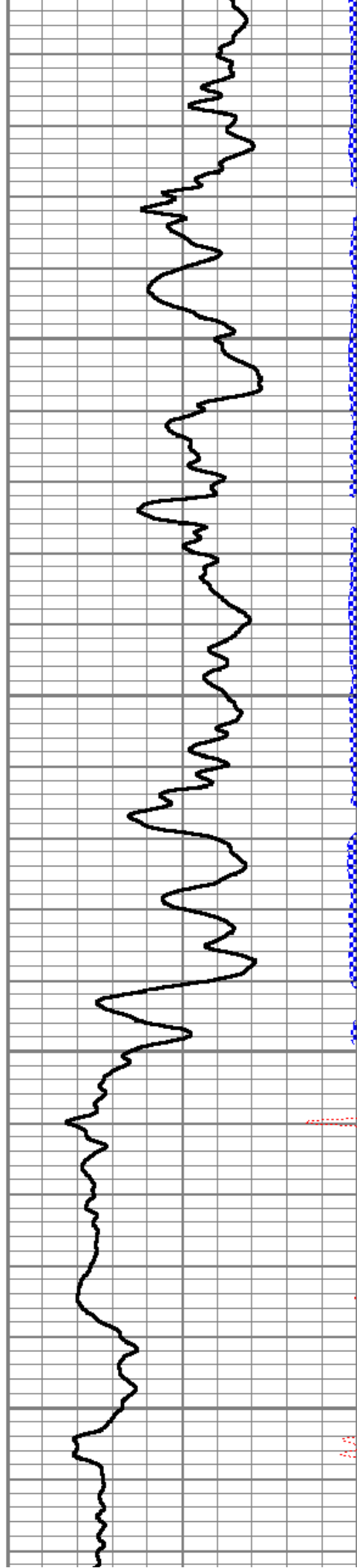


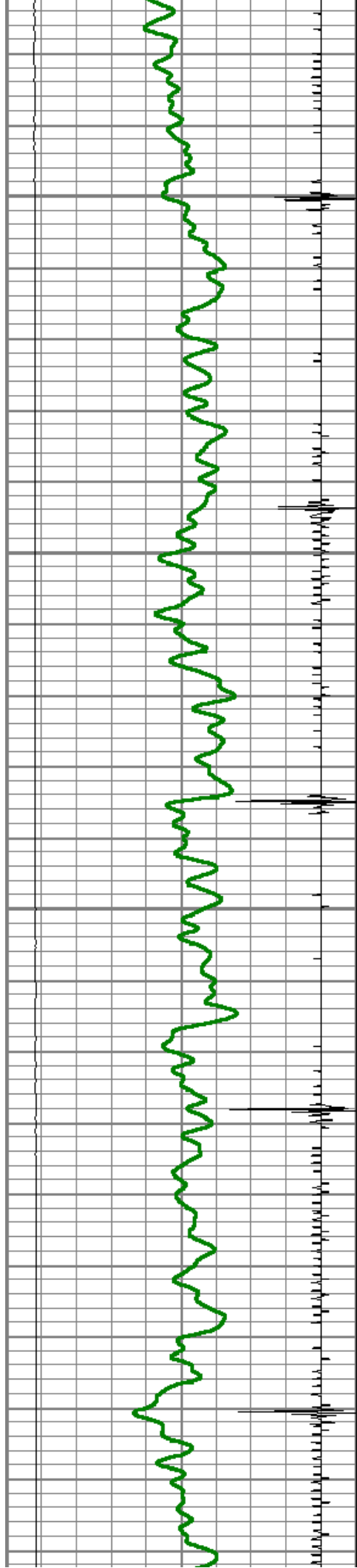
450

500

550

600



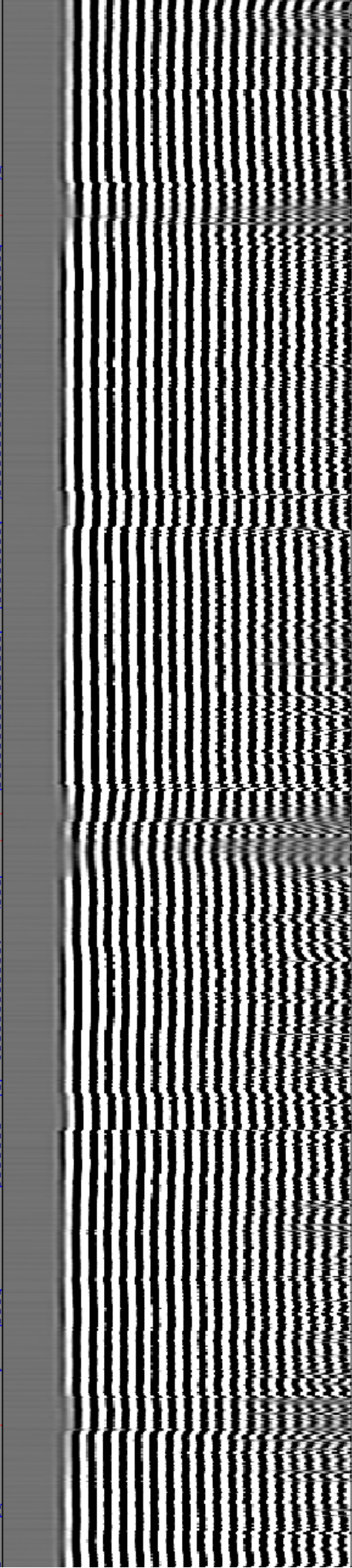
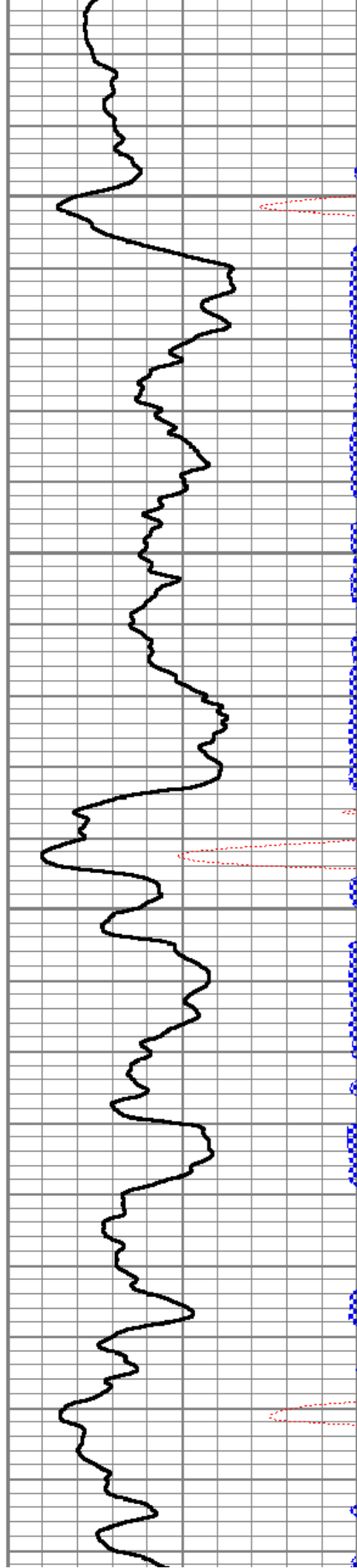


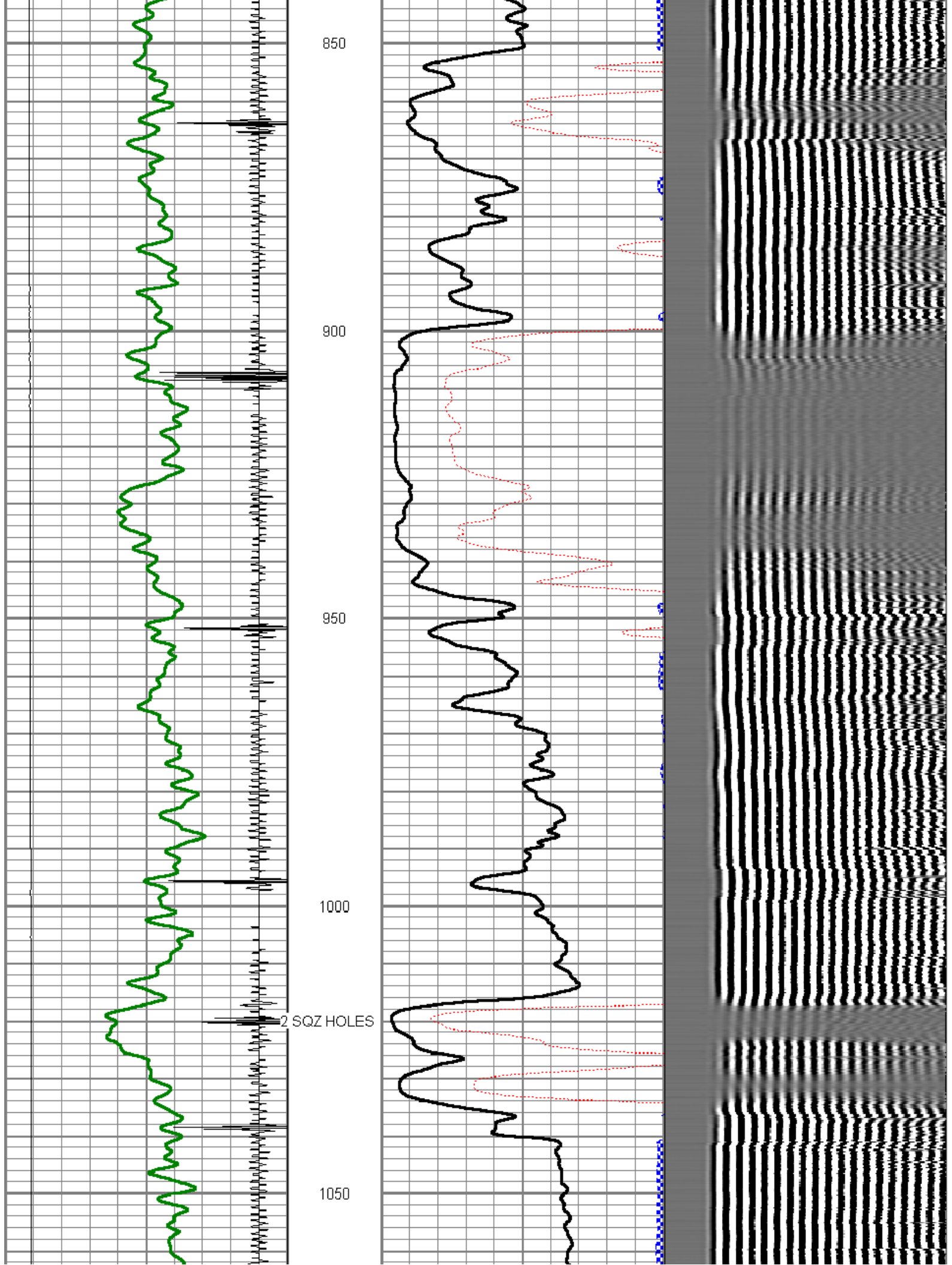
650

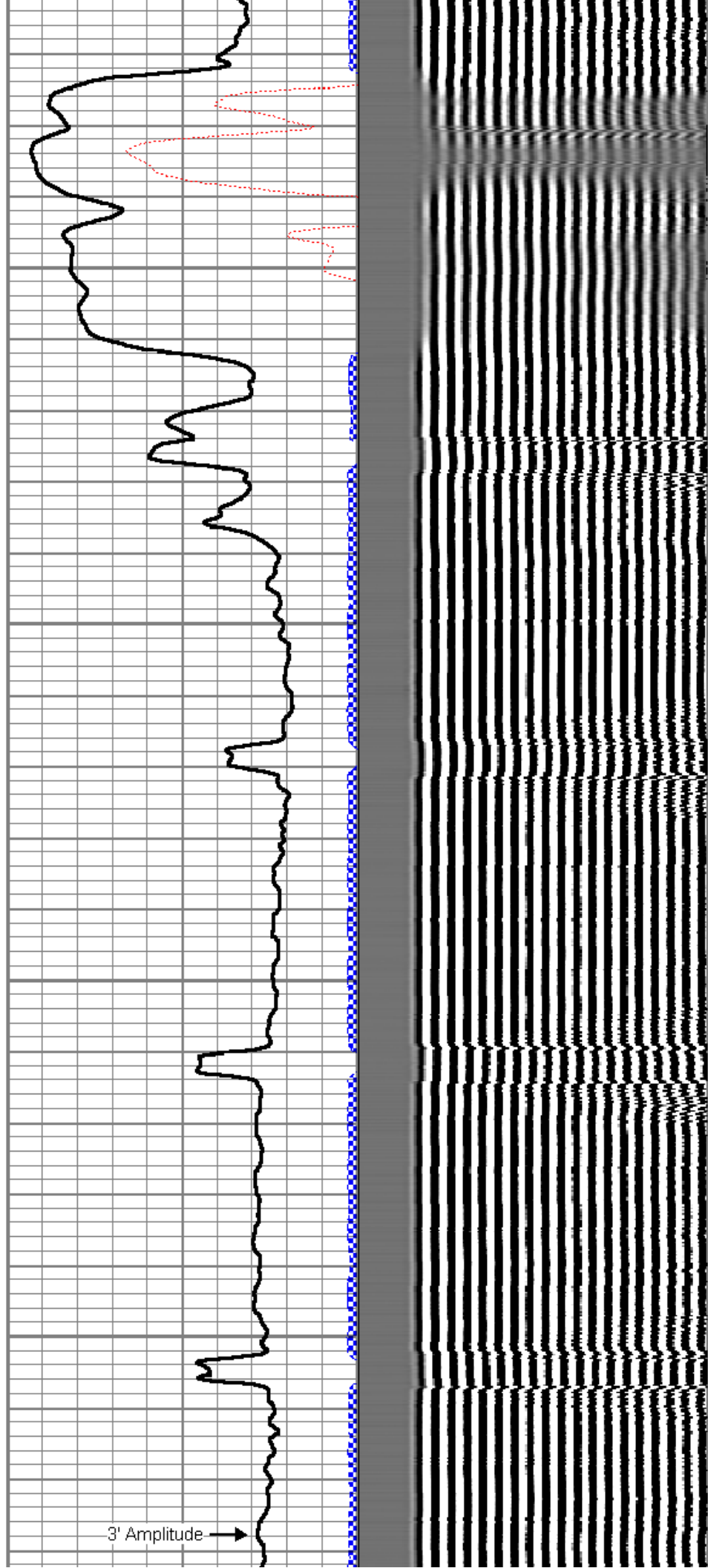
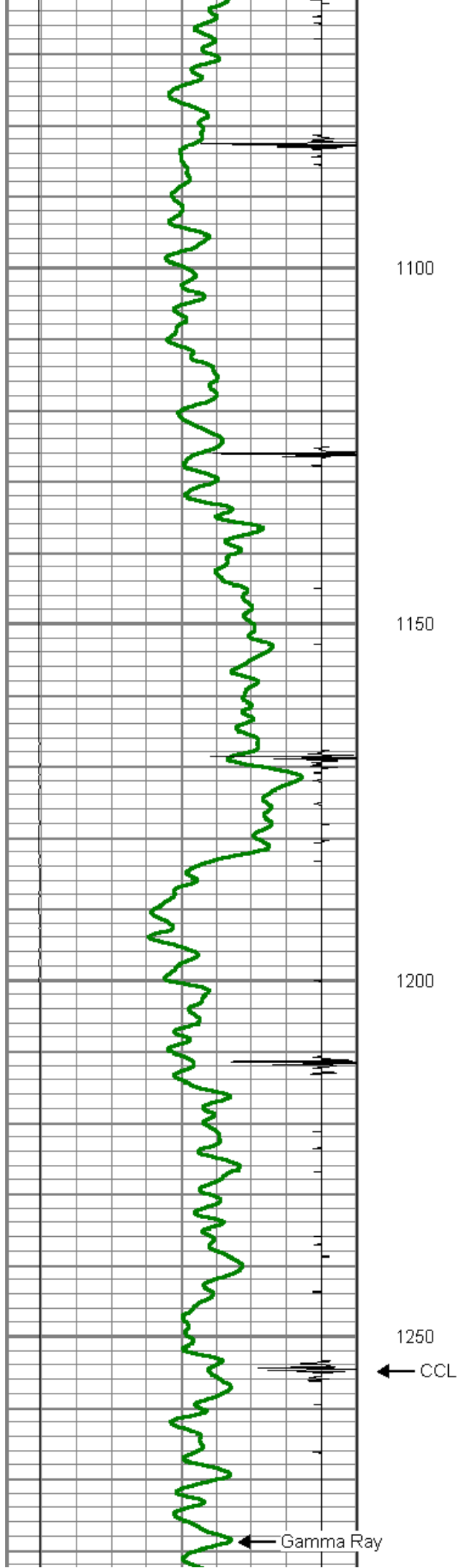
700

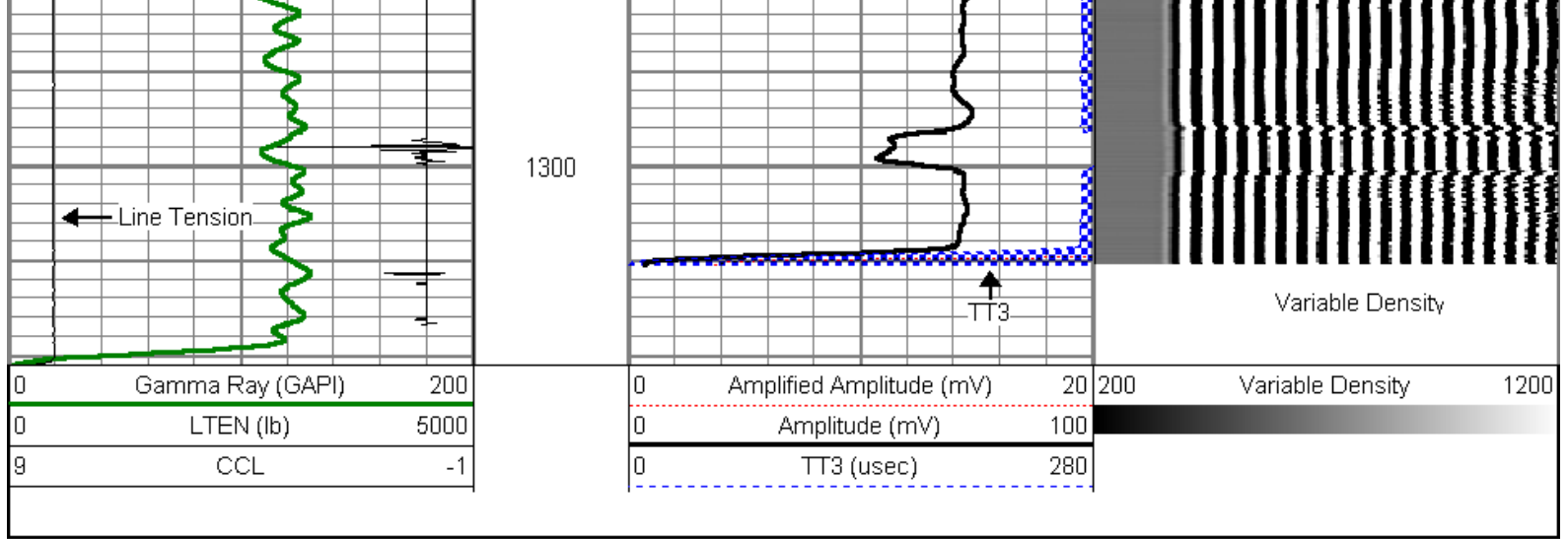
750

800





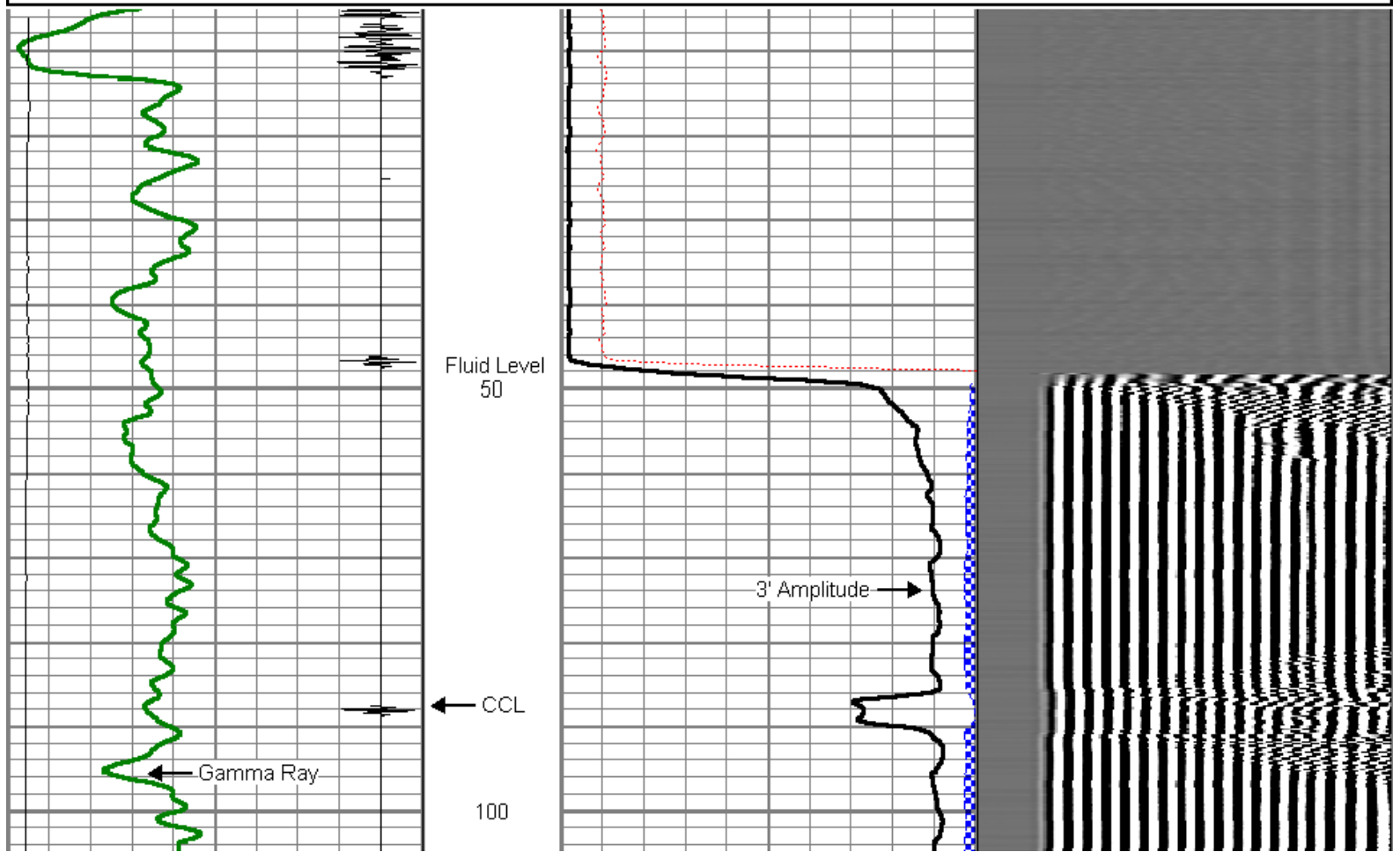
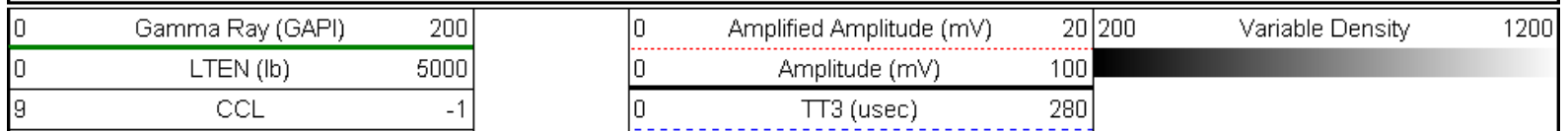


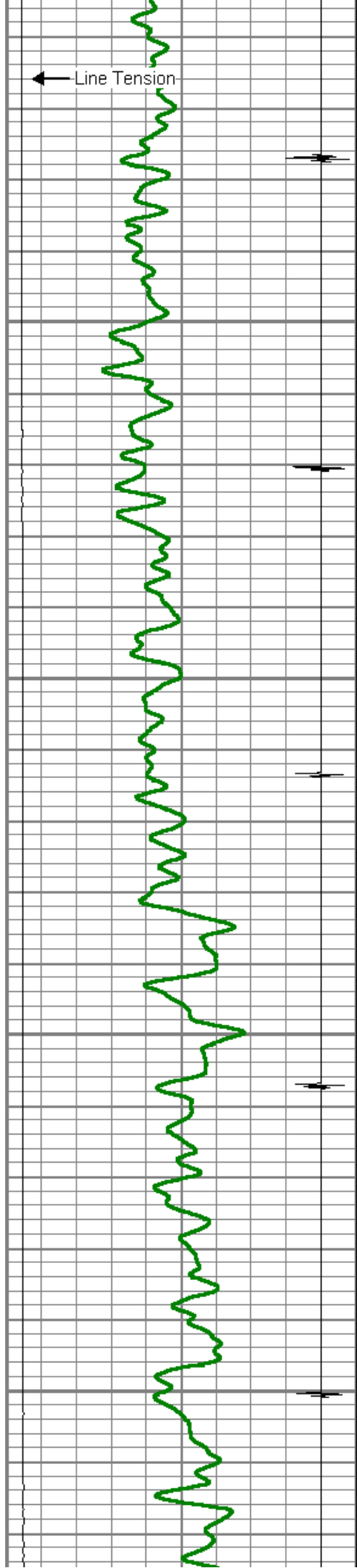


TOP PASS BEFORE SQUEEZE

5" = 100'

Database File: powers #1.db
 Dataset Pathname: pass5
 Presentation Format: dcbl_prb
 Dataset Creation: Sun Jan 29 16:19:40 2012 by Log SCH 110722
 Charted by: Depth in Feet scaled 1:240



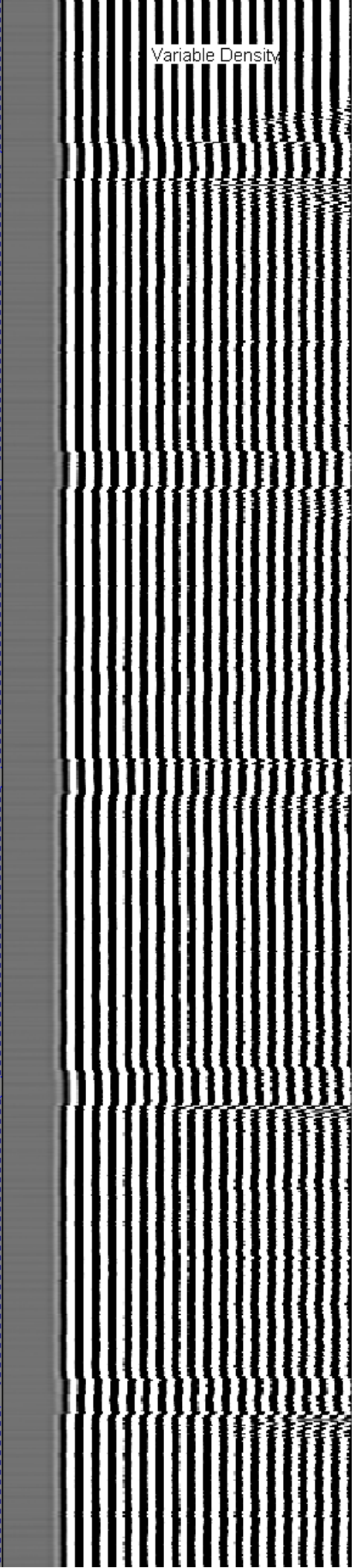
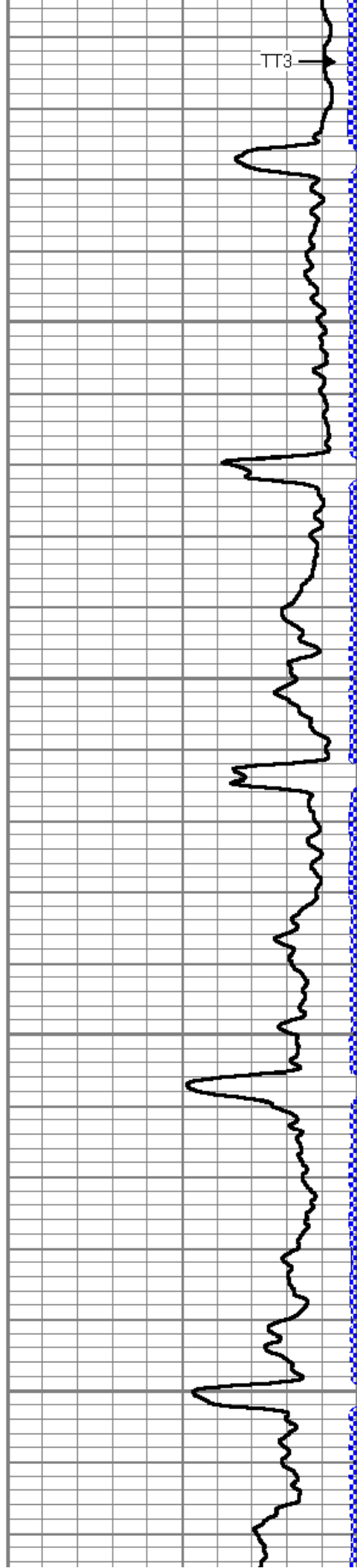


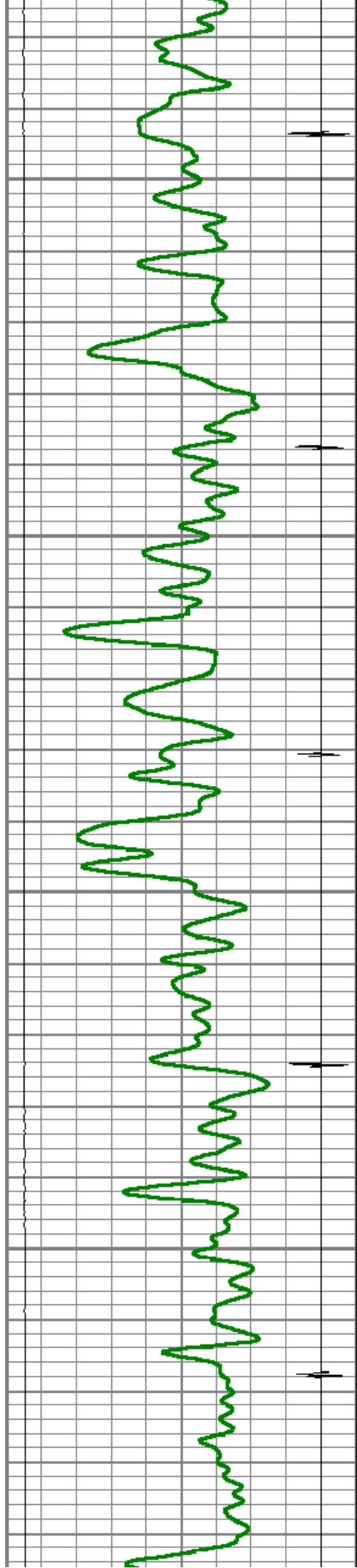
150

200

250

300



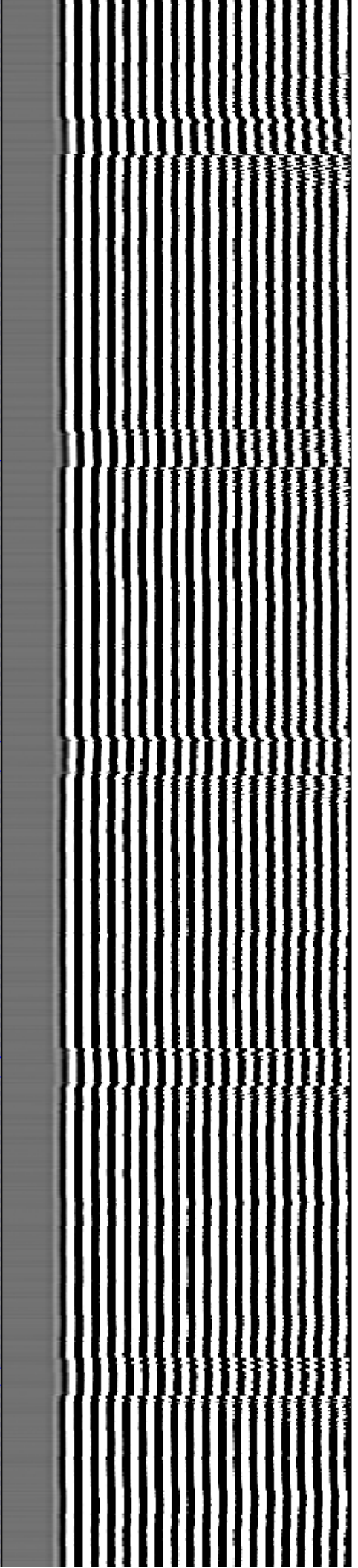
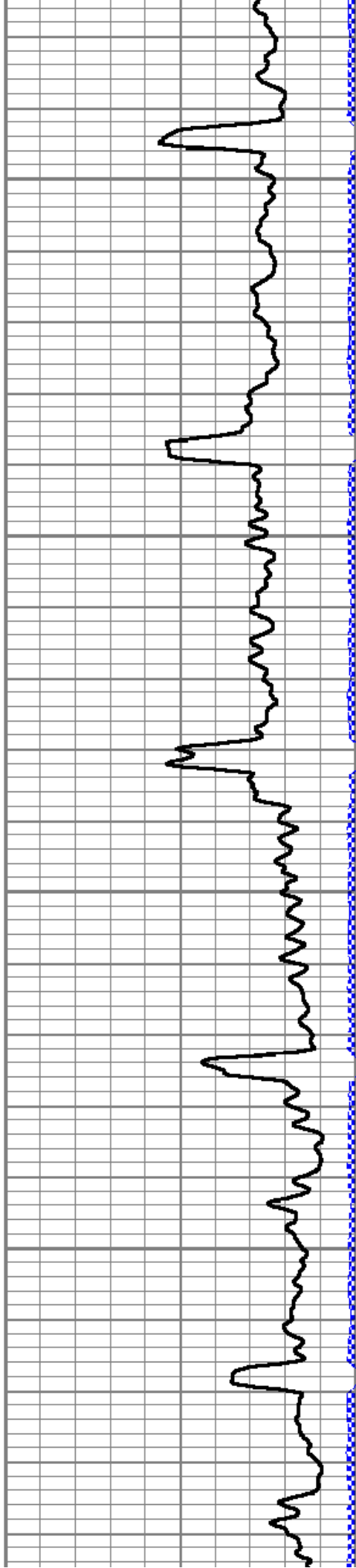


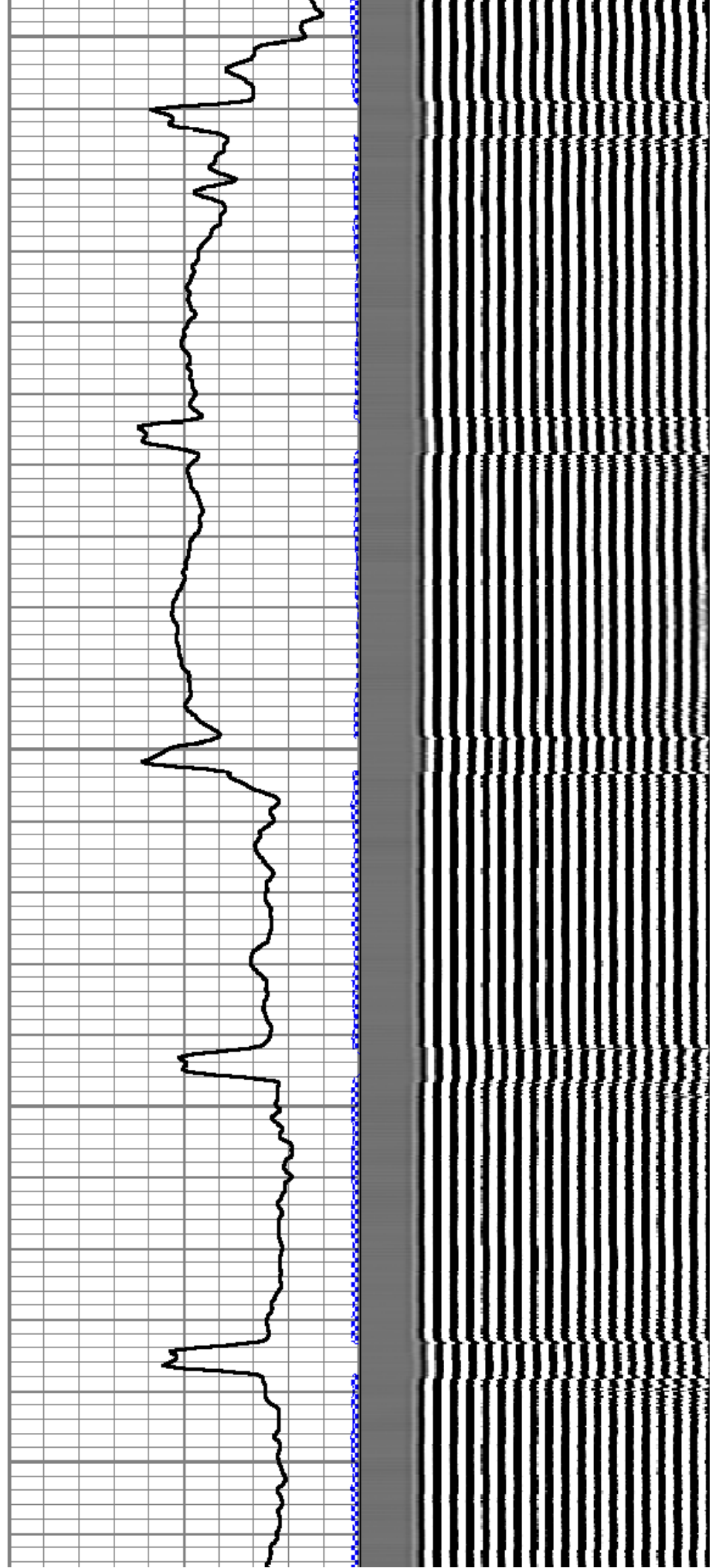
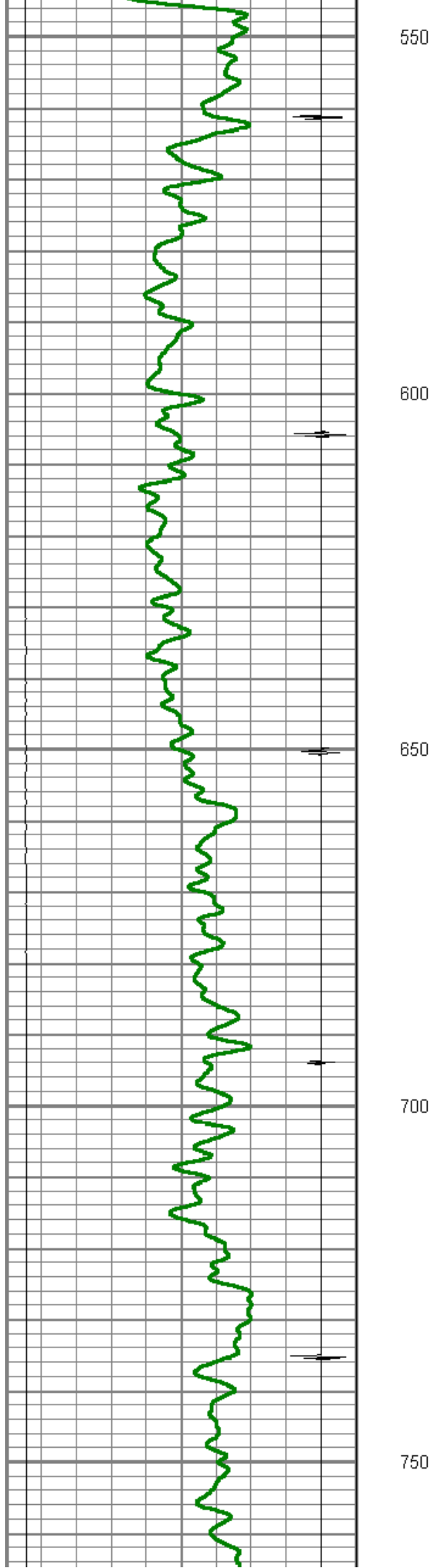
350

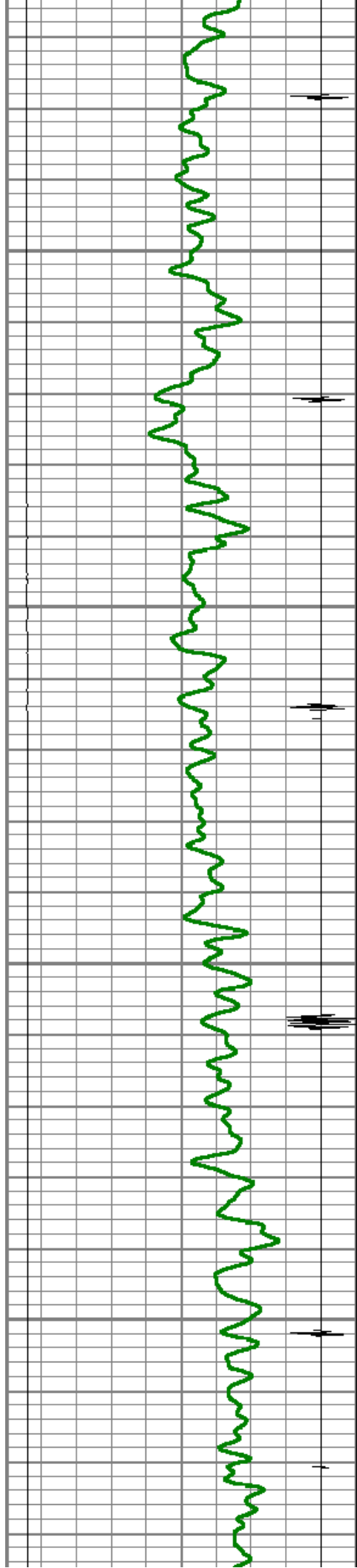
400

450

500





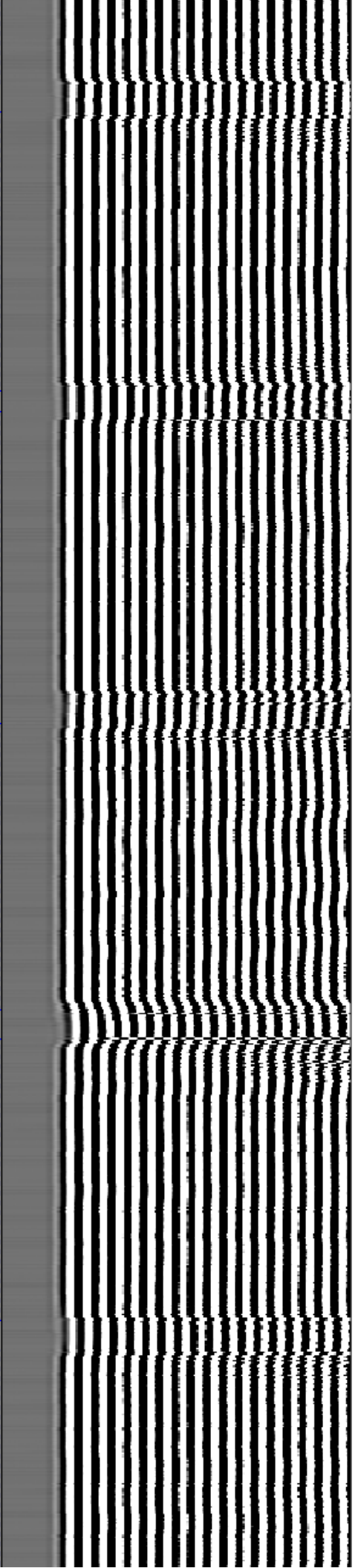
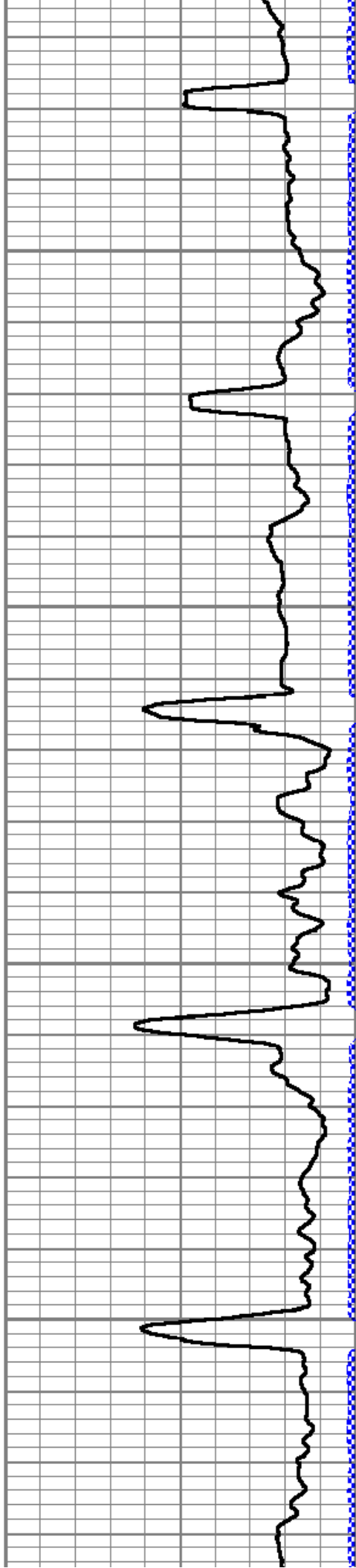


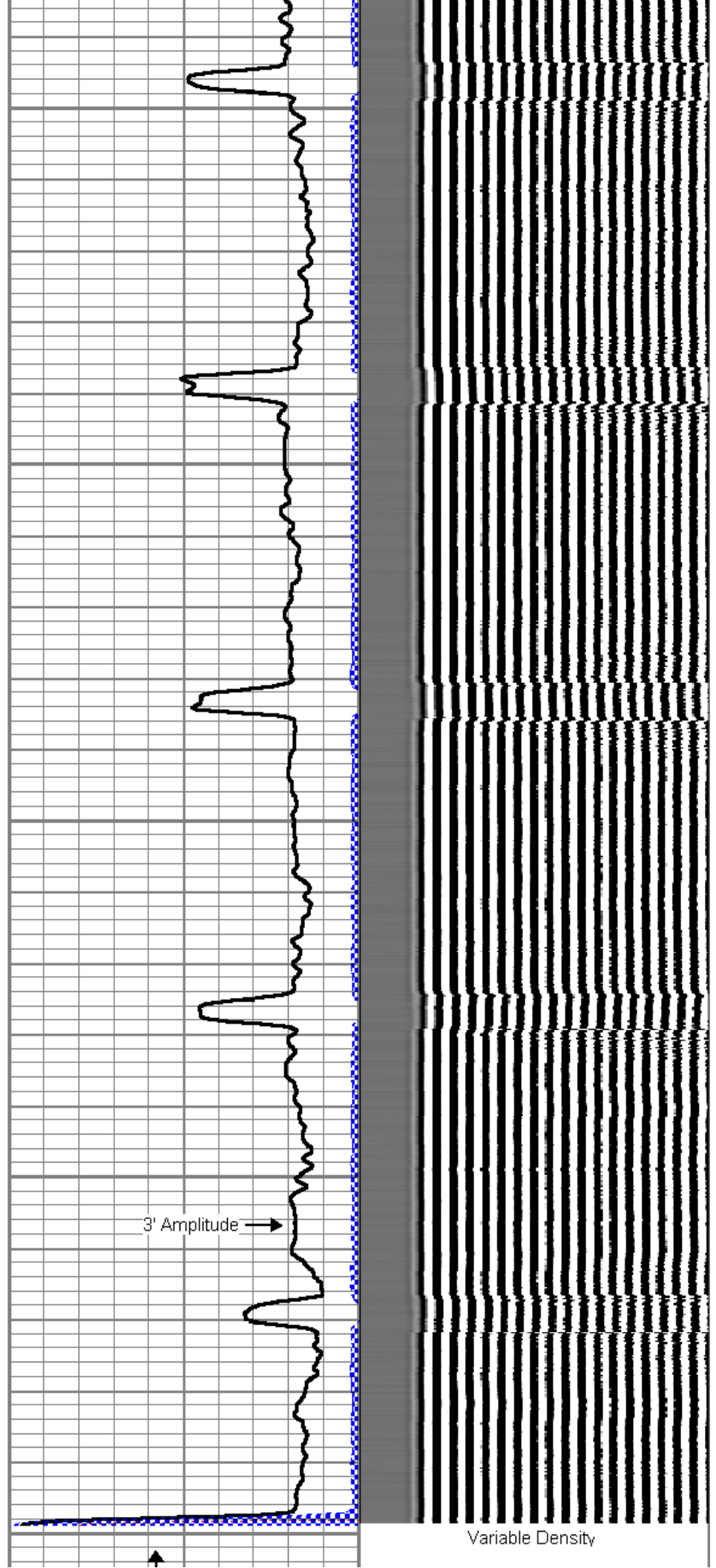
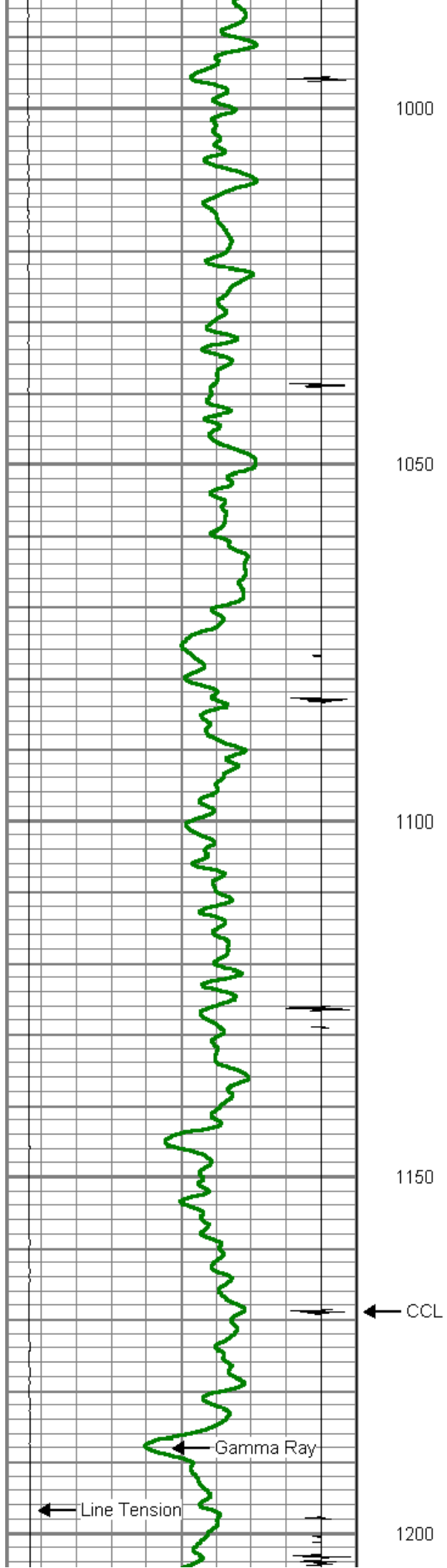
800

850

900

950





0	Gamma Ray (GAPI)	200
0	LTEN (lb)	5000
9	CCL	-1

		TT3	
0	Amplified Amplitude (mV)	20	200
0	Amplitude (mV)	100	
0	TT3 (usec)	280	

Variable Density 1200



MAIN PASS

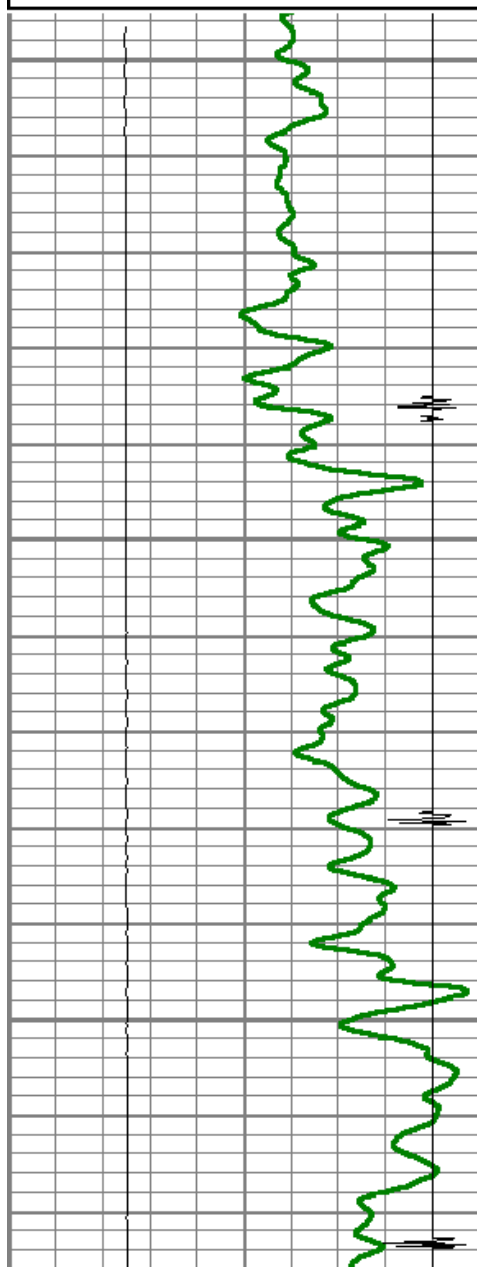
5" = 100'

Database File: powers #1.db
 Dataset Pathname: pass4
 Presentation Format: dcbl_prb
 Dataset Creation: Sun Jan 29 15:31:34 2012 by Log SCH 110722
 Charted by: Depth in Feet scaled 1:240

0	Gamma Ray (GAPI)	200
0	LTEN (lb)	5000
9	CCL	-1

0	Amplified Amplitude (mV)	20	200
0	Amplitude (mV)	100	
0	TT3 (usec)	280	

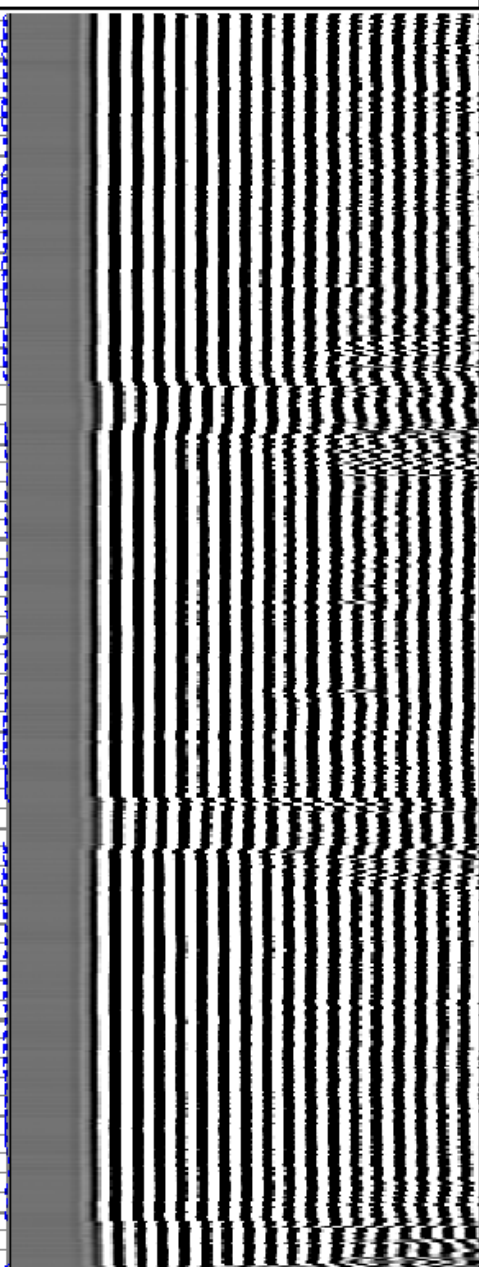
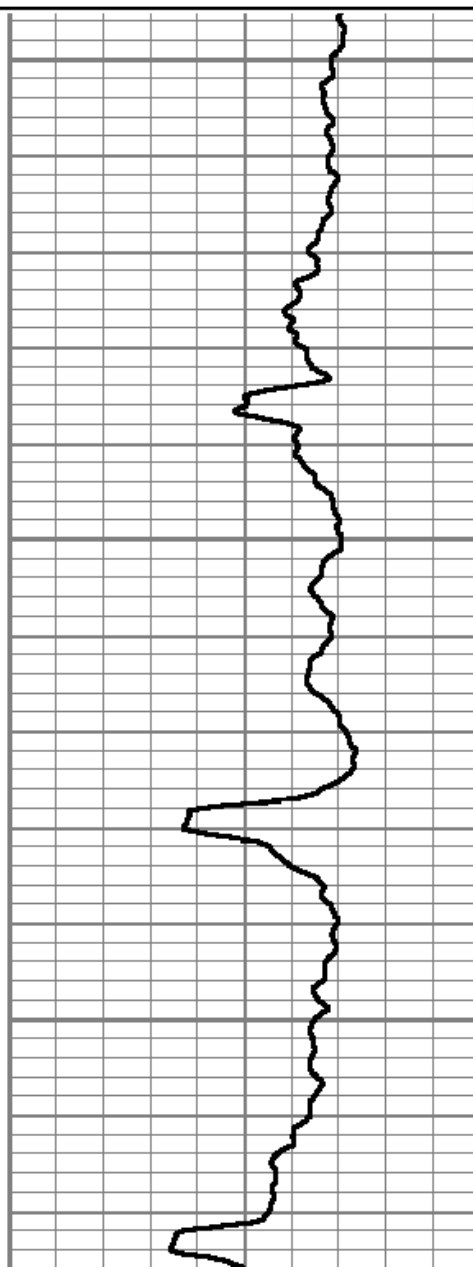
Variable Density 1200

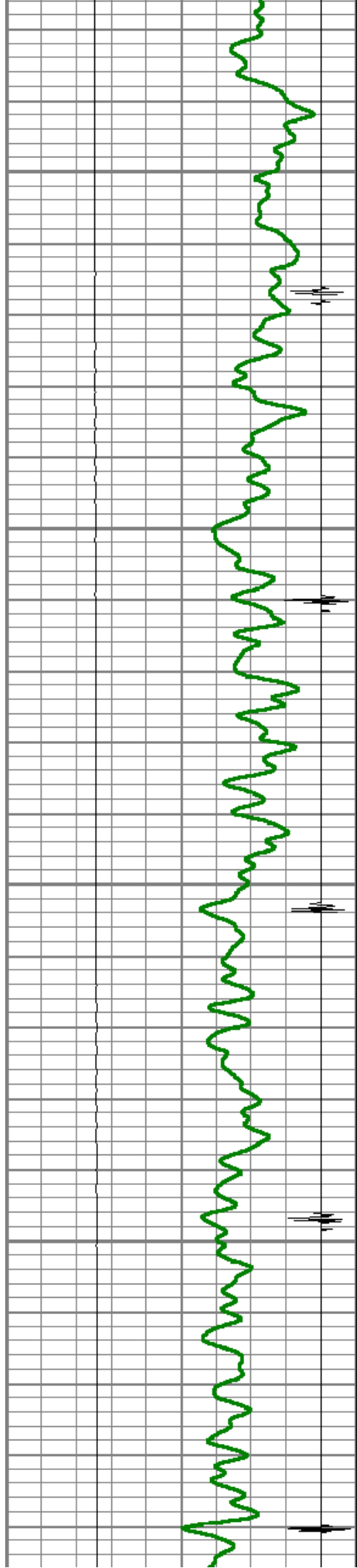


6000

6050

6100



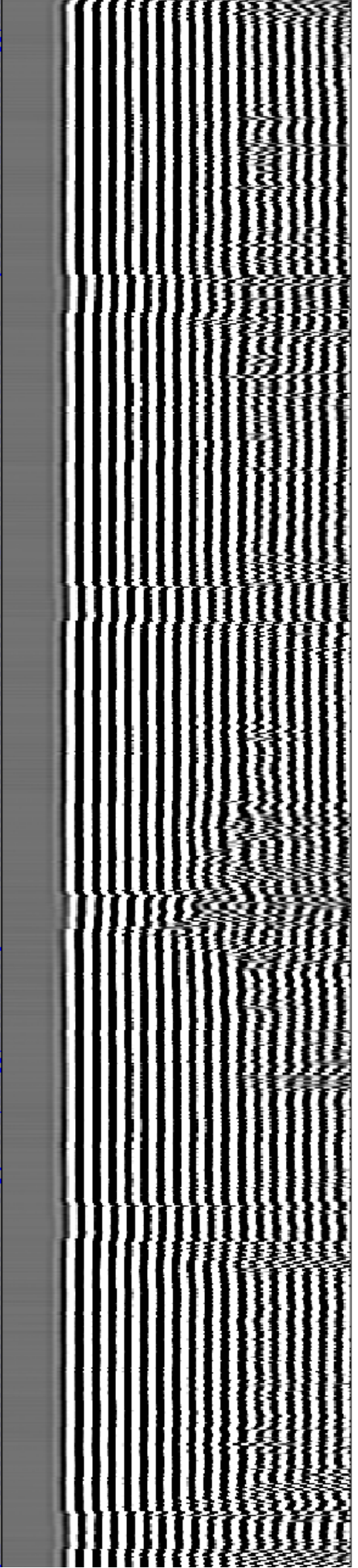
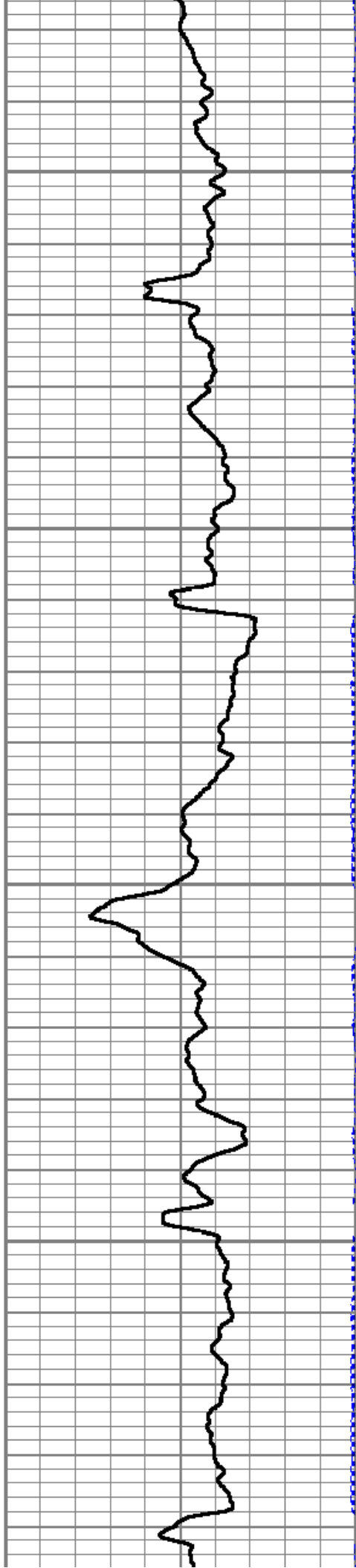


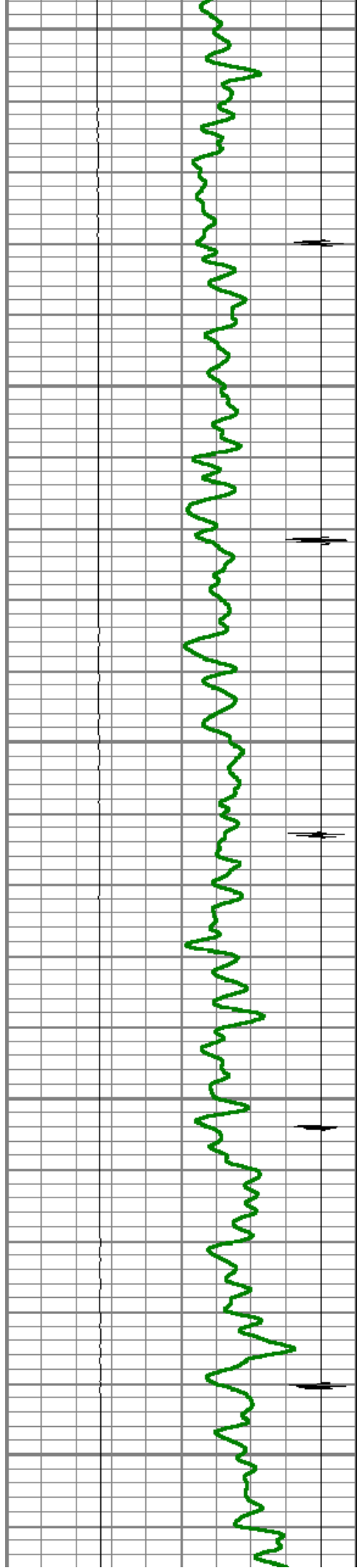
6150

6200

6250

6300





6350

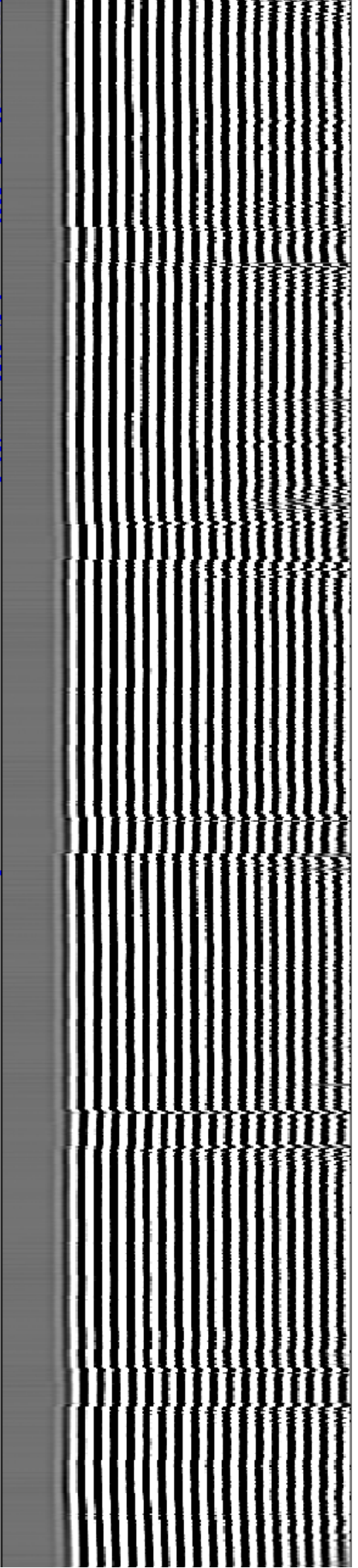
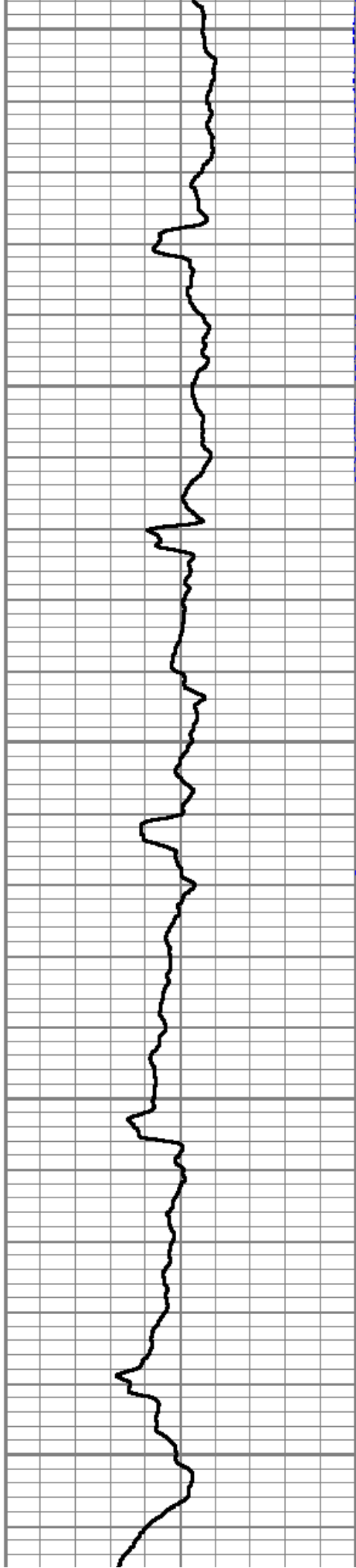
6400

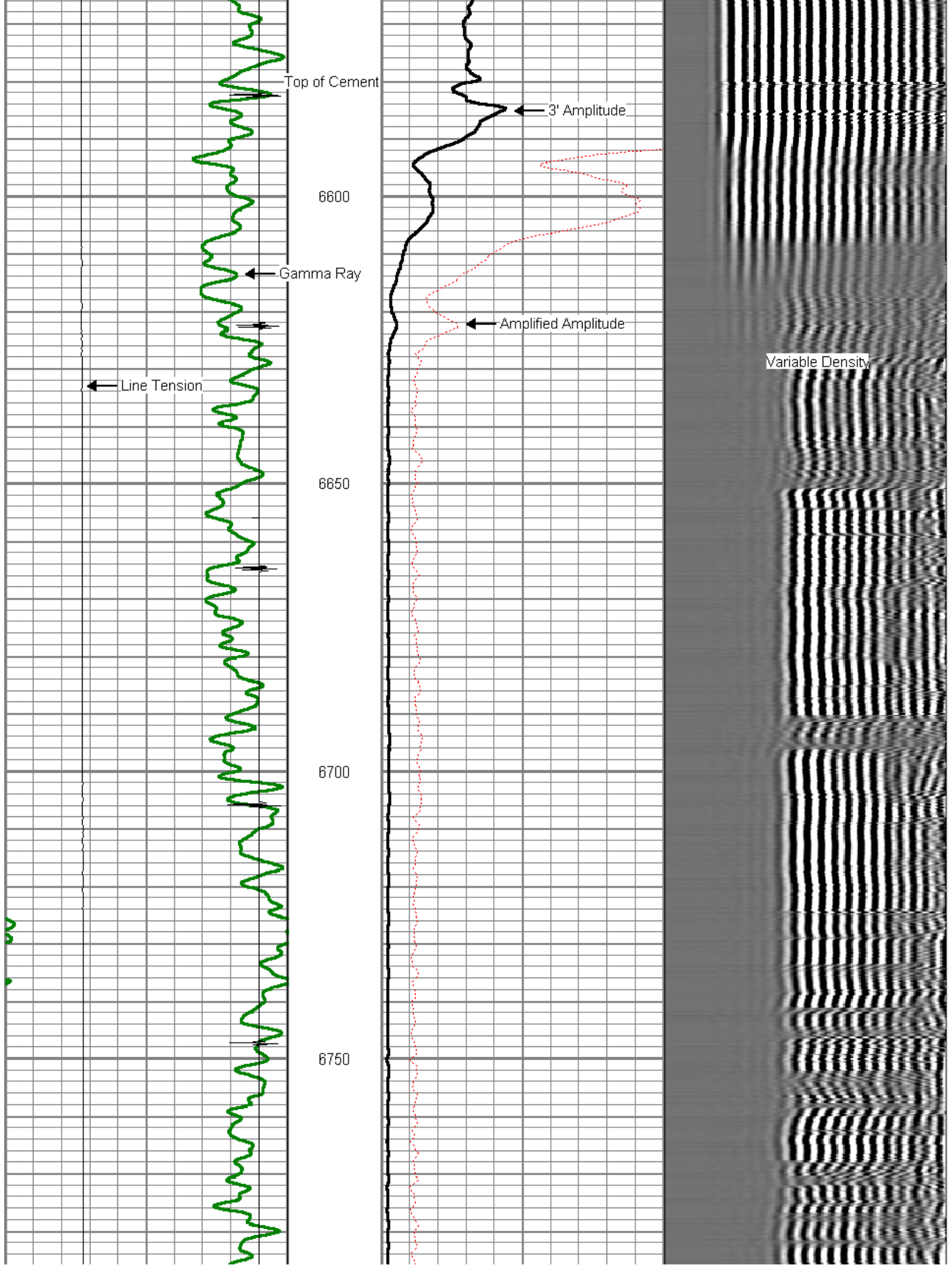
6450

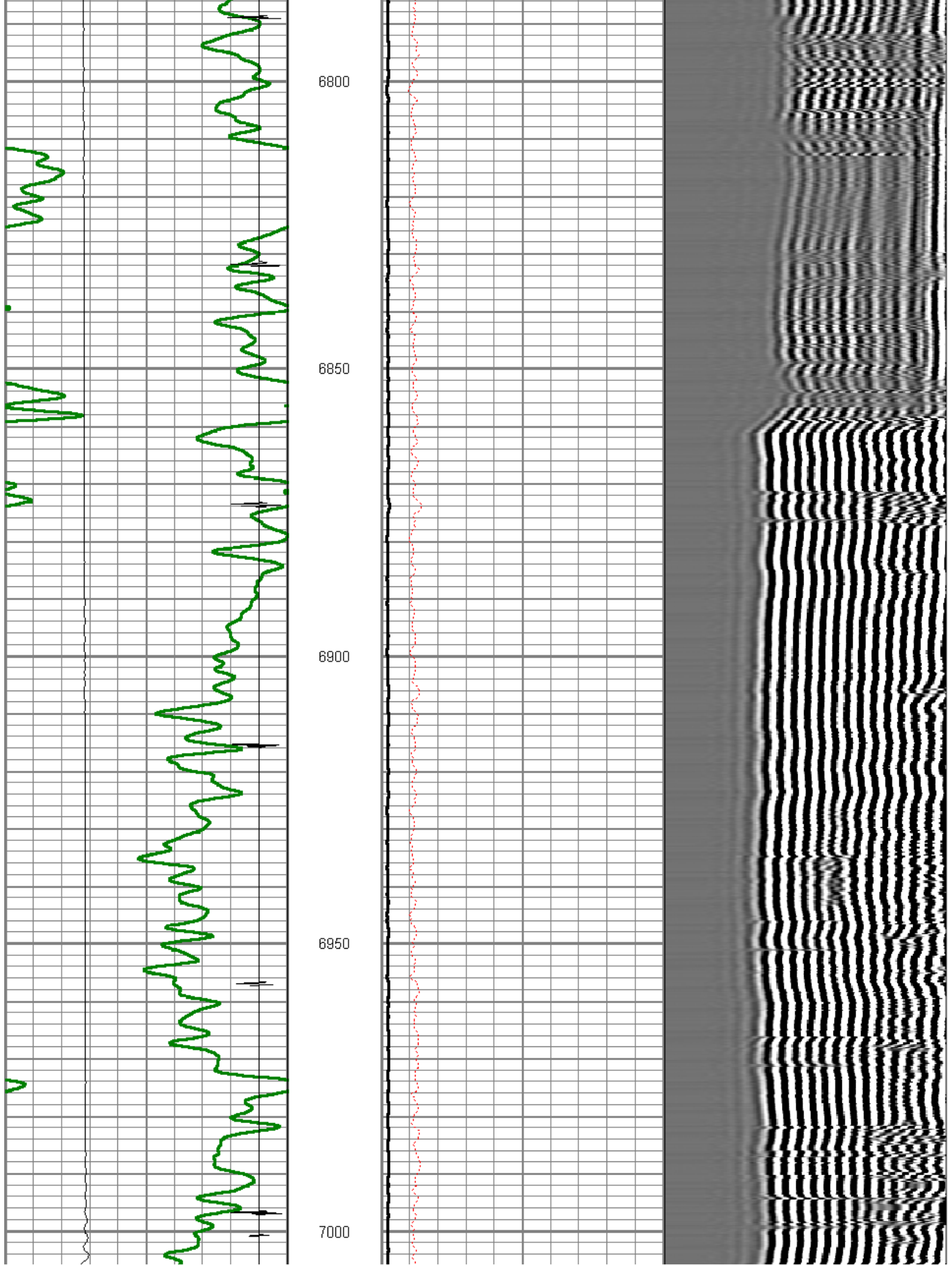
6500

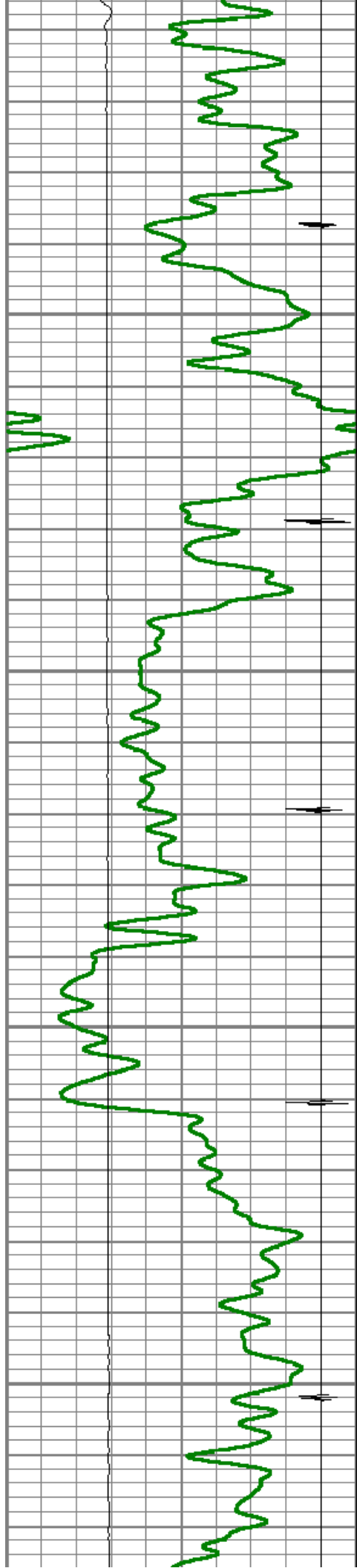
6550

← CCL







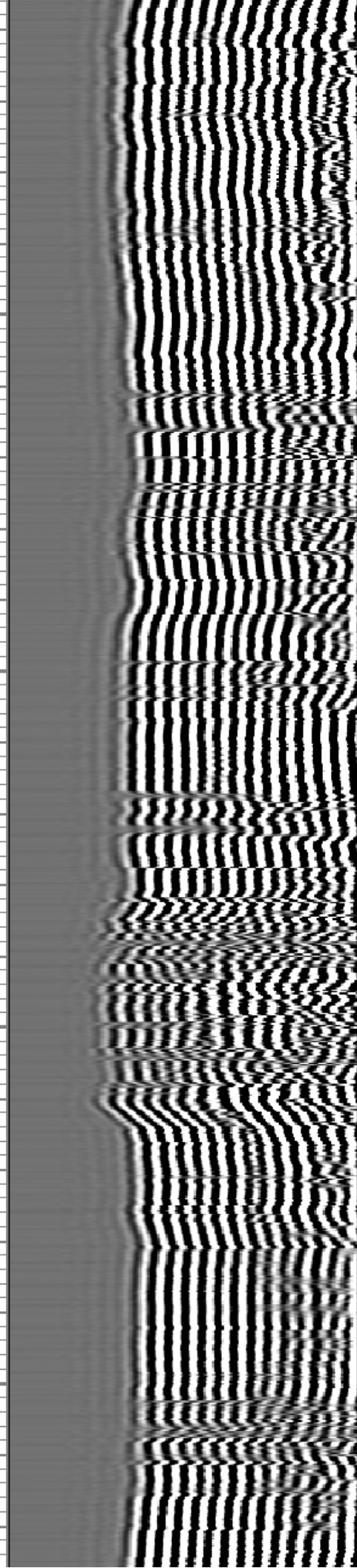
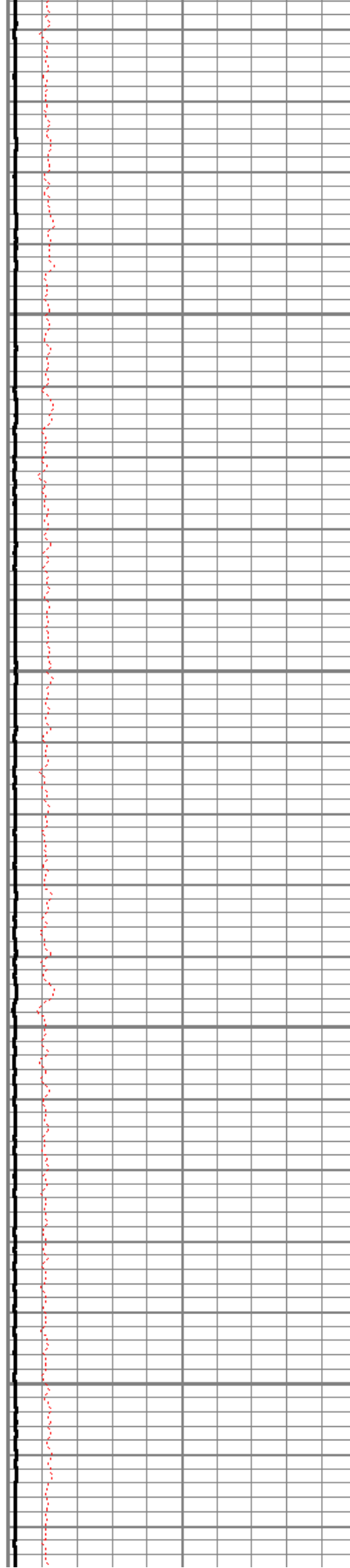


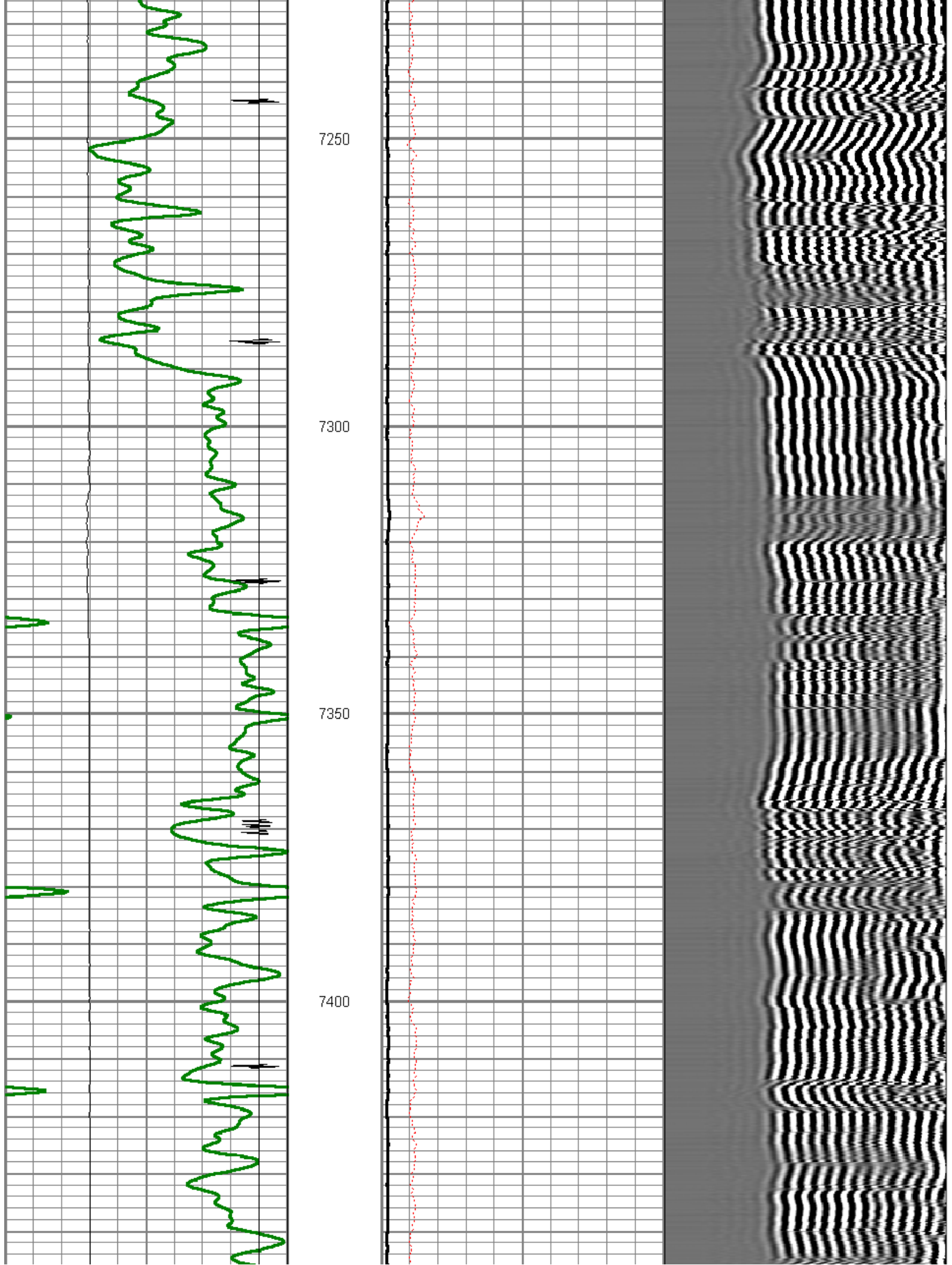
7050

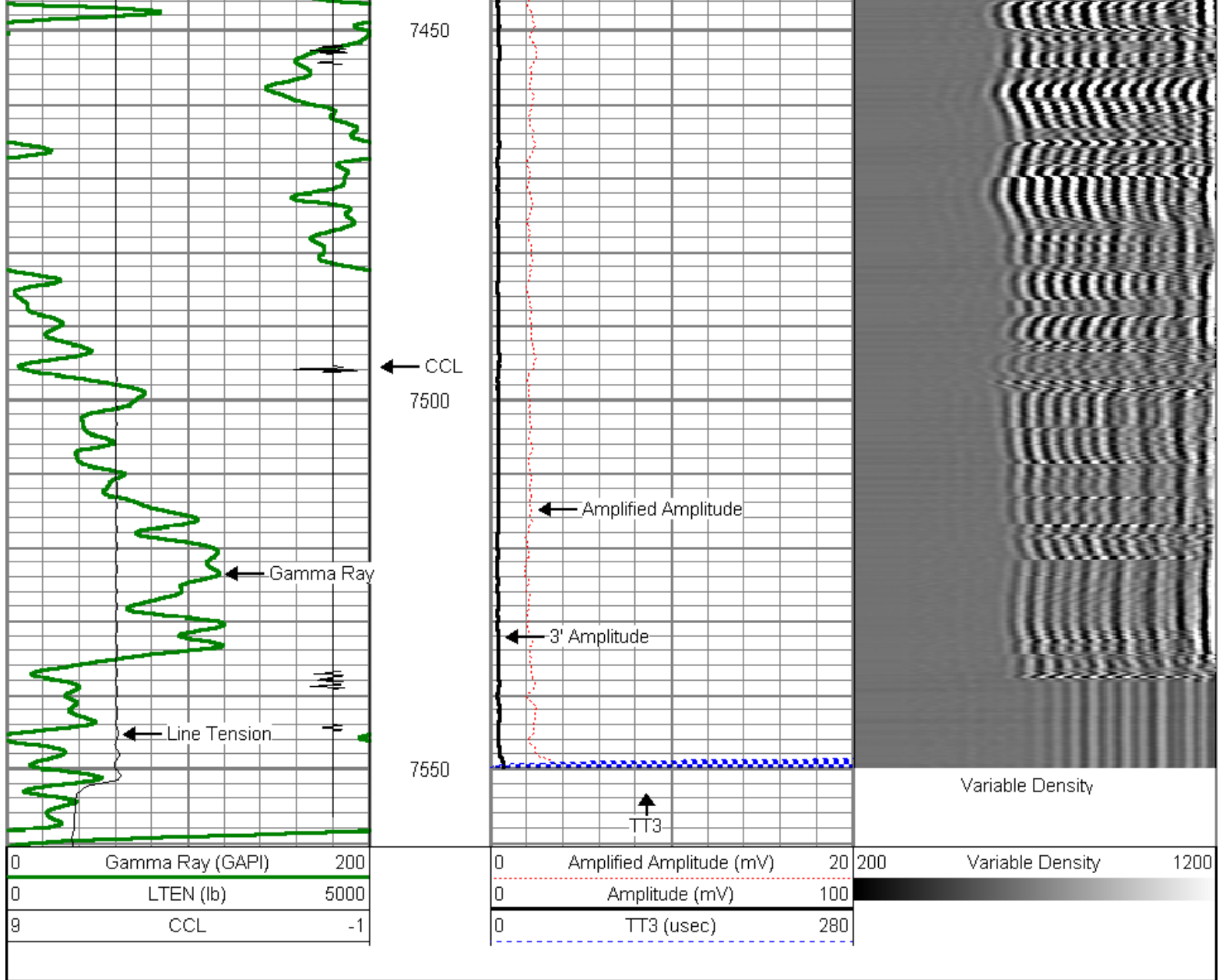
7100

7150

7200







Company ENCANA OIL & GAS (USA) INC
Well POWERS #1
Field WATTENBERG
County WELD
State COLORADO