

# WELLSTAR CORPORATION

## LOCATION DRAWING THREE RIVERS UNIT 41-27H

Pad Location: NENE SECTION 27, T8N, R78W, 6th P.M.



SEC. 22

LOCATION  
REFERENCE POINT  
(41-27H Well Pad)

SE 1/4 SE 1/4

SURFACE USE NOTE:  
Surface use of the well site is  
Agricultural. Vegetation consists  
mainly of Alfalfa and Hay Grasses.

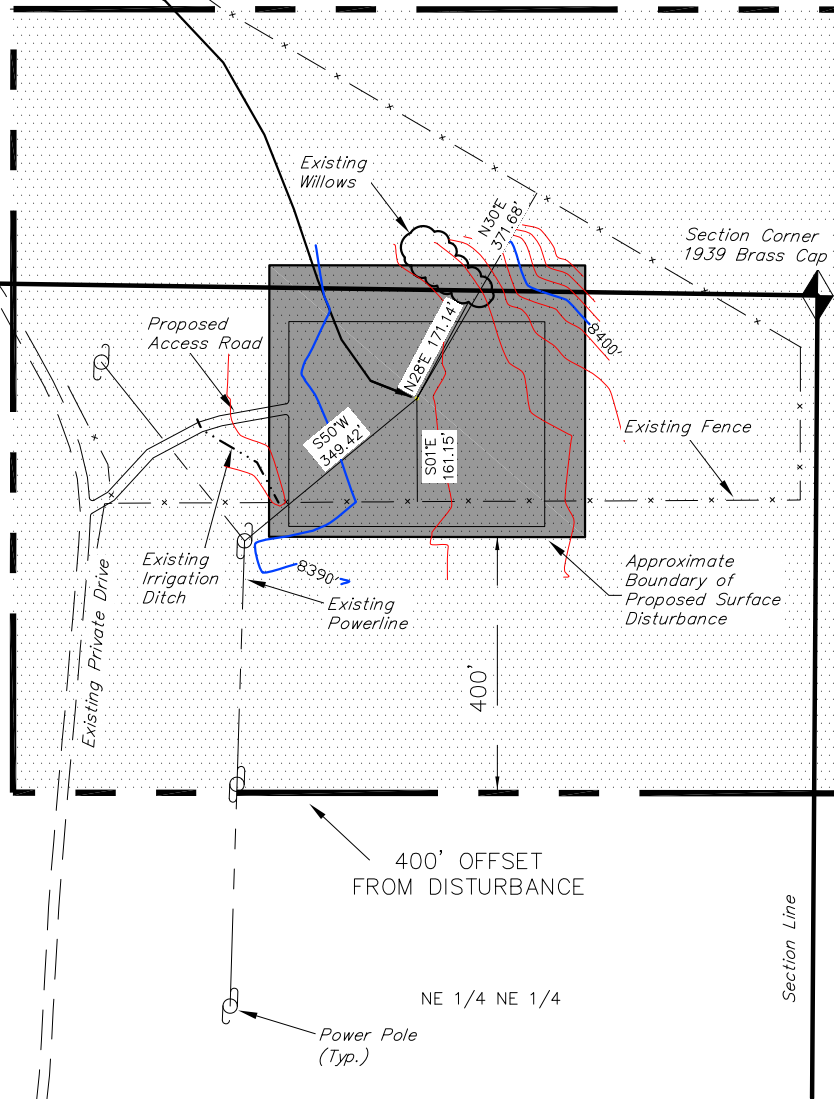
SW 1/4 SE 1/4

Section Line

SEC. 27

NW 1/4 NE 1/4

1/16 Section Line



400' OFFSET  
FROM DISTURBANCE

NE 1/4 NE 1/4

Power Pole  
(Typ.)

1/16 Section Line

### Distances from Well Head

WELL	BUILDING	ABOVE GROUND UTILITY	PUBLIC ROAD	RAILROAD
41-27H	N47°W 1,611'	S50°W 349'	S36°W 3,154'	S07°E 38 MILES



SURVEYED BY: P.H. DATE SURVEYED: 10-20-11  
DRAWN BY: R.B.T. DATE DRAWN: 10-31-11  
SCALE: 1" = 300' REVISED: M.W. 03-06-12

**Tri State**  
Land Surveying, Inc.  
180 NORTH VERNAL AVE. VERNAL, UTAH 84078

(435) 781-2501

SHEET  
1b