

# Encana OIL & GAS (USA) INC.

Well location, DHS3C-23 H23 4101, located as shown in the SE 1/4 NE 1/4 of Section 23, T4S, R101W, 6th P.M., Rio Blanco County, Colorado.

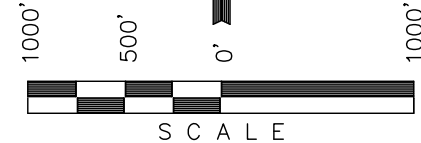
## BASIS OF ELEVATION

BENCH MARK (L427) LOCATED IN THE SW 1/4 OF SECTION 36, T3S, R102W, 6th P.M. TAKEN FROM THE BIG FOUNDATION CREEK QUADRANGLE, COLORADO, 7.5 MINUTE SERIES (TOPO GRAPHICAL MAP) PUBLISHED BY THE UNITED STATES DEPARTMENT OF THE INTERIOR, GEOLOGICAL SURVEY. SAID ELEVATION IS MARKED AS BEING 6451.83 FEET.

## BASIS OF BEARINGS

BASIS OF BEARINGS IS A G.P.S. OBSERVATION.

Sheet 1a of 11



## CERTIFICATE

THIS IS TO CERTIFY THAT THE ABOVE PLAT WAS PREPARED AND LOCATION AS SHOWN WAS STAKED ON THE GROUND FROM FIELD NOTES OF ACTUAL SURVEYS MADE BY ME OR UNDER MY SUPERVISION AND THAT THE SAME ARE TRUE AND CORRECT TO THE BEST OF MY KNOWLEDGE AND BELIEF.

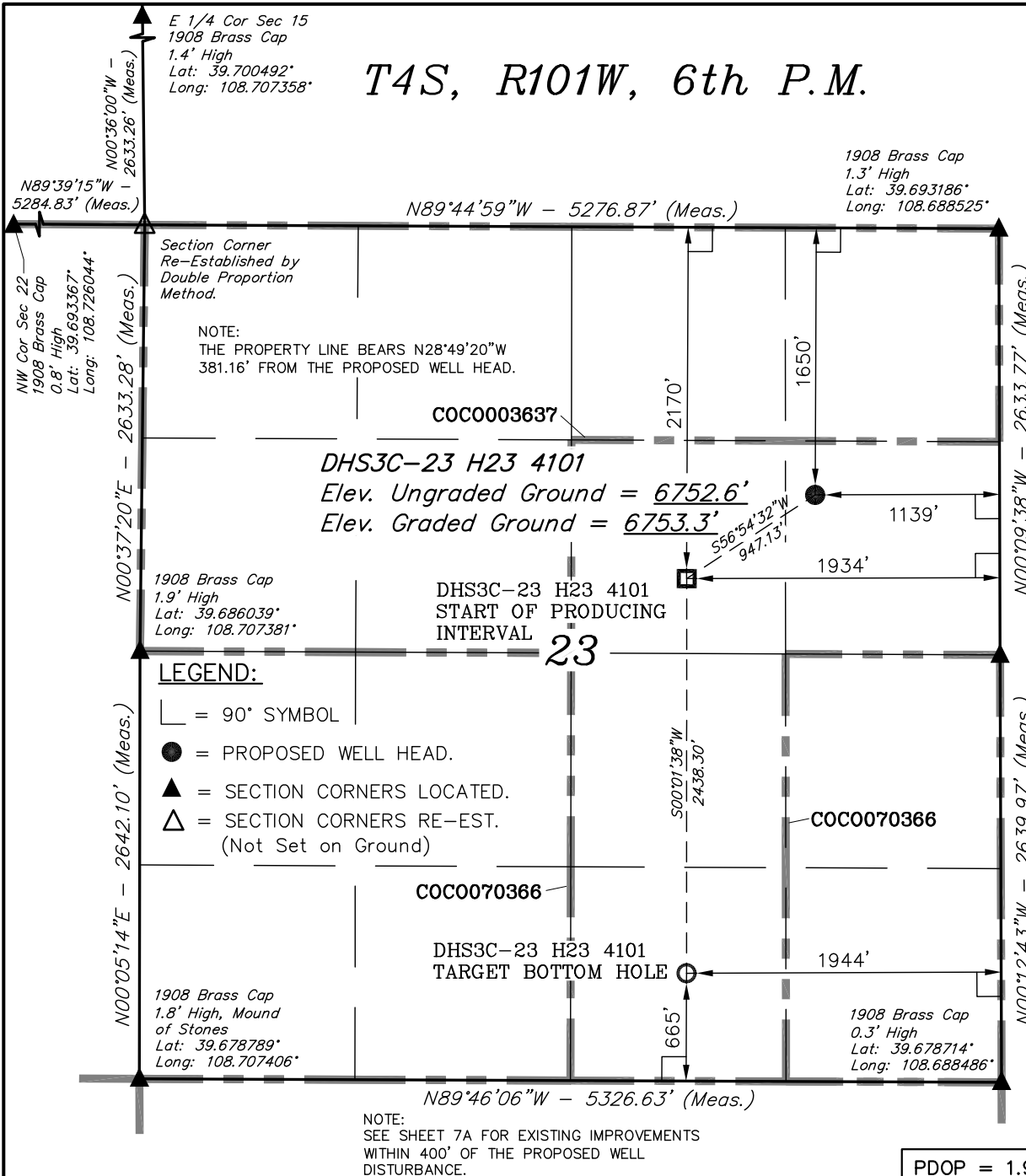
REGISTERED LAND SURVEYOR  
REGISTRATION NO. 17492  
STATE OF COLORADO

Revised: 03-14-12 D.R.B.

**UINTAH ENGINEERING & LAND SURVEYING**  
85 SOUTH 200 EAST - VERNAL, UTAH 84078  
(435) 789-1017

SCALE 1" = 1000'	DATE SURVEYED: 02-07-12	DATE DRAWN: 03-12-12
PARTY B.J. T.M. D.R.B.	REFERENCES G.L.O. PLAT	
WEATHER COLD	FILE Encana OIL & GAS (USA) INC.	

T4S, R101W, 6th P.M.



PDOP = 1.9

NAD 83 (TARGET BOTTOM HOLE)	NAD 83 (START OF PRODUCING INTERVAL)	NAD 83 (SURFACE LOCATION)
LATITUDE = 39°40'50.04" (39.680567)	LATITUDE = 39°41'14.13" (39.687258)	LATITUDE = 39°41'19.23" (39.688675)
LONGITUDE = 108°41'43.43" (108.695397)	LONGITUDE = 108°41'43.38" (108.695383)	LONGITUDE = 108°41'33.22" (108.692561)
NAD 27 (TARGET BOTTOM HOLE)	NAD 27 (START OF PRODUCING INTERVAL)	NAD 27 (SURFACE LOCATION)
LATITUDE = 39°40'50.13" (39.680592)	LATITUDE = 39°41'14.22" (39.687283)	LATITUDE = 39°41'19.32" (39.688700)
LONGITUDE = 108°41'41.07" (108.694742)	LONGITUDE = 108°41'41.02" (108.694728)	LONGITUDE = 108°41'30.87" (108.691908)