

Encana OIL & GAS (USA) INC.

ADDENDUM TO LEGAL PLAT FOR

WELL PAD H23 4101

SECTION 23, T4S, R101W, 6th P.M.

SE 1/4 NE 1/4

60' 30' 0' 60'



SCALE

Sheet 1b of 11



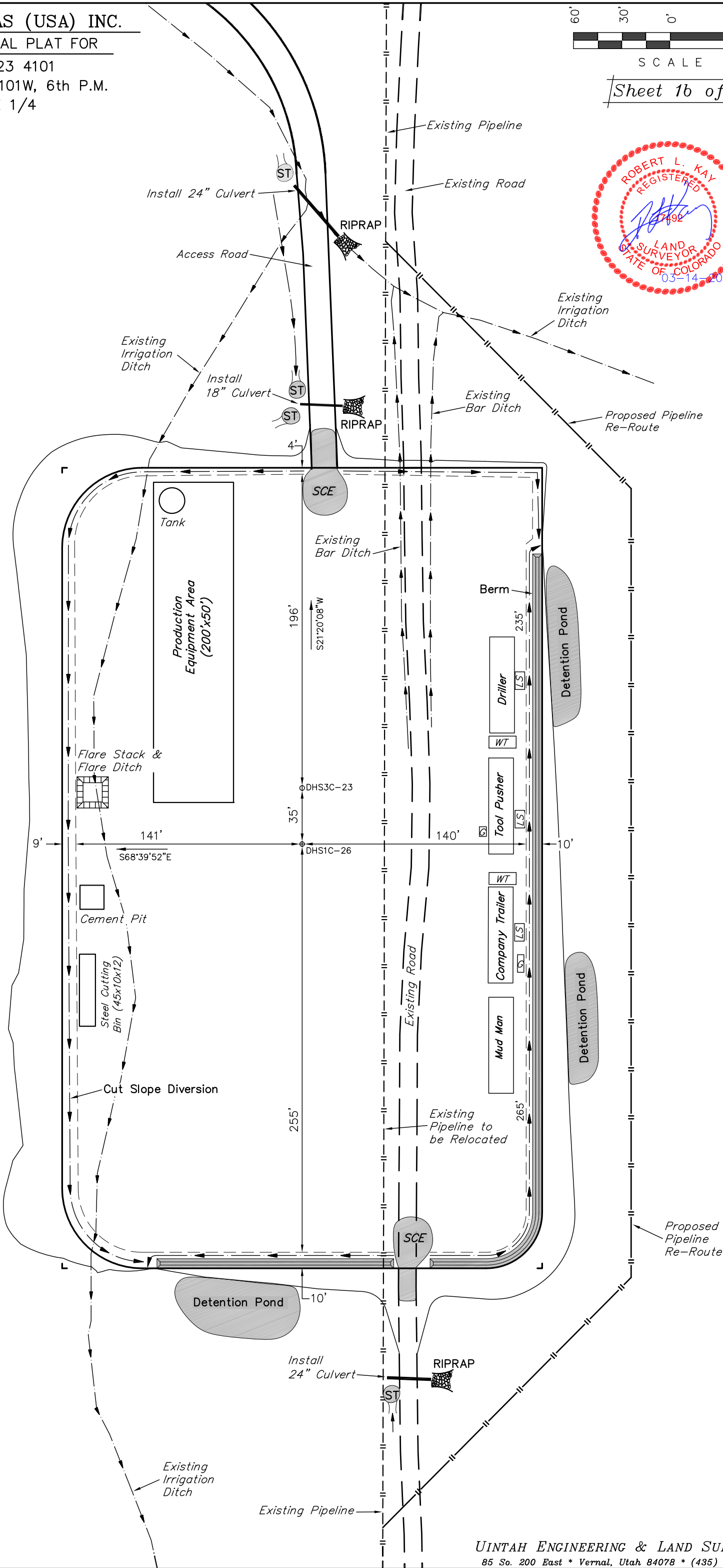
SCALE: 1" = 60'
DATE: 02-20-12
DRAWN BY: D.R.B.
Revised: 03-12-12 D.R.B.



NOTE:
Flare Pit is to
be located a min.
of 100' from the
Well Head.

SWMP LEGEND:
SCE - STABILIZED
CONSTRUCTION
ENTRANCE
ST - SEDIMENT TRAP

SURFACE USE OF LOCATION IS
GRAZING, VEGETATION CONSISTS
MAINLY OF SAGEBRUSH, CEDAR
& NATIVE GRASSES.



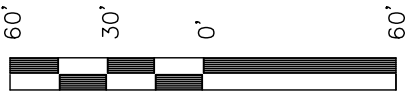
Encana OIL & GAS (USA) INC.

WELL PAD INTERFERENCE PLAT

WELL PAD H23 4101
SECTION 23, T4S, R101W, 6th P.M.
SE 1/4 NE 1/4

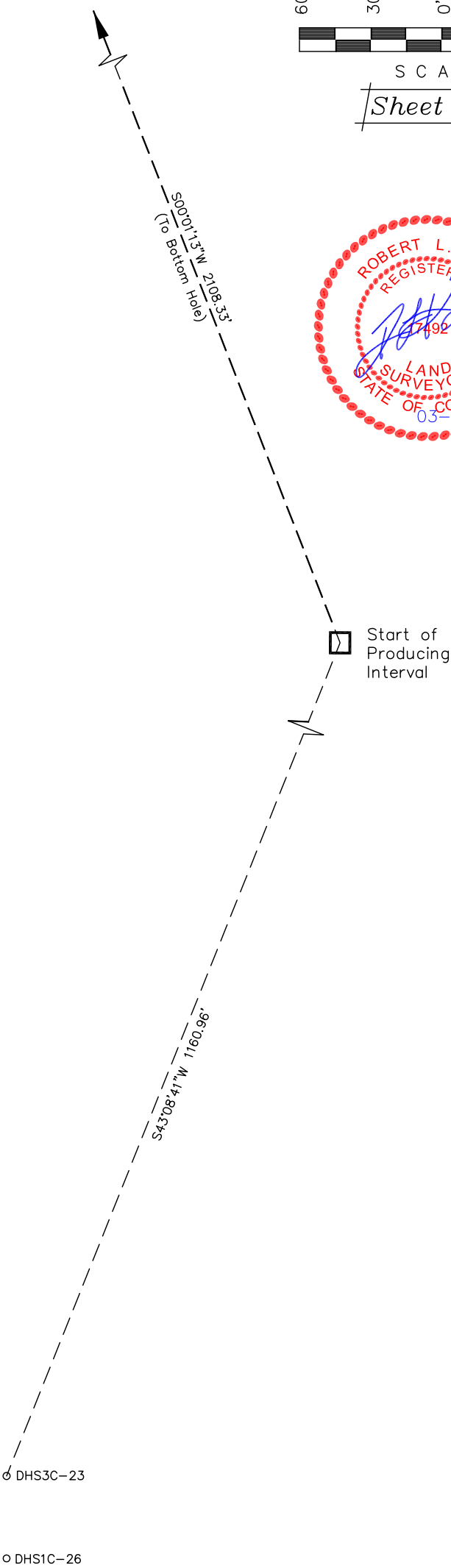


SCALE: 1" = 60'
DATE: 03-12-12
DRAWN BY: D.R.B.



S C A L E

Sheet 2 of 11



Encana OIL & GAS (USA) INC.

CONSTRUCTION LAYOUT FOR

WELL PAD H23 4101
SECTION 23, T4S, R101W, 6th P.M.
SE 1/4 NE 1/4

SCALE: 1" = 60'
DATE: 02-03-12
DRAWN BY: D.R.B.
Revised: 02-06-12 D.R.B.
Revised: 02-07-12 D.R.B.
Revised: 03-12-12 D.R.B.

NOTE:
Stormwater BMP's
to be added to
road re-route.

SWMP LEGEND:

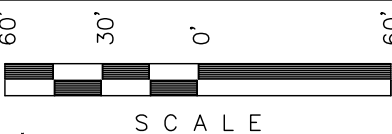
ECB - EROSION CONTROL
BLANKET
LSd - LEVEL SPREADER
SCE - STABILIZED
CONSTRUCTION
ENTRANCE
SedR - SEDIMENT
RESERVOIR
SL - SLASH
ST - SEDIMENT TRAP
T - TERRACING
TB - TOE BERM
VB - VEGETATED BUFFER
W - WATTLE

RUN-ON
PROTECTION

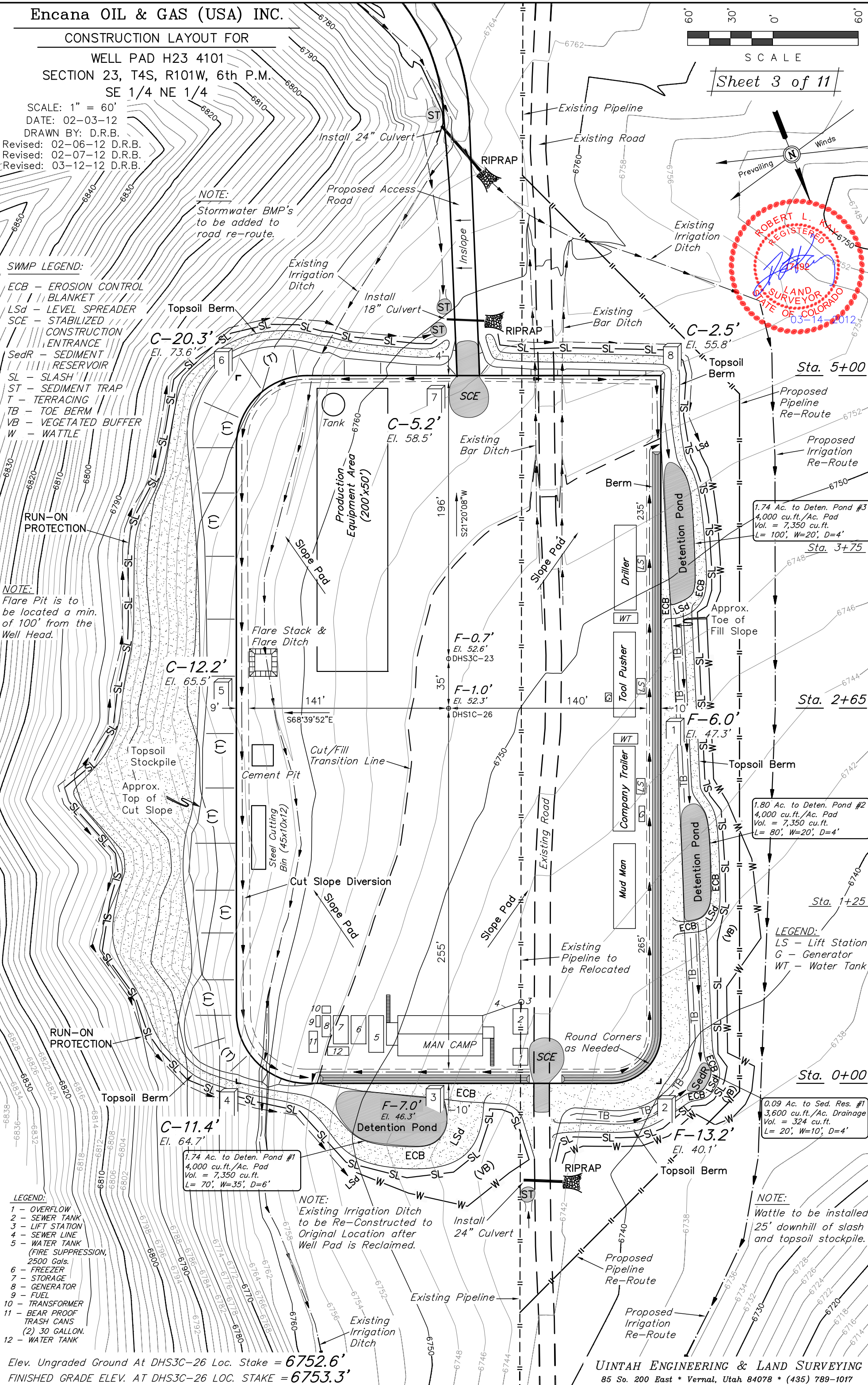
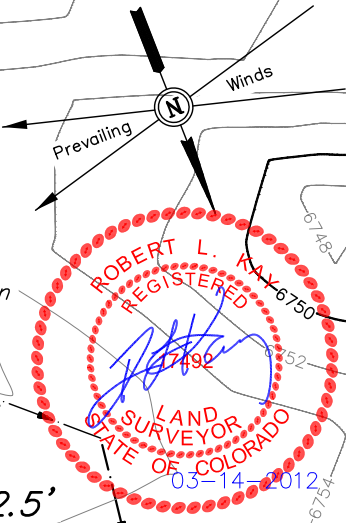
NOTE:
Flare Pit is to
be located a min.
of 100' from the
Well Head.

LEGEND:
1 - OVERFLOW
2 - SEWER TANK
3 - LIFT STATION
4 - SEWER LINE
5 - WATER TANK
(FIRE SUPPRESSION,
2500 Gals.
6 - FREEZER
7 - STORAGE
8 - GENERATOR
9 - FUEL
10 - TRANSFORMER
11 - BEAR PROOF
TRASH CANS
(2) 30 GALLON.
12 - WATER TANK

Elev. Ungraded Ground At DHS3C-26 Loc. Stake = 6752.6'
FINISHED GRADE ELEV. AT DHS3C-26 LOC. STAKE = 6753.3'



Sheet 3 of 11



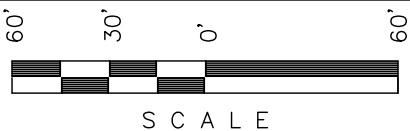
Encana OIL & GAS (USA) INC.

PRE-CONSTRUCTION LAYOUT FOR

WELL PAD H23 4101

SECTION 23, T4S, R101W, 6th P.M.

SE 1/4 NE 1/4

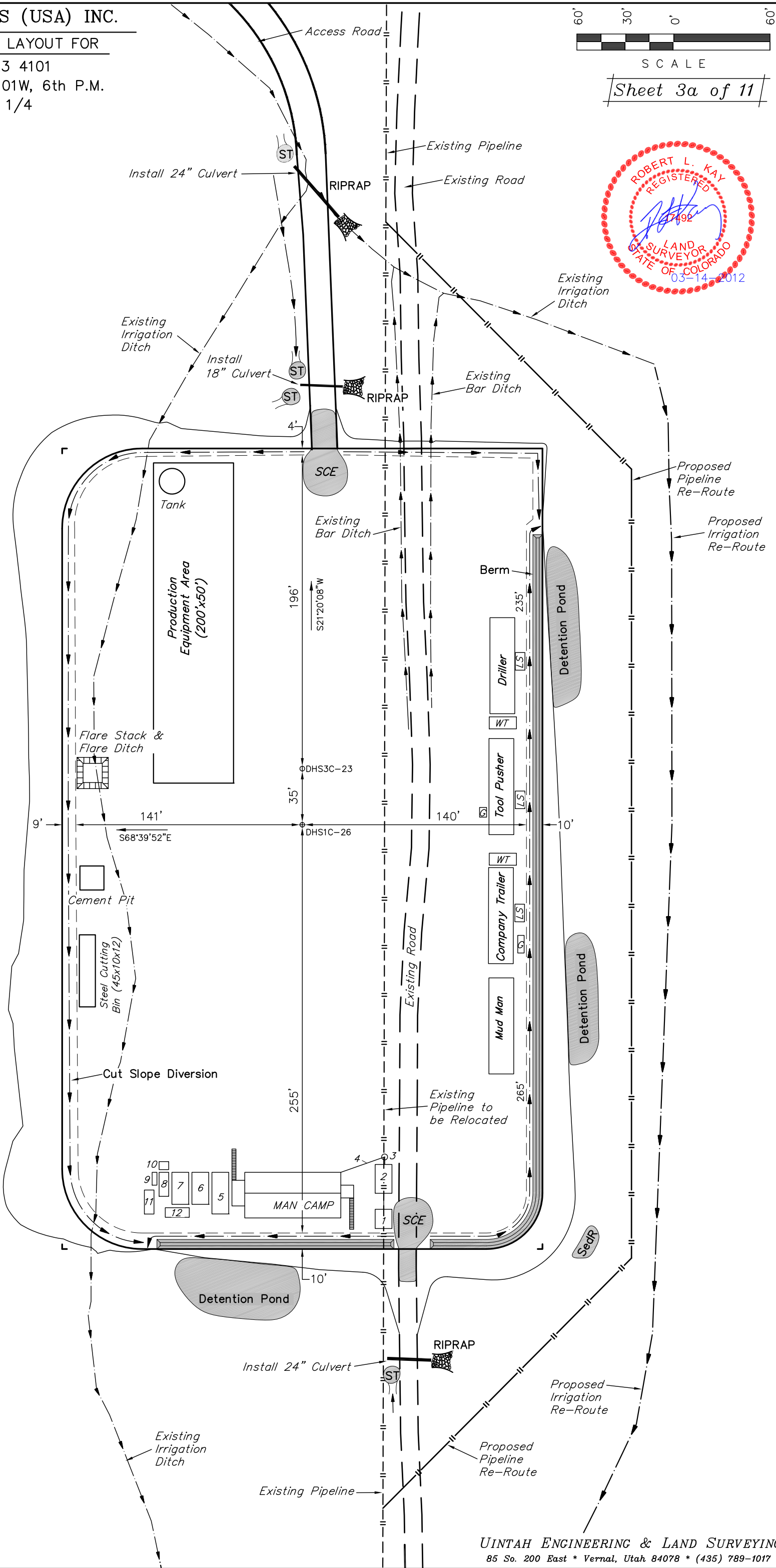


SCALE

Sheet 3a of 11



SCALE: 1" = 60'
DATE: 02-20-12
DRAWN BY: D.R.B.
Revised: 03-12-12 D.R.B.



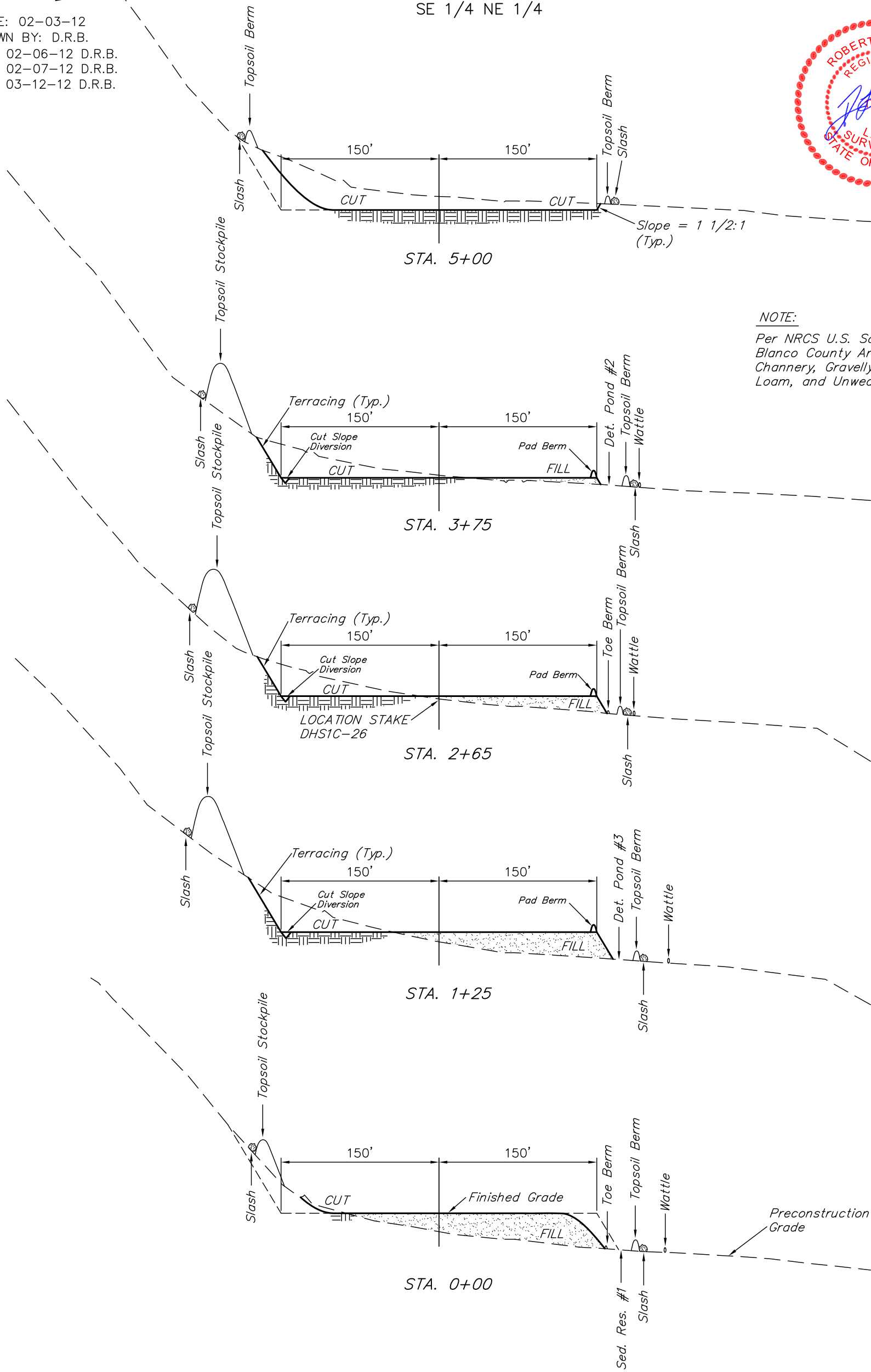
Encana OIL & GAS (USA) INC.
CONSTRUCTION LAYOUT CROSS SECTION FOR

WELL PAD H23 4101
SECTION 23, T4S, R101W, 6th P.M.
SE 1/4 NE 1/4

Sheet 4 of 11

1" = 40'
X-Section
Scale
1" = 100'

DATE: 02-03-12
DRAWN BY: D.R.B.
Revised: 02-06-12 D.R.B.
Revised: 02-07-12 D.R.B.
Revised: 03-12-12 D.R.B.



NOTE:
Per NRCS U.S. Soil Survey for Rio Blanco County Area, CO. Site has Channery, Gravelly & Sandy Clay Loam, and Unweathered Bedrock.

NOTE:
Topsoil should not be Stripped Below Finished Grade on Substructure Area.

* NOTE:
FILL QUANTITY INCLUDES 5% FOR COMPACTION

APPROXIMATE YARDAGES

(6") Topsoil Stripping	=	3,320 Cu. Yds.
Remaining Location	=	16,950 Cu. Yds.
TOTAL CUT	=	20,270 CU.YDS.
FILL	=	16,950 CU.YDS.

EXCESS MATERIAL	=	3,320 Cu. Yds.
Topsoil	=	3,320 Cu. Yds.
EXCESS UNBALANCE (After Interim Rehabilitation)	=	0 Cu. Yds.

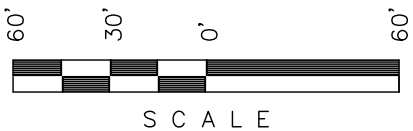
Encana OIL & GAS (USA) INC.

TYPICAL RIG LAYOUT FOR

WELL PAD H23 4101
SECTION 23, T4S, R101W, 6th P.M.
SE 1/4 NE 1/4



SCALE: 1" = 60'
DATE: 02-20-12
DRAWN BY: D.R.B.
Revised: 03-12-12 D.R.B.



SCALE

Sheet 5 of 11

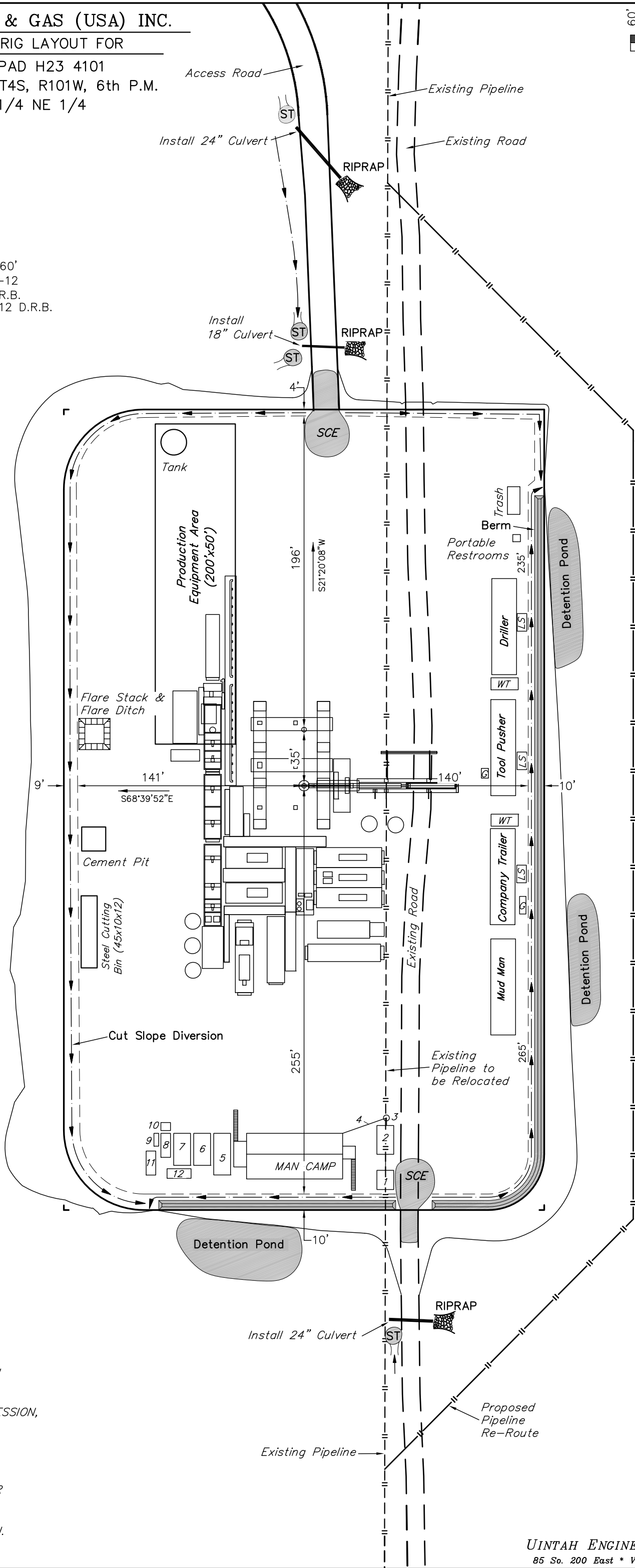


NOTE:
Flare Pit is to
be located a min.
of 100' from the
Well Head.

LEGEND:
LS - Lift Station
G - Generator
WT - Water Tank

SWMP LEGEND:
SCE - STABILIZED
CONSTRUCTION
ENTRANCE
W - WATTLE
ST - SEDIMENT TRAP

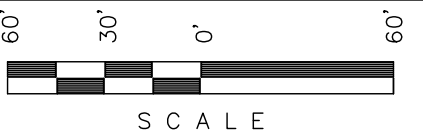
LEGEND:
1 - OVERFLOW
2 - SEWER TANK
3 - LIFT STATION
4 - SEWER LINE
5 - WATER TANK
(FIRE SUPPRESSION,
2500 Gals.
6 - FREEZER
7 - STORAGE
8 - GENERATOR
9 - FUEL
10 - TRANSFORMER
11 - BEAR PROOF
TRASH CANS
(2) 30 GALLON.
12 - WATER TANK



Encana OIL & GAS (USA) INC.

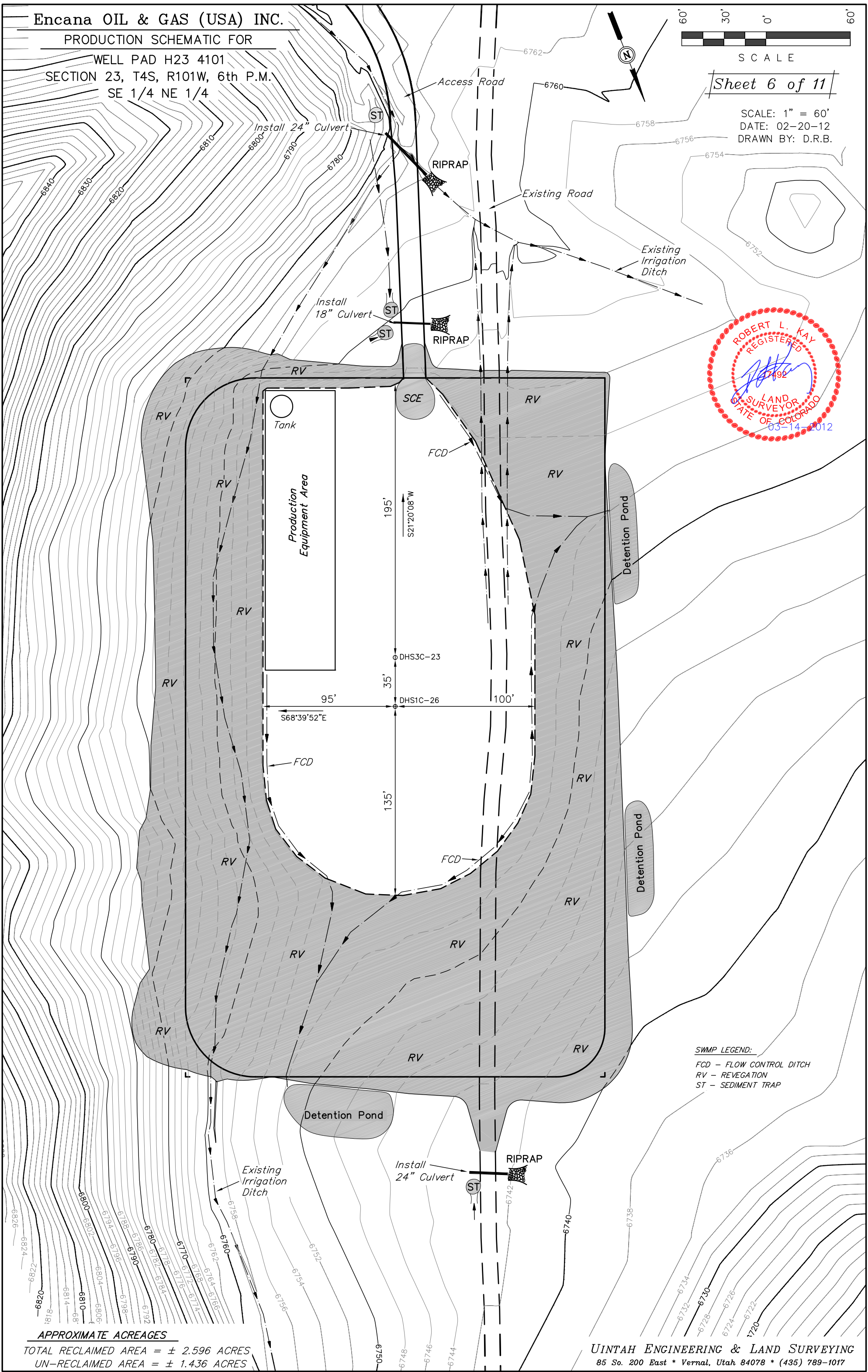
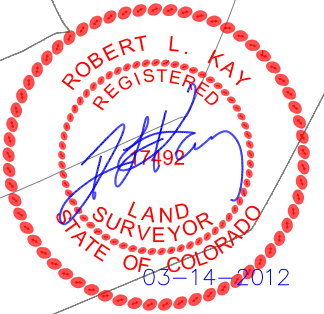
PRODUCTION SCHEMATIC FOR

WELL PAD H23 4101
SECTION 23, T4S, R101W, 6th P.M.
SE 1/4 NE 1/4



SCALE: 1" = 60'
DATE: 02-20-12
DRAWN BY: D.R.B.

Sheet 6 of 11



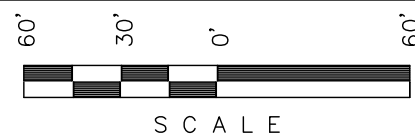
SWMP LEGEND:
FCD - FLOW CONTROL DITCH
RV - REVEGATION
ST - SEDIMENT TRAP

APPROXIMATE ACREAGES
TOTAL RECLAIMED AREA = ± 2.596 ACRES
UN-RECLAIMED AREA = ± 1.436 ACRES

UINTAH ENGINEERING & LAND SURVEYING
85 So. 200 East * Vernal, Utah 84078 * (435) 789-1017

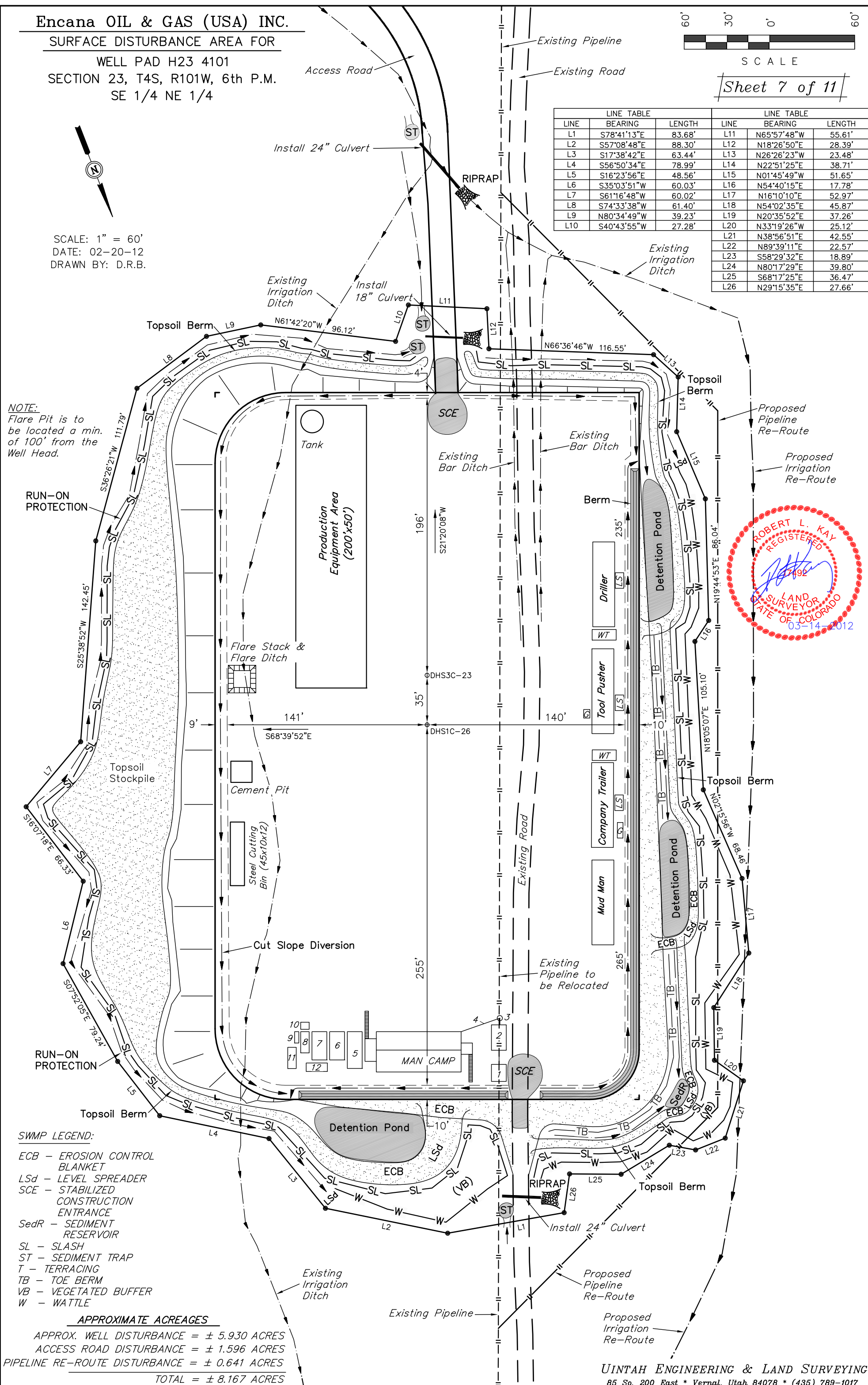
WELL PAD H23 4101
SECTION 23, T4S, R101W, 6th P.M.
SE 1/4 NE 1/4

SCALE: 1" = 60'
DATE: 02-20-12
DRAWN BY: D.R.B.



Sheet 7 of 11

LINE TABLE			LINE TABLE		
LINE	BEARING	LENGTH	LINE	BEARING	LENGTH
L1	S78°41'13"E	83.68'	L11	N65°57'48"W	55.61'
L2	S57°08'48"E	88.30'	L12	N18°26'50"E	28.39'
L3	S17°38'42"E	63.44'	L13	N26°26'23"W	23.48'
L4	S56°50'34"E	78.99'	L14	N22°51'25"E	38.71'
L5	S16°23'56"E	48.56'	L15	N01°45'49"W	51.65'
L6	S35°03'51"W	60.03'	L16	N54°40'15"E	17.78'
L7	S61°16'48"W	60.02'	L17	N16°10'10"E	52.97'
L8	S74°33'38"W	61.40'	L18	N54°02'35"E	45.87'
L9	N80°34'49"W	39.23'	L19	N20°35'52"E	37.26'
L10	S40°43'55"W	27.28'	L20	N33°19'26"W	25.12'
			L21	N38°56'51"E	42.55'
			L22	N89°39'11"E	22.57'
			L23	S58°29'32"E	18.89'
			L24	N80°17'29"E	39.80'
			L25	S68°17'25"E	36.47'
			L26	N29°15'35"E	27.66'



UINTAH ENGINEERING & LAND SURVEYING
85 So. 200 East * Vernal, Utah 84078 * (435) 789-1017