



ULTRA RESOURCES, INC

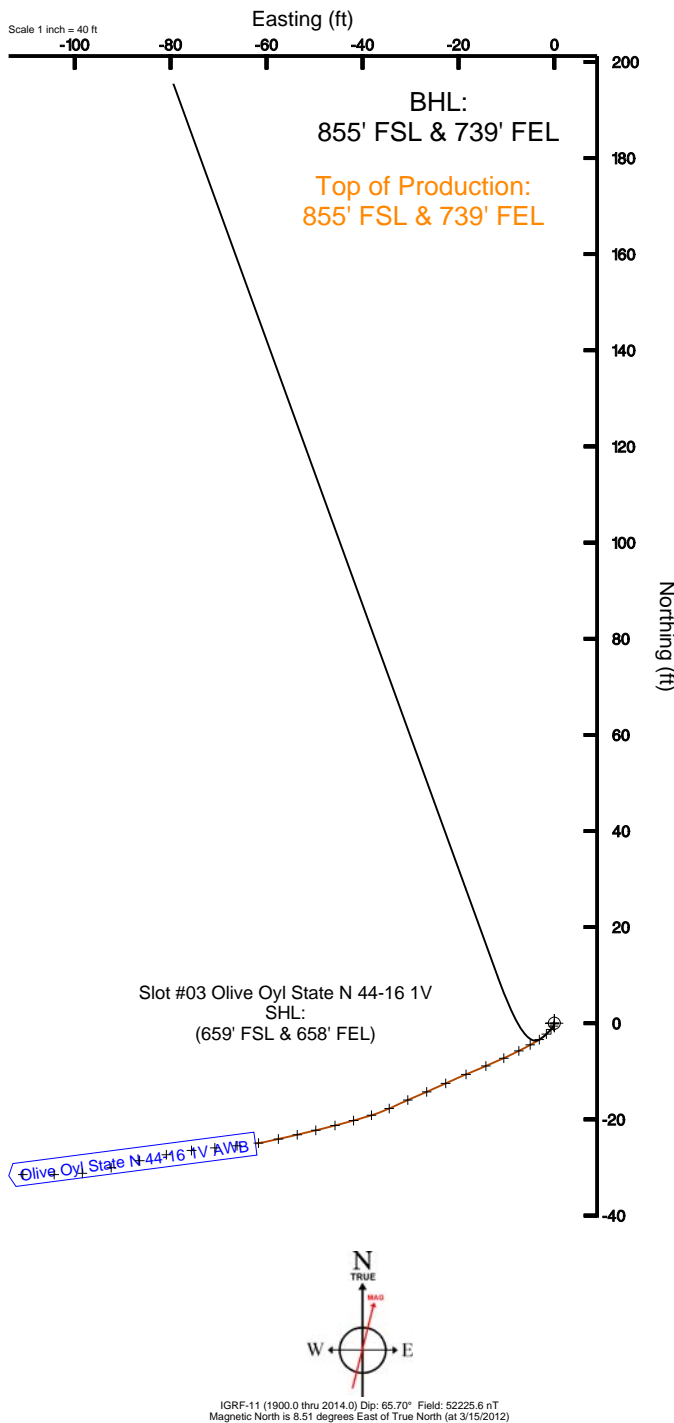
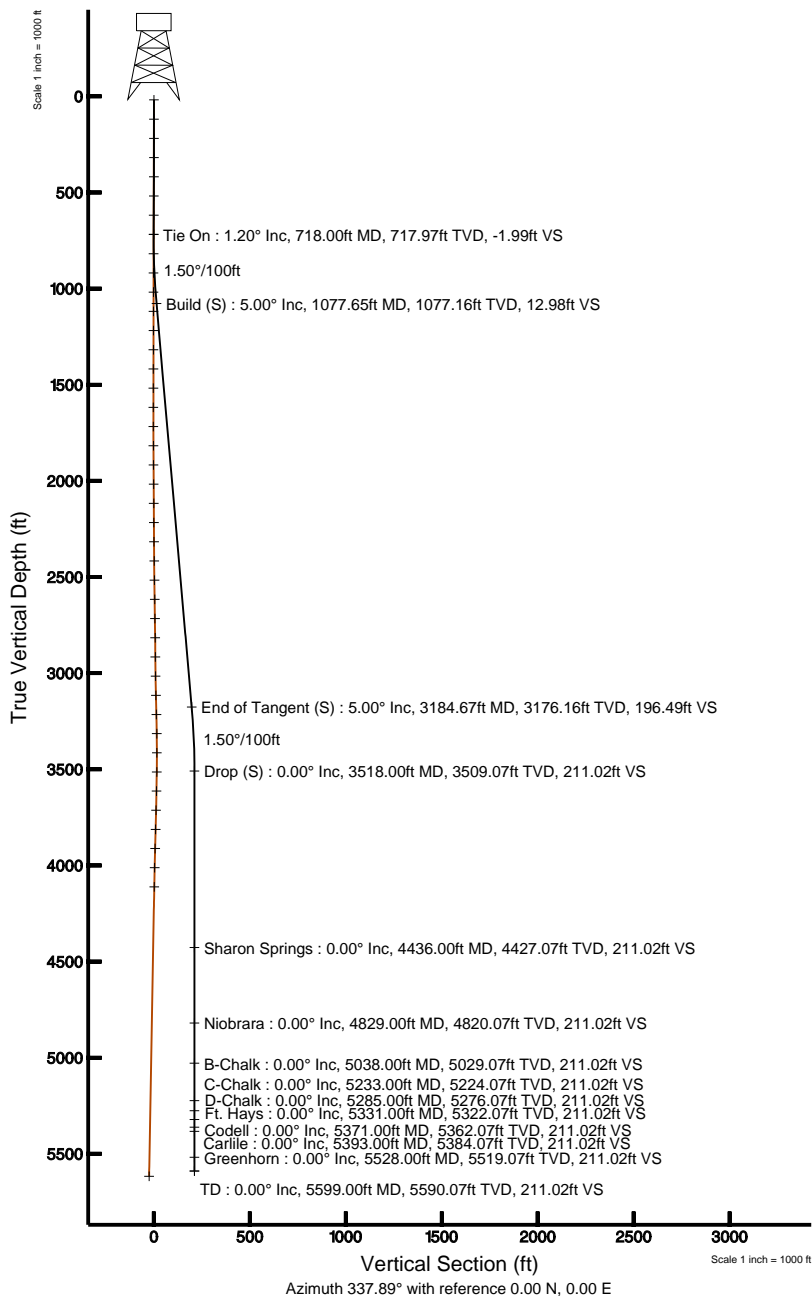
Location: PA Slot: Slot #03 Olive Oyl State N 44-16 1V (659' FSL & 658' FEL)
Field: EL Paso Country (Nad 83) Well: Olive Oyl State N 44-16 1V
Facility: Sec 16-T15S-R64W Wellbore: Olive Oyl State N 44-16 1V PWB

Well Profile Data

Design Comment	MD (ft)	Inc (")	Az (")	TVD (ft)	Local N (ft)	Local E (ft)	DLS (°/100ft)	VS (ft)
Tie On	718.00	1.20	237.160	717.97	-3.42	-3.13	0.32	-1.99
Build (S)	1077.65	5.00	340.000	1077.16	9.27	-11.66	1.50	12.98
End of Tangent (S)	3184.67	5.00	340.000	3176.16	181.84	-74.46	0.00	196.49
Drop (S)	3518.00	0.00	340.000	3509.07	195.49	-79.44	1.50	211.02
End of Tangent	5599.00	0.00	340.000	5590.07	195.49	-79.44	0.00	211.02

Location Information

Facility Name		Grid East (USN)	Grid North (USN)	Latitude	Longitude
Sec 16-T15S-R64W		3289462.214	1330937.522	38°14'17.362"N	104°38'14.281"W
Slot	Local N (ft)	Local E (ft)	Grid East (USN)	Latitude	Longitude
Slot #03 Olive Oyl State N 44-16 1V (659' FSL & 658' FEL)	301.20	-78.16	3289759.087	38°14'20.339"N	104°38'15.268"W
Rig on Slot #01 Olive Oyl State N 44-16 1V (660' FSL & 660' FEL) (RT) to Mud line (Facility: Sec 16-T15S-R64W)					
Mean Sea Level to Mud line (Facility: Sec 16-T15S-R64W)					
Rig on Slot #01 Olive Oyl State N 44-16 1V (660' FSL & 660' FEL) (RT) to Mean Sea Level					
Plot reference wellpath is Olive Oyl State N 44-16 1V ST PWP					
True vertical depths are referenced to Rig on Slot #01 Olive Oyl State N 44-16 1V (660' FSL & 660' FEL) (RT)					
Measured depths are referenced to Rig on Slot #01 Olive Oyl State N 44-16 1V (660' FSL & 660' FEL) (RT)					
Rig on Slot #01 Olive Oyl State N 44-16 1V (660' FSL & 660' FEL) (RT) to Mean Sea Level: 6023 feet					
Mean Sea Level to Mud line (Facility: Sec 16-T15S-R64W): 0 feet					
Coordinates are in feet referenced to Slot					





Planned Wellpath Report

Olive Oyl State N 44-16 1V ST PWP

Page 1 of 4



REFERENCE WELLPATH IDENTIFICATION			
Operator	ULTRA RESOURCES, INC	Slot	Slot #03 Olive Oyl State N 44-16 1V (659' FSL & 658' FEL)
Area	PA	Well	Olive Oyl State N 44-16 1V
Field	EL Paso Country (Nad 83)	Wellbore	Olive Oyl State N 44-16 1V PWB
Facility	Sec.16-T15S-R64W		

REPORT SETUP INFORMATION			
Projection System	NAD83 / Lambert Colorado State Planes, Central Zone (502), US feet	Software System	WellArchitect® 2.0
North Reference	True	User	Ewilliams
Scale	0.999956	Report Generated	3/15/2012 at 2:44:00 PM
Convergence at slot	0.60° East	Database/Source file	UltraWellArchitect/Olive_Oyl_State_N_44-16_1V_PWB.xml

WELLPATH LOCATION						
	Local coordinates		Grid coordinates		Geographic coordinates	
	North[ft]	East[ft]	Easting[USft]	Northing[USft]	Latitude	Longitude
Slot Location	301.20	-78.16	3269759.09	1331237.88	38°44'20.339"N	104°33'15.268"W
Facility Reference Pt			3269840.37	1330937.52	38°44'17.362"N	104°33'14.281"W
Field Reference Pt			3270660.16	1360754.62	38°49'12.000"N	104°33'00.000"W

WELLPATH DATUM			
Calculation method	Minimum curvature	Rig on Slot #01 Olive Oyl State N 44-16 1V (660' FSL & 660' FEL) (RT) to Facility Vertical Datum	6023.00ft
Horizontal Reference Pt	Slot	Rig on Slot #01 Olive Oyl State N 44-16 1V (660' FSL & 660' FEL) (RT) to Mean Sea Level	6023.00ft
Vertical Reference Pt	Rig on Slot #01 Olive Oyl State N 44-16 1V (660' FSL & 660' FEL) (RT)	Facility Vertical Datum to Mud Line (Facility)	0.00ft
MD Reference Pt	Rig on Slot #01 Olive Oyl State N 44-16 1V (660' FSL & 660' FEL) (RT)	Section Origin	N 0.00, E 0.00 ft
Field Vertical Reference	Mean Sea Level	Section Azimuth	337.89°



Planned Wellpath Report

Olive Oyl State N 44-16 1V ST PWP

Page 2 of 4



REFERENCE WELLPATH IDENTIFICATION			
Operator	ULTRA RESOURCES, INC	Slot	Slot #03 Olive Oyl State N 44-16 1V (659' FSL & 658' FEL)
Area	PA	Well	Olive Oyl State N 44-16 1V
Field	EL Paso Country (Nad 83)	Wellbore	Olive Oyl State N 44-16 1V PWB
Facility	Sec.16-T15S-R64W		

WELLPATH DATA (69 stations) † = interpolated/extrapolated station								
MD [ft]	Inclination [°]	Azimuth [°]	TVD [ft]	Vert Sect [ft]	North [ft]	East [ft]	DLS [°/100ft]	Comments
0.00†	0.000	123.480	0.00	0.00	0.00	0.00	0.00	
18.00	0.000	123.480	18.00	0.00	0.00	0.00	0.00	
118.00	0.020	123.480	118.00	-0.01	-0.01	0.01	0.02	
218.00	0.030	339.300	218.00	0.00	0.01	0.02	0.05	
318.00	0.190	181.940	318.00	-0.13	-0.14	0.00	0.22	
418.00	0.400	209.150	418.00	-0.50	-0.61	-0.17	0.25	
518.00	0.600	222.240	517.99	-0.94	-1.30	-0.69	0.23	
618.00	0.960	225.800	617.99	-1.48	-2.27	-1.65	0.36	
718.00	1.200	237.160	717.97	-1.99	-3.42	-3.13	0.32	
818.00†	1.466	304.790	817.95	-1.12	-3.26	-5.06	1.50	
918.00†	2.713	328.945	917.88	2.29	-0.50	-7.33	1.50	
1018.00†	4.131	337.302	1017.70	8.23	4.85	-9.94	1.50	
1077.65	5.000	340.000	1077.16	12.98	9.27	-11.66	1.50	
1118.00†	5.000	340.000	1117.36	16.49	12.58	-12.86	0.00	
1218.00†	5.000	340.000	1216.98	25.20	20.77	-15.84	0.00	
1318.00†	5.000	340.000	1316.59	33.91	28.96	-18.82	0.00	
1418.00†	5.000	340.000	1416.21	42.62	37.15	-21.80	0.00	
1518.00†	5.000	340.000	1515.83	51.33	45.34	-24.78	0.00	
1618.00†	5.000	340.000	1615.45	60.04	53.53	-27.76	0.00	
1718.00†	5.000	340.000	1715.07	68.75	61.72	-30.74	0.00	
1818.00†	5.000	340.000	1814.69	77.46	69.91	-33.73	0.00	
1918.00†	5.000	340.000	1914.31	86.17	78.10	-36.71	0.00	
2018.00†	5.000	340.000	2013.93	94.88	86.29	-39.69	0.00	
2118.00†	5.000	340.000	2113.55	103.59	94.48	-42.67	0.00	
2218.00†	5.000	340.000	2213.17	112.30	102.67	-45.65	0.00	
2318.00†	5.000	340.000	2312.79	121.01	110.86	-48.63	0.00	
2418.00†	5.000	340.000	2412.41	129.72	119.05	-51.61	0.00	
2518.00†	5.000	340.000	2512.03	138.43	127.24	-54.59	0.00	
2618.00†	5.000	340.000	2611.65	147.14	135.43	-57.57	0.00	
2718.00†	5.000	340.000	2711.27	155.85	143.62	-60.55	0.00	



Planned Wellpath Report

Olive Oyl State N 44-16 1V ST PWP

Page 3 of 4



REFERENCE WELLPATH IDENTIFICATION			
Operator	ULTRA RESOURCES, INC	Slot	Slot #03 Olive Oyl State N 44-16 1V (659' FSL & 658' FEL)
Area	PA	Well	Olive Oyl State N 44-16 1V
Field	EL Paso Country (Nad 83)	Wellbore	Olive Oyl State N 44-16 1V PWB
Facility	Sec.16-T15S-R64W		

WELLPATH DATA (69 stations) † = interpolated/extrapolated station								
MD [ft]	Inclination [°]	Azimuth [°]	TVD [ft]	Vert Sect [ft]	North [ft]	East [ft]	DLS [°/100ft]	Comments
2818.00†	5.000	340.000	2810.89	164.56	151.81	-63.53	0.00	
2918.00†	5.000	340.000	2910.51	173.27	160.00	-66.52	0.00	
3018.00†	5.000	340.000	3010.13	181.98	168.19	-69.50	0.00	
3118.00†	5.000	340.000	3109.75	190.69	176.38	-72.48	0.00	
3184.67	5.000	340.000	3176.16	196.49	181.84	-74.46	0.00	
3218.00†	4.500	340.000	3209.38	199.25	184.43	-75.41	1.50	
3318.00†	3.000	340.000	3309.16	205.79	190.58	-77.65	1.50	
3418.00†	1.500	340.000	3409.08	209.71	194.26	-78.99	1.50	
3518.00	0.000	340.000	3509.07	211.02	195.49	-79.44	1.50	
3618.00†	0.000	340.000	3609.07	211.02	195.49	-79.44	0.00	
3718.00†	0.000	340.000	3709.07	211.02	195.49	-79.44	0.00	
3818.00†	0.000	340.000	3809.07	211.02	195.49	-79.44	0.00	
3918.00†	0.000	340.000	3909.07	211.02	195.49	-79.44	0.00	
4018.00†	0.000	340.000	4009.07	211.02	195.49	-79.44	0.00	
4118.00†	0.000	340.000	4109.07	211.02	195.49	-79.44	0.00	
4218.00†	0.000	340.000	4209.07	211.02	195.49	-79.44	0.00	
4318.00†	0.000	340.000	4309.07	211.02	195.49	-79.44	0.00	
4418.00†	0.000	340.000	4409.07	211.02	195.49	-79.44	0.00	
4436.00†	0.000	340.000	4427.07	211.02	195.49	-79.44	0.00	Sharon Springs
4518.00†	0.000	340.000	4509.07	211.02	195.49	-79.44	0.00	
4618.00†	0.000	340.000	4609.07	211.02	195.49	-79.44	0.00	
4718.00†	0.000	340.000	4709.07	211.02	195.49	-79.44	0.00	
4818.00†	0.000	340.000	4809.07	211.02	195.49	-79.44	0.00	
4829.00†	0.000	340.000	4820.07	211.02	195.49	-79.44	0.00	Niobrara
4918.00†	0.000	340.000	4909.07	211.02	195.49	-79.44	0.00	
5018.00†	0.000	340.000	5009.07	211.02	195.49	-79.44	0.00	
5038.00†	0.000	340.000	5029.07	211.02	195.49	-79.44	0.00	B-Chalk
5118.00†	0.000	340.000	5109.07	211.02	195.49	-79.44	0.00	
5218.00†	0.000	340.000	5209.07	211.02	195.49	-79.44	0.00	
5233.00†	0.000	340.000	5224.07	211.02	195.49	-79.44	0.00	C-Chalk



Planned Wellpath Report

Olive Oyl State N 44-16 1V ST PWP

Page 4 of 4



REFERENCE WELLPATH IDENTIFICATION			
Operator	ULTRA RESOURCES, INC	Slot	Slot #03 Olive Oyl State N 44-16 1V (659' FSL & 658' FEL)
Area	PA	Well	Olive Oyl State N 44-16 1V
Field	EL Paso Country (Nad 83)	Wellbore	Olive Oyl State N 44-16 1V PWB
Facility	Sec.16-T15S-R64W		

WELLPATH DATA (69 stations) † = interpolated/extrapolated station								
MD [ft]	Inclination [°]	Azimuth [°]	TVD [ft]	Vert Sect [ft]	North [ft]	East [ft]	DLS [°/100ft]	Comments
5285.00†	0.000	340.000	5276.07	211.02	195.49	-79.44	0.00	D-Chalk
5318.00†	0.000	340.000	5309.07	211.02	195.49	-79.44	0.00	
5331.00†	0.000	340.000	5322.07	211.02	195.49	-79.44	0.00	Ft. Hays
5371.00†	0.000	340.000	5362.07	211.02	195.49	-79.44	0.00	Codell
5393.00†	0.000	340.000	5384.07	211.02	195.49	-79.44	0.00	Carlile
5418.00†	0.000	340.000	5409.07	211.02	195.49	-79.44	0.00	
5518.00†	0.000	340.000	5509.07	211.02	195.49	-79.44	0.00	
5528.00†	0.000	340.000	5519.07	211.02	195.49	-79.44	0.00	Greenhorn
5599.00	0.000	340.000	5590.07	211.02	195.49	-79.44	0.00	TD

SURVEY PROGRAM Ref Wellbore: Olive Oyl State N 44-16 1V PWB Ref Wellpath: Olive Oyl State N 44-16 1V ST PWP				
Start MD [ft]	End MD [ft]	Positional Uncertainty Model	Log Name/Comment	Wellbore
18.00	718.00	Gyrodata standard - Continuous gyro		Olive Oyl State N 44-16 1V AWB
718.00	5599.00	NaviTrak (Standard)		Olive Oyl State N 44-16 1V PWB