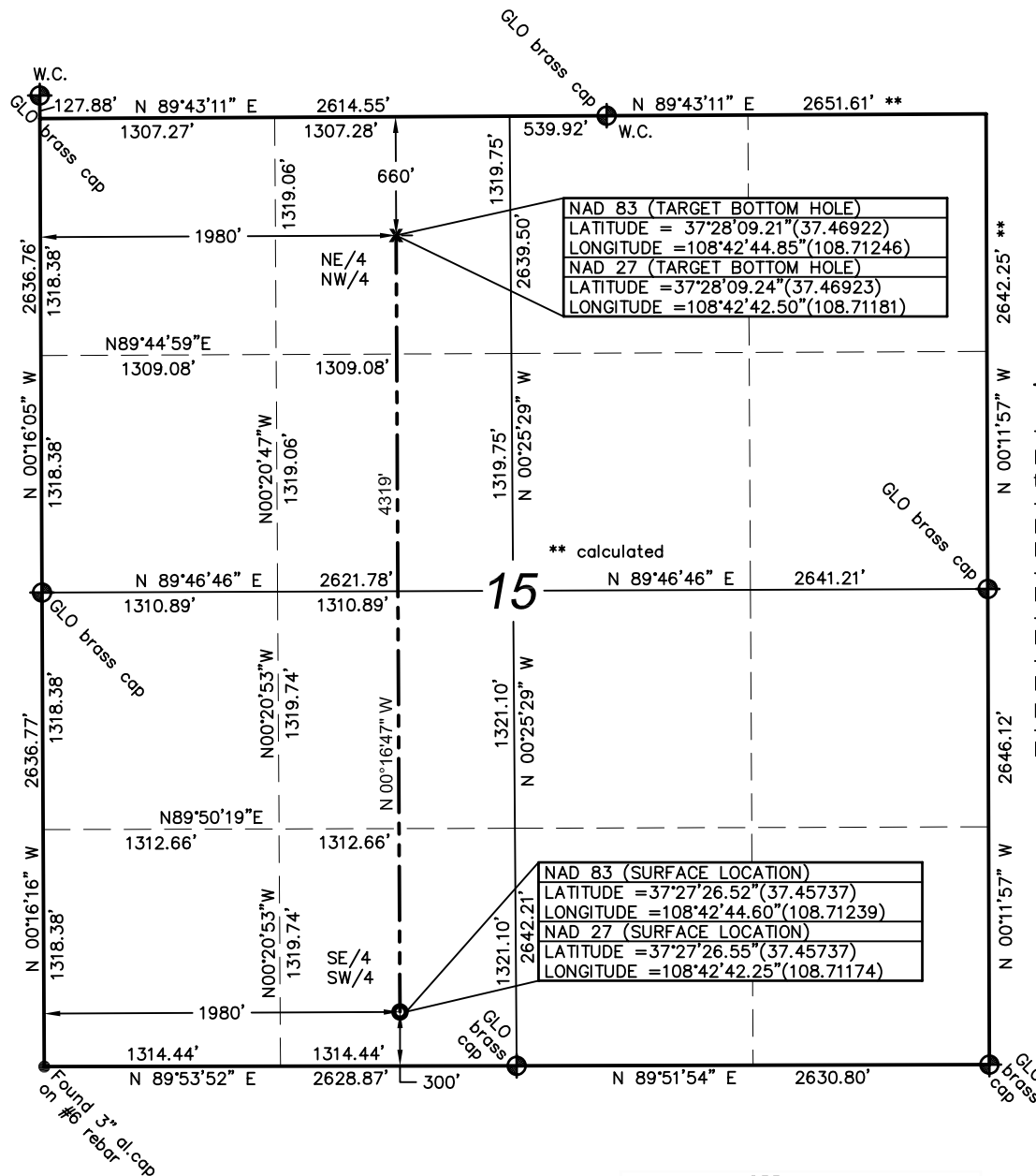

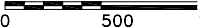




Well Location Plat




Scale in Feet


 Standard monument
 #6 rebar & aluminum cap

Bearings from GPS
true north

Lat/Lon from GPS observations
PDOP: 1.7

Nearest Public Road: 290'

Land use: dry land farming

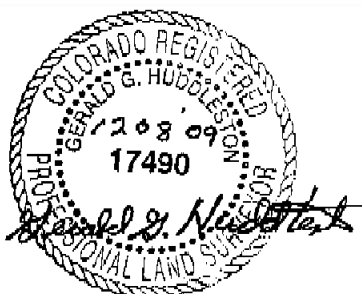
Distances/dimensions are
perpendicular to section lines

Instrument operator: T. Barbee

Bill Barrett Corporation
Gray 14N-15-37-17

300' FSL & 1980' FWL (surface location)
SE/4 SW/4, Section 15, T37N, R17W, NMPM
Montezuma County, Colorado
6691.5' ground. el. (NAVD88)
660' FNL & 1980' FWL (bottom hole)
NE/4 NW/4, Section 15, T37N, R17W, NMPM
Montezuma County, Colorado

Date of Survey: 12/02/09
Date of Plat: 12/08/09



KNOW ALL MEN BY THESE PRESENTS that I, GERALD G. HUDDLESTON, do hereby certify that this plat was prepared from field notes of an actual survey made by me or under my supervision and that the same is true and accurate to the best of my knowledge and belief.

