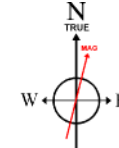


ANADARKO E&P COMPANY LP

Location: COLORADO Slot: SLOT#32 RIVERBEND 31-18 (566°FNL & 519°FEL)
Field: WELD COUNTY (KERR MCGEE) Well: RIVERBEND 31-18
Facility: SEC.13-T1N-R67W Wellbore: RIVERBEND 31-18 PWB

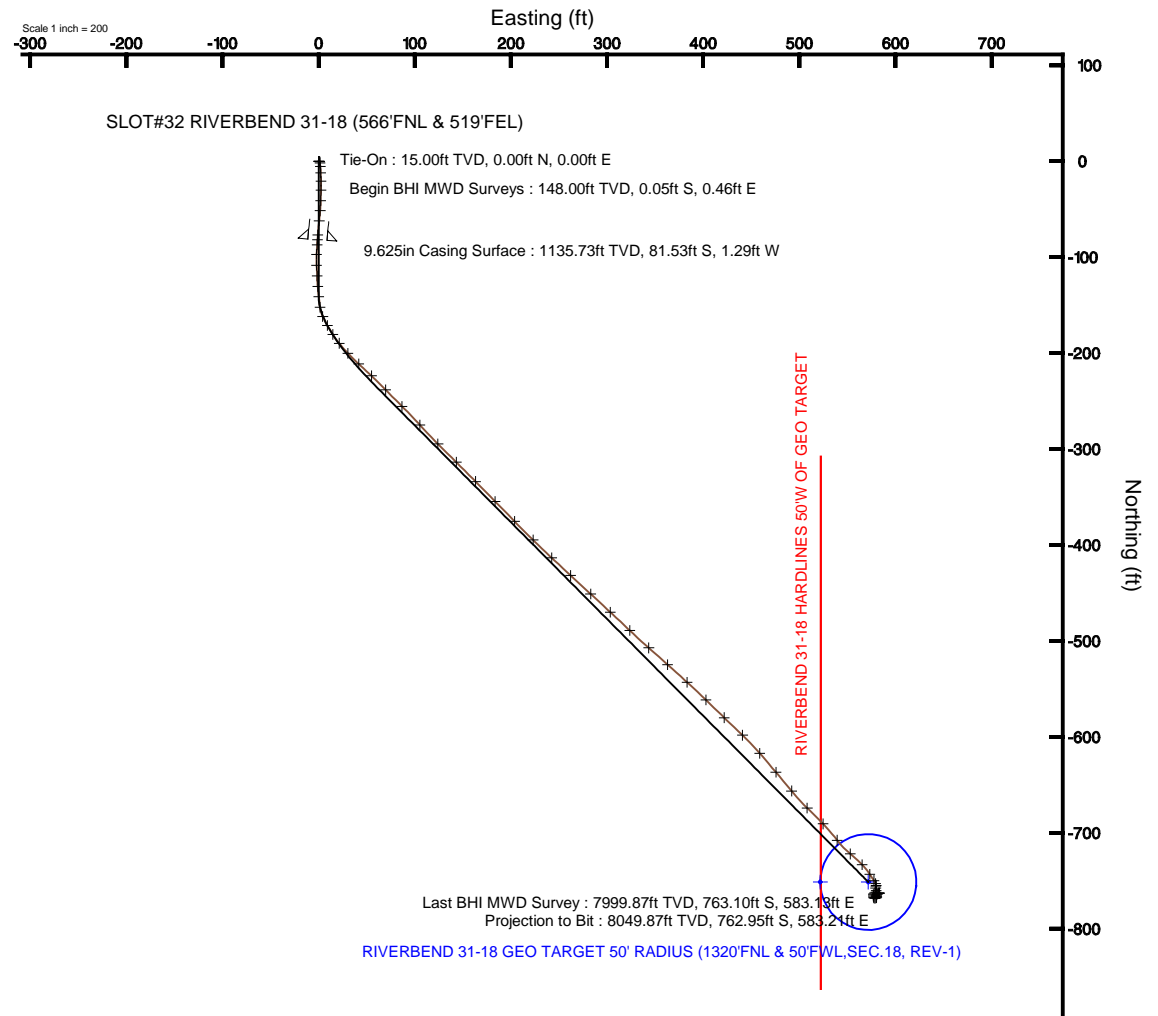
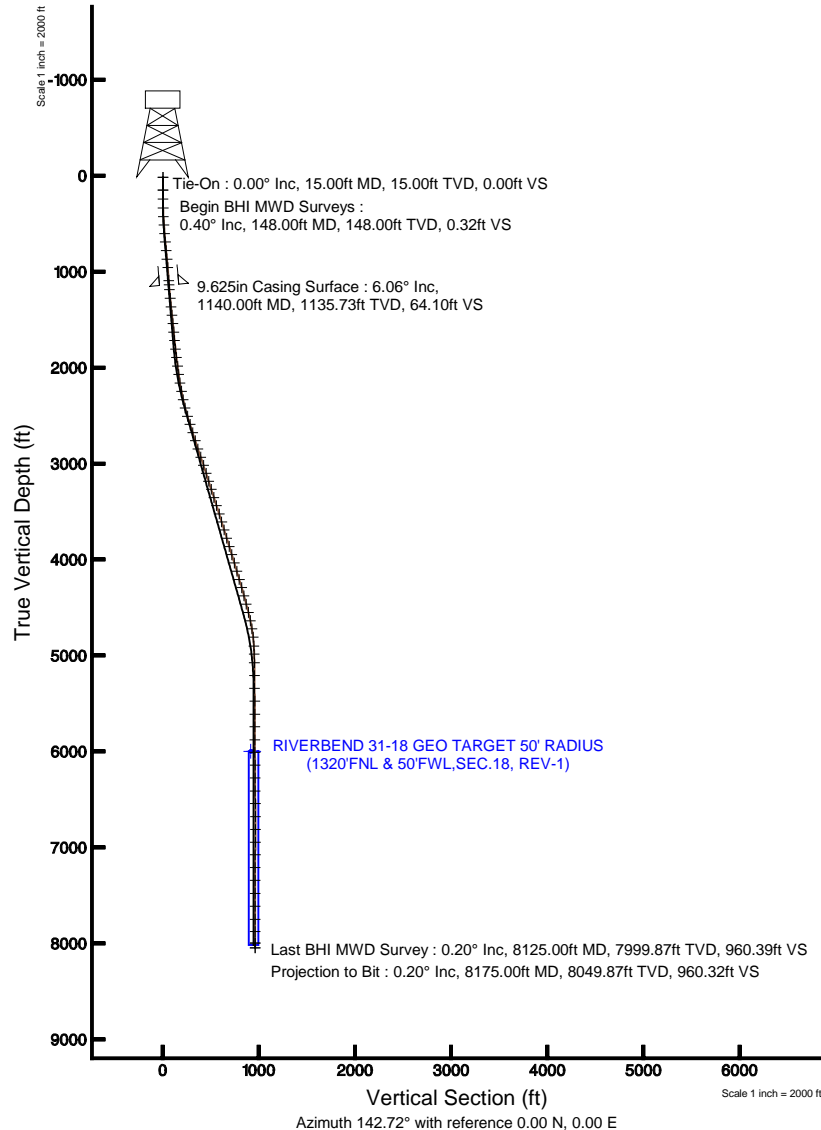


Plot reference wellpath is RIVERBEND 31-18 (REV-B.0) PWP	
True vertical depths are referenced to XTREME 15 (RKB)	Grid System: NAD83 / Lambert Colorado SP, Northern Zone (501), US feet
Measured depths are referenced to XTREME 15 (RKB)	North Reference: True north
XTREME 15 (RKB) to Mean Sea Level: 4928 feet	Scale: True distance
Mean Sea Level to Mud line (At Slot: SLOT#32 RIVERBEND 31-18 (566°FNL & 519°FEL)): 0 feet	Depths are in feet
Coordinates are in feet referenced to Slot	Created by: wlsjef02 on 1/30/2012



BGGM (1945.0 to 2012.0) Dip: 66.76° Field: 52910.2 nT
Magnetic North is 8.78 degrees East of True North (at 10/28/2011)

To correct azimuth from Magnetic to True add 8.78 degrees
For example: if the Magnetic North Azimuth = 90 degs, then the True North Azimuth = 90 + 8.78 = 98.78





Actual Wellpath Report

RIVERBEND 31-18 AWP

Page 1 of 4



REFERENCE WELLPATH IDENTIFICATION

Operator	ANADARKO E&P COMPANY LP	Slot	SLOT#32 RIVERBEND 31-18 (566'FNL & 519'FEL)
Area	COLORADO	Well	RIVERBEND 31-18
Field	WELD COUNTY (KERR MCGEE)	Wellbore	RIVERBEND 31-18 AWB
Facility	SEC.13-T1N-R67W		

REPORT SETUP INFORMATION

Projection System	NAD83 / Lambert Colorado SP, Northern Zone (501), US feet	Software System	WellArchitect® 3.0.2
North Reference	True	User	Wilsjef02
Scale	0.999963	Report Generated	1/30/2012 at 3:22:33 PM
Convergence at slot	0.43° East	Database/Source file	WA_ANADARKO/RIVERBEND_31-18_AWB.xml

WELLPATH LOCATION

	Local coordinates		Grid coordinates		Geographic coordinates	
	North[ft]	East[ft]	Easting[US ft]	Northing[US ft]	Latitude	Longitude
Slot Location	1486.34	1278.97	3187098.03	1264240.57	40°03'24.458"N	104°49'53.746"W
Facility Reference Pt			3185830.27	1262744.76	40°03'09.770"N	104°50'10.194"W
Field Reference Pt			3197771.84	1268891.29	40°04'09.600"N	104°47'36.000"W

WELLPATH DATUM

Calculation method	Minimum curvature	XTREME 15 (RKB) to Facility Vertical Datum	4928.00ft
Horizontal Reference Pt	Slot	XTREME 15 (RKB) to Mean Sea Level	4928.00ft
Vertical Reference Pt	XTREME 15 (RKB)	XTREME 15 (RKB) to Mud Line at Slot (SLOT#32 RIVERBEND 31-18 (566'FNL & 519'FEL))	4928.00ft
MD Reference Pt	XTREME 15 (RKB)	Section Origin	N 0.00, E 0.00 ft
Field Vertical Reference	Mean Sea Level	Section Azimuth	142.72°



Actual Wellpath Report

RIVERBEND 31-18 AWP

Page 2 of 4



REFERENCE WELLPATH IDENTIFICATION			
Operator	ANADARKO E&P COMPANY LP	Slot	SLOT#32 RIVERBEND 31-18 (566'FNL & 519'FEL)
Area	COLORADO	Well	RIVERBEND 31-18
Field	WELD COUNTY (KERR MCGEE)	Wellbore	RIVERBEND 31-18 AWP
Facility	SEC.13-T1N-R67W		

WELLPATH DATA (82 stations) † = interpolated/extrapolated station										
MD [ft]	Inclination [°]	Azimuth [°]	TVD [ft]	Vert Sect [ft]	North [ft]	East [ft]	Latitude	Longitude	DLS [°/100ft]	Comments
0.00†	0.000	96.700	0.00	0.00	0.00	0.00	40°03'24.458"N	104°49'53.746"W	0.00	
15.00	0.000	96.700	15.00	0.00	0.00	0.00	40°03'24.458"N	104°49'53.746"W	0.00	Tie-On
148.00	0.400	96.700	148.00	0.32	-0.05	0.46	40°03'24.457"N	104°49'53.740"W	0.30	Begin BHI MWD Surveys
240.00	0.300	123.400	240.00	0.77	-0.22	0.98	40°03'24.456"N	104°49'53.733"W	0.21	
334.00	1.300	175.100	333.99	1.91	-1.42	1.28	40°03'24.444"N	104°49'53.730"W	1.21	
424.00	3.500	174.100	423.90	5.11	-5.17	1.65	40°03'24.407"N	104°49'53.725"W	2.44	
513.00	5.200	178.600	512.64	10.70	-11.91	2.03	40°03'24.340"N	104°49'53.720"W	1.95	
603.00	5.800	177.600	602.23	17.74	-20.53	2.32	40°03'24.255"N	104°49'53.716"W	0.68	
691.00	6.700	182.200	689.71	25.35	-30.10	2.30	40°03'24.161"N	104°49'53.716"W	1.17	
782.00	6.900	181.400	780.07	33.71	-40.87	1.97	40°03'24.054"N	104°49'53.721"W	0.24	
870.00	6.900	183.900	867.43	41.82	-51.43	1.48	40°03'23.950"N	104°49'53.727"W	0.34	
960.00	6.500	187.100	956.81	49.53	-61.88	0.48	40°03'23.847"N	104°49'53.740"W	0.61	
1095.00	6.200	183.900	1090.99	60.48	-76.73	-0.96	40°03'23.700"N	104°49'53.758"W	0.34	
1192.00	5.900	183.900	1187.45	68.17	-86.93	-1.65	40°03'23.599"N	104°49'53.767"W	0.31	
1282.00	7.100	183.600	1276.87	75.86	-97.10	-2.32	40°03'23.498"N	104°49'53.776"W	1.33	
1372.00	7.300	175.800	1366.16	84.86	-108.35	-2.25	40°03'23.387"N	104°49'53.775"W	1.11	
1459.00	7.300	179.000	1452.45	93.95	-119.39	-1.75	40°03'23.278"N	104°49'53.768"W	0.47	
1547.00	6.900	174.100	1539.78	102.97	-130.24	-1.11	40°03'23.171"N	104°49'53.760"W	0.82	
1636.00	7.300	174.400	1628.10	112.34	-141.19	-0.01	40°03'23.063"N	104°49'53.746"W	0.45	
1726.00	6.600	172.000	1717.43	121.72	-152.00	1.27	40°03'22.956"N	104°49'53.730"W	0.84	
1814.00	6.800	155.800	1804.84	131.21	-161.76	4.11	40°03'22.859"N	104°49'53.693"W	2.15	
1903.00	6.900	149.500	1893.21	141.65	-171.17	8.99	40°03'22.766"N	104°49'53.630"W	0.85	
1993.00	6.900	148.400	1982.56	152.40	-180.43	14.56	40°03'22.675"N	104°49'53.559"W	0.15	
2081.00	8.000	140.300	2069.81	163.78	-189.65	21.24	40°03'22.584"N	104°49'53.473"W	1.73	
2171.00	9.700	137.500	2158.74	177.58	-200.06	30.37	40°03'22.481"N	104°49'53.355"W	1.95	
2259.00	10.900	132.600	2245.32	193.16	-211.16	41.50	40°03'22.371"N	104°49'53.212"W	1.69	
2349.00	12.400	133.300	2333.46	211.07	-223.54	54.80	40°03'22.249"N	104°49'53.041"W	1.67	
2438.00	14.600	136.100	2420.00	231.64	-238.18	69.53	40°03'22.104"N	104°49'52.852"W	2.58	
2527.00	17.100	134.700	2505.61	255.74	-255.47	86.61	40°03'21.933"N	104°49'52.632"W	2.84	
2617.00	17.600	137.500	2591.52	282.40	-274.81	105.21	40°03'21.742"N	104°49'52.393"W	1.08	
2708.00	17.300	135.400	2678.33	309.52	-294.59	124.01	40°03'21.547"N	104°49'52.151"W	0.77	
2796.00	18.400	134.700	2762.09	336.25	-313.67	143.07	40°03'21.358"N	104°49'51.906"W	1.27	
2886.00	18.400	135.400	2847.49	364.40	-333.78	163.14	40°03'21.160"N	104°49'51.648"W	0.25	
2976.00	19.400	135.700	2932.64	393.33	-354.59	183.55	40°03'20.954"N	104°49'51.386"W	1.12	
3065.00	18.500	136.100	3016.81	422.02	-375.34	203.66	40°03'20.749"N	104°49'51.127"W	1.02	
3153.00	17.800	134.300	3100.44	449.20	-394.80	222.97	40°03'20.557"N	104°49'50.879"W	1.02	
3242.00	17.300	132.900	3185.29	475.69	-413.31	242.40	40°03'20.374"N	104°49'50.629"W	0.74	
3330.00	18.600	133.300	3269.01	502.43	-431.84	262.20	40°03'20.190"N	104°49'50.374"W	1.48	
3419.00	18.500	132.600	3353.38	530.33	-451.13	282.93	40°03'20.000"N	104°49'50.108"W	0.27	
3508.00	18.000	132.600	3437.91	557.77	-470.00	303.44	40°03'19.813"N	104°49'49.844"W	0.56	
3599.00	17.700	134.000	3524.53	585.29	-489.12	323.74	40°03'19.624"N	104°49'49.583"W	0.58	
3688.00	17.400	131.200	3609.39	611.70	-507.29	343.49	40°03'19.445"N	104°49'49.329"W	1.01	
3775.00	17.700	132.200	3692.34	637.45	-524.74	363.07	40°03'19.272"N	104°49'49.077"W	0.49	
3865.00	17.700	131.900	3778.08	664.34	-543.07	383.39	40°03'19.091"N	104°49'48.816"W	0.10	
3955.00	17.200	135.000	3863.94	690.96	-561.61	402.98	40°03'18.908"N	104°49'48.564"W	1.17	
4045.00	17.000	133.300	3949.96	717.13	-580.05	421.97	40°03'18.726"N	104°49'48.319"W	0.60	
4136.00	16.800	134.300	4037.03	743.26	-598.36	441.06	40°03'18.545"N	104°49'48.074"W	0.39	
4226.00	16.900	138.600	4123.17	769.17	-617.25	459.02	40°03'18.358"N	104°49'47.843"W	1.39	
4315.00	16.900	140.700	4208.32	795.01	-636.97	475.77	40°03'18.163"N	104°49'47.628"W	0.69	
4404.00	16.300	139.600	4293.62	820.41	-656.49	492.06	40°03'17.970"N	104°49'47.418"W	0.76	
4493.00	15.100	135.000	4379.30	844.37	-674.20	508.35	40°03'17.795"N	104°49'47.209"W	1.94	
4582.00	15.300	135.700	4465.18	867.51	-690.80	524.75	40°03'17.631"N	104°49'46.998"W	0.30	
4671.00	14.200	142.400	4551.26	890.08	-707.85	539.62	40°03'17.463"N	104°49'46.807"W	2.28	
4760.00	11.600	129.100	4638.02	909.70	-722.15	553.22	40°03'17.321"N	104°49'46.632"W	4.42	
4847.00	10.300	136.100	4723.44	925.93	-733.27	565.41	40°03'17.212"N	104°49'46.475"W	2.13	
4934.00	6.900	148.100	4809.45	938.86	-743.32	573.56	40°03'17.112"N	104°49'46.370"W	4.40	
5027.00	2.800	144.900	4902.10	946.70	-749.92	577.82	40°03'17.047"N	104°49'46.315"W	4.42	

5112.00	2.100	158.200	4987.02	950.27	-753.07	579.60	40°03'17.016"N	104°49'46.292"W	1.06
5202.00	0.400	181.100	5077.00	952.11	-754.91	580.20	40°03'16.998"N	104°49'46.285"W	1.93
5336.00	0.500	211.300	5211.00	952.69	-755.88	579.89	40°03'16.988"N	104°49'46.289"W	0.19



Actual Wellpath Report

RIVERBEND 31-18 AWP

Page 3 of 4



REFERENCE WELLPATH IDENTIFICATION			
Operator	ANADARKO E&P COMPANY LP	Slot	SLOT#32 RIVERBEND 31-18 (566'FNL & 519'FEL)
Area	COLORADO	Well	RIVERBEND 31-18
Field	WELD COUNTY (KERR MCGEE)	Wellbore	RIVERBEND 31-18 AWB
Facility	SEC.13-T1N-R67W		

WELLPATH DATA (82 stations)

MD [ft]	Inclination [°]	Azimuth [°]	TVD [ft]	Vert Sect [ft]	North [ft]	East [ft]	Latitude	Longitude	DLS [°/100ft]	Comments
5469.00	1.100	178.600	5343.98	953.93	-757.65	579.62	40°03'16.971"N	104°49'46.292"W	0.55	
5603.00	1.300	159.300	5477.95	956.43	-760.36	580.19	40°03'16.944"N	104°49'46.285"W	0.33	
5738.00	0.800	243.300	5612.94	957.73	-762.22	579.89	40°03'16.926"N	104°49'46.289"W	1.08	
5870.00	0.400	241.600	5744.93	957.49	-762.85	578.66	40°03'16.919"N	104°49'46.304"W	0.30	
6005.00	0.700	224.700	5879.92	957.53	-763.66	577.67	40°03'16.911"N	104°49'46.317"W	0.25	
6137.00	0.400	185.300	6011.92	957.98	-764.69	577.06	40°03'16.901"N	104°49'46.325"W	0.35	
6269.00	0.700	166.300	6143.91	959.06	-765.93	577.20	40°03'16.889"N	104°49'46.323"W	0.26	
6404.00	0.500	178.600	6278.90	960.29	-767.32	577.41	40°03'16.875"N	104°49'46.321"W	0.18	
6538.00	0.400	120.300	6412.90	961.20	-768.14	577.83	40°03'16.867"N	104°49'46.315"W	0.33	
6670.00	0.400	90.000	6544.90	961.91	-768.38	578.69	40°03'16.865"N	104°49'46.304"W	0.16	
6805.00	0.500	69.300	6679.89	962.36	-768.17	579.71	40°03'16.867"N	104°49'46.291"W	0.14	
6940.00	0.300	26.400	6814.89	962.37	-767.64	580.42	40°03'16.872"N	104°49'46.282"W	0.26	
7073.00	0.200	6.000	6947.89	962.05	-767.10	580.60	40°03'16.877"N	104°49'46.280"W	0.10	
7203.00	0.400	342.500	7077.89	961.45	-766.44	580.49	40°03'16.884"N	104°49'46.281"W	0.18	
7337.00	0.300	357.900	7211.88	960.73	-765.65	580.33	40°03'16.892"N	104°49'46.283"W	0.10	
7472.00	0.400	16.900	7346.88	960.16	-764.84	580.46	40°03'16.900"N	104°49'46.281"W	0.11	
7606.00	0.500	53.800	7480.88	959.90	-764.05	581.07	40°03'16.907"N	104°49'46.274"W	0.22	
7740.00	0.300	83.400	7614.88	960.09	-763.66	581.89	40°03'16.911"N	104°49'46.263"W	0.21	
7876.00	0.400	53.500	7750.87	960.28	-763.34	582.62	40°03'16.914"N	104°49'46.254"W	0.15	
8006.00	0.100	169.100	7880.87	960.39	-763.18	583.01	40°03'16.916"N	104°49'46.249"W	0.35	
8125.00	0.200	28.500	7999.87	960.39	-763.10	583.13	40°03'16.917"N	104°49'46.247"W	0.24	Last BHI MWD Survey
8175.00	0.200	28.500	8049.87	960.32	-762.95	583.21	40°03'16.918"N	104°49'46.246"W	0.00	Projection to Bit

HOLE & CASING SECTIONS - Ref Wellbore: RIVERBEND 31-18 AWB Ref Wellpath: RIVERBEND 31-18 AWP

String/Diameter	Start MD [ft]	End MD [ft]	Interval [ft]	Start TVD [ft]	End TVD [ft]	Start N/S [ft]	Start E/W [ft]	End N/S [ft]	End E/W [ft]
12.25in Open Hole	15.00	1140.00	1125.00	15.00	1135.73	0.00	0.00	-81.53	-1.29
9.625in Casing Surface	15.00	1140.00	1125.00	15.00	1135.73	0.00	0.00	-81.53	-1.29
7.875in Open Hole	1140.00	8175.00	7035.00	1135.73	8049.87	-81.53	-1.29	-762.95	583.21

TARGETS

Name	MD [ft]	TVD [ft]	North [ft]	East [ft]	Grid East [US ft]	Grid North [US ft]	Latitude	Longitude	Shape
RIVERBEND 31-18 GEO TARGET 50' RADIUS (1320'FNL & 50'FWL,SEC.18, REV-1)		6000.00	-751.44	571.93	3187675.59	1263493.49	40°03'17.032"N	104°49'46.391"W	circle
RIVERBEND 31-18 HARDLINES 50'W OF GEO TARGET		6000.00	-751.44	521.93	3187625.59	1263493.11	40°03'17.032"N	104°49'47.034"W	point

WELLPATH COMPOSITION - Ref Wellbore: RIVERBEND 31-18 AWB Ref Wellpath: RIVERBEND 31-18 AWP

Start MD [ft]	End MD [ft]	Positional Uncertainty Model	Log Name/Comment	Wellbore
15.00	1095.00	NaviTrak (Standard)	BHI MWD SURVEYS 12 1/4" HOLE <148-1095>	RIVERBEND 31-18 AWB
1095.00	8125.00	NaviTrak (Standard)	BHI MWD SURVEYS 7 7/8" HOLE <1192-8125>	RIVERBEND 31-18 AWB
8125.00	8175.00	Blind Drilling (std)	Projection to bit	RIVERBEND 31-18 AWB



Actual Wellpath Report

RIVERBEND 31-18 AWP

Page 4 of 4



REFERENCE WELLPATH IDENTIFICATION

Operator	ANADARKO E&P COMPANY LP	Slot	SLOT#32 RIVERBEND 31-18 (566'FNL & 519'FEL)
Area	COLORADO	Well	RIVERBEND 31-18
Field	WELD COUNTY (KERR MCGEE)	Wellbore	RIVERBEND 31-18 AWB
Facility	SEC.13-T1N-R67W		

WELLPATH COMMENTS

MD [ft]	Inclination [°]	Azimuth [°]	TVD [ft]	Comment
15.00	0.000	96.700	15.00	Tie-On
148.00	0.400	96.700	148.00	Begin BHI MWD Surveys
8125.00	0.200	28.500	7999.87	Last BHI MWD Survey
8175.00	0.200	28.500	8049.87	Projection to Bit