

SYNERGY RESOURCES CORPORATION
20203 HIGHWAY 60
PLATTEVILLE, Colorado

SRC Pratt
SRC Pratt 31-29D

Ensign/33

Post Job Summary

Cement Production Casing

Date Prepared: 5/18/11
Version: 1

Service Supervisor: ROSALES, MATTHEW

Submitted by: FRY, DOMINIK

HALLIBURTON

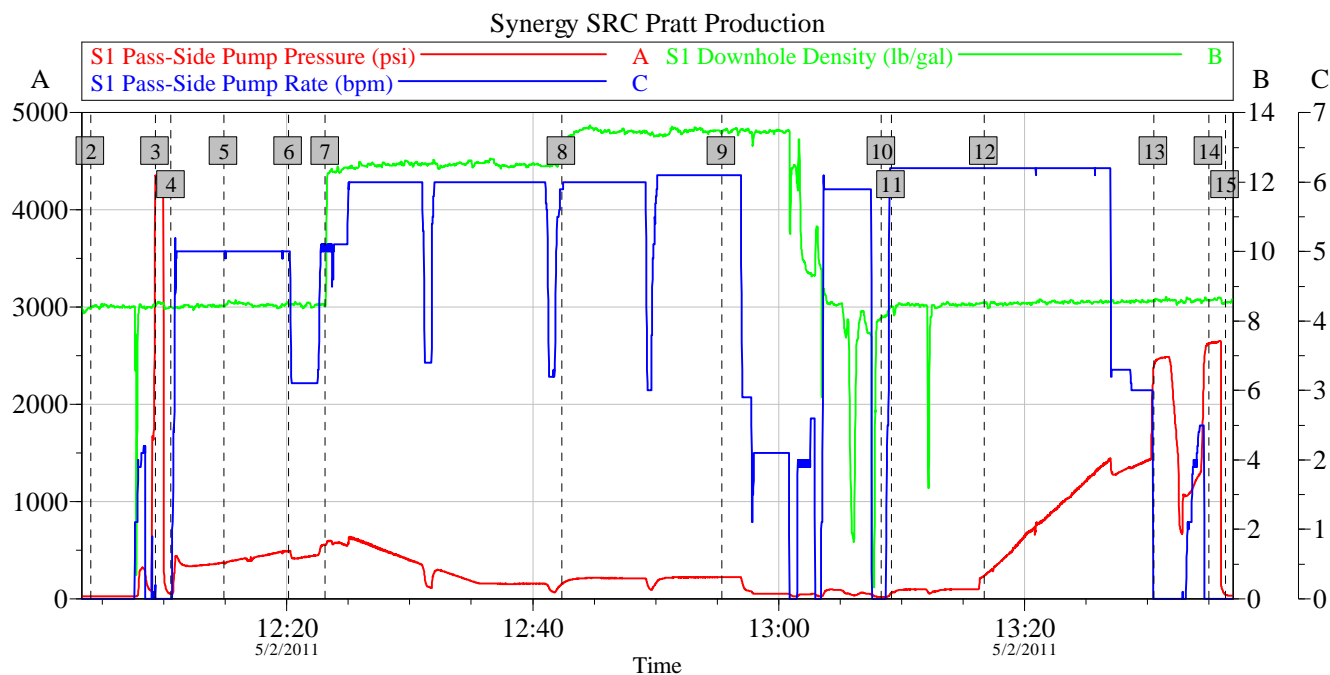
HALLIBURTON

Pumping Schedule

Stage /Plug #	Fluid #	Fluid Type	Fluid Name	Surface Density lbm/gal	Avg Rate bbl/min	Surface Volume	Downhole Volume
1	1	Spacer	Water Spacer	8.33	5.00	20.0 bbl	20.0 bbl
1	2	Spacer	MUD FLUSH III	8.40	5.00	24.0 bbl	24.0 bbl
1	3	Cement Slurry	EcconoCem B2 12.5#	12.50	6.00	340.0 sacks	340.0 sacks
1	4	Cement Slurry	13.5# Fraccem	13.50	5.00	300.0 sacks	300.0 sacks
1	5	Spacer	ClaFix III Water Displacement	8.33	7.00	15.0 Gal	15.0 Gal

HALLIBURTON

Data Acquisition



Global Event Log

2 Start Job	12:04:02	3 Test Lines	12:09:17	4 Water Spacer	12:10:35
5 Mud Flush	12:14:54	6 Water Spacer	12:20:08	7 Pump Lead Cement 12.5#/gal	12:23:08
8 Pump Tail Cement 13.5#/gal	12:42:22	9 Shut Down/Clean Lines	12:55:22	10 Drop Top Plug	13:08:23
11 Pump Displacement	13:09:10	12 Displ Reached Cmmt	13:16:43	13 Bump Plug	13:30:32
14 Shut In Well	13:34:59	15 End Job	13:36:21		

Customer:
Well Description:

Job Date: 02-May-2011
UWI:

Sales Order #: 8132492

OptiCem v6.4.10
18-May-11 15:32

Service Supervisor Reports

Job Log

Date/Time	Chart #	Activity Code	Pump Rate	Cum Vol	Pump	Pressure (psig)	Comments
05/02/2011 05:30		Call Out					
05/02/2011 07:50		Pre-Convoy Safety Meeting					SAFETY SEND OFF, JOURNEY MANAGMENT
05/02/2011 08:00		Depart from Service Center or Other Site					
05/02/2011 08:30		Arrive At Loc					RIG IS RUNNING CASING
05/02/2011 08:35		Assessment Of Location Safety Meeting					HAZARD HUNT, JSA, MEET AND GREET
05/02/2011 10:50		Other					SPOT TRUCKS
05/02/2011 10:55		Pre-Rig Up Safety Meeting					IRON LAYOUT, PINCH POINTS, HOUSEKEEPING, LINE OF FIRE, EYES ON TASK, TEAMWORK
05/02/2011 11:05		Rig-Up Equipment					
05/02/2011 11:50		Rig-Up Completed					
05/02/2011 11:55		Pre-Job Safety Meeting					PUMP SCHEDULE, LOCATION HAZARDS, JOB HAZARDS, LOCATION OF EMERGENCY STATIONS, OFF LIMIT AREAS, MUSTER POINT
05/02/2011 12:09		Start Job					
05/02/2011 12:09		Pump Water	2				FILL LINES
05/02/2011 12:09		Test Lines	0.5			4133.0	
05/02/2011 12:10		Pump Spacer 1	5			367.0	WATER SPACER
05/02/2011 12:14		Pump Spacer 2	5			403.0	MUD FLUSH
05/02/2011 12:20		Pump Spacer 1	5			520.0	WATER SPACER
05/02/2011 12:24		Pump Lead Cement	6			595.0	12.5#/GAL ECONOCCEM MIXED WITH WATER PROVIDED BY RIG
05/02/2011 12:42		Pump Tail Cement	6			250.0	13.5#/GAL FRACCCEM MIXED WITH WATER PROVIDED BY RIG
05/02/2011 12:55		Shutdown					CLEAN LINES
05/02/2011 13:08		Drop Top Plug					
05/02/2011 13:09		Pump Displacement	6			1432.0	
05/02/2011 13:30		Bump Plug	2			2389.0	
05/02/2011 13:34		Check Floats					FLOATS DID NOT HOLD REBUMPED PLUG SHUTIN WELL
05/02/2011 13:36		End Job					
05/02/2011 13:45		Pre-Rig Down Safety Meeting					IRON LAYOUT, PINCH POINTS, HOUSEKEEPING, LINE OF FIRE, EYES ON TASK, TEAMWORK
05/02/2011 13:50		Rig-Down Equipment					
05/02/2011 14:45		Rig-Down Completed					
05/02/2011 14:55		Pre-Convoy Safety Meeting					SAFETY SEND OFF, JOURNEY MANAGMENT
05/02/2011 15:00		Depart Location for Service Center or Other Site					

HALLIBURTON

The Road to Excellence Starts with Safety

Sold To #: 359915		Ship To #: 2850995		Quote #:		Sales Order #: 8132492	
Customer: SYNERGY RESOURCES CORPORATION				Customer Rep:			
Well Name: SRC Pratt			Well #: 31-29D			API/UWI #:	
Field: WATTENBERG		City (SAP): DACONO		County/Parish: Weld		State: Colorado	
Contractor: Ensign			Rig/Platform Name/Num: 33				
Job Purpose: Cement Production Casing							
Well Type: Development Well			Job Type: Cement Production Casing				
Sales Person: FLING, MATTHEW			Srvc Supervisor: ROSALES, MATTHEW			MBU ID Emp #: 392095	

Job Personnel

HES Emp Name	Exp Hrs	Emp #	HES Emp Name	Exp Hrs	Emp #	HES Emp Name	Exp Hrs	Emp #
BARNES, BRIAN L		485204	ROSALES, MATTHEW John		392095	TAYLOR, JOSHUA Lin		485939
WARD, SAMUEL Winfield		478713						

Equipment

HES Unit #	Distance-1 way	HES Unit #	Distance-1 way	HES Unit #	Distance-1 way	HES Unit #	Distance-1 way
10804557C	19 mile	10866497C	19 mile	10972458	19 mile	11410470C	19 mile
11526488	19 mile	11605598	19 mile				

Job Hours

Date	On Location Hours	Operating Hours	Date	On Location Hours	Operating Hours	Date	On Location Hours	Operating Hours
TOTAL			Total is the sum of each column separately					

Job

Job Times

Formation Name					Date	Time	Time Zone
Formation Depth (MD)	Top		Bottom		Called Out	02 - May - 2011 05:30	MST
Form Type	BHST				On Location	02 - May - 2011 08:30	MST
Job depth MD	8771. ft		Job Depth TVD	8771. ft	Job Started	02 - May - 2011 12:09	MST
Water Depth			Wk Ht Above Floor	3. ft	Job Completed	02 - May - 2011 13:36	MST
Perforation Depth (MD)	From		To		Departed Loc	02 - May - 2011 15:00	MST

Well Data

Description	New / Used	Max pressure psig	Size in	ID in	Weight lbm/ft	Thread	Grade	Top MD ft	Bottom MD ft	Top TVD ft	Bottom TVD ft
Open Hole				7.875				937.	8744.	.	.
Production Casing	New		4.5	4.	11.6			.	8211.		
Surface Casing	Used		8.625	8.097	24.		J-55	.	937.	.	.

Sales/Rental/3rd Party (HES)

Description	Qty	Qty uom	Depth	Supplier
SHOE,FLT,4-1/2 8RD,2-3/4 SSII	1	EA		
CLR,FLT,4-1/2 8RD,9.5-13.5PPF,2-3/4	1	EA		
CENTRALIZER ASSY - API - 4-1/2 CSG X	36	EA		
CLAMP - LIMIT - 4-1/2 - HINGED -	1	EA		
KIT,HALL WELD-A	1	EA		
Description	Qty	Qty uom	Depth	Supplier
PLUG ASSY - 3W LATCHDOWN - 4-1/2 IN	1	EA		
BAFFLE ASSY - 4-1/2 8RD LATCHDOWN PLUG	1	EA		

HALLIBURTON

Tools and Accessories

Type	Size	Qty	Make	Depth	Type	Size	Qty	Make	Depth	Type	Size	Qty	Make
Guide Shoe					Packer					Top Plug			
Float Shoe					Bridge Plug					Bottom Plug			
Float Collar					Retainer					SSR plug set			
Insert Float										Plug Container			
Stage Tool										Centralizers			

Miscellaneous Materials

Gelling Agt		Conc		Surfactant		Conc		Acid Type		Qty		Conc	%
Treatment Fld		Conc		Inhibitor		Conc		Sand Type		Size		Qty	

Fluid Data

Stage/Plug #: 1

Fluid #	Stage Type	Fluid Name	Qty	Qty uom	Mixing Density lbm/gal	Yield ft ³ /sk	Mix Fluid Gal/sk	Rate bbl/min	Total Mix Fluid Gal/sk
1	Water Spacer		20.00	bbl	8.33	.0	.0	5.0	
2	MUD FLUSH III	MUD FLUSH III - SBM (528788)	24.00	bbl	8.4	.0	.0	5.0	
3	EcconoCem B2 12.5#	ECONOCHEM (TM) SYSTEM (452992)	340.0	sacks	12.5	1.89	10.29	6.0	10.29
	10.29 Gal	FRESH WATER							
4	13.5# Fracem	FRACCEM (TM) SYSTEM (452963)	300.0	sacks	13.5	1.7	8.16	5.0	8.16
	8.16 Gal	FRESH WATER							
5	ClaFix III Water Displacement		15.00	Gal	8.33	.0	.0	7.0	

Calculated Values

Pressures

Volumes

Displacement		Shut In: Instant		Lost Returns		Cement Slurry		Pad	
Top Of Cement		5 Min		Cement Returns		Actual Displacement		Treatment	
Frac Gradient		15 Min		Spacers		Load and Breakdown		Total Job	

Rates

Circulating		Mixing		Displacement		Avg. Job	
Cement Left In Pipe	Amount	14 ft	Reason	Shoe Joint			
Frac Ring # 1 @	ID	Frac ring # 2 @	ID	Frac Ring # 3 @	ID	Frac Ring # 4 @	ID

The Information Stated Herein Is Correct

Customer Representative Signature