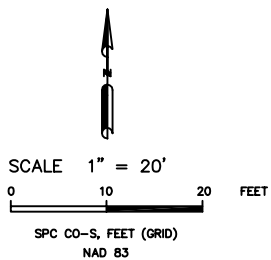
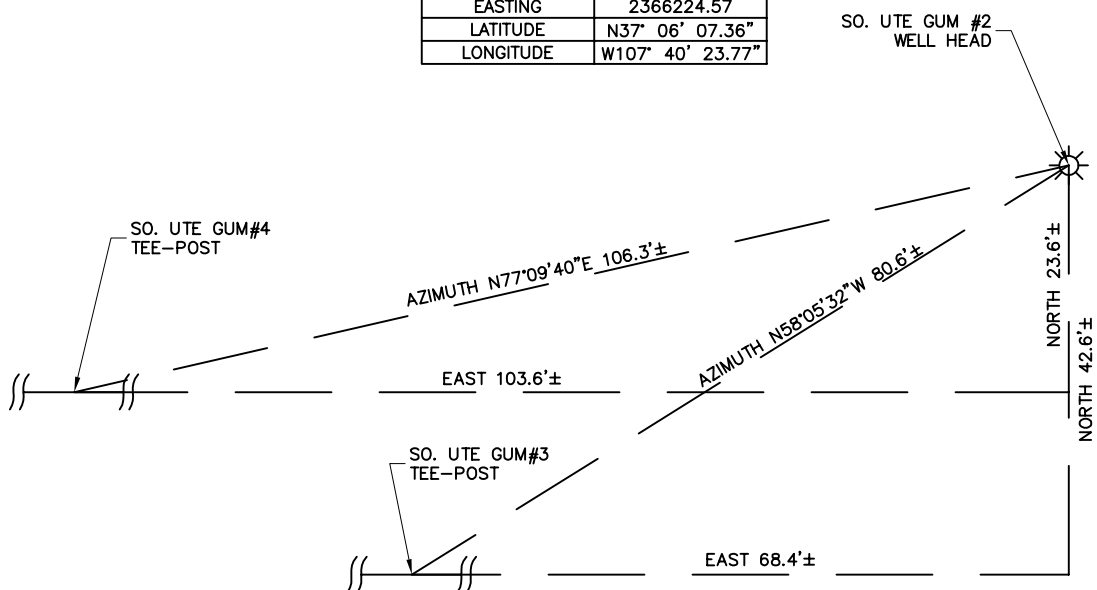


SO. UTE GU M #3	
OPERATOR	BP
NORTHING	1165861.74
EASTING	2366156.13
LATITUDE	N37° 06' 06.93"
LONGITUDE	W107° 40' 24.60"

SO. UTE M #4	
OPERATOR	BP
NORTHING	1165880.73
EASTING	2366120.92
LATITUDE	N37° 06' 07.11"
LONGITUDE	W107° 40' 25.04"

SO. UTE GU M #2	
OPERATOR	BP
NORTHING	1165904.35
EASTING	2366224.57
LATITUDE	N37° 06' 07.36"
LONGITUDE	W107° 40' 23.77"



☼ EXISTING WELLHEAD

||—|| PROPOSED TEE-POST

	PROJ. NO 8572	FILE NO. 338135SUM3&4.TXT		SO. UTE GU M #4 WELLHEAD DISTANCE PLAT		REV A
	DRAWN BY DK	DATE 9/26/11	CLIENT PC	BP AMERICA PROD. CO. - DURANGO, CO		

Drawing: SO.UTE.GUM4.APD.DWG Plotted by: DALLAS_KNOLL Date: 09/28/2011 10:15:33 AM R:\Project Files\BP\BP 80 Acre Infill\So. Ute GU M #3 #4\Permitting Drawings\