

**LAMP RYNEARSON
& ASSOCIATES**

4715 Innovation Drive 970.226.0342 | P
 Fort Collins, CO 80525 970.226.0879 | F
 www.LRA-Inc.com

Proposed Well Location Exhibit
 Poudre Trail 5 2-2-1
 1 of 2

drawn by
KJW

date
2/10/12

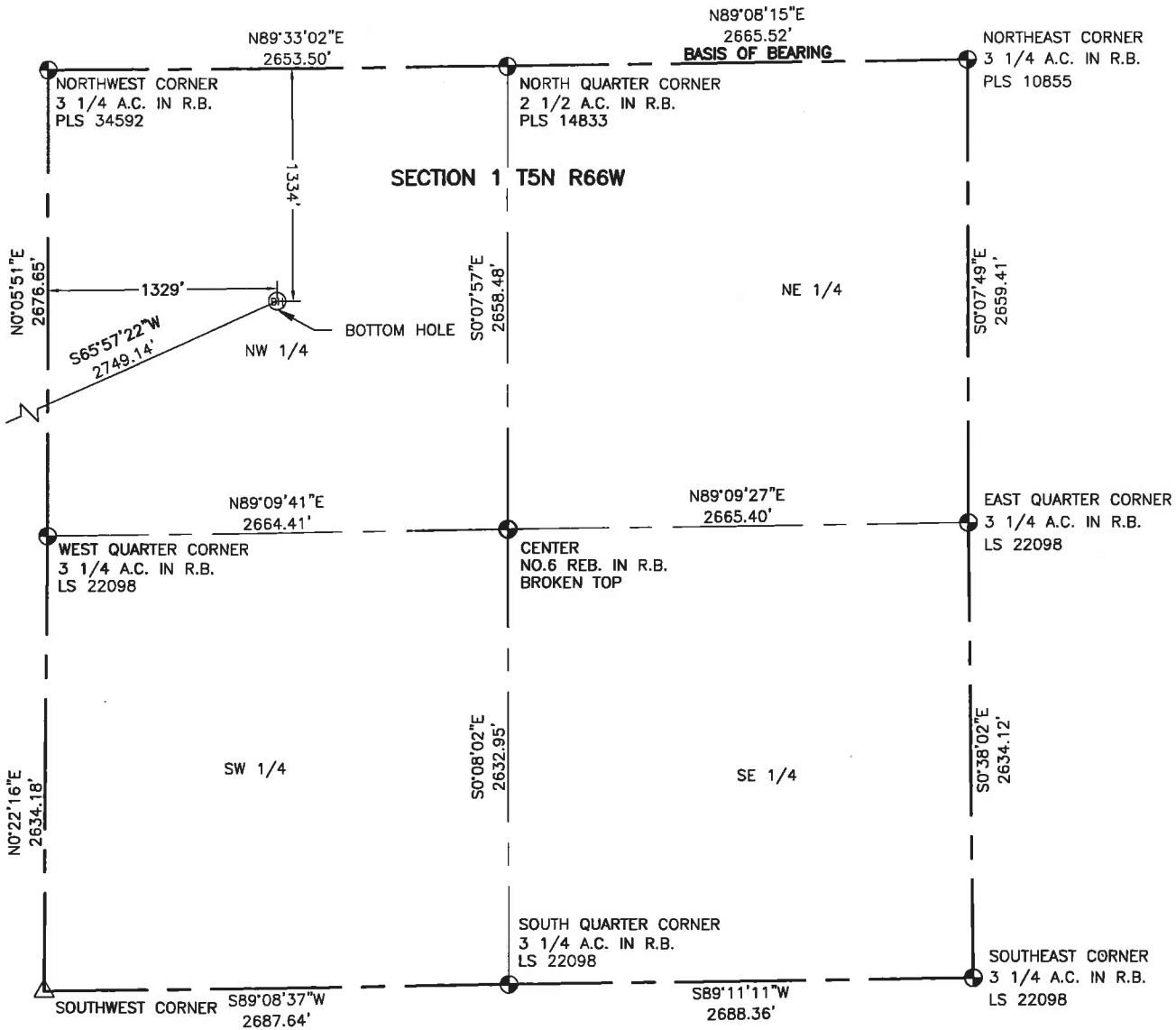
cogcc id

project - task number
0210013.00

book and page
MR-01 5-6

path\filename P:_Engineering\0210013 MRI Bestway\DRAWINGS\EXHIBITS\0210013EXWPN.dwg

surface - location
SE/4, NE/4, SEC 2 T5N R66W



NOTES:

DISTANCES ARE MEASURED PERPENDICULAR TO NEAREST SECTION LINE AND ARE SHOWN ON THE SAME SIDE OF THE SECTION LINE WHERE THE WELL IS LOCATED.

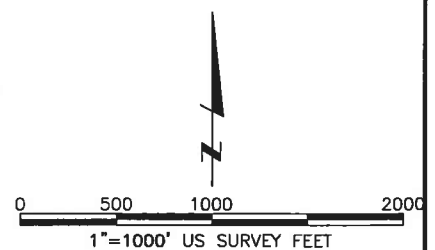
BASIS OF BEARING:

THE NORTH LINE OF THE NORTHEAST QUARTER OF SECTION 1-T5N-R66W BEARS N89°08'15"E BETWEEN THE NORTH QUARTER CORNER OF SECTION 1 MONUMENTED WITH A 2 1/2" A.C. IN R.B. STAMPED "PLS 14833" AND THE NORTHEAST CORNER OF SECTION 1 MONUMENTED WITH A 3 1/4" A.C. IN R.B. AT STAMPED "PLS 10855" BASED ON THE COLORADO NORTH 0501 COORDINATE SYSTEM.

ELEVATIONS ARE NAVD 88, USING THE CONUS GEOID 03 AS OBSERVED FROM GPS OBSERVATIONS

LEGEND

- ALIQUOT CORNER
- ⊙ BOTTOM HOLE
- △ COMPUTED ALIQUOT FROM MONUMENT ACCESSORIES
- ⊙ PROPOSED WELL
- A.C. ALUMINUM CAP
- R.B. RANGE BOX



**LAMP RYNEARSON
& ASSOCIATES**

4715 Innovation Drive 970.226.0342 | P
Fort Collins, CO 80525 970.226.0879 | F
www.LRA-Inc.com

Proposed Well Location Exhibit
Poudre Trail 5 2-2-1
2 of 2

drawn by
KJW

date
2/10/12

cogccc id

project - task number
0210013.00

book and page
MR-01 5-6

path\filename P:_Engineering\0210013 MRI Bestway\DRAWINGS\EXHIBITS\0210013EXWPNA.dwg

surface - location
SE/4, NE/4, SEC 2 T5N R66W