

### Well Name: McMillen G19-32D

Surface Location: McMillen G19-32D Pad Sec.19-T4N-R65W  
North American Datum 1983, US State Plane 1983Colorado Northern Zone  
Ground Elevation: 4750.0

+N/-S  
0.0

+E/-W  
0.0

Northing  
1351959.26  
Original Well Elev

Easting  
3219283.94

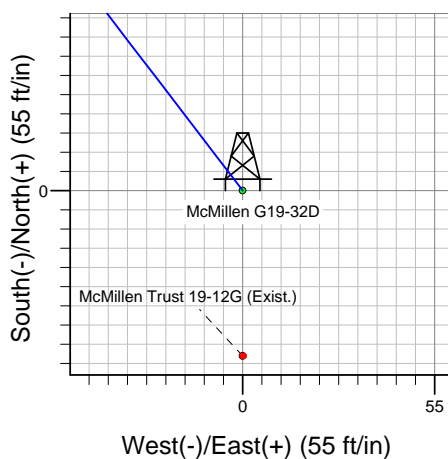
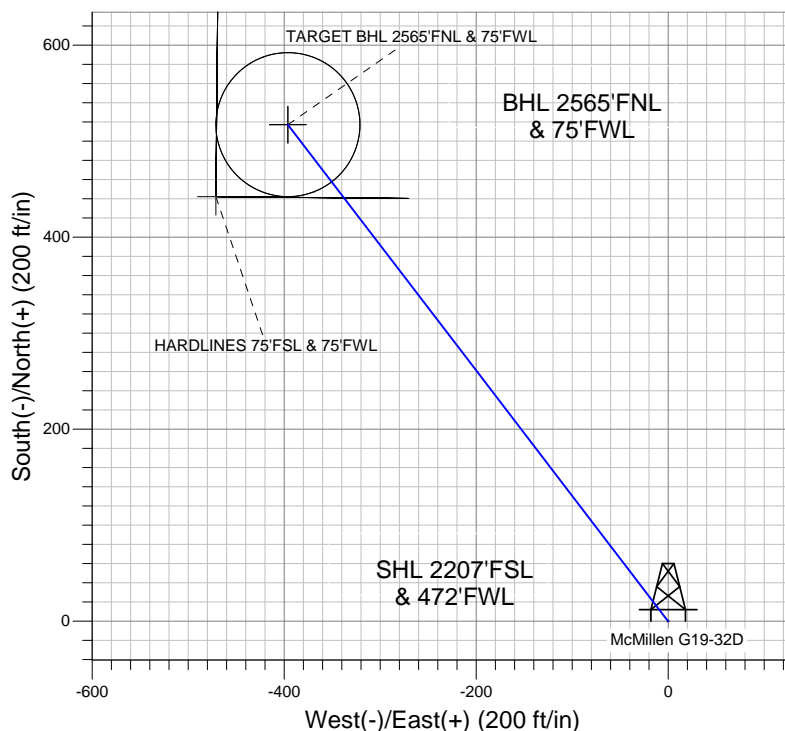
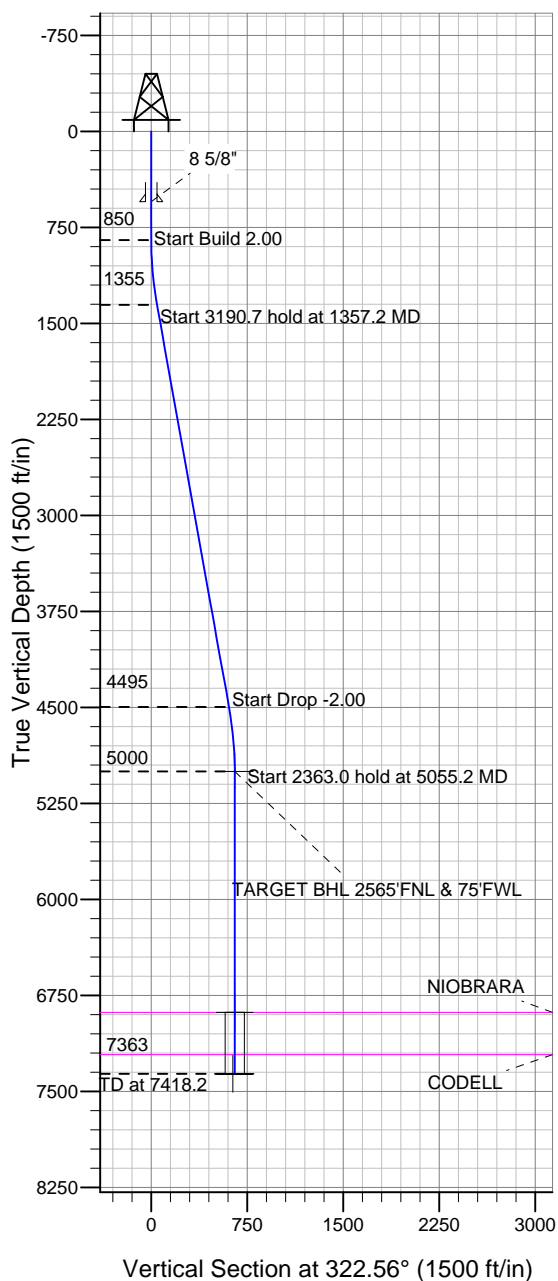
Latitude  
40.296860

Longitude  
-104.713840

Slot

WELL @ 4763.0ft (Original Well Elev)

## NOBLE ENERGY INC WELD COUNTY CO



McMillen G19-32D Pad Sec.19-T4N-R65W  
McMillen G19-32D  
Noble McMillen G19-32D Plan #1 (1-10-12)  
12:41, January 16 2012



Azimuths to True North  
Magnetic North: 8.75°  
Magnetic Field  
Strength: 53023.0snT  
Dip Angle: 66.96°  
Date: 1/10/2012  
Model: IGRF2010

### WELLBORE TARGET DETAILS (LAT/LONG)

| Name                          | TVD    | +N/-S | +E/-W  | Latitude  | Longitude   | Shape                 |
|-------------------------------|--------|-------|--------|-----------|-------------|-----------------------|
| TARGET BHL 2565'FNL & 75'FWL  | 5000.0 | 517.3 | -396.1 | 40.298280 | -104.715260 | Point                 |
| TARGET CIRCLE 75'FSL & 75'FWL | 6883.0 | 517.3 | -396.1 | 40.298280 | -104.715260 | Circle (Radius: 75.0) |
| HARDLINES 75'FSL & 75'FWL     | 7363.0 | 442.3 | -471.1 | 40.298074 | -104.715529 | Polygon               |

### SECTION DETAILS

| Sec | MD     | Inc   | Azi    | TVD    | +N/-S | +E/-W  | DLeg | TFace  | VSec  | Target                       |
|-----|--------|-------|--------|--------|-------|--------|------|--------|-------|------------------------------|
| 1   | 0.0    | 0.00  | 0.00   | 0.0    | 0.0   | 0.0    | 0.00 | 0.00   | 0.0   |                              |
| 2   | 850.0  | 0.00  | 0.00   | 850.0  | 0.0   | 0.0    | 0.00 | 0.00   | 0.0   |                              |
| 3   | 1357.2 | 10.14 | 322.56 | 1354.6 | 35.6  | -27.2  | 2.00 | 322.56 | 44.8  |                              |
| 4   | 4548.0 | 10.14 | 322.56 | 4495.4 | 481.8 | -368.9 | 0.00 | 0.00   | 606.8 |                              |
| 5   | 5055.2 | 0.00  | 0.00   | 5000.0 | 517.3 | -396.1 | 2.00 | 180.00 | 651.6 | TARGET BHL 2565'FNL & 75'FWL |
| 6   | 7418.2 | 0.00  | 0.00   | 7363.0 | 517.3 | -396.1 | 0.00 | 0.00   | 651.6 |                              |