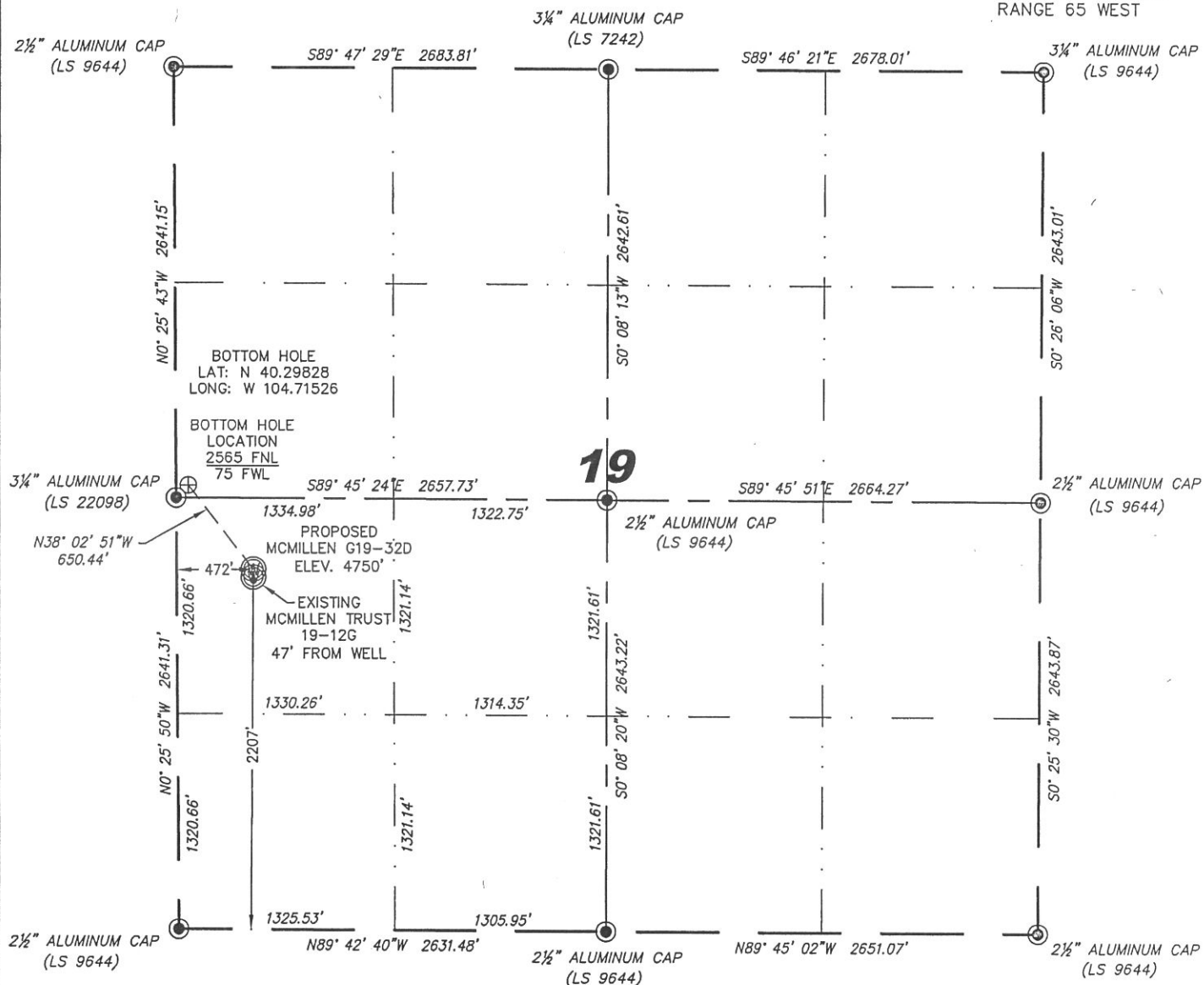


Cheyenne, Wyoming 82001

THIS MAP DOES NOT REPRESENT A BOUNDARY SURVEY

SECTION 19
TOWNSHIP 4 NORTH
RANGE 65 WEST



0 1000

Scale: 1" = 1000'

IN ACCORDANCE WITH A REQUEST FROM SCOTT LEWIS - NOBLE ENERGY INC,
STEEL SURVEYING SERVICES, LLC HAS DETERMINED THE SURFACE HOLE LOCATION OF THE MCMILLEN
G19-32D WELL TO BE 2207' FSL, 472' FWL, AS MEASURED AT NINETY (90) DEGREES FROM THE
SECTION LINES, SECTION 19, TOWNSHIP 4 NORTH, RANGE 65 WEST, 6TH PRINCIPLE MERIDIAN, WELD
COUNTY, COLORADO.

I HEREBY CERTIFY THAT THIS WELL LOCATION CERTIFICATE WAS PREPARED BY ME, OR UNDER MY DIRECT SUPERVISION, THAT THE FIELD WORK WAS COMPLETED ON 09/29/2011, FOR AND ON BEHALF OF NOBLE ENERGY INC, THAT IT IS NOT A LAND SURVEY PLAT OR AN IMPROVEMENT SURVEY PLAT, AND THAT IT IS NOT TO BE RELIED UPON FOR ESTABLISHMENT OF FENCE, BUILDING, OR OTHER FUTURE IMPROVEMENT LINES.

NOTES:

- 1) BASIS OF BEARINGS FOR THIS MAP ARE BASED UPON GPS OBSERVATIONS MADE ON 03/01/2009 BETWEEN MONUMENTS LOCATED AT THE SOUTHEAST SECTION CORNER AND THE NORTHEAST SECTION CORNER OF SAID SECTION AND WITH ALL BEARINGS SHOWN HEREON RELATIVE THERETO.
- 2) COORDINATES SHOWN ARE COLORADO STATE PLANE (NORTH ZONE) NAD 83
- 3) ELEVATIONS ARE BASED UPON NGS OPUS SOLUTION NAVD 88 DATUM.
- 4) THE NEAREST EXISTING WELL IN THIS QUARTER: MCMILLEN TRUST 19-12G, 47' SOUTH.
- 5) SEE LOCATION DRAWING FOR ALL IMPROVEMENTS WITHIN VISIBLE IMPROVEMENT LIMIT.
- 6) THE LOCATION FALLS IN IRRIGATED CROP LAND.

LATITUDE & LONGITUDE (NAD 83 SURFACE HOLE):

LATITUDE: N 40.29686°

LONGITUDE: W 104.71384°

PDOP: 1.7

QUARTER-QUARTER: NW/4SW/4 SEC 19

NEAREST PROPERTY LINE: 472' WEST

LEGEND

- ☒ FOUND SURVEY MONUMENT PER
 MONUMENT RECORD - EXCEPTIONS NOTED.
☐ (C) CALCULATED DIMENSION

NOTICE: According to Colorado law you MUST commence any legal action based upon any defect in this W.L.C. within three years after you first discover such defect. In no event may any action based upon any defect in this W.L.C. be commenced more than ten years from this sold date of the certification shown hereon.

Jeffrey B. Jones
Professional Land Surveyor Registration No. 37920
State of Colorado

JOB #: 11086

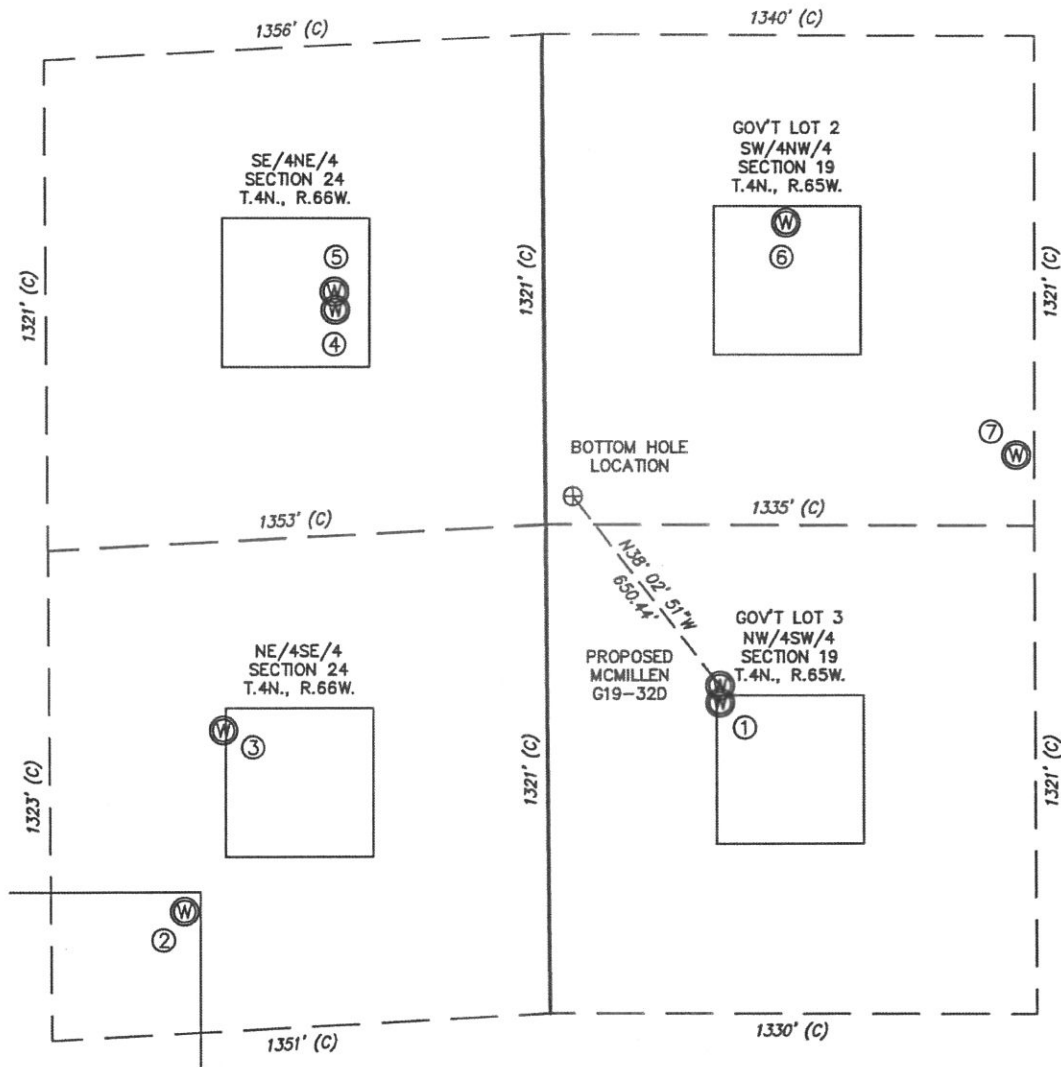
Completed 12/16/2011

Revised 01/13/2012



SKETCH - MCMILLEN G19-32D

SECTION 19
TOWNSHIP 4 NORTH
RANGE 65 WEST
AND
SECTION 24
TOWNSHIP 4 NORTH
RANGE 66 WEST



①
MCMILLEN
TRUST 19-12G
NW/SW SEC. 19
T.4N., R.65W.
2160' FSL
471' FWL
EL 4750'
N 40.29673
W 104.71384
PDOP 2.2

②
BROWN NO. 1
NE/SE SEC. 24
T.4N., R.66W.
1650' FSL
990' FEL
(RECORD
LOCATION)

③
BROWN 43-24
NE/SE SEC. 24
T.4N., R.66W.
2132' FSL
881' FEL
EL 4746'
N 40.29657
W 104.71869
PDOP 2.3

④
SEGAL 42-24
SE/NE SEC. 24
T.4N., R.66W.
2032' FNL
568' FEL
EL 4734'
N 40.29968
W 104.71756
PDOP 2.2

⑤
SEGAL
8-2-24
SE/NE SEC. 24
T.4N., R.66W.
1983' FNL
570' FEL
EL 4733'
N 40.29981
W 104.71757
PDOP 2.2

⑥
MCMILLEN
TRUST 19-5G
SW/NW SEC. 19
T.4N., R.65W.
1826' FNL
662' FWL
EL 4734'
N 40.30029
W 104.71315
PDOP 2.4

⑦
MCMILLEN
G19-20
SW/NW SEC. 19
T.4N., R.65W.
2451' FNL
1282' FWL
EL 4741'
N 40.29855
W 104.71093
PDOP 2.2

NOTES:

- 1) THIS SKETCH DOES NOT REPRESENT A BOUNDARY SURVEY.
- 2) THE DATUM FOR THE LATITUDES AND LONGITUDES ON THIS SKETCH IS NAD83.

