

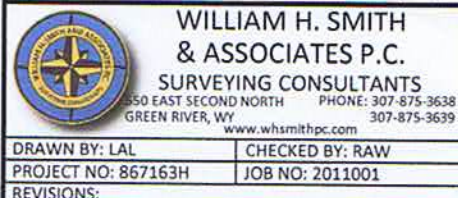
SURFACE HOLE LOCATION				BOTTOM HOLE LOCATION				
STATE PLANE CO. NORTH	GEOGRAPHIC DEC. MIN. SEC.	GEOGRAPHIC DEC. DEG.	LAT.	40.667636"	GEOGRAPHIC DEC. MIN. SEC.	GEOGRAPHIC DEC. DEG.	LAT.	40.656050"
			LONG.	104.893706"			LONG.	104.893914"
			LAT.	40.667655"			LAT.	40.656074"
			LONG.	104.893179"			LONG.	104.893387"
			LAT.	40°40'03.49"			LAT.	40°39'21.80"
			LONG.	104°53'37.34"			LONG.	104°53'38.09"
STATE PLANE CO. NORTH	GEOGRAPHIC DEC. MIN. SEC.	GEOGRAPHIC DEC. DEG.	LAT.	40°40'03.56"	GEOGRAPHIC DEC. MIN. SEC.	GEOGRAPHIC DEC. DEG.	LAT.	40°39'21.87"
			LONG.	104°53'35.44"			LONG.	104°53'36.19"
			NORTH	1486637.67			NORTH	1482418.27
			EAST	3168191.16			EAST	3168162.33
			NORTH	486636.79			NORTH	482417.46
			EAST	2168341.90			EAST	2168313.11
FOOTAGE: 1955' FEL - 453' FNL				FOOTAGE: 1924' FEL - 610' FSL				
MEASURE DATE		INSTRUMENT OPERATOR		POOP		SHL GRND ELEV.		
2/27/2012		ALLEN BLATTET		1.4		5281.3		

I, Rodney A. Walters, Professional Land Surveyor, CO. RLS # 16847 hereby certify that (in accordance with a request from Erin Bibeau with Marathon Oil Co, 5555 San Felipe, Houston, TX 77056) I and or personnel under my direction made a survey on the 22nd day of February 2012, for the Surface Hole Location and Elevation of Marathon Oil Co. BLACK HOLLOW 8-67-16-3H being located within NW1/4 NE1/4, Section 16, T8N, R67W, and the Bottom Hole Location being located in the SW1/4 SE1/4 of Section 16, T8N, R67W, both being of the 6th P.M., Weld County, State of Colorado.

- All bearings and distances are **GRID**, based on the Colorado State Plane Coordinate System, North Zone, North American Datum 1983 from GPS observations occupying a WHS control point (5/8" rebar) and having the Location and Elevation derived from an Opus Solution.
- Vertical Datum used is of NAVD 88.
- Record Bearings and Distances as shown are based on the General Land Office Survey plat approved on the 15th day of November 1870.



CONFIDENTIALITY NOTES:  
The information contained in this plat is legally privileged and confidential information intended only for the use of the recipients. If you are not the intended recipients, you are hereby notified that any use, dissemination, distribution or copying of this information is strictly prohibited.



### LEGEND

- ☒ FOUND OR SET CORNER  
☒ CALCULATED CORNER  
☐ NOTHING FOUND

**LOCATION:**  
BLACK HOLLOW  
8-67-16-3H  
WITHIN NW/4 NE /  
SECTION 16,  
T 8 N, R 67 W,  
6TH PM.  
WELD COUNTY,  
COLORADO

MARATHON OIL COMPANY  
PO BOX 3128, HOUSTON TX, 77253  
5555 SAN FELIPE, HOUSTON TX, 77056

WELL LOCATION PLAT

SCALE: 1"=1000'	EXHIBIT "A"
DATE: 2/27/2012	SHEET 1 OF 1